

ITEM # 4
ARIYA VENTURE FWD
MODEL # 24114



Electrify your life

Experience a new force of wonder. Boost your driving confidence with the smooth-yet-thrilling available e-4ORCE AWD electric power. Swipe the massive dual displays, touch the haptic feedback controls, or address ARIYA® with your voice. Take your hands off the wheel, your feet off the pedals, and let ARIYA assist you through stop-and-go freeway traffic with available ProPILOT Assist 2.0, or into your next parking space with available ProPILOT Park. This is what it's like to live electric.^{1, 2, 3, 4, 5}





Technology that plugs into your senses

Chances are, you've never experienced anything quite like ARIYA®. Instead of traditional buttons, you'll find dazzling illuminated controls that react with haptic feedback when pressed. The Integrated Display Interface features dual 12.3" widescreens that are breathtaking to see and simple to use. Communication is seamless, thanks to next-generation voice control. And with Intelligent Route Planner, directions to the nearest charging station are just a swipe away.^{3, 6, 7, 8}

- Haptic Touch Controls
- Integrated Display Interface³
- Voice Control^{6, 8}
- Firmware Over-the-Air Updates⁹
- Wireless Charging^{10, 11}
- Wireless Apple CarPlay® Integration⁸



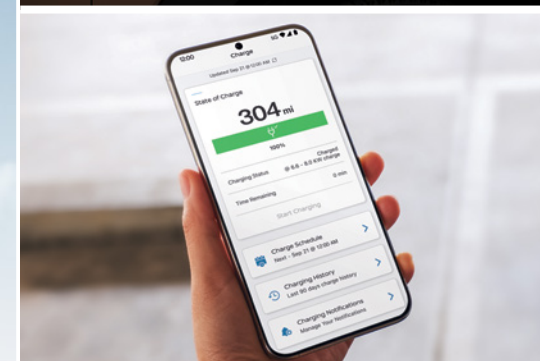
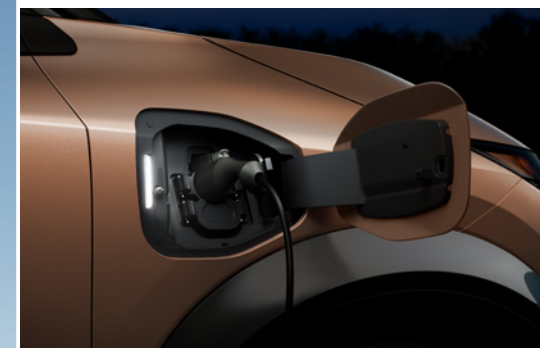
Drive, work, or park and relax — it's up to you

Once parked, ARIYA transforms into a mobile lounge — use the flat floor and open space to stretch out, get comfortable. Or create a mobile office — perch your laptop on the tray table,¹⁰ place your sketch book on the power sliding center console,¹⁰ and get productive.¹²



Charge ahead with confidence

This electric crossover may be brand new, but ARIYA® is infused with Nissan's long history of know-how in EV development. The batteries powering ARIYA take proven technology even further — with advances like active thermal management, which optimizes performance for hot and cold climates, as well as fast charging.^{13, 14} You can choose between standard and long-range batteries and front-wheel drive or available e-4ORCE All-Wheel Drive.^{1, 2, 13} Just charge up and go — the road is yours.



Charge at home With a dedicated wall charger, you can plug into the easy life and wave goodbye to the gas pump.^{13, 15}

Charge smart Schedule your home charging from your compatible smartphone and choose times when electricity rates are lower. Which means you can set charging to start while you sleep, then wake up to an ARIYA 100% ready to go.^{8, 13, 16}

Charge on the go An ever-expanding public charging network, including fast charge stations, lets you commute with confidence.^{13, 14}

Intelligent Route Planner This digital tool can help make your journey seamless: sync the climate control system with your departure time, and calculate the route to your destination while locating fast chargers along the way. This is next-level road-tripping.^{6, 7, 8, 14}

SiriusXM with 360L Transform your ride with the most extensive and personalized radio experience on the road. Advanced in-car technology makes finding your favorite SiriusXM channels, shows, and exclusive content easier than ever before.¹⁷

All-wheel drive, evolved

ARIYA's available e-4ORCE dual-motor AWD powertrain offers more than just awe-inspiring thrust and thrills. It combines balanced, smooth motion with positive traction for elevated grip and uplifted confidence you can feel year-round.^{1,2}

Movement is effortless. Power, seemingly limitless. Press the accelerator, and e-4ORCE responds with authority, propelling ARIYA® up to speed with remarkable force and poise. e-4ORCE precisely meters out power to each of its wheels, individually, so you can navigate slippery roads with more confidence.^{1,2,6}

e-4ORCE



NISSAN
INTELLIGENT
MOBILITY™



With available ProPILOT Assist 2.0, driving doesn't always have to be so hands-on

ProPILOT Assist 2.0 Feel the full power of ProPILOT Assist 2.0 as it helps out with freeway lane changes and can provide hands-off, foot-off driving assistance through stop-and-go freeway traffic.⁴

ProPILOT Park Tight parking spot? Push the ProPILOT Park button, and glide, hands-off, right into the spot – whether it's back-in or parallel.⁵

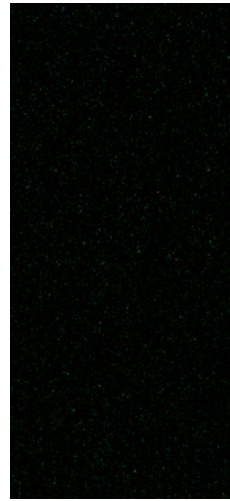
CHOOSE YOUR COLOR

ARIYA Trim Legend

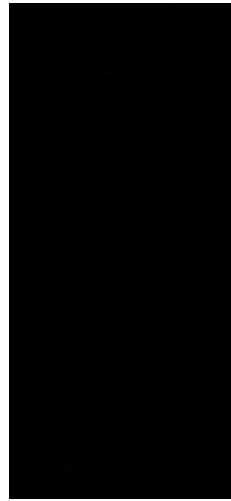
- VEN = VENTURE+
- ENG = ENGAGE
- EVO = EVOLVE+
- EMP = EMPOWER+
- PLT = PLATINUM+



Gun Metallic



Northern Lights Metallic¹⁹



Black Diamond Pearl



Two-tone Everest White Pearl TriCoat/Black Diamond Pearl¹⁹



Two-tone Brilliant Silver/Black Diamond Pearl¹⁹

	VEN	ENG	EVO	EMP	PLT
Charcoal Cloth	<input checked="" type="checkbox"/>				
Charcoal Leatherette		<input checked="" type="checkbox"/>	<input checked="" type="checkbox"/>	<input checked="" type="checkbox"/>	
Light Gray Leatherette			<input checked="" type="checkbox"/>	<input checked="" type="checkbox"/>	
Blue Gray Nappa Leather ¹⁸					<input checked="" type="checkbox"/>

	VEN	ENG	EVO	EMP	PLT
Charcoal Cloth	<input checked="" type="checkbox"/>				
Charcoal Leatherette		<input checked="" type="checkbox"/>	<input checked="" type="checkbox"/>	<input checked="" type="checkbox"/>	
Light Gray Leatherette			<input checked="" type="checkbox"/>	<input checked="" type="checkbox"/>	
Blue Gray Nappa Leather ¹⁸					<input checked="" type="checkbox"/>

	VEN	ENG	EVO	EMP	PLT
Charcoal Cloth	<input checked="" type="checkbox"/>				
Charcoal Leatherette		<input checked="" type="checkbox"/>	<input checked="" type="checkbox"/>	<input checked="" type="checkbox"/>	
Light Gray Leatherette			<input checked="" type="checkbox"/>	<input checked="" type="checkbox"/>	
Blue Gray Nappa Leather ¹⁸					<input checked="" type="checkbox"/>

	VEN	ENG	EVO	EMP	PLT
Charcoal Cloth	<input checked="" type="checkbox"/>				
Charcoal Leatherette		<input checked="" type="checkbox"/>	<input checked="" type="checkbox"/>	<input checked="" type="checkbox"/>	
Light Gray Leatherette			<input checked="" type="checkbox"/>	<input checked="" type="checkbox"/>	
Blue Gray Nappa Leather ¹⁸					<input checked="" type="checkbox"/>

	VEN	ENG	EVO	EMP	PLT
Charcoal Cloth	<input checked="" type="checkbox"/>				
Charcoal Leatherette		<input checked="" type="checkbox"/>	<input checked="" type="checkbox"/>	<input checked="" type="checkbox"/>	
Light Gray Leatherette			<input checked="" type="checkbox"/>	<input checked="" type="checkbox"/>	
Blue Gray Nappa Leather ¹⁸					<input checked="" type="checkbox"/>



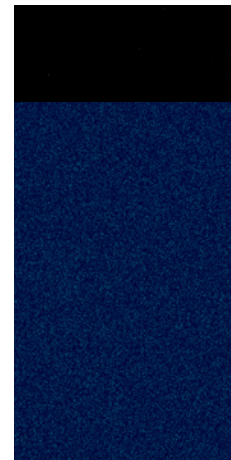
Two-tone Boulder Gray Pearl/Black Diamond Pearl¹⁹



Two-tone Sunrise Copper Pearl/Black Diamond Pearl¹⁹



Two-tone Passion Red TriCoat/Black Diamond Pearl^{19, 20}



Two-tone Deep Ocean Blue Pearl/Black Diamond Pearl¹⁹

	VEN	ENG	EVO	EMP	PLT
Charcoal Cloth	<input checked="" type="checkbox"/>				
Charcoal Leatherette		<input checked="" type="checkbox"/>	<input checked="" type="checkbox"/>	<input checked="" type="checkbox"/>	
Light Gray Leatherette			<input checked="" type="checkbox"/>	<input checked="" type="checkbox"/>	
Blue Gray Nappa Leather ¹⁸					<input checked="" type="checkbox"/>

	VEN	ENG	EVO	EMP	PLT
Charcoal Cloth	<input checked="" type="checkbox"/>				
Charcoal Leatherette		<input checked="" type="checkbox"/>	<input checked="" type="checkbox"/>	<input checked="" type="checkbox"/>	
Light Gray Leatherette			<input checked="" type="checkbox"/>	<input checked="" type="checkbox"/>	
Blue Gray Nappa Leather ¹⁸					<input checked="" type="checkbox"/>

	VEN	ENG	EVO	EMP	PLT
Charcoal Cloth	<input checked="" type="checkbox"/>				
Charcoal Leatherette		<input checked="" type="checkbox"/>	<input checked="" type="checkbox"/>	<input checked="" type="checkbox"/>	
Light Gray Leatherette			<input checked="" type="checkbox"/>	<input checked="" type="checkbox"/>	
Blue Gray Nappa Leather ¹⁸					<input checked="" type="checkbox"/>

	VEN	ENG	EVO	EMP	PLT
Charcoal Cloth	<input checked="" type="checkbox"/>				
Charcoal Leatherette		<input checked="" type="checkbox"/>	<input checked="" type="checkbox"/>	<input checked="" type="checkbox"/>	
Light Gray Leatherette			<input checked="" type="checkbox"/>	<input checked="" type="checkbox"/>	
Blue Gray Nappa Leather ¹⁸					<input checked="" type="checkbox"/>

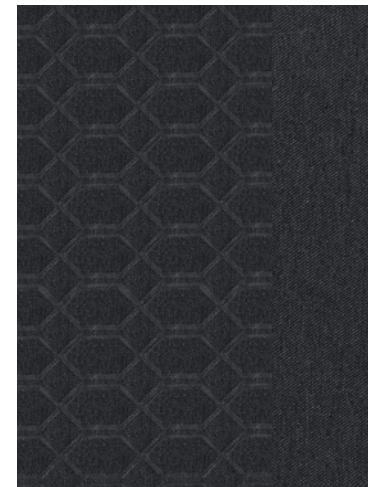
■ Standard

Nissan has taken care to ensure that the digital color swatches presented here are the closest possible representation of actual vehicle colors. Swatches may vary slightly due to viewing light or screen quality. Please see the actual vehicle and colors at your dealer.

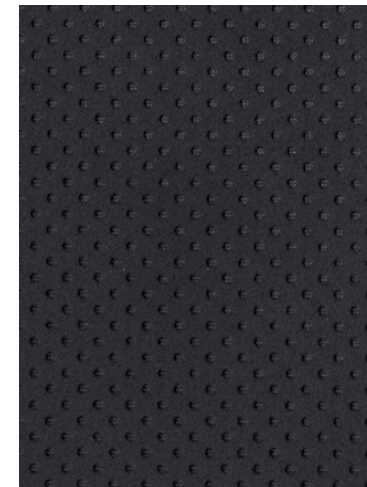
CHOOSE YOUR INTERIOR



Nissan ARIYA[®] PLATINUM+ e-4ORCE shown in Blue Gray Nappa Leather.¹⁸



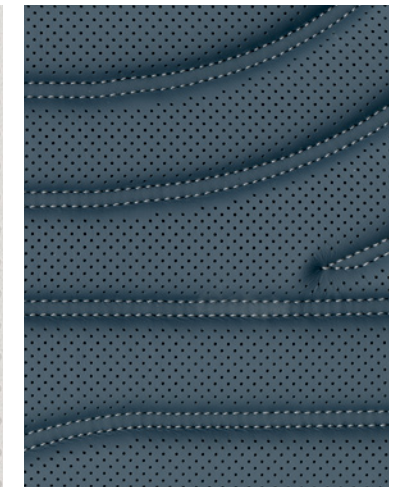
Charcoal Cloth
VENTURE+



Charcoal Leatherette
ENGAGE | EVOLVE+ | EMPOWER+



Light Gray Leatherette
ENGAGE | EVOLVE+ | EMPOWER+



Blue Gray Nappa Leather¹⁸
PLATINUM+

NISSAN ARIYA® ACCESSORIES

Build the “you” edition

Every Genuine Nissan Accessory is custom-fit, custom-designed and durability-tested. Each one is backed by Nissan's 3-year/36,000-mile (whichever occurs first) limited warranty (if installed by dealer at the time of new vehicle purchase) and can be financed when installed by dealer at time of new vehicle purchase.²¹ Affiliated Yakima® accessories are not warranted by Nissan. Refer to product manufacturer for warranty details. Nissan Limited Warranty does not cover damages or failures to the vehicle caused by improper installation or alterations of any Nissan-approved accessory or component. Contact your dealer for details.²²

For more information and to shop online for ARIYA® Genuine Nissan Accessories, go to bit.ly/23Ariya-Accys



Left: **Nissan ARIYA® PLATINUM+ e-4ORCE¹** shown in Two-tone Sunrise Copper Pearl/Black Diamond Pearl with 19" Gloss Black Aluminum-Alloy Wheels, Load Carriers — Crossbars,²³ Affiliated: Yakima® ForkLift — Fork Mount Bike Rack,^{22,23} Side-Window Deflectors, Clear Hood and Charging Port Protector Set, Exterior Ground Lighting w/ Logo and Rear Illumination, LED Fog Lights (standard on PLATINUM+ e-4ORCE), and Splash Guards.

Right: **Nissan ARIYA® PLATINUM+ e-4ORCE¹** shown in Two-tone Everest White Pearl TriCoat/Black Diamond Pearl with 19" Gloss Black Aluminum-Alloy Wheels, 19" Satin Chrome Wheel Insert Kit, Load Carriers — Crossbars,²³ Affiliated: Yakima® LoadWarrior — Cargo Basket,^{22,23} Side-Window Deflectors, Clear Rear Bumper Protector, Exterior Ground Lighting w/ Logo and Rear Illumination, Tow Hitch Receiver Kit, Class I,²⁴ Trailer Tow Harness (4-pin),²⁴ Affiliated: Yakima® RidgeBack 4 — Hitch Mount Bike Rack,^{22,23} Affiliated: Yakima® HitchSki — Hitch Mount Ski Adapter,^{22,23} and Splash Guards.

CHOOSE YOUR ACCESSORIES

A. **Virtual Key²⁵**

Use your compatible smartphone or Apple Watch® to lock/unlock and start your ARIYA. You can even share this access with up to 7 others.

B. **Dual Camera Drive Recorder^{26,27}**

Catch what's happening outside and inside your ARIYA.

C. **Retractable Pet Divider**

Give your 4-legged friends their own space, and help keep them secure.

D. **All-Season Floor Mats — High Wall Liners (3-piece set)**

Protect the interior from rain, snow, and mud.

E. **Trash Bin²⁷**

Spruce up your space with this handy, removable trash bin.

F. **Illuminated Kick Plates and Interior Accent Lighting (sold separately)**

Enliven your atmosphere with a glowing reception.

G. **Interior Door Scuff Protection**

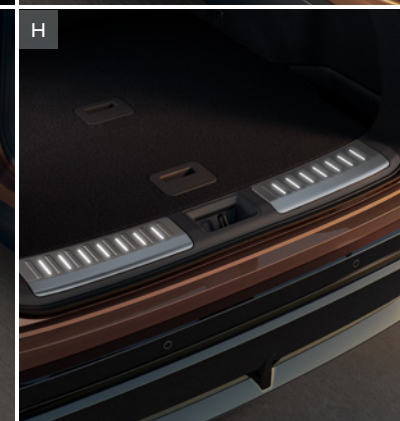
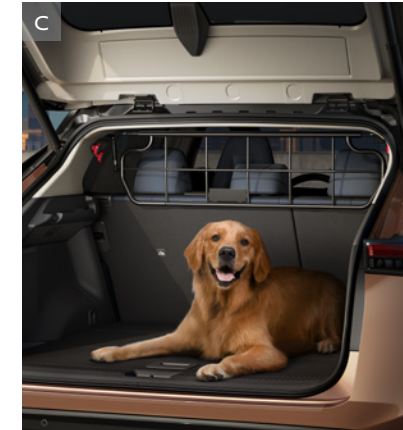
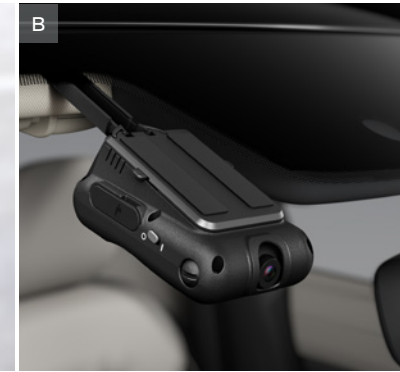
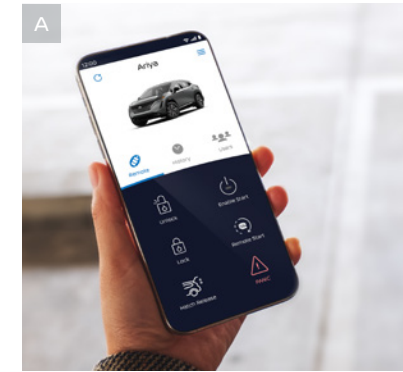
Shield ARIYA where it counts for protection from scuffs and scratches.

H. **Illuminated Scuff Plate**

Armor and illuminate ARIYA's cargo area.

Additional Accessories:

- Carpeted Floor Mats (2-piece set)
- Front Console Storage Bin
- Hatch Tent
- Removable Tote Cargo Organizer
- Affiliated: Yakima® SkyBox 16 — Roof Cargo Box^{22,23}
- Frameless EC Mirror w/ HomeLink®
- Security Impact Sensor
- Wheel Locks
- And More



CHOOSE YOUR TRIM

Choose the ARIYA® that fits your world

Whether you crave driving excitement, adventure-worthy capability, impressive range, or something in between, there's an ARIYA for you.^{16, 28}



	VENTURE+	ENGAGE	ENGAGE e-4ORCE	ENGAGE+ e-4ORCE	EVOLVE+	EVOLVE+ e-4ORCE	EMPOWER+	PLATINUM+ e-4ORCE
Mile Range ^{16, 28}	Up to 304 miles ¹⁶	Up to 216 miles ¹⁶	Up to 205 miles ²⁸	Up to 270 miles ²⁸	Up to 289 miles ¹⁶	Up to 270 miles ²⁸	Up to 289 miles ¹⁶	Up to 265 miles ²⁸
Drivetrain	FWD	FWD	AWD	AWD	FWD	AWD	FWD	AWD
Battery ¹³	87 kWh	63 kWh	63 kWh	87 kWh	87 kWh	87 kWh	87 kWh	87 kWh
Motor(s)	178 kW	160 kW	250 kW	290 kW	178 kW	290 kW	178 kW	290 kW
HP Torque	238 221 lb-ft	214 221 lb-ft	335 413 lb-ft	389 442 lb-ft	238 221 lb-ft	389 442 lb-ft	238 221 lb-ft	389 442 lb-ft
0-60 MPH (est.) ²⁹	7.2 seconds	7.1 seconds	5.1 seconds	4.8 seconds	7.2 seconds	4.8 seconds	7.2 seconds	4.8 seconds
Charge Time (est.) ¹³	40 min (80%)	35 min (80%)	35 min (80%)	40 min (80%)	40 min (80%)	40 min (80%)	40 min (80%)	40 min (80%)
Trim Highlights	VENTURE+ is our longest range model. ^{1, 16}	ENGAGE models offer different batteries, ¹³ ranges, ^{16, 28} and choice of Front-Wheel Drive or e-4ORCE All-Wheel Drive. ^{1, 2}			The EVOLVE+ models offer a choice of Front-Wheel Drive and e-4ORCE All-Wheel Drive. ^{1, 2}		The EMPOWER+ is Front-Wheel Drive. ¹	The PLATINUM+ is the ARIYA flagship. It is e-4ORCE All-Wheel Drive. ^{1, 2}
Key Features	Key features include: <ul style="list-style-type: none"> • ProPILOT Assist with Navi-link³⁰ • Standard Safety Shield® 360³¹ • ANDON interior lighting • Wireless Apple CarPlay® integration⁸ • Android Auto™ compatibility⁸ • Dual 12.3" displays^{3, 8} 	All three ENGAGE models include VENTURE+ equipment, plus: <ul style="list-style-type: none"> • Head-Up Display³² • 8-way power driver's seat • Memory system — driver's seat • Power-sliding center console • Leatherette-appointed seats • Heated front and rear outboard seats • Heated steering wheel 			Both EVOLVE+ models include ENGAGE equipment, plus: <ul style="list-style-type: none"> • Intelligent Around View® Monitor³³ • Intelligent Rear View Mirror³⁴ • LED fog lights • Panoramic Moonroof • Power liftgate • Wireless charger¹¹ • Power center storage with tray table¹² 		Includes EVOLVE+ equipment, plus: <ul style="list-style-type: none"> • ProPILOT Assist 2.0⁴ • ProPILOT Park⁵ • Multi-color contextual line illumination 	Includes EVOLVE+ equipment, plus: <ul style="list-style-type: none"> • ProPILOT Assist 2.0⁴ • ProPILOT Park⁵ • Multi-color contextual line illumination • Motion Activated Liftgate • Climate-controlled front seats • Bose Premium Audio System

SPECIFICATIONS

Mechanical	VEN	ENG	EVO	EMP	PLT
160 kW AC synchronous electric motor		■			
178 kW AC synchronous electric motor	■		■	■	
250 kW AC synchronous electric motor		□			
290 kW AC synchronous electric motor		□	□		■
Horsepower – 214 hp		■			
Horsepower – 238 hp	■		■	■	
Horsepower – 335 hp		□			
Horsepower – 389 hp		□	□		■
Torque – 221 lb-ft	■	■	■	■	
Torque – 413 lb-ft		□			
Torque – 442 lb-ft		□	□		■
63 kWh lithium-ion battery		■			
87 kWh lithium-ion battery	■	□	■	■	■
Battery heater	■	■	■	■	■
7.2 kW onboard charger	■	■	■	■	■
Quick Charge Port – 130 kW ¹³	■	■	■	■	■
Portable trickle-charge cable (120-V) ¹³	■				
Portable charge cable (120-V / 240-V) ¹⁵		■	■	■	■

Drivetrain	VEN	ENG	EVO	EMP	PLT
Front-Wheel Drive (FWD)	■	■	■	■	
e-4ORCE All-Wheel Drive (AWD) ^{1, 2}		□	□		■
ECO and Sport Modes	■	■	■	■	■
Snow mode (AWD)		□	□		■
Regenerative braking system with e-Step Mode ³⁵	■	■	■	■	■

Brakes	VEN	ENG	EVO	EMP	PLT
Front and rear vented disc brakes	■	■	■	■	■
4-wheel Anti-lock Braking System (ABS)	■	■	■	■	■
Electronic Brake force Distribution (EBD)	■	■	■	■	■
Brake Assist ³⁶	■	■	■	■	■
Electronic parking brake	■	■	■	■	■

Suspension/Steering	VEN	ENG	EVO	EMP	PLT
Independent strut front suspension	■	■	■	■	■
Independent multi-link rear suspension	■	■	■	■	■
Front and rear stabilizer bars	■	■	■	■	■
Vehicle-speed-sensitive electric power steering	■	■	■	■	■

Driver Assistance Technologies	VEN	ENG	EVO	EMP	PLT
Intelligent Cruise Control ³⁷	■	■	■	■	■
ProPILOT Assist with Navi-link ³⁰	■	■	■		
ProPILOT Assist 2.0 ⁴				■	■
ProPILOT Park ⁵				■	■
Intelligent Forward Collision Warning ³⁸	■	■	■	■	■
Automatic Emergency Braking with Pedestrian Detection ³⁹	■	■	■	■	■
Intelligent Lane Intervention ⁴⁰	■	■	■	■	■
Intelligent Blind Spot Intervention ⁴¹	■	■	■	■	■
Rear Cross Traffic Alert ⁴²	■	■	■	■	■
Rear Automatic Braking ⁴³	■	■	■	■	■
Intelligent Around View® Monitor ³³			■	■	■
Intelligent Rear View Mirror ³⁴			■	■	■
Front and Rear Sonar System ⁴⁴	■	■	■	■	■

Driver Assistance Technologies (continued)	VEN	ENG	EVO	EMP	PLT
High Beam Assist	■	■	■	■	■
Intelligent Driver Alertness ⁴⁵	■	■	■	■	■
Traffic Sign Recognition ⁴⁶	■	■	■	■	■
Hill Start Assist	■	■	■	■	■
Vehicle Dynamic Control (VDC) with Traction Control System (TCS) ⁴⁷	■	■	■	■	■

Wheels/Tires	VEN	ENG	EVO	EMP	PLT
19" Aluminum-alloy wheels with aero covers	■	■	■	■	■
20" Aluminum-alloy wheels					□
P235/55R19 All-season tires	■	■	■	■	■
P255/45R20 All-season tires					□

Exterior Features	VEN	ENG	EVO	EMP	PLT
LED headlights with LED signature Daytime Running Lights	■	■	■	■	■
Intelligent Auto Headlights	■	■	■	■	■
LED fog lights			■	■	■
Dual power-folding heated outside mirrors	■	■	■	■	■
Outside mirrors with integrated LED turn signal indicators					■
Charge port with light and lock	■	■	■	■	■
Illuminated front badge	■	■	■	■	■
Panoramic Moonroof			■	■	■
Power liftgate			■	■	■
Motion Activated Liftgate					■
Satin Chrome exterior trim	■	■	■	■	■
Dark Satin Chrome exterior trim (AWD only)		□	□		■

Comfort/Convenience	VEN	ENG	EVO	EMP	PLT
Dual Zone Automatic Temperature Control	■	■	■	■	■
Nissan Intelligent Key® with Push Button Start and four-door request switch	■	■	■	■	■
Power tilt and telescoping steering column					■
HomeLink® Universal Transceiver			■	■	■
Outside mirrors with reverse tilt-down feature	■	■	■	■	■
ANDON interior lighting	■	■	■	■	■
Multi-color contextual line illumination			■	■	■
Rain-sensing windshield wipers			■	■	■
Power-sliding center console			■	■	■
Power center storage with tray table ¹²			■	■	■
Removable cargo cover	■	■	■	■	■
Six cargo tie-down hooks	■	■	■	■	■
Divide-N-Hide® Cargo System (FWD only) ²³		■	■	■	■

Seating/Appointments	VEN	ENG	EVO	EMP	PLT
8-way power driver's seat, with 4-way power lumbar support		■	■	■	■
8-way power front-passenger's seat			■	■	■
Memory System — driver's seat		■	■	■	
Memory System — driver's and passenger's seats, steering wheel, and outside mirrors					■
Leatherette-appointed seats		■	■	■	
Nappa Leather-appointed seats					■
Heated leather-wrapped steering wheel		■	■	■	■
Heated front seats		■	■	■	■

Seating/Appointments (continued)	VEN	ENG	EVO	EMP	PLT
Climate-controlled front seats (heated and cooled)					■
Heated outboard rear seats		■	■	■	■

Infotainment	VEN	ENG	EVO	EMP	PLT
12.3" Digital dashboard with fully digital gauges ³	■	■	■	■	■
NissanConnect® 12.3" integrated display interface ⁸	■	■	■	■	■
Nissan Door to Door Navigation with Premium Traffic ⁶	■	■	■	■	■
NissanConnect® Services powered by SiriusXM with trial access to 5-year Select and 6-month Premium packages ⁸	■	■	■	■	■
Head-Up Display ³²		■	■	■	■
Voice Recognition ⁶	■	■	■	■	■
Hello Nissan ⁸	■	■	■	■	■
Alexa Built-in ^{8, 48}	■	■	■	■	■
Wireless Apple CarPlay® integration ⁸	■	■	■	■	■
Android Auto™ compatibility ⁸	■	■	■	■	■
SiriusXM Traffic and Travel Link with 3-month trial access ⁹	■	■	■	■	■
Wi-Fi Hotspot ⁸	■	■	■	■	■
Firmware Over-the-Air Updates ⁹	■	■	■	■	■
Bose Premium Audio System with 10 speakers, including dual-driver woofer					■
Two USB-A ports and two USB-C ports ¹¹	■	■	■	■	■
Wireless charger ¹¹			■	■	■
SiriusXM with 360L and 3-month subscription included ¹⁷	■	■	■	■	■

Safety	VEN	ENG	EVO	EMP	PLT
Nissan Advanced Air Bag System with dual-stage supplemental front air bags with seat-belt and occupant-classification sensors ⁴⁹	■	■	■	■	■
Seat-mounted side-impact supplemental air bags for front- and rear-seat outboard occupants ⁴⁹	■	■	■	■	■
Driver and front-passenger supplemental knee air bags ⁴⁹	■	■	■	■	■
Roof-mounted curtain supplemental air bags with rollover sensor for side-impact head protection for front- and rear-seat outboard occupants ⁴⁹	■	■	■	■	■
Far-side supplemental air bag ⁴⁹					■
3-point ALR/ELR passenger seat belt system (ELR for driver)	■	■	■	■	■
Front and rear-outboard seat belts with pretensioners and load limiters	■	■	■	■	■
LATCH System (Lower Anchors and Tethers for Children)	■	■	■	■	■

DIMENSIONS/CAPACITIES/WEIGHTS/MPGe

Exterior Dimensions – Inches	
Wheelbase	109.3
Overall length	182.9
Overall width	85.5
Overall height	65.4

Aerodynamics – cd	
Drag coefficient	
FWD	0.30
AWD (except PLATINUM+)	0.31
PLATINUM+	0.33

Interior Dimensions – Inches	
Head room front with/without moonroof	37.9/39.6
Head room rear	38.3 (36.6 for PLT+)
Leg room front/rear	42.3/37.0
Hip room front/rear	56.0/52.5
Shoulder room front/rear	57.1/55.9

Capacities	
Seating capacity	5
Interior passenger volume with/without moonroof (cu. ft.)	96.3/101.2
Total interior volume with/without moonroof (cu. ft.)	119.1/124.0
Cargo volume with rear seat up (cu. ft.) ²³	22.8
Cargo volume with rear seat down (cu. ft.) ²³	59.7

Towing/Payload	
Maximum towing capacity (lbs.) (AWD only) ⁵⁰	1,500

Curb Weights – Lbs.					
Base total	VEN	ENG	EVO	EMP	PLT
— FWD	4,528	4,323	4,608	4,608	-
— AWD	-	4,608/4,899	4,899	-	5,057

2023 EPA Fuel Economy MPGe ¹⁶					
City/Highway/Combined	VEN	ENG	EVO	EMP	PLT
— FWD	111/95/103	109/94/101	105/91/98	105/91/98	-
— ARIYA e-4ORCE AWD MPGe numbers not available at time of publication.					

NISSAN ROADSIDE ASSISTANCE

Your peace of mind is on us. For 36 months or 36,000 miles, whichever comes first, your new Nissan is covered for the following:⁵¹

- Flat-tire changes
- Trip Interruption benefits
- Jump starts
- Vehicle lockouts

Follow Nissan on:



visit [NissanUSA.com/ariya](https://www.nissanusa.com/ariya)



¹Nissan ARIYA not yet available for purchase. Estimated availability late Fall/early 2023 — subject to change. Pre-production model shown. Actual production model may vary. ²e-4ORCE AWD cannot prevent collisions or provide enhanced traction in all conditions. Always monitor traffic and weather conditions. ³Information displayed is dependent on how vehicle is equipped. Driving is serious business and requires your full attention. If you have to use the feature while driving, exercise extreme caution at all times so full attention may be given to vehicle operation. ⁴Consumer activation of NissanConnect Services ProPILOT Assist 2.0 package (“Package”) required for ProPILOT Assist 2.0 functionality. Package trial period included with new vehicle purchase. Trial period may be subject to change or termination at any time and without notice. After trial period ends, monthly subscription fee required. See [NissanUSA.com/connect/legal](https://www.nissanusa.com/connect/legal) for more subscription information. ProPILOT Assist 2.0 cannot prevent collisions. It is the driver’s responsibility to be in control of the vehicle and monitor traffic conditions at all times. Hands-off freeway driving is possible when driving in a single lane, on the condition that the driver remains attentive on the road ahead and is prepared to immediately take manual control of the steering wheel when conditions of the road, traffic, and vehicle require it. System operates only when lane markings are detected. Does not function in all weather, traffic and road conditions. System has limited control capability and the driver may need to steer, brake or accelerate at any time to maintain safety. See Owner’s Manual for safety information. ⁵ProPILOT Park is not a substitute for the driver’s attention to the immediate surroundings. When using this feature, exercise extreme caution at all times so full attention may be given to vehicle operation. ProPILOT Park cannot prevent collisions. It is the driver’s responsibility to be in control of the vehicle and monitor traffic conditions at all times. Does not function in all weather and road conditions. See Owner’s Manual for safety information. ⁶Never program while driving. GPS mapping may not be detailed in all areas or reflect current road status. ⁷Actual route at time of departure may vary due to battery level at trip departure, changes in traffic, etc. that could affect the original trip plan. ⁸Use feature only when safe and legal. Compatible device and service required. Subject to third party service availability. For more information, see [NissanUSA.com/connect/legal](https://www.nissanusa.com/connect/legal). ⁹Availability may vary. NissanConnect® Services subscription may be required. Always read and follow instructions for safe update procedures. You may contact Nissan at 1-800-333-0207 for assistance with software updates. You may also visit your local Nissan dealer; dealership charges may apply. ¹⁰Available feature. ¹¹Driving is serious business and requires your full attention. If you have to use the connected device while driving, exercise extreme caution at all times so full attention may be given to vehicle operation. ¹²Use only when parked in a safe location. Compatible device required. Message and data rates may apply. ¹³Charging capacity and times may vary based on battery temperature. For Level 1 home charging, use only a 110-120 volt, 15-amp dedicated outlet for charging. See Customer Disclosure Form for details. ¹⁴Public charging networks are provided by independent companies, and are not within Nissan’s control. Availability of charging stations not guaranteed. ¹⁵240-V home charging dock sold separately. Not a Nissan product. Some chargers may not be compatible with your ARIYA. Contact charger manufacturer before purchase for information on compatibility and warranty. Nissan does not warrant and is not responsible for loss, including consequential, incidental, or other damages caused by charger defects, charger incompatibility, or installation services. ¹⁶2023 MY EPA-estimated range up to 304 miles for combined city/highway driving for VENTURE+ FWD. 2023 MY EPA-estimated range up to 289 miles for combined city/highway driving for EVOLVE+ FWD, and EMPOWER+ FWD. 2023 MY EPA-estimated range up to 216 miles for combined city/highway driving for ENGAGE FWD. 2023 MY EPA Fuel Economy Estimates 111 City, 95 Highway for VENTURE+ FWD. Based on EPA formula of 33.7 kW/hour equal to one gallon of gasoline energy, EPA rated VENTURE+ FWD equivalent to 111 MPG measured as gasoline fuel efficiency in city driving, and 95 MPG in highway driving. 2023 MY EPA Fuel Economy Estimates 105 City, 91 Highway for EVOLVE+ FWD, and EMPOWER+ FWD. Based on EPA formula of 33.7 kW/hour equal to one gallon of gasoline energy, EPA rated EVOLVE+ FWD, and EMPOWER+ FWD equivalent to 105 MPG measured as gasoline fuel efficiency in city driving, and 91 MPG in highway driving. 2023 MY EPA Fuel Economy Estimates 109 City, 94 Highway for ENGAGE FWD. Based on EPA formula of 33.7 kW/hour equal to one gallon of gasoline energy, EPA rated ENGAGE FWD equivalent to 109 MPG measured as gasoline fuel efficiency in city driving, and 94 MPG in highway driving. Actual mileage will vary with trim levels, options, and driving conditions. See Customer Disclosure Form for details. Use for comparison only. ¹⁷SiriusXM with 360L: Service will automatically stop at the end of your trial subscription period unless you decide to continue service. If you do not wish to enjoy your trial, you can cancel by calling the number below. All SiriusXM services require a subscription, each sold separately by SiriusXM after the trial period. **Service subject to the SiriusXM Customer Agreement and Privacy Policy, visit [siriusxm.com](https://www.siriusxm.com) for complete terms and how to cancel which includes calling 1-866-635-2349.** Some services and features are subject to device capabilities and location availability. Certain features and/or content may not be available in vehicles with SiriusXM with 360L unless an active data connection is enabled in the vehicle. Content varies by SiriusXM subscription package. All fees, content and features are subject to change. SiriusXM and related logos are trademarks of Sirius XM Radio Inc. and its respective subsidiaries. ¹⁸Leather appointments. ¹⁹Extra cost option. ²⁰Limited availability. ²¹For complete information concerning warranty coverage, conditions, limitations, and exclusions, see your Nissan dealer and [parts.NissanUSA.com](https://www.nissanusa.com/parts) for warranty details. ²²All non-Nissan Genuine Accessories are not warranted by Nissan. Refer to accessory product manufacturer for warranty details. Nissan limited warranty also does not cover damages or failures to the vehicle caused by improper installation or alterations. Damage or failures caused by use of non-Nissan-affiliated parts/accessories are also excluded from Nissan warranty coverage. Read the new vehicle limited warranty information booklet or contact your dealer for details. ²³Cargo shown for display purposes only. Cargo and load capacity limited by weight and distribution. Always secure cargo. Heavy loading of the vehicle with cargo, especially on the roof, will affect the handling and stability of the vehicle. ²⁴Towing varies by configuration. See Nissan Towing Guide and Owner’s Manual for additional information. Always secure cargo. ²⁵Compatible smartphone required. Virtual Key to be used only in accordance with laws or rules in effect in your vehicle’s location. Actual maximum distance for operation will vary depending on obstructions between compatible device and vehicle. ²⁶Federal/state/local laws or rules may apply. Review before using. ²⁷Vehicle shown is for illustrative purposes only. Not representative of brochure’s model year / model. ²⁸Preliminary Nissan-estimated combined city/highway driving range up to 205 miles for ENGAGE e-4ORCE AWD, 270 miles for ENGAGE+ e-4ORCE AWD and EVOLVE+ e-4ORCE AWD, 265 miles for PLATINUM+ e-4ORCE AWD with 19” wheels, and 240 miles for PLATINUM+ e-4ORCE AWD with 20” wheels. Based on Nissan internal testing results, subject to EPA confirmation. Actual mileage will vary with trim levels, options, and driving conditions. Use for comparison only. ²⁹Nissan calculation using 1-ft rollout testing with long-range battery and e-4ORCE only in Sport Mode and with e-Step off. Actual acceleration may vary. These results are for comparison only and should not be attempted on public roads. ³⁰ProPILOT Assist and ProPILOT Assist with Navi-link can’t prevent collisions. Driver at all times responsible to maintain safety by monitoring traffic, controlling vehicle, and if needed steer, brake or accelerate. System works only when lane markings detected and does not function in all weather, traffic and road conditions. See Owner’s Manual for safety information. ³¹Nissan Safety Shield technologies can’t prevent all collisions or warn in all situations. See Owner’s Manual for important safety information. ³²Do not use for extended periods of time. See Owner’s Manual for important safety information. ³³Intelligent Around View® Monitor cannot eliminate blind spots and may not detect every object. Driver should always turn and check surroundings before driving. See Owner’s Manual for safety information. ³⁴Intelligent Rear View Mirror may not detect every object and does not eliminate blind spots or warn of moving objects. See Owner’s Manual for safety information. ³⁵e-Step does not bring the vehicle to a complete stop. Monitor traffic conditions and use conventional brake as needed. See Owner’s Manual for safety information. ³⁶Brake Assist cannot prevent all collisions and may not provide warning or braking in all conditions. Driver should monitor traffic conditions and brake as needed to prevent collisions. See Owner’s Manual for safety information. ³⁷Intelligent Cruise Control uses limited braking and is not a collision avoidance or warning system. Driver should monitor traffic conditions and brake as needed to prevent collisions. See Owner’s Manual for safety information. ³⁸Intelligent Forward Collision Warning cannot prevent collisions. See Owner’s Manual for safety information. ³⁹Automatic Emergency Braking with Pedestrian Detection cannot prevent all collisions and may not provide warning or braking in all conditions. Driver should monitor traffic conditions and brake as needed to prevent collisions. See Owner’s Manual for safety information. ⁴⁰Intelligent Lane Intervention only operates when lane markings are detectable. See Owner’s Manual for safety information. ⁴¹Intelligent Blind Spot Intervention cannot prevent all collisions and may not detect every object or warn in all situations. Driver should always turn and look before changing lanes. See Owner’s Manual for safety information. ⁴²Rear Cross Traffic Alert may not detect all vehicles. See Owner’s Manual for safety information. ⁴³Rear Automatic Braking cannot prevent all collisions and may not provide warning or braking in all conditions. Driver should always check surroundings before driving. See Owner’s Manual for safety information. ⁴⁴Sonar System may not detect every object. Driver should always check surroundings before driving. See Owner’s Manual for safety information. ⁴⁵Intelligent Driver Alertness cannot provide a warning in every situation. See Owner’s Manual for safety information. ⁴⁶Traffic Sign Recognition may not detect and read all traffic signs in all conditions. Driver should monitor all traffic signs and obey all traffic laws. See Owner’s Manual for details. ⁴⁷Vehicle Dynamic Control cannot prevent collisions due to abrupt steering, carelessness, or dangerous driving techniques. It should remain on when driving, except when freeing the vehicle from mud or snow. See Owner’s Manual for safety information. ⁴⁸Compatible device and service required. Cloud-based service provided by Amazon Alexa Automotive services. Subject to third party service availability. Amazon, Alexa and all related logos are trademarks of [Amazon.com](https://www.amazon.com), Inc. or its affiliates. For more information, see [NissanUSA.com/connect/legal](https://www.nissanusa.com/connect/legal). ⁴⁹Air bags are only a supplemental restraint system. Always wear your seat belt. Rear-facing child restraints should not be placed in the front-passenger’s seat. All children 12 and under should ride in the rear seat properly secured in child restraints, booster seats, or seat belts according to their size. Air bags will only inflate in certain accidents. See Owner’s Manual for safety information. ⁵⁰Up to 1,500 lbs. maximum towing for 2023 ARIYA. Towing varies by configuration. See Nissan Towing Guide and Owner’s Manual for additional information. Cargo and load capacity limited by weight and distribution. Always secure cargo. ⁵¹Roadside assistance coverage period varies by model-year model. For complete information concerning warranty coverage, conditions and exclusions, see your Nissan dealer and read the warranty information booklet for the model-year model. ©2022 [Amazon.com](https://www.amazon.com), Inc. or its affiliates. Amazon, Alexa, Echo, and all related marks are trademarks of [Amazon.com](https://www.amazon.com), Inc. or its affiliates. Certain Alexa functionality is dependent on smart home technology. Apple CarPlay® and Apple Watch® are registered trademarks of Apple, Inc. Bose® is a registered trademark of The Bose Corporation. Facebook® is a registered trademark of Facebook, Inc. Google, Android, YouTube and Android Auto are trademarks of Google LLC. Google Assistant is not available in certain languages and countries. To use Android Auto on your car display, you’ll need an Android phone running Android 8 or higher, an active data plan, and the Android Auto app. HomeLink® is a registered trademark of Gentex Corporation. Instagram® is a registered trademark of Instagram, LLC. The Sirius®, XM®, and SiriusXM® names and all related marks and logos are trademarks of Sirius XM Radio Inc. All other trademarks are the property of their respective owners. Twitter® is a registered trademark of Twitter, Inc. Yakima® is a registered trademark of Yakima Products, Inc. This brochure is intended for general descriptive and informational purposes only. It is subject to change and does not constitute an offer, representation or warranty (express or implied) by Nissan North America, Inc. Interested parties should confirm the accuracy of any information in this brochure as it relates to a vehicle directly with Nissan North America, Inc., before relying on it to make a purchase decision. Nissan North America, Inc., reserves the right to make changes, at any time, without prior notice, in prices, colors, materials, equipment, specifications, and models and to discontinue models or equipment. Due to continuous product development and other pre- and post-production factors, actual vehicle, materials and specifications may vary from this brochure. Some vehicles shown with optional equipment. See the actual vehicle for complete accuracy. Availability and delivery times for particular models or equipment may vary. Specifications, options and accessories may differ in Hawaii, U.S. territories and other countries. For additional information on availability, options or accessories, see your Nissan dealer or contact Nissan North America, Inc. At [NissanUSA.com](https://www.nissanusa.com), you’ll find virtual product demonstrations, a way to “build your own Nissan,” a dealer locator, and more information about key Nissan support services. Or if you’d prefer, call **1-800-NISSAN-3** for answers to specific questions about ARIYA or any other Nissan vehicle. The Nissan names, logos, product names, feature names, and slogans are trademarks owned by or licensed to Nissan Motor Co. Ltd. and/or its North American subsidiaries. Other trademarks and trade names are those of their respective owners. Always wear your seat belt, and please drive responsibly. ©2022 Nissan North America, Inc. ‘23 ARIYA®. 2023 PLATINUM+ e-4ORCE model shown. Estimated availability early 2023¹.



Sign up to get the latest on
Nissan vehicles, news, and events.

<https://www.nissanusa.com/brochures/request-brochure.html>