



# Environmental Family

OMNICART 95 US GAL (360L)

# omnicart

Platinum Series

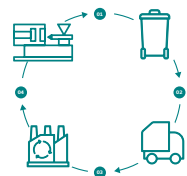
The Omnicart is designed to withstand the rigors of all types of collection equipment and waste streams.

## LESS IS MORE.



### Recycled resin

**LESS** virgin resin, more recycled resin content (PCR). We are constantly working on new effective recipes that will support our approach to sustainability and the circular economy.



### Easy to recycle

**MORE** money back in your pocket. The Omnicart is 100% recyclable and can be sold for scrap value at the end of its lifespan.



### Universal

**MORE** possibilities as the Omnicart is designed with all types of collection equipment and waste streams in mind.



### Increased diversion

**LESS** need for resident outreach with largest branding area on lid.



### Best nesting ratio

**MORE** money saved. We set out to help improve your bottom line by designing one of the most freight efficient carts on the market.



### Durable & Tough

**MORE** structural ribbing and flex zones to withstand harsh conditions and operating systems.

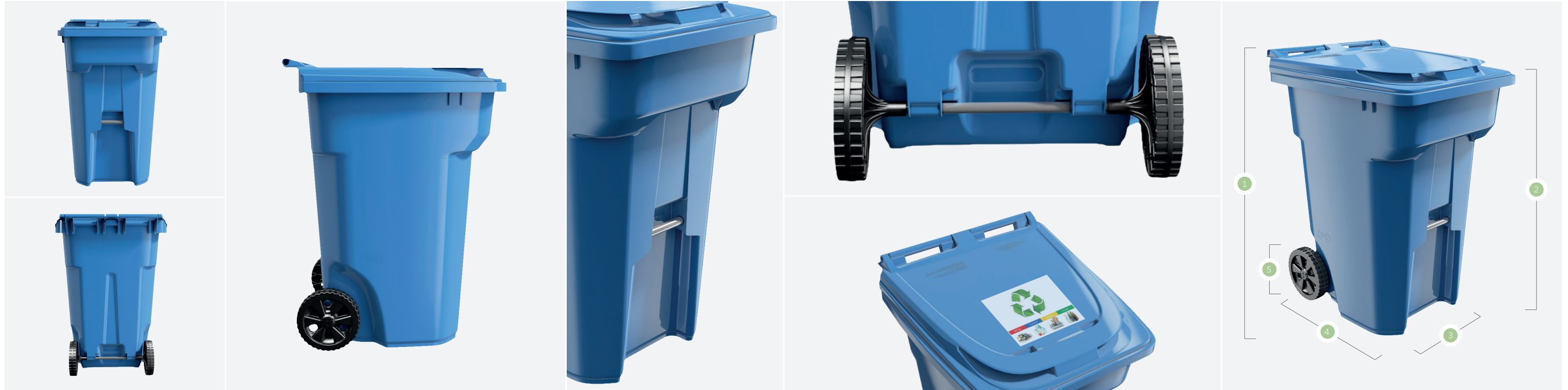




# Omniscart 95 Gal (360L)

## A PERFECT FIT FOR EVERY COLLECTION SYSTEM

Platinum Series



The Omnicart Series has been designed to fit the most complex waste management collection systems while maintaining a strong commitment to sustainability in support of a more circular economy.

### BODY / BAR

IPL's injection process uses high density polyethylene (HDPE) that yields precise design, consistent thicknesses and durability.

Unibody design requires no bolts or holes that could potentially leak.

Catch bar and lid assembled from factory.

Reinforced wall thickness in critical wear areas.

Recessed stopper on the front and rear corners for automated collection.

Rugged concave design adds extra rigidity.

Post-Consumer Recycled (PCR) material to support your sustainability goals.

### UPPER ATTACHMENT

Highly durable molded in integrated baffle compatible with fully and semi-automated collection.

Meets all ANSI standards.

### WHEELS & AXLES

Snap on wheels without tools

Lubricated maintenance-free bearings.

10" or 12" wheel options.

Axle journal, patented design

Solid steel axle, yellow zinc-plated against corrosion.

### LIDS / HANDLES

Durable one piece lid rod.

Watertight lid design overlaps container with inside moisture barrier lip dripping rim.

Inclined design to keep from water pooling on lid.

Ergonomic design allows for easy handling and tilting.

Lift handles and finger grabs. for safe and easy opening.

270° lid opening.

Large imprint area.

RFID technology and/or barcode option for quick identification.

Injection molding labeling on lid (IML).

### SPECIFICATIONS

70270	
① Total Height	42.75"
② Body Height	41.75"
③ Width	29.5"
④ Depth	32.5"
⑤ Wheel Diameter	10" - 12"
Load Rating	335Lbs

### WARRANTY

10-year limited warranty.

For semi-automated Type B American grips and Type G fully automated collection • Ideal for Waste, Recycling collection • Also ideal for Residential, Commercial, Industrial and Institutional environments.

