

www.InfraSolutionsGroup.com



Quote To:

VSA

Mechanicsville, VA 23116

Atten:

[illegible]

QUICKVIEW AIR HD

RAPID, COMPLETE
SEWER ASSESSMENT

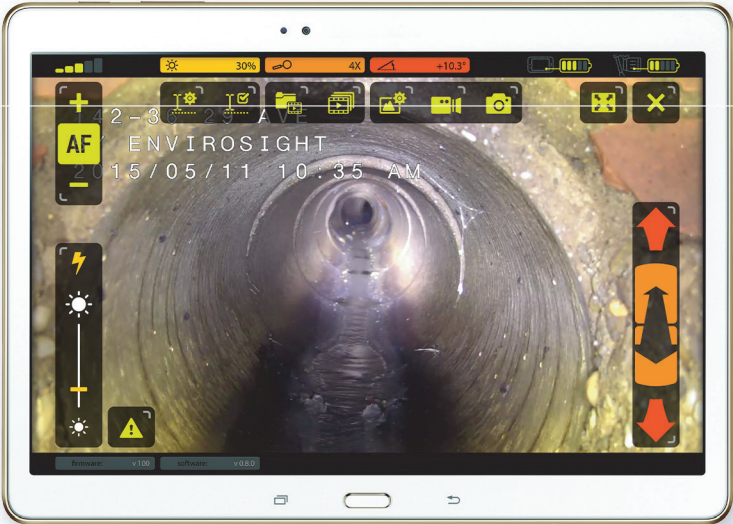


 **ENVIROSIGHT**

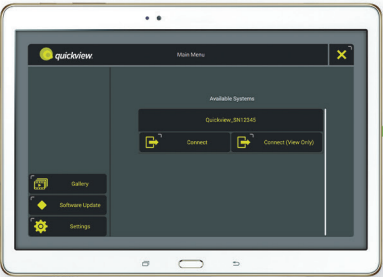
INSTANT INSIGHT ABOUT SEWERS

Quickview airHD's high-power zoom optics and focused illumination look deep into sewer lines from a manhole to see if they need repair, cleaning or further inspection.

With the insight Quickview delivers, you'll make better maintenance decisions and use resources more effectively.



Operate with real-time video and touchscreen controls.



Connect via Wi-Fi.

CITY

- Identify and prioritize maintenance issues.
- Avoid confined space entry.
- Inspect hard-to-reach areas.
- Respond to emergency callouts.
- Improve sewer cleaning efficiency.

CONTRACTOR

- Survey pipe condition before bidding services.
- Document successful completion of work.

D.O.T.

- Assess storm drain and culvert condition.



CENTER

To adjust camera height in-manhole, push against the standoff's spring; a ratchet will hold your position.



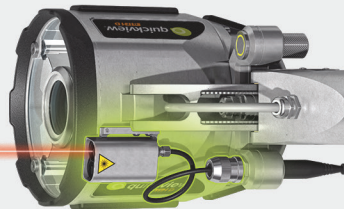
ILLUMINATE

With the camera encircled by focused light, you can see hundreds of feet into pipes.



TILT

Using touchscreen controls, remotely adjust camera tilt to achieve optimal alignment.



MEASURE

An optional rangefinder accessory measures distance-to-target with the push of a button.

6-48" pipe dia.

max. 400' view range





SYSTEM COMPONENTS

- camera head
- app (tablet not included)
- pole with standoff
- bipod
- battery (2)
- charger
- case

SPECIFICATIONS

video system

imager 1/2.8-type CMOS
 zoom . . . 360× (30× optical, 12× digital)
 resolution . 1280×720 pixel (2.38 MP)
 functions zoom
 focus (auto/manual)
 shutter (auto/manual)
 FOV (hor.) . 63.7 (wide) - 2.3 (tele) deg
 sensitivity 1.4 lux

illumination

system . . . four LED/reflector pairs
 type coaxial, collimated
 reflector type proprietary

camera head

connections 4-pin aux port
 depth rating 10' (3m)
 construction aluminum
 sensors temp, pressure, incline

wireless system

Wi-Fi standard . . . IEEE 802.11b/g/n
 frequency range . 2.400–2.483 GHz
 operating channels 1–11

centering support

height adjustment . . 18.9" (480mm)
 pipe dia. 6–48" (DIN 150–1200)
 mechanism ratcheted gas spring

battery/charger

battery capacity 3.4 A-hr.
 battery charger mains power

pole/bipod

length (collapsed/extended) . . 4'/16'
 stabilization hands-free bipod

app

OS Android, iOS, Windows



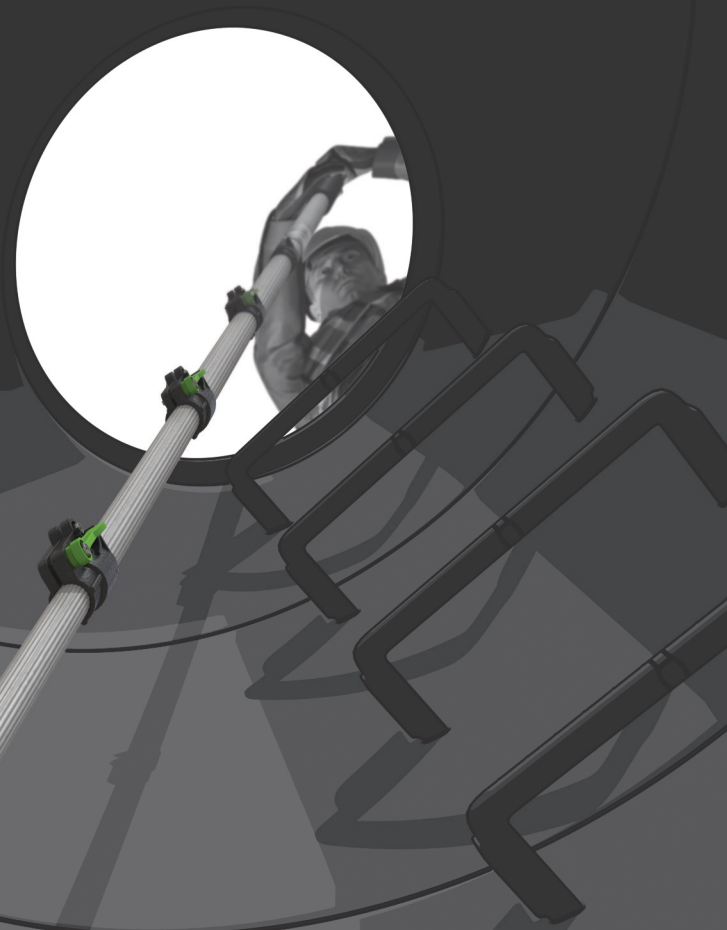
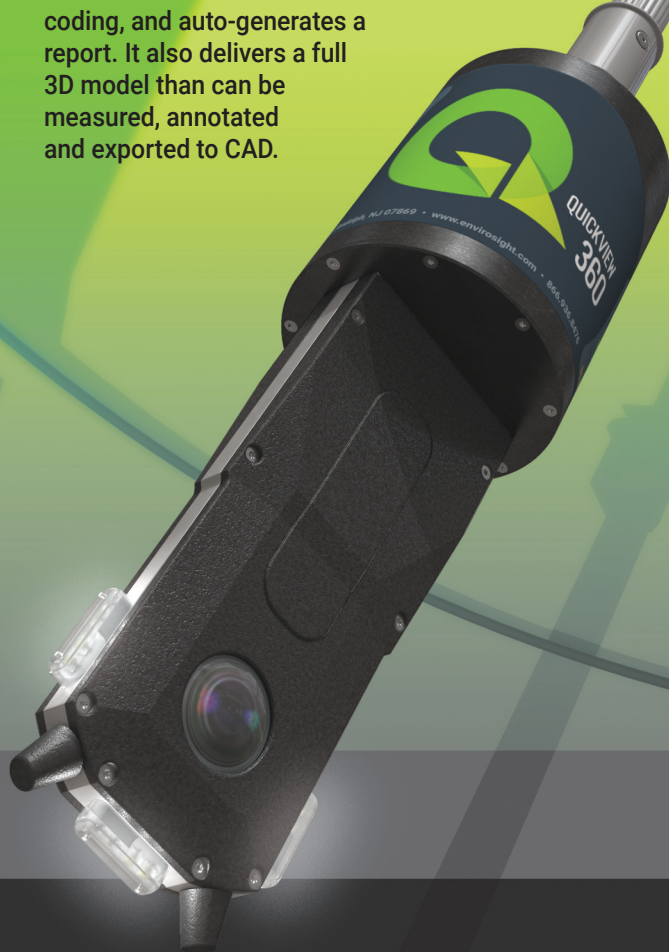


QUICKVIEW
360

1 MANHOLE EVERY 5 MINUTES

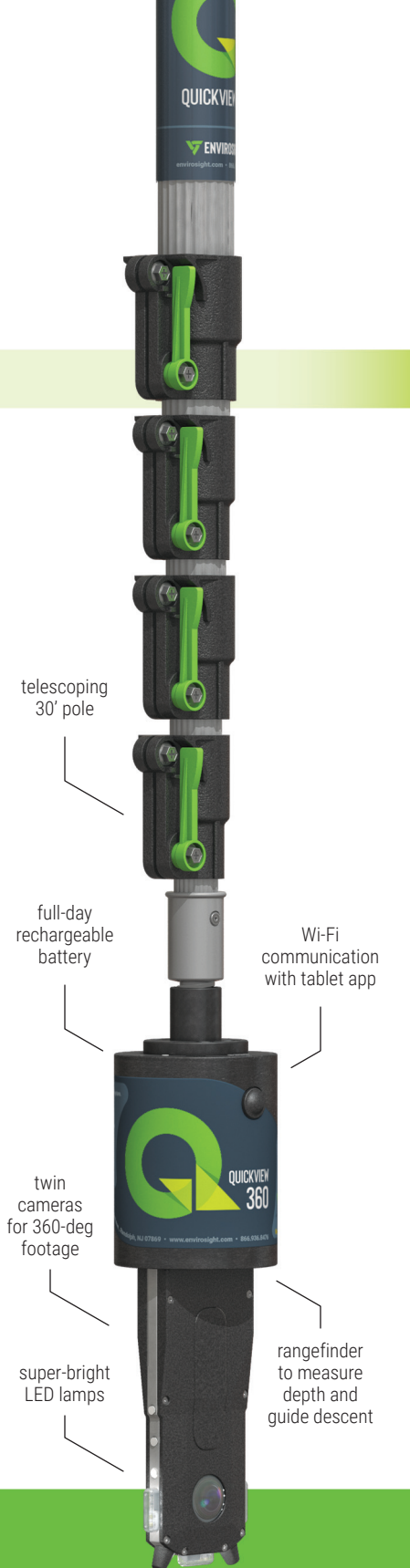
Manhole inspection doesn't have to be costly and tedious. With the Quickview 360, a single operator can inspect up to 80 manholes per day. Results stream to the cloud for easy storage, sharing and analysis.

The Quickview 360 captures HD panoramic video, uses AI to automate defect and feature coding, and auto-generates a report. It also delivers a full 3D model than can be measured, annotated and exported to CAD.



- ▶ AI CODING OF OBSERVATIONS
- ▶ REPORTS GENERATED AUTOMATICALLY
- ▶ WIRELESS UPLOAD TO CLOUD
- ▶ VIRTUAL PAN/TILT VIDEO FOOTAGE
- ▶ 3D MODEL WITH MEASURING TOOLS
- ▶ POINT CLOUD EXPORT TO CAD

STREAMLINE MANHOLE INSPECTION



KIT CONTENTS

camera head • camera case • camera sleeve
camera cradle • charger • 30' telescoping pole
tablet with field case • tablet app
1 yr WinCan Web Flex subscription



PACKAGE OPTIONS

BASIC PRO

virtual pan/tilt footage	✓	✓
WinCan Web hosting	✓	✓
auto report creation		✓
AI defect coding		✓
3D model w/ export		✓



www.envirosight.com • (866) 936.8476