

Mechanical Sweeper

BD202

All-Terrain · Robust · Easy to Operate

 **Excelway**[®]

a www.excelwayusa.com

Technical specs are subject to change without prior notice

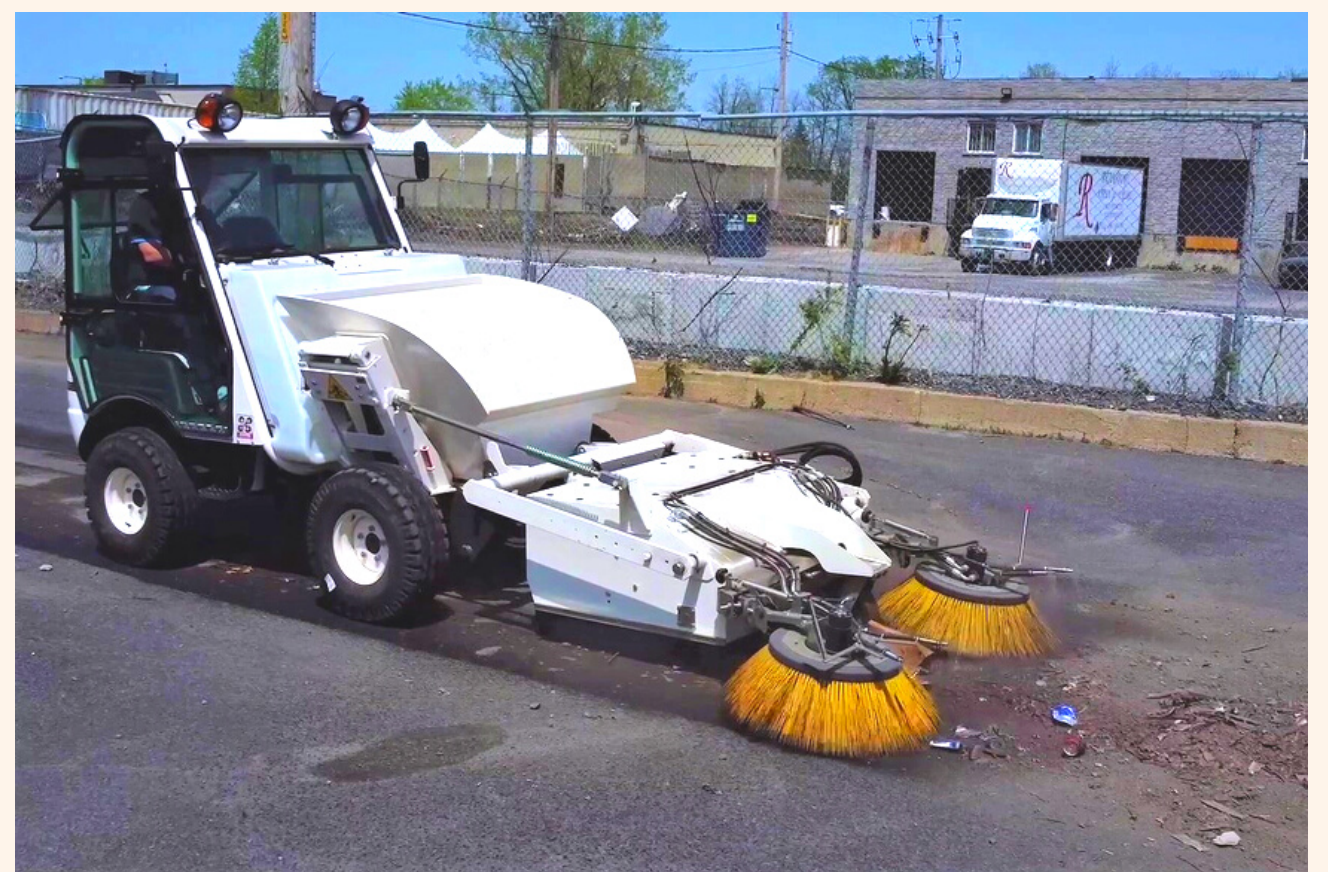
BD202 is designed for your most challenging debris

Wet sand, broken glass, rocks, wood - this machine does it all. With a capacity of 1.3 cubic yards (1 cu m) and a side-tip / high-tip skip, it is the best option for industrial applications. The BD202 has permanent 4x4 drive as standard and hydrostatic transmission, making it perfect for both flat and the most uneven terrains.



BD202 is the ultimate sweep and wash mobile cleaning unit for

- Cities and municipalities
- Outdoor cleaning contractors
- Airports & seaports
- Transit authorities
- Industrial property mgmt. companies
- Manufacturing facilities
- Casinos
- Commercial property mgmt. companies
- Military
- Distribution centers
- Correctional facilities



Key attributes

- Compact and lightweight machine (5000 lbs / 2268 kg);
- Easy to trailer if required;
- Reliable, low noise and low consumption Kubota engine;
- Permanent 4-wheel drive / rear steering allows litter removal in hard to reach areas;
- Sweep path 77 in. (1956 mm) up to 103 in. (2616 mm);
- Front brooms lateral displacement up to 15 in. (381 mm) for tight curbs;
- High seating offers excellent visibility;



- Easy to operate, few controls, ergonomic joystick;
- Optional fully glazed, roomy, sound-proof closed cabin;
- Side unloading and tipping system at 59 in. height (1500 mm);
- Optional pressure washer gun 2175 psi;
- Tilt seat platform provides quick access to engine compartment for periodic inspection/maintenance;
- **Coming in 2023: new options for multipurpose year-round use! - snow broom | snow plow | towable salt spreader | towable cart.**

Built to suit your needs

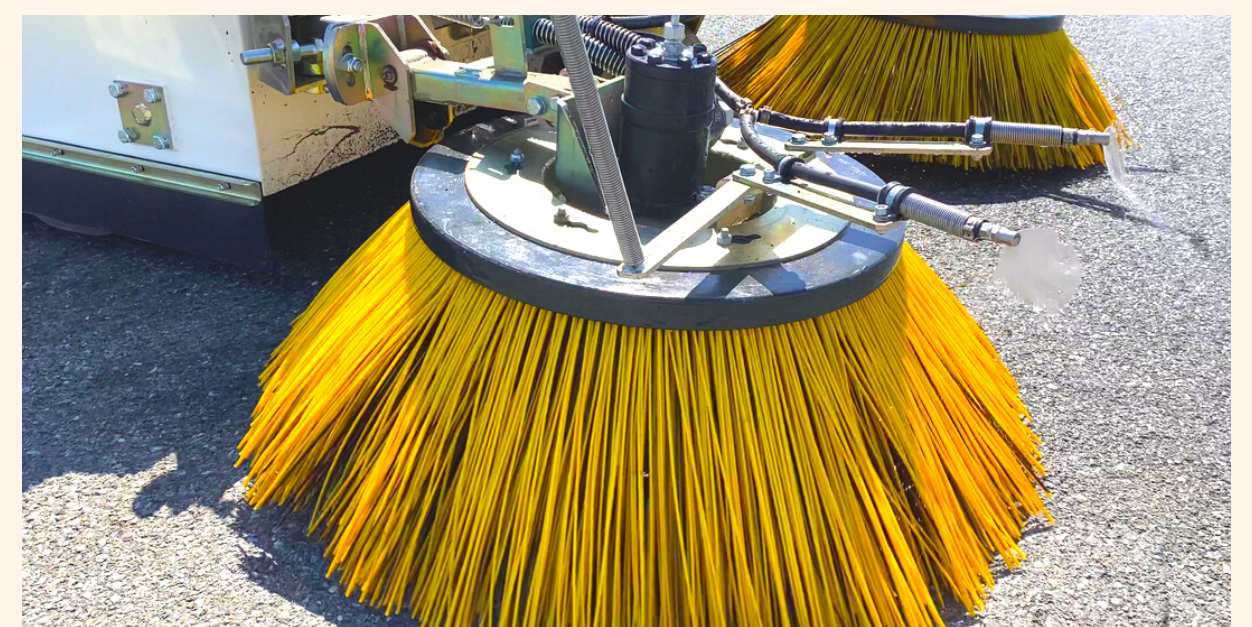
Configure the BD202 according to your specific requirements

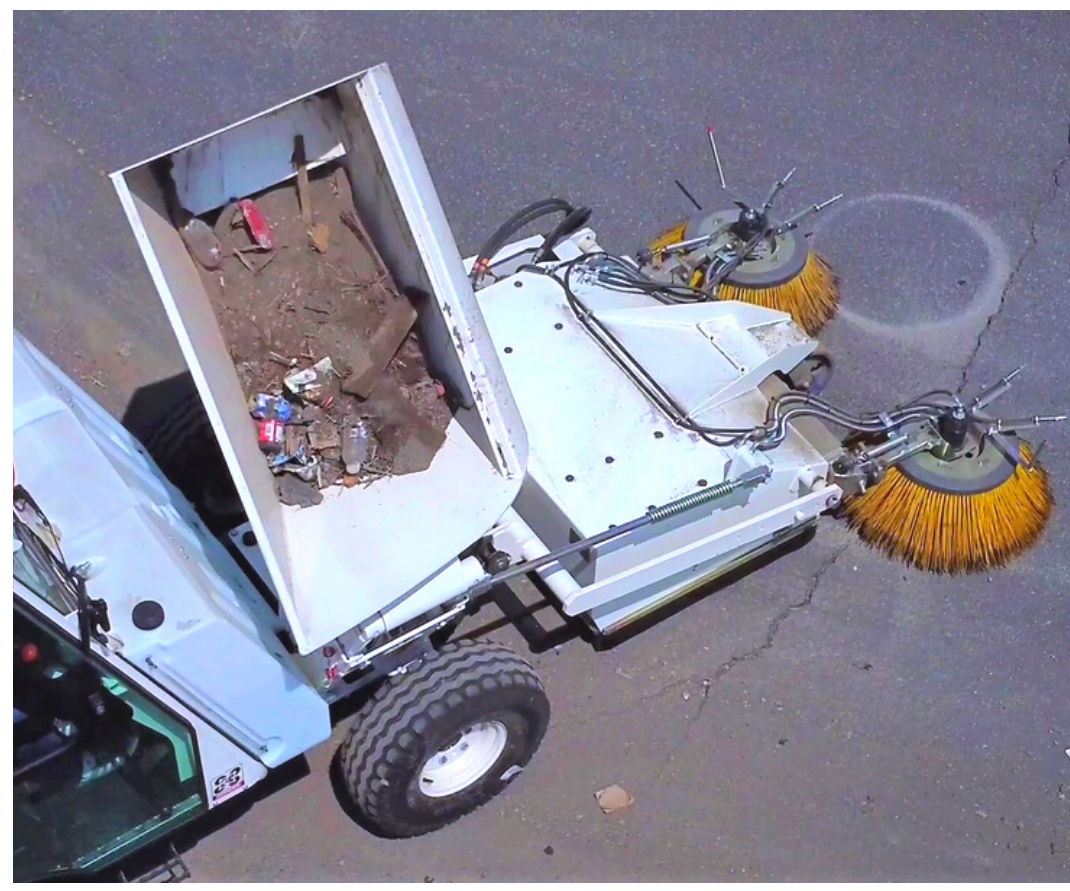
- Soundproof closed cabin with heater
- Air conditioning
- Ergonomic, adjustable operator seat with air suspension system
- Upper door in hopper with automatic opening in loading operation.
- Pressure washer gun
- Towing hitch ball with power socket

To request a quote

www.excelwayusa.com

Models - BD202 – request a quote





Excelway® BD202 Data & Performance Information

GENERAL

Unladen weight	5071 lbs (2300 kg)
Height	90 in. (2286 mm)
Width	86 in. (2184 mm)
Length extended	196 in. (4978 mm)
Length folded and stored	138 in. (3505 mm)

ENGINE

Make	KUBOTA
Model	V1505-E4B
Power	18.5 kW (24.8 HP)
No. cylinders	4
Emissions	Stage V - EPA Tier 4
Consumption	6.47 L/h (1.71 gal./h)

DRIVING

Traction	4 wheel drive
Max. speed	12.4 mph (20 km/h)
Max. operation speed	12.4 mph (20 km/h)
Gradeability (at full load)	42%
Min. turning radius	165 in. (4191 mm)
Tires	Front & rear: 10.0/80-12"TL (10PR)

WASTE HOPPER

Capacity	1.17 cu.yd. (894.52 L)
Payload	4,409 lbs (2,000 kg)
Material	Steel
Tipping height	59 in. (1500 mm)
Tipping width	35.4 in. (900 mm)

SWEEPING SYSTEM

Sweeper unit capacity	65 gal. (246 L)
No. brooms	3
Main broom dimension	47 in. (1194 mm)
Side brooms (2) dimension	33 in. (838 mm) each
Port and arms material	Steel
Total sweep path	77 in. up to 103 in. (2616 mm)
Sprinklers	4

WATER

Capacity	92.5 gal. (350 L)
Material	Rotomolding HDPE
High pressure washer	3.3 gal./min (12.5 L/min) 2175 psi (150 bar)
Low pressure dust control	3.3 gal./min (12.5 L/min) 36.25 psi (2.5 bar)

OTHER

Transmission	2 speed hydrostatic transmission Permanent 4 wd "COMPEN® SYSTEM"
Steering	Hydraulic steering
Cabin features	ROPS/FOPS Right hand drive Front windscreen, front wipers Seat with adjustable height and distance with rolling safety belt 2nd seat for passenger Rotating beacon Rear-view mirror
Brakes	Oil immersed multidisc
Safety	Anti-vandal protection Audible reverse warning



Proud manufacturer of the Excelway product line

Telephone:

- 1-855-651-0444 (toll free - US/Canada)
- 1-450-651-0444 (international)

Fax: 450-651-0447

Email: info@exprolink.com

Address: 2170 rue de la Province, Longueuil QC, Canada J4G 1R7

Website: www.excelwayusa.com