

Item 360 Rear Loader 4060 Options MSRP				
				PowerTrak Commercial Plus includes Silent Drive Tag Axle
			25 Cubic Yard	\$ 155,750
	27 Cubic Yard	\$ 139,750	27 Cubic Yard	\$ 140,750
	32 Cubic Yard	\$ 142,750	32 Cubic Yard	\$ 143,750

***Tag Axle does not include Tires**

Hopper Size 3.64 yd³	
CHASSIS MUST CONFORM WITH HEIL'S MOST CURRENT CHASSIS SPECIFICATIONS FOUND AT WWW.HEIL.COM	

Mounting Options	
Full Factory Mount for Eject Models	\$ 5,175
Semi-Mount - consists of frame cut-off, permanent mounting brackets and light electrical wiring only	\$ 2,300
Strap Mount - chassis must be suitable for temporary mount when received - Heil will connect lights and provide temporary mounting brackets	\$ 1,380
Mount at Dealer Destination	\$ 1,150

Power Take Off / Pump Options	
-------------------------------	--

Clutch Shift Options (Must Select a PTO and Pump)	
Clutch Shift PTO (Formerly Referred to as Hot Shift PTO) * Must select one of the following pumps below.	\$ 4,521
Remote Mount Gear Pump (28-32 Sec Standard Cycle)	STD
Remote Mount Vane Pump - Fast Cycle - (Fast Cycle Pump 16-19 Sec Cycle Time)	\$ 1,845
Remote Mount Tandem Vane - Operate at Idle - (Fast Cycle Pump 16-19 Sec Cycle Time)	\$ 4,333
Extended Shaft PTO with Gear Pump - Formerly Referred to as 890 (28-32 Sec Standard Cycle)	\$ 1,446
Extended Shaft PTO with Vane Pump - Formerly Referred to as 890(Fast Cycle Pump 16-19 Sec Cycle Time)	\$ 5,728
Extended Shaft PTO Operate at Idle - with Tandem Vane Pump - Formerly Referred to as 890 (Fast Cycle Pump 16-19 Sec Cycle Time)	\$ 6,210
Direct Mount Gear Pump - (28-32 Sec Standard Cycle) Requires Custom approval for any 3000 Series Allison Transmission Equipped Chassis	\$ 1,109
Direct Mount Vane (Fast Cycle Pump 16-19 Sec Cycle Time)	\$ 1,846

Constant Drive Options (Must Select a PTO and Pump)	
Constant Drive PTO * Must select one of the following pumps below which will include the pump manifold*	\$ 4,521
Remote Mount Vane Pump - Fast Cycle - (Fast Cycle Pump 16-19 Sec Cycle Time)	\$ 4,694
Extended Shaft PTO with Vane Pump - Formerly Referred to as 897 (Fast Cycle Pump 16-19 Sec Cycle Time)	\$ 5,706

Front Mount Pump Options (Must Select a PTO and Pump)	
Front Mount Vane Pump - Fast Cycle - (Fast Cycle Pump 16-19 Sec Cycle Time)	\$ 7,602
Operate at Idle (OAI) Front Mount Vane Pump (Fast Cycle Pump 16-19 Sec Cycle Time)	\$ 10,583

Certain transmission / chassis configurations may not have proper clearance to allow direct mount or live power systems driven off of the transmission

Lighting and Electrical Accessories	
Hopper Work Light Kit - switch on tailgate	\$ 544
Hopper Work Light Kit - switch in cab	\$ 544
Dual Hopper Work Light Kit - two lights - switch on tailgate	\$ 723
Dual Hopper Work Light Kit - two lights - switch in cab	\$ 723
Dual Work Lights Outside of Hopper	\$ 723
Body Side Backing Assist Lights - reverse activated	\$ 775
LED Body Side Backing Assist Lights - reverse activated	\$ 1,184
Multi-Function LED Strobe / Turn Lamps - includes LED light package for entire unit	\$ 938
Municipal Lights with Dual 7" Amber LEDs & Overhead Flood Light	\$ 2,210
Strobe Light, Amber - upper LH corner of tailgate - in-cab switch	\$ 1,027
Dual Strobe Lights, Amber - upper LH & RH on tailgate - in-cab switch	\$ 1,489
Strobe Light, Amber - mounted right-center, front of body - in-cab switch	\$ 1,027
Dual Front LED Oval Strobe Lights, Amber - in-cab switch	\$ 1,184
Dual Rear LED Oval Strobe Lights, Amber - in-cab switch	\$ 1,184
Dual Rear LED Oval Strobe Lights, Amber - pump activated	\$ 1,184
Strobe Light bracket on upper tailgate	\$ 314
Left Hand Buzzer Kit	\$ 262
Whelen Strobe Lights Kit	\$ 5,418

Container Handling/ Cart Tipper Options - Customer Supplied Cart Tipper are NOT Admissible			
PowerTrack® Commercial		PowerTrack® Commercial Plus	
12,000 Pound Line Pull Drum Winch with Control Kit	\$ 9,655	12,000 Pound Line Pull Drum Winch with Control Kit	\$ 9,655
15,000 Pound Line Pull Reeving Cylinder with Control Kit	\$ 10,724	15,000 Pound Line Pull Reeving Cylinder with Control Kit	\$ 10,724

	15,000 Pound Line Pull Recessed Reaving Cylinder with Control Kit - <i>Not applicable on units less than 25 yard without custom approval</i>	\$	13,430		15,000 Pound Line Pull Recessed Reaving Cylinder with Control Kit - <i>not applicable on units less than 25 yard</i>	\$	13,430
	Roll Bar Adjustable with Control Kit	\$	6,821		Standard Roll Bar with Control Kit - Latch Pivot	\$	6,821
					Roll Bar with Control Kit - Mid-Latch Pivot	\$	6,821
					Roll Bar with Control Kit - Bolster Pivot	\$	6,821
All of the above mechanisms require the latch kit below, except for Arm Mechanism							
	Lip and Latch Kit - to suit application without cart tipper(s)					\$	2,588
	Lip and Latch Kit - to suit application with cart tipper(s)					\$	2,588
	Single Tipper Center Mounted <i>(Choose Tipper Mounting Location if Applicable)</i>					\$	-
	Single Tipper Offset to Curbside <i>(Choose Tipper Mounting Location if Applicable)</i>					\$	-
	Dual Tippers <i>(Choose Tipper Mounting Location if Applicable)</i>					\$	-
	Single Control Valve Section with Control Handle					\$	2,032
	Double Control Valve Section with Control Handles					\$	3,119
	Single Cart Tipper Control Valve, Handle, Plumbing and Hose Kit					\$	3,043
	Dual Cart Tipper Control Valve, Handle, Plumbing and Hose Kit					\$	4,946
	Bayne Cart Tipper - Specify Model - Includes Controls, Valves, Plumbing, and Installation						Bayne
	Customer Installed Single Cart Tipper Kit - Bayne Bracket, Control Valve, Handle, Plumbing and Hose Kit					\$	3,565
	Customer Installed Double Cart Tipper Kit - Bayne Bracket, Control Valve, Handle, Plumbing and Hose Kit					\$	5,460

Camera Systems

All camera systems are mounted with protective camera brackets and twin tailgate flood lights.
Swivel monitor bracket will be provided for dual drive chassis

3rd Eye® Camera Systems & 3rd Eye Digital

Note: Camera systems will accommodate a maximum of 6 cameras.
Not including driver and forward facing cameras included in 3rd Eye® Digital system

	Base 3rd Eye® Single Camera System with 7" STD. monitor and Single Camera Mounted on Tailgate					\$	3,103
	Add on 3rd Eye® Camera (LH Cab) - Camera System Price Adder <i>(Only available if base camera is selected)</i>					\$	863
	Add on 3rd Eye® Camera (RH Cab) - Camera System Price Adder <i>(Only available if base camera is selected)</i>					\$	863
	Add on 3rd Eye® Camera (LH Alley) - Camera System Price Adder <i>(Only available if base camera is selected)</i>					\$	863
	Add on 3rd Eye® Camera (RH Alley) - Camera System Price Adder <i>(Only available if base camera is selected)</i>					\$	863
	3rd Eye® Digital System: Includes (Driver and Forward Facing Camera (Window Unit), and Gateway - (In-Cab Monitor Not Included) - <i>*Digital monitoring service not included and must be purchased and activated through 3rd Eye post delivery *</i>					\$	4,791

AWTI™ Radar Systems - Must Select Camera from 3rd Eye Camera Options above

	AWTI™ Radar System used in conjunction with 3rd Eye Cameras					\$	2,151
--	---	--	--	--	--	----	-------

Load Cell Scale Systems

	Heil Optimum Payload System (HOPS) using Air-Weigh Axle Scales					\$	13,394
	Air-Weigh™ Axle Scale System without Interlock					\$	12,495

Auxiliary Axles Options

*** NOTE: All axles MUST BE installed with tires so chassis can be re-certified to new GAWR and GVWR ratings**

Watson & Chalin™ Options

	Watson & Chalin™ Rigid Axle: 25,000 pound capacity, hub piloted or 20" spoke wheel hubs, 30/30 brake chambers, automatic slack adjusters, 1,300 cubic inch air tank and regulator kit - for <i>pusher</i> applications					\$	21,687
--	--	--	--	--	--	----	--------

Hendrickson™ Options

	Hendrickson™ Steerable Pusher Axle: 20,000 pound capacity					\$	21,993
--	---	--	--	--	--	----	--------

*** Note: All auxiliary applications MUST BE approved by Heil prior to order acceptance**

Auxiliary Axle Tire Options

PowerTrack® Commercial		PowerTrack® Commercial Plus			
255/70R-22.5 - Qty(2) load range H, 5,510 pound single max load at 120 psi with Steel Wheels	\$	3,438	255/70R-22.5 - Qty(2) load range H, 5,510 pound single max load at 120 psi with Steel Wheels	\$	3,438
275/70R-22.5 - Qty(2) load range H, 7,000 pound single max load at 120 psi with Steel Wheels	\$	4,343	275/70R-22.5 - Qty(2) load range H, 7,000 pound single max load at 120 psi with Steel Wheels	\$	4,343
			255/70R-22.5 - load range H, 5,510 pound single max load at 120 psi with rim - 4 tires installed, Pusher and Tag	\$	7,000
			275/70R-22.5 - load range H, 7,000 pound single max load at 120 psi with rim - 4 tires installed, Pusher and Tag	\$	8,850
Upgrade to Polished Aluminum Wheels (Set of Two)	\$	2,232	Upgrade to Polished Aluminum Wheels (Set of Two)	\$	2,232

Body Options

PowerTrack® Commercial		PowerTrack® Commercial Plus			
Hopper Floor Overlay Kit (3/16" - 150,000 psi)	\$	1,837			
PowerTrak Comm. H.D. Contractors Package (incl. 3/16" hopper floor overlay liner and 10 ga hopper wall overlay liners @ 400 BHN - 145,000 psi)				\$	3,355

Body Front Head Closure Kit	\$	1,175
Body Front Head Splash Guard (Extends the front head an extra 11.5")	\$	508
Hydraulic Tailgate Locks	\$	6,271
Side Door Interlock Kit - shuts down pump when open (Requires Clutch Shift PTO)	\$	805
Hydraulic Pressure Gauge Kit (shipped loose in cab)	\$	469
High Pressure Filter Kit	\$	1,392
Hydraulic Oil Tank Heater - 500 watt	\$	1,823
Hydraulic Tank Low Oil Level Warning Kit	\$	1,661
In-Body Oil Tank (Custom required for 27 and 32-yard bodies)	\$	1,890
20 lb. Fire Extinguisher with Bracket	\$	760
Dual 20 lb. Fire Extinguisher with Bracket	\$	1,525
Steel Tool Box (18" x 18" x 36") - frame mounted	\$	1,243
Steel Tool Box (18" x 18" x 24") - frame mounted	\$	1,175
Aluminum Toolbox (18" x 18" x 24") - frame mounted *Contingent Upon Available Frame Space* (only one toolbox selection allowed)	\$	1,392
Poly Toolbox (18" x 18" x 24") - frame mounted *Contingent Upon Available Frame Space* (only one toolbox selection allowed)	\$	1,311
Broom and Shovel Rack - mounted on curbside tailgate cover *Includes broom and shovel*	\$	322
Broom and Shovel Rack (Brackets only) mounted on the curbside tailgate cover (Broom and shovel not included)	\$	184
Dual Broom and Shovel Rack - mounted on both curbside and StreetSide tailgate covers *Includes broom and shovel*	\$	644
Dual Broom and Shovel Rack(Brackets Only)mounted on both curbside and StreetSide tailgate covers (Broom and shovel not included)	\$	368
Mud Flaps - anti-sail / anti-splash - mounted ahead of rear tires	\$	368
Mud Flaps - anti-sail / anti-splash - tailgate mounted behind rear tires	\$	476
Mud Guards - steel - mounted ahead of rear tires	\$	508
5 Gallon Cooler and Bracket - frame mounted	\$	713
Return Line Check Valve Kit	\$	775
1/4" Body Floor Kit	\$	3,683
Roof Tube Cover Kit	\$	1,598
Fender Extension Kit	\$	1,117
Spill Kit - In Cab	\$	522
Spill Kit - Front of Body	\$	686
Hydraulic Oil Tank Quick Disconnect Kit - For use with filter buggy	\$	1,251
Anti-Back Pack Valve Kit	\$	1,458
PTO Hour Meter *available only if PTO is selected*	\$	291

CNG Options

If Purchasing top of body or front of body mounted CNG, Heil requires a scope of work (SOW) to be included with Order
If the CNG is pre-installed, Heil requires the vendor (Momentum or Agility) to be included with the Order

CNG Installation - Top of Body Installation

Top Of Body -CNG Installation Charge - Includes brackets, hardware, and mounting of approved CNG system	\$	8,621
Front Of Body -CNG Installation Charge - Includes brackets, hardware, and mounting of approved CNG system	\$	8,621

Warranty Options

Extended Complete Body Warranty Options

Two (2) Year Complete Heil Body Warranty (Months 13-24) (Maximum 4,000 hrs. of Operation)	\$	5,117
Three (3) Year Complete Heil Body Warranty (Months 13-36) (Maximum 6,000 hrs. of Operation)	\$	10,331
Four (4) Year Complete Heil Body Warranty (Months 13-48) (Maximum 8,000 hrs. of Operation)	\$	15,462
Five (5) Year Complete Heil Body Warranty (Months 13-60) (Maximum 10,000 hrs. of Operation)	\$	20,577

Extended Cylinder Warranty Options

Two (2) Year All Cylinder Warranty (Months 13-24) (Maximum 4,000 hrs. of Operation)	\$	1,734
Three (3) Year All Cylinder Warranty (Months 13-36) (Maximum 6,000 hrs. of Operation)	\$	3,577
Four (4) Year All Cylinder Warranty (Months 13-48) (Maximum 8,000 hrs. of Operation)	\$	5,326
Five (5) Year All Cylinder Warranty (Months 13-60) (Maximum 10,000 hrs. of Operation)	\$	6,842

Extended Hydraulic Pump and Valve Warranty Options *Not needed if purchasing extended complete body warranty*

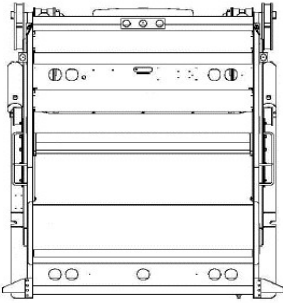
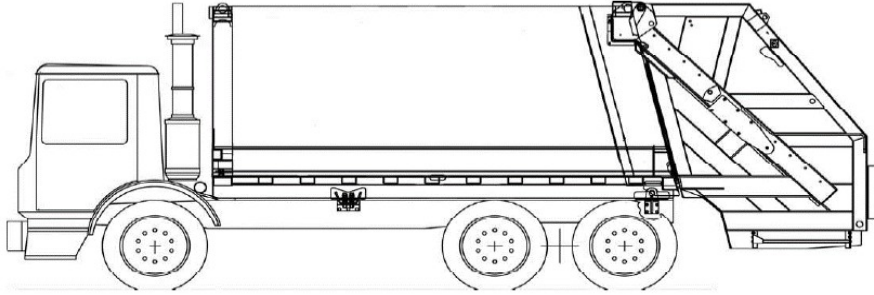
Two (2) Year Hydraulic Pump and Valve Warranty (Months 13-24) (Maximum 4,000 hours of operation)	\$	1,704
Three (3) Year Hydraulic Pump and Valve Warranty (Months 13-36) (Maximum 6,000 hours of operation)	\$	3,512
Four (4) Year Hydraulic Pump and Valve Warranty (Months 13-48) (Maximum 8,000 hours of operation)	\$	5,223
Five (5) Year Hydraulic Pump and Valve Warranty (Months 13-60) (Maximum 10,000 hours of operation)	\$	6,709

Paint Options

NOTE: LIST PAINT CODES ON PAINT DIAGRAM

Customized Paint Color - Paint Color Code NOT included in the Color Smart Brochure	\$	604
Two Tone Paint	\$	2,277
Paint Stripping - first stripe	\$	1,921
Paint Stripping - each additional stripe	QTY	1 \$ -
Metallic Paint	\$	10,412
Clear coat Finish	\$	2,663
Anti-Graffiti Clear coat Finish	\$	3,832
Prime Paint Only - deduct	\$	(1,150)

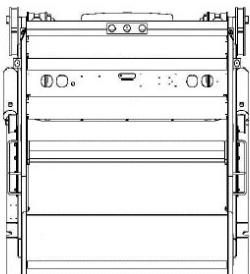
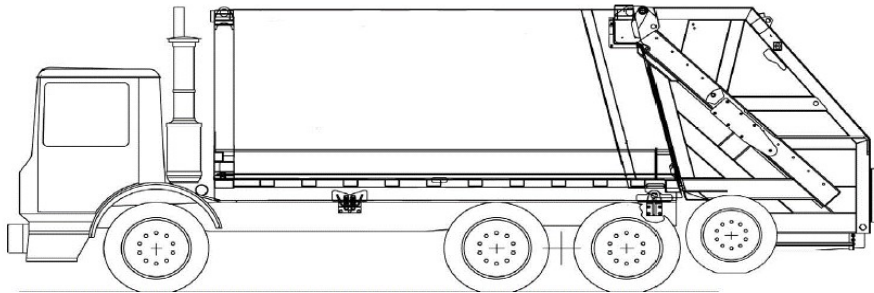
**Powertrak™ Commercial
Paint Stripe and Accessory Requirements**



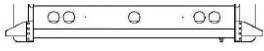
Paint and Options Layout Detail
Use this Form to Describe Paint Schemes
Be Specific About Dimensions and Details

Sales Order #		Submitted by	
Customer			
Paint Color 1			
Paint Color 2			
Paint Color 3			
Chassis Make			
Chassis Model			
Wheelbase			
Body Size		Approved by	

**Powertrak™ Commercial Plus
Paint Stripe and Accessory Requirements**



Paint and Options Layout Detail
Use this Form to Describe Paint Schemes
Be Specific About Dimensions and Details



Sales Order #		Submitted by	
Customer			
Paint Color 1			
Paint Color 2			
Paint Color 3			
Chassis Make			
Chassis Model			
Wheelbase			
Body Size			

Bayne Cart Tippers

Bayne Cart Tippers

Model	Description	Notes	One Per Truck Price		Two Per Truck Price	
BTL1112	Rotary Actuated	Use for rear loading	<input type="checkbox"/>	\$9285	<input type="checkbox"/>	\$16,872
BTL208-12	Rotary Actuated	Use for rear loading	<input type="checkbox"/>	\$10,085	<input type="checkbox"/>	\$16,718
MBTL180	Rotary Actuated	Use for rear loading - no packer blade interference with proper installation	<input type="checkbox"/>	\$9,173	<input type="checkbox"/>	\$14,894
TL1116	Rotary Actuated	Use for rear loading	<input type="checkbox"/>	\$10,032	<input type="checkbox"/>	\$16,616
Revolution HD	Rotary Actuated	Use for rear loading	<input type="checkbox"/>	\$9,709	<input type="checkbox"/>	\$15,969
TL1120	Rotary Actuated	Use for side or rear loading	<input type="checkbox"/>	\$10,032	<input type="checkbox"/>	\$14,616
Taskmaster	Direct Cylinder Actuated	Use for rear loading - modifications may be required for operation with commercial container mechanisms	<input type="checkbox"/>	\$7,277	<input type="checkbox"/>	\$11,107
GRL1110	Rotary Actuated	Grabber model for rear loading - can be used with roll bar	<input type="checkbox"/>	\$12,005		N/A
GTL1110**	Rotary Actuated	Grabber model for side or rear loading	<input type="checkbox"/>	\$15,691		N/A
All Tippers above include Bayne Bracket, Control Valve, Handle, Plumbing and Hose Kit -						
** The Taskmaster Hi-Lift and GTL series may not be used with commercial container mechanisms						
Note: For non-traditional dumping heights, vertical lifts are available on most models						

Bayne Carry Cans

MODEL	DESCRIPTION	NOTES	Price	
1910-0010	3 yard Carry Can with right side mounted cart tipper (single pin)	Includes single BTL208-12 (Bayne Can Only) Does not include body hydraulics and must be selected from the price guide	<input type="checkbox"/>	\$ 12,545
		Safety Yellow Paint	<input type="checkbox"/>	STD
		Special Color Paint	<input type="checkbox"/>	\$ 700
Totals				