

Item 2446 Options MSRP EC-2 Cranes - 5' Boom

Standard Features

- 10 ft Hard-Wired Control
- Comprehensive 2-year warranty starting at in-service

Options

- Manual rotation or power rotation
- Short pedestal or tall pedestal

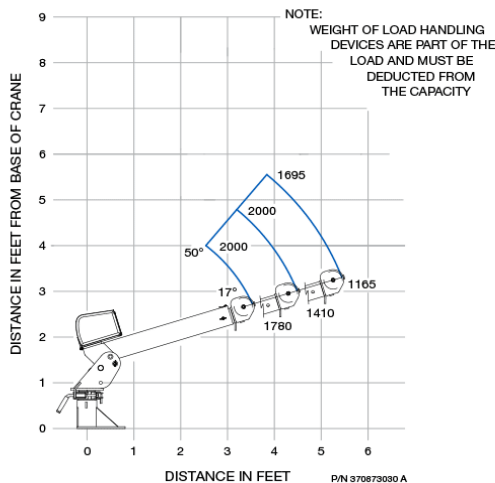
Specifications

- Capacity: 2,000 lb
- Rating: 6,500 ft-lb
- Reach: 5 ft
- Rotation: 325° manual rotation & 355° power rotation
- Cable: 25 ft of 1/4"
- Chassis GVW: 5,200 lb min
- Weight: 230 lbs
- Boom Angle: 17° to 50°
- Hoist Speed: 9 fpm
- Motor: 12V DC
- Outrigger Requirements: Jackleg extending minimum 3' 9" from centerline of truck

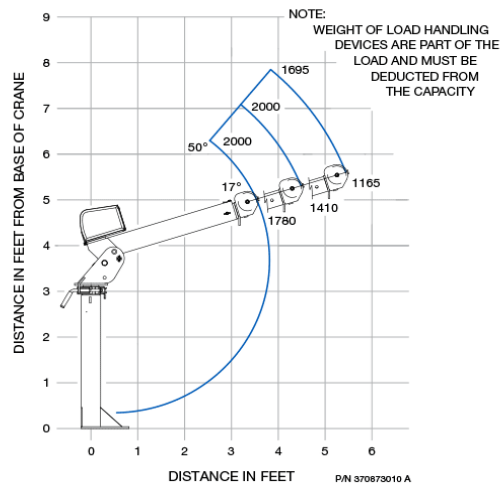


Econo-Ton II/R, 5' Boom

Short Pedestal



Standard Pedestal, 3'



Model	Part Number	Description	List Price
EC-2 Manual	370870010	5' Boom, manual rotation, standard pedestal	\$5,348
EC-2 Manual	370870030	5' Boom, manual rotation, short pedestal	\$5,150
EC-2 Powered	370871010	5' Boom, power rotation, standard pedestal	\$8,699
EC-2 Powered	370871030	5' Boom, power rotation, short pedestal	\$8,406

EC-2 Cranes – 7' Boom

Standard Features

- 10 ft Hard-Wired Control
- Comprehensive 2-year warranty starting at in-service

Options

- Manual rotation or power rotation
- Short pedestal or tall pedestal

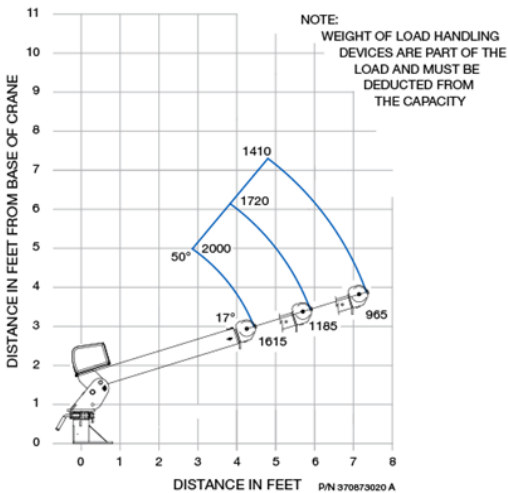
Specifications

- Capacity: 2,000 lb
- Rating: 6,500 ft-lb
- Reach: 7 ft
- Rotation: 325° manual rotation & 355° power rotation
- Cable: 25 ft of 1/4"
- Chassis GVW: 5,200 lb min
- Weight: 280 lbs
- Boom Angle: 17° to 50°
- Hoist Speed: 9 fpm
- Motor: 12V DC
- Outrigger Requirements: Jackleg extending minimum 3' 9" from centerline of truck

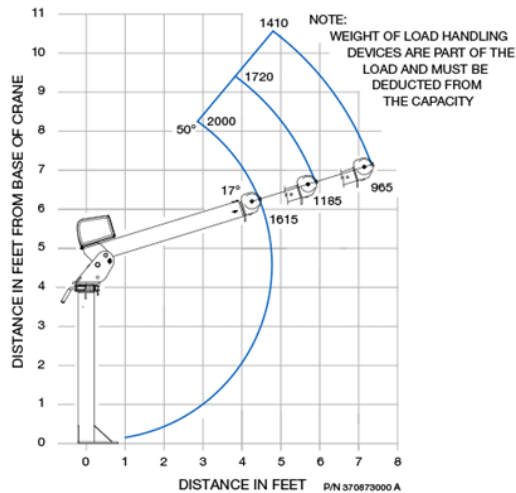


Econo-Ton II/R, 7' Boom

Short Pedestal



Standard Pedestal, 4'



Model	Part Number	Description	List Price
EC-2 Manual	370870000	7' Boom, manual rotation, standard pedestal	\$7000
EC-2 Manual	370870020	7' Boom, manual rotation, short pedestal	\$7300
EC-2 Powered	370871000	7' Boom, power rotation, standard pedestal	\$10,302
EC-2 Powered	370871020	7' Boom, power rotation, short pedestal	\$10,750

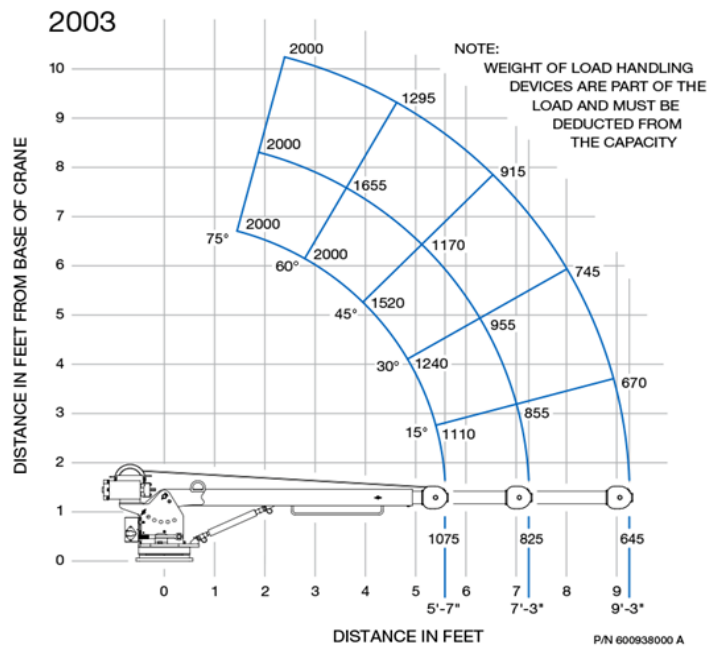
EC-2X Crane

Standard Features

- 15 ft Hard-Wired Control
- 6-position boom elevation
- Comprehensive 2-year warranty starting at in-service

Specifications

- Capacity: 2,000 lb
- Rating: 6,000 ft-lb
- Reach: 9 ft
- Rotation: 360° continuous manual rotation
- Cable: 50 ft of 1/4"
- Chassis GVW: 8,000 lb min
- Weight: 385 lbs
- Boom Angle: 0° to 75°
- Hoist Speed: 30 fpm
- Motor: 12V DC
- Outrigger Requirements: Jackleg extending minimum 3' 3" from centerline of truck



Model	Part Number	Description	List Price
EC-2X	600900000	Manual rotation and extension	\$13,250

EHC-3² Cranes

Standard Features

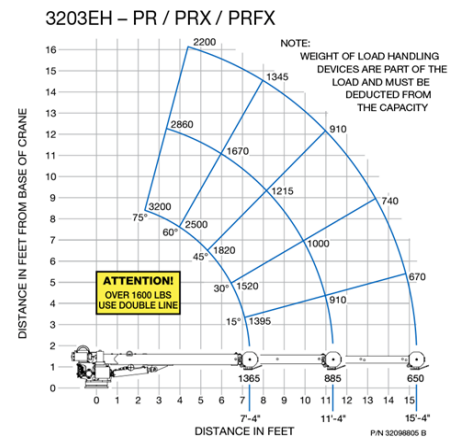
- 100% stability around truck with Titan 16 body and outriggers
- Proportional control for NexStar models
- Meets or exceeds ASME B30.5
- 370° rotation with sealed slewing drive (NexStar)
- Comprehensive 2-year warranty starting at in-service

Options

- NexStar, wireless, or hard-wired control
- Electric or hydraulic hoist
- Hydraulic, Manual-Hydraulic, or Manual extension
- LED boom tip lights

Specifications

- Capacity: 3,200 lb
- Rating: 10,000 ft-lb
- Reach: 15 ft
- Rotation: 360° continuous for hard-wired and wireless
- Cable: 62 ft of 7/32"
- Chassis GVW: 8,800 lb min
- Weight: 690 lbs
- Boom Angle: -5° to 75°
- Hoist Speed: 30 fpm
- Electric Supply: 12V
- Outrigger Requirements: Jackleg extending minimum 3' 9" from centerline of truck



Model	Part Number	Description	List Price
EHC-3² PR Hard-Wired Control	320989003	Manual boom extensions to 15'	\$19750
EHC-3² PRX Hard-Wired Control	320989002	Hydraulic boom extension to 11', manual extension to 15'	\$20050
EHC-3² PRFX Hard-Wired Control	320990001	Hydraulic boom extension to 15'	\$17,170
EHC-3² PR Wireless Control	320989023	Manual boom extension to 15', with tether cable	\$19100
EHC-3² PRX Wireless Control	320989024	Hydraulic boom extension to 11', manual extension to 15', with tether cable	\$20,633
EHC-3² PRFX Wireless Control	320990004	Hydraulic boom extension to 15', with tether cable	\$21,390
EHC-3² PR NexStar 4 Wireless	320992002	Hydraulic Planetary Hoist – Manual boom extension to 15', with tether cable	\$25,013
EHC-3² PRX NexStar 4 Wireless	320992001	Hydraulic Planetary Hoist – Hydraulic boom extension to 11', manual extension to 15', with tether cable	\$27,597
EHC-3² PRFX NexStar 4 Wireless	320992003	Hydraulic Planetary Hoist – Hydraulic boom extension to 15', with tether cable	\$27,904

HC-3² Cranes

Standard Features

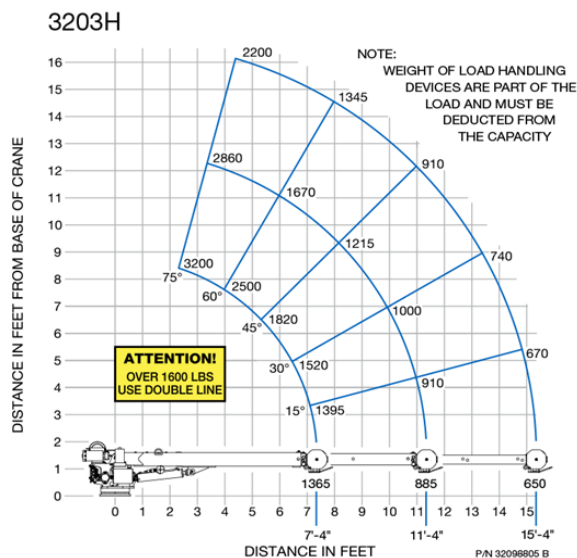
- 100% stability around truck with Titan 16 body and outriggers
- Meets or exceeds ASME B30.5
- Comprehensive 2-year warranty starting at in-service

Options

- Wireless, or hard-wired control

Specifications

- Capacity: 3,200 lb
- Rating: 10,000 ft-lb
- Reach: 15 ft
- Rotation: 370° non-continuous
- Cable: 62 ft of 7/32"
- Chassis GVW: 8,800 lb min
- Weight: 640 lbs
- Boom Angle: -3° to 75°
- Hoist Speed: 27 fpm
- Hydraulic Power: 5 gpm @ 2,200 psi
- Outrigger Requirements: Jackleg extending minimum 3' 9" from centerline of truck



Model	Part Number	Description	List Price
HC-3 ² Hard-Wired Control	320989001	Power extension to 11', manual extension to 15'	\$28,050
HC-3 ² Wireless Control	320989000	Power extension to 11', manual extension to 15', with tether cable	\$28,980

EHC-4 Cranes – 16'



Standard Features

- 100% stability around truck with Titan 16 or Titan 38 body and outriggers
- Proportional control for NexStar models
- Meets or exceeds ASME B30.5
- 370° rotation with sealed slewing drive (NexStar)
- Comprehensive 2-year warranty starting at in-service

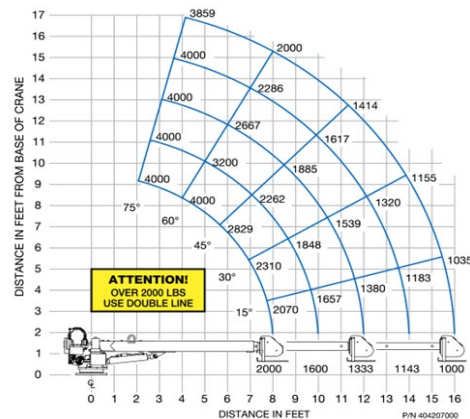
Options

- NexStar, wireless, or hard-wired control
- Electric or hydraulic hoist
- LED boom tip lights

Specifications

- Capacity: 4,000 lb
- Rating: 16,000 ft-lb
- Reach: 16 ft
- Rotation: 360° continuous for hard-wired and wireless models
- Cable: 80 ft of 5/16"
- Chassis GVW: 10,500 lb min
- Weight: 890 lbs
- Boom Angle: -5° to 75°
- Hoist Speed: 30 fpm
- Electric Supply: 12V
- Outrigger Requirements: Truck must be equipped with minimum 16,000 ft-lb rated outriggers

4004EH - 16' Boom



Model	Part Number	Description	List Price
EHC-4 Hard-Wired Control	404181001	Hydraulic boom extension to 12', manual extension to 16'	\$26785
EHC-4 Wireless Control	404181030	Hydraulic boom extension to 12', manual extension to 16', with tether cable	\$27,461
EHC-4 NexStar 4 Wireless	404242003	Hydraulic boom extension to 12', manual extension to 16', with tether cable	\$34,952

EHC-4 Cranes – 20'



Standard Features

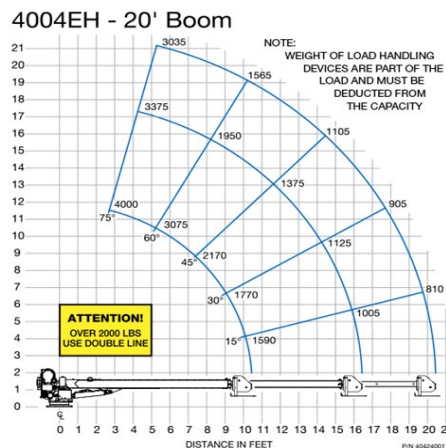
- 100% stability around truck with Titan 16 or Titan 38 body and outriggers
- Proportional control for NexStar models
- Open hook attachment
- Meets or exceeds ASME B30.5
- 370° rotation with sealed slewing drive (NexStar)
- Comprehensive 2-year warranty starting at in-service

Options

- NexStar, wireless, or hard-wired control
- Electric or hydraulic hoist
- LED boom tip lights

Specifications

- Capacity: 4,000 lb
- Rating: 16,000 ft-lb
- Reach: 20 ft
- Rotation: 360° continuous for hard-wired and wireless models
- Cable: 80 ft of 5/16"
- Chassis GVW: 10,500 lb min
- Weight: 890 lbs
- Boom Angle: -5° to 75°
- Hoist Speed: 30 fpm
- Electric Supply: 12V
- Outrigger Requirements: Truck must be equipped with minimum 16,000 ft-lb rated outriggers



Model	Part Number	Description	List Price
EHC-4 Hard-Wired Control	404240020	Hydraulic boom extension to 16', manual extension to 20'	\$26,785
EHC-4 Wireless Control	404240034	Hydraulic boom extension to 16', manual extension to 20', with tether cable	\$28,070
EHC-4 NexStar 4 Wireless	404243003	Hydraulic boom extension to 16', manual extension to 20', with tether cable	\$34,127

EHC-5 Cranes

Standard Features

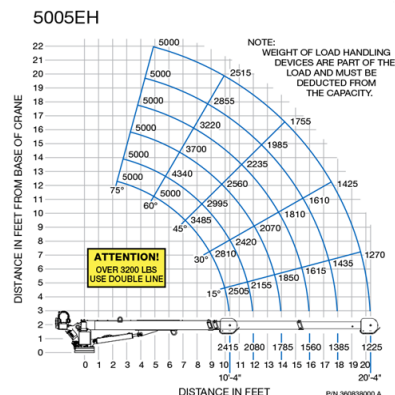
- 100% stability around truck with Titan 38 body and outriggers
- Proportional control for NexStar models
- Meets or exceeds ASME B30.5
- Open hook attachment
- 450° rotation with sealed slewing drive (NexStar)
- Comprehensive 2-year warranty starting at in-service

Options

- NexStar, wireless, or hard-wired control
- LED boom tip lights

Specifications

- Capacity: 5,000 lb
- Rating: 25,000 ft-lb
- Reach: 20 ft
- Cable: 80 ft of 5/16"
- Chassis GVW: 14,500 lb min
- Weight: 1,455 lbs
- Boom Angle: -14° to 75°
- Hoist Speed: 36 fpm
- Electric Supply: 12V
- Outrigger Requirements: Truck must be equipped with minimum 38,000 ft-lb rated outriggers



Model	Part Number	Description	List Price
EHC-5 Hard-Wired Control	360645000	360 degree continuous rotation	\$33,785
EHC-5 Hard-Wired Control	360645001	370 degree non-continuous rotation	\$30,494
EHC-5 Wireless Control	360645010	360 degree continuous rotation, with tether cable	\$34,203
EHC-5 Wireless Control	360645011	370 degree non-continuous rotation, with tether cable	\$31,709
EHC-5 NexStar 4 Wireless	360646003	450 degree non-continuous rotation, with tether cable	\$37,105

HC-5 Crane



Standard Features

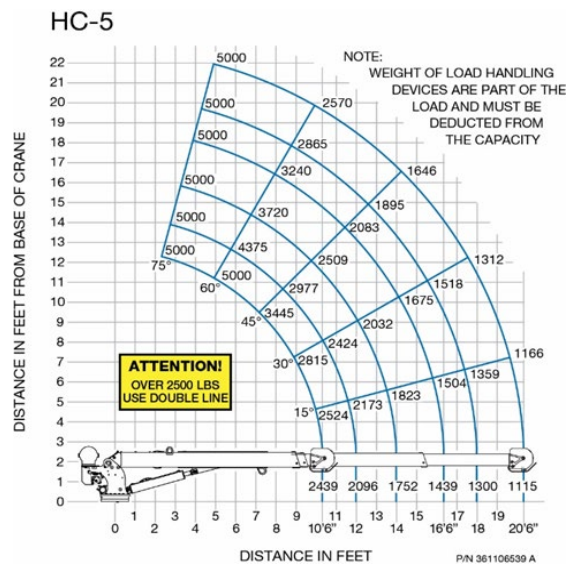
- 100% stability around truck with Titan 38 body and outriggers
- Proportional control
- Meets or exceeds ASME B30.5
- Open hook attachment
- 450° rotation with sealed slewing drive
- Comprehensive 2-year warranty starting at in-service

Options

- LED boom tip lights
- Quick-release personnel basket adapter

Specifications

- Capacity: 5,000 lb
- Rating: 25,000 ft-lb
- Reach: 20 ft
- Cable: 80 ft of 5/16"
- Chassis GVW: 14,500 lb min
- Weight: 1,390 lbs
- Boom Angle: -14° to 75°
- Hoist Speed: 60 fpm
- Hydraulic Power: 8 gpm @ 2,750 psi
- Outrigger Requirements: Truck must be equipped with minimum 38,000 ft-lb rated outriggers



Model	Part Number	Description	List Price
HC-5 NexStar 4 Wireless	361106530	450 degree non-continuous rotation, with tether cable	\$41,900

EHC-6 Cranes



Standard Features

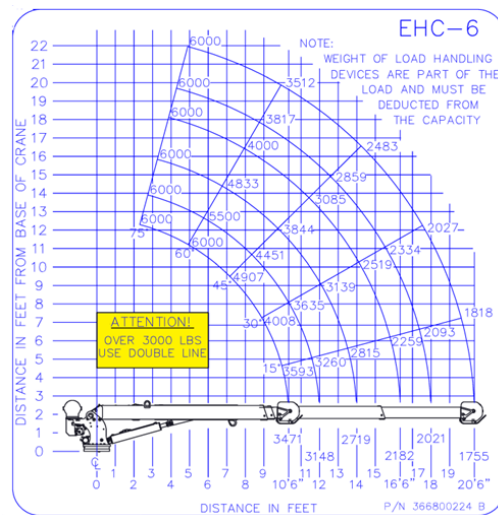
- 100% stability around truck with Titan 38 body and outriggers
- Proportional control for NexStar models
- Meets or exceeds ASME B30.5
- Open hook attachment
- 450° rotation with sealed slewing drive (NexStar)
- Comprehensive 2-year warranty starting at in-service

Options

- NexStar, wireless, or hard-wired control
- LED boom tip lights

Specifications

- Capacity: 6,000 lb
- Rating: 36,000 ft-lb
- Reach: 20 ft
- Cable: 95 ft of 3/8"
- Chassis GVW: 14,500 lb min
- Weight: 1,670 lbs
- Boom Angle: -14° to 75°
- Hoist Speed: 36 fpm
- Electric Supply: 12V
- Outrigger Requirements: Truck must be equipped with minimum 38,000 ft-lb rated outriggers



Model	Part Number	Description	List Price
EHC-6 Hard-Wired Control	366600002	360 degree continuous rotation	\$34,125
EHC-6 Hard-Wired Control	366780002	370 degree non-continuous rotation	\$35,068
EHC-6 Wireless Control	366600005	360 degree continuous rotation, with tether cable	\$36,221
EHC-6 Wireless Control	366790003	370 degree non-continuous rotation, with tether cable	\$31,704
EHC-6 NexStar 4 Wireless	366664003	450 degree non-continuous rotation, with tether cable	\$40,165

HC-6 Cranes



Standard Features

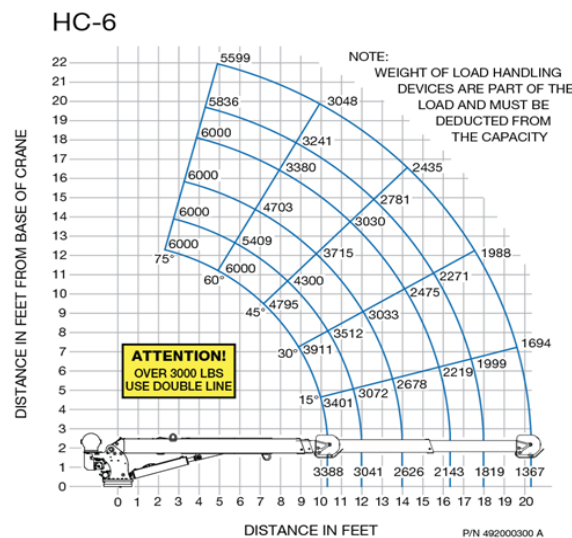
- 100% stability around truck with Titan 38 body and outriggers
- Proportional control
- Meets or exceeds ASME B30.5
- Open hook attachment
- 450° rotation with sealed slewing drive
- Comprehensive 2-year warranty starting at in-service

Options

- NexStar or hard-wired control
- LED boom tip lights
- Quick-release personnel basket adapter

Specifications

- Capacity: 6,000 lb
- Rating: 36,000 ft-lb
- Reach: 20 ft
- Cable: 80 ft of 5/16"
- Chassis GVW: 14,500 lb min
- Weight: 1,670 lbs
- Boom Angle: -14° to 75°
- Hoist Speed: 60 fpm
- Hydraulic Power: 8 gpm @ 2,750 psi
- Outrigger Requirements: Truck must be equipped with minimum 38,000 ft-lb rated outriggers



Model	Part Number	Description	List Price
HC-6 NexStar 4 Wireless Control	492000010	450 degree non-continuous rotation, with tether cable	\$38,848

HC-7 Cranes



Standard Features

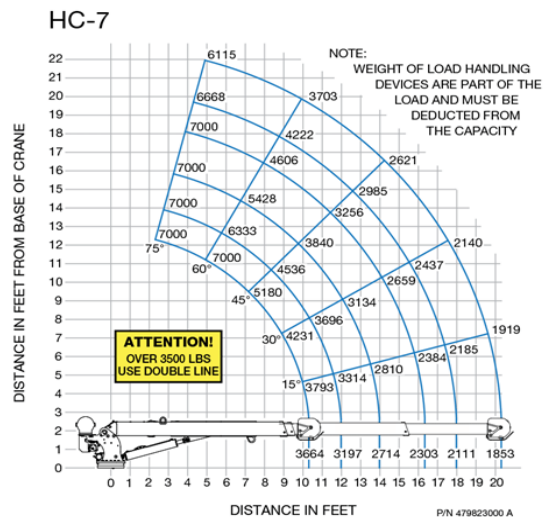
- 100% stability around truck with Titan 38 body and outriggers
- Proportional control
- Meets or exceeds ASME B30.5
- Open hook attachment
- 450° rotation with sealed slewing drive
- Comprehensive 2-year warranty starting at in-service

Options

- NexStar or hard-wired control
- LED boom tip lights
- Personal fall protection
- Quick-release personnel basket adapter

Specifications

- Capacity: 7,000 lb
- Rating: 38,000 ft-lb
- Reach: 20 ft
- Cable: 95 ft of 3/8"
- Chassis GVW: 14,500 lb min
- Weight: 1,705 lbs
- Boom Angle: -14° to 75°
- Hoist Speed: 55 fpm
- Hydraulic Power: 8 gpm @ 2,750 psi
- Outrigger Requirements: Truck must be equipped with minimum 38,000 ft-lb rated outriggers



Model	Part Number	Description	List Price
HC-7 NexStar 4 Wireless Control	477000008	450 degree non-continuous rotation, with tether cable	\$42,550

HC-7x Crane



Standard Features

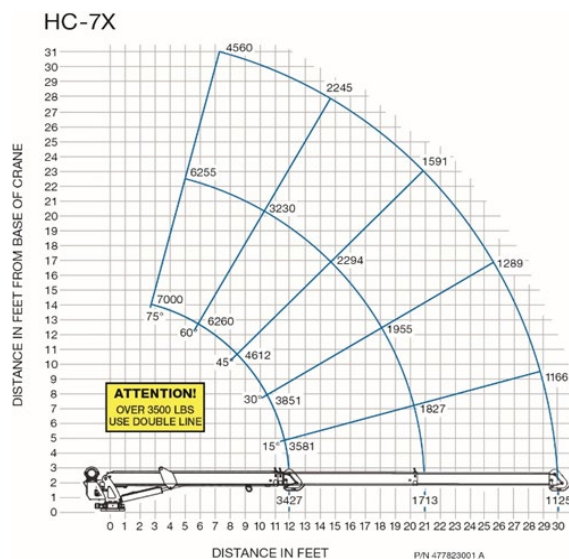
- 100% stability around truck with Titan 38 body and outriggers
- Proportional control
- Meets or exceeds ASME B30.5
- Open hook attachment
- 450° rotation with sealed slewing drive
- Comprehensive 2-year warranty starting at in-service

Options

- LED boom tip lights
- Personal fall protection
- Quick-release personnel basket adapter

Specifications

- Capacity: 7,000 lb
- Rating: 43,000 ft-lb
- Reach: 30 ft
- Cable: 120 ft of 3/8"
- Chassis GVW: 19,500 lb min
- Weight: 1,865 lbs
- Boom Angle: -12° to 75°
- Hoist Speed: 55 fpm
- Hydraulic Power: 8 gpm @ 2,750 psi
- Outrigger Requirements: Truck must be equipped with minimum 43,000 ft-lb rated outriggers



Model	Part Number	Description	List Price
HC-7x NexStar 4 Wireless	477000003	450 degree non-continuous rotation, with tether cable	\$43125

HC-8 Crane

Standard Features

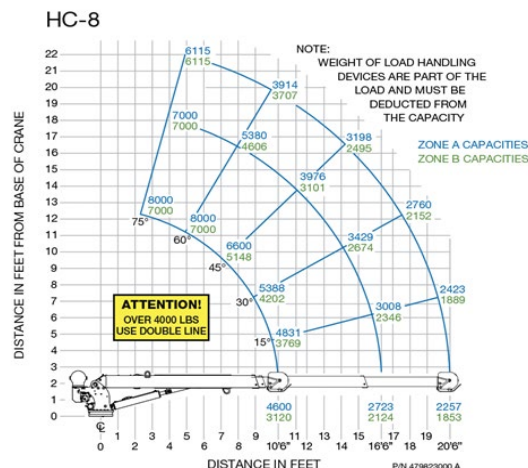
- 100% stability around truck with Titan 38 body and outriggers
- Proportional control
- Meets or exceeds ASME B30.5
- Open hook attachment
- 450° rotation with sealed slewing drive
- Comprehensive 2-year warranty starting at in-service

Options

- LED boom tip lights
- Personal fall protection
- Quick-release personnel basket adapter

Specifications

- Capacity: 8,000 lb
- Rating: 49,000 ft-lb
- Reach: 20 ft
- Cable: 95 ft of 3/8"
- Chassis GVW: 19,500 lb min
- Weight: 1,705 lbs
- Boom Angle: -14° to 75°
- Hoist Speed: 55 fpm
- Hydraulic Power: 8 gpm @ 2,750 psi
- Outrigger Requirements: Truck must be equipped with minimum 49,000 ft-lb rated outriggers



Model	Part Number	Description	List Price
HC-8 NexStar 4 Wireless Control	479000012	450 degree non-continuous rotation, with tether cable	\$45,550

HC-8x Crane



Standard Features

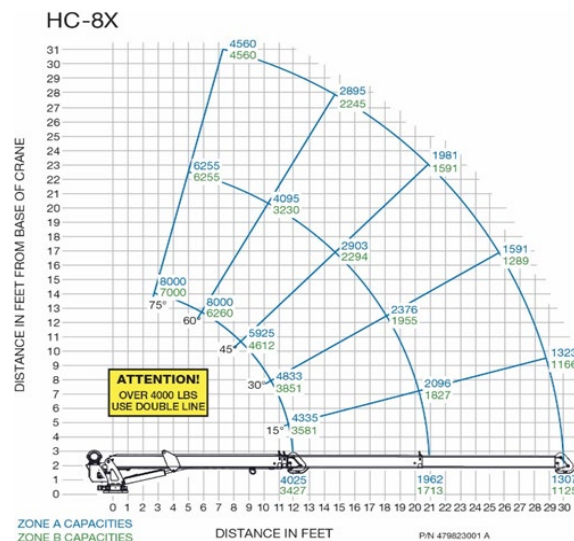
- 100% stability around truck with Titan 38 body and outriggers
- Proportional control
- Meets or exceeds ASME B30.5
- Open hook attachment
- 450° rotation with sealed slewing drive
- Comprehensive 2-year warranty starting at in-service

Options

- LED boom tip lights
- Personal fall protection
- Quick-release personnel basket adapter

Specifications

- Capacity: 8,000 lb
- Rating: 52,000 ft-lb
- Reach: 30 ft
- Cable: 120 ft of 3/8"
- Chassis GVW: 19,500 lb min
- Weight: 1,870 lbs
- Boom Angle: -12° to 75°
- Hoist Speed: 55 fpm
- Hydraulic Power: 8 gpm @ 2,750 psi
- Outrigger Requirements: Truck must be equipped with minimum 52,000 ft-lb rated outriggers



Model	Part Number	Description	List Price
HC-8x NexStar 4 Wireless	479000011	450 degree non-continuous rotation, with tether cable	\$46,429

8406H Cranes



Standard Features

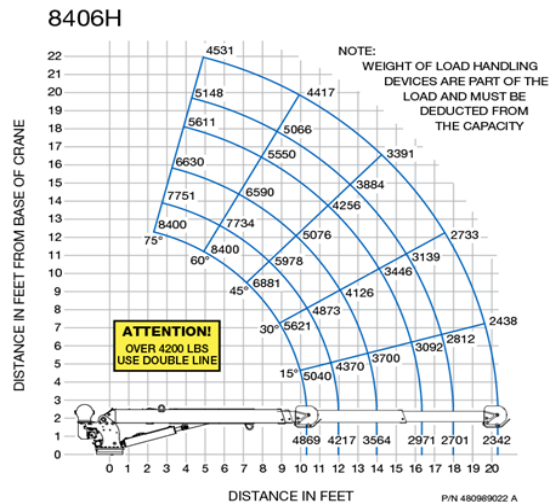
- 100% stability around truck with Titan 50 body and outriggers
- Proportional control
- Meets or exceeds ASME B30.5
- Open hook attachment
- 450° rotation with sealed slewing drive
- Comprehensive 2-year warranty starting at in-service

Options

- NexStar or hard-wired control
- LED boom tip lights
- Personal fall protection
- Quick-release personnel basket adapter

Specifications

- Capacity: 8,400 lb
- Rating: 50,000 ft-lb
- Reach: 20 ft
- Cable: 95 ft of 3/8"
- Chassis GVW: 20,500 lb min
- Weight: 1,755 lbs
- Boom Angle: -14° to 75°
- Hoist Speed: 60 fpm
- Hydraulic Power: 13 gpm @ 2,750 psi
- Outrigger Requirements: Truck must be equipped with minimum 50,000 ft-lb rated outriggers



Model	Part Number	Description	List Price
8406H NexStar 4 Wireless	480989008	450 degree non-continuous rotation, with tether cable	\$45,550

HC-10 Crane



Standard Features

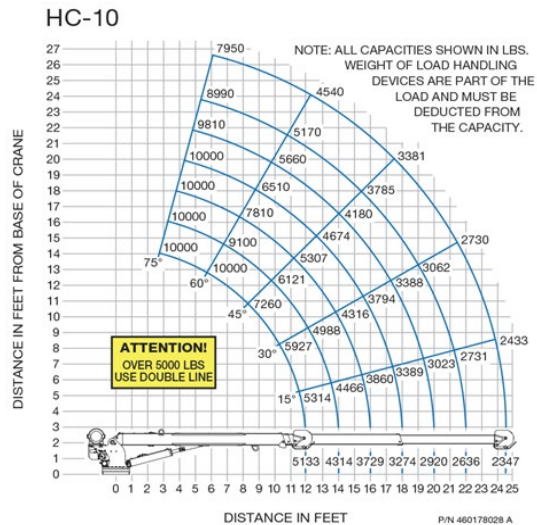
- 100% stability around truck with Titan 60 body and outriggers
- Proportional control
- Meets or exceeds ASME B30.5
- Open hook attachment
- 450° rotation with sealed slewing drive
- Comprehensive 2-year warranty starting at in-service

Options

- LED boom tip lights
- Personal fall protection
- Quick-release personnel basket adapter

Specifications

- Capacity: 10,000 lb
- Rating: 60,000 ft-lb
- Reach: 25 ft
- Cable: 120 ft of 7/16"
- Chassis GVW: 26,000 lb min
- Weight: 1,900 lbs
- Boom Angle: -12° to 75°
- Hoist Speed: 60 fpm
- Hydraulic Power: 10 gpm @ 3,000 psi
- Outrigger Requirements: Truck must be equipped with minimum 60,000 ft-lb rated outriggers



Model	Part Number	Description	List Price
HC-10 NexStar 4 Wireless Control	460179005	450 degree non-continuous rotation, with tether cable	\$49,250

HC-12s Crane



Standard Features

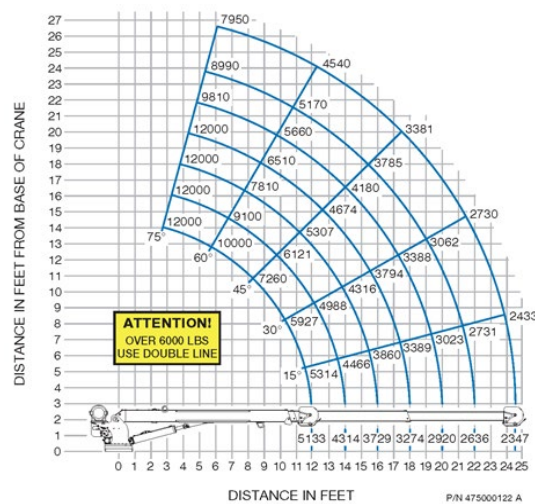
- 100% stability around truck with Titan 60 body and outriggers
- Proportional control
- Meets or exceeds ASME B30.5
- Open hook attachment
- 450° rotation with sealed slewing drive
- Comprehensive 2-year warranty starting at in-service

Options

- LED boom tip lights
- Personal fall protection
- Quick-release personnel basket adapter

Specifications

- Capacity: 12,000 lb
- Rating: 60,000 ft-lb
- Reach: 25 ft
- Cable: 120 ft of 7/16"
- Chassis GVW: 26,000 lb min
- Weight: 1,900 lbs
- Boom Angle: -12° to 75°
- Hoist Speed: 60 fpm
- Hydraulic Power: 10 gpm @ 3,000 psi
- Outrigger Requirements: Truck must be equipped with minimum 60,000 ft-lb rated outriggers



Model	Part Number	Description	List Price
HC-12s NexStar 4 Wireless Control	475000012	450 degree non-continuous rotation, with tether cable	\$50,750

HC-12 Crane



Standard Features

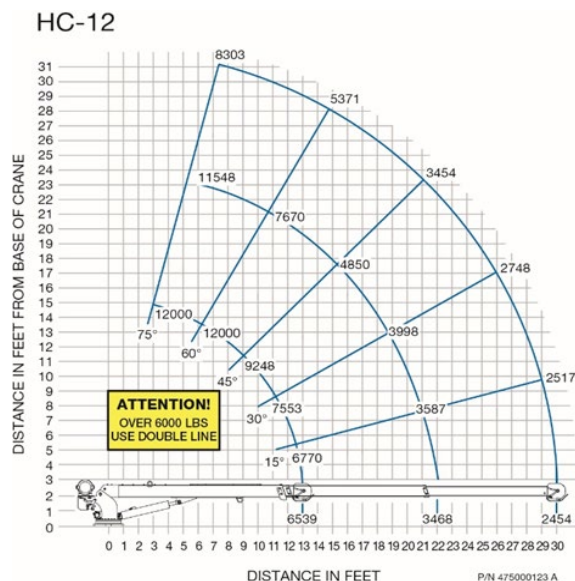
- 100% stability around truck with Titan 85 body and outriggers
- Proportional control
- Meets or exceeds ASME B30.5
- Open hook attachment
- 450° rotation with sealed slewing drive
- Comprehensive 2-year warranty starting at in-service

Options

- LED boom tip lights
- Jib
- Personal fall protection
- Quick-release personnel basket adapter

Specifications

- Capacity: 12,000 lb
- Rating: 85,000 ft-lb
- Reach: 30 ft
- Cable: 120 ft of 7/16"
- Chassis GVW: 29,000 lb min
- Weight: 3,140 lbs
- Boom Angle: -12° to 75°
- Hoist Speed: 60 fpm
- Hydraulic Power: 10 gpm @ 3,000 psi
- Outrigger Requirements: Truck must be equipped with minimum 85,000 ft-lb rated outriggers



Model	Part Number	Description	List Price
HC-12 NexStar 4 Wireless Control	475000014	450 degree non-continuous rotation, with tether cable	\$50,750

HC-14 Crane



Standard Features

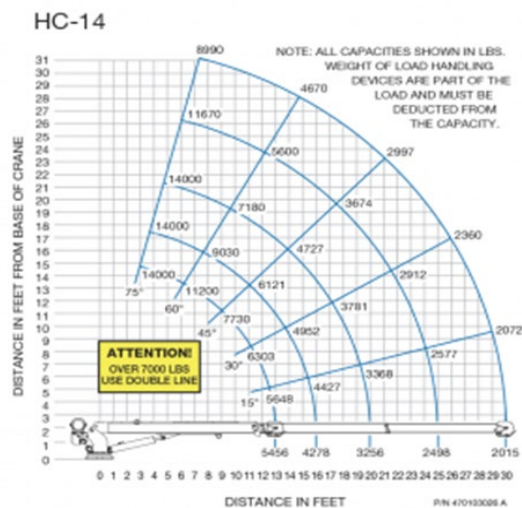
- 100% stability around truck with Titan 85 body and outriggers
- Proportional control
- Meets or exceeds ASME B30.5
- Open hook attachment
- 450° rotation with sealed slewing drive
- Comprehensive 2-year warranty starting at in-service

Options

- LED boom tip lights
- Jib
- Personal fall protection
- Quick-release personnel basket adapter

Specifications

- Capacity: 14,000 lb
- Rating: 85,000 ft-lb
- Reach: 30 ft
- Cable: 120 ft of 1/2"
- Chassis GVW: 29,000 lb min
- Weight: 3,200 lbs
- Boom Angle: -12° to 75°
- Hoist Speed: 60 fpm
- Hydraulic Power: 15 gpm @ 2,800 psi
- Outrigger Requirements: Truck must be equipped with minimum 85,000 ft-lb rated outriggers



Model	Part Number	Description	List Price
HC-14 NexStar 4 Wireless	470103006	450 degree non-continuous rotation, with tether cable	\$51,750

Crane Accessories

Boom Tip Lights			
Part Number	Description	List Price	Installed
475300089	Boom Tip Light, 1 light, for Models EHC-3 & EHC-4	\$422	
475300090	Boom Tip Light, 1 light, for Models EHC-3 & EHC-4 Installed (Includes Above Part Number)		\$486
475300075	Boom Tip Lights, 2 lights, for Models EHC-3 & EHC-4	\$701	
475300076	Boom Tip Lights, 2 lights, for Models EHC-3 & EHC-4 Installed (Includes Above Part Number)		\$791
475300084	Boom Tip Light, 1 light, for Models EHC-5, HC-5, HC-6	\$403	
475300085	Boom Tip Light, 1 light, for Models EHC-5, HC-5, HC-6 Installed (Includes Above Part Number)		\$484
475300071	Boom Tip Lights, 2 lights, for Models EHC-5, HC-5, HC-6	\$704	
475300072	Boom Tip Lights, 2 lights, for Models EHC-5, HC-5, HC-6 Installed (Includes Above Part Number)		\$783
475300082	Boom Tip Light, 1 light, for Models EHC-6, HC-7, HC-8, HC-9 - HC-12	\$405	
475300083	Boom Tip Light, 1 light, for Models EHC-6, HC-7, HC-8, HC-9 - HC-12 Installed (Includes Above Part Number)		\$483
475300065	Boom Tip Lights, 2 lights, for Models EHC-6, HC-7 - HC-12	\$704	
475300070	Boom Tip Lights, 2 lights, for Models EHC-6, HC-7, HC-8, HC-9 - HC-12 Installed (Includes Above Part Number)		\$783
475300087	Boom Tip Light, 1 light, for Models HC-7x & HC-8X	\$404	
475300088	Boom Tip Light, 1 light, for Models HC-7x & HC-8X Installed (Includes Above Part Number)		\$481
475300060	Boom Tip Lights, 2 lights, for Models HC-7x & HC-8X Installed (Includes 475300065 Part Number)		\$786
475300080	Boom Tip Light, 1 light, for Model HC-14	\$404	
475300081	Boom Tip Light, 1 light, for Model HC-14 Installed (Includes Above Part Number)		\$482
475300068	Boom Tip Lights, 2 lights, for Model HC-14	\$704	
475300069	Boom Tip Lights, 2 lights, for Model HC-14 Installed (Includes Above Part Number)		\$783

NexStar 4 Remote Reminder Chime Kit			
Part Number	Description	List Price	Installed
366823460	NexStar Remote Reminder Chime Kit	\$206	
366823461	NexStar Remote Reminder Chime Kit, Installed (Includes Above Part Number) (Factory upfit only)		\$550
366823477	NexStar Remote Reminder Chime Kit, Installed (use with Titan Connect)		\$221

Accessories			
Part Number	Description	List Price	Installed
560195015	Boom Support (EHC-5 – HC-14 cranes)	\$715	
715064020	Boom Support (EHC-3.2 & EHC-4 cranes)	\$438	
738493225	Outrigger Pad, 18" x 18"x1" (45,000 lbs. vertical, 11 lbs. weight rating in psi for all cranes)	\$189	
460179250	Custom Paint for Crane	\$804	

Crane Accessories

Outriggers & Jacklegs			
Part Number	Description	List Price	Installed
700320000	Detachable Jackleg (14" long) *	\$190	
700343000	Medium Duty Screw Base Detachable Jackleg (16" long) *	\$279	
700347000	Medium Duty Screw Base Detachable Jackleg (20" long) *	\$329	
700351000	Medium Duty Screw Base Detachable Jackleg (24" long) *	\$352	
700354000	Medium Duty Screw Base Detachable Jackleg (27" long) *	\$426	
200745000	Heavy-Duty Quick Detachable Jackleg (20" long) *	\$513	
320980001	Manual Out; Up/Down Outriggers (16,000 ft-lb) 4004 Model or Smaller Crane (for single rear wheel vehicle)	\$1,406	
320980000	Manual Out; Up/Down Outriggers (16,000 ft-lb) 4004 Model or Smaller crane (for dual rear wheel vehicle)	\$1,653	
738896000	Full Manual Outrigger Assembly (38,000 ft-lb) Right Side Crane (for use with HC-7 or smaller crane)	\$3,088	
738843000	Manual I/O - Hydraulic U/D - Outrigger Assembly (38,000 ft-lb) Right Side Crane (for use with HC-7 or smaller crane)	\$7,477	
738493000	Full Hydraulic Outrigger Assembly (52,000 ft-lb rear of body / 43,000 ft-lb sides of body) Right Side Crane (for use with HC-8X or smaller crane - required when mounting an HC-7X, HC-8, or HC-8X crane to a Titan 38 body)	\$7,547	
560570100	Hydraulic In/Out, Up/Down Outriggers (50,000 ft-lb) Right Side Crane (for 8406H crane or equivalent)	\$9,245	
560142000	Manual In/Out, Up/Down Outriggers (50,000 ft-lb) Right Side Crane (for 8406H crane or equivalent)	\$3,646	
560570101	Full hydraulic outriggers, single slide - Right Side Crane (use 24" or 30" bumper designed for single slide outrigger) (Titan 60 body - 60,000 ft-lb)**	\$9,386	
772020001	Hydraulic In/Out, Up/Down Outriggers (85,000 ft-lb) Right Side Crane (for Titan 60 & 85 body)	\$11,232	

* Jacklegs do not provide 360-degree stability for cranes of 10,000 ft. lbs.

** The single slide outriggers have less than 100% capacity on truck sides to maintain stability

Call the factory for quotes on left side crane outriggers and accessories.