



ITEM #:	1204
BRAND	Maxon
MODEL	Light Duty Series
DISCOUNT	30%

**Available Units:**

MODEL	Platform Material	MSRP	DISCOUNTED PRICE
C2-30-1342TP27	Steel	\$4800.00	\$3360.00
C2-60-1342TP38	Steel	\$5220.00	\$3654.00
C2-60-1342TP42	Steel	\$5400.00	\$3780.00
C2-60-1342EA27	Aluminum	\$6390.00	\$4473.00
C2-60-1342EA38	Aluminum	\$6750.00	\$4725.00
C2-60-1342EA48	Aluminum	\$7440.00	\$5208.00
C2-60-1342GS27	Grip Strut Steel	\$5400.00	\$3780.00
C2-60-1342BG27	Bar Grate Steel	\$5580.00	\$3906.00
C2-60-1542TP27	Steel	\$5220.00	\$3654.00
C2-60-1542TP38	Steel	\$5640.00	\$3948.00
C2-60-1542TP42	Steel	\$5850.00	\$4095.00
C2-60-1542EA27	Aluminum	\$6780.00	\$4746.00
C2-60-1542EA38	Aluminum	\$7200.00	\$5040.00
C2-60-1542EA48	Aluminum	\$7920.00	\$5544.00
C2-60-1542GS27	Grip Strut Steel	\$5880.00	\$4116.00
C2-60-1542BG27	Bar Grate Steel	\$6030.00	\$4221.00
C2-54-1342TP27	Steel	\$4800.00	\$3360.00
C2-54-1342TP38	Steel	\$5220.00	\$3654.00

MODEL	Platform Material	MSRP	DISCOUNTED PRICE
C2-54-1342TP42	Steel	\$5400.00	\$3780.00
C2-54-1342EA27	Aluminum	\$6390.00	\$4473.00
C2-54-1342EA38	Aluminum	\$6750.00	\$4725.00
C2-54-1342EA48	Aluminum	\$7440.00	\$5208.00
C2-54-1342GS27	Grip Strut Steel	\$5580.00	\$3906.00
C2-54-1342BG27	Bar Grate Steel	\$5580.00	\$3906.00
C2-54-1642TP27	Steel	\$5220.00	\$3654.00
C2-54-1642TP38	Steel	\$5640.00	\$3948.00
C2-54-1642TP42	Steel	\$5850.00	\$4095.00
C2-54-1642EA27	Aluminum	\$6780.00	\$4746.00
C2-54-1642EA38	Aluminum	\$7200.00	\$5040.00
C2-54-1642EA48	Aluminum	\$7920.00	\$5544.00
C2-54-1642GS27	Grip Strut Steel	\$5880.00	\$4116.00
C2-54-1642BG27	Bar Grate Steel	\$6030.00	\$4221.00
C2-60SB-1342TP27	Steel	\$4800.00	\$3360.00
C2-60SB-1342TP38	Steel	\$5220.00	\$3654.00
C2-60SB-1342TP42	Steel	\$5400.00	\$3780.00
C2-60SB-1342EA27	Aluminum	\$6390.00	\$4473.00
C2-60SB-1342EA38	Aluminum	\$6750.00	\$4725.00
C2-60SB-1342EA48	Aluminum	\$7440.00	\$5208.00
C2-60SB-1342GS27	Grip Strut Steel	\$5400.00	\$3780.00
C2-60SB-1342BG27	Bar Grate Steel	\$5580.00	\$3906.00
C2-60SB-1542TP27	Steel	\$5220.00	\$3654.00
C2-60SB-1542TP38	Steel	\$5640.00	\$3948.00
C2-60SB-1542TP42	Steel	\$5850.00	\$4095.00
C2-60SB-1542EA27	Aluminum	\$6780.00	\$4746.00
C2-60SB-1542EA38	Aluminum	\$7200.00	\$5040.00
C2-60SB-1542EA48	Aluminum	\$7920.00	\$5544.00
C2-60SB-1542GS27	Grip Strut Steel	\$5880.00	\$4116.00
C2-60SB-1542BG27	Bar Grate Steel	\$6030.00	\$4221.00
C2-92-1650TP35	Steel	\$5790.00	\$4053.00
C2-92-1650TP41	Steel	\$6420.00	\$4494.00
C2-92-1650EA37	Aluminum	\$7410.00	\$5187.00
C2-92-1650EA41	Aluminum	\$8190.00	\$5733.00
C2-92-1650GS33	Aluminum	\$6450.00	\$4515.00

MODEL	Platform Material	MSRP	DISCOUNTED PRICE
C2-92-1650BG33	Bar Grate Steel	\$6600.00	\$4620.00
C2-92-1650DT33	Steel	\$7410.00	\$5187.00
GPC-X1-LDF	Aluminum	\$12300.00	\$8610.00

**\*Freight is not included in pricing. \***

**Options:**

2 Light Kit	Pickup Series	\$442.00	\$309.40
4 Light Kit	Pickup Series	\$604.00	\$422.80
Pendant Control	Pickup Series	\$258.00	\$180.60
Platform Rubber Bumpers	Pickup Series	\$50.00	\$35.00
Tire Rack	Pickup Series	\$346.00	\$242.20
2 Light Kit	Service Body Series	\$442.00	\$309.40
4 Light Kit	Service Body Series	\$604.00	\$422.80
Pendant Control	Service Body Series	\$387.00	\$270.90
Tire Rack	Service Body Series	\$346.00	\$242.20
Rubber Platform Bumpers	Service Body Series	\$50.00	\$35.00
2 Light Kit	Flatbed/ Stake Body	\$442.00	\$309.40
4 Light Kit	Flatbed/ Stake Body	\$604.00	\$422.80
Pendant Control	Flatbed/ Stake Body	\$258.00	\$180.60
Tire Rack	Flatbed/ Stake Body	\$346.00	\$242.20
Rubber Platform Bumpers	Flatbed/ Stake Body	\$50.00	\$35.00
2 Light Kit	Dump Through	\$442.00	\$309.40
4 Light Kit	Dump Through	\$604.00	\$422.80
Pendant Control	Dump Through	\$258.00	\$180.60
Rubber Platform Bumpers	Dump Through	\$50.00	\$35.00

**\*Tire Racks are only available on gates with one piece platforms.\***

# LIGHT DUTY SERIES

## C2 Stakebed & Van Body

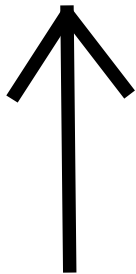
**MAXON®**

### C2 standard features

- Dual hydraulic lifting cylinders
- Maintenance-free components
- Protected / recessed main control with time-out feature
- Steel or aluminum platforms
- Fully-enclosed hydraulic system
- Patent Pending Pre-punched Holes for Camera/Sensors
- Gravity down only

### Optional features

- Hot Dip Galvanized Finish (at no additional charge)
- Light Kits
- Remote Pendant Control
- Rubber Platform Protection Bumpers
- Tire Rack Kit



**Distributed by:**



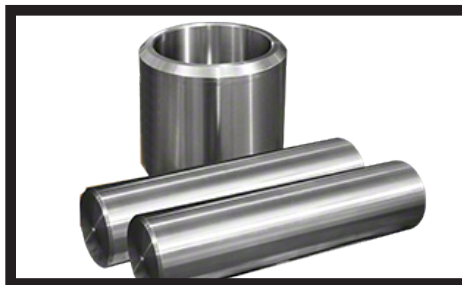
### Enclosed Pump & Motor Assembly

The C2 pump and motor assembly is fully enclosed and shielded from the elements.



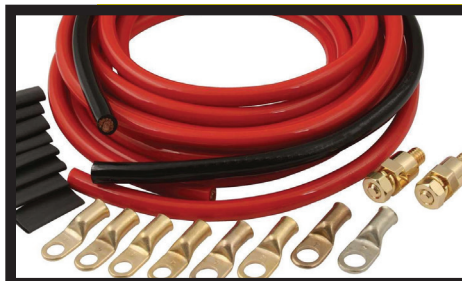
### Main Control with Time-Out Feature

A timed toggle control prevents unauthorized use. It automatically deactivates 90 seconds after operation.



### Maintenance Free Pins & Bushings

Maintenance free pins and bushings allow for years of maintenance free service.



### Power Cable with Full Length Ground

The dedicated ground cable helps to get the maximum lifespan out of the vehicles battery.

M-213-0921



Maxon Lift Corp. 11921 Slauson Ave., Santa Fe Springs, CA 90670  
800.227.4116 Fax 888.771.7713, [www.maxonlift.com](http://www.maxonlift.com)

# LIGHT DUTY SERIES

## C2 Dump Through

**MAXON®**

### C2 standard features

- Dual hydraulic lifting cylinders
- Maintenance-free components
- Protected / recessed main control with time-out feature
- Steel platforms
- Fully-enclosed hydraulic system
- Patent Pending Pre-punched Holes for Camera/Sensors
- Gravity down only

### Optional features

- Hot Dip Galvanized Finish (at no additional charge)
- Light Kits
- Remote Pendant Control
- Rubber Platform Protection Bumpers



### Enclosed Pump & Motor Assembly

The C2 pump and motor assembly is fully enclosed and shielded from the elements.



### Main Control with Time-Out Feature

A timed toggle control prevents unauthorized use. It automatically deactivates 90 seconds after operation.



### Platform Latch for Dump Feature

To activate the liftgate's dump feature, you must activate the latch located on the platform.



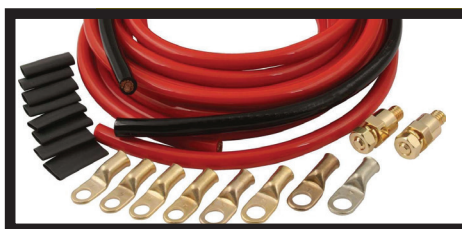
### Locking Pin for Dump Feature

Pin to lock the platform securely in place when dump mode is not in use.



### Maintenance Free Pins & Bushings

Maintenance free pins and bushings allow for years of maintenance free service.



### Power Cable with Full Length Ground

The dedicated ground cable helps to get the maximum lifespan out of the vehicles battery.

**Distributed by:**

M-272-0822



Maxon Lift Corp. 11921 Slauson Ave., Santa Fe Springs, CA 90670  
800.227.4116 Fax 888.771.7713, [www.maxonlift.com](http://www.maxonlift.com)



# LIGHT DUTY SERIES

## C2 Pickup

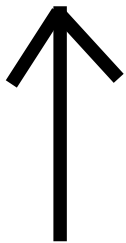
**MAXON®**

### C2 standard features

- Dual hydraulic lifting cylinders
- Maintenance-free components
- Protected / recessed main control with time-out feature
- Steel or aluminum platforms
- Fully-enclosed hydraulic system
- Patent Pending Pre-punched Holes for Camera/Sensors

### Optional features

- Hot Dip Galvanized Finish (at no additional charge)
- Light Kits
- Remote Pendant Control
- Rubber Platform Protection Bumpers
- Tire Rack Kit



**Distributed by:**

M-211-0722



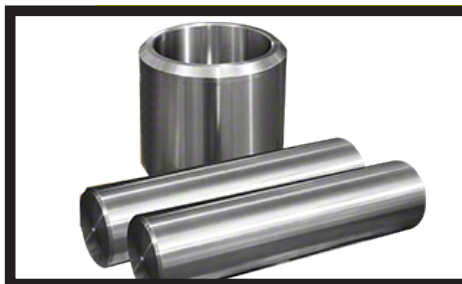
### Enclosed Pump & Motor Assembly

The C2 pump and motor assembly is fully enclosed and shielded from the elements.



### Main Control with Time-Out Feature

A timed toggle control prevents unauthorized use. It automatically deactivates 90 seconds after operation.



### Maintenance Free Pins & Bushings

Maintenance free pins and bushings allow for years of maintenance free service.



### Power Cable with Full Length Ground

The dedicated ground cable helps to get the maximum lifespan out of the vehicles battery.

Maxon Lift Corp. 11921 Slauson Ave., Santa Fe Springs, CA 90670  
800.227.4116 Fax 888.771.7713, [www.maxonlift.com](http://www.maxonlift.com)

# LIGHT DUTY SERIES

## C2 Service Body

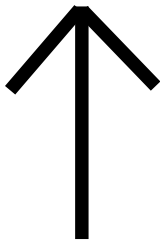
**MAXON®**

### C2 standard features

- Dual hydraulic lifting cylinders
- Maintenance-free components
- Protected / recessed main control with time-out feature
- Steel or aluminum platforms
- Fully-enclosed hydraulic system
- Patent Pending Pre-punched Holes for Camera/Sensors
- Gravity down only

### Optional features

- Hot Dip Galvanized Finish (at no additional charge)
- Light Kits
- Remote Pendant Control
- Rubber Platform Protection Bumpers
- Tire Rack Kit



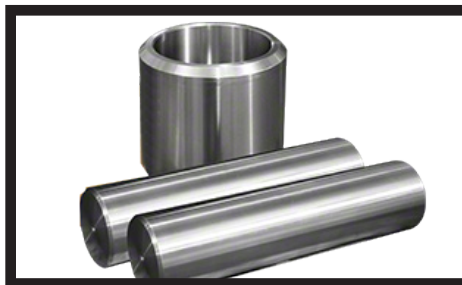
### Enclosed Pump & Motor Assembly

The C2 pump and motor assembly is fully enclosed and shielded from the elements.



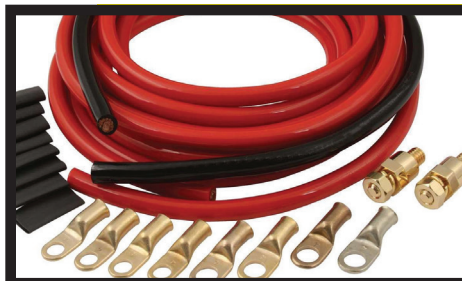
### Main Control with Time-Out Feature

A timed toggle control prevents unauthorized use. It automatically deactivates 90 seconds after operation.



### Maintenance Free Pins & Bushings

Maintenance free pins and bushings allow for years of maintenance free service.



### Power Cable with Full Length Ground

The dedicated ground cable helps to get the maximum lifespan out of the vehicles battery.

**Distributed by:**

M-212-0921



Maxon Lift Corp. 11921 Slauson Ave., Santa Fe Springs, CA 90670  
800.227.4116 Fax 888.771.7713, [www.maxonlift.com](http://www.maxonlift.com)