

6" Jet Pump Model
J6-N45ENTX20

Holland Pump Company
Corporate Office: 7312 Westport Place
West Palm Beach, FL 33413
USA
1-800-451-0769
www.hollandpump.com

PUMP SPECIFICATIONS

Type/Model: Clear Liquids® High-Pressure Cornell 4HH-EM16
Volute: Cast iron ASTM A48, Class 30 Grey Iron
Flanges: 6" Suction , 4" Discharge
Impeller: Enclosed 6 Vane, 15.22" Bronze for Clear Liquid
Solids: .62" diameter compressible spherical solids
Shaft Sleeve: Heat Treated 416 Stainless Steel
Wear Rings: Replaceable Bronze SAE 660 (Double Wear Rings available)
Sealing Arrangement: Packing
Bearings: Heavy duty, grease lubricated, deep groove ball bearings, with a minimum of 50,000 hours bearing life
Priming: Manual Protec #9
Optional Seals: Mechanical seal - Carbon ceramic or Tungsten Carbide, also available is Cycloseal run-dry seal arrangement
Optional Features: 50 CFM Maximum **PRIME³** automatic priming system, discharge valve Val-matic or equal

J6-N45ENTX20				Shutoff Head: 386 feet		
Flow (GPM)	Speed (RPM)	TDH (ft)	PSI	Pump Efficiency (%)	Power (hp)	Max Suction Head (ft) *
1300**	2200	337	146	81	136	16.9
1040	2200	358	155	77	121	22.4
780	2200	373	161	71	104	25.6
520	2200	381	165	61	82.5	26.0

*Max Suction Head is suction lift plus friction losses without risk of suction cavitation
 **Best Efficiency Point

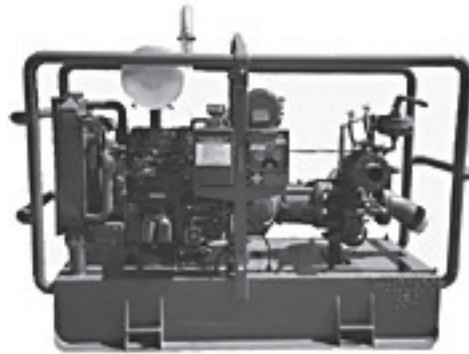
ENGINE SPECIFICATIONS

Model: FTP N45ENTX20
Type: 4 Cylinder, 4 Stroke, Liquid Cooled Diesel Engine
Displacement: 4.5L (274.6cu.in.)
Governor: Electronic
Lubrications: Forced Circulation
Air Cleaner: Dry Type with Replaceable Element
Lube Oil Capacity: 2.9 U.S. Gallons (9L)
Coolant Capacity: 3.4 U.S. Gallons (13L)
Fuel Tank: Integral 240 U.S. Gallon Capacity (#2 Diesel Fuel)
Full Load Operating Time: 60 Hours Minimum
Starter: 12 Volt
Standard Features: Cast Iron Engine Block, Ecoplus Oil and Fuel Filters, Glow Plug, Starting Aid, Integral Inlet and Manifold, Gear Driven Coolant Pump, Cast Iron Exhaust Manifold with Center Side Outlet, Murphy Powerflow control panel: Oil Pressure, Engine Temp, RPM, Hour Meter, Load, Engine Code Diagnostics
 Optional Features: Site or DOT Highway Trailer, Automatic Remote Start and Stop, HANS (Holland Automatic Notification System)
Coupling: SAE Flywheel & Bell housing adaptor, Stromag coupling
FTP Published Performance: Maximum Continuous Power: 141 BHP (104kW)@ 2200 RPM

Holland Pump Company
 Corporate Office: 7312 Westport Place
 West Palm Beach, FL 33413
 USA
 1-800-451-0769
 www.hollandpump.com

6" Jet Pump Model
 J6-N45ENTX20

Approximate Dimensions
 Powered by FTP N45ENTX20 Diesel Engine
 Skid Weight: 6,000 lbs.



Performance Curve Model: J6-N45ENTX20
 Size: 6" Jet Pump

