

## 530U & 533U Specifications:

### General Dimensions:

Available in 11' through 17' inside lengths, in 1' increments with an 84" inside width. 11' and 12' bodies available with 33" sides and 43" ends. 13' through 17' bodies available with 43" sides and 53" ends or 48" sides and 56" ends.

### Sides:

10 gauge high tensile steel with material shedding boxed top rails, full depth 15" rear corner post, pressed "V" braces, 10" front and rear board extension pockets and full length tarp rails.

### Floor:

3/16" AR 450 steel with 2" floor to side radius.

### Front Bulkhead:

10 gauge high tensile steel construction with two bend top flange and two vertical structural angle reinforcements.

### Tailgate:

8 gauge high tensile steel / 7 gauge stainless steel, 6 panel design with fully perimeter box bracing, two intermediate vertical braces and one intermediate horizontal brace and full width lower tailgate pin.

### Tailgate hardware:

Heavy duty cast "tarp friendly" top hardware and cast overshot lower hardware and manual release handle. All stainless on 533U.

### Lights:

Meets all requirements of FMVSS108 with oval stop/tail/turn lights recessed in rear post. All lighting is recessed, shock mounted, complete with factory wiring harness.

### Understructure:

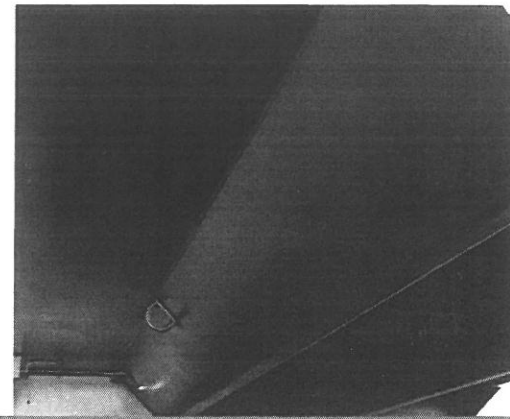
Crossmemberless design using 3/16" X 100K formed 11" trapezoidal longbeams. Lubricated front and rear cross shafts and full width rear bolster.

### Safety Features:

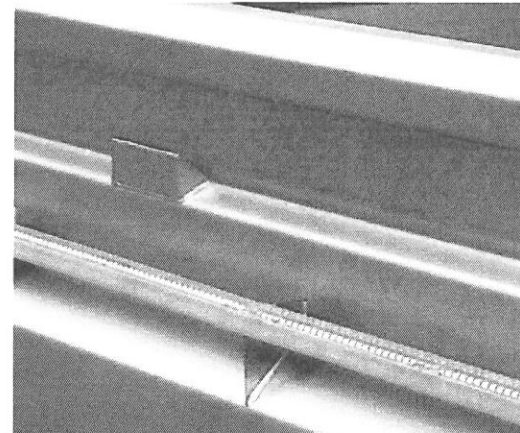
All Galion 530U & 533U bodies are shipped with a "body up" warning light and OSHA required back up alarm.

### Options:

- |                                                                        |                                       |
|------------------------------------------------------------------------|---------------------------------------|
| Nine panel tailgate                                                    | 304 #4 stainless steel construction   |
| Coal door in gate                                                      | 304-2B stainless steel construction   |
| Air high lift tailgate                                                 | 201-LN2B stainless steel construction |
| Air tailgate                                                           | 201 #4 stainless steel construction   |
| Asphalt package                                                        | Mailhot hoist option                  |
| Additional light holes                                                 |                                       |
| Bolt on spreader apron                                                 |                                       |
| 2 way barn door tailgate                                               | (Hardware and hinges not stainless)   |
| Weld on horizontal and/or vertical side braces.                        |                                       |
| L.E.D. lighting ILO incandescent                                       |                                       |
| Various cab protectors (sleek, widths to 90", long version)            |                                       |
| Smooth side design with two horizontal "V" braces ILO vertical braces. |                                       |



The crossmemberless understructure of the 530U and 533U bodies use 3/16" X 100K formed 11" formed trapezoidal longbeams.



Pictured is the horizontal pressed "V" brace which is standard equipment on both the 530U and 533U.

FULL FACTORY WARRANTY  
complete parts and service available  
through nationwide authorized distributors

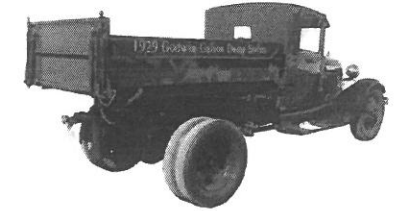
Galion-Godwin Truck Body Co. LLC.  
7415 Peabody-Kent Rd. Winesburg OH. 44690 P.O. Box 208  
(877) 450-4794 Fax (330) 359-5660

Galion-Godwin is an affiliate of  Dunn, N.C.

Galion-Godwin reserves the right under its Product Improvement Program to modify construction and/or design and furnish equipment when so altered without reference to illustration and/or specifications shown herein. All specifications subject to change without notice.

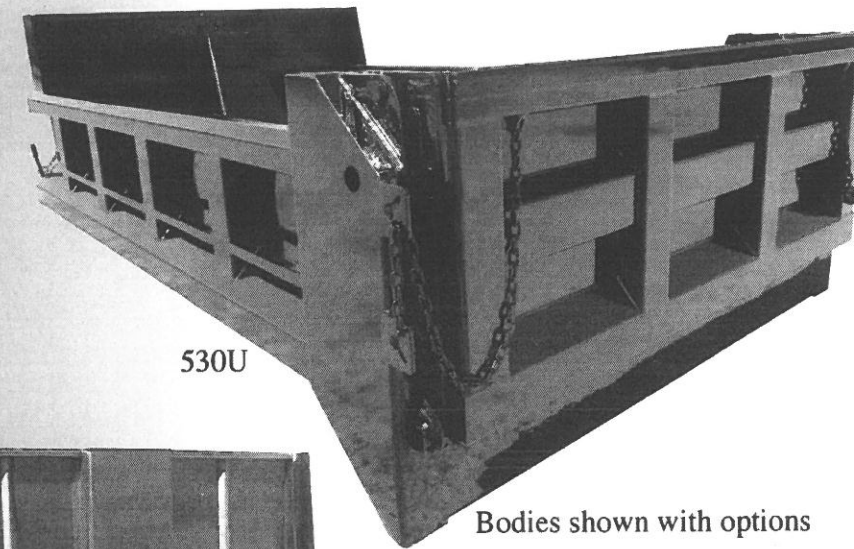
# 530U & 533U Dump Body

A continued tradition  
since the early 1900's



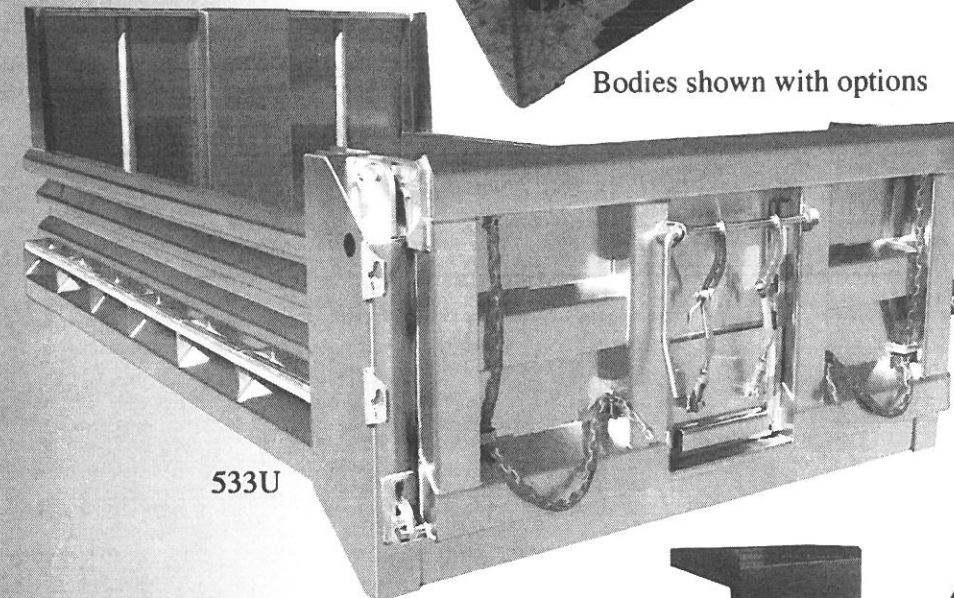
## Tough & Versatile

The Galion 530U's lighter crossmemberless construction makes it an excellent choice for over-the highway aggregate hauling. Ideal for construction, batching work, and spreading stone, sand, gravel and other aggregates. Designed for medium to heavy duty work, The 530U series bodies utilize high tensile steel throughout for best resistance to abrasion. The Galion 533U is a stainless copy of the 530U.



530U

Bodies shown with options



533U

A 23" cab protector is one of many options for the 530U & 533U



- Available in 12'- 17' lengths
- Material-shedding boxed top rails
- Crossmemberless understructure
- 3/16" AR 450 Hardox floor
- 6 or 9 panel tailgate
- Tarp-friendly upper gate hardware
- Full-depth rear corner posts

Visit Galion and all affiliated companies on the world wide web.  
[www.galiongodwin.com](http://www.galiongodwin.com)

**Galion**  
Galion-Godwin Truck Body Co. LLC