

# R511<sup>COMMERCIAL HD</sup>

## SUPER DUTY CHANGER

SERVICE TRUCK, BUS, SUPER SINGLE, AGRICULTURAL and LOCK RING.

The operating dimensions of the clamping unit and the head-tool carriage of this heavy-duty tire changer allows it to service a wide range of wheels. The controls enable users to regulate the speed of the tool holding carriage with lever type hydraulic distributions.

### FEATURES

- Cable control unit
- Quick locking manual rotation tool
- Patented VSG108A3 bead lever
- Tire paste lubricant and brush
- Ships with NEMA L6-20P plug

SERVICE TIRE DIAMETERS UP TO 64"

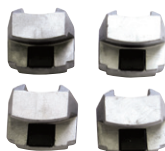
**TRUCK TIRES  
BUS TIRES  
SUPER SINGLE  
LOCK RING  
AGRICULTURAL**



**QUICK MANUAL  
TOOL ROTATION**



**HYDRAULIC CLAMPING**  
4" (90mm) Min. clamping  
13" (330mm) Min. height



**VSG108A2**  
Standard clamp  
protections for  
alloy rims / 4 x kit



**STANDARD BEAD LEVER  
VSG108A3 Tire Lever**



**B5308000**  
Long bead lifting lever

**Rotational control on  
portable wired stand**

### OPTIONAL ACCESSORIES



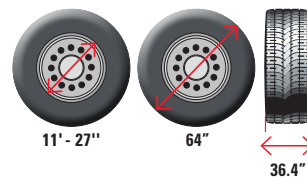
**VSG108A25 Clamp**  
for steel wheels

**VSG90A6 Clamp**  
for alloy wheels



**VSG108A34**  
Pneumatic bead  
pushing device

### TIRE DIMENSIONS



R511 services:



Optional equipment may be required

TECHNICAL DATA	R511
Chucking unit rotation motor	3 Hp / 2.2 kW
Hydraulic drive unit motor	1 Hp / .75 kW
Rim diameter	11" - 27"
Maximum tire diameter	64" (1640mm)
Maximum tire width	36.4" (925mm)
Chuck rotation speed (rev/min)	8
Power supply*	220v / 1Ø / 60 Hz



Lit# Rotary 511 Changer Cutsheet.2021.11

©2021 VEHICLE SERVICE GROUP™, Printed in U.S.A., All Rights Reserved. Unless otherwise indicated, ROTARY, VEHICLE SERVICE GROUP™, DOVER and all other trademarks are property of Dover Corporation and its affiliates.

Product specifications, part numbers, images and component descriptions are subject to change without notice or liability.

ROTARY WHEEL SERVICE EQUIPMENT now carries a 3 year warranty. See website for details.

Site Requirements: 220V / 1Ø / 60 Hz power supply