

UP TO 100+  
MILES FROM  
OUR EV!

A new and improved

**WESTWARD**  
Industries

## TASK SPECIFIC VEHICLES

Unsurpassed Maneuvering  
Increase Operator Performance  
Reduce Overall Footprint  
Increase Citation Capture Rate  
Reduce Fatigue



### The **GO-4**

#### MEET OUR NEWEST GO-4 GAS

Tried and true, our GO-4 Gas model has been helping municipalities perform parking enforcement since 1990. With a highly efficient 1.0 L motor and 4 speed transmission your operators will navigate dense city centres with ease...

### The New **GO-4 EV**

#### MEET THE NEW GO-4 EV – 100% ELECTRIC!

For all cities converting to a green footprint we introduce our GO-4 EV. A simple transition from our existing GO-4 platform. With the newest Lithium Ion technology expect to see up to 100+ miles of range. Simply charge and go for less than \$2.00 per charge in most States. An ideal fit for environmentally conscious agencies.



# WHY CONSIDER A GO-4?

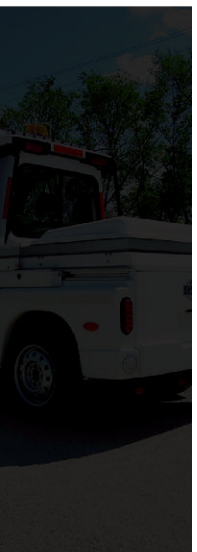
*TSV – Task Specific Vehicle*

## SUPERIOR NAVIGATION INCREASE CITATION CAPTURE RATE \$

At a mere 54 inches wide, the GO-4 occupies a very small footprint. It's compact size and 3 wheel platform is an ideal configuration for navigating tight locations, dense crowds, or simply minimizing impact on traffic. The outside turning radius is less than twenty feet.

Utilizing such a compact, nimble, and safe vehicle will allow operators to perform their tasks quicker and with less exhaustion. Allowing for Increased Capture Rates for your Department.

## COMPACT DESIGN



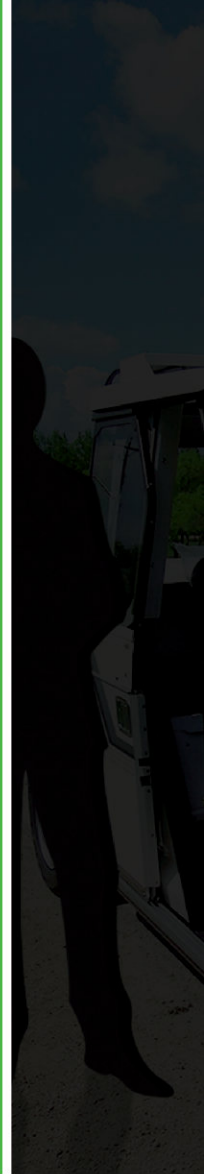
## TAILORED SIZE REDUCE OPERATOR FATIGUE

At 72 inches tall, the cab is extremely easy for an operator to enter and exit all day long.

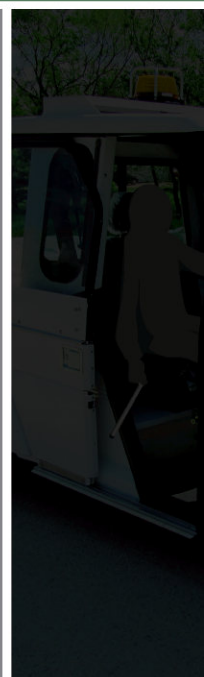
A considerable benefit for tasks that require frequent exits such as; parking citations, park & landscape work, utility meter checking, security patrolling, and many other industrial applications.

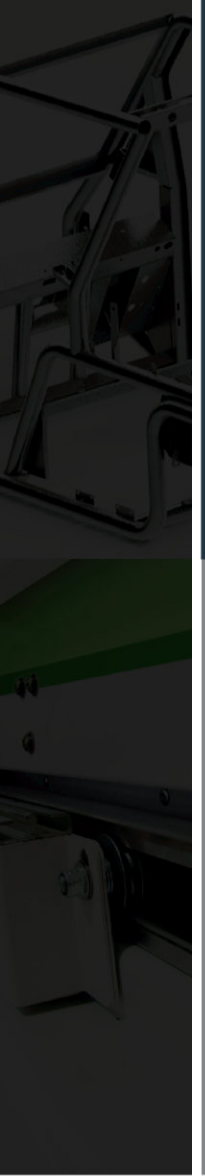
## TASK SPECIFIC SLIDING DOOR DESIGN

The GO-4 has a unique double sliding door design. The operator may easily exit the vehicle on either side of the cab as needed. Providing a great benefit to perform required tasks without having impact on traffic or putting the operator in danger. Tasks are also performed quicker as the operator no longer needs to walk around the vehicle each time they exit. An example might be applying a parking ticket on a window.



# DESIGN FOCUS





# SAFETY IS #1!

## SAFETY

A solid 2.5 inch steel roll bar chassis protects operators in the GO-4. This type of construction is typical in race cars, it is light weight yet very tough. This is a key consideration when looking at compact vehicles, as operators have the ability to easily navigate traffic, and do so at least 40 hours a week. We underline the importance of safety when selecting your compact utility vehicle.



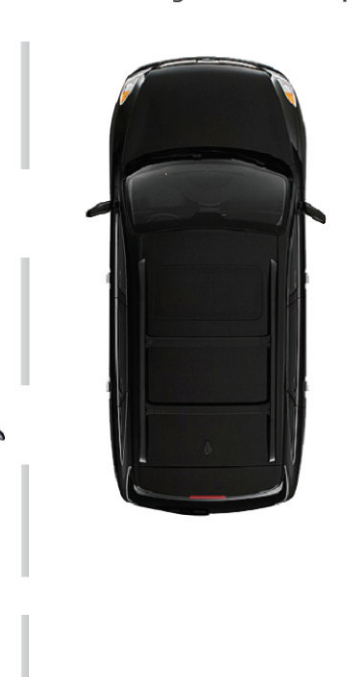
## DOOR MECHANICS

All manufactured materials used for the GO-4 are of high quality and built to last. Our sliding doors use components manufactured domestically in North America.

## SAFE OPERATOR DESIGN

The below illustration shows one of the GO-4 advantages. Traffic is not disturbed while the operator can easily exit from either side of the vehicle depending on traffic direction. Over head beacons can alert oncoming traffic of the parked GO-4.

# SAFETY FIRST



## DEPENDABLE FLEET SERVICE with LOW MAINTENANCE

The reliability of the GO-4 has been known to provide upwards of 9 years or more per vehicle in fleet service. We are proud of this fact considering many of our units operate 40-80 hours per week all year round.

The GO-4 has been engineered for STOP and GO driving. Our smaller engine and well built transmission handles such driving methods well. Much larger engines may incur premature wear and tear when challenged by very frequent STOP and GO driving at slower speeds.

Our fuel efficient engine offers low maintenance cost and excellent fuel economy providing great savings over the years in service. Our new GO-4EV is even more reliable considering it has so many less moving mechanical parts.

Our parts are now ONLINE for all authorized dealers.



**BUY NORTH AMERICAN DEPENDABILITY!**



# PROVEN SERVICE



\*THESE ARE ONLY SOME OF THE CURRENT APPLICATIONS FOR THE GO-4.



### PARCEL DELIVERY

Our van body addition has been used by customers such as NAPA aftermarket parts. This is an ideal vehicle for routes that require smaller package volumes. Our zero emissions EV is perfect for green fleets.

### PARKING ENFORCEMENT

Whether a large metropolitan city or a smaller town, the GO-4 is ideally suited for parking enforcement. In fact it was originally created with parking enforcement as a driving force behind its design.

Its narrow profile of only 54 inches allows it to fit in many tight locations, as well as double park next to parked cars without blocking a lane. The easy access of double sliding doors allows the operator to freely jump in and out of the vehicle from either side. The operator is not restricted to exiting on the drivers side which is typical with twin passenger vehicles. The doors can remain open while driving permitting the operator easy access while navigating. We have also outfitted units with LPR technology.



### SECURITY & LAW ENFORCEMENT

The unique look of the GO-4 lends itself well to all sorts of patrol. Malls as large as Mall of America in Minneapolis use our GO-4 for enforcing presence and security in the sprawling parking lots and adjacent streets.

NYC police department has used GO-4's for over 20 years to patrol events, protests, parades, and simply reach locations quicker in dense traffic. Also ideal for large sporting events or concerts. The GO-4 is street legal therefore driving on adjacent streets is not a problem.

## APPLICATIONS



## INDUSTRIAL EQUIPMENT

Our GO-4 flat bed has been outfitted for many various applications. To simply name a couple, street line painting and insect repellent machinery. The industrial equipment is simply fastened over the rear bed. Fuel economy is upwards of 45 MPG with the gas version, leaving large savings for agencies driving many miles on a given day. The slim design of the vehicle takes up much less space than traditional vehicles. Call us to find out which application would work for you?



## UNIVERSITIES & COLLEGE CAMPUSES

For over 20 years GO-4's and now GO-4 EV's have been ideal vehicles for Universities and College campuses. Campuses have purchased GO-4's for a broad variety of reasons; parking citations, security presence, transporting landscaping tools, moving parcels and more.

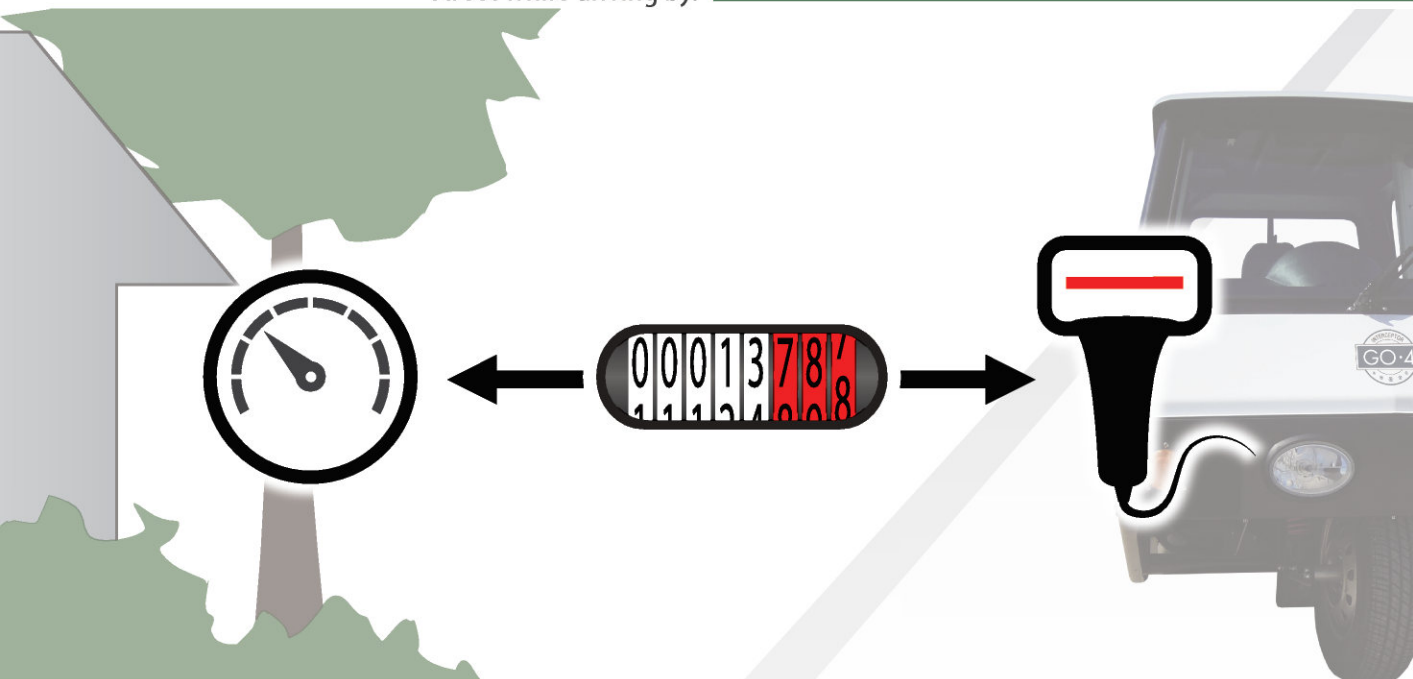
The GO-4 EV is 100% electric and fits the green mandate of many campuses. It is also street legal which provides an advantage if travel is needed on city streets.



## METER READING

Many of today's meter readers use hand-held devices allowing them to obtain a reading without going inside the property. The meters installed outside of the home can be scanned from the street while driving by.

# APPLICATIONS





## VAN BODY

Need an efficient transporter of goods? Consider our Van Body addition. Made of high quality aluminum, heavy duty steel hinges and door lock. The GO-4 Van body is ideal for delivery of small parcels, packages, envelopes, or even equipment. Due to its compact size, the GO-4 is well suited to operate in dense locations, or when fuel and operational efficiencies are a concern. Consider our GO-4 EV van Body for Zero emissions commuting. Please inquire for specific cargo loads.



## FLAT BED

As reviewed in our Applications section, the GO-4 Flat bed is an ideal fit for industrial tasks requiring a more compact, efficient vehicle that can operate all day in a stop and go environment.

The GO-4 also works well for landscaping work in parks and campuses. Our vehicle is street legal and may commute to other areas via city streets as needed. Many other vehicles for this industry may not be permitted on city streets, they may also be restricted to low speed regulations, increasing commute times. Optional walls and gate available.

## LICENSE PLATE RECOGNITION (LPR)

The GO-4 has previously been outfitted with LPR upon request. We work in conjunction with some of the best companies on the market. With each plate read, user-friendly in-vehicle software shows plate and vehicle images, time stamps, and more data as required.

# OTHER MODELS



License Plate Recognition (LPR)



**SAVE  
Your Fleet  
\$\$**

**GO-4 GAS ECONOMICS vs  
THE NATIONAL AVERAGE**



1.0L, 3 cyl, Automatic

**GO-4 EV ECONOMICS**



96V Lithium Ion 20.2kw

MILES PER GALLON AVERAGE	REGULAR GASOLINE <b>Up to 45</b>	UP to 100+	MILES PER CHARGE
<b>SAVE</b> The average 2013 vehicle gets 23 MPG	<b>YOU SAVE \$4,800!!</b> In fuel costs over 5 years compared to the average new vehicle	<b>YOU SAVE \$9700!!</b> In fuel costs over 5 years to the average new gas vehicle	<b>SAVE</b> Compared to average 23 MPG vehicle
ANNUAL FUEL COST **	<b>\$1025</b>	<b>\$342</b>	ANNUAL CHARGE COST AVERAGE
COST TO DRIVE 25 MILES	<b>\$1.71</b>	<b>\$0.56</b>	COST TO DRIVE 25 MILES AVERAGE
FUEL TO DRIVE 25 MILES	<b>0.55 Gallons</b>	<b>Up to 3000 charges per battery at 80% DOD+++</b>	CHARGES PER BATTERY
COST TO FILL THE TANK AVERAGE	<b>\$28</b>	<b>\$2.09</b>	COST TO CHARGE AVERAGE
MILES ON TANK AVERAGE	<b>Up to 405 Miles</b>	<b>5-7 hours with 220V 10-14 hours with 110V</b>	CHARGE
TANK SIZE	<b>9 Gallons</b>	<b>20.2 KW</b>	KW SIZE

# GO-4 ECONOMICS

\*information on national averages is from <http://www.fueleconomy.gov> US department of energy. 2013 models as of August 2013 Fuel Costs \*\* 15,000 annual miles at current national fuel prices, August 2013. MPG varies on driving behavior and conditions, above claims are averages. Each operator may experience different fuel economies.

MPG on the GO-4 is confirmed by EPA testing. It has also been extensively tested using various methods at our factory; depending on conditions we have experienced MPG between 37-53 MPG (average 45).

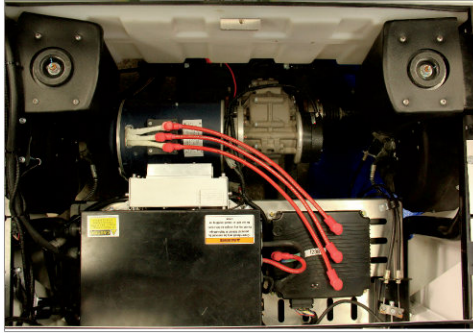
We use our EPA MPG for this document.

+Range on EV's can greatly change depending on many factors such as weather, terrain, driving habits, heat or AC utilization.

This average range can vary from 50-100 miles

++Average electricity costs from March 2014, [www.eia.gov/electricity/monthly](http://www.eia.gov/electricity/monthly)

+++DOD is depth of discharge. Battery manufacturers recommend not frequently depleting a charge below 20%.



The GO-4 EV is powered by a 55 peak HP (41kW) 3 phase AC motor. 96 Volt (20.2KW) Lithium Ion Battery pack. 110 or 220 V charging.



LED lighting is now a standard feature on the GO-4, for all exterior lighting other than the head lights. Lighting is also positioned up high on the rear cab to easily notify vehicles of frequent stopping. Additional beacons can be added.



Rear trunk with hinged and locking lid provide extra storage space.



The GO-4 can easily be outfitted with an AM/FM radio with CD player or Bluetooth, with space for two 4x4 speakers can be fitted into the ceiling cab.



A comfortable interior offers an adjustable sliding chair, tilt steering, excellent viewing conditions, and optional cup holder arm rest.



EV - Standard fully digital center dash display. Main displays are speed, AMPS, battery charge, Volts, hour meter, and odometer.

## ADDITIONAL PRODUCT IMAGES



The GO-4 is powered by the latest and most efficient Hyundai / Kia power plant. 3 cylinder, 66 horsepower, 4 speed automatic transmission.



Optional AC is available, as well as a lateral thrust alarm which notifies the driver if taking a corner too quick and tight.



Additional nerf bar option for reducing impact from any potential dents and collisions.

**MOTOR**

96 Volt, 55 peak HP(41KW)  
3 phase AC motor

**BATTERY**

96 volt, Lithium Ion Battery pack

**TRANSMISSION**

Single speed transaxle  
Forward/Reverse switch on dash

**DIMENSIONS**

72" Overall height with cab  
120" Overall length  
54" Overall width  
236" Outside turning radius  
128" Inside turning radius  
83" Wheelbase

**BRAKING**

Hydraulic disc brakes on all three wheels  
with dual master cylinder  
Parking - Hydraulic over mechanical  
Regenerative Braking

**ELECTRICAL SYSTEM**

J1772 charge inlet. 110V or 220V charging  
Onboard 3.3 kw Charger.  
Charges in 5-7 hours with 220V, 10-14 hours with 110V.  
Lights - LED headlights  
DOT Approved LED Stop / Tail and Turn lights  
DOT Approved High Visibility Stop and Turn lights  
Gauges - LCD Digital display.  
Speed, odometer, hour meter  
Warning message, and battery level  
Wiring - Pre wired for Radio and Municipal lighting options

**SPEED**

Electronically governed at 40 or 45 mph

**COLOR**

White with all black frame and accents (standard)

**RANGE**

Up to 100 miles in ideal conditions.  
See below for more detailed information.

**SUSPENSION**

Front - Leading link suspension  
Polyurethane Isolation system  
Rear - Independent McPherson strut

**CLIMATE CONTROL**

Electric ceramic heater unit  
Air Conditioning optional

**STEERING**

Adjustable tilt steering wheel  
with center mounted horn

**TIRES**

165/60 14" Low-rolling resistance all-season radials

**FEATURES**

3-wheel platform with "Tube guard" tubular steel frame  
White Aluminum and Plastic body panels  
Storage box with lockable cover  
Sliding metal doors  
with independently sliding windows  
Steel front and rear bumpers  
3 point shoulder harness seat belt  
Outside rear view mirrors  
Electric windshield wiper with  
intermittent control and windshield washer  
Dome light, Floor mat  
12V DC accessory port for phone, radio, etc.  
LTA (lateral thrust alarm) safety device  
Optional rear view back up camera

**SEAT**

One passenger adjustable forwards and backwards,  
with adjustable back and headrest, 3-point seat belts

**WEIGHT CAPACITY**

Vehicle weight, 1700 lbs  
GVWR, 2300 lbs  
Rated capacity, 600 lbs including operator

**WARRANTY**

One year full warranty, inquire for details  
Inquire for full offering - **OPTIONS**

# GO-4 EV SPECIFICATIONS

## TYPICAL RANGE SCENARIOS

The chart below provides estimates for typical ranges in a variety of driving scenarios:

CONDITION	RANGE
Manufacturer's estimated cruising range as measured by the test procedure	up to 100+ miles
Careful city driving, no heat or air conditioning. Mild outside temperatures. Normal terrain	up to 100+ miles
Summer driving with AC	55 - 75 miles
Winter driving (about 32oF) with heat	55 - 75 miles
Extreme terrain, with heat or AC	45 - 70 miles

Charges on 110V or 220V, uses a standard J1772 electric vehicle plug. 220V charges in 5-7 hours while 110V can take 10-14 hours. As an EV user, you can have a great influence the actual range achieved. Smooth acceleration and minimized use of accessory loads, such as the heater, will greatly increase your range between battery charges. The battery is rated at 2500 charges at an 80% discharge.

### ENGINE

66 h.p., liquid cooled, 3-cylinder, overhead cam  
4-cycle, electronically fuel injected

### TRANSMISSION

4-speed automatic  
(automotive transaxle with electronically controlled shift)

### DIMENSIONS

72" Overall height with cab  
120" Overall length  
54" Overall width  
236" Outside turning radius  
128" Inside turning radius  
83" Wheelbase

### BRAKING

Hydraulic disc brakes on all three wheels  
with dual circuit master cylinder  
Parking - Hydraulic over mechanical

### ELECTRICAL SYSTEM

Charging – Heavy Duty automotive alternator  
Lights – LED headlights  
DOT approved LED Stop/Tail/and Turn lights  
DOT approved High Visibility Stop and Turn lights  
Starting – 12-volt starting motor.  
Interlock prevents starter from operating  
unless shift lever is in park or neutral.  
Gauges – Speedometer, fuel level, hour meter  
Indicator lights – Oil pressure warning,  
three stage water temperature light  
(blue / below running temp, red/ above running temp,  
off / normal running temp)  
Charging system, Low fuel.  
Wiring – automotive grade wiring harness  
with abrasion resistant protective loom.  
Pre wired for Radio and municipal lighting options.

### WARRANTY

One year full warranty. Please inquire for details  
Inquire for full offering - **OPTIONS**

### SUSPENSION

Front - Leading link suspension  
Polyurethane Isolation system  
Rear - Independent McPherson strut

### CLIMATE CONTROL

Liquid core 20,000 BTU heater/defroster  
Air Conditioning optional

### STEERING

Adjustable tilt steering wheel  
with center mounted horn

### TIRES

165/60 14" all-season radials

### FEATURES

3-wheel platform with "Tube guard" tubular steel frame  
Aluminum and Plastic body panels  
Storage box with lockable cover  
Sliding metal doors  
with independently sliding windows  
Steel front and rear bumpers  
3 point shoulder harness seat belt  
Outside rear view mirrors  
Electric windshield wiper with  
intermittent control and windshield washer  
Dome light, Floor mat  
LTA (lateral thrust alarm) Safety Device  
12V DC accessory port for phone, radio, etc.

### SEAT

One passenger adjustable forwards and backwards,  
with adjustable back and headrest. 3-point seat belts.

### FUEL TANK AND FUEL MILEAGE

9 US gallons. Up to 45 mpg. Inquire for details

### WEIGHT CAPACITY

Vehicle weight, 1550 lbs. GVWR, 2150 lbs.  
Rated capacity, 600 lbs including operator

### COLOR

White with all black frame and accents (standard)

### SPEED

Electronically governed at 40 or 45 mph.

# GO-4 GAS SPECIFICATIONS

Specifications are subject to change without notice. These vehicles comply with the U.S. D.O.T. vehicle safety standards "motorcycles", as well as meet E.P.A. and C.A.R.B. standards.  
Graphics illustrated on the vehicle are strictly for the purpose of this brochure. Municipalities typically outfit the vehicles with proprietary graphics.

### WESTWARD INDUSTRIES

TEL: 204 594 4100

FAX: 204 231 2607

EMAIL: [sales@westwardindustries.com](mailto:sales@westwardindustries.com)

75 Archibald Street

Winnipeg, MB, Canada

R2J 0V7

[www.westwardindustries.com](http://www.westwardindustries.com)

Published 2018 - copyrights by Westward Industries Ltd.