

COMMONWEALTH EQUIPMENT

MATERIAL PROCESSING

NCSA Heavy Equipment

Contract 24-08-0421

Item Number: 52

Model Number: S250

Group: Asphalt Maintenance and Recycling Equipment

Build Number: 2D

Make: McCloskey International

MSRP: \$610,403.00

Model: Deck Screen

Discount 6%: (\$36,624.18)

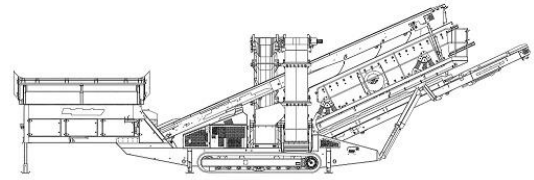
Total Net Price: \$573,778.82

Price Does Not Include Freight

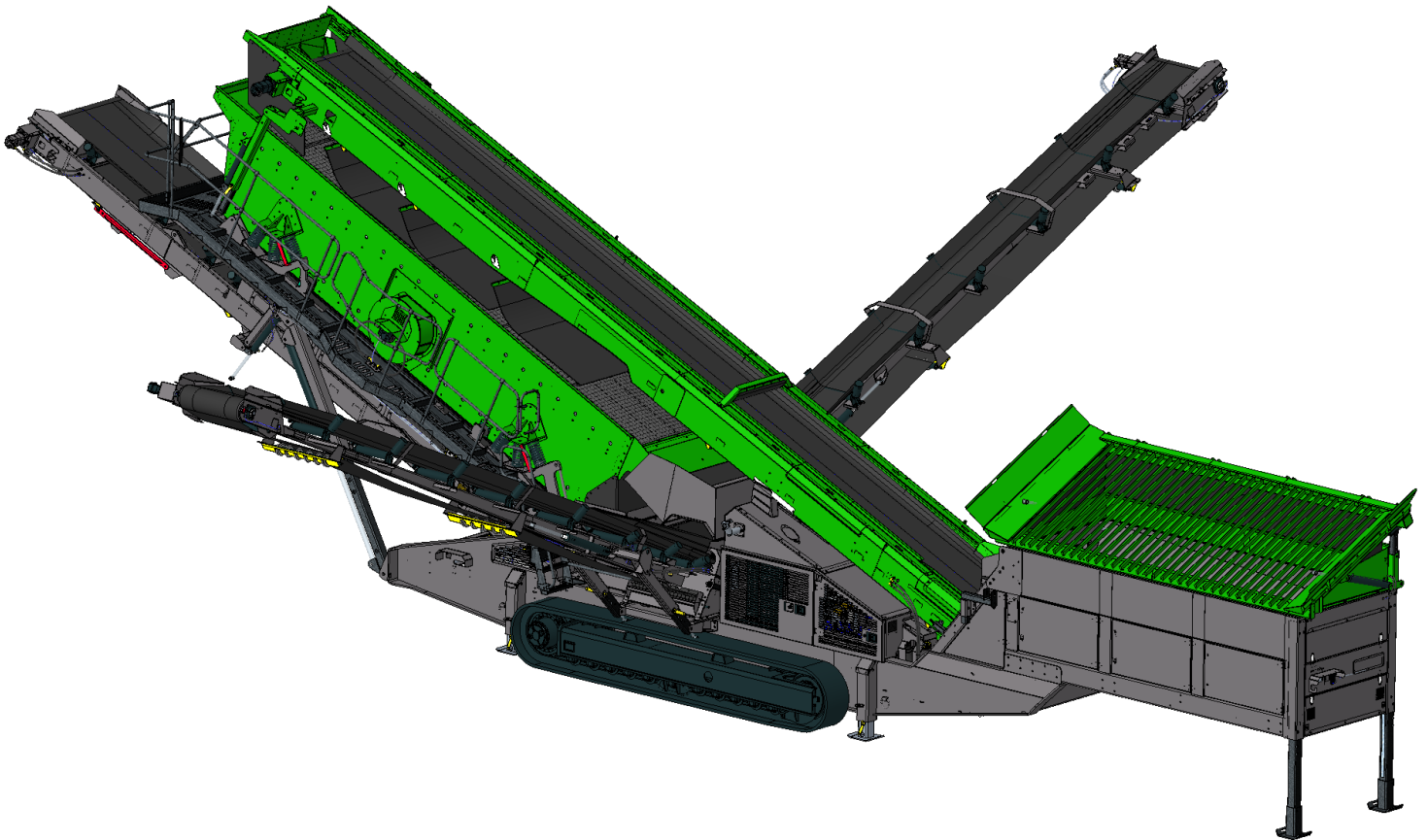
Commonwealth Equipment * 36 Hazleton St * Ashley PA 18706

Phone: 877-217-4474 * commonwealthequipment.com

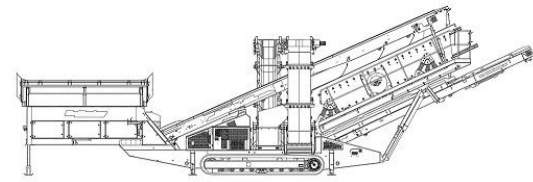
MST03282023



SPECIFICATIONS



McCloskey ***S250 2 DECK***



DESCRIPTION

Heavy duty tracked mounted mobile screener with following features:

- 22x6 heavy duty high energy 2 bearing 2 deck screenbox.
- 225Hp CAT engine Tier 3 or Dual cert, 218Hp Volvo Dual Cert engine.
- Track mobile.
- Integrated hydraulic folding stockpiling conveyors.
- Remote control tipping grid
- Fast on-site setup time – 15 minutes typically.

DIMENSIONS AND WEIGHTS

| | |
|--|----------------------------|
| Length – transport 15ft hopper | 19,55m (64' – 1.5") |
| Length – transport 12ft hopper | 18,63m (61' – 1.5") |
| Width – transport (800mm aux conveyor) | 3.3m (10'10") |
| Height - transport | 3.6m (11' – 10") |
| Weight – | 38000 Kgs (83776lbs) (est) |

CAPACITIES

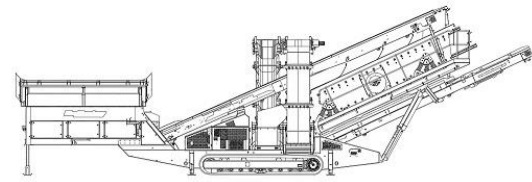
| | |
|-------------------------|---|
| Diesel tank capacity | 485L (128 US gal) |
| Hydraulic tank capacity | 800 L (211 US gal) |
| Capacity – 12ft hopper | 8m ³ (10.5yd ³) |
| Capacity – 15ft hopper | 10m ³ (13.1yd ³) |

FEED CONVEYOR

| | |
|------------------|----------------------|
| Belt width | 1200mm (48") |
| Belt spec | Plain 500/3 6+3 |
| Drive drum dia. | 335mm (13.1") |
| Tail drum dia. | 320mm (12.5") |
| Gearbox | Bonfiglioli 805 W2 |
| Motor | Danfoss OMSS 160 |
| Flow rate | 79.5 Lpm (21 US gpm) |
| Adjustable speed | YES |
| Maximum speed | 18.9 rpm |

MAIN CONVEYOR

| | |
|------------------|------------------------|
| Belt width | 1200mm (48") |
| Belt spec | Chevron 400/3 6+1.5 |
| Option | Plain belt |
| Drive drum dia. | 285mm (11.2") |
| Tail drum dia. | 270mm (10.6") |
| Motor | Danfoss OMV800 |
| Flow rate | 100.5Lpm (26.5 US gpm) |
| Adjustable speed | OPTION |
| Maximum speed | 163rpm |



TAIL CONVEYOR

| | |
|------------------|----------------------|
| Stockpile height | 4992mm (16' – 4.5") |
| Belt width | 1400mm (55") |
| Belt spec | Plain - 400/2 6+1.5 |
| Drive drum dia. | 285.5mm (11.2") |
| Tail drum dia. | 270mm (10.6") |
| Motor | Danfoss OMV500 |
| Flow rate | 79.5 Lpm (21 US gpm) |
| Adjustable speed | YES |
| Maximum speed | 108 rpm |

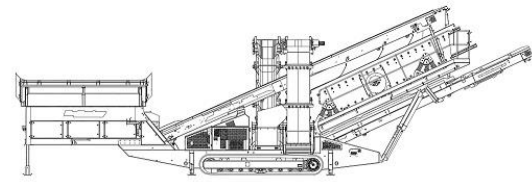
SIDE CONVEYORS

| | |
|------------------|------------------------------|
| Stockpile height | 5398mm (17' – 8.5") |
| Belt width | 900mm (36") |
| Belt spec | Chevron – 400/3 6+1.5 |
| Drive drum dia. | 285.5mm (11.2") |
| Tail drum dia. | 270mm (10.6") |
| Motor | OMT500 |
| Flow rate | Up to 64.8 Lpm (17.1 US gpm) |
| Maximum speed | Up to 136 rpm |
| Angle adjustable | YES |

SCREENBOX 2 OPTIONS CAN BE SIDE TENSIONED OR END TENSION

BOTTOM DECK

| | |
|--------------------------------------|--|
| Dimensions – top deck | 6710mm x 1830mm (22' x 6') |
| Dimensions – bottom deck | 6100mm x 1830mm (20' x 6') |
| Bearing type 2 deck | NSK/Timken 150mm bore |
| Screens – top deck | 6' x 4' side tension 5 off, 6' x 2' side tension 1 off |
| Side tension bottom deck | 6' x 4' side tension 5 off |
| End tension bottom deck | 6' x 6'8" end tension 3 off |
| Tensioning - top deck | Quick release pin and wedge |
| Tensioning - bottom deck end tension | Curved tension bar and adjuster |
| Screen angle | 18 to 25 degrees |
| Screen motor | Hydreco MCC2208 58.9cc twin drive |
| Drive system | Direct drive with HRC230 couplings |
| Flow rate | 142.6Lpm (37.6 US gpm) |
| Speed adjustable | YES – pressure compensated FCV |
| Screen stroke adjustable | 610mm |
| Screen shaft speed | 970 +/-10rpm |
| Screen 'g' force | 5.27+/-10g |



COUPLING CIRCUIT

| | |
|----------|------------------------|
| Flow | 100.5Lpm (26.5 US gpm) |
| Pressure | 220 Bar (3200 psi) |

POWERUNIT AND HYDRAULICS

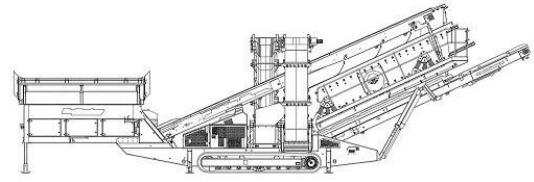
| | |
|---------------------------|--------------------------------|
| Engine Tier 3 | CAT C7.1 225Hp |
| Engine Tier 4F | CAT C7.1 225Hp, Volvo D5 218Hp |
| Engine speed | 1800 rpm |
| Flywheel Pump 1 | Turolla 61/34/17 @ 2338rpm |
| Flywheel Pump 2 | Turolla 43/43/34 @ 2338rpm |
| Flywheel splitter gearbox | Twin Disc AM220 1 : 0.77 ratio |
| PTO Pump 3 | Turolla 36/36 @ 1800rpm |
| Total system flow (max) | 672 Lpm (117.5 US Gpm) |
| Hydraulic tank capacity | 800 L (211 US Gals) |
| Hydraulic tank ratio | 1.2 : 1 |
| Hydraulic Oil cooler | YES |

ELECTRICS

| | |
|---------------------------------|---|
| Emergency stops | 6 off, 1 feeder, 2 powerunit, 2 chassis, 1 walkway |
| Start Siren | YES – 10 sec delay |
| Control panel | Tedd Engineering / IFM |
| Engine shutdowns: | Low oil pressure High water temp Air filter blockage (selectable) Fuel contamination Low hydraulic tank level High hydraulic oil temperature |
| Engine room light | YES |
| Remote tipping grid | YES – 2 functions timed |
| Radio control tracks and feeder | STANDARD |
| Pendant track control | YES – plugged in at feeder end |

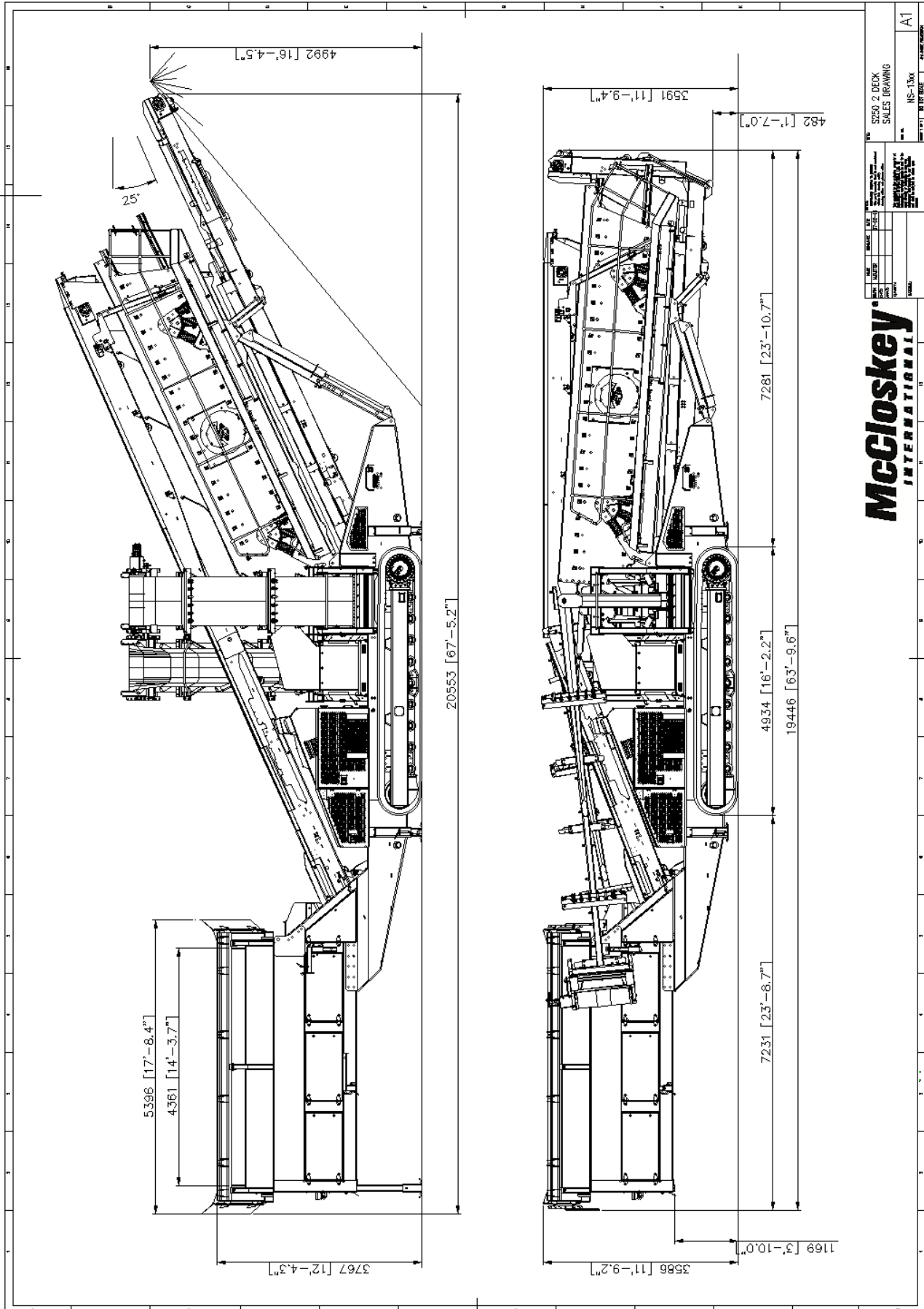
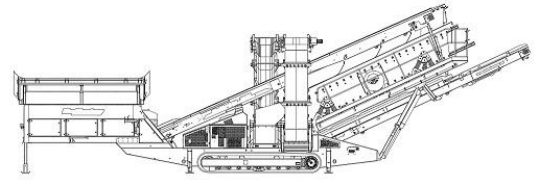
TRACKS

| | |
|-----------------------|--|
| Width | 400mm (15.7") |
| Length | 3800mm (12' – 5.5") crs |
| Height | 817mm (32") |
| Gearbox | Bonfiglioli 711 (or equivalent) |
| Ratio | 144:1 |
| Motor | Rexroth A2FE90 |
| Speed max | 1.50 Kph (0.93 Mph) |
| Flow rate | 152 Lpm (40.2 US gpm) |
| Multiple speeds | Three speed system selectable at control panel with smooth start / stop. |
| Attachment to chassis | Bolt On for quick change |



SAFETY FEATURES

- External belt alignment points
- External grease points
- Engine safety shutdown systems
- Full safety guarding for nip points



**McCloskey®
INTERNATIONAL**

S250 2 DECK
SALES DRAWING
HS-1300

A1