



## **NCSA Heavy Equipment**

**Contract 24-08-0421**

**Item Number: 51**

**Model Number: S190**

**Group: Asphalt Maintenance and Recycling Equipment**

**Build Number: 2D**

**Make: McCloskey International**

**MSRP: \$435,617.00**

**Model: Deck Screen**

**Discount 6%: (\$26,137.02)**

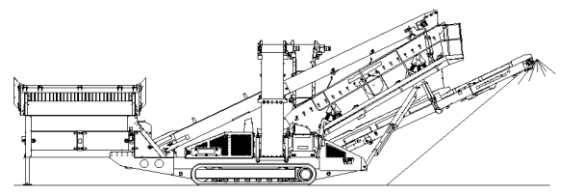
**Total Net Price: \$409,479.98**

**Price Does Not Include Freight**

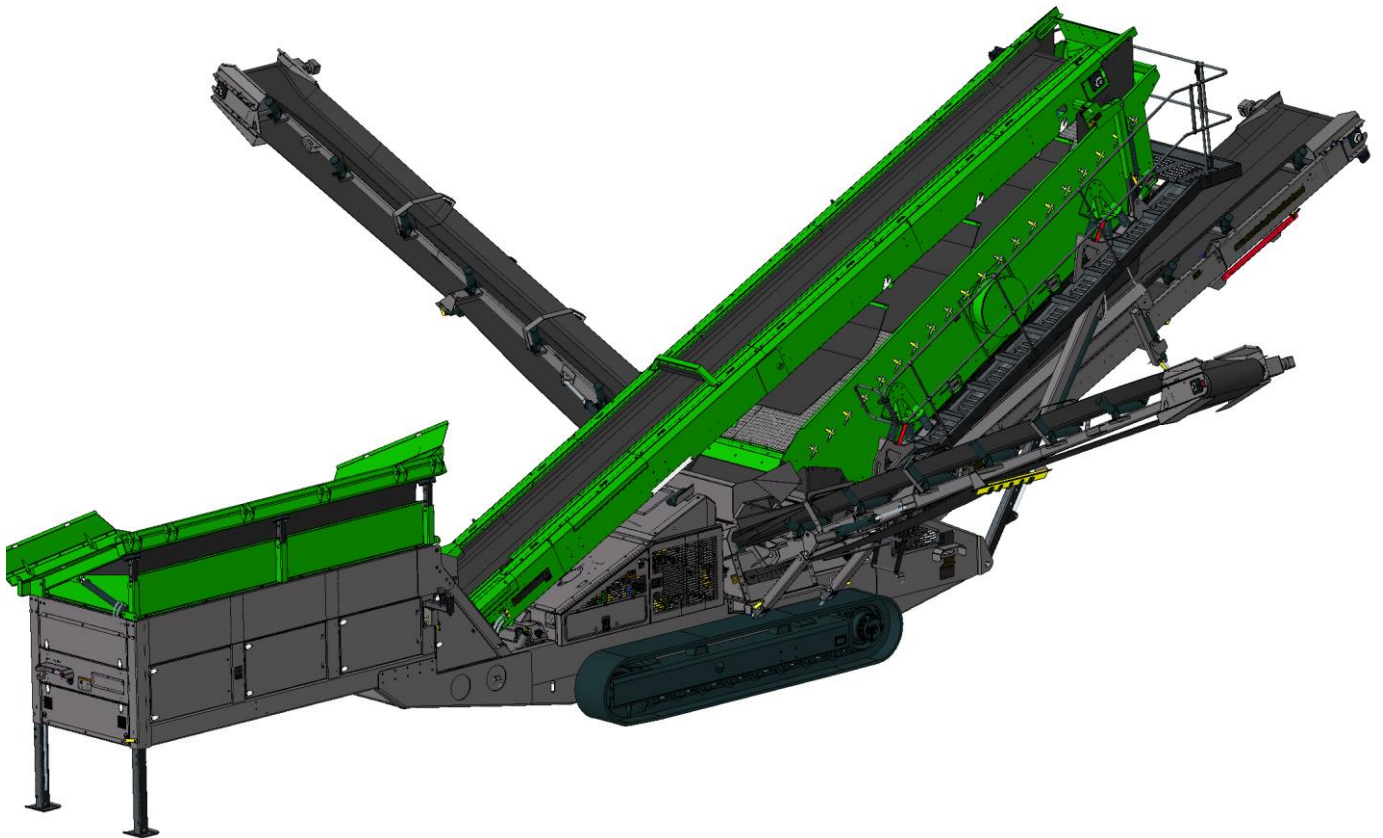
**Commonwealth Equipment \* 36 Hazleton St \* Ashley PA 18706**

**Phone: 877-217-4474 \* [commonwealthequipment.com](http://commonwealthequipment.com)**

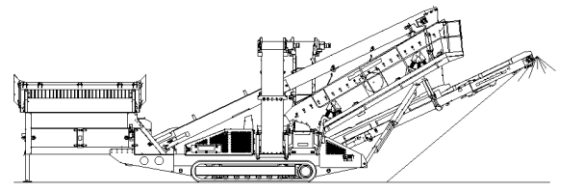
MST03282023



# ***SPECIFICATIONS***



## ***McCloskey*** ***S190***

**DESCRIPTION**

Heavy duty mobile screener with following features:

- 20x5 heavy duty high energy 2 bearing screenbox.
- 130Hp Diesel at engine.
- Track or wheel mobile.
- Integrated hydraulic folding stockpiling conveyors.
- Remote control tipping grid.
- Fast on-site setup time – 10 minutes.

**DIMENSIONS AND WEIGHTS**

Length - transport 15ft hopper	18.45 (60' - 6")
Length - transport 12ft hopper	17.5m (57' - 6")
(Please see last page)	
Width - transport	2.9m (9' - 6")
Height - transport track	3.4m (11' - 2")
Height - transport wheel	3.68m (12' - 1")
Weight - track	36,430 Kgs (80,314lbs)
Weight - wheel	32,000 Kgs (70,548lbs)

**CAPACITIES**

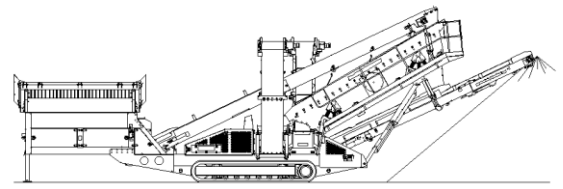
Diesel tank capacity	399 L (105 US gal)
Hydraulic tank capacity	630 L (166 US Gals)
Capacity - 12ft hopper	8.01 m <sup>3</sup> (10.48 yd <sup>3</sup> )
Capacity - 15ft hopper (Std)	10.01 m <sup>3</sup> (13.09 yd <sup>3</sup> )

**FEED CONVEYOR**

Belt width	1200mm (48")
Belt spec	Plain 500/3 6+3
Drive drum dia.	335mm (13.1")
Tail drum dia.	320mm (12.5")
Gearbox	Bonfig 805 W2
Gearbox ratio	24.2
Gearbox torque	7000Nm cont, 12500Nm max
Motor	160cc motor
Flow rate	72.6 Lpm (19.2 US gpm)
Adjustable speed	YES
Maximum speed	18.75 rpm

**MAIN CONVEYOR**

Belt width	1050mm (42")
Belt spec	Chevron 400/3 6+1.5
Option	Plain belt
Drive drum dia.	285mm (11.2")
Tail drum dia.	270mm (10.6")
Motor	800 cc motor
Flow rate	101.2 Lpm (26.7 US gpm)
Adjustable speed	OPTION
Maximum speed	126.5 rpm

**TAIL CONVEYOR**

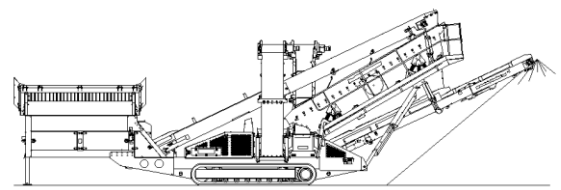
Stockpile height - track model	4638mm (15' - 3")
Stockpile height - wheel model	4905mm (16' - 1")
Belt width	1200mm (48")
Belt spec	Plain - 400/2 6+1.5
Drive drum dia.	285mm (11.2")
Tail drum dia.	270mm (10.6")
Motor	800 cc motor
Flow rate	101.2 Lpm (26.2 US gpm)
Maximum speed	126.5 rpm

**SIDE CONVEYOR**

Stockpile height - track model	5100mm (16' - 9")
Stockpile height - wheel model	5370mm (17' - 7")
Belt width	800mm (32")
Belt spec	Chevron - 400/3 6+1.5
Drive drum dia.	285mm (11.2")
Tail drum dia.	270mm (10.6")
Motor	400 cc motor
Flow rate	50.6 Lpm (13.4 US gpm)
Adjustable speed	YES
Maximum speed	126.5 rpm
Drum centers	10275mm (33' - 8")

**SCREENBOX**

Dimensions - top deck	6100mm x 1524mm (20' x 5')
Dimensions - bottom deck	5490mm x 1524mm (18' x 5')
Bearing type	NSK 110mm bore
Screens - top deck	5' x 4' side tension - 5 off
Screens - bottom deck	5' x 6' end tension - 3 off
Tensioning - top deck	Quick release pin and wedge
Tensioning - bottom deck	Curved tension bar and adjuster
Screen angle	20 to 30 deg
Screen motor	DBH MCC2213 (85.7cc/rev)
Drive system	Direct drive with HRC180 coupling
Hydraulic flowrate	101.2 Lpm (26.7 US gpm)
Speed adjustable	YES - Pressure compensated FCV
Screen stroke adjustable	6 - 10mm maximum
Screen shaft speed	1130 - 950 rpm
Screen 'g' force	4.29 - 5.05 g



### POWERUNIT AND HYDRAULICS

Engine	CAT C4.4(Teir 3, Tier 4F & Stage 5) Deutz 3.6 (Stage 5)
Engine speed	1800 rpm
Flywheel Pump 1	Cast iron 5056,5056,5041
LH PTO Pump 2	Cast iron 5029,5029,2SPA23
Total system flow	419 L (110.7 US Gpm)
Hydraulic tank capacity	630 L (166 US Gals)
Hydraulic tank ratio	1.51 : 1
Hydraulic Oil cooler	YES

### ELECTRIC HYDRAULIC POWERUNIT (with wheeled option only)

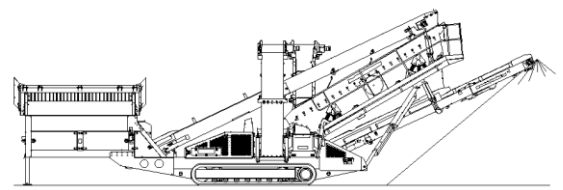
2 Electric motors	37KW (50 Hp)
Frequency	50hz or 60hz
Voltage	3 phase 415V or customer specific
Control panel can be supplied upon request	

### ELECTRICS

Emergency stops	6 off, 1 feeder, 2 powerunit RH&LH, 2 chassis front RH&LH, 1 Walkway
Chassis cabling	Armored cable
Start Siren	YES - 10 sec delay
Engine shutdowns:	Low oil pressure High water temp Air filter blockage (selectable) Fuel contamination Low hydraulic tank level
Engine room light	YES
Remote tipping grid	YES - 2 function timed
Radio control tracks	Standard
Pendant track control	Standard as backup

### TRACKS

Width	500mm (19.7")
Length	3800mm (12' - 6") crs
Height	798mm (31.4")
Gearbox	Bonfiglioli 709
Ratio	148:1
Motor	Rexroth 90
Speed max	1.14 Kph (0.71 Mph)
Flow rate	101.2 Lpm (26.7 US gpm)
Attachment to chassis	Bolt On for quick change

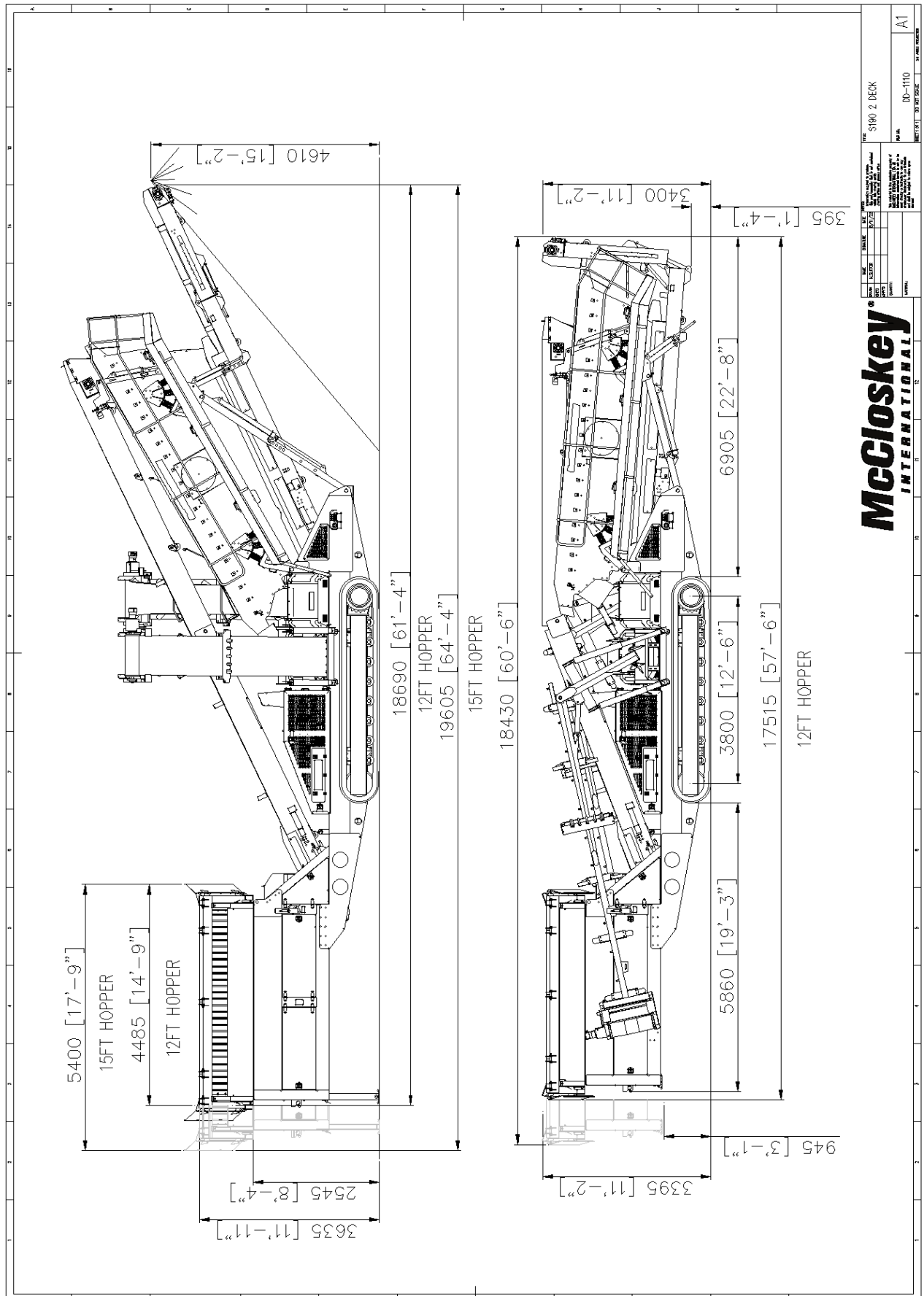
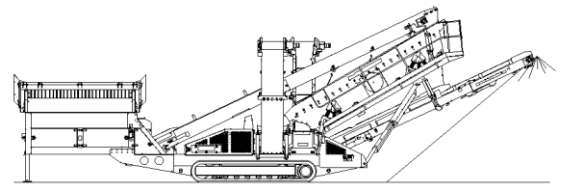


### **WHEELS**

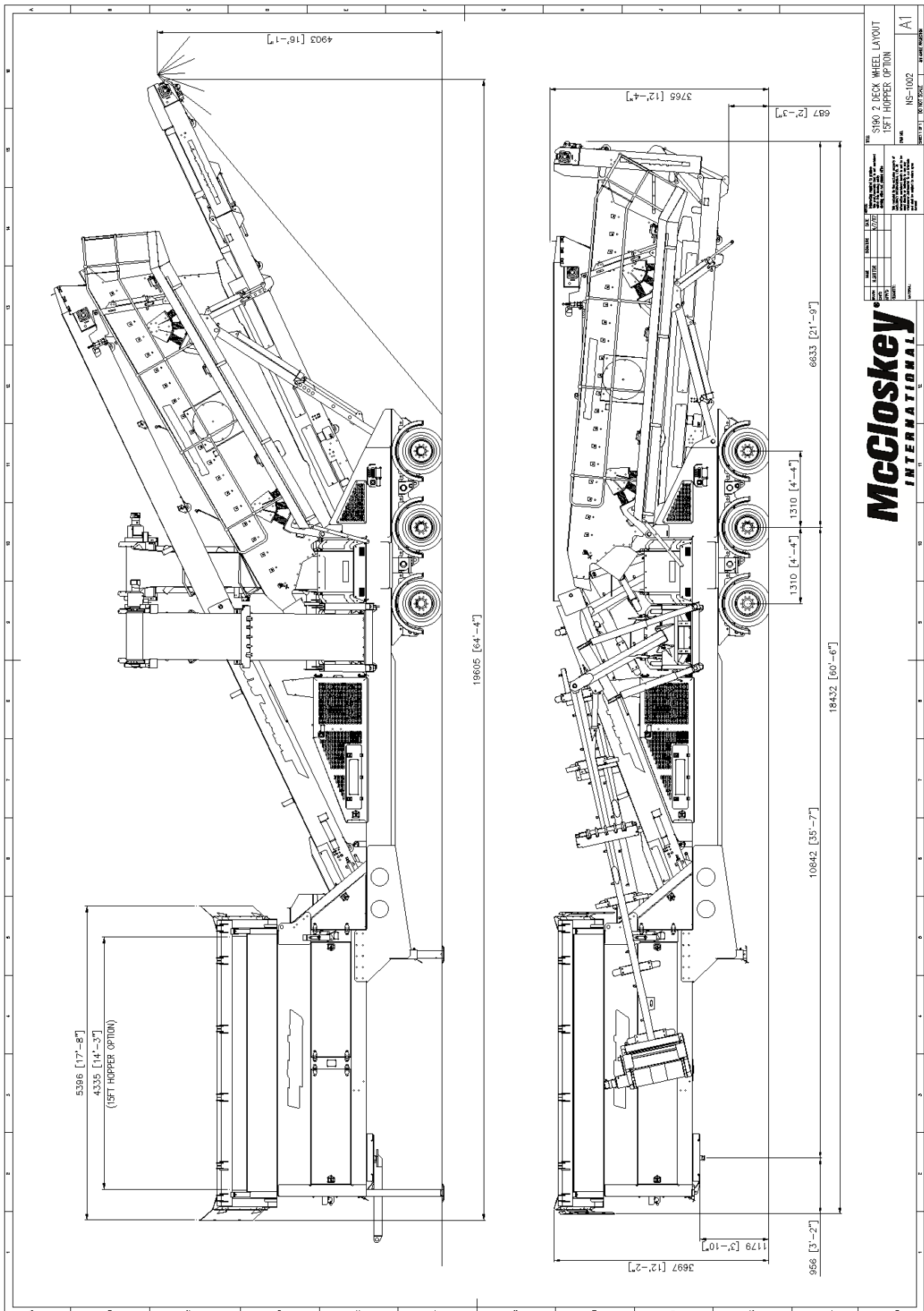
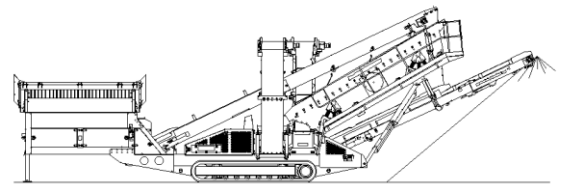
Width	2900mm (9' - 6")
Axle centers	1360mm (4' - 6")
Wheels	235/75/R17.5 dual
Axles	3 off
Brakes	YES
Spring suspension	YES
Mudguards	YES
Handbrake	YES
ABS	YES

### **SAFETY FEATURES**

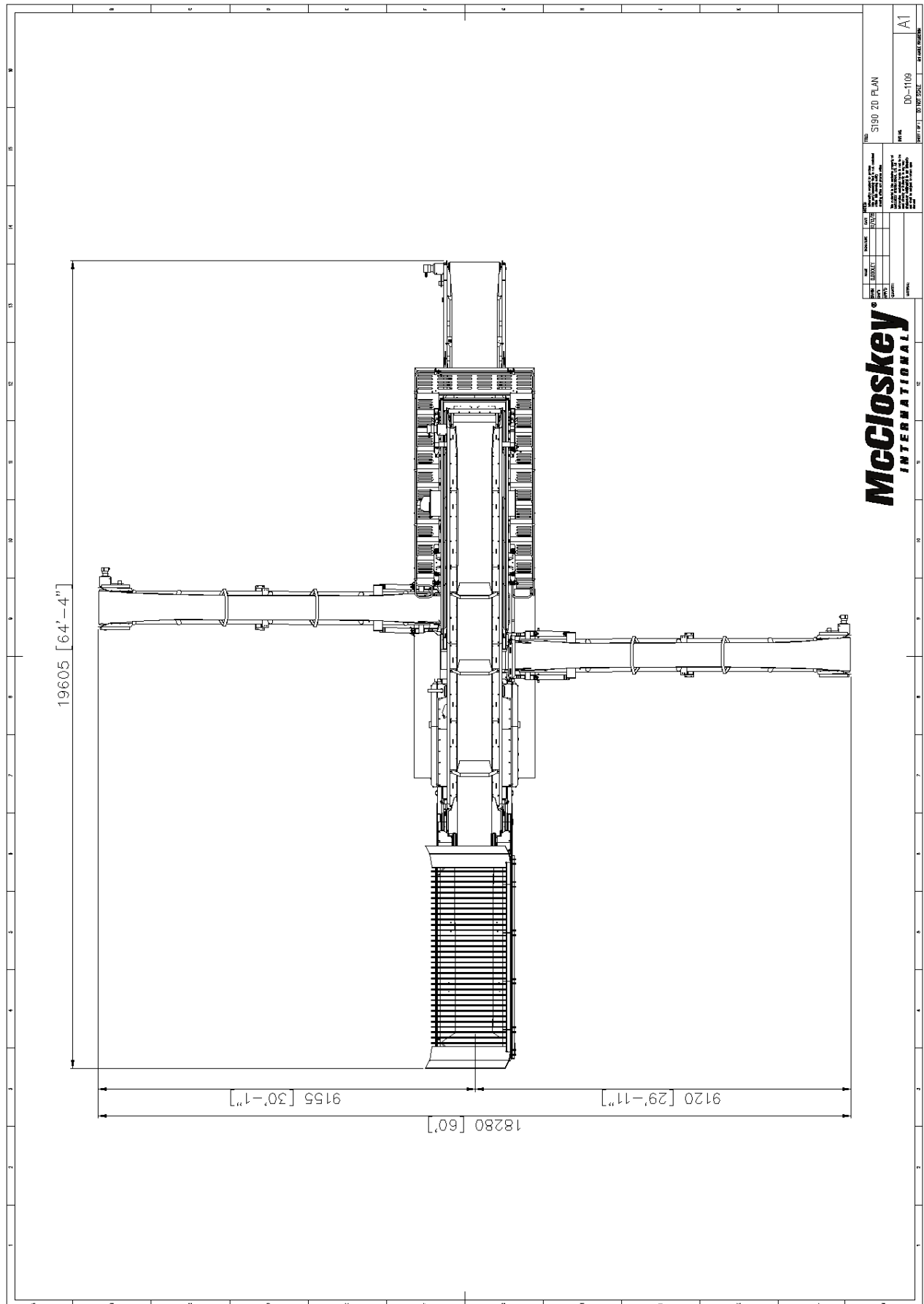
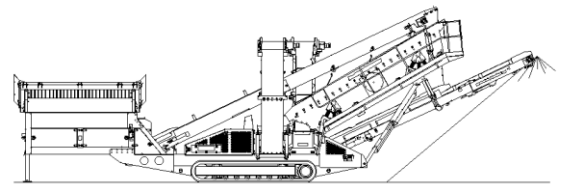
External belt alignment points  
External grease points  
Engine safety shutdown systems  
Full safety guarding for nip points

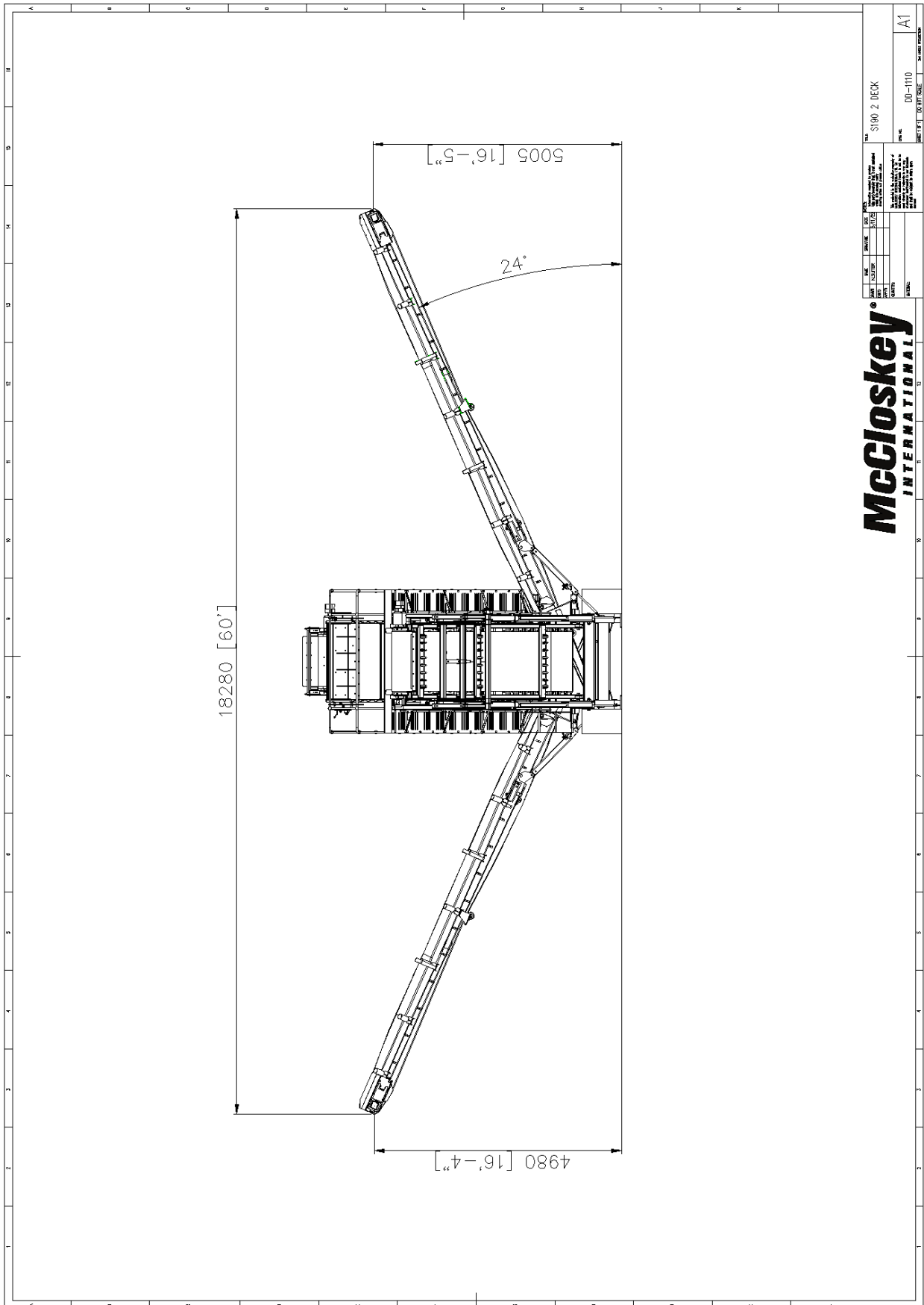
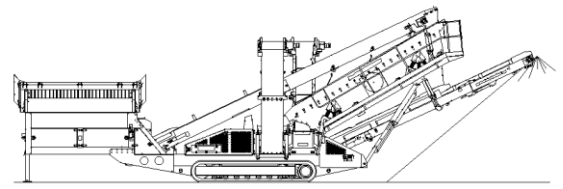


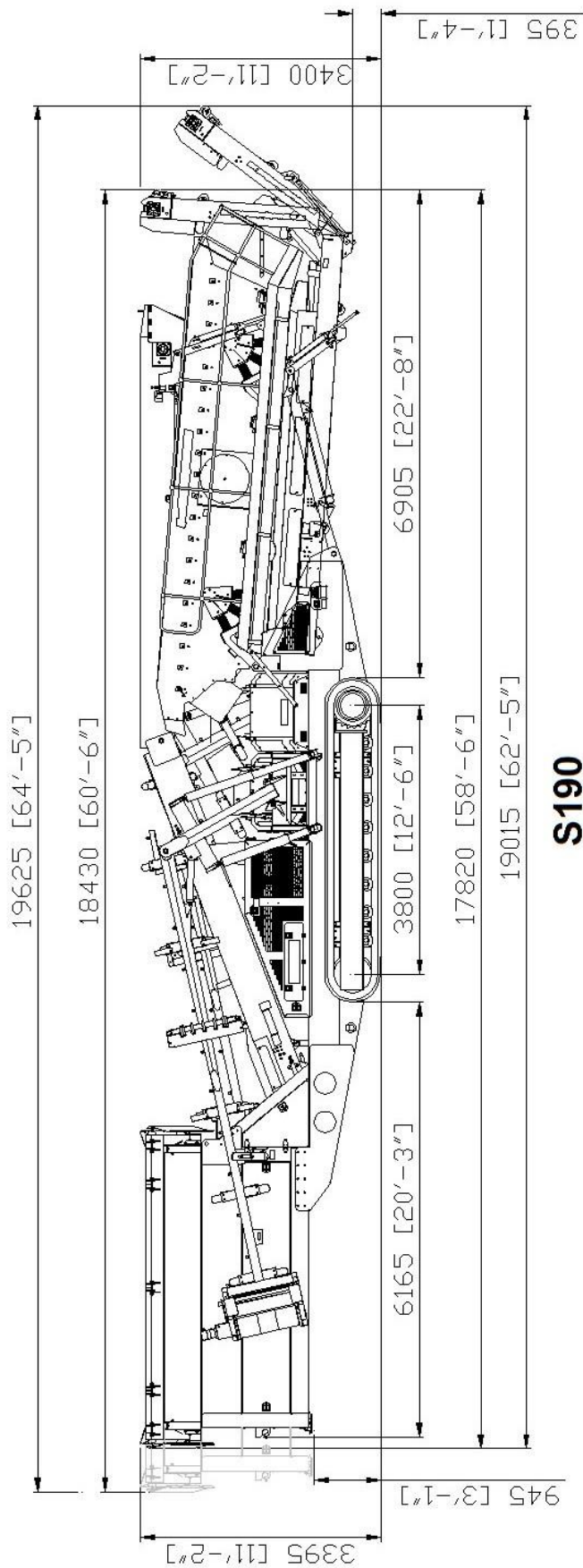
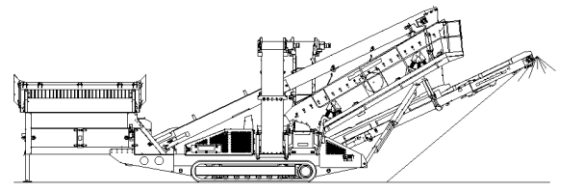




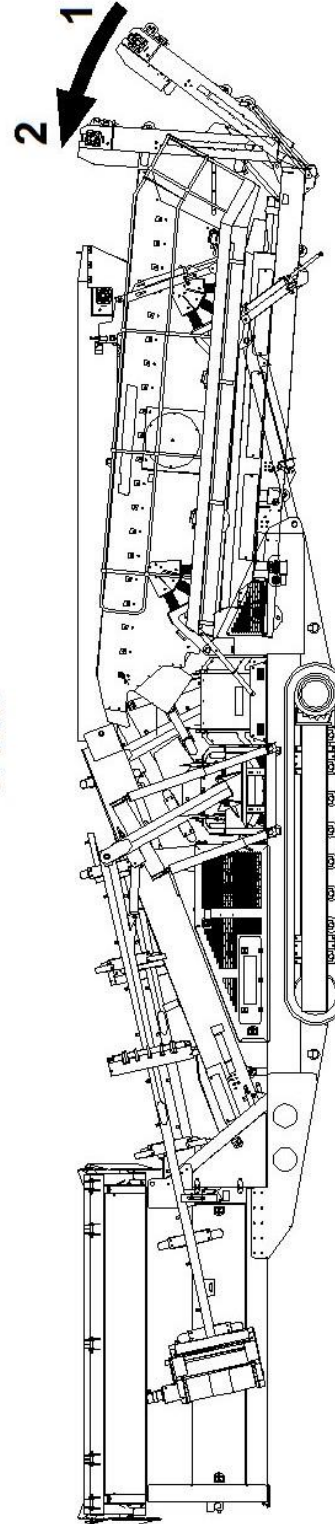








**S190**



**POSITION 1 PREVENTS DAMAGE WHEN RAISING THE SCREENBOX**

**POSITION 2 IS THE MINIMUM LENGTH MACHINE CAN BE FOLDED TO**