



NCSA Heavy Equipment

Contract 24-08-0421

Item Number: 50

Model Number: S130

Group: Asphalt Maintenance and Recycling Equipment

Build Number: 2D

Make: McCloskey International

MSRP: \$401,703.00

Model: Deck Screen

Discount 6%: (\$24,102.18)

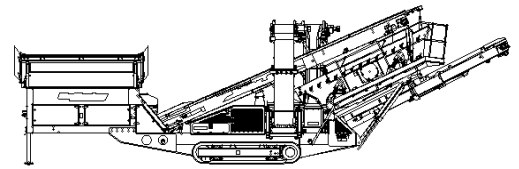
Total Net Price: \$377,600.82

Price Does Not Include Freight

Commonwealth Equipment * 36 Hazleton St * Ashley PA 18706

Phone: 877-217-4474 * commonwealthequipment.com

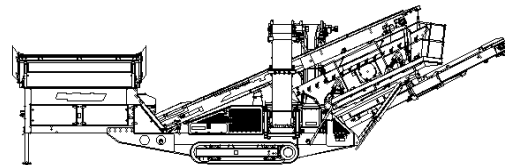
MST03282023



SPECIFICATIONS



McCloskey ***S130***



DESCRIPTION

Heavy duty mobile screener with following features:

- 14x5 heavy duty high energy 2 bearing screenbox.
- 130Hp Diesel engine.
- Track or wheel mobile.
- Integrated hydraulic folding stockpiling conveyors.
- Remote control tipping grid.
- Fast on site setup time – 10 minutes.

DIMENSIONS AND WEIGHTS

Length - transport

(Please see last page)

12ft Hopper	15.61m (51' - 2")
15ft hopper (Std)	16.52m (54'2")

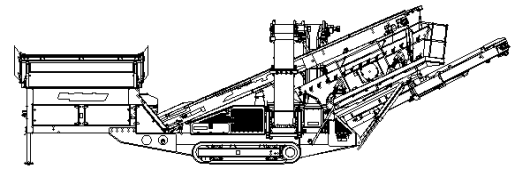
Width - transport	3m (9' - 11")
Height - transport 2 deck track	3.40m (11' - 2")
Height - transport 2 deck wheel	3.68m (12' - 1")
Weight - 2 deck track	28,000 Kgs (61729 lbs)
Weight - 2 deck wheel	23,000 Kgs (50,706 lbs) - estimated

CAPACITIES

Diesel tank capacity	399 L (105 US gal)
Hydraulic tank capacity	630 L (166 US gal)
Capacity - 12ft hopper	8.01 m ³ (10.48 yd ³)
Capacity - 15ft hopper	10.01 m ³ (13.09 yd ³)

FEED CONVEYOR

Belt width	1200mm (48")
Belt spec	Plain 500/3 6+3
Drive drum dia.	335mm (13.1")
Tail drum dia.	320mm (12.5")
Gearbox	Bonfig 805 W2
Gearbox ratio	24.2
Gearbox torque	7000Nm cont, 12500Nm max
Motor	160cc motor
Flow rate	50.6 Lpm (13.4 US gpm)
Adjustable speed	YES
Maximum speed	13.1 rpm



MAIN CONVEYOR

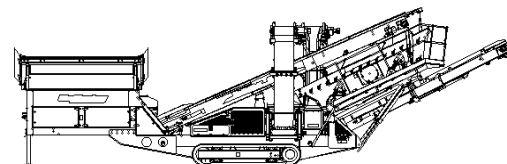
Belt width	1050mm (42")
Belt spec	Chevron 400/3 6+1.5
Option	Plain belt
Drive drum dia.	285mm (11.2")
Tail drum dia.	270mm (10.6")
Motor	630cc motor
Flow rate	72.6 Lpm (19.2 US gpm)
Adjustable speed	OPTION
Maximum speed	115.2 rpm

TAIL CONVEYOR

Stockpile height - track model	3871mm (12' - 8")
Stockpile height - wheel model	4139mm (13' - 7")
Belt width	1200mm (48")
Belt spec	Plain - 400/2 6+1.5
Drive drum dia.	285mm (11.2")
Tail drum dia.	270mm (10.6")
Motor	630cc motor
Flow rate	72.6 Lpm (19.2 US gpm)
Maximum speed	115.2 rpm

SIDE CONVEYOR

Stockpile height - track model	4600mm (15' - 1")
Stockpile height - wheel model	4870mm (15' - 11")
Belt width	650mm (26")
Belt spec	Chevron - 400/3 6+1.5
Drive drum dia.	285mm (11.2")
Tail drum dia.	270mm (10.6")
Motor	400cc motor
Flow rate	50.6 Lpm (13.4 US gpm)
Adjustable speed	YES
Maximum speed	126.5 rpm
Drum centers	9065mm (29' - 9")



SCREENBOX

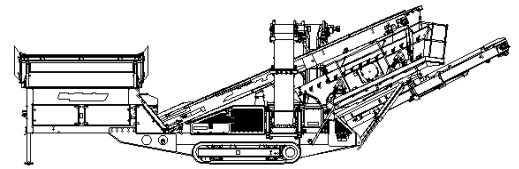
Dimensions - top deck	4270mm x 1524mm (14' x 5')
Dimensions - bottom deck	3660mm x 1524mm (12' x 5')
Bearing type 2 Deck	Premium brand bearings
Screens - top deck	5' x 4' side tension - 3 off & 5' x 2' side tension - 1 off
Screens - bottom deck	5' x 6' end tension - 2 off
Tensioning - top deck	Quick release pin and wedge
Tensioning - bottom deck	Curved tension bar and adjuster
Screen angle	25 to 38 deg
Screen motor	DBH MCC2208 (58.9cc/rev)
Drive system	Direct drive
Hydraulic flowrate	72.6 Lpm (19.2 US gpm)
Speed adjustable	YES - Pressure compensated FCV
Screen stroke adjustable	10mm maximum
Screen shaft speed	950 rpm
Screen 'g' force	4.29 - 5.05

POWERUNIT AND HYDRAULICS

Engine power	CAT C4.4(Tier 3, Tier 4F & Stage 5) Deutz 3.6 (Stage 5)
Engine speed	1800 rpm
Flywheel Pump 1	Cast iron 5041,5041
RH PTO Pump 2	Cast iron 5029,5029, 2SPA23
Total system flow	289 L (76.3 US Gpm)
Hydraulic tank capacity	630 L (166 US Gals)
Hydraulic tank ratio	2.18 : 1
Hydraulic Oil cooler	YES

ELECTRICS

Emergency stops	6 off, 1 feeder, 2 powerunit RH&LH, 2 chassis front RH&LH, 1 Walkway
Chassis cabling	Armored cable
Start Siren	YES - 10 sec delay
Engine shutdowns:	Low oil pressure High water temp Air filter blockage (selectable) Fuel contamination Low hydraulic tank level
Engine room light	YES
Remote tipping grid	YES - 2 function timed
Radio control tracks	optional - Hetronic system
Pendant track control	YES - plugged in at feeder end



TRACKS

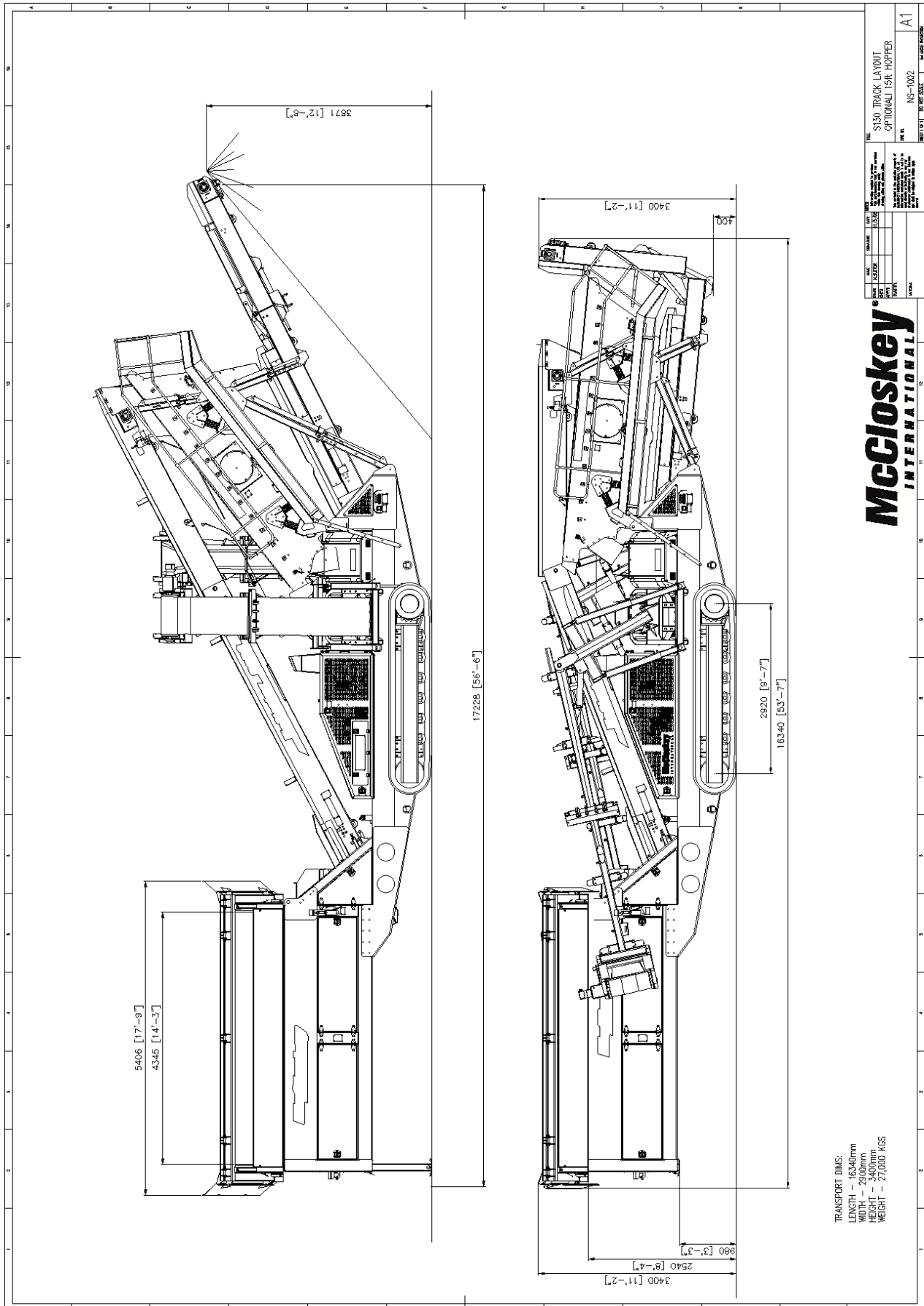
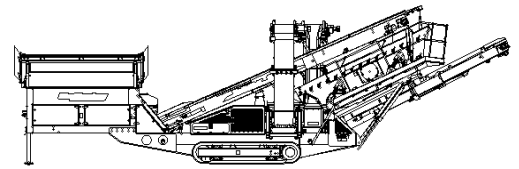
Width	500mm (19.7")
Length	2920mm (9' - 7") crs
Height	739mm (29.4")
Gearbox	Bonfiglioli 707
Ratio	122:1
Motor	Rexroth 63
Speed max	1.32 Kph (0.82 Mph)
Flow rate	72.6 Lpm (19.2 US gpm)
Dual speed	TBC
Attachment to chassis	Bolt On for quick change

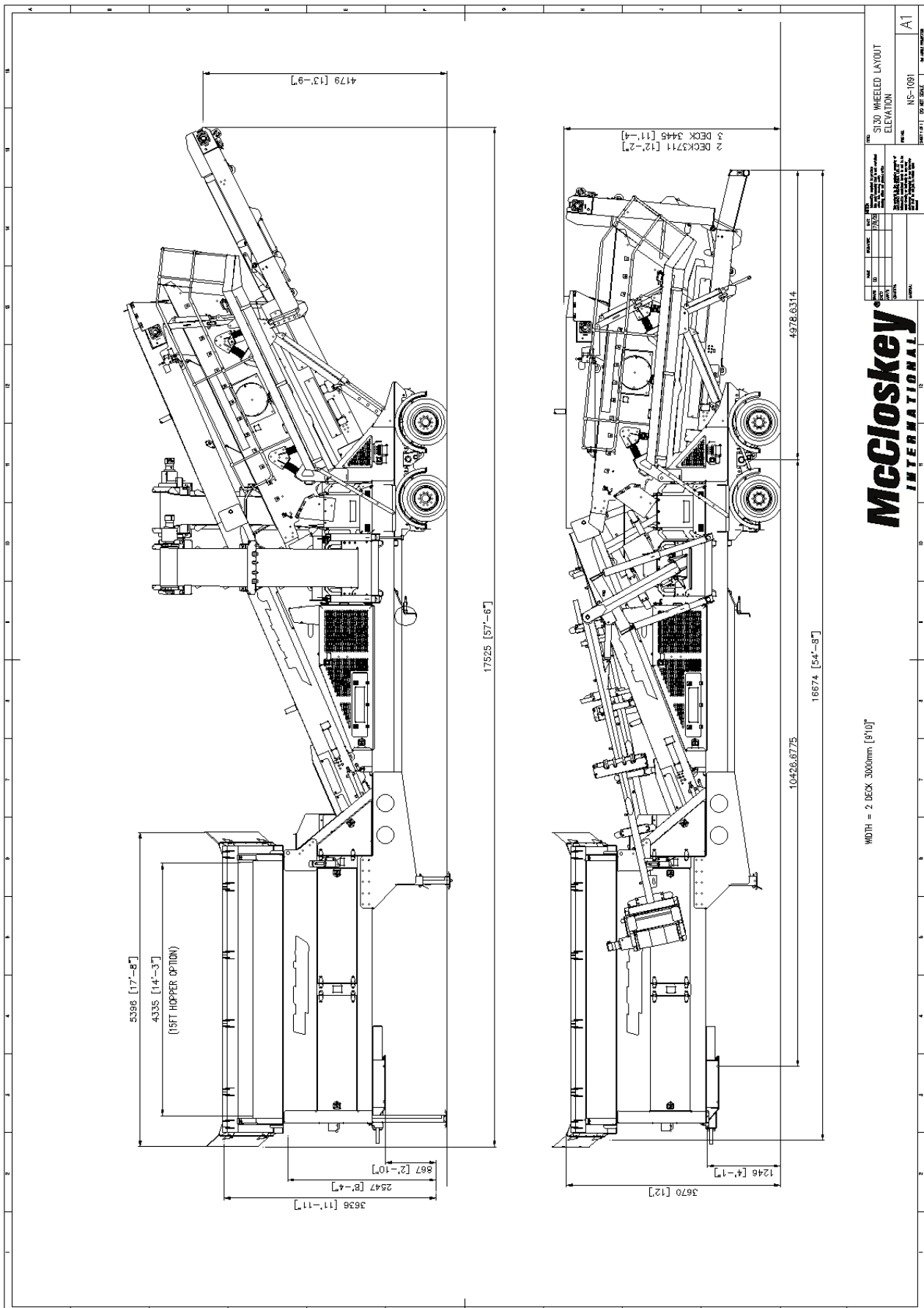
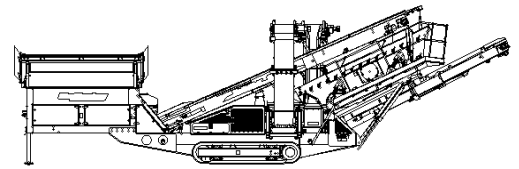
WHEELS

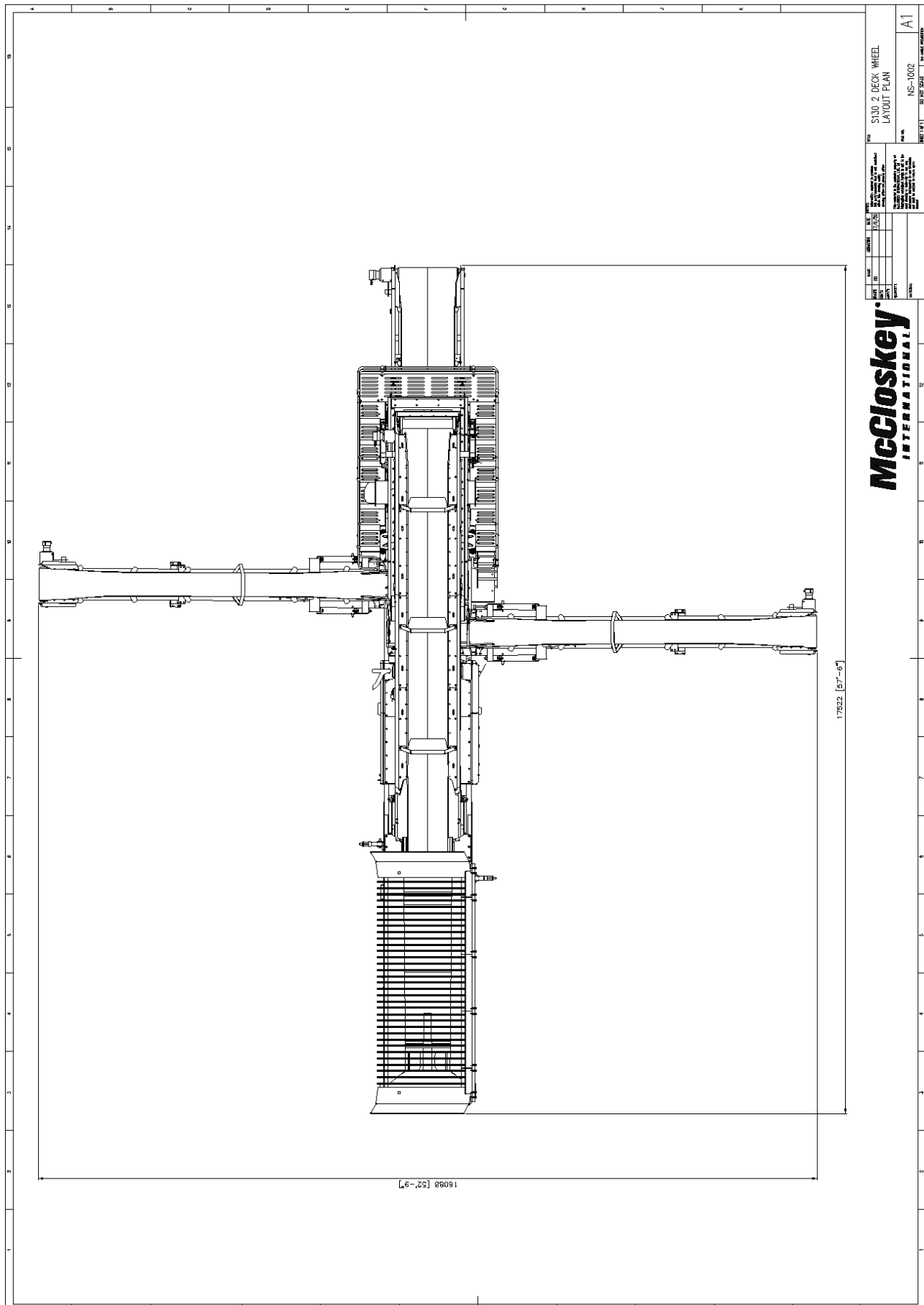
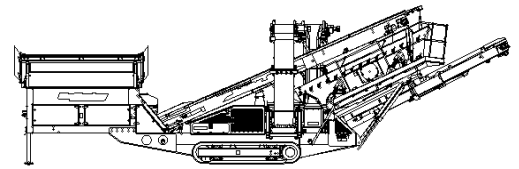
Width	2900mm (9' - 6")
Axle centers	1360mm (4' - 6")
Wheels	235/75/R17.5 dual
Axles	2 off
Brakes	YES
Spring suspension	YES
Mudguards	YES
Handbrake	YES
ABS	YES

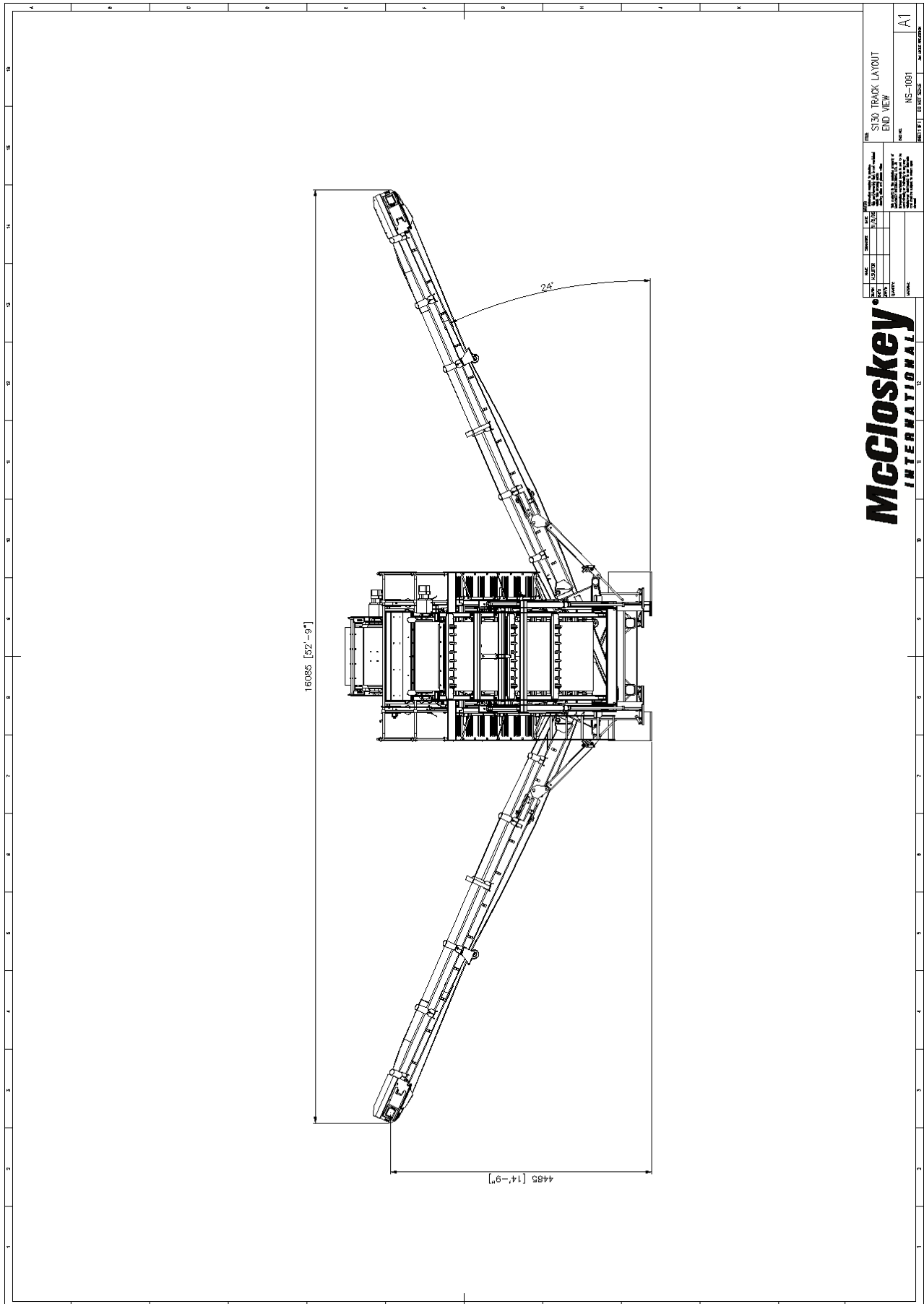
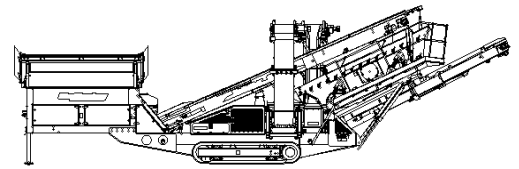
SAFETY FEATURES

External belt alignment points
External grease points
Engine safety shutdown systems
Full safety guarding for nip points



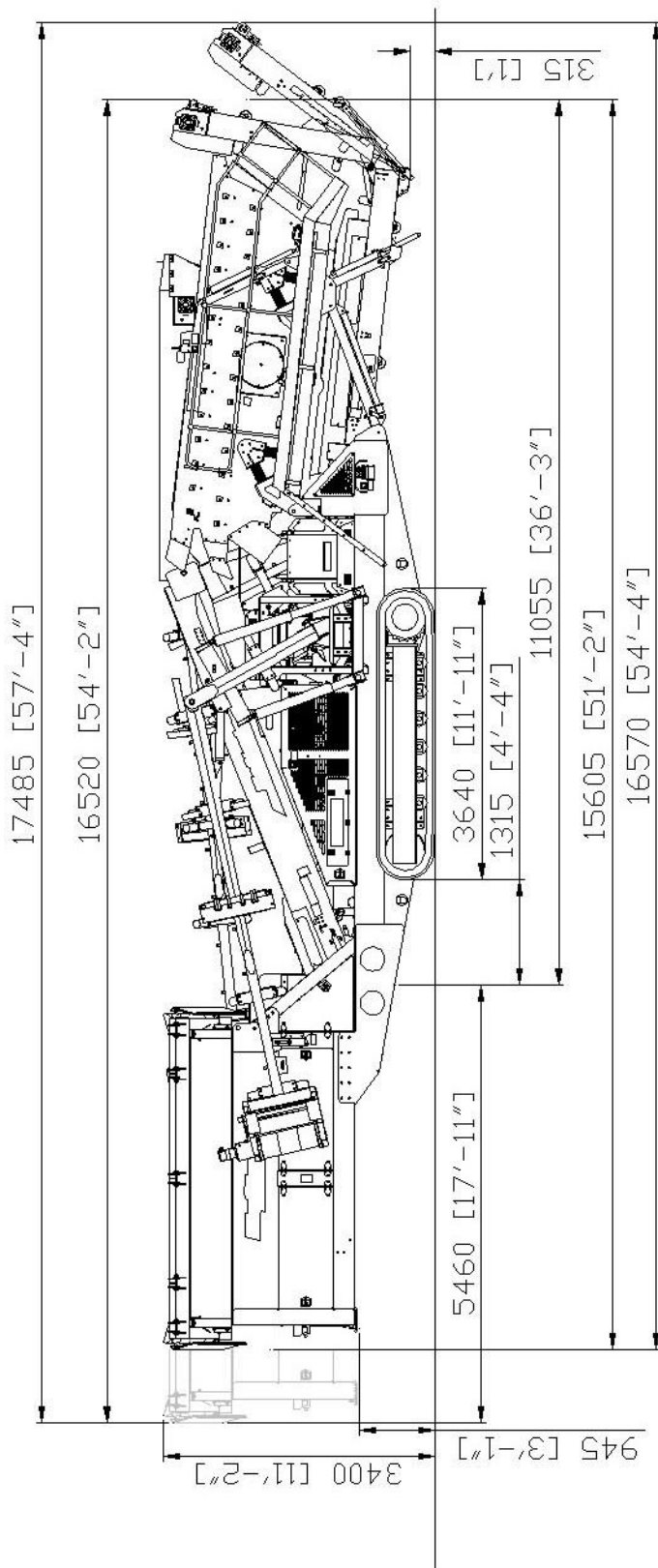
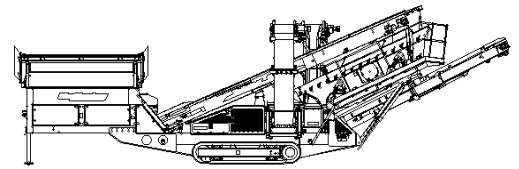




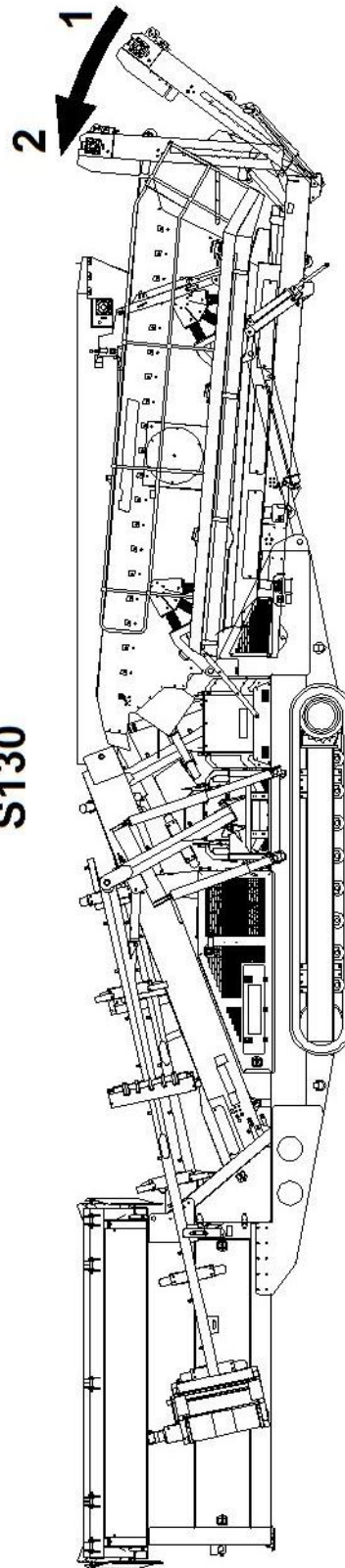


**McCloskey®
INTERNATIONAL**

S130 TRACK LAYOUT END VIEW		A1
REV	DATE	BY
1	11/22/22	NS-1091
2	11/22/22	NS-1091
3	11/22/22	NS-1091
4	11/22/22	NS-1091
5	11/22/22	NS-1091
6	11/22/22	NS-1091
7	11/22/22	NS-1091
8	11/22/22	NS-1091
9	11/22/22	NS-1091
10	11/22/22	NS-1091
11	11/22/22	NS-1091
12	11/22/22	NS-1091
13	11/22/22	NS-1091
14	11/22/22	NS-1091
15	11/22/22	NS-1091
16	11/22/22	NS-1091
17	11/22/22	NS-1091
18	11/22/22	NS-1091
19	11/22/22	NS-1091
20	11/22/22	NS-1091
21	11/22/22	NS-1091
22	11/22/22	NS-1091
23	11/22/22	NS-1091
24	11/22/22	NS-1091
25	11/22/22	NS-1091
26	11/22/22	NS-1091
27	11/22/22	NS-1091
28	11/22/22	NS-1091
29	11/22/22	NS-1091
30	11/22/22	NS-1091
31	11/22/22	NS-1091
32	11/22/22	NS-1091
33	11/22/22	NS-1091
34	11/22/22	NS-1091
35	11/22/22	NS-1091
36	11/22/22	NS-1091
37	11/22/22	NS-1091
38	11/22/22	NS-1091
39	11/22/22	NS-1091
40	11/22/22	NS-1091
41	11/22/22	NS-1091
42	11/22/22	NS-1091
43	11/22/22	NS-1091
44	11/22/22	NS-1091
45	11/22/22	NS-1091
46	11/22/22	NS-1091
47	11/22/22	NS-1091
48	11/22/22	NS-1091
49	11/22/22	NS-1091
50	11/22/22	NS-1091
51	11/22/22	NS-1091
52	11/22/22	NS-1091
53	11/22/22	NS-1091
54	11/22/22	NS-1091
55	11/22/22	NS-1091
56	11/22/22	NS-1091
57	11/22/22	NS-1091
58	11/22/22	NS-1091
59	11/22/22	NS-1091
60	11/22/22	NS-1091
61	11/22/22	NS-1091
62	11/22/22	NS-1091
63	11/22/22	NS-1091
64	11/22/22	NS-1091
65	11/22/22	NS-1091
66	11/22/22	NS-1091
67	11/22/22	NS-1091
68	11/22/22	NS-1091
69	11/22/22	NS-1091
70	11/22/22	NS-1091
71	11/22/22	NS-1091
72	11/22/22	NS-1091
73	11/22/22	NS-1091
74	11/22/22	NS-1091
75	11/22/22	NS-1091
76	11/22/22	NS-1091
77	11/22/22	NS-1091
78	11/22/22	NS-1091
79	11/22/22	NS-1091
80	11/22/22	NS-1091
81	11/22/22	NS-1091
82	11/22/22	NS-1091
83	11/22/22	NS-1091
84	11/22/22	NS-1091
85	11/22/22	NS-1091
86	11/22/22	NS-1091
87	11/22/22	NS-1091
88	11/22/22	NS-1091
89	11/22/22	NS-1091
90	11/22/22	NS-1091
91	11/22/22	NS-1091
92	11/22/22	NS-1091
93	11/22/22	NS-1091
94	11/22/22	NS-1091
95	11/22/22	NS-1091
96	11/22/22	NS-1091
97	11/22/22	NS-1091
98	11/22/22	NS-1091
99	11/22/22	NS-1091
100	11/22/22	NS-1091



S130



POSITION 1 PREVENTS DAMAGE WHEN RAISING THE SCREENBOX

POSITION 2 IS THE MINIMUM LENGTH MACHINE CAN BE FOLDED TO