

**CURBTENDER CSL24 SC COMPACTOR**

24 YD CONTAINER CAPACITY

GAS ENGINE POWERED

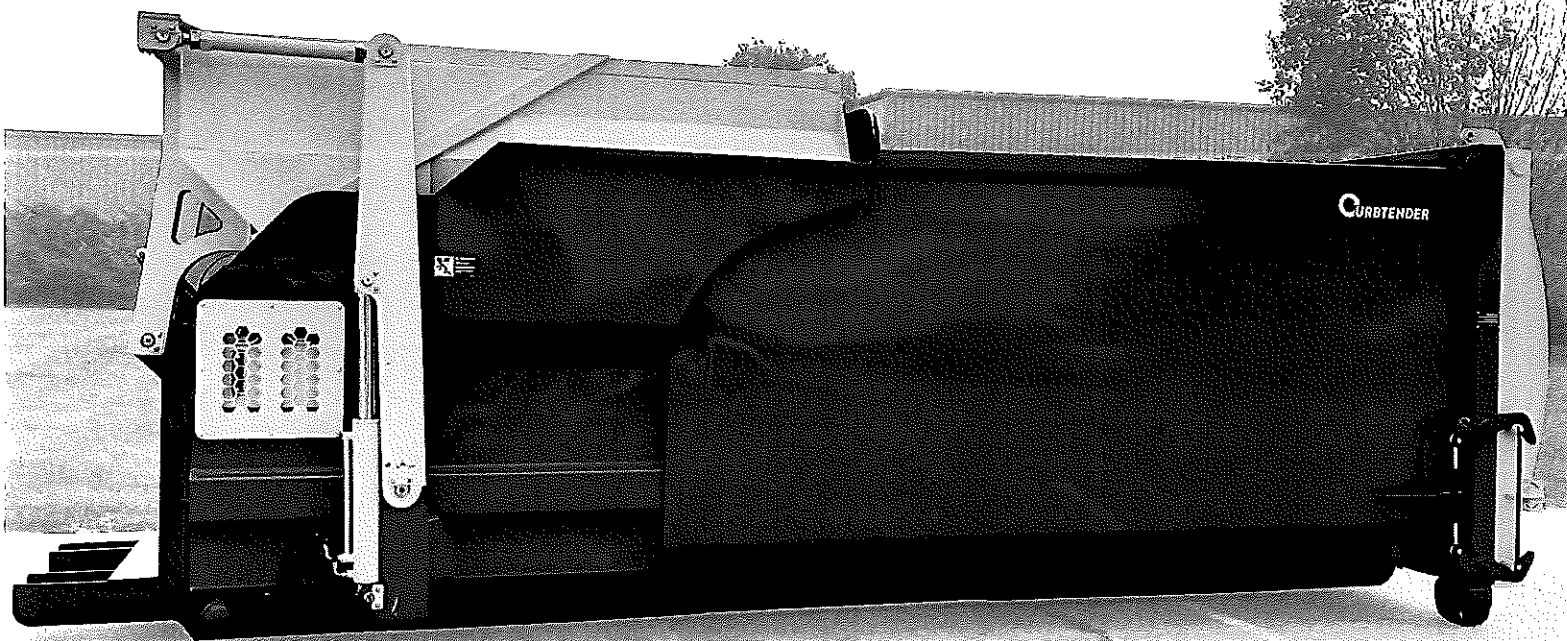
ROLL-OFF HOIST UNDERSTRUCTURE

COLLECTION TRAY STORES IN THE DUMP POSITION TO DENY ACCESS  
INTO THE CONTAINER

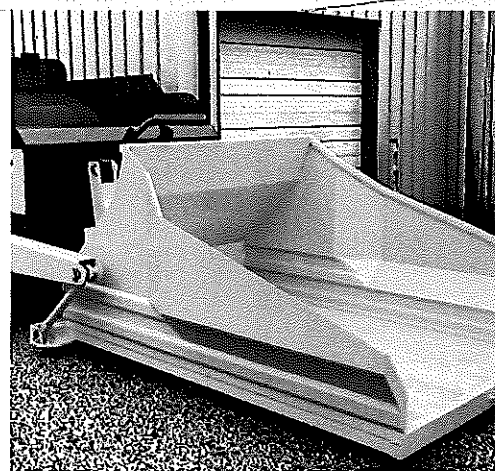
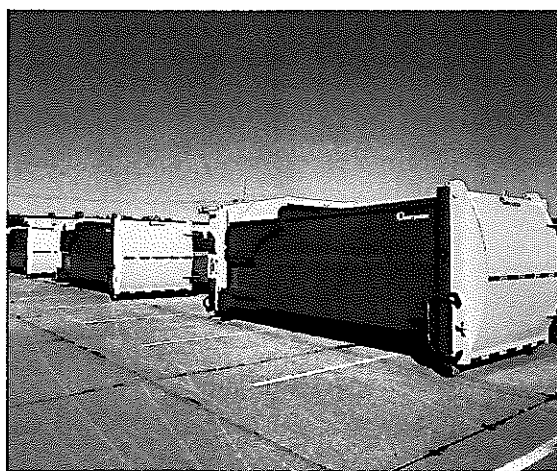
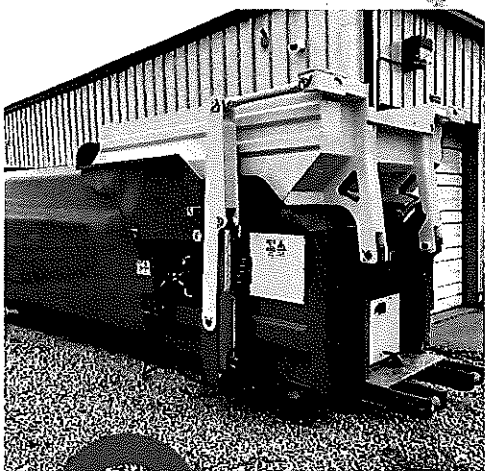
IDEAL FOR EVENTS, FOOD PRODUCTION FACILITIES, WASTE SECURITY  
APPLICATIONS, & REMOTE LOCATIONS WITHOUT PROPER POWER

\$76,902.00

# CSL24



## 24YD Self-Loading, Self-Contained Compactor



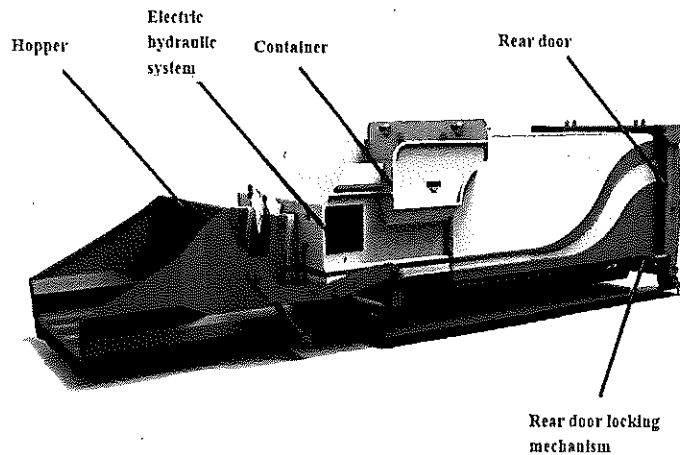
# CURBTENDER

DISPOSAL SYSTEMS

701 PERFORMANCE DRIVE | CEDAR FALLS, IA 50613

PHONE: 319.266.1721 | FAX: 319.266.8207

© 2022 Curbtender Inc., All Rights Reserved. Specifications subject to change.



### SPECIFICATIONS

<b>Container Volume</b>	24yd <sup>3</sup>
<b>External Dimensions</b> L" x W" x H"	Hooklift: 258" x 98.5" x 97" (In Transportation) Roll off: 272" x 98.5" x 97" (In Transportation)
<b>External Dimensions</b> L" x W" x H"	364" x 98.5" x 168" (In Operation) (H=Top of Hopper Arc of Travel)
<b>Height of Hook Center</b>	61.75"
<b>External Width of Container Rails</b>	41.7"
<b>Total Weight</b>	13,000 LBS.

#### Compactor

- Width x Height of Pack Panel: 76.6" x 18.9"
- Effective Working Volume of Compaction Compartment: 4.7yd<sup>3</sup>
- Net Lifting Weight of Tipping Mechanism: 3,000 LBS.
- Theoretical Throughput: 19 (t/h)
- Max. Compaction Force: 65,000 LBS.
- Estimated Density After Compaction: 950 LBS./yd<sup>3</sup>

#### Debris Hopper

- Hopper Volume: 5.9yd<sup>3</sup>
- Internal Width x Length of Hopper: 90.5" x 102"

#### Power Supply

- Power Supply Options: 240V Single Phase, Low or High Voltage Three-Phase
- Motor Power: 10 HP

#### Hydraulics

- Rated System Pressure: 1800 PSI