

ACX64 Class 8 Model Year 2025

Vanguard Truck Center of Charlotte
NA

Prepared By : Mark Hughel
704-597-4212
Mark.Hughel@vanguardtrucks.com

Prepared For : KAYLYN MITMAN
NORTH CAROLINA SHERIFF'S
ASSOCIATION

Monday, March 13, 2023 10:55:59 AM EST

03/13/2023

Chassis Specification

			Description	Front Weight	Rear Weight
AUTOCAR TRUCKS					
S	0040002	MODELS	ACX64	10,431	6,154
S	5000001	CAB SHELL	SINGLE LEFT HAND DRIVE CAB	0	0
VEHICLE ADAPTATION					
S	114010	COUNTRY OF USE	UNITED STATES STD MARKET ADAPTATION	0	0
SOLUTION					
S	C070001	FUEL SYSTEM TYPE	DIESEL	0	0
S	C090003	AXLE QUANTITY	3 AXLE	0	0
S	C080001	REAR SUSPENSION TYPE	STD/BEAM TYPE REAR SUSPENSION	0	0
ENGINE					
S	1012102	ENGINE ASSY	L9, 360HP / 2200RPM / 1150 LB- FT, CUMMINS	0	0
O	972A002	SPECIAL EMISSION CERTIFICATION LABELS	EPA CERTIFIED - NO LABEL REQUIRED (DIESEL)	0	0
S	9722024	CERTIFICATION- EMISSIONS	MY2024 ENGINE	0	0
S	972B001	ZEV PENALTY	NO PENALTY	0	0
S	4460001	FUEL TYPE	ULTRA-LOW SULPHUR DIESEL FUEL REQUIRED	0	0
ENGINE EQUIP					
S	128071	ENGINE CONTROL SPECIFICATIONS	DEFAULT SPECS	0	0
S	1290004	ENGINE ELECTRONICS	CUMMINS 500K COMMUNICATION	0	0
S	4382005	FILTER-FUEL, CHASSIS MOUNTED	FLEETGUARD FS20121 F/W SEPARATOR W/PROBE AND DASH LIGHT	0	0
S	1700001	FILTER-FUEL, ENGINE MOUNTED	SECONDARY SPIN-ON FILTER, REMOTE MTD.	0	0
S	2080001	FAN & DRIVE-ENGINE	2-SPEED FAN	0	0
S	2120003	RADIATOR SURGE TANK	STANDARD SURGE TANK W/ SIGHT GLASS	0	0
S	2200001	AIR CLEANER	15" ONE STAGE EPG CLEANER DONALDSON	0	0
S	226001	AIR INTAKE RAIN CAP	BLACK, HOOD TYPE	0	0
S	2302000	MUFFLER SYSTEM	RH VERT HORIZ DPF/SCR	0	0

S	2310003	EXHAUST SHIELDS	DPF & SCR SHIELDS	0	0
S	2322001	EXHAUST STACKS	90 DEGREE SIDE OUT DIFFUSER	0	0
S	115A200	TURBO HEAT SHIELD	TURBO HEAT SHIELD	0	0
S	2390002	UREA DELIVERY SYSTEM	OVER-FENDER MTD., LH SIDE, 10 GAL. CAPACITY	0	0
S	5300001	ENGINE/EXHAUST COVER	ALUM TURBO/EXHAUST PIPE DEBRIS SHIELD	0	0
S	700026	AIR COMPRESSOR	CUMMINS WABCO 18.7 CFM COMPRESSOR	0	0
S	8200003	STARTING MOTOR	DELCO REMY 12V 39 MT W/OCP	0	0
S	8020004	ALTERNATOR	DELCO REMY 36SI 12V 160 AMP	13	0
S	P020001	ENGINE IDLE SHUT DOWN	ENGINE IDLE SHUT DOWN ENABLED (5 MINUTES)	0	0
S	P030001	CRUISE CONTROL PARAMETER	CRUISE CONTROL ENABLED	0	0
S	P641200	RPM PTO MODE	1200 RPM MAX IN PTO	0	0
S	P701200	PTO SET SWITCH	PTO SET SWITCH = 1200 RPM	0	0
S	P711000	PTO RESUME SWITCH	PTO RESUME SWITCH = 1000 RPM	0	0
S	204B001	COOLANT HOSE HEAT SLEEVE	STANDARD HEAT SLEEVE	0	0
S	P010065	VEHICLE GOVERNED SPEED LIMIT	SPEED LIMIT 65MPH	0	0

TRANSMISSION

S	2580003	VOCATION	RDS REFUSE - VOC 400-XXX	0	0
S	26A0001	TRANSMISSION SHIFT SCHEDULE / FUEL SENSE	PRIMARY PERFORMANCE / SECONDARY ECONOMY	0	0
S	PT10001	TRANS DIRECTION CHANGE SHIFT INHIBIT	SHIFT INHIBIT ENABLED	0	0
S	27P0000	TRANSMISSION RETARDER AUDIBLE ALARM	NO TRANSMISSION RETARDER AUDIBLE ALARM	0	0
S	2700021	TRANSMISSION	ALLISON 3000 SERIES, 5- SPEED	0	0
S	287A200	TRANSMISSION BREATHER	TRANSMISSION REMOTE BREATHER	0	0
S	284016	TRANSMISSION CONTROLS	ALLISON PUSHBUTTON CONTROLS	0	0
S	286005	COOLER-TRANSMISSION OIL	OIL TO WATER TYPE	0	0
S	290003	TRANSMISSION OIL FILL/CHECK	OIL FILL TUBE / DIPSTICK W/ LEVEL SENSOR	0	0
S	300015	DRIVESHAFT-MAIN	SPICER 1710HD HALF ROUND	-5	-10

FRONT AXLE

S	3700002	FRONT AXLE	MERITOR MFS-20 STEER AXLE, 20000# CAPACITY	0	0
S	3690005	FRONT AXLE POSITION	52.5 INCHES	0	0
S	371135	FRONT SUSPENSION	9500 LOW CAMBER FLATLEAF 20,800 GROUND CAPACITY	0	0
S	371T98	SUSPENSION, FRONT AUX	NO AUX LOAD CUSHION PROVIDED	0	0
S	373002	SHOCK ABSORBERS- FRONT	DOUBLE ACTING SINGLE - HEAVY DUTY	0	0
S	904011	HUBS-FRONT	STEEL HUB PILOTED,285MM BOLT CIRCLE	0	0
S	9400001	WHEEL OIL SEALS-FRONT	SCOTSEAL PLUS XL	0	0
S	9210001	HUB CAPS - FRONT AXLE	CR ZYTEL HUBCAP	0	0
S	374002	FRONT AXLE LUBRICANT	SYNTHETIC,DANA SPICER EP75W90,OR EQUIV	0	0
S	7510003	BRAKES-FOUNDATION, FRONT AXLE	MERITOR 16.5X6 QP	0	0
S	754009	BRAKE SLACK ADJUSTERS -FRONT AXLE	MERITOR AUTOMATIC	0	0
S	755001	DUST SHIELDS - FRT BRAKES	DUST SHIELDS - FRONT BRAKES	0	0
S	901001	BRAKE DRUM-FRONT	CAST IRON	0	0
S	383101	STEERING GEAR	INTEGRAL POWER STEERING W/RIGHT HAND RAM	0	0
S	387003	POWER STEERING RESERVOIR	FOUR QUART REMOTE MOUNTED	0	0

REAR AXLE

S	3300041	REAR DRIVE AXLE-SINGLE & TANDEM	MERITOR MT40-14X W/ .5" HOUSING (40000 LBS)	0	0
S	330U98	REAR AXLE LUBE PUMP	NO LUBRICATION PUMP	0	0
X	331996	REAR DRIVE AXLE RATIO	MUST CHOOSE REAR DRIVE AXLE RATIO	0	0
S	3502010	REAR SUSPENSION	HENDRICKSON HMX-EX-400 SUSPENSION @ 54" AS	0	0
S	351013	REAR SUSPENSION BEAMS	54 INCH STEEL RUBBER BUSHED	0	0
S	358005	TORQUE RODS	LONGITUDINAL & TRANSVERSE - RUBBER BUSHED	0	0
S	9130001	HUBS-REAR	IRON HUB, HP 10 STUD	0	0
S	3400001	REAR AXLE BREATHER	STANDARD AXLE BREATHER	0	0
S	9410001	WHEEL OIL SEALS-REAR	SCOTSEAL PLUS XL	0	0
S	7610003	BRAKES-FOUNDATION, REAR AXLE	MERITOR 16.5X7 Q PLUS	0	0
S	764013	BRAKE SLACK ADJUSTERS -REAR AXLE	MERITOR AUTOMATIC,TANDEM AXLE	0	0

S	765001	DUST SHIELDS - REAR BRAKES	DUST SHIELDS - REAR BRAKES	0	0
S	781012	BRAKE CHAMBERS-PARKING, TYPE/VENDOR	CAM TYPE MGM STOPGARD (4)	0	0
S	910001	BRAKE DRUM-REAR	CAST IRON	0	0

BRAKES

S	729002	AIR LINES-PARKING BRAKE, CHASSIS	AIR LINES CHASSIS PARK BRAKE	0	0
S	7410004	BRAKE CONTROL SYSTEM	MERITOR WABCO ABS 4S/4M W/PLC	0	0

CHASSIS

S	400210	WHEELBASE	210 INCHES	0	0
S	402104	FRAME-REAR OVERHANG	104"	0	0
S	403012	FRAME RAILS	3/8" VARIABLE DROP STEEL, EXT B	0	0
S	409002	FRAME CROSSMEMBER-CENTER	ALUMINUM ORIENTATION B	0	0
S	4110002	FRAME CROSSMEMBER-END CLOSING	ALUMINUM MEMBER-IF REQUIRED	0	0
S	460001	BUMPER-FRONT	STEEL PAINTED	0	0
S	480002	TOWING DEVICE-FRONT	TWO REMOVABLE TOW PINS	0	0
S	8742000	WIRING, BODY INTERFACE	RP 170 COMPLIANT	0	0
S	430020	FUEL TANK-LEFT	75 GAL 26" DIA UNPAINTED ALUMINUM	0	0
S	4470001	LH FUEL TANK SPACERS	LH FUEL TANK STANDARD HEIGHT	0	0
S	432002	FUEL TANK STRAP/SUPPORT LEFT	PAINTED STEEL, LH	0	0
S	4280001	DRILLING FUEL TK SUPT-LEFT	FUEL TANK MTD FWD LHS - STANDARD (IF PROVIDED)	0	0
S	436015	FUEL LINES	SAE J1402A1 WIRE BRAIDED	0	0
S	8120005	BATTERY BOX	STEEL BOX, 3 BATTERY, LHS	0	0
S	8160001	BATTERY BOX SPACERS	BATTERY BOX STANDARD HEIGHT	0	0
S	8090001	BATTERY BOX DRILLING	BOX LOCATED AS FAR FORWARD AS POSSIBLE	0	0
S	810089	BATTERY	3 JOHNSON CONTROL 31ECL 12V 2250CCA	0	0
S	8140002	BATTERY SHUT-OFF SWITCH	SHUTOFF W/ LOCKOUT, NO EMERGENCY JUMPER STUDS	0	0
S	7110001	AIR TANK-BRAKE	STEEL AIR TANKS	0	0
S	7090002	AIR TANK DRILLING	AIR TANKS IN STANDARD POSITION	0	0
S	7152000	WET TANK DRAIN	WABCO DV-2 AUTOMATIC	0	0

S	715T001	AIR RESERVOIR DRAIN SYSTEM	PETCOCK, ALL TANKS	0	0
S	7130001	AIR DRYER	WABCO 1800P W/HEAT	0	0
S	7100003	AIR DRYER DRILLING	AIR DRYER MOUNTED OUTSIDE RAIL, LHS	0	0
S	724001	AIR LINES-CAB	SAE J844 NYLON TUBING	0	0

CAB EXTERIOR

S	4510001	STEP-CAB ACCESS, CAB MOUNTED	DUAL SELF CLEANING CAB ENTRANCE STEPS	0	0
S	502001	CAB DOORS	STEEL	0	0
S	6220015	MIRRORS-DUAL WEST COAST	MIRROR, BLACK, W / LWR CONVEX	0	0
S	630026	HORN-AIR	TWIN MOUNTED UNDER CAB	0	0
S	631001	HORN-ELECTRIC	SINGLE	0	0
S	661001	CAB TILT MECHANISM-C.O.E.	HYDRAULIC TILT	0	0
S	6720001	GRILLE	AUTOCAR GRILLE	0	0
S	675001	BUG SCREENS	BUG SCREEN MOUNTED BEHIND GRILLE	0	0

CAB INTERIOR

S	3800001	STEERING WHEEL	16" DIA. WHEEL, 2 SPOKE	0	0
S	3810002	STEERING COLUMN	TILT AND TELESCOPIC STEERING COLUMN	0	0
S	520234	SEAT-DRIVER	NATIONAL CUSH II LOW BACK, AIR RIDE	0	0
S	521110	SEAT-PASSENGER	FIXED TYPE, LOW BACK	0	0
S	5222000	SEAT BELTS-DRIVER	THREE POINT RETRACTABLE, W/O COMFORT LATCH	0	0
S	5232000	SEAT BELTS-PASSENGER	THREE POINT RETRACTABLE, W/O COMFORT LATCH	0	0
S	526014	SEAT INSERT	BLACK CORDURA	0	0
S	538001	CARPET & MAT	MAT WITH FOAM BACK	0	0
S	5500001	CENTER CONSOLE	CENTER CONSOLE	0	0
S	5510001	REAR CONSOLE	REAR CONSOLE	0	0
S	5942001	CIGAR LIGHTER	ONE (1) POWER PORT AND ONE (1) USB POWER PORT	0	0

CAB CLIMATE CONTROL

S	0602001	CAB TEMPERATURE SYSTEM	AIR COND INTEGRAL WITH HEATER/DEFROSTER (GHG)	0	0
S	612001	AIR CONDITIONER CONDENSER	STANDARD (RADIATOR MOUNTED)	0	0

GAUGES & INSTRUMENTATION

S	0572001	INSTRUMENTS SALES PKG	ADVANCED DIAGNOSTIC DISPLAY - V1	0	0
S	1430001	TRUCK ELECTRICAL CONTROL MODULE	VEHICLE CONTROL UNIT	0	0
S	1362000	TACHOMETER/RPM TACHOGRAPH	ELECTRONIC TACHOMETER	0	0
S	1372000	GAUGE-HOURMETER	HOURLMETER INCLUDED IN ON BOARD DISPLAY	0	0
S	225009	AIR INTAKE RESTRICTION INDICATOR	GRADUATED, AIR CLEANER MOUNTED	0	0
S	4390001	GAUGE-FUEL LEVEL	ELECTRONIC FUEL LEVEL	0	0
S	5712003	GAUGE PANELS	ALL GAUGES IMPERIAL	0	0
S	1472001	VEHICLE MONITORING SYSTEM	AUTOCAR ADVANCED TELEMATICS - FULL INSTALLATION	0	0

LIGHTING

S	8360003	LAMPS-HEAD	LED HEADLAMPS	0	0
S	8410002	LAMPS-TURN SIGNAL - FRONT	LED FRONT TURN SIGNALS	0	0
S	8510002	LAMPS-MARKER	AMBER LED ROOF MARKERS	0	0
S	859001	LAMPS-RUNNING	DAYTIME	0	0
S	8700001	CIRCUIT PROTECTION DEVICE	AUTO CIRCUIT BREAKERS	0	0

RADIO/MISC

S	509001	KEY & LOCK SETS- IGN/DOORS	DOOR & IGNITION SAME - UNIQUE PER TRUCK	0	0
S	509Q2000	KEY QTY.	0 ADDITIONAL KEYS PER TRUCK (2 TOTAL)	0	0

FRONT TIRES / WHEELS

S	9312009	TIRE MANUFACTURER & TREAD - FRONT	BRIDGESTONE M870	0	0
S	930469	TIRE SIZE & LOAD RANGE - FRONT	315/80R22.5L	0	0
S	9050015	WHEELS-DISC FRONT	22.5X9.0" STEEL, 5.25" INSET, HAYES	0	0

REAR TIRES / WHEELS

S	9342002	TIRE MANUFACTURER & TREAD - REAR	BRIDGESTONE M853	0	0
S	933062	TIRE SIZE & LOAD RANGE - REAR	11R22.5H	0	0
S	9140014	WHEELS-DISC REAR	22.5X8.25" STEEL, 6.2" INSET, HAYES	0	0

PAINT

S	950001	CAB PAINT SCHEME	SINGLE COLOR PAINT	0	0
S	9550001	CAB PAINT TYPE	STANDARD WHITE	0	0

S	9801002	CAB COLOR-FIRST	APPROVED --- DPSS-N0007EX --- STANDARD WHITE N0007	0	0
S	9861U1	CHASSIS COLOR	BLACK P3036	0	0
S	987949	BUMPER COLOR	SAME AS CHASSIS,UNPAINTED ALUM OR CHROME	0	0
S	988401	DISC WHEEL OR RIM COLOR	STEEL, E-COAT WHITE / ALUM-UNPAINTED	0	0

ADDITIONAL OPTIONS

S	899002	CHASSIS WARRANTY	STANDARD WARRANTY	0	0
S	899A200	TRANSMISSION WARRANTY	ALLISON 3YR. WARRANTY	0	0
S	899B001	ENGINE WARRANTY	CUMMINS STANDARD WARRANTY	0	0
S	978015	FLOOR PLAN	15 DAYS FLOORING	0	0

OTHERS

S	9722024	CERTIFICATION- EMISSIONS	MY2024 ENGINE	0	0
---	---------	-----------------------------	---------------	---	---

SUB TOTALS

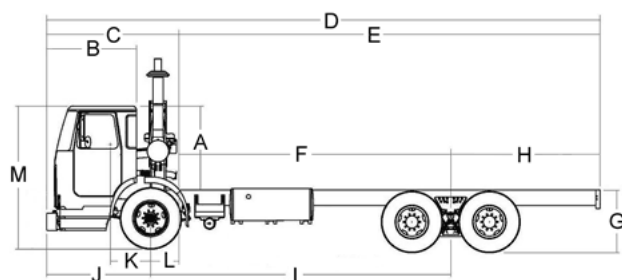
BASE WEIGHT	10,431	6,154
FACTORY OPTION WEIGHT	8	-37
DISTRIBUTOR OPTION WEIGHT	0	0

TOTALS

TOTAL WEIGHT (LB)	10,439	6,117	16,556
-------------------	--------	-------	--------

03/13/2023

Dimensions



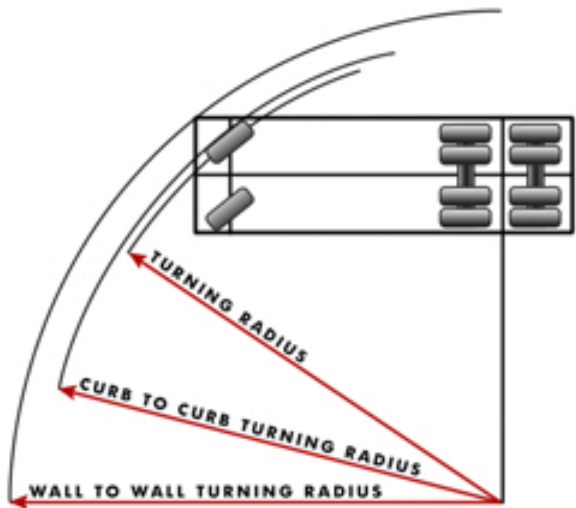
	Dimension(ft)	Description
A	59.00	CAB HEIGHT
B	62.00	BUMPER TO BACK OF CAB
C	95.00	EFFECTIVE BUMPER TO BACK OF CAB
D	385.00	OVERALL LENGTH
E	290.00	EFFECTIVE CAB TO END OF FRAME
F	186.00	EFFECTIVE CAB TO REAR AXLE
G	0.00	UNLADEN FRAME HEIGHT
H	104.00	OVERHANG
I	210.00	WHEELBASE
J	71.00	BUMPER TO FRONT AXLE
K	-24.00	DRIVER CENTER OF GRAVITY
L	24.00	EFFECTIVE FRONT AXLE TO BACK
M	0.00	OVERALL HEIGHT
N	0.00	FRONT FRAME EXTENSION

SPECIFICATION SUMMARY

Model	ACX64 Class 8
Engine	L9, 360HP / 2200RPM / 1150 LB-FT, CUMMINS
Transmission	ALLISON 3000 SERIES, 5-SPEED
Rear Axle	MERITOR MT40-14X W/ .5" HOUSING (40000 LBS)
Rear Axle Ratio	MUST CHOOSE REAR DRIVE AXLE RATIO
Rear Tire	11R22.5H

03/13/2023

Turning Radius



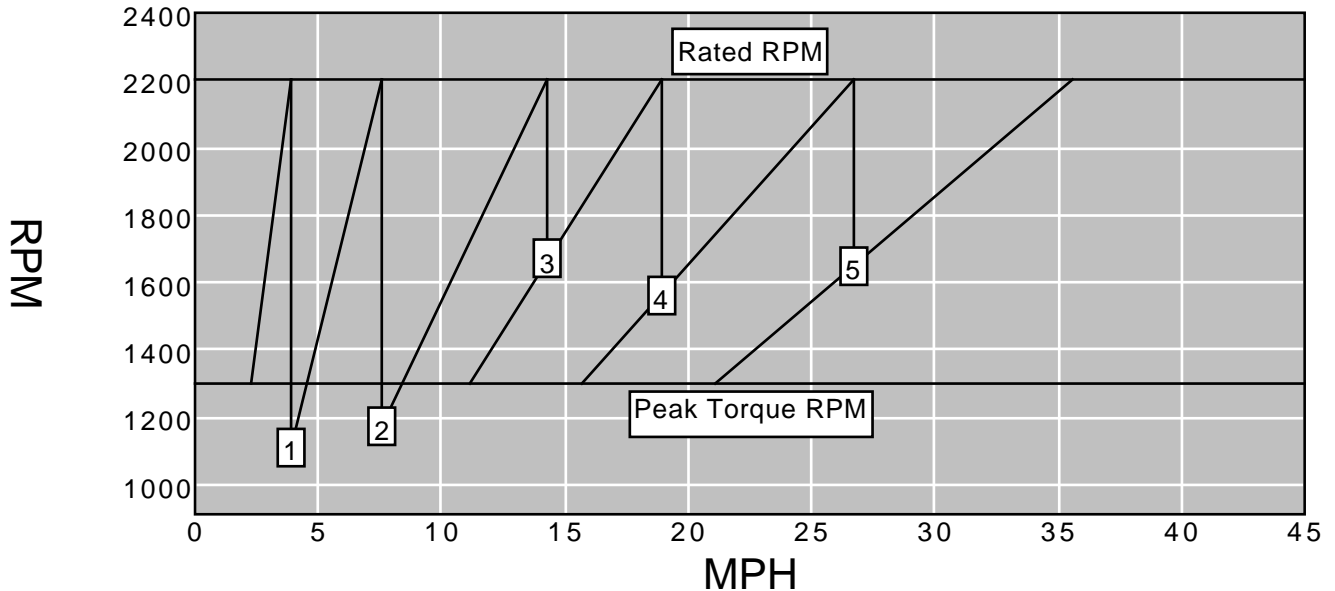
	Dimension(ft)	Description
A	35.37	TURNING RADIUS
B	72.88	CURB TO CURB TURNING DIAMETER
C	79.01	WALL TO WALL TURNING DIAMETER

SPECIFICATION SUMMARY

Model	
Engine	L9, 360HP / 2200RPM / 1150 LB-FT, CUMMINS
Transmission	ALLISON 3000 SERIES, 5-SPEED
Rear Axle	MERITOR MT40-14X W/ .5" HOUSING (40000 LBS)
Rear Axle Ratio	MUST CHOOSE REAR DRIVE AXLE RATIO
Rear Tire	11R22.5H

03/13/2023

Shift Chart



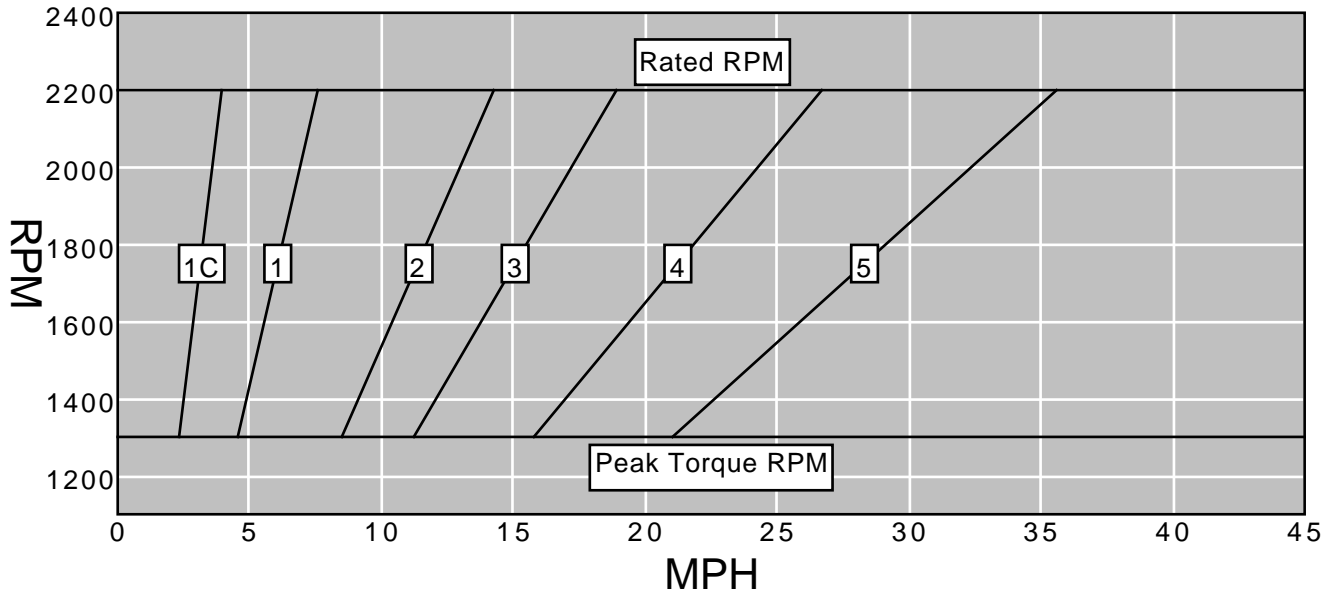
Gear	Trans. Ration	Rear Axle Ration	Overall Reduction	% Split	MPH	RPM After Shift
1C	6.91	9.96	68.8	0.0	3.9	0
1	3.49	9.96	34.8	98.0	7.6	1,111
2	1.86	9.96	18.5	87.6	14.3	1,172
3	1.41	9.96	14.0	31.9	18.9	1,667
4	1.00	9.96	10.0	41.0	26.7	1,560
5	0.75	9.96	7.5	33.3	35.6	1,650

SPECIFICATION SUMMARY

Model	ACX64 Class 8
Engine	L9, 360HP / 2200RPM / 1150 LB-FT, CUMMINS
Rated Power	359 HP @ 2200 RPM
Peak Torque	1150 LB-FT @ 1300
Transmission	ALLISON 3000 SERIES, 5-SPEED
Rear Axle	MERITOR MT40-14X W/ .5" HOUSING (40000 LBS)
Rear Axle Ratio	MUST CHOOSE REAR DRIVE AXLE RATIO
Rear Tire	11R22.5H
Tire Revolution	497

03/13/2023

Operating Range



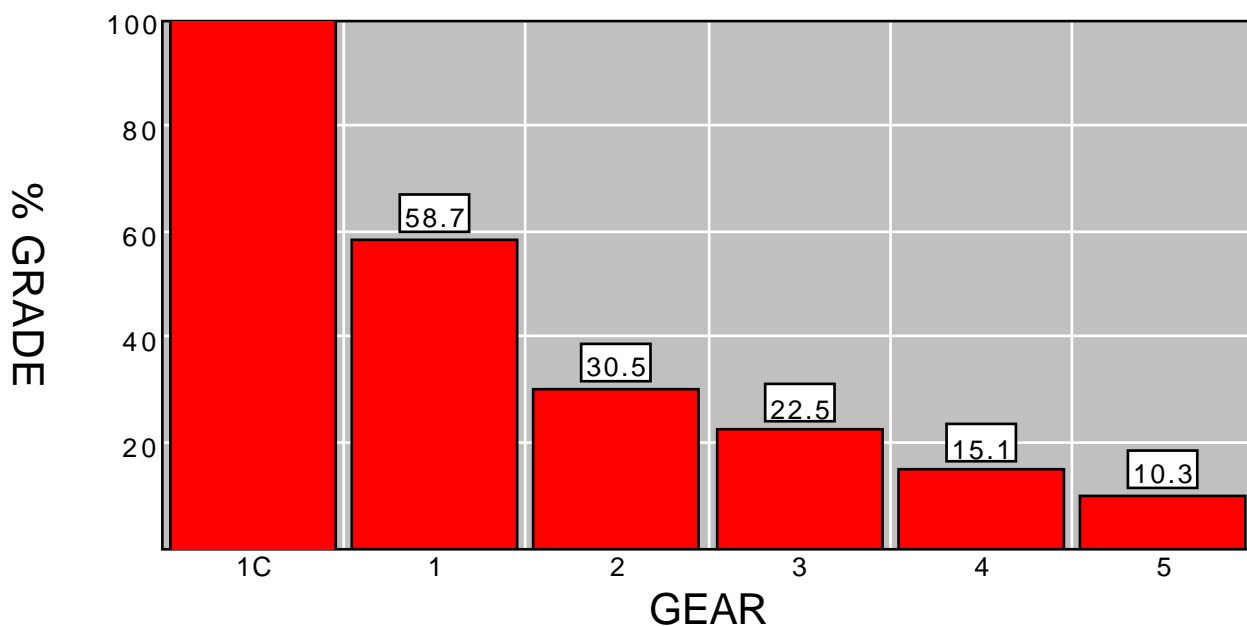
	Gear	Trans. Ratio	Rear Axle Ratio	Minimum MPH	Maximum MPH
	1C	6.91	9.96	2.3	3.9
	1	3.49	9.96	4.5	7.6
	2	1.86	9.96	8.5	14.3
	3	1.41	9.96	11.2	18.9
	4	1.00	9.96	15.8	26.7
	5	0.75	9.96	21.0	35.6

SPECIFICATION SUMMARY

Model	ACX64 Class 8
Engine	L9, 360HP / 2200RPM / 1150 LB-FT, CUMMINS
Rated Power	359 HP @ 2200 RPM
Peak Torque	1150 LB-FT @ 1300
Transmission	ALLISON 3000 SERIES, 5-SPEED
Rear Axle	MERITOR MT40-14X W/ .5" HOUSING (40000 LBS)
Rear Axle Ratio	MUST CHOOSE REAR DRIVE AXLE RATIO
Rear Tire	11R22.5H
Tire Revolution	497

03/13/2023

Gradeability



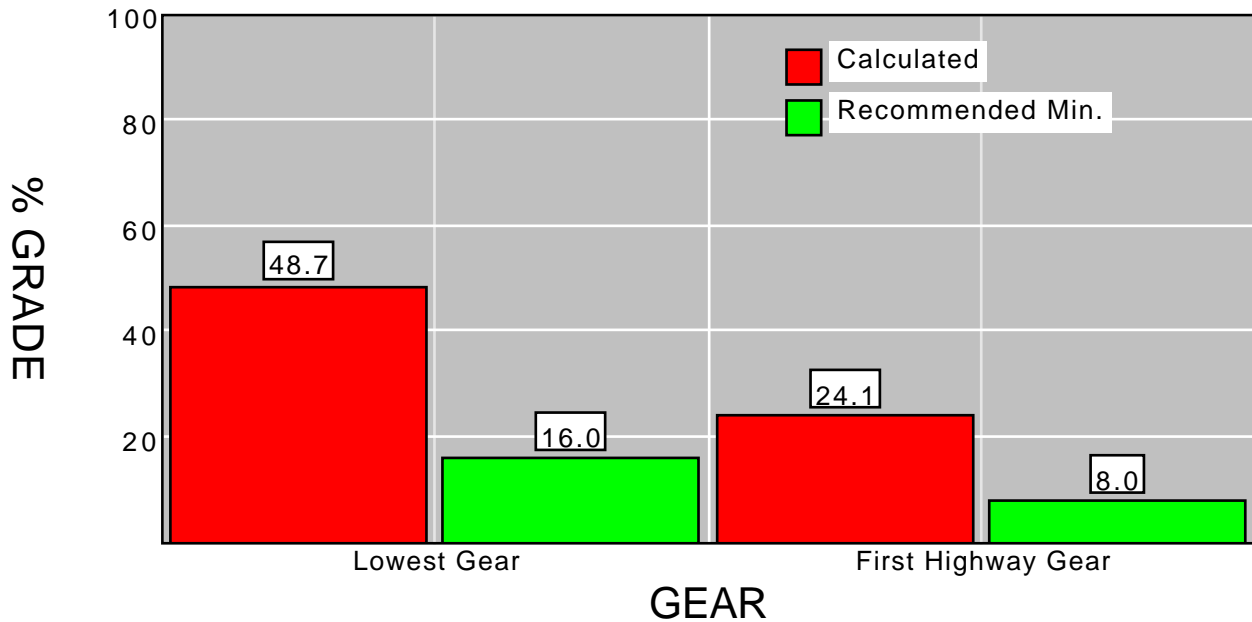
Gear	Trans. Ratio	Rear Axle Ratio	Overall Reduction	Peak Torque	Wheel HP	MPH	Maximum Grade%
1C	6.91	9.96	68.8	1,150.0	286.8	2.3	117.3
1	3.49	9.96	34.8	1,150.0	286.8	4.5	58.7
2	1.86	9.96	18.5	1,150.0	286.8	8.5	30.5
3	1.41	9.96	14.0	1,150.0	286.8	11.2	22.5
4	1.00	9.96	10.0	1,150.0	286.8	15.8	15.1
5	0.75	9.96	7.5	1,150.0	286.8	21.0	10.3

SPECIFICATION SUMMARY

Model	ACX64 Class 8
Engine	L9, 360HP / 2200RPM / 1150 LB-FT, CUMMINS
Peak Torque	1150 LB-FT @ 1300
Transmission	ALLISON 3000 SERIES, 5-SPEED
Rear Axle	MERITOR MT40-14X W/ .5" HOUSING (40000 LBS)
Rear Axle Ratio	MUST CHOOSE REAR DRIVE AXLE RATIO
Rear Tire	11R22.5H
Tire Revolution	497
GVW/GCV	0
Surface	Concrete

03/13/2023

Startability



Gear	Application	Recommended Minimum Grade %	Calculated Grade %
Lowest Gear	City	12.0	n/a
	On Highway	16.0	48.7
	On-Off Highway	18.0	n/a
	Off Highway	20.0	n/a
First Highway Gear	All Applications	8.0	24.1

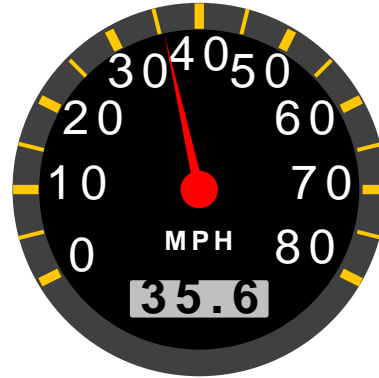
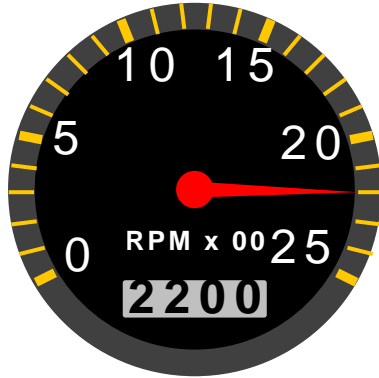
"SPECIFICATION SUMMARY"

Model	ACX64 Class 8
Engine	L9, 360HP / 2200RPM / 1150 LB-FT, CUMMINS
Clutch Torque	549 LB-FT 700 RPM
Transmission	ALLISON 3000 SERIES, 5-SPEED
Rear Axle	MERITOR MT40-14X W/ .5" HOUSING (40000 LBS)
Rear Axle Ratio	MUST CHOOSE REAR DRIVE AXLE RATIO
Rear Tire	11R22.5H
Tire Radius	19.4
GVW/GCV	0
Surface	Concrete
Terrain	On Highway

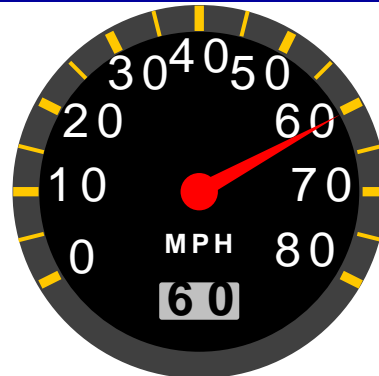
03/13/2023

Top Speed

Speed At Maximum RPM



RPM At 60MPH



	MPH	RPM
Top Speed	35.6	2,200
Cruise Speed	60.0	3,712
Minimum Of Engine Range	11.3	700
Maximum Of Engine Range	35.6	2,200
Minimum Of Economy Range	11.3	700
Maximum Of Economy Range	32.3	2,000

SPECIFICATION SUMMARY

Model	ACX64 Class 8
Engine	L9, 360HP / 2200RPM / 1150 LB-FT, CUMMINS
Transmission	ALLISON 3000 SERIES, 5-SPEED
Rear Axle	MERITOR MT40-14X W/ .5" HOUSING (40000 LBS)
Rear Axle Ratio	MUST CHOOSE REAR DRIVE AXLE RATIO
Rear Tire	11R22.5H
Tire Revolution	497

03/13/2023

GAWR, GVWR & Tire Pressure

GVW Rating – 60,000#			
Front GAWR	20,000#	Rear GAWR	40,000#
Front Suspension	20,800#	Rear Suspension	40,000#
Front Wheels	20,000#	Rear Wheels	59,100#
Front Tire Size And Tread	20,000#	Rear Tire Size And Tread	48,000#
Front Brakes	20,000#	Rear Brakes	52,000#
Front Axle	20,000#	Rear Axle	40,000#
PSI			
Front PSI	130.0	Rear PSI	110.0