

ACTT64 Class 8 Model Year 2024

Vanguard Truck Center of Charlotte
NA

Prepared By : Mark Hughel
704-597-4212
Mark.Hughel@vanguardtrucks.com

Prepared For : KAYLYN MITMAN
NORTH CAROLINA SHERIFF'S
ASSOCIATION

Monday, March 13, 2023 11:35:14 AM EST

03/13/2023

Chassis Specification

		Description	Front Weight	Rear Weight	
AUTOCAR TRUCKS					
S	0040006	MODELS	ACTT64	10,000	5,000
S	5000005	CAB SHELL	ACTT SINGLE CAB	0	0
X	100T98	CUSTOMER LAYOUT	NONE	0	0
S	680004	NAME PLATES,STD	AUTOCAR	0	0
SOLUTION					
S	C00000	TRUCK TYPE	CUSTOM TRUCK	0	0
S	C010010	APPLICATION	TERMINAL TRACTOR - DISTRIBUTION	0	0
S	D010132	FRONT GAWR	13200 LBS	0	0
S	D020400	REAR GAWR	40000 LBS	0	0
S	D110800	GCWR	80,000 LBS	0	0
VEHICLE ADAPTATION					
O	114010	COUNTRY OF USE	UNITED STATES STD MARKET ADAPTATION	0	0
ENGINE					
S	1580003	ENGINE VOCATION	OFF-HIGHWAY - NORTH AMERICA	0	0
S	1015000	ENGINE ASSY	QSBT4f 146HP @ 2100RPM / 620 LB-FT @1500RPM, CUMMINS	0	0
S	102146	ENGINE HORSEPOWER RATING	146 HORSE POWER	0	0
S	972A210	SPECIAL EMISSION CERTIFICATION LABELS	OFF ROAD T4 EMISSION	0	0
S	9725000	CERTIFICATION- EMISSIONS	COMPLIES WITH OFFROAD TIER 4F EMISSIONS	0	0
ENGINE EQUIP					
S	1290004	ENGINE ELECTRONICS	CUMMINS 500K COMMUNICATION	0	0
S	P010025	VEHICLE GOVERNED SPEED LIMIT	SPEED LIMIT 25MPH	0	0
S	P020002	ENGINE IDLE SHUT DOWN	ENGINE IDLE SHUT DOWN DISABLED	0	0
X	1325004	ENGINE PROTECT SYSTEM/WARNINGS	AUDIBLE/VISUAL ALARM/LOP, HT, LWL W/SHUTDOWN	0	0
X	4385001	FILTER-FUEL, CHASSIS MOUNTED	FLEETGUARD FS SERIES F/W SEP W/PROBE & DASH LIGHT	0	0

S	1700003	FILTER-FUEL, ENGINE MOUNTED	SPIN-ON, ENGINE MOUNTED	0	0
S	1750001	ENGINE OIL	STANDARD ENGINE OIL	0	0
S	2005000	RADIATOR	850 SQ. IN. CAPACITY	0	0
S	204002	COOLANT HOSES	SILICONE HOSES WITH STEEL TUBING	0	0
S	2080002	FAN & DRIVE-ENGINE	FAN, DIRECT DRIVE	0	0
S	2090001	RADIATOR COOLANT	EXTENDED LIFE COOLANT	0	0
S	2120003	RADIATOR SURGE TANK	STANDARD SURGE TANK W/ SIGHT GLASS	0	0
S	2200006	AIR CLEANER	11" TWO STAGE	0	0
S	2305000	MUFFLER SYSTEM	VERTICAL DOC W/ HORIZONTAL SCR	0	0
S	2310003	EXHAUST SHIELDS	SHIELDS, DPF & SCR	0	0
S	2325000	EXHAUST STACKS	STAINLESS STL STACK W/TURN OUT HEIGHT TO MATCH CAB ROOF	0	0
S	236002	MUFFLER SUPPORT	FRAME MOUNTED	0	0
S	2395002	UREA DELIVERY SYSTEM	FRAME MOUNTED, 6 GAL CAPACITY	0	0
S	700026	AIR COMPRESSOR	CUMMINS WABCO 18.7 CFM COMPRESSOR	0	0
S	8025000	ALTERNATOR	DELCO REMY 160 AMP, 28SI PAD MTD W/REMOTE SENSE	0	0
S	8055001	DI-ELECTRIC GREASE	ELECTRICAL RING/POST CORROSION INHIBITOR	0	0
S	8105006	BATTERY	2 BATTERIES, 31ECL, 12V 1500CCA	0	0
S	8205002	STARTING MOTOR	DELCO REMY 12V 31MT	0	0
TRANSMISSION					
S	2690005	CONTROL MODULE (ELECT)	UTILITY, YARD TRACTOR, GRP99, VP113	0	0
S	PT10001	TRANS DIRECTION CHANGE SHIFT INHIBIT	SHIFT INHIBIT ENABLED	0	0
S	2700020	TRANSMISSION	ALLISON 3000 SERIES, 4-SPEED	0	0
S	284016	TRANSMISSION CONTROLS	ALLISON PUSHBUTTON CONTROLS	0	0
S	286005	COOLER-TRANSMISSION OIL	OIL TO WATER TYPE	0	0
S	290003	TRANSMISSION OIL FILL/CHECK	OIL FILL TUBE / DIPSTICK W/ LEVEL SENSOR	0	0
S	292004	TRANSMISSION LUBRICANT	TRANSYND SYNTHETIC AUTO TRANS FLUID	0	0
S	300015	DRIVESHAFT-MAIN	SPICER 1710HD HALF ROUND	0	0

FRONT AXLE

S	3700005	FRONT AXLE	MERITOR MFS-14 STEER AXLE, 14700# RATING	0	0
S	371007	FRONT SUSPENSION	6500 LB FLATLEAF 14,500 GROUND CAPACITY	0	0
S	373002	SHOCK ABSORBERS- FRONT	DOUBLE ACTING SINGLE - HEAVY DUTY	0	0
S	374002	FRONT AXLE LUBRICANT	SYNTHETIC,DANA SPICER EP75W90,OR EQUIV	0	0
S	3835001	STEERING GEAR	M100 LOW SPEED GEAR	0	0
S	384009	POWER STEERING PUMP	STANDARD P/S PUMP	0	0
S	3870001	POWER STEERING RESERVOIR	INTEGRAL WITH FIFTH WHEEL RESERVOIR	0	0

REAR AXLE

S	3300040	REAR DRIVE AXLE-SINGLE & TANDEM	MERITOR MT40 - 14X	0	0
S	330H001	REAR DRIVE AXLE-SINGLE & TANDEM	STANDARD TRACK	0	0
S	331717	REAR DRIVE AXLE RATIO	7.17	0	0
S	339002	REAR AXLE LUBRICANT	SYNTHETIC	0	0
S	3400001	REAR AXLE BREATHER	STANDARD AXLE BREATHER	0	0
S	350298	REAR SUSPENSION	HENDRICKSON HN-460 46000# CAP; 54" SP	0	0
S	351013	REAR SUSPENSION BEAMS	54 INCH STEEL RUBBER BUSHED	0	0
S	358005	TORQUE RODS	LONGITUDINAL & TRANSVERSE - RUBBER BUSHED	0	0

BRAKES

S	7415001	BRAKE CONTROL SYSTEM	FMVSS EXEMPT BRAKE SYSTEM	0	0
S	782018	BRAKE VALVE-PARKING CONTROL	TRAILER/TRACTOR PARK AND SUPPLY VALVE	0	0
S	753018	BRAKE CHAMBERS-FRONT AXLE	CAM-STANDARD	0	0
S	754009	BRAKE SLACK ADJUSTERS -FRONT AXLE	MERITOR AUTOMATIC	0	0
S	755001	DUST SHIELDS - FRT BRAKES	DUST SHIELDS - FRONT BRAKES	0	0
S	901001	BRAKE DRUM-FRONT	CAST IRON	0	0
S	7610003	BRAKES-FOUNDATION, REAR AXLE	MERITOR 16.5X7 Q PLUS	0	0
S	763019	BRAKE CHAMBERS-REAR AXLE	CAM-STANDARD	0	0
S	764013	BRAKE SLACK ADJUSTERS -REAR AXLE	ARVIN MERITOR AUTOMATIC,TANDEM AXLE	0	0
S	765001	DUST SHIELDS - REAR BRAKES	DUST SHIELDS - REAR BRAKES	0	0

S	781012	BRAKE CHAMBERS- PARKING, TYPE/VENDOR	CAM TYPE MGM STOPGARD (4)	0	0
S	910001	BRAKE DRUM-REAR	CAST IRON	0	0

CHASSIS

S	400146	WHEELBASE	146 INCHES	0	0
S	402056	FRAME-REAR OVERHANG	56"	0	0
S	4030003	FRAME RAILS	3/8" X 13 STRAIGHT STEEL,"C"-REINFORCED, 50KSI	0	0
S	3250001	HYDRAULIC TANK	15 GAL STEEL	0	0
S	4060004	FRAME-REAR CUT-OFF	TAPER CUT-OFF, 23 DEGREES	0	0
S	3265000	HYDRAULIC FILTER	HYDAC 38GPM IN TANK FILTER	0	0
S	4090002	FRAME CROSSMEMBER- CENTER	STEEL	0	0
S	411005	FRAME CROSSMEMBER- END CLOSING	TAPER STEEL	0	0
S	4300007	FUEL TANK-LEFT	50 GAL 18" RECT STEEL W/ DEEP STEP	0	0
S	432002	FUEL TANK STRAP/ SUPPORT LEFT	PAINTED STEEL	0	0
S	435001	FUEL TANK OVERFLOW PIPE	STANDARD VENT	0	0
S	436001	FUEL LINES	SAE J844 NYLON TUBING	0	0
S	4520001	REAR DECK	STANDARD REAR DECK	0	0
S	4530001	STEP-BOC ACCESS	LH ONLY ACCESS STEPS	0	0
S	4600005	BUMPER-FRONT	FRONT BUMPER, DISTRIBUTION	0	0
S	4800001	TOWING DEVICE-FRONT	FRONT TOW EYES	0	0
S	4810001	TOWING HOOKS-REAR	REAR TOW EYES	0	0
S	4905004	FIFTH WHEEL	HOLLAND FW35TT (80,000 LBS) 16" LIFT	0	0
S	49B5001	BOOM PIVOT	VESCONITE	0	0
S	7110001	AIR TANK-BRAKE	STEEL AIR TANKS	0	0
S	711U98	AIR TANK MOUNTING	AIR TANKS IN STD POSITION	0	0
S	715001	WET TANK DRAIN	MANUAL TYPE PETCOCK	0	0
S	715T001	AIR RESERVOIR DRAIN SYSTEM	PETCOCK, ALL TANKS	0	0
S	724001	AIR LINES-CAB	SAE J844 NYLON TUBING	0	0
S	728001	AIR LINES-MAIN, CHASSIS	SAE J844 NYLON TUBING	0	0
S	8120011	BATTERY BOX	BATTERY BOX, 2 BATTERY CAPACITY	0	0
S	812S500	BATTERY ISOLATION PAD	BATTERY INSULATION PAD, WOOD	0	0
S	8920002	BACKUP ALARM	BACKUP ALARM	0	0
S	32M5000	HYDRAULIC SYSTEM OIL	TRANSYND ATF	0	0

CAB EXTERIOR

S	4510004	STEP-CAB ACCESS, CAB MOUNTED	LH ONLY CAB ENTRANCE STEPS	0	0
S	5020004	CAB DOORS	LH STANDARD DOOR W/ ALUMINUM SLIDING REAR DOOR	0	0
S	5185000	CAB SLIDING DOOR	ALUM REAR SLIDING DOOR	0	0
S	5100004	GLASS	WINDSHIELD - TEMPERED, ALL GLASS TINTED	0	0
S	51A0001	REAR WINDOW AND SLIDING DOOR GLASS	REAR CAB GLASS, TEMPERED	0	0
S	51B0001	CURB SIDE REAR WINDOW	RIGHT SIDE REAR WINDOW, TEMPERED GLASS	0	0
S	622001	MIRRORS-DUAL WEST COAST	BLACK PAINTED	0	0
S	624012	GRAB HANDLES-ENTRY	STANDARD - MEETS FMCSR 399 REQUIREMENTS	0	0
S	631001	HORN-ELECTRIC	SINGLE	0	0
S	6615005	CAB TILT MECHANISM-C.O.E.	HYDRAULIC TILT W/ ELECTRIC ASSIST, REMOTE SWITCH AND YELLOW SAFETY BAR	0	0
S	6620002	CAB LATCH/HOLDDOWN-C.O.E.	4 POINT CAB MOUNTING, REAR AIR BAG W/HYDRAULIC LATCH	0	0
S	6720007	GRILLE	ACTT STANDARD GRILLE	0	0
S	51C5002	CURB SIDE WINDOW	FORWARD SLIDING WINDOW	0	0

CAB INTERIOR

S	1135018	CAB INTERIOR ENHANCEMENTS	ACTT MY2021 INTERIOR WITH ADVANCED DISPLAY	0	0
S	380003	STEERING WHEEL	18" DIA. WHEEL	0	0
S	381001	STEERING COLUMN	FIXED POSITION	0	0
S	5200011	SEAT-DRIVER	SEATS INC MID BACK AIR RIDE W/O ISOLATOR , HERITAGE SILVER	0	0
S	5220004	SEAT BELTS-DRIVER	TWO POINT LAP BELT, BLACK	0	0
S	5265005	SEAT INSERT	BLACK CELDURA CLOTH	0	0
S	538001	CARPET & MAT	MAT WITH FOAM BACK	0	0
S	5400002	CAB PANELS-INTERIOR TRIM	ACTT STANDARD INTERIOR TRIM	0	0
S	5945000	CIGAR LIGHTER	POWER PORT AND TWO USB PORTS	0	0
S	8640002	LAMPS-CAB INTERIOR	LED DOME LIGHT W/DASH SWITCH	0	0

CAB CLIMATE CONTROL

S	0605001	CAB TEMPERATURE SYSTEM	INTEGRAL HVAC W/ DEFROST	0	0
---	---------	-------------------------------	--------------------------	---	---

GAUGES & INSTRUMENTATION

S	0575003	INSTRUMENTS SALES PKG	ACTT CLUSTER GAUGE PACKAGE	0	0
S	1445000	DRIVER INFORMATION CENTER	INFORMATION DISPLAY	0	0
S	1360001	TACHOMETER/RPM TACHOGRAPH	ELECTRONIC TACHOMETER WITH HOURMETER	0	0
S	137003	GAUGE-HOURMETER	ELECTRIC, DASH MOUNTED	0	0
S	1380001	GAUGE-ENGINE OIL PRESSURE	ELECTRONIC ENGINE OIL PRESSURE	0	0
S	1400001	GAUGE-ENGINE COOLANT TEMPERATURE	ELECTRONIC ENGINE COOLANT TEMP.	0	0
S	2250002	AIR INTAKE RESTRICTION INDICATOR	GRADUATED, MTD UNDER HOOD, NO WARNING LAMP	0	0
S	288009	MONITORING - TRANSMISSION OIL TEMP	TRANS TEMP WARNING LIGHT & BUZZER	0	0
S	337001	INTERAXLE DIFFERENTIAL LOCKOUT CONTROLS	DASH MOUNTED WARNING LIGHT & CONTROL	0	0
S	4930003	FIFTH WHEEL CONTROL	CAB CONTROL, CABLE	0	0
S	5770001	SPEEDOMETER/ODOMETE R	ELECTRONIC WITH ODOMETER	0	0
S	804001	VOLTMETER/AMMETER	VOLTMETER	0	0
S	1472001	VEHICLE MONITORING SYSTEM	AUTOCAR ADVANCED TELEMATICS-FULL INSTALLATION	0	0
S	493T500	FIFTH WHEEL CONTROL W/ DUST SEAL	FIFTH WHEEL CONTROL W/ SEAL	0	0

LIGHTING

S	8360002	LAMPS-HEAD	HEADLAMP, RECTANGULAR SEALED BEAM	0	0
S	837011	LAMPS-STOP-TAIL	LED, DUAL, TRUCKLITE MODEL 44	0	0
S	8380005	LAMPS-BACKUP	BACK-UP LAMPS, SINGLE OVAL	0	0
S	844016	SWITCH-TURN SIGNAL & FLASHER	NON-CANCELLING W/TRANSISTORIZED FLASHER	0	0
S	860004	LAMPS-BACK OF CAB	RECESSED BOC, SPOTTING LIGHT	0	0

RADIO/MISC

S	509002	KEY & LOCK SETS-IGN/DOORS	DOOR & IGNITION SAME - SAME FOR FLEET	0	0
S	6280006	WINDSHIELD WIPER	SINGLE PANTOGRAPH W/O WASHER	0	0

S	8735000	WIRING-CAB	DASH MOUNTED FUSE PANEL, STD CAB WIRING	0	0
---	---------	-------------------	--	---	---

FRONT TIRES / WHEELS

S	9210001	HUB CAPS - FRONT AXLE	CR ZYTEL HUBCAP	0	0
S	9400001	WHEEL OIL SEALS-FRONT	SCOTSEAL PLUS XL	0	0
S	904011	HUBS-FRONT	STEEL HUB PILOTED,285MM BOLT CIRCLE	0	0
S	9050014	WHEELS-DISC FRONT	22.5x8.25" STEEL HP, 6.18" INSET, 5HH	0	0
S	905V500	FRONT TIRE VALVE STEMS/CAPS	STANDARD STEM/CAP	0	0
S	930100	TIRE SIZE & LOAD RANGE - FRONT	295/75R22.5G	0	0
S	9310060	TIRE MANUFACTURER & TREAD - FRONT	DOUBLE COIN RR680	0	0

REAR TIRES / WHEELS

S	9130001	HUBS-REAR	IRON HUB, HP 10 STUD	0	0
S	9140014	WHEELS-DISC REAR	22.5X8.25" STEEL, HP, 5HH	0	0
S	914V500	REAR TIRE VALVE STEMS/CAPS	STANDARD STEM/CAP	0	0
S	933100	TIRE SIZE & LOAD RANGE - REAR	295/75R22.5G	0	0
S	9340060	TIRE MANUFACTURER & TREAD - REAR	DOUBLE COIN RR680	0	0
S	9410001	WHEEL OIL SEALS-REAR	SCOTSEAL PLUS XL	0	0

PAINT

S	950001	CAB PAINT SCHEME	SINGLE COLOR PAINT	0	0
S	9520001	PAINT SCHEME- ADDITIONAL	SAFETY YELLOW PAINT - STEPS, DECKING AND GRAB HANDLES	0	0
S	9550001	CAB PAINT TYPE	STANDARD WHITE	0	0
S	9801001	CAB COLOR-FIRST	APPROVED---DPSS-N0007--- STANDARD WHITE N0007	0	0
S	9861U1	CHASSIS COLOR	BLACK P3036	0	0
O	9875001	BUMPER COLOR	BUMPER COLOR BLACK P3036	0	0
S	9885002	DISC WHEEL OR RIM COLOR	POWDER COAT WHITE	0	0

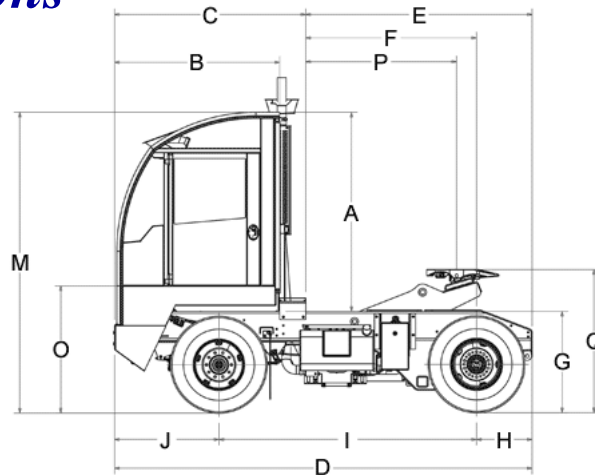
ADDITIONAL OPTIONS

S	8990008	CHASSIS WARRANTY	STANDARD ACTT WARRANTY	0	0
S	899A500	TRANSMISSION WARRANTY	ALLISON 3YR WARRANTY	0	0
S	899B001	ENGINE WARRANTY	CUMMINS STANDARD WARRANTY	0	0

S	978000	FLOOR PLAN	NO FLOORING PLAN	0	0
OTHERS					
S	133003	ACCELERATOR PEDAL & LINK	WILLIAMS ACCELERATOR	0	0
S	488460	FIFTH WHEEL HEIGHT	FIFTH WHEEL NOMINAL HEIGHT 46"	0	0
S	6605003	CAB MOUNTS	NEOPRENE CAB PIVOT BUSHINGS	0	0
S	720002	BRAKE VALVE & PEDAL	FLOOR MOUNTED PEDAL - STANDARD	0	0
S	740003	CERTIFICATION COMPLIANCE	US SALE-US COMMERCE-UNDER 34 MPH	0	0
S	7930005	TRAILER AIR HOSES	15' RUBBER AIR HOSES W/ SPRING HANGER SUPPORT	0	0
S	7950001	TRAILER HOSE HANGERS & SUPPORTS	TRAILER HOSE HANGERS & SUPPORTS	0	0
S	822001	STARTING SWITCH	STANDARD	0	0
S	8905003	TRAILER CABLE RECEPTACLE	TRAILER CABLE RECEPTACLE W/ ISOLATED CIRCUIT CONNECTIONS	0	0
S	9725000	CERTIFICATION-EMISSIONS	COMPLIES WITH OFFROAD TIER 4F EMISSIONS	0	0
O	9740001	CERTIFICATION-EXTERIOR NOISE	INDUSTRIAL / NON-REGULATED EXPORT, NO CERT. REQ'D	0	0
SUB TOTALS					
			BASE WEIGHT	10,000	5,000
			FACTORY OPTION WEIGHT	0	0
			DISTRIBUTOR OPTION WEIGHT	0	0
TOTALS					
			TOTAL WEIGHT (LB)	10,000	5,000
					15,000

03/13/2023

Dimensions



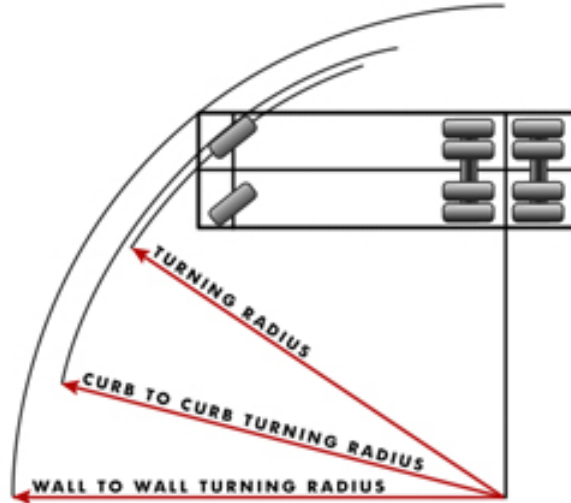
	Dimension(ft)	Description
A	89.50	CAB HEIGHT
B	76.50	BUMPER TO BACK OF CAB
C	0.00	EFFECTIVE BUMPER TO BACK OF CAB
D	251.00	OVERALL LENGTH
E	0.00	EFFECTIVE CAB TO END OF FRAME
F	0.00	EFFECTIVE CAB TO REAR AXLE
G	42.80	UNLADEN FRAME HEIGHT
H	56.00	OVERHANG
I	146.00	WHEELBASE
J	49.00	BUMPER TO FRONT AXLE
M	132.30	OVERALL HEIGHT
O	53.80	FLOOR HEIGHT
P	101.00	EFFECTIVE BACK OF CAB TO KING PIN
Q	58.80	GROUND TO TOP OF 5TH WHEEL (RAISED)
Q	45.30	GROUND TO TOP OF 5TH WHEEL (LOWERED)

SPECIFICATION SUMMARY

Model	ACTT64 Class 8
Engine	QSBT4f 146HP @ 2100RPM / 620 LB-FT @1500RPM, CUMMINS
Transmission	ALLISON 3000 SERIES, 4-SPEED
Rear Axle	MERITOR MT40 - 14X
Rear Axle Ratio	7.17
Rear Tire	295/75R22.5G

03/13/2023

Turning Radius



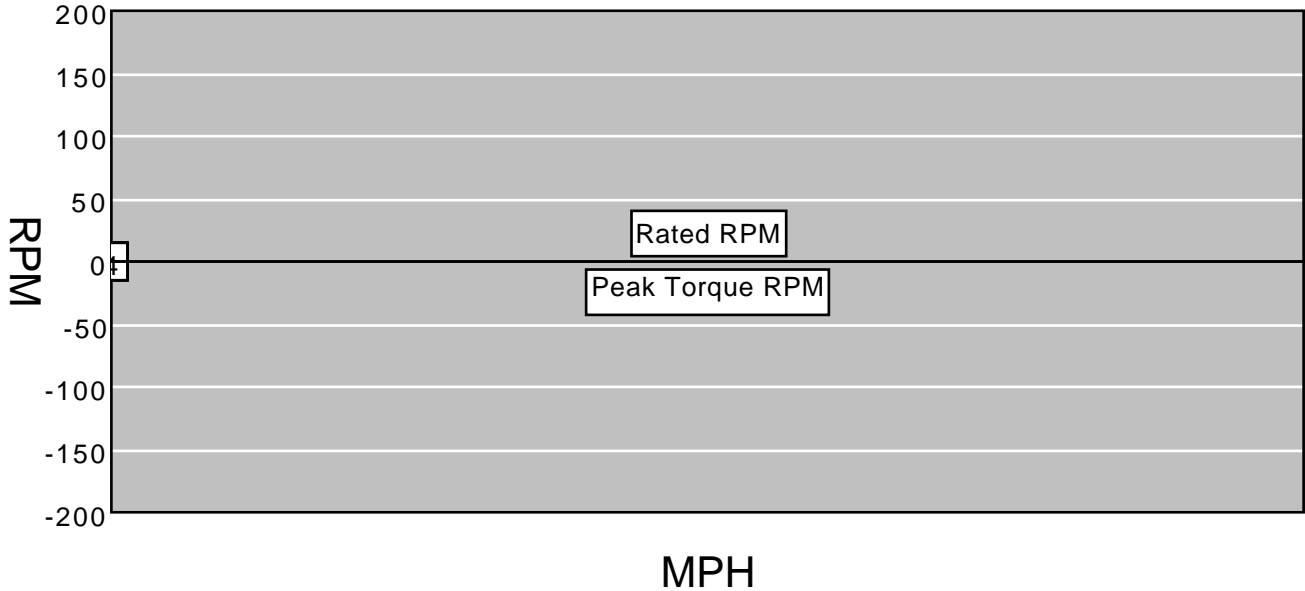
	Dimension(ft)	Description
A	25.60	TURNING RADIUS
B	53.15	CURB TO CURB TURNING DIAMETER
C	55.99	WALL TO WALL TURNING DIAMETER

SPECIFICATION SUMMARY

Model	
Engine	QSBT4f 146HP @ 2100RPM / 620 LB-FT @ 1500RPM, CUMMINS
Transmission	ALLISON 3000 SERIES, 4-SPEED
Rear Axle	MERITOR MT40 - 14X
Rear Axle Ratio	7.17
Rear Tire	295/75R22.5G

03/13/2023

Shift Chart



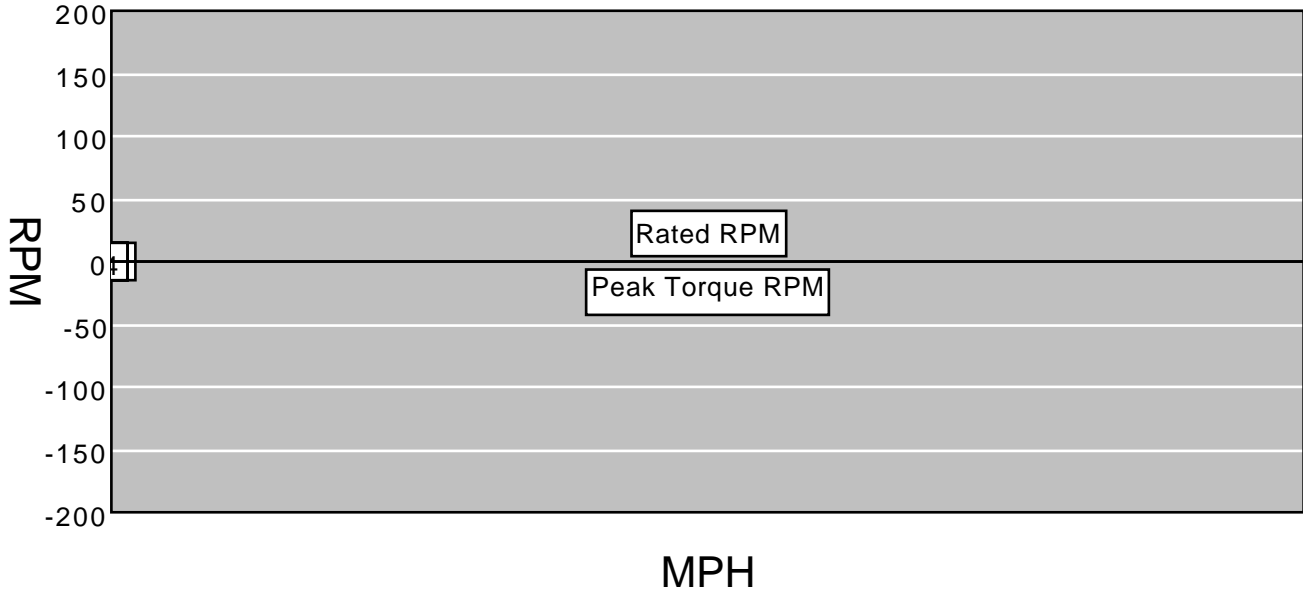
Gear	Trans. Ration	Rear Axle Ration	Overall Reduction	% Split	MPH	RPM After Shift
1C	5.06	7.17	36.3	0.0	0.0	0
1	3.49	7.17	25.0	45.0	0.0	0
2	1.86	7.17	13.3	87.6	0.0	0
3	1.41	7.17	10.1	31.9	0.0	0
4	1.00	7.17	7.2	41.0	0.0	0

SPECIFICATION SUMMARY

Model	ACTT64 Class 8
Engine	QSBT4f 146HP @ 2100RPM / 620 LB-FT @ 1500RPM, CUMMINS
Rated Power	0 HP @ 0 RPM
Peak Torque	0 LB-FT @ 0
Transmission	ALLISON 3000 SERIES, 4-SPEED
Rear Axle	MERITOR MT40 - 14X
Rear Axle Ratio	7.17
Rear Tire	295/75R22.5G
Tire Revolution	504

03/13/2023

Operating Range



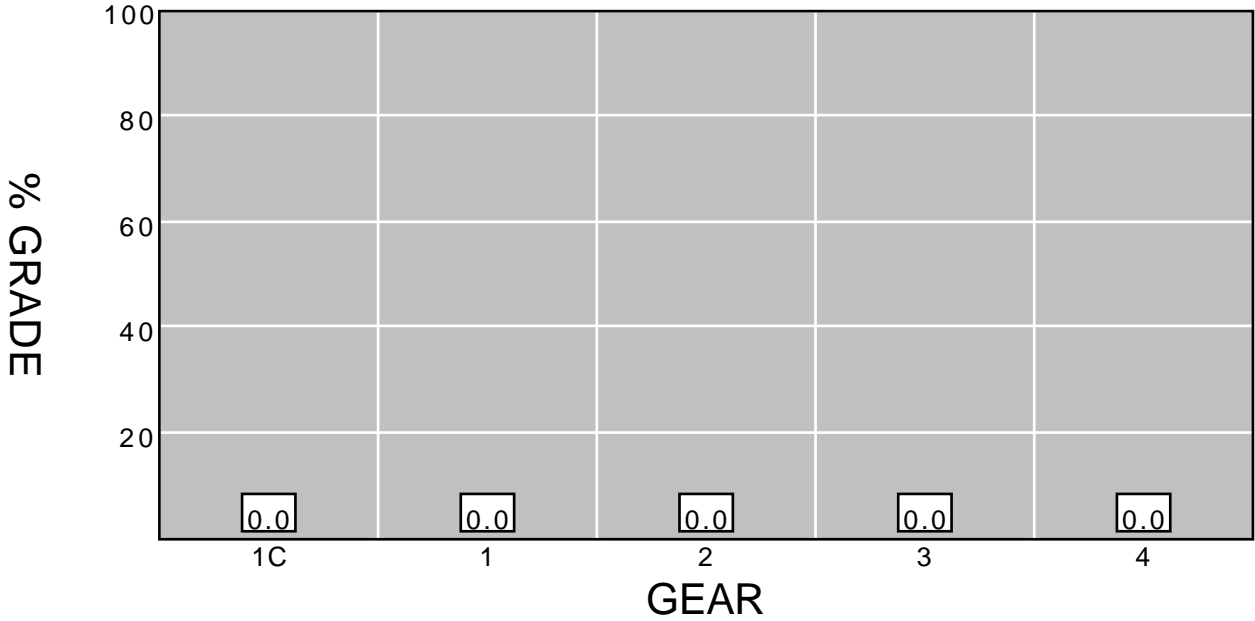
	Gear	Trans. Ratio	Rear Axle Ratio	Minimum MPH	Maximum MPH
	1C	5.06	7.17	0.0	0.0
	1	3.49	7.17	0.0	0.0
	2	1.86	7.17	0.0	0.0
	3	1.41	7.17	0.0	0.0
	4	1.00	7.17	0.0	0.0

SPECIFICATION SUMMARY

Model	ACTT64 Class 8
Engine	QSBT4f 146HP @ 2100RPM / 620 LB-FT @ 1500RPM, CUMMINS
Rated Power	0 HP @ 0 RPM
Peak Torque	0 LB-FT @ 0
Transmission	ALLISON 3000 SERIES, 4-SPEED
Rear Axle	MERITOR MT40 - 14X
Rear Axle Ratio	7.17
Rear Tire	295/75R22.5G
Tire Revolution	504

03/13/2023

Gradeability



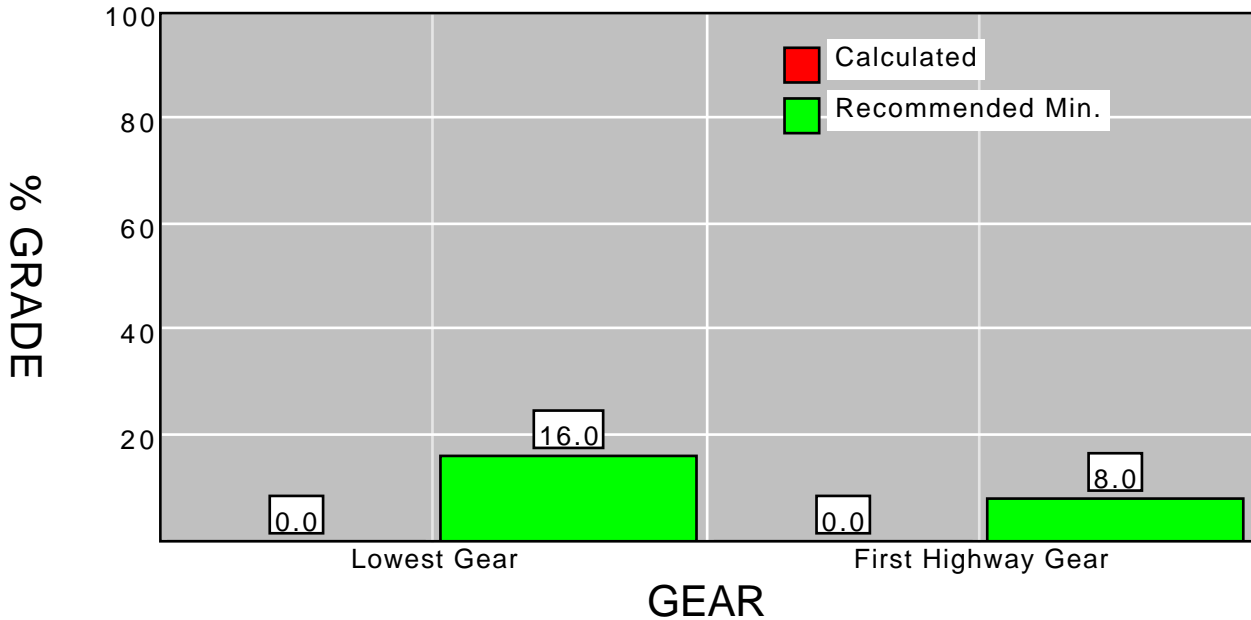
Gear	Trans. Ratio	Rear Axle Ratio	Overall Reduction	Peak Torque	Wheel HP	MPH	Maximum Grade%
1C	5.06	7.17	36.3	0.0	0.0	0.0	0.0
1	3.49	7.17	25.0	0.0	0.0	0.0	0.0
2	1.86	7.17	13.3	0.0	0.0	0.0	0.0
3	1.41	7.17	10.1	0.0	0.0	0.0	0.0
4	1.00	7.17	7.2	0.0	0.0	0.0	0.0

SPECIFICATION SUMMARY

Model	ACTT64 Class 8
Engine	QSBT4f 146HP @ 2100RPM / 620 LB-FT @ 1500RPM, CUMMINS
Peak Torque	0 LB-FT @ 0
Transmission	ALLISON 3000 SERIES, 4-SPEED
Rear Axle	MERITOR MT40 - 14X
Rear Axle Ratio	7.17
Rear Tire	295/75R22.5G
Tire Revolution	504
GVW/GCV	0
Surface	Concrete

03/13/2023

Startability



Gear	Application	Recommended Minimum Grade %	Calculated Grade %
Lowest Gear	City	12.0	n/a
	On Highway	16.0	n/a
	On-Off Highway	18.0	n/a
	Off Highway	20.0	n/a
			0.0
First Highway Gear	All Applications	8.0	n/a

"SPECIFICATION SUMMARY"

Model	ACTT64 Class 8
Engine	QSBT4f 146HP @ 2100RPM / 620 LB-FT @ 1500RPM, CUMMINS
Clutch Torque	0 LB-FT 0 RPM
Transmission	ALLISON 3000 SERIES, 4-SPEED
Rear Axle	MERITOR MT40 - 14X
Rear Axle Ratio	7.17
Rear Tire	295/75R22.5G
Tire Radius	19.5
GVW/GCV	0
Surface	Concrete
Terrain	On Highway

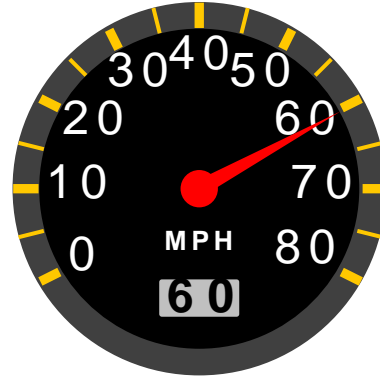
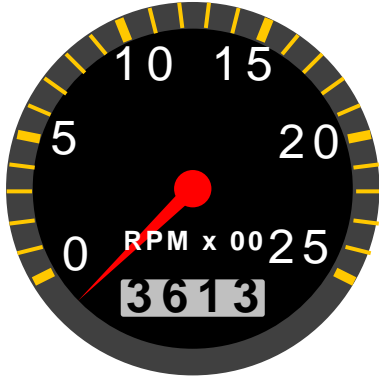
03/13/2023

Top Speed

Speed At Maximum RPM



RPM At 60MPH



	MPH	RPM
Top Speed	0.0	0
Cruise Speed	60.0	3,613
Minimum Of Engine Range	0.0	0
Maximum Of Engine Range	0.0	0
Minimum Of Economy Range	0.0	0
Maximum Of Economy Range	0.0	0

SPECIFICATION SUMMARY

Model	ACTT64 Class 8
Engine	QSBT4f 146HP @ 2100RPM / 620 LB-FT @1500RPM, CUMMINS
Transmission	ALLISON 3000 SERIES, 4-SPEED
Rear Axle	MERITOR MT40 - 14X
Rear Axle Ratio	7.17
Rear Tire	295/75R22.5G
Tire Revolution	504