

## ***ACTT42 Class 8 Model Year 2024***

Vanguard Truck Center of Charlotte  
NA

Prepared By : Mark Hughel  
704-597-4212  
Mark.Hughel@vanguardtrucks.com

Prepared For : KAYLYN MITMAN  
NORTH CAROLINA SHERIFF'S  
ASSOCIATION

Monday, March 13, 2023 11:37:58 AM EST

# Chassis Specification

			Description	Front Weight	Rear Weight
<b>AUTOCAR TRUCKS</b>					
S	0040004	MODELS	ACTT42	9,815	4,010
S	5000005	CAB SHELL	ACTT SINGLE CAB	0	0
X	100T98	CUSTOMER LAYOUT	NONE	0	0
S	680004	NAME PLATES,STD	AUTOCAR	0	0
<b>SOLUTION</b>					
S	C00000	TRUCK TYPE	CUSTOM TRUCK	0	0
S	C010010	APPLICATION	TERMINAL TRACTOR - DISTRIBUTION	0	0
O	D020240	REAR GAWR	24000 LBS	0	0
O	D110810	GCWR	81,000 LBS	0	0
<b>VEHICLE ADAPTATION</b>					
O	114010	COUNTRY OF USE	UNITED STATES STD MARKET ADAPTATION	0	0
<b>ENGINE</b>					
S	1580003	ENGINE VOCATION	OFF-HIGHWAY - NORTH AMERICA	0	0
S	1015000	ENGINE ASSY	QSBT4f 146HP @ 2100RPM / 620 LB-FT @1500RPM, CUMMINS	0	0
S	102146	ENGINE HORSEPOWER RATING	146 HORSE POWER	0	0
S	972A210	SPECIAL EMISSION CERTIFICATION LABELS	OFF ROAD T4 EMISSION	0	0
S	9725000	CERTIFICATION- EMISSIONS	COMPLIES WITH OFFROAD TIER 4F EMISSIONS	0	0
<b>ENGINE EQUIP</b>					
S	1290004	ENGINE ELECTRONICS	CUMMINS 500K COMMUNICATION	0	0
S	P010025	VEHICLE GOVERNED SPEED LIMIT	SPEED LIMIT 25MPH	0	0
S	P020002	ENGINE IDLE SHUT DOWN	ENGINE IDLE SHUT DOWN DISABLED	0	0
X	1325004	ENGINE PROTECT SYSTEM/WARNINGS	AUDIBLE/VISUAL ALARM/LOP, HT, LWL W/SHUTDOWN	0	0
S	4380003	FILTER-FUEL, CHASSIS MOUNTED	FLEETGUARD FS 1003 F/W SEPARATOR W/PROBE & DASH LIGHT	0	0

S	1700003	<b>FILTER-FUEL, ENGINE MOUNTED</b>	SPIN-ON, ENGINE MOUNTED	0	0
S	1750001	<b>ENGINE OIL</b>	STANDARD ENGINE OIL	0	0
S	2005000	<b>RADIATOR</b>	850 SQ. IN. CAPACITY	0	0
S	204002	<b>COOLANT HOSES</b>	SILICONE HOSES WITH STEEL TUBING	0	0
S	2080002	<b>FAN &amp; DRIVE-ENGINE</b>	FAN, DIRECT DRIVE	0	0
S	2090001	<b>RADIATOR COOLANT</b>	EXTENDED LIFE COOLANT	0	0
S	2120003	<b>RADIATOR SURGE TANK</b>	STANDARD SURGE TANK W/ SIGHT GLASS	0	0
S	2200006	<b>AIR CLEANER</b>	11" TWO STAGE	0	0
S	2305000	<b>MUFFLER SYSTEM</b>	VERTICAL DOC W/ HORIZONTAL SCR	0	0
S	2310003	<b>EXHAUST SHIELDS</b>	SHIELDS, DPF & SCR	0	0
S	2325000	<b>EXHAUST STACKS</b>	STAINLESS STL STACK W/TURN OUT HEIGHT TO MATCH CAB ROOF	0	0
S	236002	<b>MUFFLER SUPPORT</b>	FRAME MOUNTED	0	0
S	2395002	<b>UREA DELIVERY SYSTEM</b>	FRAME MOUNTED, 6 GAL CAPACITY	0	0
S	700026	<b>AIR COMPRESSOR</b>	CUMMINS WABCO 18.7 CFM COMPRESSOR	0	0
S	8025000	<b>ALTERNATOR</b>	DELCO REMY 160 AMP, 28SI PAD MTD W/REMOTE SENSE	0	0
S	8055001	<b>DI-ELECTRIC GREASE</b>	ELECTRICAL RING/POST CORROSION INHIBITOR	0	0
S	8105006	<b>BATTERY</b>	2 BATTERIES, 31ECL, 12V 1500CCA	0	0
S	8205002	<b>STARTING MOTOR</b>	DELCO REMY 12V 31MT	0	0
<b>TRANSMISSION</b>					
S	2690005	<b>CONTROL MODULE (ELECT)</b>	UTILITY, YARD TRACTOR, GRP99, VP113	0	0
S	PT10001	<b>TRANS DIRECTION CHANGE SHIFT INHIBIT</b>	SHIFT INHIBIT ENABLED	0	0
S	2700020	<b>TRANSMISSION</b>	ALLISON 3000 SERIES, 4-SPEED	0	0
S	284016	<b>TRANSMISSION CONTROLS</b>	ALLISON PUSHBUTTON CONTROLS	0	0
S	286005	<b>COOLER-TRANSMISSION OIL</b>	OIL TO WATER TYPE	0	0
S	290003	<b>TRANSMISSION OIL FILL/CHECK</b>	OIL FILL TUBE / DIPSTICK W/ LEVEL SENSOR	0	0
S	292004	<b>TRANSMISSION LUBRICANT</b>	TRANSYND SYNTHETIC AUTO TRANS FLUID	0	0
S	300015	<b>DRIVESHAFT-MAIN</b>	SPICER 1710HD HALF ROUND	0	0
<b>FRONT AXLE</b>					

S	3700005	<b>FRONT AXLE</b>	MERITOR MFS-14 STEER AXLE, 14700# RATING	0	0
S	371007	<b>FRONT SUSPENSION</b>	6500 LB FLATLEAF 14,500 GROUND CAPACITY	0	0
S	373002	<b>SHOCK ABSORBERS- FRONT</b>	DOUBLE ACTING SINGLE - HEAVY DUTY	0	0
S	374002	<b>FRONT AXLE LUBRICANT</b>	SYNTHETIC,DANA SPICER EP75W90,OR EQUIV	0	0
S	3835001	<b>STEERING GEAR</b>	M100 LOW SPEED GEAR	0	0
S	384009	<b>POWER STEERING PUMP</b>	STANDARD P/S PUMP	0	0
S	3870001	<b>POWER STEERING RESERVOIR</b>	INTEGRAL WITH FIFTH WHEEL RESERVOIR	0	0

### REAR AXLE

S	3300017	<b>REAR DRIVE AXLE-SINGLE &amp; TANDEM</b>	MERITOR RS24-160, SINGLE REDUCTION AXLE	0	0
S	330H001	<b>REAR DRIVE AXLE-SINGLE &amp; TANDEM</b>	STANDARD TRACK	0	0
S	331717	<b>REAR DRIVE AXLE RATIO</b>	7.17	0	0
S	339002	<b>REAR AXLE LUBRICANT</b>	SYNTHETIC	0	0
S	3400001	<b>REAR AXLE BREATHER</b>	STANDARD AXLE BREATHER	0	0
S	3500010	<b>REAR SUSPENSION</b>	SOLID MOUNT SUSPENSION	0	0

### BRAKES

S	7415001	<b>BRAKE CONTROL SYSTEM</b>	FMVSS EXEMPT BRAKE SYSTEM	0	0
S	782018	<b>BRAKE VALVE-PARKING CONTROL</b>	TRAILER/TRACTOR PARK AND SUPPLY VALVE	0	0
S	7510012	<b>BRAKES-FOUNDATION, FRONT AXLE</b>	MERITOR 15x4 Q PLUS	0	0
S	753018	<b>BRAKE CHAMBERS-FRONT AXLE</b>	CAM-STANDARD	0	0
S	754009	<b>BRAKE SLACK ADJUSTERS -FRONT AXLE</b>	MERITOR AUTOMATIC	0	0
S	755001	<b>DUST SHIELDS - FRT BRAKES</b>	DUST SHIELDS - FRONT BRAKES	0	0
S	901001	<b>BRAKE DRUM-FRONT</b>	CAST IRON	0	0
S	7610003	<b>BRAKES-FOUNDATION, REAR AXLE</b>	MERITOR 16.5X7 Q PLUS	0	0
S	763019	<b>BRAKE CHAMBERS-REAR AXLE</b>	CAM-STANDARD	0	0
S	764012	<b>BRAKE SLACK ADJUSTERS -REAR AXLE</b>	ARVIN MERITOR AUTOMATIC-SINGLE AXLE	0	0
S	765001	<b>DUST SHIELDS - REAR BRAKES</b>	DUST SHIELDS - REAR BRAKES	0	0
S	781011	<b>BRAKE CHAMBERS- PARKING, TYPE/VENDOR</b>	MGM, CAM TYPE, STOPGARD (2),	0	0
S	910001	<b>BRAKE DRUM-REAR</b>	CAST IRON	0	0

## CHASSIS

S	400116	WHEELBASE	116 INCHES	0	0
S	402027	FRAME-REAR OVERHANG	27"	0	0
S	4035001	FRAME RAILS	3/8" X 13" STRAIGHT STEEL, 120KSI	0	0
S	3250001	HYDRAULIC TANK	15 GAL STEEL	0	0
S	4060004	FRAME-REAR CUT-OFF	TAPER CUT-OFF, 23 DEGREES	0	0
S	3265000	HYDRAULIC FILTER	HYDAC 38GPM IN TANK FILTER	0	0
S	4090002	FRAME CROSSMEMBER- CENTER	STEEL	0	0
S	411005	FRAME CROSSMEMBER- END CLOSING	TAPER STEEL	0	0
S	4300009	FUEL TANK-LEFT	50 GAL CYLINDRICAL STEEL TANK	0	0
S	432002	FUEL TANK STRAP/ SUPPORT LEFT	PAINTED STEEL	0	0
S	435001	FUEL TANK OVERFLOW PIPE	STANDARD VENT	0	0
S	436001	FUEL LINES	SAE J844 NYLON TUBING	0	0
S	4520001	REAR DECK	STANDARD REAR DECK	0	0
S	4530001	STEP-BOC ACCESS	LH ONLY ACCESS STEPS	0	0
S	4600005	BUMPER-FRONT	FRONT BUMPER, DISTRIBUTION	0	0
S	4800001	TOWING DEVICE-FRONT	FRONT TOW EYES	0	0
S	4810001	TOWING HOOKS-REAR	REAR TOW EYES	0	0
S	4905004	FIFTH WHEEL	HOLLAND FW35TT (80,000 LBS) 16" LIFT	0	0
S	49B5001	BOOM PIVOT	VESCONITE	0	0
S	711001	AIR TANK-BRAKE	STEEL TANKS FOR SINGLE AXLE	0	0
S	711U98	AIR TANK MOUNTING	AIR TANKS IN STD POSITION	0	0
S	715001	WET TANK DRAIN	MANUAL TYPE PETCOCK	0	0
S	715T001	AIR RESERVOIR DRAIN SYSTEM	PETCOCK, ALL TANKS	0	0
S	724001	AIR LINES-CAB	SAE J844 NYLON TUBING	0	0
S	728001	AIR LINES-MAIN, CHASSIS	SAE J844 NYLON TUBING	0	0
S	8120011	BATTERY BOX	BATTERY BOX, 2 BATTERY CAPACITY	0	0
S	812S500	BATTERY ISOLATION PAD	BATTERY INSULATION PAD, WOOD	0	0
S	8920002	BACKUP ALARM	BACKUP ALARM	0	0
S	32M5000	HYDRAULIC SYSTEM OIL	TRANSYND ATF	0	0

## CAB EXTERIOR

S	4510004	STEP-CAB ACCESS, CAB MOUNTED	LH ONLY CAB ENTRANCE STEPS	0	0
---	---------	---------------------------------	-------------------------------	---	---

S	5020004	<b>CAB DOORS</b>	LH STANDARD DOOR W/ ALUMINUM SLIDING REAR DOOR	0	0
S	5185000	<b>CAB SLIDING DOOR</b>	ALUM REAR SLIDING DOOR	0	0
S	5100004	<b>GLASS</b>	WINDSHIELD - TEMPERED, ALL GLASS TINTED	0	0
S	51A0001	<b>REAR WINDOW AND SLIDING DOOR GLASS</b>	REAR CAB GLASS, TEMPERED	0	0
S	51B0001	<b>CURB SIDE REAR WINDOW</b>	RIGHT SIDE REAR WINDOW, TEMPERED GLASS	0	0
S	622001	<b>MIRRORS-DUAL WEST COAST</b>	BLACK PAINTED	0	0
S	624012	<b>GRAB HANDLES-ENTRY</b>	STANDARD - MEETS FMCSR 399 REQUIREMENTS	0	0
S	631001	<b>HORN-ELECTRIC</b>	SINGLE	0	0
S	6615005	<b>CAB TILT MECHANISM- C.O.E.</b>	HYDRAULIC TILT W/ ELECTRIC ASSIST, REMOTE SWITCH AND YELLOW SAFETY BAR	0	0
S	6620002	<b>CAB LATCH/HOLDDOWN- C.O.E.</b>	4 POINT CAB MOUNTING, REAR AIR BAG W/HYDRAULIC LATCH	0	0
S	6720007	<b>GRILLE</b>	ACTT STANDARD GRILLE	0	0
S	51C5002	<b>CURB SIDE WINDOW</b>	FORWARD SLIDING WINDOW	0	0

### **CAB INTERIOR**

S	1135018	<b>CAB INTERIOR ENHANCEMENTS</b>	ACTT MY2021 INTERIOR WITH ADVANCED DISPLAY	0	0
S	380003	<b>STEERING WHEEL</b>	18" DIA. WHEEL	0	0
S	381001	<b>STEERING COLUMN</b>	FIXED POSITION	0	0
S	5200011	<b>SEAT-DRIVER</b>	SEATS INC MID BACK AIR RIDE W/O ISOLATOR , HERITAGE SILVER	0	0
S	5220004	<b>SEAT BELTS-DRIVER</b>	TWO POINT LAP BELT, BLACK	0	0
S	5265005	<b>SEAT INSERT</b>	BLACK CELDURA CLOTH	0	0
S	538001	<b>CARPET &amp; MAT</b>	MAT WITH FOAM BACK	0	0
S	5400002	<b>CAB PANELS-INTERIOR TRIM</b>	ACTT STANDARD INTERIOR TRIM	0	0
S	5945000	<b>CIGAR LIGHTER</b>	POWER PORT AND TWO USB PORTS	0	0
S	8640002	<b>LAMPS-CAB INTERIOR</b>	LED DOME LIGHT W/DASH SWITCH	0	0

### **CAB CLIMATE CONTROL**

S	0605001	<b>CAB TEMPERATURE SYSTEM</b>	INTEGRAL HVAC W/ DEFROST	0	0
---	---------	-----------------------------------	-----------------------------	---	---

### **GAUGES & INSTRUMENTATION**

S	0575003	<b>INSTRUMENTS SALES PKG</b>	ACTT CLUSTER GAUGE PACKAGE	0	0
S	1445000	<b>DRIVER INFORMATION CENTER</b>	INFORMATION DISPLAY	0	0
S	1360001	<b>TACHOMETER/RPM TACHOGRAPH</b>	ELECTRONIC TACHOMETER WITH HOURMETER	0	0
S	137003	<b>GAUGE-HOURMETER</b>	ELECTRIC, DASH MOUNTED	0	0
S	1380001	<b>GAUGE-ENGINE OIL PRESSURE</b>	ELECTRONIC ENGINE OIL PRESSURE	0	0
S	1400001	<b>GAUGE-ENGINE COOLANT TEMPERATURE</b>	ELECTRONIC ENGINE COOLANT TEMP.	0	0
S	2250002	<b>AIR INTAKE RESTRICTION INDICATOR</b>	GRADUATED, MTD UNDER HOOD, NO WARNING LAMP	0	0
S	288009	<b>MONITORING - TRANSMISSION OIL TEMP</b>	TRANS TEMP WARNING LIGHT & BUZZER	0	0
S	4930003	<b>FIFTH WHEEL CONTROL</b>	CAB CONTROL, CABLE	0	0
S	5770001	<b>SPEEDOMETER/ODOMETER</b>	ELECTRONIC WITH ODOMETER	0	0
S	804001	<b>VOLTMETER/AMMETER</b>	VOLTMETER	0	0
S	1472001	<b>VEHICLE MONITORING SYSTEM</b>	AUTOCAR ADVANCED TELEMATICS-FULL INSTALLATION	0	0
S	493T500	<b>FIFTH WHEEL CONTROL W/ DUST SEAL</b>	FIFTH WHEEL CONTROL W/ SEAL	0	0

## LIGHTING

S	8360002	<b>LAMPS-HEAD</b>	HEADLAMP, RECTANGULAR SEALED BEAM	0	0
S	837011	<b>LAMPS-STOP-TAIL</b>	LED, DUAL, TRUCKLITE MODEL 44	0	0
S	8380005	<b>LAMPS-BACKUP</b>	BACK-UP LAMPS, SINGLE OVAL	0	0
S	844016	<b>SWITCH-TURN SIGNAL &amp; FLASHER</b>	NON-CANCELLING W/TRANSISTORIZED FLASHER	0	0
S	860004	<b>LAMPS-BACK OF CAB</b>	RECESSED BOC, SPOTTING LIGHT	0	0

## RADIO/MISC

S	509002	<b>KEY &amp; LOCK SETS-IGN/DOORS</b>	DOOR & IGNITION SAME - SAME FOR FLEET	0	0
S	6280006	<b>WINDSHIELD WIPER</b>	SINGLE PANTOGRAPH W/O WASHER	0	0
S	8735000	<b>WIRING-CAB</b>	DASH MOUNTED FUSE PANEL, STD CAB WIRING	0	0

## FRONT TIRES / WHEELS

S	9210001	<b>HUB CAPS - FRONT AXLE</b>	CR ZYTEL HUBCAP	0	0
S	9400001	<b>WHEEL OIL SEALS-FRONT</b>	SCOTSEAL PLUS XL	0	0

S	904011	HUBS-FRONT	STEEL HUB PILOTED,285MM BOLT CIRCLE	0	0
S	9050014	WHEELS-DISC FRONT	22.5x8.25" STEEL HP, 6.18" INSET, 5HH	0	0
S	905V500	FRONT TIRE VALVE STEMS/CAPS	STANDARD STEM/CAP	0	0
S	930100	TIRE SIZE & LOAD RANGE - FRONT	295/75R22.5G	0	0
S	9310060	TIRE MANUFACTURER & TREAD - FRONT	DOUBLE COIN RR680	0	0

#### REAR TIRES / WHEELS

S	9130001	HUBS-REAR	IRON HUB, HP 10 STUD	0	0
S	9140014	WHEELS-DISC REAR	22.5X8.25" STEEL, HP, 5HH	0	0
S	914V500	REAR TIRE VALVE STEMS/CAPS	STANDARD STEM/CAP	0	0
S	933100	TIRE SIZE & LOAD RANGE - REAR	295/75R22.5G	0	0
S	9340060	TIRE MANUFACTURER & TREAD - REAR	DOUBLE COIN RR680	0	0
S	9410001	WHEEL OIL SEALS-REAR	SCOTSEAL PLUS XL	0	0

#### PAINT

S	950001	CAB PAINT SCHEME	SINGLE COLOR PAINT	0	0
S	9520001	PAINT SCHEME- ADDITIONAL	SAFETY YELLOW PAINT - STEPS, DECKING AND GRAB HANDLES	0	0
S	9550001	CAB PAINT TYPE	STANDARD WHITE	0	0
S	9801001	CAB COLOR-FIRST	APPROVED---DPSS-N0007--- STANDARD WHITE N0007	0	0
S	9861U1	CHASSIS COLOR	BLACK P3036	0	0
O	9875001	BUMPER COLOR	BUMPER COLOR BLACK P3036	0	0
S	9885002	DISC WHEEL OR RIM COLOR	POWDER COAT WHITE	0	0

#### ADDITIONAL OPTIONS

S	8990008	CHASSIS WARRANTY	STANDARD ACTT WARRANTY	0	0
S	899A500	TRANSMISSION WARRANTY	ALLISON 3YR WARRANTY	0	0
S	899B001	ENGINE WARRANTY	CUMMINS STANDARD WARRANTY	0	0
S	978000	FLOOR PLAN	NO FLOORING PLAN	0	0

#### OTHERS

S	133003	ACCELERATOR PEDAL & LINK	WILLIAMS ACCELERATOR	0	0
S	488460	FIFTH WHEEL HEIGHT	FIFTH WHEEL NOMINAL HEIGHT 46"	0	0



S	6605003	CAB MOUNTS	NEOPRENE CAB PIVOT BUSHINGS	0	0
S	720002	BRAKE VALVE & PEDAL	FLOOR MOUNTED PEDAL - STANDARD	0	0
S	740003	CERTIFICATION COMPLIANCE	US SALE-US COMMERCE-UNDER 34 MPH	0	0
S	7930005	TRAILER AIR HOSES	15' RUBBER AIR HOSES W/ SPRING HANGER SUPPORT	0	0
S	7950001	TRAILER HOSE HANGERS & SUPPORTS	TRAILER HOSE HANGERS & SUPPORTS	0	0
S	822001	STARTING SWITCH	STANDARD	0	0
S	8905003	TRAILER CABLE RECEPTACLE	TRAILER CABLE RECEPTACLE W/ ISOLATED CIRCUIT CONNECTIONS	0	0
S	9725000	CERTIFICATION-EMISSIONS	COMPLIES WITH OFFROAD TIER 4F EMISSIONS	0	0
S	9740001	CERTIFICATION-EXTERIOR NOISE	INDUSTRIAL / NON-REGULATED EXPORT, NO CERT. REQ'D	0	0

#### SUB TOTALS

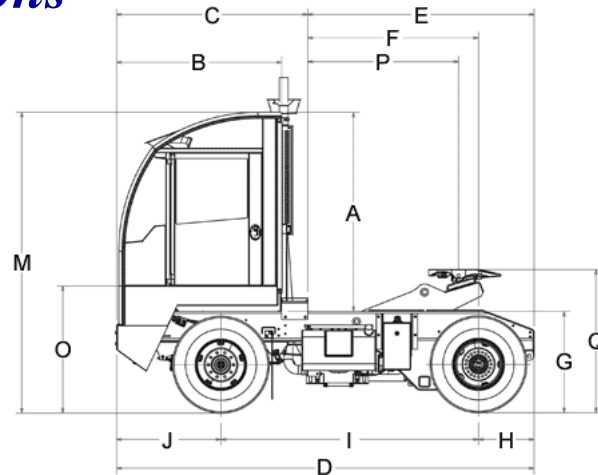
BASE WEIGHT	9,815	4,010
FACTORY OPTION WEIGHT	0	0
DISTRIBUTOR OPTION WEIGHT	0	0

#### TOTALS

TOTAL WEIGHT (LB)	9,815	4,010	13,825
-------------------	-------	-------	--------

03/13/2023

## Dimensions



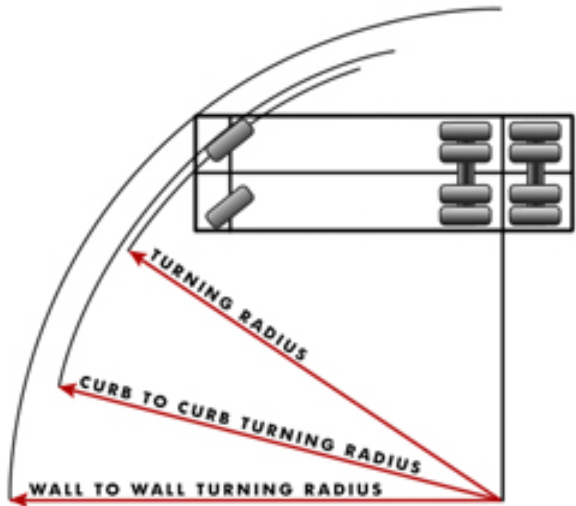
	Dimension(ft)	Description
A	89.50	CAB HEIGHT
B	76.50	BUMPER TO BACK OF CAB
C	0.00	EFFECTIVE BUMPER TO BACK OF CAB
D	192.00	OVERALL LENGTH
E	0.00	EFFECTIVE CAB TO END OF FRAME
F	0.00	EFFECTIVE CAB TO REAR AXLE
G	0.00	UNLADEN FRAME HEIGHT
H	27.00	OVERHANG
I	116.00	WHEELBASE
J	49.00	BUMPER TO FRONT AXLE
M	0.00	OVERALL HEIGHT
O	0.00	FLOOR HEIGHT
P	68.00	EFFECTIVE BACK OF CAB TO KING PIN
Q	0.00	GROUND TO TOP OF 5TH WHEEL (RAISED)
Q	0.00	GROUND TO TOP OF 5TH WHEEL (LOWERED)

### SPECIFICATION SUMMARY

Model	ACTT42 Class 8
Engine	QSBT4f 146HP @ 2100RPM / 620 LB-FT @1500RPM, CUMMINS
Transmission	ALLISON 3000 SERIES, 4-SPEED
Rear Axle	MERITOR RS24-160, SINGLE REDUCTION AXLE
Rear Axle Ratio	7.17
Rear Tire	295/75R22.5G

03/13/2023

Turning Radius



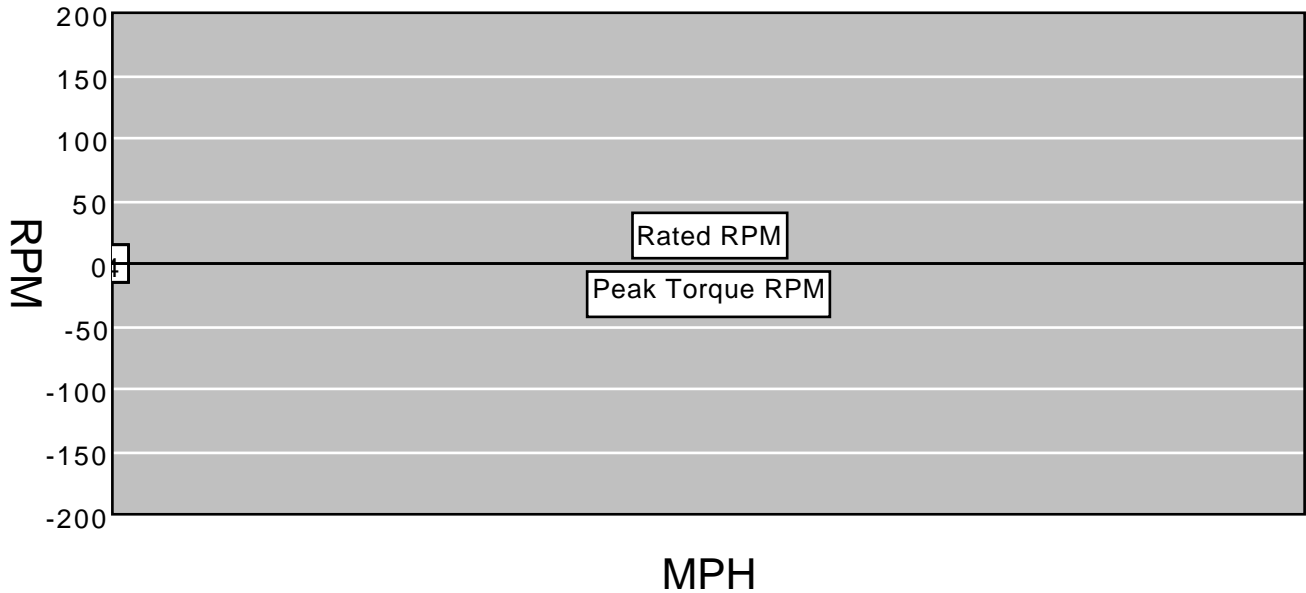
	Dimension(ft)	Description
A	20.36	TURNING RADIUS
B	42.68	CURB TO CURB TURNING DIAMETER
C	45.51	WALL TO WALL TURNING DIAMETER

SPECIFICATION SUMMARY

Model	
Engine	QSBT4f 146HP @ 2100RPM / 620 LB-FT @1500RPM, CUMMINS
Transmission	ALLISON 3000 SERIES, 4-SPEED
Rear Axle	MERITOR RS24-160, SINGLE REDUCTION AXLE
Rear Axle Ratio	7.17
Rear Tire	295/75R22.5G

03/13/2023

## Shift Chart



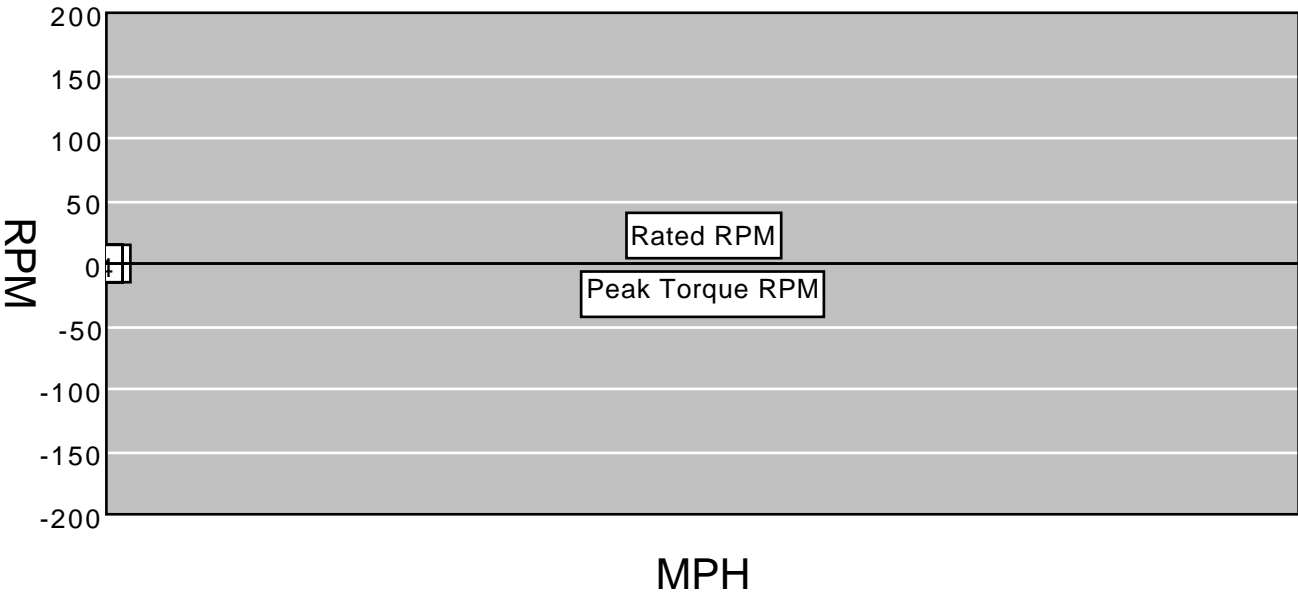
Gear	Trans. Ration	Rear Axle Ration	Overall Reduction	% Split	MPH	RPM After Shift
1C	5.06	7.17	36.3	0.0	0.0	0
1	3.49	7.17	25.0	45.0	0.0	0
2	1.86	7.17	13.3	87.6	0.0	0
3	1.41	7.17	10.1	31.9	0.0	0
4	1.00	7.17	7.2	41.0	0.0	0

### SPECIFICATION SUMMARY

Model	ACTT42 Class 8
Engine	QSBT4f 146HP @ 2100RPM / 620 LB-FT @ 1500RPM, CUMMINS
Rated Power	0 HP @ 0 RPM
Peak Torque	0 LB-FT @ 0
Transmission	ALLISON 3000 SERIES, 4-SPEED
Rear Axle	MERITOR RS24-160, SINGLE REDUCTION AXLE
Rear Axle Ratio	7.17
Rear Tire	295/75R22.5G
Tire Revolution	504

03/13/2023

Operating Range



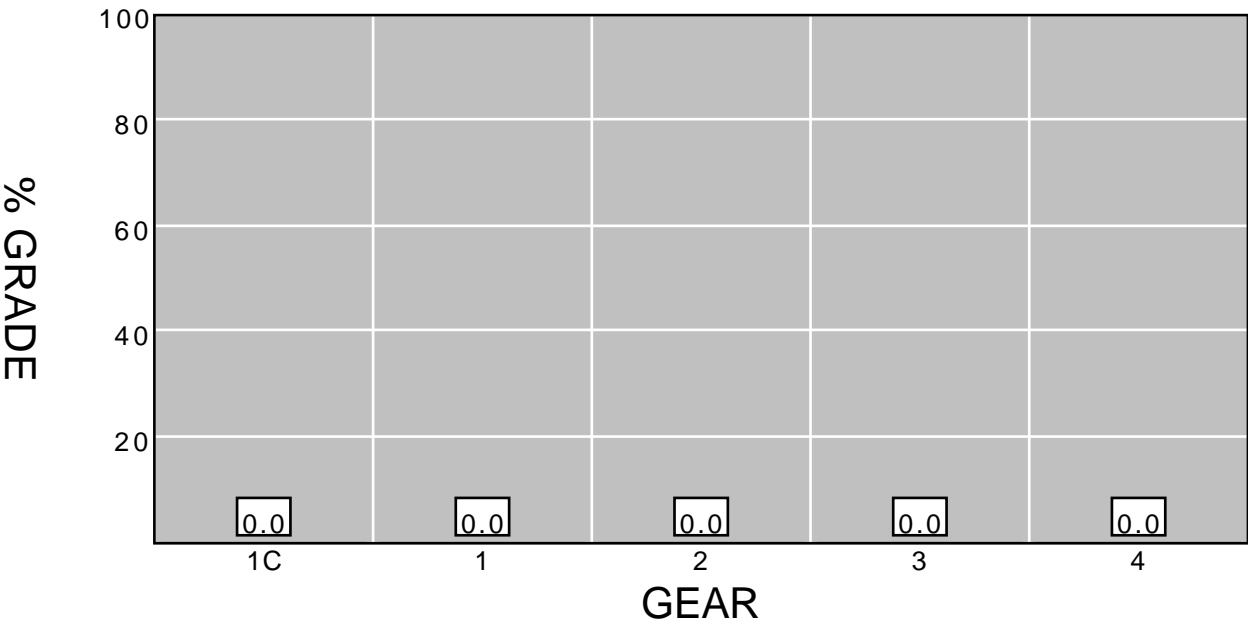
	Gear	Trans. Ratio	Rear Axle Ratio	Minimum MPH	Maximum MPH
	1C	5.06	7.17	0.0	0.0
	1	3.49	7.17	0.0	0.0
	2	1.86	7.17	0.0	0.0
	3	1.41	7.17	0.0	0.0
	4	1.00	7.17	0.0	0.0

SPECIFICATION SUMMARY

Model	ACTT42 Class 8
Engine	QSBT4f 146HP @ 2100RPM / 620 LB-FT @ 1500RPM, CUMMINS
Rated Power	0 HP @ 0 RPM
Peak Torque	0 LB-FT @ 0
Transmission	ALLISON 3000 SERIES, 4-SPEED
Rear Axle	MERITOR RS24-160, SINGLE REDUCTION AXLE
Rear Axle Ratio	7.17
Rear Tire	295/75R22.5G
Tire Revolution	504

03/13/2023

Gradeability



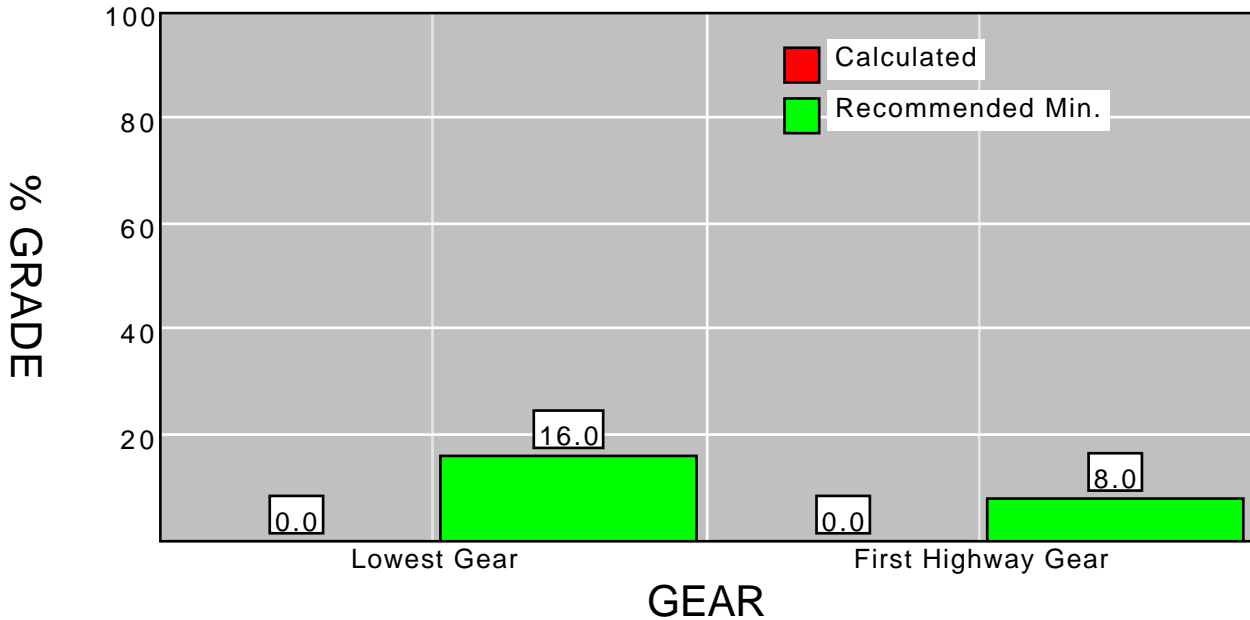
Gear	Trans. Ratio	Rear Axle Ratio	Overall Reduction	Peak Torque	Wheel HP	MPH	Maximum Grade%
1C	5.06	7.17	36.3	0.0	0.0	0.0	0.0
1	3.49	7.17	25.0	0.0	0.0	0.0	0.0
2	1.86	7.17	13.3	0.0	0.0	0.0	0.0
3	1.41	7.17	10.1	0.0	0.0	0.0	0.0
4	1.00	7.17	7.2	0.0	0.0	0.0	0.0

SPECIFICATION SUMMARY

Model	ACTT42 Class 8
Engine	QSBT4f 146HP @ 2100RPM / 620 LB-FT @1500RPM, CUMMINS
Peak Torque	0 LB-FT @ 0
Transmission	ALLISON 3000 SERIES, 4-SPEED
Rear Axle	MERITOR RS24-160, SINGLE REDUCTION AXLE
Rear Axle Ratio	7.17
Rear Tire	295/75R22.5G
Tire Revolution	504
GVW/GCV	0
Surface	Concrete

03/13/2023

## Startability



Gear	Application	Recommended Minimum Grade %	Calculated Grade %
Lowest Gear	City	12.0	n/a
	On Highway	16.0	n/a
	On-Off Highway	18.0	n/a
	Off Highway	20.0	n/a
		0.0	n/a
First Highway Gear	All Applications	8.0	n/a

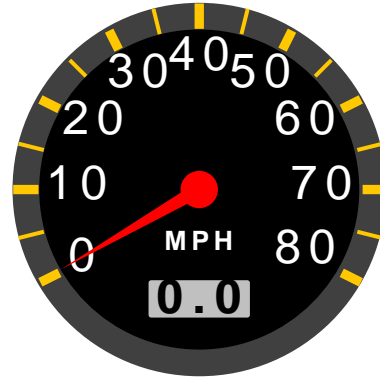
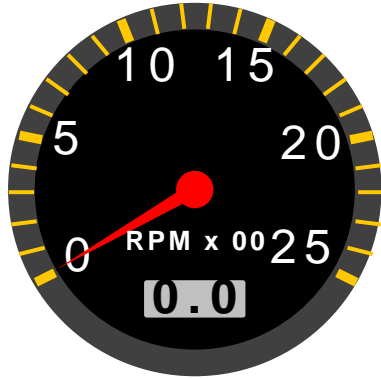
### "SPECIFICATION SUMMARY"

Model	ACTT42 Class 8
Engine	QSBT4f 146HP @ 2100RPM / 620 LB-FT @1500RPM, CUMMINS
Clutch Torque	0 LB-FT 0 RPM
Transmission	ALLISON 3000 SERIES, 4-SPEED
Rear Axle	MERITOR RS24-160, SINGLE REDUCTION AXLE
Rear Axle Ratio	7.17
Rear Tire	295/75R22.5G
Tire Radius	19.5
GVW/GCV	0
Surface	Concrete
Terrain	On Highway

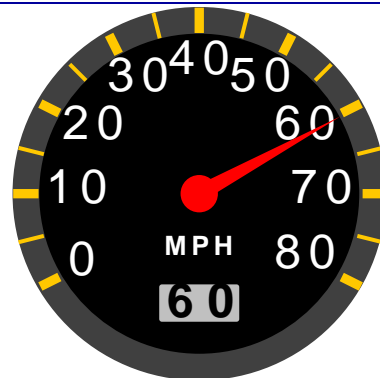
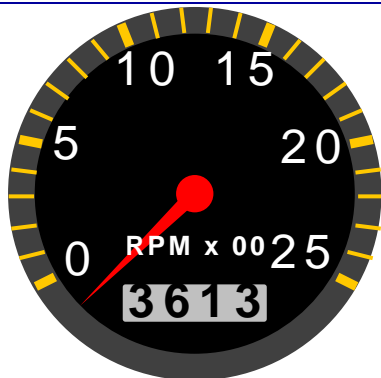
03/13/2023

## Top Speed

### Speed At Maximum RPM



### RPM At 60MPH



	MPH	RPM
Top Speed	0.0	0
Cruise Speed	60.0	3,613
Minimum Of Engine Range	0.0	0
Maximum Of Engine Range	0.0	0
Minimum Of Economy Range	0.0	0
Maximum Of Economy Range	0.0	0



**SPECIFICATION SUMMARY**

---

Model	ACTT42 Class 8
Engine	QSBT4f 146HP @ 2100RPM / 620 LB-FT @1500RPM, CUMMINS
Transmission	ALLISON 3000 SERIES, 4-SPEED
Rear Axle	MERITOR RS24-160, SINGLE REDUCTION AXLE
Rear Axle Ratio	7.17
Rear Tire	295/75R22.5G
Tire Revolution	504