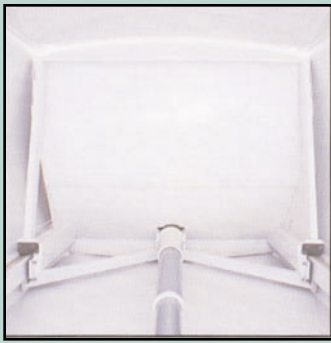


LEGACY



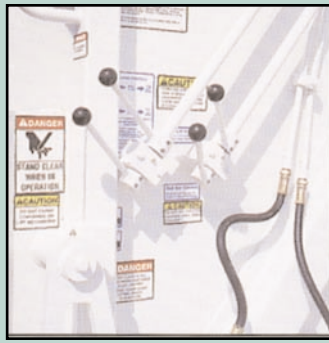
LOADMASTERTM

"THE TRADITIONAL CHOICE FOR RELIABILITY & PERFORMANCE"



Ejection Blade

The curved ejection blade rides on six "UHMW" polyethylene wear shoes. Blade guides are closed channels welded to the inside body side-walls, up above the dirt and grit which can accumulate on the floor, for extended shoe life and low maintenance.



Hydraulic Controls

Controls are located in a comfortable location, mounted in machined "UHMW" polyethylene, for a more smooth wear resistant vibration dampened operation.



Body Side Door

The Legacy side door provides a large convenient maintenance access. The attractive body contoured door has large grab handles to help enter and exit the compactor body. Side door access ladder provided. Hidden hinges to eliminate rust.



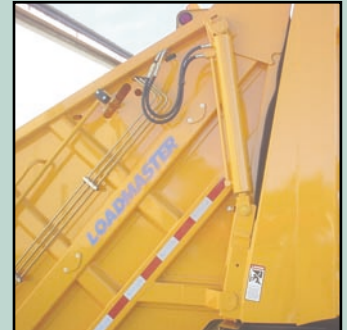
Compaction Blades

The strong clean rugged design of the Legacy blades are also the easiest in the industry to remove and maintain. Loadmaster engineers designed the blades to run on large uhmw plastic guide shoes for minimal wear and long life. Compact and sweep cylinders are internally "cushioned" for smoother quieter operation.



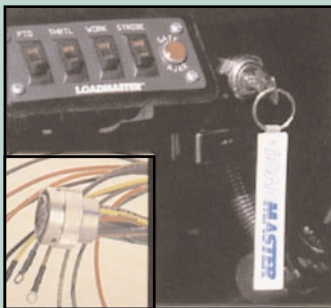
Optional Container "Kick" Bar

Loadmaster has several dump options available. Here you see a 2-10 option and a kick-bar.



Tailgate Locks

Loadmaster offers both heavy duty "turnbuckle" style and automatic hydraulic tailgate locks. Our tailgate lift cylinders have large oversize push rods, with built in restrictors, to slow the drop speed of the truck tailgate. The tailgate seal is a tough 70 durometer.



Wiring

Loadmaster believes it has the finest wiring in the industry. All main connectors are "aircraft" type. Each wire has its function printed on the wire itself. Your mechanic should not have to go back and forth with his voltage meter wondering where each wire goes. It's clearly labeled on each wire at the connector!! All wires are enclosed in a breathable, protective, heavy nylon loom covering. Certain optional accessories are provided for in each loom.



Body Side Walls

The Legacy utilizes clean curved pre-stressed body side walls. Your logo will display beautifully, your maintenance staff will love to clean it, your customers will admire it. Elimination of the old style vertical rib reduces rust's ability to destroy the vehicle's strength and appearance.



Hydraulic Cylinders

Loadmaster utilizes the most advanced design available in its cylinders. We take great pride in the technology and components from which our cylinders are constructed. We could not possibly describe our cylinders in this short paragraph. Call and ask us for a complete description.

Distributed by:



LOADMASTERTM

100 W. Eleventh Ave.
P.O. Box 186
Norway, MI 49870-0186

(906) 563-9226
FAX (906) 563-9800
Toll Free (800) 433-2768

Proudly made in Norway, Michigan, U.S.A.

Loadmaster reserves the right to change specifications without notice and without obligation to install them on units sold. Information published is informational only and shall not be construed to warrant suitability of the unit for any particular purpose, as performance may vary with the conditions encountered. Illustrations shown may include optional equipment and accessories, and may not include all standard equipment.

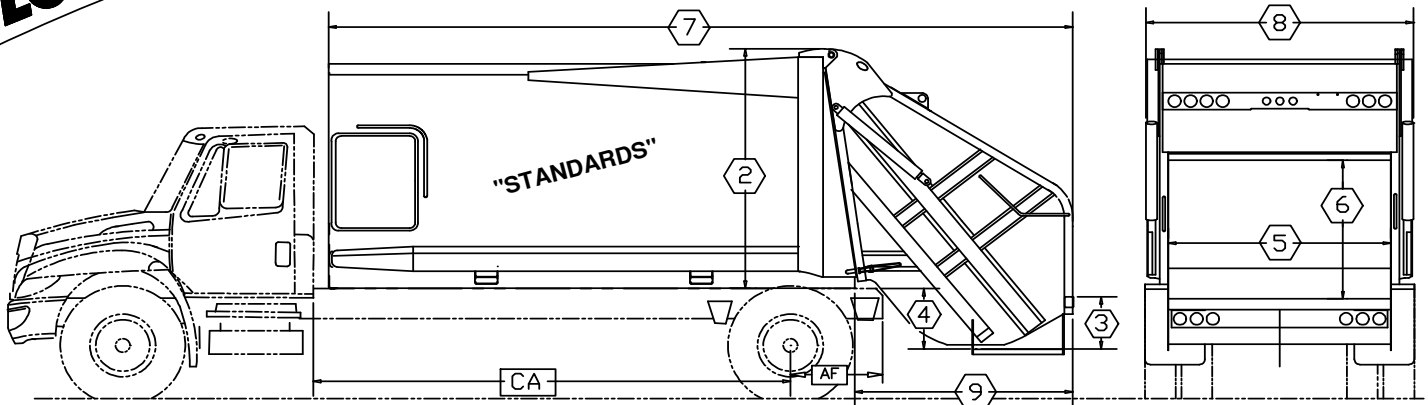
LM Form 040407



LEGACY 3 SERIES

mid range rearloader

"Standard" Lengths



This Product Data Sheet is ONLY for **"STANDARD"** length Legacy's (on Single Rear Axle chassis)

DIMENSIONAL SPECIFICATIONS for "STANDARD" length LEGACY's

| 1 AVAILABLE BODY VOLUMES → | 11 YD ³ | 13 YD ³ | 16 YD ³ | 18 YD ³ | 20 YD ³ |
|------------------------------------------|--------------------|--------------------|--------------------|--------------------|--------------------|
| 2 HEIGHT ABOVE CHASSIS FRAME | 92 | 92 | 92 | 92 | 92 |
| 3 DEPTH OF HOPPER | 19 | 19 | 19 | 19 | 19 |
| 4 HOPPER BELOW CHASSIS FRAME | 25 1/2 | 25 1/2 | 25 1/2 | 25 1/2 | 25 1/2 |
| 5 HOPPER INSIDE WIDTH | 80 | 80 | 80 | 80 | 80 |
| 6 HOPPER OPENING HEIGHT | 60 | 60 | 60 | 60 | 60 |
| 7 OVERALL LENGTH | 193 | 213 | 236 | 251 | 266 |
| 8 OVERALL WIDTH | 96 | 96 | 96 | 96 | 96 |
| 9 REAR OF BODY TO REAR OF TAILGATE | 81 | 81 | 81 | 81 | 81 |
| 10 APPROX BODY WEIGHT | 10,800 LBS | 11,200 LBS | 11,700 LBS | 12,000 LBS | 12,400 LBS |
| 11 LOAD SILL BELOW CHASSIS FRAME | 2 1/2 INCH | 2 1/2 INCH | 2 1/2 INCH | 2 1/2 INCH | 2 1/2 INCH |
| 12 HOPPER CAPACITY | 3 YD ³ | 3 YD ³ | 3 YD ³ | 3 YD ³ | 3 YD ³ |
| 13 HEIGHT ABOVE FRAME (WITH GATE RAISED) | 174 | 174 | 174 | 174 | 174 |

Employ ONLY 22.5 inch wheels & tires for any Legacy3 (do not spec 19.5 inch)

If the Legacy 20 is to be a "rare" TANDEM AXLE Chassis....see separate Product Data Sheet

LOADMASTER reserves the right to revise product specifications and without obligation.

CHASSIS RECOMMENDATIONS for STANDARD length LEGACY's

| BODY SIZE | MINIMUM GVWR | MINIMUM FRONT GAWR | MINIMUM REAR GAWR | CA | MINIMUM AF |
|--------------------|--------------|--------------------|-------------------|------|------------|
| 11 YD ³ | 26,000 | 8,000 | 18,000 | 98" | 34" |
| 13 YD ³ | 26,000 | 8,000 | 18,000 | 118" | 34" |
| 16 YD ³ | 27,000 | 9,000 | 18,000 | 140" | 34" |
| 18 YD ³ | 30,000 | 9,000 | 21,000 | 154" | 34" |
| 20 YD ³ | 33,000 | 10,000 | 23,000 | 168" | 34" |

THIS Product Data Sheet is ONLY for **"STANDARD"** Length Legacy's

See "separate" Data Sheet for "short" lengths.

(and see "separate" Data Sheet for a tandem chassis)

This "DATA SHEET" is "informational" only.
Consult with your LOADMASTER dealer
prior to ordering...for final specifications.

This DATA SHEET is solely for **Single Rear Axles**

For "CA"...assure **Clear & Useable** ... per this info.

(If EXHAUST stack is "consuming" space...
then "account" for EXHAUST when you are
"spec'ing" the Chassis.)



FEB 01, 2015

LEGACY 3 "BASE-PRODUCT" SPECIFICATIONS (11, 13, 16, 18, 20 VOLs ... "Standard Lengths")

Material Specifications-Body

| | |
|-------------------------------------------------------------------------|------------------------------------|
| Body sides | 8 ga. high tensile (gr 80) |
| Body floor | 7 ga. high tensile |
| Body roof | 10 ga. high tensile |
| Floor longitudinals | 3" x 10" x 3/16" boxed channel |
| Ejector's track channel | ¼" "hat" channel- elevated |
| Many Body <i>structural</i> upgrades available (thicknesses and alloys) | |

Material Specifications-Tailgate (3-yard hopper)

| | |
|--------------------------------------------------------------------------|----------------------------------------------------------------|
| Lower tailgate sides | 3/16" T-1 (150ksi yield) |
| Upper tailgate sides | 7 ga. high tensile in "sweep" zone 10ga. high tensile above |
| Hopper floor | 3/16" T-1 alloy |
| Separator panel | 3/16" AR235 abrasion resistant |
| Many Tailgate <i>structural</i> upgrades available (thicknesses, alloys) | |



Material Specifications-Blades

| | |
|--------------------------|---------------------------------------------------------------------------|
| Ejector's face panel | 10 ga. high tensile |
| Ejector's reinforces | ¼" high tensile |
| Ejector's shoes | UHMW polyethylene main shoes w/ UHMW poly yaw & pitch shoes |
| Sweep's face panel | 3/16" T-1 alloy (150ksi yield) |
| Sweep pusharms | ½" high tensile |
| Slide face blade | 7 ga. high tensile |
| Blade's wrist pin & axle | 2 1/2" med-carb; induction-hardened; with Hard Bushed sweep's wrist pivot |
| Slider's shoeing | durable NYLATRON NSM (a "engineering-grade" polymer) |

Hydraulic Specifications

| | | | |
|---------------------|------------------------------------------------|-------------------------|---------------------------|
| Reservoir | 30 gallon | Sweep cylinders (2) | 4 ½" bore |
| Pump | Direct-couple PTO- or- crank driven Front Pump | Slider cylinders (2) | 4 ½" bore |
| Pump flow | 30-33 gallons per minute | Gate lift cylinders (2) | 3 1/2" single acting |
| Max system pressure | 3200 psi | Ejector telescopic (1) | 4-stage (6.5/5.5/4.5/3.5) |
| Suction filter | 100 mesh | Body-mounted valve | 2 function sectional |
| Return filter | 15 micron <i>microglass</i> tank-top | Tailgate-mtd. valve | 2 function sectional |

Electrical Specifications

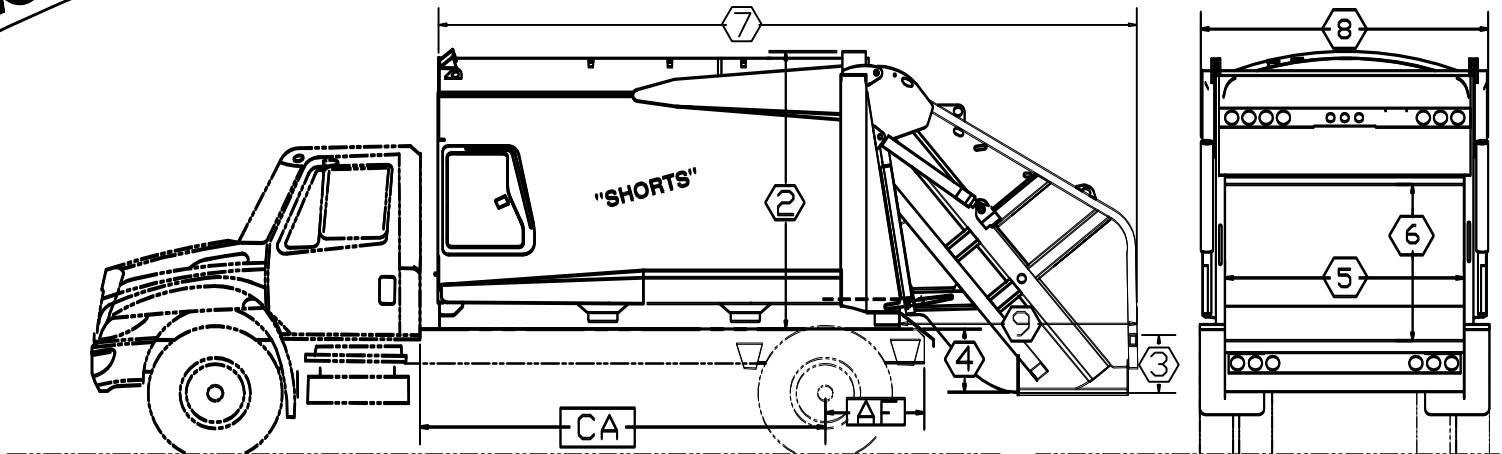
| | | | |
|------------------|-------------------------------|----------|---------------------------------|
| Wire | 14ga sxl | Switches | "grouped" rockers; in cab panel |
| Wire identifiers | color & function labeling | Lights | LED grommet-mounted style |
| Harnessing | multi-section; braid covering | | |
| Harness connects | Deutsch aircraft type | | |
| Wire connects | heat shrink sealed | | |

Some standard features

| | | |
|------------------------------------|-------------------------------------|-------------------------------------|
| Epoxy primer paint | Chromed cylinder rods | Regeneration (slider down function) |
| Undercoating | Cushioned slide and sweep cylinders | |
| Manual tailgate turnbuckle latches | Fully accessorized oil reservoir | |
| Body access door with ladder | Bolt-on riding steps | |
| Full complement of lights | Rear tailgate-mounted mudflaps | |
| Quick change shoeing | Color coded control levers | |

Some available options

| | |
|----------------------------------------|--------------------------------------------|
| Hot shift and air shift PTOs | Tool box |
| Work lights/ Strobe lights | "Customer-preferred" choices |
| "ClearStep" Roll Bar (3 yard) | Lower'd Load-Sill (1-1/2" <i>lower'd</i>) |
| Drum winch for containers | Body sump "Clean Out door(s)" |
| Roof-mtd. cable-reever ("2-10") | Automatic Tailgate Locks Option |
| Cart Tipper hydrau circuits & installs | Sling-Lift (2 yard) for containers |



This Product Data Sheet is ONLY for **"SHORT"** length Legacy's (on Single Rear Axle chassis)

DIMENSIONAL SPECIFICATIONS for SHORT length LEGACY's

| 1 | AVAILABLE BODY VOLUMES→ | ⑤16 YD ³ | ⑤18 YD ³ | ⑤20 YD ³ | ⑤25 YD ³ |
|----|---------------------------------------|---------------------|---------------------|---------------------|---------------------|
| 2 | HEIGHT ABOVE CHASSIS FRAME | 95 1/2 | 95 1/2 | 95 1/2 | 95 1/2 |
| 3 | DEPTH OF HOPPER | 19 | 19 | 19 | 19 |
| 4 | HOPPER BELOW CHASSIS FRAME | 25 1/2 | 25 1/2 | 25 1/2 | 25 1/2 |
| 5 | HOPPER INSIDE WIDTH | 80 | 80 | 80 | 80 |
| 6 | HOPPER OPENING HEIGHT | 60 | 60 | 60 | 60 |
| 7 | OVERALL LENGTH | 221 | 238 | 249 | 271 |
| 8 | OVERALL WIDTH | 96 | 96 | 96 | 96 |
| 9 | REAR OF BODY TO REAR OF TAILGATE | 81 | 81 | 81 | 81 |
| 10 | APPROX BODY WEIGHT | 12,100 LBS | 12,300 LBS | 12,700 LBS | 13,400 LBS |
| 11 | LOAD SILL BELOW CHASSIS FRAME | 2 1/2 INCH | 2 1/2 INCH | 2 1/2 INCH | 2 1/2 INCH |
| 12 | HOPPER CAPACITY | 3 YD ³ | 3 YD ³ | 3 YD ³ | 3 YD ³ |
| 13 | HEIGHT ABOVE FRAME (WITH GATE RAISED) | 174 | 174 | 174 | 174 |

Employ ONLY 22.5 inch wheels & tires for any Legacy3 (do not spec 19.5 inch)

Recommended Rear Tires for the "25S yard (only)" is 315R80-22.5 (if chassis is a S.R.A.)

If the Legacy 25S (or 20S) are to be "rare" TANDEM AXLE Chassis....see separate Product Data Sheet

LOADMASTER reserves the right to revise product specifications and without obligation.

CHASSIS RECOMMENDATIONS for SHORT length LEGACY's

| BODY SIZE | MINIMUM GVWR | MINIMUM FRONT GAWR | MINIMUM REAR GAWR | CA | MINIMUM AF |
|----------------------|--------------|--------------------|-------------------|------|------------|
| ⑤ 16 YD ³ | 30,000 | 9,000 | 21,000 | 128" | 34" |
| ⑤ 18 YD ³ | 30,000 | 9,000 | 21,000 | 140" | 34" |
| ⑤ 20 YD ³ | 33,000 | 10,000 | 23,000 | 152" | 34" |
| ⑤ 25 YD ³ | 39,000 | 12,000 | 27,000 | 170" | 34" |

THIS Product Data Sheet is ONLY for **"SHORT"** Length Legacy's

See "separate" Data Sheet for "standard" lengths.
(and see "separate" Data Sheet for a tandem chassis)

This "DATA SHEET" is "Informational" only.
Consult with your LOADMASTER dealer
prior to ordering...for final specifications.

This DATA SHEET is solely for **Single Rear Axles**

For "CA"...assure **Clear & Useable** ... per this info.
(If EXHAUST stack is "consuming" space...
then "account" for EXHAUST when you are
"spec'ing" the Chassis.)

LOADMASTER
loadmaster@loadmaster.org
800-433-2768

100 west eleventh avenue
po box 186
Norway, Michigan 49870-0186
fax 906-563-9800 fax

MAY 01, 2015

LEGACY 3 "BASE-PRODUCT" SPECIFICATIONS (16S, 18S, 20S, 25S VOLUMES ... "SHORT" Lengths)

Material Specifications-Body

| | |
|-------------------------------------------------------------------------|------------------------------------|
| Body sides | 8 ga. high tensile (gr 80) |
| Body floor | 7 ga. high tensile |
| Body roof | 8 ga. high tensile (gr 80) |
| Floor longitudinals | 3" x 10" x 3/16" boxed channel |
| Ejector's track channel | ¼" "hat" channel- elevated |
| Many Body <i>structural</i> upgrades available (thicknesses and alloys) | |

Material Specifications-Tailgate (3-yard hopper)

| | |
|--------------------------------------------------------------------------|----------------------------------------------------------------|
| Lower tailgate sides | 3/16" T-1 (150ksi yield) |
| Upper tailgate sides | 7 ga. high tensile in "sweep" zone 10ga. high tensile above |
| Hopper floor | 3/16" T-1 alloy |
| Separator panel | 3/16" AR235 abrasion resistant |
| Many Tailgate <i>structural</i> upgrades available (thicknesses, alloys) | |



Material Specifications-Blades

| | |
|--------------------------|---------------------------------------------------------------------------|
| Ejector's face panel | HD rolled 3/16" Plate... 50KSI high tensile |
| Ejector's reinforces | ¼" high tensile |
| Ejector's shoes | UHMW polyethylene main shoes w/ NYLATRON GSM yaw & pitch shoes |
| Sweep's face panel | 3/16" T-1 alloy (150ksi yield) |
| Sweep pusharms | ½" high tensile |
| Slide face blade | 7 ga. high tensile |
| Blade's wrist pin & axle | 2 1/2" med-carb; induction-hardened; with Hard Bushed sweep's wrist pivot |
| Slider's shoeing | durable NYLATRON NSM (a "engineering-grade" polymer) |

Hydraulic Specifications

| | | | |
|-----------------------------------------------------------------|------------------------------------------------|-------------------------|---------------------------|
| Reservoir | 36 gallon | Sweep cylinders (2) | 4 ½" bore |
| Pump | Direct-couple PTO- or- crank driven Front Pump | Slider cylinders (2) | 4 ½" bore |
| Pump flow | 30-33 gallons per minute | Gate lift cylinders (2) | 3 1/2" single acting |
| Max system pressure | 3200 psi | Ejector telescopic (1) | 4-stage (6.5/5.5/4.5/3.5) |
| Suction filter | 100 mesh | Body-mounted valve | 2 function sectional |
| Return filter | 15 micron <i>microglass</i> tank-top | Tailgate-mtd. valve | 2 function sectional |
| (Note: 3-stage telescopic used for 16S and 18S...6.5/ 5.5/ 4.5) | | | |

Electrical Specifications

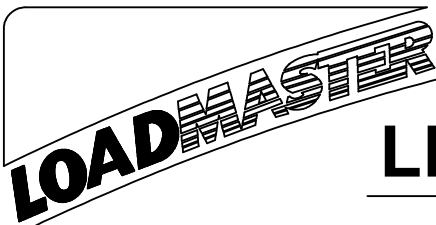
| | | | |
|------------------|-------------------------------|----------|---------------------------------|
| Wire | 14ga sxl | Switches | "grouped" rockers; in cab panel |
| Wire identifiers | color & function labeling | Lights | LED grommet-mounted style |
| Harnessing | multi-section; braid covering | | |
| Harness connects | Deutsch aircraft type | | |
| Wire connects | heat shrink sealed | | |

Some standard features

| | | |
|------------------------------------|-------------------------------------|-------------------------------------|
| Epoxy primer paint | Chromed cylinder rods | Regeneration (slider down function) |
| Undercoating | Cushioned slide and sweep cylinders | |
| Manual tailgate turnbuckle latches | Fully accessorized oil reservoir | |
| Body access door with ladder | Bolt-on riding steps | |
| Full complement of lights | Rear tailgate-mounted mudflaps | |
| Quick change shoeing | Color coded control levers | |

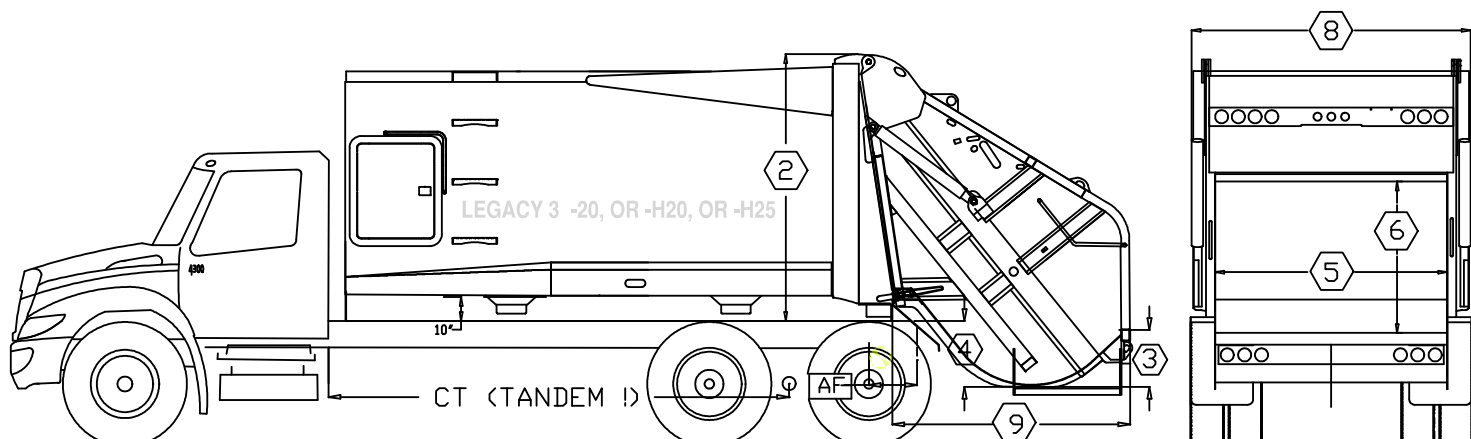
Some available options

| | |
|--------------------------------------|--------------------------------------------|
| Hot shift and air shift PTOs | Tool box |
| Work lights/ Strobe lights | "Customer-preferred" choices |
| "ClearStep" Roll Bar (3 yard) | Lower'd Load-Sill (1-1/2" <i>lower'd</i>) |
| Drum winch for containers | Body sump "Clean Out door(s)" |
| Roof-mtd. cable-reever ("2-10") | Automatic Tailgate Locks Option |
| Cart Tipper hydrau circuits & instal | Sling-Lift (2 yard) for containers |



LEGACY 3 on TANDEM's

mid range rearloader
on Tandem Axle Chassis



DIMENSIONAL SPECIFICATIONS

LEGACY "SHORTS"...(aka "H" bodies)

| 1 | BODY VOLUME (& "TYPE") → | 20 YD ³ | Ⓜ 20 YD ³ | Ⓜ 25 YD ³ |
|----|---------------------------------------|--------------------|----------------------|----------------------|
| Ⓜ | HEIGHT ABOVE CHASSIS FRAME | 90 | 95 1/2 | 95 1/2 |
| Ⓜ | DEPTH OF HOPPER | 19 | 19 | 19 |
| Ⓜ | HOPPER BELOW CHASSIS FRAME | 25 1/2 | 25 1/2 | 25 1/2 |
| Ⓜ | HOPPER INSIDE WIDTH | 80 | 80 | 80 |
| Ⓜ | HOPPER OPENING HEIGHT | 60 | 60 | 60 |
| Ⓜ | OVERALL LENGTH | 298 | 247 | 268 |
| Ⓜ | OVERALL WIDTH | 96 | 96 | 96 |
| Ⓜ | REAR OF BODY TO REAR OF TAILGATE | 80 | 75 | 75 |
| 10 | APPROX BODY WEIGHT | 12,900 LBS | 12,300 LBS | 13,100 LBS |
| 11 | LOAD SILL BELOW CHASSIS FRAME | 2 1/2 INCH | 2 1/2 INCH | 2 1/2 INCH |
| 12 | HOPPER CAPACITY | 3 YD ³ | 3 YD ³ | 3 YD ³ |
| 13 | HEIGHT ABOVE FRAME (WITH GATE RAISED) | 174 | 174 | 174 |

LEGACY "SHORTS"...(aka "H" bodies)

This Product Data Sheet is ONLY ONLY for Legacy's that are to be mounted on TANDEM axle Chassis.

FOR ANY "20/ 25 YARD" LEGACY 3....MOUNTED ON A "TANDEM" CHASSIS

- A) "ORDER" THE OPTION CALLED "1 1/2" LOWER'D LOADSILL" < OPTION 3311023 >
B) ORDER ALSO SPECIAL XTRA LONG TANDEM-STYLE "SPILL" CHUTE 0022041

LOADMASTER reserves the right to revise product specifications.

This "DATA SHEET" is "informational" only.
Consult with your LOADMASTER dealer prior to ordering...for final specifications.

For "CT"...assure Clear & Useable per this info.
(If EXHAUST stack is "consuming" space... then "account" for EXHAUST when you are "specing" Chassis.)

| !! TANDEM AXLE !! CHASSIS RECOMMENDATIONS | MINIMUM GVWR | MINIMUM FRONT GAWR | MINIMUM REAR GAWR | CT | MINIMUM AF |
|----------------------------------------------|--------------|--------------------|-------------------|----------------------|------------|
| → 20 YD ³ | 42,000 | 10,000 | 32,000 | 150" MIN 156" MAX | 24" |
| Ⓜ "SHORT" 20 YD ³ | 42,000 | 10,000 | 32,000 | 134" MIN 138" MAX | 24" |
| Ⓜ "SHORT" 25 YD ³ | 46,000 | 10,000 | 36,000 | 156" MIN 160" MAX | 24" |

LOADMASTER

loadmaster@loadmaster.org
800-433-2768

100 west eleventh avenue
po box 186
Norway, Michigan 49870-0186
fax 906-563-9800 fax

AUG 30, 2010

LEGACY 3 on Tandem Axle Chassis "BASE-PRODUCT" SPECS

Material Specifications-Body (20 & Short H20, Short H25)

| | |
|-------------------------------------------------------------|--------------------------------|
| Body sides | 8 ga. Gr80 high tensile |
| Body floor | 7 ga. high tensile |
| Body roof | 10 ga. high tensile |
| Floor longitudinals | 3" x 10" x 3/16" boxed channel |
| Ejector's track channel | ¼" "hat" channel- elevated |
| Body structural upgrades available (thicknesses and alloys) | |

Material Specifications-Tailgate (3-yard hopper)

| | |
|-----------------------------------------------------------------|------------------------------------|
| Lower tailgate sides | 3/16" T-1 (150ksi yield) |
| Upper tailgate sides | 7 ga. high tensile in "sweep" zone |
| | 10ga. high tensile above |
| Hopper floor | 3/16" T-1 alloy |
| Separator panel | 3/16" AR235 abrasion resistant |
| Tailgate structural upgrades available (thicknesses and alloys) | |

Material Specifications-Blades

| | |
|-----------------------------------------------------------------------------------------------------|---------------------------------------------------|
| Ejector's face panel | 10 ga. high tensile (3/16" gr50 for Short body's) |
| Ejector's reinforces | ¼" high tensile |
| Ejector's shoes | UHMW polyethylene |
| Sweep's face panel | 3/16" T-1 alloy (150ksi yield) |
| Sweep pusharms | ½" high tensile |
| Slide face blade | 7 ga. high tensile |
| Blade's wrist pin & axle | 2 1/2" medium carbon cold finished |
| Slider's shoeing | 3/8" thick aluminum-bronze |
| (Note: for the "H" body (short) Legacy3 Ejector material specs...see the Excel-S ejector materials) | |

Hydraulic Specifications

| | | | |
|---------------------|-------------------------------------------|-------------------------|---------------------------|
| Reservoir | 30 gallon (36 gallon for the "H" Body's) | Sweep cylinders (2) | 4 ½" bore |
| Pump | Direct-couple PTO-OR-crank driven (Front) | Slider cylinders (2) | 4 ½" bore |
| Pump flow | 30-33 gallons per minute | Gate lift cylinders (2) | 3 1/2" single acting |
| Max system pressure | 3200 psi | Ejector telescopic (1) | 4-stage (6.5/5.5/4.5/3.5) |
| Suction filter | 100 mesh | Body-mounted valve | 2 function sectional |
| Return filter | 15 micron <i>microglass</i> tank-top | Tailgate-mtd. valve | 2 function sectional |

Electrical Specifications

| | | | |
|------------------|-------------------------------|----------|--------------------------------|
| Wire | 14ga sxl | Switches | "grouped rockers; in cab panel |
| Wire identifiers | color & function labeling | Lights | LED grommet-mounted style |
| Harnessing | multi-section; braid covering | | (except BackUp lights... |
| Harness connects | Deutsch aircraft type | | Back-Up LED is a Option) |
| Wire connects | heat shrink sealed | | |

Some standard features

| | |
|------------------------------------|---------------------------------------|
| Epoxy primer paint | Regeneration for Slider "down" travel |
| Undercoating | Cushioned slide and sweep cylinders |
| Manual tailgate turnbuckle latches | Fully accessorized oil reservoir |
| Body access door with ladder | Bolt-on riding steps |
| Full complement of lights | Rear tailgate-mounted mudflaps |
| Quick change shoeing | Color coded control levers |

Some available options

| | |
|--------------------------------------|--------------------------------------------|
| Hot shift and air shift PTOs | Tool box |
| Work lights/ Strobe lights | "Customer-preferred" choices |
| "ClearStep" Roll Bar (3 yard) | Lower'd Load-Sill (1-1/2" <i>lower'd</i>) |
| Drum winch for containers | |
| Roof-mtd. cable-reever ("2-10") | Automatic Tailgate Locks Option |
| Cart Tipper hydrau circuits & instal | Sling-Lift (2 yard) for containers |

