

BRUSH HAWG®

C-MODEL (MULTI-LEVER)



**Shown with optional equipment*

STANDARD FEATURES

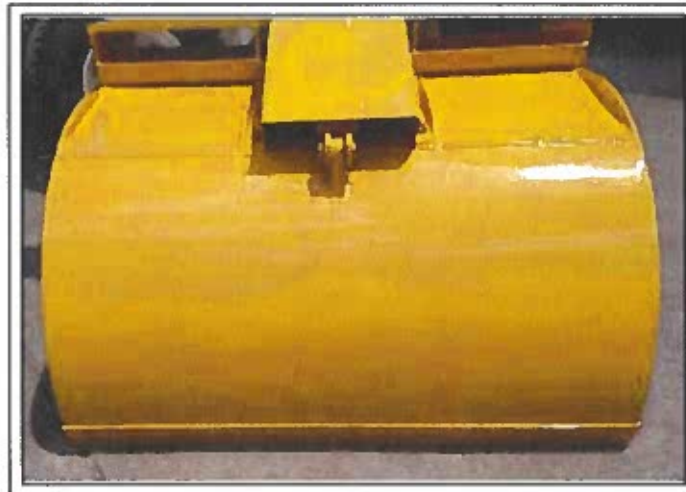
- Heavy Duty 30" Diameter Slewing Ring Bearing
- 2-Stage Planetary Gear Box and Disc-Valve Motor
- 20'-8" Overall Reach
- Boom Designed to Enhance Below Grade Reach
- Dual Stand-Up Operator Stations w/ Multi-Lever Controls
- 4-Way Adjustable Stabilizers w/ Dual Holding Valves on Vertical Cylinders
- 48" x 60" Bucket
- 15 Ton Scissor Hoist
- 5 Micron Synthetic Drop-In Return Filter
- 18' Dump Body w/ 24" Walk-Through



**Multi-Lever
Controls**



**Bolt-On Bucket Cylinder
Covers & Reversible
Bolt-On Bucket Edges**



**Tip Boom
Hose Retract Box**



BRUSH HAWG®

P.O. Box 1527 ♦ Easley, South Carolina 29641

2266 Powdersville Road ♦ Easley, South Carolina 29642

1-800-654-1752 ♦ Fax: (864) 306-3775

Email: sales@brushhawg.com ♦ Website: www.brushhawg.com

All designs and specifications are subject to change at the manufacturer's sole discretion at any time without notice. The data published here is informational in nature and should not be misconstrued to warrant suitability of the unit for any purpose as performance may vary with the conditions encountered. Products must be installed and operated with all applicable standards, codes, regulations, and recommended safety procedures.



Peterbilt Of Wisconsin (P123)
820 Silvenail Rd. Suite A
Pewaukee, Wisconsin 53072

Public Works Equip & Supply
4659 Old Charlotte H
Monroe, North Carolina 28215
United States of America

Todd Roskopf
Cell Phone:
Office Phone: (262)547-0001
Email: troskopf@jxe.com

Vehicle Summary

Unit		Chassis	
Model:	Model 337	Fr Axle Load (lbs):	12000
Type:	Full Truck	Rr Axle Load (lbs):	21000
Description 1:	NCSA	G.C.W. (lbs):	33000
Description 2:	Reference 723136 Model 337 33,000 GVW		
Application		Road Conditions:	
Intended Serv.:	Refuse/On-Highway	Class A (Highway)	100
Commodity:	Refuse, Scrap, Recycling	Class B (Hwy/Mtn)	0
		Class C (Off-Hwy)	0
		Class D (Off-Road)	0
Body		Maximum Grade:	
Type:	Other Body Type		6
Length (ft):	20	Wheelbase (in):	256
Height (ft):	10	Overhang (in):	124.8
Max Laden Weight (lbs):	1000	Fr Axle to BOC (in):	69.8
		Cab to Axle (in):	186.2
Trailer		Cab to EOF (in):	311
No. of Trailer Axles:	0	Overall Comb. Length (in):	419
Type:		Special Req.	
Length (ft):	0		
Height (ft):	0		
Kingpin Inset (in):	0		
Corner Radius (in):	0		
Restrictions			
Length (ft):	40		
Width (in):	102		
Height (ft):	13.5		

Approved by: _____

Date: _____

Note: All sales are F.O.B. designated plant of manufacture.



Std/ Opt	Description	Weight
Base Model		
S	Model 337 The Peterbilt Model 337 is built to take on the big jobs. That's why it's available as a Class 7 truck or tractor with a GVW up to 33,000 lbs. With a full range of suspensions and in an all-wheel-drive configuration, the 337 delivers an ideal match for applications such as wrecker, tanker, beverage delivery, municipal utilities – just about any job you can throw at it.	10,070
O	Refuse, Scrap, Recycling	0
O	Refuse/On-Highway Truck or tractor which hauls refuse, recycled material, etc. Includes roll-on/roll-off container movement, as well as hauling refuse from transfer stations to, but not into, landfills.	0
O	Other Body Type	0
S	United States Registry Canadian Registry Package Requires Air Conditioning Excise Tax Canada, Speedometer to be KPH ipo MPH, Daytime Running Lights and Rubber Battery Pad in Bottom of Battery Box.	0
Configuration		
S	Not Applicable Secondary Manufacturer	0
Frame & Equipment		
O	10-5/8" Steel Rails 385-444" 10.625 x 3.45 x .313 Dimension, 1,776,000 RBM; Yield Strength: 120,000 psi. Section Modulus: 14.8 cubic inches. Weight: 1.44 lbs/inch pair	521
O	256" Wheelbase	0
S	EOF Square without Crossmember End-of-frame square without crossmember. For use with body builder installed crossmember.	0
S	Omit Rear Mudflaps and Hangers	0
Front Axle & Equipment		
O	Dana Spicer E1202IL 12,000 lb, 3.5 in. Drop Axle is designed for applications with a gross axle weight rating (GAWR) of 12,000 lb. The axles have exclusive one-piece forged design knuckle including steer arm, tie rod arm and spindle. This feature helps in greater durability and reduced maintenance.	0
O	Taper Leaf Springs, Shocks 12,000 lb Hendrickson taper leaf springs, shocks for 12,000 lbs.	0
S	Power Steering Sheppard HD94	0



Std/ Opt	Description	Weight
	Sheppard HD94 power steering gear is a light weight version of heavy duty line-haul power steering gear. For use with 10,000 to 13,200 lb. axle ratings.	
O	Power Steering Reservoir Frame Mounted The power steering reservoir is a steering system that eases drivability by applying hydraulic pressure to the steering gear.	0
O	PHP10 Aluminum PreSet Hubs	0
O	Dana Spicer Wide Track IPO Standard Dana Spicer wide track front axles offer added stability and deliver greater turn angles. 71in KPI IPO 69in for E1202, E1322, E1462, D2000F front axles.	15
S	Bendix Air Cam Front Drum Brakes 16.5x5 For use with 10,000 lbs to 14,600 lbs steer axles. Includes automatic slack adjusters & outboard mounted brake drums.	0
S	Gusseted Cam Brackets, Steer Axle	0
Rear Axle & Equipment		
O	Dana Spicer S21-172 Single Axle, 21000 lb	250
O	PHP10 Aluminum PreSet Hubs	0
U	Rear Brake Camshaft Reinforcement	9
O	Gusseted Cam Brackets, Drive Axle(s)	2
S	SBM Valve Full trucks require a spring brake modulation (SBM) system for emergency braking application. This system requires an SBM valve and a relay valve with spring brakes on the rear axles. The SBM valve allows the foot valve to operate the rear axle spring brakes if a failure exists in the rear air system.	0
O	Upsize Parking Brakes	0
S	Stability System Not Selected Or Not Available	0
S	Single Drive Axle (Model 337)	0
S	Anti-Lock Braking System (ABS) 4S4M ABS-6. Includes air braking system.	0
S	Synthetic Axle Lubricant All Axles Peterbilt heavy duty models include Fuel Efficient Cognis EMGARD FE75W-90 which provides customers performance advantages over current synthetic lubricants with reduced gear wear and extended maintenance intervals, resulting in increased uptime. In addition, the lubricant provides improved fluid flow to protect gears in extreme cold conditions and withstand the stress from high temperatures, extending component life.	0
O	Bendix Air Cam Rear Drum Brakes 16.5x8.6	0



Std/ Opt	Description	Weight
	Bendix Air Cam Rear Drum Brakes to fit all heavy haul, construction, refuse and highway truck and tractor applications. Includes Automatic Slack Adjusters & Outboard Mounted Brake Drums. Refer to TSB 11-57 for more information.	
O	Ratio 5.38 Rear Axle	0
O	Reyco 79KB Multi Leaf 23,000 Lb	30

Engine & Equipment

O	PACCAR PX-7 250@2400 GOV@2600 660@1600 Efficiency (2021 Emissions)	-564
	N21350 C121 75....Maximum Accelerator Pedal Ve N21370 C128 75....Maximum Cruise Speed (P059) N21460 C132 1400..Max PTO Speed (P046) N21520 C133 5.....Timer Setting (P030) N21610 C188 39....Low Ambient Temperature Thre N21620 C189 60....Intermediate Ambient Tempera N21630 C190 80....High Ambient Temperature Thr N21550 C206 100...Engine Load Threshold (P516) N21340 C209 120...Hard Maximum Speed Limit (P1 N21510 C225 NO....Enable Idle Shutdown Park Br N21450 C231 NO....Gear Down Protection (P026) N21570 C233 NO....Idle Shutdown Manual Overrul N21440 C234 NO....Engine Protection Shutdown (N21480 C238 NO....Auto Engine Brake in Cruise N21470 C239 NO....Cruise Control Auto Resume (N21430 C333 0.....Reserve Speed Limit Offset (N21410 C334 0.....Maximum Cycle Distance (N202 N21590 C382 YES...Enable Hot Ambient Automatic N21500 C395 0.....Expiration Distance (N209) N21530 C396 YES...Enable Impending Shutdown Wa N21540 C397 60....Timer For Impending Shutdown N21320 C399 120...Standard Maximum Speed Limit N21400 C400 252...Reserve Speed Function Reset N21420 C401 10....Maximum Active Distance (N20 N21330 C402 0.....Expiration Distance (N207)	
O	Engine Idle Shutdown Timer Disabled	0
O	Enable EIST Ambient Temp Override	0
	Eff EIST NA Expiration Miles	0
	Effective VSL Setting NA	0
O	Typical Operating Speed 68 MPH	0
O	Powertrain Optimized for Balance	0



Std/ Opt	Description	Weight
	Best analysis for vehicles where service includes frequent start and stop cycles.	
O	Remote PTO and Throttle Provision 12-pin connector on engine harness.	0
S	CARB Engine Idling Compliance PACCAR PX-7, PX-9 and MX, Cummins X15 and ISX diesel engines will include the required factory installed serialized sticker on the drivers door to identify them as meeting the NOx idling standard.	0
O	Remote Throttle/PTO Control Switch & Wiring BOC W/ Park Brake	0
S	PACCAR 160 Amp Alternator, Brushed PACCAR 160 AMP alternator, brushed producing 160 Amps at road speed and 100 Amps at idle.	0
O	Immersion Type Block Heater 110-120V Standard location for 2.1M and 1.9M models is left-hand under cab, Model 520 is in bumper, and for Model 220 it is at the driver step. Plug includes a weather-proof cover that protects the receptacle. This pre-heater keeps the coolant in the engine block from freezing when the engine is not running.	2
S	PACCAR 12V Starter, N/A PACCAR MX Engines PACCAR 12-volt electrical system. With centralized power distribution incorporating plug-in style relays. Circuit protection for serviceability, 12-volt light system w/circuit protection circuits number & color coded.	0
S	2 PACCAR Premium 12V Starting Batteries 2000 CCA Threaded stud type terminal. Stranded copper battery cables are double aught (00) or larger to reduce resistance.	0
O	Battery Disconnect Switches (2) Mounted in Cab LH Side of Driver Seat	9
O	2-Speed Fan Clutch For Frequent Start/Stops A 2-speed fan clutch is ideal for vocational applications where the fan clutch engagement time exceeds 10% of the engine run time. When the fan clutch is disengaged, the fan still rotates at 15-25% of the engine RPM. This fan rotation provides crucial airflow to the engine and draws virtually no horsepower.	0
S	18.7 CFM Air Compressor N/A X15. Furnished on engine. Teflon lined stainless steel braided compressor discharge line.	0
S	Spin-On Fuel/Water Separator	0
S	No Fluid Heat Option for Fuel Filter	0
O	12V Heat for Fuel Filter Fuel filter heaters help ensure a seamless flow of diesel from the tank to the combustion chamber. Eliminating any possibility of moisture freezing within the fuel filter while simultaneously increasing the fuel temperature for atomization within the engine.	0
O	Engine Protection Shutdown w/ Label Includes oil pressure, oil temperature, coolant temperature, and intake manifold temperature.	0
S	High Efficiency Cooling System	0



Std/ Opt	Description	Weight
	Cooling module is a combination of steel and aluminum components, with aluminum connections to maximize performance and cooling capability. Silicone radiator & heater hoses enhance value, durability, & reliability. Constant tension band clamps reduce leaks. Chevron Delo Extended Life Coolant (NOAT) extends maintenance intervals reducing maintenance costs. Anti-freeze effective to -30 degrees F helps protect the engine. Low coolant level sensor warns of low coolant condition to prevent engine damage. Radiator Size by Model: 579/367 FEPTO 1325 sq in, 567/365/367: 1440 sq in, 365 FEPTO: 1184 sq in, 389/367 HH: 1669 sq in, 348: 1000 sq in, 520: 1242 sq in.	
S	Radial Seal, Dry Type Air Cleaner, Frontal Air Intake. Molded rubber air intake connections with lined stainless steel clamps seal to prevent contaminants in air intake.	0
O	Exhaust Single RH Horizontal DPF/SCR RH Under Frame.	-158
O	DPF Regeneration Switch Remove Stop Position	0
Transmission & Equipment		
O	Allison 3000 RDS-P Transmission, Gen 5 Rugged Duty Series. Includes Rear Transmission Support except on MX engines, Mobil Delvac Automatic Transmission Fluid, and Water-Oil Heat Exchange. Also includes features that monitor the transmission fluid, filter and clutch condition. Will display percent life remaining for the transmission fluid, filter and clutches on the shift selector. This information may be displayed using the Mode and Up and Down buttons. A wrench icon will also be included to indicate when the transmission fluid, filter or clutches need servicing. Suited for vehicles operating on/off highway and/or requiring PTO operation. Forward ratios: 1st-3.49, 2nd-1.86, 3rd-1.41, 4th-1.00, 5th-0.75, 6th-0.65. Reverse ratios: DR-(5.03).	195
O	SPL170 HD-XL Driveline, 2 Midship Bearings	125
O	Auto Neutral Activates With Parking Brake Auto Neutral helps improve jobsite safety by reducing the possibility of the truck moving due to throttle application.	0
O	Allison FuelSense 2.0 Basic Features include: EcoCal shift technology keeps the engine speed at the most efficient level and DynActive Shifting system incorporates a learning algorithm that selects variable shift points to find the ideal balance of fuel economy and performance, based upon the vehicle specifications and environmental parameters. This is valuable for applications with heavy start-stop needs like refuse, city delivery, and construction.	0
O	Omit Allison Neutral At Stop	0
O	Allison 6-Speed Configuration, Close Ratio Gears 3000 Series Transmissions.	0
O	Dash Mounted Push Button Shifter Available with Allison transmissions	0



Std/ Opt	Description	Weight
O	Rolling Direction Change Shift Inhibit Feature Allison transmissions. A programmable feature that keeps the transmission from shifting from Drive to Reverse or from Reverse to Drive above a preset speed. This wireless function is enabled when a switch is closed to complete the circuit between input wire 101 and ground. Frequently the function is interfaced with a switch indicating activation of another vehicle function, such as application of the service brakes. When the function is enabled, the TCM will recognize the request for a direction change shift, Reverse-to-Drive or Drive-to-Reverse. If all other operating conditions are acceptable, the TCM will command the requested shift. The enable remains in effect until the switch is opened, followed by the selection of a different direction, Reverse or Drive, at the shift selector. This could be used for doc spotters and refuse. If the function is not enabled, any shift which results in a change of direction is inhibited.	0
Air & Trailer Equipment		
O	Bendix AD-HF EP Air Dryer, Heater Coalescing filter, extended purge. Bendix AD-HF air filters protects the life of your engine system and components. Proven PuraGuard oil coalescing technology in the the air dryer cartridge. This oil coalescing filter ensures the removal of oil and oil aerosols before they can contaminate the moisture removing desiccant.	-2
O	Pull Cords All Air Tanks	0
S	Nylon Chassis Hose	0
S	Steel Painted Air Tanks All air tanks are steel with painted finish except when Code 4543330 Polish Aluminum Air Tanks is also selected (then exposed air tanks outside the frame rails will be polished aluminum). Peterbilt will determine the optimal size and location of required air tanks. Narratives requesting a specific air tank size or location will not be accepted for factory installation. See ECAT to determine number or location of air tanks installed.	0
O	High Mount Air Tanks BOC/BOS Where Possible Subject to frame review	0
O	Body Lighting Junction Box Without Wiring Located at EOF	3
O	7-Way Electric Harness, Socket Mounted EOF	11
Tires & Wheels		
O	FF: BR 14ply 11R22.5 R268 Ecopia Efficiency Rating: Poor R268 tread is not a Line Haul tire and is only for Pickup and Delivery or Regional use. Diameter = 41.5 inches; SLR = 19.3 inches	8
O	RR: BR 14ply 11R22.5 R284 Ecopia Efficiency Rating: Optimal	-8



Std/ Opt	Description	Weight
O	Code-rear Tire Qty 04	0
O	FF: Alcoa 882677 22.5 X 8.25 High Polish Aluminum	-50
O	RR: Accu-Lite Steel Armor 51487PK/Alcoa 882677 Steel inner/aluminum outer high polish finish 22.5 X 8.25. High polish finish on both sides as applicable. Finish options for heavy-duty trucks, 2.5 lbs. weight savings, new hub bore with less metal to metal contact to hinder corrosion with a maintained half dual space and load rating.	-48
O	Code-rear Rim Qty 04	0
O	Wheel Guards, Single Axle Wheel guards provide a protective barrier to maintain the integrity between the brake drums and wheels to ensure the maximum life for your polished wheels.	0
O	FF: Mirror Polish Wheels, Outer Surface Single/tandem steer. Mirror Polish outer surface of outer wheel. Without chrome wheel nuts.	0
O	RR: Mirror Polish Wheels, Outer Surface, Single Drive without chrome wheel nuts. Mirror polish outer surface of outer wheel.	0
O	Wheel Guards, Single Axle Wheel guards provide a protective barrier to maintain the integrity between the brake drums and wheels to ensure the maximum life for your polished wheels.	0

Fuel Tanks

O	26" Aluminum 50 Gallon Fuel Tank LH U/C Includes steps for cab access. Paddle handle filler cap with threadless filler neck. Top draw fuel plumbing reduces chance of introducing air into the fuel system during low fuel level conditions due to the central placement of fuel pickup tube. Wire braid fuel lines increase durability & reduce potential for leaks.	-119
O	Location LH U/C 50 Gallon	0
O	DEF Tank Mounted LH Under Cab	0
O	DEF To Fuel Ratio 2:1 Or Greater	0
O	DEF Tank Small, HD 14 Gal 2.1M MD 5.5 Gal	0

Battery Box & Bumper

O	Aluminum Battery Box RH Under Cab, Non-Slip Step	-55
O	Steel Styled Aero Bumper Painted Black Two tow points	0



Std/ Opt	Description	Weight
Cab & Equipment		
S	Alum Cab 108in BBC Metton Hood w/Bright Crown Includes view window RH door and convex mirror over RH door.	0
O	Thermal Insulation Package in Cab Includes thick, closed-cell foam in floor, special mylar-faced foam in walls and roof structure.	2
O	Rubber Fender Lips 2" Wide	8
S	National Driver Seat Increased comfort with more foam in critical areas, better lumbar support, improved adjustability and suspension with toggle link design.	0
S	(2) Person Passenger Seat	0
O	Drivers Armrests - LH & RH	4
O	Black Seat Color IPO Standard Color	0
O	Seat Belt Color Orange IPO Standard Black	0
O	Air Ride Driver	0
S	High Back Driver	0
S	Vinyl Driver	0
S	Non-Air Ride Passenger	0
S	Low Back Passenger	0
S	Vinyl Passenger	0
S	Adjustable Steering Column - Tilt Only	0
S	Steering Wheel With Peterbilt Logo Steering Wheel with embossed Peterbilt logo over horn button.	0
S	Interior Gray/Black Includes rugged charcoal instrument panels, glare-resistant gray dash, black bezels on gauges, (2) power ports, monochromatic molded door pads with durable in-mold color, gray molded back wall, 18 inch 4-spoke soft-touch steering wheel, soft-touch steering column cover, power lift passenger window, extruded rubber floor covering, header-mounted dome light, foot well lighting, integrated "dead pedal", (4) inside entry grab handles, (2) inside sunvisors, (2) coat hooks, (2) cup holders and map bin in dash.	0
O	Dark Window Tint IPO Standard Tint - Day Cab	0
O	Extended Rear Window ipo Std Window-Day Cab	18



Std/ Opt	Description	Weight
	The extended rear window protrudes two inches more than the standard conventional rear cab window. Take this into consideration when determining your loadspace.	
S	Day Cab Rear Window Day cab rear window flush to back of cab.	0
S	1-Piece Curved Windshield	0
S	Combo Fresh Air Heater/Air Conditioner With radiator mounted condenser, dedicated side window defrosters, Bi-Level Heater/Defroster Controls, 54,500 BTU/HR, and silicone heater hoses.	0
O	Peterbilt Comfort Control - Cab	6
O	Outside Sunvisor - Stainless Steel Not available with 2.1M high roof sleeper.	4
S	Stainless Steel Mirrors 7 x 16	0
O	(2) Convex 8 Inch SSTL Mirrors Center mounted under mirror bracket. If rear view mirrors are heated, the convex mirrors will be heated. Option includes dual door stops.	4
S	Power Package Includes power door locks and power windows.	0
O	(1) Air Horn 15" Painted Mounted under cab.	8
O	ConcertClass, AM/FM, Weatherband, 3.5 Aux	10
O	Standard Speaker Package For Cab (2) Speakers	4
O	Bluetooth Phone and Audio Requires USB Port	0
O	USB Port	0
O	CB Terminals/Wiring Mounted Under Header	0
O	(1) 48" CB Antenna	1
O	CB Antenna Mounting, LH Mirror Available with Rami only on 1.9m, available without Rami on medium duty	1
O	Radio Antenna Mounted Logger Style Antenna Mounted LH on BOC In Place of Center Roof position on Conventional Models. Models 579 and 567 Antenna Mounted LH Roof In Place Of Center Roof position.	2
O	Plug-In Auto Reset Circuit Breaker in place of fuses in junction box.	0
S	Peterbilt Electric Windshield Wipers With Intermittent Feature.	0
O	Triangle Reflector Kit, Ship Loose	13



Std/ Opt	Description	Weight
	Florescent triangle emergency road flares are designed to meet and exceed all DOT standards.	
O	Fire Extinguisher, Cab Mounted Hazmat approved UL listed/rated ABC	8
O	Backup Alarm Wiring To EOF	0
O	Main Transmission Oil Temperature Gauge Located in Driver Information Display	0
S	Air Restriction Indicator Mounted on air cleaner, intake piping, or firewall	0
S	Main Instrumentation Panel, Graphics Display Includes speedometer with trip odometer, tachometer with hourmeter and outside air temperature display, voltmeter, engine oil pressure, engine coolant temperature, fuel level, primary and secondary air pressure gauges. Includes standard warning light package: high water temperature, low oil pressure, and low air pressure warning lights with audible alarms, high beam, turn signal, low fuel, parking brake, and ice warning indicators; seat belt reminder; rocker switches with long-life LED indicators; multi-function turn stalk with flash-to-pass feature (night mode flashes headlights and marker lights; day mode flashes headlights only), intermittent windshield wiper and headlamp beam control. Hydraulic braked trucks do not include air pressure gauges.	0
S	Headlights Composite Fender Mounted Integral park, turn, and side marker	0
S	(5) Marker Lights, Aero LED	0
O	Daytime Running Lights The brake interlock turns the daytime running lights off when the parking brakes are engaged. This is required on all Canadian vehicles.	0
S	Incandescent Square Stop/Turn/Tail/Backup Left-hand / right-hand square end of frame or dropped a-brace	0
O	(1) F/O Load Light, Switch, 10' Wire Coil Under / in cab / sleeper baggage compartment	2
Paint		
O	Standard Paint Color Selection	0
S	(1) Color Axalta Two Stage - Cab/Hood Base Coat/Clear Coat N85020 A - L0006EY WHITE N85500 CAB ROOF L0006EY WHITE N85300 FENDER L0006EY WHITE N85200 FRAME L0001EA BLACK N85400 HOOD TOP L0006EY WHITE	0
Shipping Destination		
Options Not Subject To Discount		
S	Peterbilt Class 7 Standard Coverage	0