

# **BRUSH HAWG®**

## **C-MODEL** Mounted on a Freightliner Chassis

### **(MULTI-LEVER)**



*\*Shown with optional equipment*

### **STANDARD FEATURES**

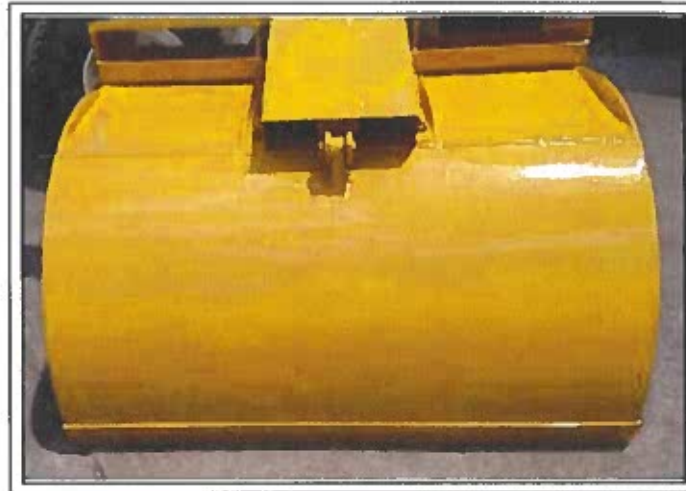
- Heavy Duty 30" Diameter Slewing Ring Bearing
- 2-Stage Planetary Gear Box and Disc-Valve Motor
- 20'-8" Overall Reach
- Boom Designed to Enhance Below Grade Reach
- Dual Stand-Up Operator Stations w/ Multi-Lever Controls
- 4-Way Adjustable Stabilizers w/ Dual Holding Valves on Vertical Cylinders
- 48" x 60" Bucket
- 15 Ton Scissor Hoist
- 5 Micron Synthetic Drop-In Return Filter
- 18' Dump Body w/ 24" Walk-Through



**Multi-Lever  
Controls**



**Bolt-On Bucket Cylinder  
Covers & Reversible  
Bolt-On Bucket Edges**



**Tip Boom  
Hose Retract Box**



# **BRUSH HAWG®**

**P.O. Box 1527 ♦ Easley, South Carolina 29641**

**2266 Powdersville Road ♦ Easley, South Carolina 29642**

**1-800-654-1752 ♦ Fax: (864) 306-3775**

**Email: [sales@brushhawg.com](mailto:sales@brushhawg.com) ♦ Website: [www.brushhawg.com](http://www.brushhawg.com)**

All designs and specifications are subject to change at the manufacturer's sole discretion at any time without notice. The data published here is informational in nature and should not be misconstrued to warrant suitability of the unit for any purpose as performance may vary with the conditions encountered. Products must be installed and operated with all applicable standards, codes, regulations, and recommended safety procedures.

## SPECIFICATION PROPOSAL

Description	
Price Level	
	M2 PRL-27M (EFF:MY24 ORDERS)
Data Version	
	SPECPRO21 DATA RELEASE VER 036
Vehicle Configuration	
	M2 106 CONVENTIONAL CHASSIS
	2024 MODEL YEAR SPECIFIED
	SET BACK AXLE - TRUCK
	STRAIGHT TRUCK PROVISION
	LH PRIMARY STEERING LOCATION
General Service	
	TRUCK CONFIGURATION
	DOMICILED, USA (EXCLUDING CALIFORNIA AND CARB OPT-IN STATES)
	REFUSE SERVICE
	SERVICES BUSINESS SEGMENT
	DRY BULK COMMODITY
	TERRAIN/DUTY: 100% (ALL) OF THE TIME, IN TRANSIT, IS SPENT ON PAVED ROADS
	MAXIMUM 8% EXPECTED GRADE
	SMOOTH CONCRETE OR ASPHALT PAVEMENT - MOST SEVERE IN-TRANSIT (BETWEEN SITES) ROAD SURFACE
	MEDIUM TRUCK WARRANTY
	EXPECTED FRONT AXLE(S) LOAD : 12000.0 lbs
	EXPECTED REAR DRIVE AXLE(S) LOAD : 21000.0 lbs
	EXPECTED GROSS VEHICLE WEIGHT CAPACITY : 33000.0 lbs

Description	
<b>Truck Service</b>	
	DUMPBODY
	NU LIFE
	EXPECTED BODY/PAYLOAD CG HEIGHT ABOVE FRAME "XX" INCHES : 32.0 in
<b>Engine</b>	
	CUM B6.7 250 HP @ 2400 RPM, 2600 GOV, 660 LB-FT @ 1600 RPM
<b>Electronic Parameters</b>	
	75 MPH ROAD SPEED LIMIT
	CRUISE CONTROL SPEED LIMIT SAME AS ROAD SPEED LIMIT
	PTO MODE ENGINE RPM LIMIT - 1100 RPM
	PTO MODE BRAKE OVERRIDE - SERVICE BRAKE APPLIED
	PTO RPM WITH CRUISE SET SWITCH - 1100 RPM
	PTO RPM WITH CRUISE RESUME SWITCH - 950 RPM
	PTO MODE CANCEL VEHICLE SPEED - 5 MPH
	PTO GOVERNOR RAMP RATE - 250 RPM PER SECOND
	ONE REMOTE PTO SPEED
	PTO SPEED 1 SETTING - 950 RPM
	PTO MINIMUM RPM - 700
	REGEN INHIBIT SPEED THRESHOLD - 5 MPH
<b>Engine Equipment</b>	
	2010 EPA/CARB/GHG21 CONFIGURATION
	NO 2008 CARB EMISSION CERTIFICATION
	STANDARD OIL PAN
	ENGINE MOUNTED OIL CHECK AND FILL
	SIDE OF HOOD AIR INTAKE WITH FIREWALL MOUNTED DONALDSON AIR CLEANER
	DR 12V 160 AMP 28-SI QUADRAMOUNT PAD ALTERNATOR WITH REMOTE BATTERY VOLT SENSE
	(2) DTNA GENUINE, FLOODED STARTING, MIN 1900CCA, 350RC, THREADED STUD BATTERIES
	BATTERY BOX FRAME MOUNTED
	STANDARD BATTERY JUMPERS
	SINGLE BATTERY BOX FRAME MOUNTED LH SIDE UNDER CAB

---

**Description**

WIRE GROUND RETURN FOR BATTERY CABLES  
WITH ADDITIONAL FRAME GROUND RETURN

NON-POLISHED BATTERY BOX COVER

POSITIVE AND NEGATIVE POSTS FOR  
JUMPSTART LOCATED ON FRAME NEXT TO  
STARTER

CUMMINS TURBOCHARGED 18.7 CFM AIR  
COMPRESSOR WITH INTERNAL SAFETY VALVE

STANDARD MECHANICAL AIR COMPRESSOR  
GOVERNOR

AIR COMPRESSOR DISCHARGE LINE

ELECTRONIC ENGINE INTEGRAL SHUTDOWN  
PROTECTION SYSTEM

CUMMINS ENGINE INTEGRAL BRAKE WITH  
VARIABLE GEOMETRY TURBO ON/OFF

RH OUTBOARD UNDER STEP MOUNTED  
HORIZONTAL AFTERTREATMENT SYSTEM  
ASSEMBLY WITH RH HORIZONTAL TAILPIPE

ENGINE AFTERTREATMENT DEVICE,  
AUTOMATIC OVER THE ROAD REGENERATION  
AND DASH MOUNTED REGENERATION  
REQUEST SWITCH

STANDARD EXHAUST SYSTEM LENGTH

RH STANDARD HORIZONTAL TAILPIPE

6 GALLON DIESEL EXHAUST FLUID TANK

100 PERCENT DIESEL EXHAUST FLUID FILL

LH MEDIUM DUTY STANDARD DIESEL EXHAUST  
FLUID TANK LOCATION

STANDARD DIESEL EXHAUST FLUID PUMP  
MOUNTING

STANDARD DIESEL EXHAUST FLUID TANK CAP

BORG WARNER VISCOUS FAN DRIVE

CUMMINS SPIN ON FUEL FILTER

FULL FLOW OIL FILTER

700 SQUARE INCH ALUMINUM RADIATOR

ANTIFREEZE TO -34F, OAT (NITRITE AND  
SILICATE FREE) EXTENDED LIFE COOLANT

GATES BLUE STRIPE COOLANT HOSES OR  
EQUIVALENT

CONSTANT TENSION HOSE CLAMPS FOR  
COOLANT HOSES

RADIATOR DRAIN VALVE

LOWER RADIATOR GUARD

PHILLIPS-TEMRO 750 WATT/115 VOLT BLOCK  
HEATER

**Description**

BLACK PLASTIC ENGINE HEATER RECEPTACLE  
MOUNTED UNDER LH DOOR  
ALUMINUM FLYWHEEL HOUSING  
ELECTRIC GRID AIR INTAKE WARMER  
DELCO 12V 29MT STARTER WITH INTEGRATED  
MAGNETIC SWITCH

**Transmission**

ALLISON 3500 RDS AUTOMATIC TRANSMISSION  
WITH PTO PROVISION

**Transmission Equipment**

ALLISON VOCATIONAL PACKAGE 142 -  
AVAILABLE ON 3000/4000 PRODUCT FAMILIES  
WITH VOCATIONAL MODEL RDS  
ALLISON VOCATIONAL RATING FOR ON/OFF  
HIGHWAY APPLICATIONS AVAILABLE WITH ALL  
PRODUCT FAMILIES  
PRIMARY MODE GEARS, LOWEST GEAR 1,  
START GEAR 1, HIGHEST GEAR 6, AVAILABLE  
FOR 3000/4000 PRODUCT FAMILIES ONLY  
SECONDARY MODE GEARS, LOWEST GEAR 1,  
START GEAR 1, HIGHEST GEAR 6, AVAILABLE  
FOR 3000/4000 PRODUCT FAMILIES ONLY  
S5 PERFORMANCE LIMITING PRIMARY SHIFT  
SCHEDULE, AVAILABLE FOR 3000/4000  
PRODUCT FAMILIES ONLY  
S1 PERFORMANCE SECONDARY SHIFT  
SCHEDULE, AVAILABLE FOR 3000/4000  
PRODUCT FAMILIES ONLY  
2600 RPM PRIMARY MODE SHIFT SPEED  
2400 RPM SECONDARY MODE SHIFT SPEED  
ENGINE BRAKE RANGE PRESELECT  
RECOMMENDED BY DTNA AND ALLISON, THIS  
DEFINED BY ENGINE AND VOCATIONAL USAGE  
ENGINE BRAKE RANGE ALTERNATE  
PRESELECT RECOMMENDED BY DTNA AND  
ALLISON, THIS DEFINED BY ENGINE AND  
VOCATIONAL USAGE  
DRIVER SWITCH INPUT - DEFAULT - NO  
SWITCHES  
VEHICLE INTERFACE WIRING CONNECTOR  
WITH BLUNT CUTS, AT BACK OF CAB  
ELECTRONIC TRANSMISSION CUSTOMER  
ACCESS CONNECTOR MOUNTED BACK OF CAB  
CUSTOMER INSTALLED CHELSEA 280 SERIES  
PTO

---

**Description**

---

PTO MOUNTING, LH SIDE OF MAIN  
TRANSMISSION ALLISON  
  
MAGNETIC PLUGS, ENGINE DRAIN,  
TRANSMISSION DRAIN, AXLE(S) FILL AND  
DRAIN  
  
PUSH BUTTON ELECTRONIC SHIFT CONTROL,  
DASH MOUNTED  
  
TRANSMISSION PROGNOSTICS - ENABLED 2013  
  
WATER TO OIL TRANSMISSION COOLER, IN  
RADIATOR END TANK  
  
TRANSMISSION OIL CHECK AND FILL WITH  
CROSSOVER TO CLEAR LH PTO AND DIRECT  
MOUNT PUMP  
  
SYNTHETIC TRANSMISSION FLUID (TES-295  
COMPLIANT)

**Front Axle and Equipment**

DETROIT DA-F-12.0-3 12,000# FF1 71.5 KPI/3.74  
DROP SINGLE FRONT AXLE  
  
MERITOR 16 5X5 Q+ CAST SPIDER CAM FRONT  
BRAKES, DOUBLE ANCHOR, PLATINUM SHIELD  
FABRICATED SHOES  
  
NON-ASBESTOS FRONT BRAKE LINING  
  
CONMET CAST IRON FRONT BRAKE DRUMS  
  
FRONT OIL SEALS  
  
VENTED FRONT HUB CAPS WITH WINDOW,  
CENTER AND SIDE PLUGS - OIL  
  
STANDARD SPINDLE NUTS FOR ALL AXLES  
  
BENDIX VERSAJUST AUTOMATIC FRONT SLACK  
ADJUSTERS  
  
TRW THP-60 POWER STEERING  
  
POWER STEERING PUMP  
  
2 QUART SEE THROUGH POWER STEERING  
RESERVOIR  
  
CURRENT AVAILABLE SYNTHETIC 75W-90  
FRONT AXLE LUBE

**Front Suspension**

12,000# DUAL TAPERLEAF FRONT SUSPENSION  
  
MAINTENANCE FREE RUBBER BUSHINGS -  
FRONT SUSPENSION  
  
FRONT SHOCK ABSORBERS

**Rear Axle and Equipment**

DETROIT DA-RS-21.0-4 21,000# R-SERIES  
SINGLE REAR AXLE  
  
5.88 REAR AXLE RATIO

**Description**

IRON REAR AXLE CARRIER WITH STANDARD  
AXLE HOUSING  
SPL170 XL DANA SPICER MAIN DRIVELINE WITH  
HALF ROUND YOKES  
MERITOR 16.5X7 Q+ CAST SPIDER CAM REAR  
BRAKES, DOUBLE ANCHOR, FABRICATED  
SHOES  
NON-ASBESTOS REAR BRAKE LINING  
BRAKE CAMS AND CHAMBERS ON FORWARD  
SIDE OF DRIVE AXLE(S)  
CONMET CAST IRON REAR BRAKE DRUMS  
REAR OIL SEALS  
WABCO TRISTOP D LONGSTROKE 1-DRIVE  
AXLE SPRING PARKING CHAMBERS  
BENDIX VERSAJUST AUTOMATIC REAR SLACK  
ADJUSTERS  
CURRENT AVAILABLE SYNTHETIC 75W-90 REAR  
AXLE LUBE

**Rear Suspension**

23,000# 52 INCH VARIABLE RATE MULTI-LEAF  
SPRING REAR SUSPENSION WITH LEAF  
SPRING HELPER  
SPRING SUSPENSION - NO AXLE SPACERS  
STANDARD AXLE SEATS IN AXLE CLAMP  
GROUP

**Brake System**

AIR BRAKE PACKAGE  
WABCO 4S/4M ABS  
REINFORCED NYLON, FABRIC BRAID AND WIRE  
BRAID CHASSIS AIR LINES  
FIBER BRAID PARKING BRAKE HOSE  
STANDARD BRAKE SYSTEM VALVES  
STANDARD AIR SYSTEM PRESSURE  
PROTECTION SYSTEM  
STD U.S. FRONT BRAKE VALVE  
RELAY VALVE WITH 5-8 PSI CRACK PRESSURE,  
NO REAR PROPORTIONING VALVE  
BW AD-9SI BRAKE LINE AIR DRYER WITH  
HEATER  
AIR DRYER MOUNTED UNDER HOOD  
STEEL AIR TANKS MOUNTED AFT INSIDE  
AND/OR BELOW FRAME JUST FORWARD OF  
REAR SUSPENSION, NO TRIPLE OR TORPEDO  
TANKS

**Description**

PULL CABLE ON WET TANK, PETCOCK DRAIN  
VALVES ON ALL OTHER AIR TANKS

**Trailer Connections**

UPGRADED CHASSIS MULTIPLEXING UNIT  
UPGRADED BULKHEAD MULTIPLEXING UNIT

**Wheelbase & Frame**

6550MM (258 INCH) WHEELBASE  
11/32X3-1/2X10-3/16 INCH STEEL FRAME  
(8.73MMX258.8MM/0.344X10.19 INCH) 120KSI  
3050MM (120 INCH) REAR FRAME OVERHANG  
FRAME OVERHANG RANGE: 111 INCH TO 120 INCH  
CALC'D BACK OF CAB TO REAR SUSP C/L (CA) :  
192.32 in  
CALCULATED EFFECTIVE BACK OF CAB TO  
REAR SUSPENSION C/L (CA) : 189.32 in  
CALC'D FRAME LENGTH - OVERALL : 416.95 in  
CALCULATED FRAME SPACE LH SIDE : 156.76 in  
CALCULATED FRAME SPACE RH SIDE : 139.93 in  
SQUARE END OF FRAME  
FRONT CLOSING CROSSMEMBER  
STANDARD WEIGHT ENGINE CROSSMEMBER  
STANDARD CROSSMEMBER BACK OF  
TRANSMISSION  
STANDARD MIDSHIP #1 CROSSMEMBER(S);  
FIRST MIDSHIP MOUNTED 36.0 INCHES BACK  
OF CAB  
STANDARD REARMOST CROSSMEMBER  
STANDARD SUSPENSION CROSSMEMBER

**Chassis Equipment**

THREE-PIECE 14 INCH CHROMED STEEL  
BUMPER WITH COLLAPSIBLE ENDS  
FRONT TOW HOOKS - FRAME MOUNTED  
BUMPER MOUNTING FOR SINGLE LICENSE  
PLATE  
FENDER AND FRONT OF HOOD MOUNTED  
FRONT MUDFLAPS  
HUCK-SPIN ROUND COLLAR CHASSIS  
FASTENERS

	Description
	CLEAR FRAME RAIL FROM BACK OF CAB TO FRONT REAR SUSPENSION BRACKET, RH RAIL INSIDE/OUTBOARD AND BELOW
<b>Fuel Tanks</b>	<p>50 GALLON/189 LITER SHORT RECTANGULAR ALUMINUM FUEL TANK - LH RECTANGULAR FUEL TANK(S) PLAIN ALUMINUM/PAINTED STEEL FUEL/HYDRAULIC TANK(S) WITH PAINTED BANDS FUEL TANK(S) FORWARD POLISHED STEP FINISH FUEL TANK CAP(S) DETROIT FUEL/WATER SEPARATOR WITH WATER IN FUEL SENSOR AND HAND PRIMER EQUIFLO INBOARD FUEL SYSTEM HIGH TEMPERATURE REINFORCED NYLON FUEL LINE</p>
<b>Tires</b>	<p>HANKOOK AL21 11R22.5 14 PLY RADIAL FRONT TIRES HANKOOK DL11 11R22.5 14 PLY RADIAL REAR TIRES</p>
<b>Hubs</b>	<p>CONMET PRESET PLUS PREMIUM IRON FRONT HUBS CONMET PRESET PLUS PREMIUM IRON REAR HUBS</p>
<b>Wheels</b>	<p>ACCURIDE 43644 ACCU-LITE 22.5X8.25 10-HUB PILOT 5.79 INSET ALUMINUM DISC FRONT WHEELS ACCURIDE 43644 ACCU-LITE ALUMINUM OUTSIDE, 28828 HD STEEL INSIDE, 22.5X8.25 10-HUB PILOT DISC REAR WHEELS FRONT WHEEL MOUNTING NUTS REAR WHEEL MOUNTING NUTS CHROME WHEEL NUT COVERS, METAL AND V2B DUAL SEAL INFLATOR CAPS, FRONT AND REAR</p>
<b>Cab Exterior</b>	106 INCH BBC FLAT ROOF ALUMINUM CONVENTIONAL CAB

---

**Description**

RUBBER CAB MOUNTS  
LH AND RH GRAB HANDLES  
HOOD MOUNTED CHROMED PLASTIC GRILLE  
CHROME HOOD MOUNTED AIR INTAKE GRILLE  
FIBERGLASS HOOD  
SINGLE 14 INCH ROUND HADLEY AIR HORN  
UNDER LH DECK  
SINGLE ELECTRIC HORN  
SINGLE HORN SHIELD  
REAR LICENSE PLATE MOUNT END OF FRAME  
INTEGRAL HEADLIGHT/MARKER ASSEMBLY  
WITH CHROME BEZEL  
LED AERODYNAMIC MARKER LIGHTS  
DAYTIME RUNNING LIGHTS  
OMIT STOP/TAIL/BACKUP LIGHTS AND PROVIDE  
WIRING FOR COMBINED STOP/TURN LIGHTS TO  
FOUR FEET BEYOND END OF FRAME  
STANDARD FRONT TURN SIGNAL LAMPS  
DUAL WEST COAST BRIGHT FINISH HEATED  
MIRRORS WITH LH AND RH REMOTE  
DOOR MOUNTED MIRRORS  
102 INCH EQUIPMENT WIDTH  
LH AND RH 8 INCH BRIGHT FINISH CONVEX  
MIRRORS MOUNTED UNDER PRIMARY  
MIRRORS  
STANDARD SIDE/REAR REFLECTORS  
COMPOSITE EXTERIOR SUN VISOR  
63X14 INCH TINTED REAR WINDOW  
TINTED DOOR GLASS LH AND RH WITH TINTED  
NON-OPERATING WING WINDOWS  
RH AND LH ELECTRIC POWERED WINDOWS  
1-PIECE SOLAR GREEN GLASS WINDSHIELD  
2 GALLON WINDSHIELD WASHER RESERVOIR  
WITHOUT FLUID LEVEL INDICATOR, FRAME  
MOUNTED

**Cab Interior**

OPAL GRAY CLOTH INTERIOR  
MOLDED PLASTIC DOOR PANEL  
MOLDED PLASTIC DOOR PANEL  
BLACK MATS WITH SINGLE INSULATION  
FORWARD ROOF MOUNTED CONSOLE WITH  
UPPER STORAGE COMPARTMENTS WITHOUT  
NETTING

---

**Description**

IN DASH STORAGE BIN  
(2) CUP HOLDERS LH AND RH DASH  
GRAY/CHARCOAL FLAT DASH  
5 LB. FIRE EXTINGUISHER  
HEATER, DEFROSTER AND AIR CONDITIONER  
STANDARD HVAC DUCTING  
MAIN HVAC CONTROLS WITH RECIRCULATION SWITCH  
STANDARD HEATER PLUMBING  
VALEO HEAVY DUTY A/C REFRIGERANT COMPRESSOR  
BINARY CONTROL, R-134A  
STANDARD INSULATION  
SOLID-STATE CIRCUIT PROTECTION AND FUSES  
12V NEGATIVE GROUND ELECTRICAL SYSTEM  
DOME LIGHT WITH 3-WAY SWITCH ACTIVATED BY LH AND RH DOORS  
DOOR LOCKS AND IGNITION SWITCH KEYED THE SAME  
KEY QUANTITY OF 2  
LH AND RH ELECTRIC DOOR LOCKS  
(2) 12 VOLT POWER RECEPTACLES MOUNTED IN DASH  
TRIANGULAR REFLECTORS WITHOUT FLARES  
BASIC ISRINGHAUSEN HIGH BACK AIR SUSPENSION DRIVERS SEAT WITH MECHANICAL LUMBAR AND INTEGRATED CUSHION EXTENSION  
2 MAN TOOL BOX MID BACK NON SUSPENSION PASSENGER SEAT, SEATS INC  
INBOARD DRIVER SEAT ARMREST, NO PASSENGER SEAT ARMREST  
LH AND RH INTEGRAL DOOR PANEL ARMRESTS  
BLACK CORDURA PLUS CLOTH DRIVER SEAT COVER  
BLACK CORDURA PLUS CLOTH PASSENGER SEAT COVER  
HIGH VISIBILITY ORANGE SEAT BELTS  
FIXED STEERING COLUMN  
4-SPOKE 18 INCH (450MM) STEERING WHEEL  
DRIVER AND PASSENGER INTERIOR SUN VISORS

Description
<b>Instruments &amp; Controls</b>
GRAY DRIVER INSTRUMENT PANEL
GRAY CENTER INSTRUMENT PANEL
ENGINE REMOTE INTERFACE WITH PARK BRAKE AND NEUTRAL INTERLOCKS
BLACK GAUGE BEZELS
LOW AIR PRESSURE INDICATOR LIGHT AND AUDIBLE ALARM
2 INCH PRIMARY AND SECONDARY AIR PRESSURE GAUGES
INTAKE MOUNTED AIR RESTRICTION INDICATOR WITHOUT GRADUATIONS
97 DB BACKUP ALARM
ELECTRONIC CRUISE CONTROL WITH SWITCHES IN LH SWITCH PANEL
KEY OPERATED IGNITION SWITCH AND INTEGRAL START POSITION; 4 POSITION OFF/RUN/START/ACCESSORY
ICU3S, 132X48 DISPLAY WITH DIAGNOSTICS, 28 LED WARNING LAMPS AND DATA LINKED
HEAVY DUTY ONBOARD DIAGNOSTICS INTERFACE CONNECTOR LOCATED BELOW LH DASH
2 INCH ELECTRIC FUEL GAUGE
ENGINE REMOTE INTERFACE WITH PRESET FAST IDLE
ENGINE REMOTE INTERFACE CONNECTOR AT BACK OF CAB
ELECTRICAL ENGINE COOLANT TEMPERATURE GAUGE
2 INCH TRANSMISSION OIL TEMPERATURE GAUGE
ENGINE AND TRIP HOUR METERS INTEGRAL WITHIN DRIVER DISPLAY
(1) DASH MOUNTED PTO SWITCH WITH INDICATOR LAMP - PARK BRAKE AND NEUTRAL INTERLOCK
ELECTRIC ENGINE OIL PRESSURE GAUGE
NO OVERHEAD INSTRUMENT PANEL
AM/FM/WB WORLD TUNER RADIO WITH BLUETOOTH, USB AND AUXILIARY INPUTS, J1939
DASH MOUNTED RADIO
(2) RADIO SPEAKERS IN CAB

Description
AM/FM ANTENNA MOUNTED ON FORWARD LH ROOF
ELECTRONIC MPH SPEEDOMETER WITH SECONDARY KPH SCALE, WITHOUT ODOMETER
STANDARD VEHICLE SPEED SENSOR
ELECTRONIC 3000 RPM TACHOMETER
IDLE LIMITER, ELECTRONIC ENGINE
PRE-TRIP LAMP INSPECTION, ALL OUTPUTS FLASH, WITH SMART SWITCH
DIGITAL VOLTAGE DISPLAY INTEGRAL WITH DRIVER DISPLAY
SINGLE ELECTRIC WINDSHIELD WIPER MOTOR WITH DELAY
MARKER LIGHT SWITCH INTEGRAL WITH HEADLIGHT SWITCH
ONE VALVE PARKING BRAKE SYSTEM WITH WARNING INDICATOR
SELF CANCELING TURN SIGNAL SWITCH WITH DIMMER, WASHER/WIPER AND HAZARD IN HANDLE
INTEGRAL ELECTRONIC TURN SIGNAL FLASHER WITH HAZARD LAMPS OVERRIDING STOP LAMPS
<b>Design</b>
PAINT: ONE SOLID COLOR
<b>Color</b>
CAB COLOR A: L0006EY WHITE ELITE EY
BLACK, HIGH SOLIDS POLYURETHANE CHASSIS PAINT
POWDER WHITE (N0006EA) REAR WHEELS/RIMS (PKWHT21, TKWHT21, W, TW)
SUNVISOR PAINTED SAME AS CAB COLOR A
STANDARD E COAT/UNDERCOATING
<b>Certification / Compliance</b>
U.S. AND CANADA (DUAL CERTIFICATION), EXCEPT SALES CABS AND GLIDER KITS
<b>Secondary Factory Options</b>
CORPORATE PDI CENTER IN-SERVICE ONLY

### Extended Warranty

TOWING: 2 YEARS/UNLIMITED MILES/KM EXTENDED TOWING  
COVERAGE \$1200 CAP FEX APPLIES

(\*\*\*) All cost increases for major components (Engines, Transmissions, Axles, Front and Rear Tires) and government mandated requirements, tariffs, and raw material surcharges will be passed through and added to factory invoices.