

MAKE	MODEL	PLATFORM	CAPACITY	BASE PRICE
MAXON	GPS-55X1	82X96 WEDGE	5500	\$21,335.00
	GPSLR-33	51X86	3300	\$13,730.00
	GPSLR-44	51X86	4400	\$14,770.00
	GPSLR-33	60X86	3300	\$14,523.00
	GPSLR-44	60X86	4400	\$15,550.00
	GPSLR-33	63X86	3300	\$14,263.00
	GPSLR-44	63X86	4400	\$15,290.00
	GPSLR-33	72X86	3300	\$15,199.00
	GPSLR-44	72X86	4400	\$16,239.00
	GPST-44	67X94.5	4400	\$15,797.00
	RA-35	55X48	3500	\$15,173.00
	RA-45	55X48	4500	\$16,564.00
	RA-35	55X60	3500	\$15,615.00
	RA-45	55X60	4500	\$17,045.00
	RA-35	55X82	3500	\$16,668.00
	RA-45	55X82	4500	\$18,228.00
	RA-35	79X48	3500	\$16,915.00
	RA-45	79X48	4500	\$18,306.00
	RA-35	79X60	3500	\$17,383.00
	RA-45	79X60	4500	\$18,800.00
	RA-35	79X82	3500	\$18,410.00
	RA-45	79X82	4500	\$19,970.00

# SLIDELIFT™ SERIES

## The GPS Series

**MAXON®**

**Note:**

The GPS meets both FMVSS and CMVSS underride regulation standards.

The GPS Series liftgate comes in two different versions: “Short Arm” with a bed height range from 34” to 49”; “Long Arm” with a bed height range from 37” to 55”. This liftgate can be installed on trailers with a variety of door configurations.

**NOTE:** Please review appropriate liftgate installation manual for full vehicle and or body requirements to ensure proper fitment.

## GPS SPECIFICATIONS

The GPS delivers high capacity (up to 5,500 lbs) in a lightweight design with smart features to enhance ease of use

- Offers 5,500lbs lifting capacity for heavy loads
- Features a range of large, light-weight, rust resistant aluminum platforms for easy handling and durability
- Utilizes the full inside dimensions of your trailer; non-restrictive side or rear loading and unloading; allows unobstructed dock access
- Allows simple operation and easy loading from the ground, or from the side
- Works off the rear of your trailer. No longer limits you to one door type. Accommodates roll-up, full opening and various other door configurations
- Maintains a level ride, regardless of landscape
- Rust-resistant, powder-coated, metal fabricated parts ensure liftgate reliability and long life
- Low maintenance design with greaseless, weather-tight bushings at all pivot points

MODEL	CAPACITY	TOTAL WEIGHT	PLATFORM SIZE
GPS-55	5500 Lbs.	1780 LBS.	82" X 96"



Maxon Lift Corp. 11921 Slauson Ave., Santa Fe Springs, CA 90670  
800.227.4116 Fax 888.771.7713, [www.maxonlift.com](http://www.maxonlift.com)

# SLIDELIFT™ SERIES

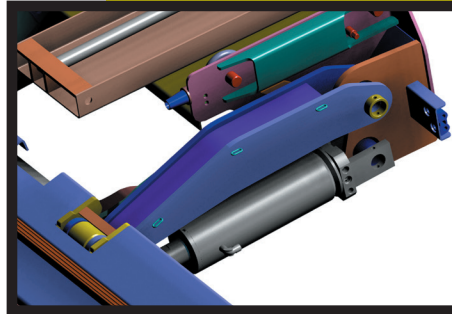
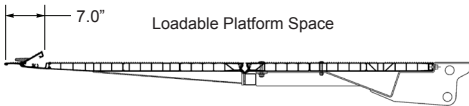
## The GPS Series

**MAXON®**

### Standard Features

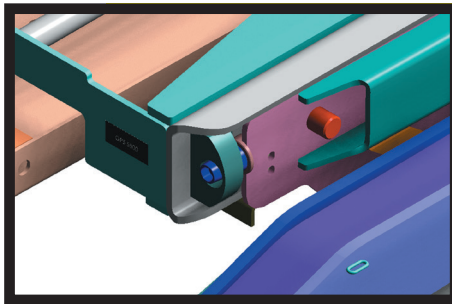
- Potted Switches
- Sealed Wiring Harness
- Platform Safety Lights
- Torsion Spring Assist Flip Over Section
- Auto Leveling
- Foot Controls
- Hand Held Remote Control Switches
- Dual Cart Stops

### Loadable Platform Space with Cart Stops Deployed



### Unique & Simplified Cylinder Design

The GPS X1 technology allows for a simple two-cylinder design. Two cylinders mean less hoses and valves requiring repair. The patented "Soft Landing" system with the exclusive "Two-Speed Cylinder" design Contribute to a safe lifting environment and a smooth precise landing.



### Unique Roller Design

Four 5" sized greaseless bearings provide for a smooth "slide" over the total extension. When fully extended, an automatic "QuickLock" stabilizes the lifting platform and removes the stress from the rolling system.



### Fully Sealed Controls

The Flat Control Panel allows for strategic positioning directly on the vehicle body (or under it) for convenient and ergonomic height access. The solid, weather-resistant, 1/4" flat control panel comes with proven technology that guarantees operation under any circumstance. No more dealings with broken or over-torqued control levers. The flat control panel comes with sturdy push-buttons with pressure points.

Distributed by:

### The Liftgate with X1 Technology

X1 is a new patented design technology that allows a liftgate to raise and lower full lift capacity utilizing only one cylinder for up and down, and one for tilting. This is accomplished by eliminating the mainframe structure and transferring the entire load to the lift frame structure and lift cylinder. This eliminates 20% of the total weight of a four-cylinder gate. Combine this design with the standard aluminum platform, and the result is the strongest, lightest, and least complex available today.

M139-0920



Maxon Lift Corp. 11921 Slauson Ave., Santa Fe Springs, CA 90670  
800.227.4116 Fax 888.771.7713, [www.maxonlift.com](http://www.maxonlift.com)

# SLIDELIFT™ SERIES

## The GPSLR Series

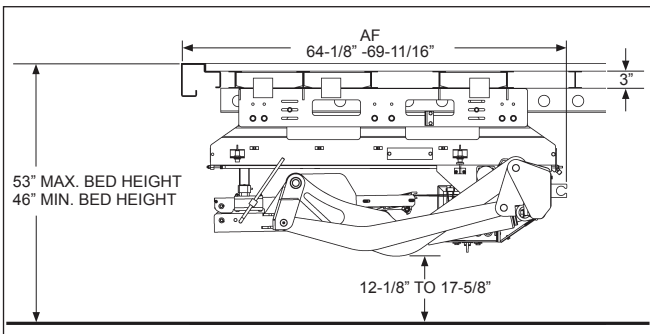
**MAXON®**



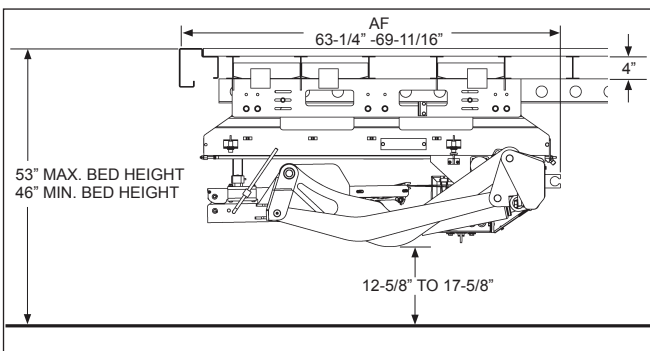
## GPSLR SPECIFICATIONS

**Level ride, ergonomic design, FMVSS & CMVSS underride certification and the industry's toughest finish create the smartest choice in sliders**

- Level ride travel pattern that results in a platform that sits flat on the ground
- Platform features a lightweight aluminum flip over section
- Single and dual aluminum retention ramp options available
- Single and dual cart stops options
- Hydraulic locking system that locks gate securely during transit
- Stress-optimized lift arm design that minimizes arm deflection and optimizes rear trailer seal clearance
- Pump box can be conveniently accessed from rear of trailer
- MAX GRIP® platform anti-slip treatment and Cycle Counter standard



Vehicle With 3" Crossmembers



Vehicle With 4" Crossmembers

NOTE: Please review appropriate liftgate installation manual for full vehicle and or body requirements to ensure proper fitment.

MODEL CAPACITY	PLATFORM SIZE	AF DIMENSION	TOTAL WEIGHT	BED HEIGHT
GPSLR33 (3,300 lbs)	51" x 86" (25" + 26") + 9" Fixed Ramp 60" x 86" (25" + 35") +9" AL Retention Ramp	63-1/4" - 69-11/16"	1,690 Lbs.	46" Min. with Body Laden
GPSLR44 (4,400 lbs)	63" x 86" (37" + 26") +9" AL Fixed Ramp 72" x 86" (37" + 35") +9" AL Retention Ramp		1,715 Lbs.	53" Max. with Body Unladen

\* Actual dimension depends on platform size



Maxon Lift Corp. 11921 Slauson Ave., Santa Fe Springs, CA 90670  
800.227.4116 Fax 888.771.7713, [www.maxonlift.com](http://www.maxonlift.com)



# SLIDELIFT™ SERIES

## The GPSLR Series

**MAXON®**

### Standard Features

- Cycle Counter
- MAX GRIP Platform Treatment
- Level Ride Platform
- Hydraulic Locking System
- AL Platform with a Lightweight Flip Over
- FMVSS & CMVSS Compliant

### Optional Features

- Fixed ramp with single or dual cart stop(s)
- 10" aluminum retention ramp: dual or single
- Battery box / cable kits

### Loadable Platform Space with Cart Stops Deployed



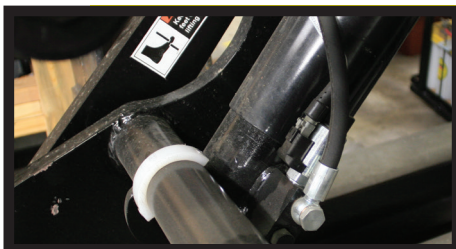
### Level Ride

The GPSLR rides level all the way to the ground, similar to a rail liftgate. The platform design allows for loads to be easily loaded on and off because it sits completely flat on the ground.



### Aluminum Platform - MAX GRIP®

Lightweight aluminum platform design with recessed hinges provides a flat loading surface over entire width of platform. The platform features dual assist torsion springs that minimize the opening and closing force. Platform surface is cross-hatched for improved slip resistance (MAX GRIP®)



### Hydraulic Locking System

The GPSLR features a hydraulic locking system that takes the operator out of the equation. The hydraulic system automatically locks when the gate is in the stow position requiring no additional operator effort.



### Lift Arm Design

The GPSLR features a stress-optimized lift arm design that yields two key benefits: First, the stout and solid design provides ample support even when loaded to its rated capacity! Secondly, the design allows to bridge up to 13" rear seal depth without notching.



### MAXPRO® Paint or GALVANIZED Finish

This patented, Maxon exclusive paint process has a tough polyurea top coat and an AL rich primer that combat corrosion and keep the liftgate looking like new. For even more corrosion protection, the GPSLR is also available in a galvanized finish. (via SOR process)

**Distributed by:**

M-182-0320



Maxon Lift Corp. 11921 Slauson Ave., Santa Fe Springs, CA 90670  
800.227.4116 Fax 888.771.7713, [www.maxonlift.com](http://www.maxonlift.com)

# SLIDELIFT™ SERIES

## The GPST Series

**MAXON®**

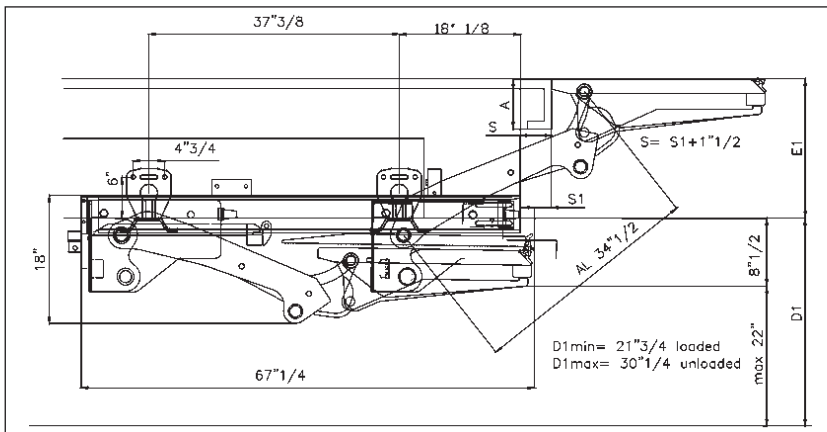


## GPST SPECIFICATIONS

The GPST is MAXON's latest addition to its Slidelift™ product range. This slider is explicitly designed for trucks and excels in performance as well as compact dimensions

- The GPST features the unique X1 technology which utilizes only one lift and one tilt cylinder, resulting in less parts (e.g. less hoses, valves, etc.) and consequently less maintenance costs
- The GPST utilizes two opposing cylinders to slide in and out resulting in a smooth and reliable deployment
- The GPST features a unique Quick Lock mechanism. The Quick Lock carries the load (not the rollers) and avoids platform bouncing when moving load from the truck to the platform

MODEL CAPACITY	OVERALL WEIGHT	PLATFORM SIZE	BED HEIGHT
GPST-44 4,400 Lbs.	1,654 Lbs.	67" X 94.5"	38" Laden 56" Unladen



GPST-44 Lift Dimensions and Mounting Requirements

E1	S 1Min	S 1Max	A Max
15.75"	3.23"	6.75"	6.25"
17.75"	2.13"	5.5"	7"
19.75"	0.79"	2.75"	7.5"
21.75"	0	2.75"	8"
23.5"	0	0.75"	8.75"
26"	0	0	9.75"

NOTE: Please review appropriate liftgate installation manual for full vehicle and or body requirements to ensure proper fitment.



Maxon Lift Corp. 11921 Slauson Ave., Santa Fe Springs, CA 90670  
800.227.4116 Fax 888.771.7713, [www.maxonlift.com](http://www.maxonlift.com)

# SLIDELIFT™ SERIES

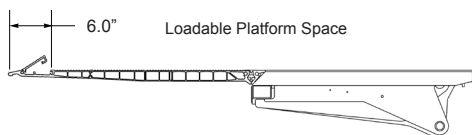
## The GPST Series

**MAXON®**

### Standard Features

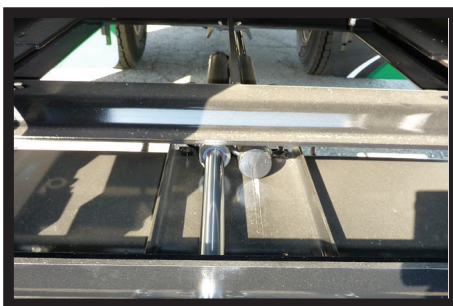
- Torsion spring assisted flip over section
- Powerdown
- Dual cart stops
- Foot controls (can be disabled if not needed)
- Warning lights
- Maintenance-free bushings
- Completely sealed wiring harness
- Hand held control

### Loadable Platform Space with Cart Stops Deployed



### Unique X1 Technology

The unique X1 technology utilizes only one lift and one tilt cylinder. Resulting in less parts (e.g. less hoses, valves, etc.) and consequently less maintenance costs



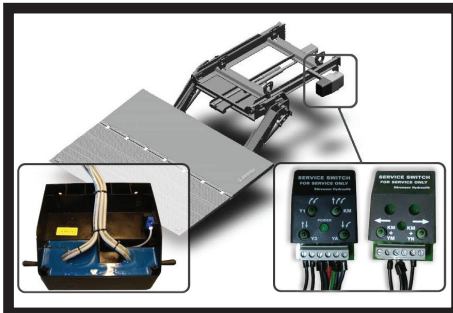
### Double Acting Cylinders

The GPST slides in and out via double acting cylinders that ensure smooth and gentle sliding



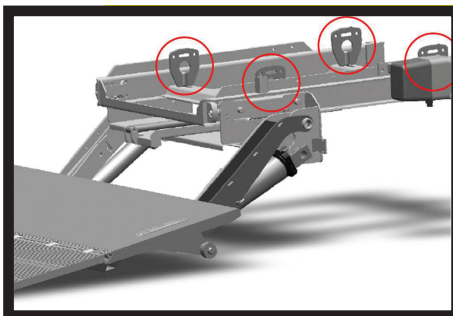
### Unique Locking Mechanism

The GPST's Quick Lock carries the load (not the rollers) and avoids platform bouncing when moving load from the truck to the platform



### Electrical & Trouble Shooting Features

The GPST offers a service switch that allows you to trouble shoot the gate and to operate the gate if the main control fails. The wiring harness is fully sealed



### Installation

The GPST installation is efficient and thus cost effective. Simple and fast installation with 4 adjustable brackets (accommodates frame widths from 28" – 35"). It only requires 67" of rear overhang and accommodates bed heights from 38" – 56".

Distributed by:

M-195-0719



Maxon Lift Corp. 11921 Slauson Ave., Santa Fe Springs, CA 90670  
800.227.4116 Fax 888.771.7713, [www.maxonlift.com](http://www.maxonlift.com)



# TRAILER SIDE DOOR SLIDELIFT™ SERIES

# MAXON®

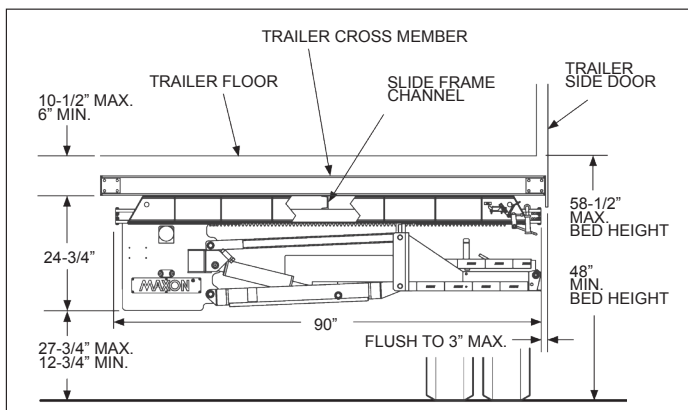
## The RA Series



## RA SPECIFICATIONS

**MAXON's new Trailer Side Door Gate is purpose designed, made to last and supported by the best pre- and after sales service organization in the industry**

- The RA side door series comes in 3,500 lbs and 4,500 lbs capacities
- It features 3 platform widths: 48", 60", and 82" and two depths: 55" and 79"
- Two hydraulic lifting cylinders with bi-directional lock valves
- The RA comes completely assembled and prefilled with hydraulic oil
- Wide arm design for stability and maximum side rail clearance capabilities
- Greaseable pins and bushings on all pivot points
- MAX GRIP® and Cycle Counter standard



Lift Dimensions and Mounting Requirements

NOTE: Please review appropriate liftgate installation manual for full vehicle and or body requirements to ensure proper fitment.

Model Capacity	Overall Weight	Platform Size Depth x Width	Ramp Options	Bed Height
RA-35 (3,500 Lbs.)	1,105 LBS. to 1,315 LBS.	55" X 48" 55 X 60" 55" X 82"	10" Flip Over Ramp	46" Laden 60" Unladen
		79" (55+24) X 48" 79" (55+24) X 60" 79" (55+24) X 82"	Single or Dual Retention Ramp	
		55" X 48" 55 X 60" 55" X 82"	10" Flip Over Ramp	
RA-45 (4,500 Lbs.)		79" (55+24) X 48" 79" (55+24) X 60" 79" (55+24) X 82"	Single or Dual Retention Ramp	



Maxon Lift Corp. 11921 Slauson Ave., Santa Fe Springs, CA 90670  
800.227.4116 Fax 888.771.7713, [www.maxonlift.com](http://www.maxonlift.com)



# TRAILER SIDE DOOR SLIDELIFT™ SERIES

# MAXON®

## The RA Series

### Standard Equipment

- Galvanized finish
- Two hydraulic lifting cylinders with bi-directional lock valves
- Hydraulic gear drive for in and out movement
- Potted toggle switches (Up/Down & In/Out)
- Adjustable stops (in/Out & Up/Down)
- Mechanical transit latch
- Electric transit signal
- Stow Light

### Optional Features

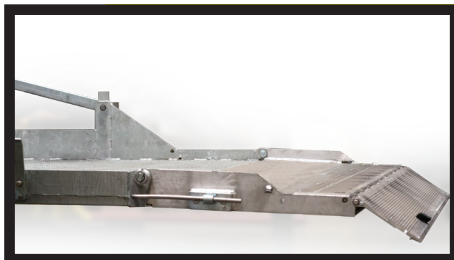
- 3', 10', 20', or 60' Battery Install Kits
- Single or Dual Retention Ramp (79" platforms only)
- Hand held control
- Protective rubber mud guard

### Distributed by:



### Large Platform

RA design utilizes full trailer width resulting in the largest platform sizes possible



### Level Ride Platform

The RA rides level all the way to the ground which allows loads to be easily loaded on and off



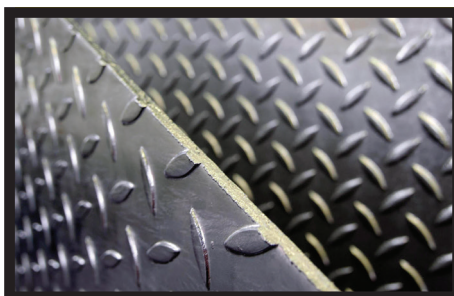
### Hydraulic Locking System

The hydraulic system automatically locks the gate as soon as the operator releases the control switch



### Stow Light

Indicator light that signals if the gate is correctly stowed or in operation



### GALVANIZED Finish

For the utmost in corrosion protection, RA liftgates are shipped with a galvanized finish

M193-0818



Maxon Lift Corp. 11921 Slauson Ave., Santa Fe Springs, CA 90670  
800.227.4116 Fax 888.771.7713, [www.maxonlift.com](http://www.maxonlift.com)