

MAKE	MODEL	VEHICLE	PRICE
DURAMAG	SB-S40F17-ST D-SRW	FORD 17+ SHORT BED	\$13,145.19
DURAMAG	SB-S40F9916- STD-SRW	FORD 99-16 SHORT BED	\$13,145.19
DURAMAG	SB-S31FR19-S TD-SRW	FORD RANGER 19- SUPER CAB	\$13,145.19
DURAMAG	SB-S-42G20-S TD-SRW	GM 20-SHORT BED	\$13,145.19
DURAMAG	SB-S-42G0719 -STD-SRW	GM 07-19 SHORT BED	\$13,145.19
DURAMAG	SB-S-37D09-S TD-SRW	DODGE 09+ SHORT BED	\$13,145.19
DURAMAG	SB-S-56U-STD -SRW	UNIVERSAL LONG BED SRW	\$13,145.19
DURAMAG	SB-S-56U-STD -DRW	UNIVERSAL LONG BED DRW	\$14,552.44
DURAMAG	SB-S-60-STD- SRW	FORD/DODGE/GM 60" CA SRW	\$14,086.44
DURAMAG	SB-S-60-STD- SRW	FORD/DODGE/GM 60" CA DRW	\$14,086.44
DURAMAG	SB-S-84-STD- DRW	FORD/DODGE/GM 84" CA DRW	\$17,223.50

DURAMAG®

ALUMINUM SERVICE BODIES FOR ALL APPLICATIONS. MADE IN THE USA.

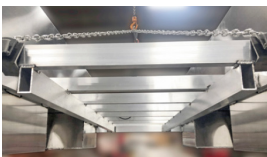


S-SERIES: TRADITIONAL SWING DOORS

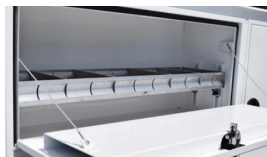
DISTRIBUTED BY:

STANDARD FEATURES

- All Aluminum (6000 Series) Understructure with Extruded Box Tube Construction
- Heavy Slam Latch Tailgate with Stainless Steel Lock Rods
- Swing Doors with Nitrogen Props on Vertical Compartments
- Extreme Duty (6000 Series) .625 Interlocking Extruded Aluminum Floor
- Fully Welded Construction—No Rivets, Screws, or Bolts to Come Loose
- Welded Fender Flares for Superior Strength and Rigidity
- Black Polymer Rivetless Door Handles
- Sandblasted Metal Preparation (not inferior wash/zinc phosphate)
- Powder Coated—Standard: White
Optional colors available:
 - Black
 - Red: GM/Dodge Red & Ford Red
- LED Marker Lights (where required)
- LED Penny Light in Each Compartment
- LED Ultra-thin 6" Round Stop/Turn/Tail/Backup Body Lights
- 3/16" smooth cargo walls & compartment tops
- Continuous Aluminum Piano Door Hinge
- Rear Compartments Reinforced for Liftgate Applications
- Pickup Service Bodies Compatible with Factory Hitches
- Adjustable Shelving in Front, Middle, and Rear Compartments (one shelf with dividers in each compartment)
- Pass through Panel between Front & Center Compartments
- Tread Plate Rock Guards on Front Wall—ALL Models
- Strongest Built Aluminum Service Body in the Industry



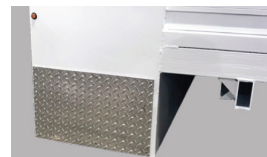
Strongest Understructure in the Industry



Center Compartment with Dropdown Door (showing Double Walled Doors)



Pass Thru Compartment Shown Between Front and Middle Boxes



Tread Plate Rock Guards on Front Walls



LED Ultra-thin 6" Round Stop/Tail/Turn/Backup Body Lights

OPTIONS

Cast Aluminum
Fuel Filler

Magnum Rack

Canopy

Master Lock
System

Flip Top
Compartments

Roll-up
Tonneau Covers

Bumpers—Lighted
and non-lighted

E-Track

7' SERVICE BODIES

Model	DuraMag Aluminum Weight (lbs)	Typical Steel Weight (lbs)	% Lighter Than Steel	Cab to Axle	Compartment Door Openings		
					Front	Middle	Rear
SB-S-36D-STD-SRW	582	874	33%	36"	10-5/16" x 12-5/16"	56-3/16" x 15-5/16"	20-5/16" x 33-3/16"
SB-S-40F-STD-SRW	665	964	31%	40"	10-5/16" x 12-5/16"	56-3/16" x 15-5/16"	20-5/16" x 33-3/16"
SB-S-42G-STD-SRW	670	1,009	34%	42"	10-5/16" x 12-5/16"	56-3/16" x 15-5/16"	20-5/16" x 33-3/16"
SB-S-31FR19-STD-SRW RANGER	582	874	33%	31"	—	44-5/16" X 14-1/4"	19-3/16" X 32-1/4"

8.5' SERVICE BODIES

Model	DuraMag Aluminum Weight (lbs)	Typical Steel Weight (lbs)	% Lighter Than Steel	Cab to Axle	Compartment Door Frame Opening Clearance		
					Front	Middle	Rear
SB-S-56-STD-SRW	811	1,111	37%	56"	22-3/16" x 33-3/16"	42-5/16" x 15-5/16"	20-5/16" x 33-3/16"
SB-S-56-STD-DRW	895	1,288	43%	56"	22-3/16" x 33-3/16"	42-5/16" x 15-5/16"	20-5/16" x 33-3/16"

9' SERVICE BODIES

Model	DuraMag Aluminum Weight (lbs)	Typical Steel Weight (lbs)	% Lighter Than Steel	Cab to Axle	Compartment Door Frame Opening Clearance		
					Front	Middle	Rear
SB-S-60-STD-SRW	820	1,238	51%	60"	26-7/8" x 33-3/16"	42-5/16" x 15-5/16"	24-7/8" x 33-3/16"
SB-S-60-STD-DRW	912	1,399	53%	60"	26-7/8" x 33-3/16"	42-5/16" x 15-5/16"	24-7/8" x 33-3/16"

11' SERVICE BODIES

Model	DuraMag Aluminum Weight (lbs)	Typical Steel Weight (lbs)	% Lighter Than Steel	Cab to Axle	Compartment Door Frame Opening Clearance			
					Front (Cab Side)	Front (Rear Side)	Middle	Rear
SB-S-84-STD-DRW	1,124	1,704	52%	84"	26-7/8" x 33-3/16"	18-5/16" x 33-3/16"	42-5/16" x 15-5/16"	24-7/8" x 33-3/16"