



## **Heil DuraPack Model 4060 Split Body Rear Loader-25 Cubic Yard**

**ALL ITEMS FACTORY INSTALLED UNLESS OTHERWISE INDICATED**

### **Base Body**

Body floor – 7 gauge 80,000 psi; flat floor design with interlaced subframe  
Body sides – 8 gauge, 80,000 psi  
Body roof - 8 gauge, 80,000 psi  
Tailgate sides – 3/16" AR 400, 184,000 psi  
Hopper floor – 1/4" AR 400, 184,000 psi  
Packer blade – 7 gauge, 80,000 psi  
Sweep blade – 3/16" AR 400, 184,000 psi  
Body width -97"  
Body height -97"  
Hopper size – Streetside 1.1 cubic yard; curbside 1.5 cubic yard  
Hopper loading width – Streetside 31"; curbside 43"  
Loading sill height – 5" below chassis frame height  
Cycle time approximately 16-18 seconds  
Compaction ratio 700-800 lbs. per cubic yard  
Sweep cylinders – 4.5"  
Pack Cylinders – 4"  
Hydraulic pump – 50 GPM  
System pressure – 2,500 psi  
Dual 3 micron return line oil filters  
In-cab filter bypass monitor  
One (1) year body warranty  
Factory Mounting  
Front mount tandem Vane pump  
Hopper work lights, 2 lights, 1 per hopper  
Multi-function Smart light system with full body LED lights  
Dual rear buzzers  
Street and curbside body access doors  
Automatic tailgate latches  
Regenerative valve for faster packer & reload times  
1/4 " hopper floor liner  
3/16" hopper sidewall liners  
Dual emergency stop buttons  
Body undercoating  
Rear vision camera System with 7" flat screen color monitor  
Dual factory cart tipper hydraulics  
Incoming freight and service





**WE NEVER STOP WORKING FOR YOU**

# **DuraPack® 4060**

Ultra-Durable Split Body Rear Loader

a **DOVER** company



**Environmental  
Solutions Group®**

a **DOVER** company

**The industry's premium multi-compartment rear load RCV.**

[www.Heil.com](http://www.Heil.com)



# DuraPack® 4060

## Ultra-durable split body rear loader.

Heil® **DuraPack** 4060 Split Body Rear Load Garbage Trucks are a win-win, allowing collection of multiple residential trash streams or recyclables. With the **DuraPack** 4060 split body rear loader, one truck can do the work of two. And the reduced weight body means enhanced fuel economy and larger payloads on the route.

As the industry's premium multi-compartment rear loader garbage truck, the **DuraPack** 4060 split body rear loader is the next generation of split-body rear loaders. By adding the smooth curved sides and the fully welded, interlaced subframe that has become the benchmark of durability for the **DuraPack** line, the DP4060 refuse collection vehicle combines longevity and functionality to deliver maximum performance.

With a 40/60 two-compartment split body, the **DuraPack** 4060 features independent hydraulic systems, enabling the pressure to be adjusted for each compartment, based on the type of waste being collected. For example, a higher compaction rate can be used for the refuse compartment, while a lower compaction rate can be selected for recyclables to minimize breakage. Why have multiple rear loaders on your route when a **Heil** Split Body **DuraPack** 4060 garbage truck can do the same amount of work in less time?

The **DuraPack** 4060 is as functional as it is durable. Operators around the world appreciate the convenient one-handed manual packing controls that enable them to stop, start, or reverse either the upper panel or the sweep panel at any point in the packing cycle. With a simple two-step cycle that reloads in just six to eight seconds, and a complete cycle time of 16 to 18 seconds, it gets them through their routes quickly. (Cycle time varies based on pump application.)

## The Heil® **DuraPack**® 4060

Design, performance and reliability that works for YOU.



### Add 3rd Eye® Digital Packages

Connect for service verification, body/chassis data, fuel tax reporting, and route management. Includes factory installed **3rd Eye** Mobile, with the ability to connect up to eight cameras.



### Add 3rd Eye® Collision Avoidance Radar

**3rd Eye** family of Integrated Collision Avoidance Radar Systems protect both your drivers, your assets, and those in close proximity to your vehicle using existing **3rd Eye** Mobile camera cables.



### Add Roof Or Front Of Body CNG System

This system enables CNG refuse fleets to deliver the same productivity expected from a diesel unit, while saving money with clean, domestic, compressed natural gas as fuel.



### Add Bayne Thinline® Premium Cart Tippers

Outfit your truck with a single or dual Bayne Thinline® premium mobile lifters and reduce the stress and strain on personnel who manually load the vehicle, and increase route efficiency.



# Smarter By Design, With Loyalty Built In

The DuraPack® 4060 was specifically designed to maximize your efficiency on daily collection routes.

## DuraPack® 4060

## Reliable Rear Loader Performance



### + REDUCED BODY WEIGHT

The **DuraPack 4060** is brilliantly designed to have an optimized weight, without sacrificing strength and durability. The result is a perfect combination of dependability and increased payload. Greater route productivity delivers the lowest Total Cost of Collection.

### + HIGH COMPACTION

In addition to having lighter body weight, the ultra-durable **DuraPack 4060** has the compaction power to easily handle multiple waste streams. Increased payload and route productivity mean lower operating costs, and a better bottom line.

### + DUAL-STREAM CAPABLE

The **DuraPack 4060** dual-bin design allows for collection of trash and recyclables, or any two different waste streams, eliminating the need for multiple vehicles/operators on your two-stream routes.

### + INDEPENDENT HYDRAULICS

The **DuraPack 4060** provides two bodies in one durable, reduced weight vehicle. Its independent hydraulics allow for different compaction rates for each compartment. Handle multiple commodities with ease, increase your productivity, and reduce costs!

## Discover What Sets the DuraPack® 4060 Apart



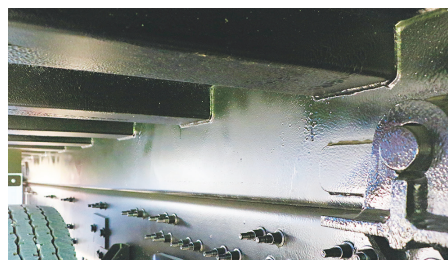
### ELECTRONIC CONTROLS

Push-button controls are easy to operate, with better ergonomics for the operator, providing increased flexibility of operation. System shut-offs are located on each side of the tailgate and each gate's packing mechanisms can be operated from either side, allowing the operator to stay out of the street.



### HYDRAULIC TAILGATE LOCKS

Auto-lock tailgate latches engage when the tailgate closes. This enhanced safety feature reduces the likelihood of injuries, and is quicker and safer than manual tailgate locks.



### DURABILITY AND LONGEVITY

Our exclusive, fully welded, interlaced subframe provides exceptional longevity, while resisting abrasion, corrosion, and salt damage. The body is constructed of 7-8 ga. high tensile strength steel, while the hopper features 1/4" thick AR400 steel on the floor, and 3/16" thick AR400 steel on the sides for superior strength and durability.



### MANUAL CONTROL VALVES

Manual control valves are equipped under both sides of the front head of the body, allowing the operator to raise/lower the tailgate and operate the ejector with the simple pull of a handle. There is also a manually locking lever that prevents the inadvertent actuation of the tailgate and ejector functions.

# Smarter By Design, With Loyalty Built In

The DuraPack® 4060 was specifically designed to maximize your efficiency on daily collection routes.

## DuraPack® 4060 Specifications

Performance Specifications	
Compaction	Up to 1,000 lbs. per yd³
Hopper Sizes	1.1yd³ & 1.5yd³
Packing Cycle Time	16 - 18 seconds
Reload Time	Under 10 seconds

Hydraulic Specifications	
<b>PUMP</b>	
Type	Tandem Vane
Maximum Operating Pressure	2,500 psi @1,300 RPM
GPM	42 GPM
<b>OIL RESERVOIR</b>	
Tank Capacity (net)	50 gallons (190 liters)
Filters	3 micron return filter with in-cab filter monitor; 100 micron suction line
<b>VALVES</b>	
Shutoff	Ball valve
Packing Control	Spool type
Ejector and Tailgate Raise	Spool type

Cylinder Specifications			
Body Cylinders	Type	Bore	
Tailgate Raise and Lock	(4) Double acting	in.	3.0
		mm	76.2
Packer Sweep	(4) Double acting	in.	4.0
		mm	102
Side Panels	(4) Double acting	in.	4.5
		mm	114
Ejection	(2) Double acting 4-stage telescopic	in.	6.5
		mm	1,651

Body Chamber Specifications			25 yd³
Volume	Street side (40%)	yd³	10
		m³	7.6
	Curb Side (60%)	yd³	15
		m³	11.4
Inside Width	Street Side (40%)	in.	35.3
		mm	900
	Curb Side (60%)	in.	48.1
		mm	1,220
Inside Height	Street Side (40%)	in.	78.7
		mm	2,000
	Curb Side (60%)	in.	78.7
		mm	2,000

Typical Chassis Configuration			25 yd³
Minimum GVWR		lbs.	68,000
Minimum GAWR	Front	lbs.	20,000
	Rear	lbs.	48,000
Minimum Cab to Tandem (CT)		in.	163 ± 3
Minimum After Frame (AF)		in.	60
Minimum Platform		in.	216 ± 3
C.O.E Wheelbase		in.	190 ± 3
Conventional Cab Wheelbase		in.	230 ± 3
<b>Additional Notes:</b> <ul style="list-style-type: none"><li>• Must have front crank drive pump provision.</li><li>• Low entry C.O.E. dual-drive recommended</li><li>• Any chassis sent to Heil® with less than these minimum GVWR/GAWR requirements will not be mounted</li></ul>			

Body Specifications		25 yd³
Total Body Capacity	yd³	25
	m³	19.1
Overall Length	in.	285
	mm	7,240
Overall Width	in.	97
	mm	2,460
Overall Height Above Frame	in.	97
	mm	2,464
Overall Height With Tailgate Raised	in.	155
	mm	3,940
Gross Weight (approximate)	lbs.	22,500
	kg.	10,205

Tailgate Specifications			25 yd³
Hopper Capacity	street side (40%)	yd³	1.1
		m³	0.84
	curb side (60%)	yd³	1.5
		m³	1.14
Sill Height Below Chassis Frame		in.	5
		mm	51
Hopper Loading Width	street side	in.	31.5
		mm	800
	curb side	in.	43.3
		mm	1,100
Hopper Opening Height		in.	66.5
		mm	1,690

All designs, specifications, and components are subject to change at the manufacturer's sole discretion at any time without notice. Data published herein is for information purposes only and shall not be construed to warrant suitability of the unit for any particular purpose, as performance may vary with the conditions encountered. The only warranty is our standard written Warranty Statement for this product at the time of shipment.



WE NEVER STOP WORKING FOR YOU

# DuraPack® 4060

Ultra-Durable Split Body Rear Loader



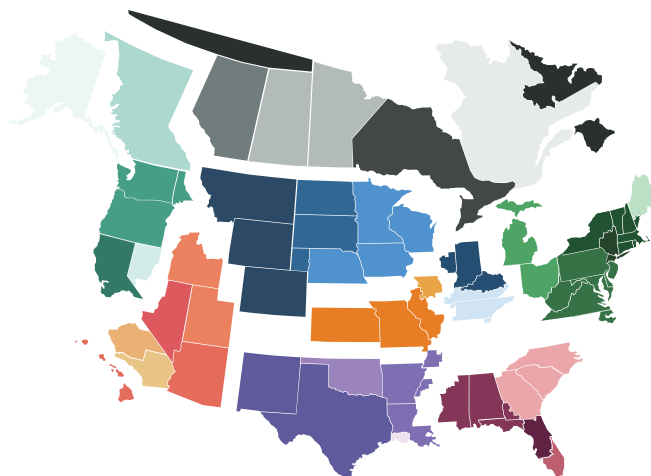
## EXPEDITE THE PURCHASE OF YOUR HEIL® UNIT THROUGH SOURCEWELL

Sourcewell Cooperative Purchasing Program has awarded **Heil** a nationally bid contract for "Solid Waste and Recycling Collection Equipment with Related Equipment, Accessories, and Supplies." Through the **Heil** contract, Sourcewell members can purchase any of the **Heil** line of refuse and recycling equipment, including front-loading, side-loading, and rear-loading refuse collection vehicles, without having to create an RFP and send the project through a time-consuming duplicate bid process. By using the existing nationally bid contract, members can receive the products they need more quickly and cost effectively. Best of all, Sourcewell membership is free! Qualified agencies can join online via the Sourcewell purchasing website at [www.sourcewell-mn.gov](http://www.sourcewell-mn.gov). To find out more about purchasing **Heil** equipment via the Sourcewell contract, please contact your local **Heil** Dealer at [www.heil.com/dealers](http://www.heil.com/dealers).



## TRUST HEIL® CERTIFIED OEM PARTS

**Heil** Certified OEM parts are the most reliable replacement parts for **Heil** refuse collection vehicles. They're made following the exact specifications and production processes on the same assembly lines as the parts originally installed on the bodies. This means that they fit perfectly every time. **Heil** uses only the highest-quality materials for parts that last - minimizing costly downtime. For more information on parts, contact your **Heil** dealer. Visit: [www.heil.com/dealers](http://www.heil.com/dealers) to find the dealer nearest you.



## RELY ON EXPERIENCED LOCAL SUPPORT

When you buy from **Heil**, you gain the aftermarket support of the industry's strongest network of dealers in North America. We stand behind our dealers, so you get the product support you need for the life of your products. Our dealers are also trained to help you find the best product for your particular route needs. To find the **Heil** dealer nearest you, visit: [www.heil.com/dealers](http://www.heil.com/dealers).



All **Heil** products are Connected Collections™ ready. This is part of our vision, focused on helping fleet owners make better decisions, faster. For more information on **ESG's Connected Collections**, contact your local **Heil** dealer or visit us online at [www.heil.com/connected-collections](http://www.heil.com/connected-collections)

[www.heil.com](http://www.heil.com)



## COUNT ON THE LOWEST TCC

Helping you save money is our passion, and we apply tremendous resources to advance our product and service offerings to improve the profitability of your business and provide the lowest Total Cost of Collection and the maximum return on your investment. You can be confident that choosing **Heil** equipment brings a long-term partnership with the industry leader.



## CONFIGURATION ASSISTANCE

Chassis layout drawings are available through your local **Heil** dealer. To find your dealer, visit [www.heil.com/dealers](http://www.heil.com/dealers).



## INDUSTRY-LEADING TRAINING

**Heil** has completely revamped their training programs with the addition of both the **Heil Service Shack**™ and our four-tiered **Nexteligenz**® Connected-Tech Training Program. Now, customers can visit the **Heil Service Shack** on the **Heil** website to learn the latest techniques and view helpful service and training videos any time, as well as sign up for Connected-Tech courses to better train technicians on **Heil** Refuse Products. Ensure your shops are servicing your **Heil** products correctly; check out the **Heil** training offerings at [www.heil.com/nexteligenz](http://www.heil.com/nexteligenz).



a **DOVER** company

**WE NEVER STOP WORKING FOR YOU**

**[www.heil.com](http://www.heil.com)**

**Contact your Heil® authorized dealer:**