

Section: 50-19

April 2023



8" Rotary Wellpoint
Pump Model W8R-P404F.E22T

Holland Pump Company
Corporate Office: 7312 Westport Place
West Palm Beach, FL 33413
USA
1-800-451-0769
www.hollandpump.com

PUMP SPECIFICATIONS

Size: 8" (200mm) Rotary Wellpoint Pump

Pump: LobePro SL266 or Volgelsang equal, Class 30 gray cast iron casing and smooth end cover

Rated Capacities: 1328 GPM (178) CFM @500 RPM

Displacement: 266 US gallons per 100 revolutions

Working Pressure: up to 70 psi (over 25 psi requires larger engine)

Flange Connections: 8" Raised Face ANSI, 150 lbs.

Flange connections included.

Rated Speed: 0 - 500 RPM. Consult factory for recommended operating speeds

Rotors in: Helix four wing rotors, NBR standard, other materials available on request

Solids: Handles up to 2.5" compressible soft solids

Wet-Ends: Gray Cast Iron

Shaft Material: Alloy Steel, AISI 4140

Gear Material: AGMA Class 8, SAE 1045

Gear Chamber: SAE 85W90 gear oil (3.0 quarts)

Quench Chamber: SAE 85W90 gear oil (3.5 quarts)

Mechanical Seals: Duronit vs. Duronit cartridge seal

Vibration: Pumps and motors operate at any point within their operating range without undue noise and vibration

Top and Bottom Housing Segments: Stainless steel 316. Segments adjustable based on wear. **Optional Equipment:** Site or DOT highway trailer, Instrument panel system with low vacuum shutdown system (LOV), automatic remote start/stop, HANS (Holland Automatic Notification System), sound enclosure.

GEAR SPECIFICATIONS

PTO Gear Reduction: 3.75 to 1

Gear oil: SAE85W90 (1.3 Quarts)

ENGINE SPECIFICATIONS

Model: Perkins 400 Series, 404F.E22T, Tier 4 Final

Type: 4 Cylinder, 4 Stroke, Turbo Charged, Liquid Cooled Diesel Engine

Displacement: 2.2L (137 cu.in.)

Governor: Electronic

Lubrications: Forced Circulation

Air Cleaner: Dry Type with Replaceable Element

Lube Oil capacity: 2.8 U.S. Gallons (10.6 L)

Coolant Capacity: 1.1 U.S. Gallons (4.2 L)

Fuel Tank: Integral 68 U.S. Gallon Capacity (#2 Diesel Fuel)

Full Load Operating Time: 68 Hours Minimum

Starter: 12 Volt, 2.0 kW

Standard Features: SAE Flywheel Housing and SAE Flywheel, Standard Instrument Panel: Engine Temperature and Low Oil Pressure with optional Gauge, Key Start, and Hour Meter

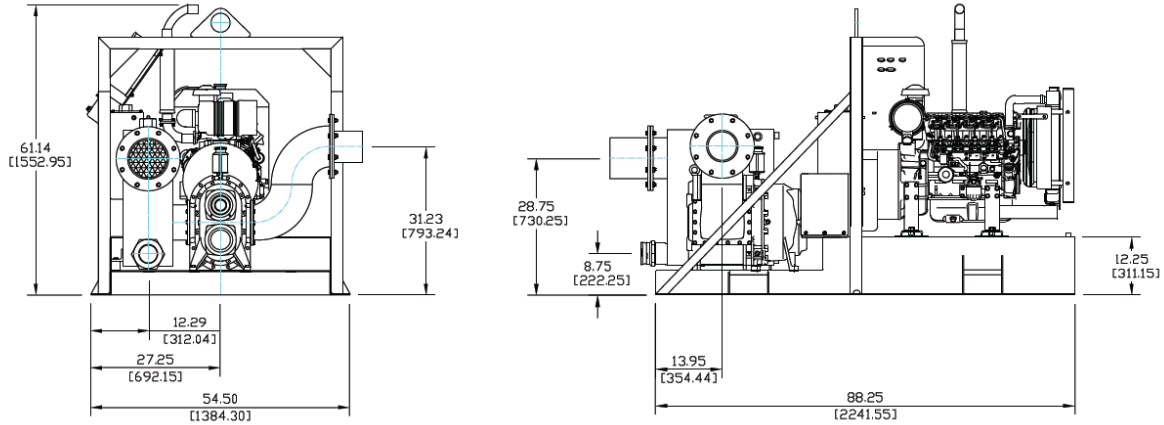
Optional Features: Site or DOT Highway Trailer, Automatic Remote Start/Stop, HANS (Holland Automatic Notification System), NEMA 4 Instrument Package Covering: Air Filter, Fuel Filter, Engine Temperature, Fuel Level, Engine Oil Pressure, Hour Meter, Amp Meter, Low Vacuum Shutdown

Perkins Published Performance: 35.6 HP (26.55kW) Continuous @ 1800 RPM

**8" (200mm) Rotary Wellpoint Pump
 Model W8R-P404F.E22T**

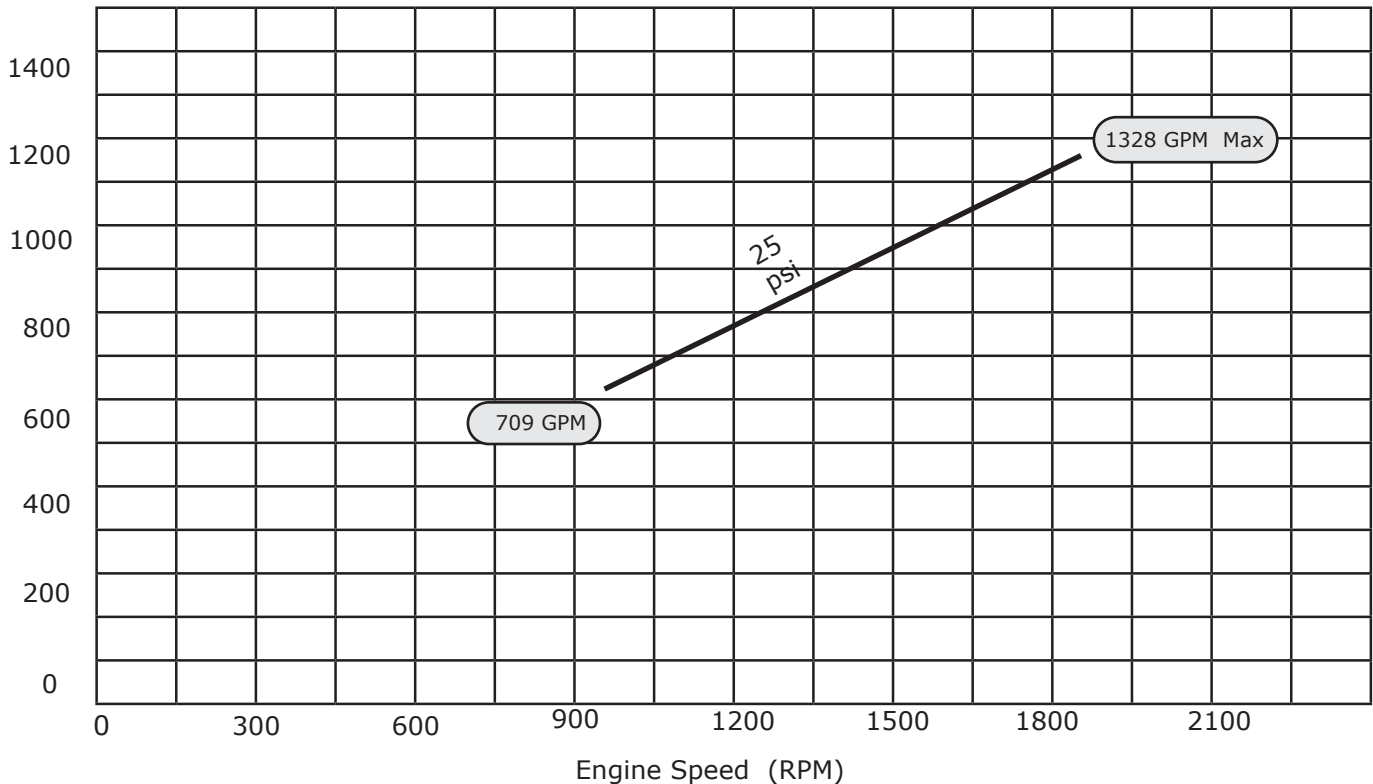
Approximate Dimensions
 Powered by Perkins 404F.E22T, Tier 4 Final

Skid Base
 Net Weight (lbs) 4450
 Shipping Weight (lbs) 4550
 Export Crate Size (cu. ft) 197



U.S. Gallons
 Per Minute (GPM)
 1600

**Performance Curve Model: 8" (200mm)
 Rotary Wellpoint Pump - W8R-P404F.E22T**



The above curve is based on pumping clear water at 62 degrees
 with no lift required and no restrictions in the discharge.

* Measured in open area on concrete surface using Contractor Bureau test method.