

PRIME³ Vacuum Assisted Suction Pump
Model PT14TPB-OP6068HF225
Size 14" (350mm) Medium Head Trash Pump

Holland Pump Company
Corporate Office: 7312 Westport Place
West Palm Beach, FL 33413
USA
1-800-451-0769
www.hollandpump.com

PUMP SPECIFICATION:

Type/Model: Solids Handling/Cornell Redi-Prime

Volute: Cast iron ASTM A 48 class 30"

Flanges: 14" suction, 12" discharge

Impeller: Cast iron ASTM A 48, class 30, enclosed

Solids: Handles 4" (102mm) diameter compressible spherical solids.

PRIME³ Priming System: Automatic dry priming and repriming system that features a 50 cfm water tolerant, diaphragm vacuum pump belt driven by the main drive shaft. The air/water separator is a simple, reliable float. A check valve isolates the pump during priming and protects against back flow.

Wear Rings: Replaceable (Double wear rings available)

Seal: Cornell's patented Cycloseal® design with Run-Dry oil lubrication system. John Crane T-2 single mechanical seal with Viton® elastomers, stainless steel hardware and tungsten- vs. silicon carbide seal faces for abrasion resistance

Discharge Valve: Val-matic or equal

Shaft Sleeve: Heat treated 416 stainless steel

Bearings: Heavy duty, grease lubricated, deep groove ball bearings, with a minimum of 50,000 hours bearing life

PT14TPB-OP6068HF225			Shutoff Head: 160 feet		
Flow (GPM)	Speed (RPM)	TDH (ft)	Pump Efficiency (%)	Power (hp)	Max Suction Head (ft)*
7735	1610	69	76	177	8.3
6446**	1610	93.7	83	183	14.3
5157	1610	114	83	178	17
3868	1610	129	75	167	18.8
2578	1610	138	59	162	19
*Max Suction Head is suction lift plus friction losses without risk of suction cavitation					
**Best Efficiency Point					

ENGINE SPECIFICATIONS

Model: John Deere OP6068HI55 Tier 4 Final Or Approved Alternate

Type: 6 Cylinder, 4 Stroke, Turbocharged, Liquid Cooled Diesel Engine

Displacement: 7 L (428 cu.in.)

Type: Electronic

Air Cleaner: Dry Type with Replaceable Element

Lube Oil Capacity: 3.4 U.S. gal (13L)

Coolant Capacity: 4 U.S. gal (15.2L)

Starter: 12 Volt

Fuel Tank: 295 Gallons

Standard Features: Skid, Murphy Powerview control panel: Oil Pressure, Engine Temp, RPM, Hour Meter, Load, Engine Code Diagnostics

Optional Features: Site or DOT Highway Trailer, Auto-Start/Stop, HANS (Holland Automatic Notification System)

Coupling: Stromag coupling

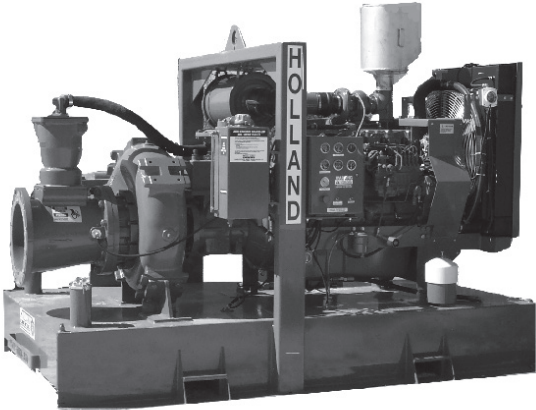
John Deere Published Performance: Maximum Continuous Horsepower: 225 BHP(168kW) @ 2100 RPM

PRIME³ Vacuum Assisted Suction Pump
Model PT14TPB-OP6068HF225
Size 14" (350mm) Medium Head Trash Pump

Holland Pump Company
Corporate Office: 7312 Westport Place
West Palm Beach, FL 33413
USA
1-800-451-0769
www.hollandpump.com

Approximate Dimensions
Powered by John Deere OP6068HI55

Length: 110"
Width: 68.5"
Height: 80"
Net Weight: 8,800 lbs



Performance Curve
Model: T14TPB-OP6068HF225
Size: 14" (350mm) Medium Head Trash Pump

