

**6" Hydraulically Driven Submersible System
Model H6TP-SS D2.9L4 (SS-SUPERSILENT)
Size 6" Trash Pump**

Holland® Pump Company
Corporate Office: 7312 Westport Place
West Palm Beach, FL 33413
USA
1-800-451-0769
www.hollandpump.com

PUMP SPECIFICATIONS

Size: 6" Trash Pump

Volute: Stainless Steel

Impeller: Semi-open, 3 Vane. optional stainless steel or special abrasion resistant steel impellers are available

Solids: Handles 3" diameter compressible spherical solids

Impeller Shaft: High strength steel

Seal: Rotary Mechanical, oil-lubricated, carbon & ceramic (tungsten carbide or silicon carbide seals are available as an option)

Hydraulic System

Hydraulic Reservoir level: 30 gallon capacity with 10 micron spin-on oil filter. Automatic shutdowns for over-temperature or low oil

Hydraulic Oil: Petroleum based AW68 Furnished standard (optional canola bio-degradable oil or mineral based non-toxic inherently bio-degradable oil available)

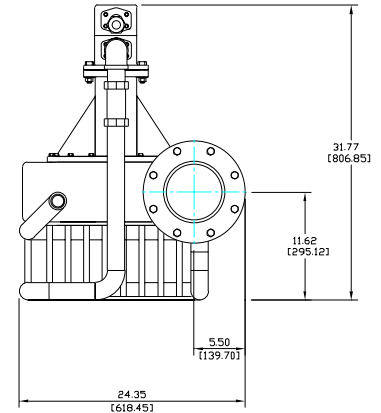
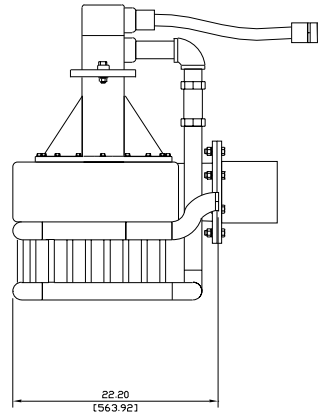
Hydraulic Pump: Denison vane type positive displacement pump with pilot operated Denison relief valve

Hydraulic Motor: Vickers vane type positive displacement motor; option Stainless Steel hat to protect Hydraulic motor

Heat Exchanger: Double row, SCH 40 pipe with integral intake basket (optional engine mounted oil cooler available)

Hydraulic Hose: 50' set of SAE 100R2, two wire braid high-pressure hose

Pump Head Fail Safe Pressure Relief System: Available as an option to protect system against improper connection or interruption of biodegradable oil flow from pump head to power unit



Holland 6" Trash Pump

ENGINE SPECIFICATIONS

Model: Deutz D2.9L4, Tier 4 Final

Type: 4 Cylinder, 4 Stroke, Naturally Aspirated, Liquid Cooled Diesel Engine

Displacement: 2.9L (177cu.in.)

Governor: Electronic

Lubrications: Forced Circulation

Air Cleaner: Dry Type with Replaceable Element

Lube Oil Capacity: 2.4 U.S. Gallons (9L)

Coolant Capacity: 2.1 U.S. Gallons (8L)

Fuel Tank: Integral 68 U.S. Gallon Capacity (#2 Diesel Fuel)

Full Load Operating Time: 60 Hours Minimum @ 2000 PSI

Starter: 12 Volt, 2.0 kW

Standard Features: Skid, SAE Flywheel Housing, SAE Flywheel, SAE B Pump Adaptor, Standard Instrument Panel: Engine Temperature and Low Oil Pressure with optional Gauge, Key Start, and Hour Meter

Optional Features: Site or DOT Highway Trailer, Automatic Remote Start/Stop, HANS (Holland Automatic Notification System), NEMA 4 Instrument Package Covering: Air Filter, Fuel Filter, Engine Temperature, Fuel Level, Engine Oil Pressure, Hour Meter, Amp Meter, Hydraulic Oil Pressure

Deutz Published Performance: Maximum Continuous Power: 50 BHP (37.3 kW) @ 2600 RPM

H6TP @ 2000 PSI	Capacity of Pump in U.S. Gallons per Minute (gpm) (Continuous Performance)
20' / 9.14m	1000/158
10' / 4.57m	1330/182

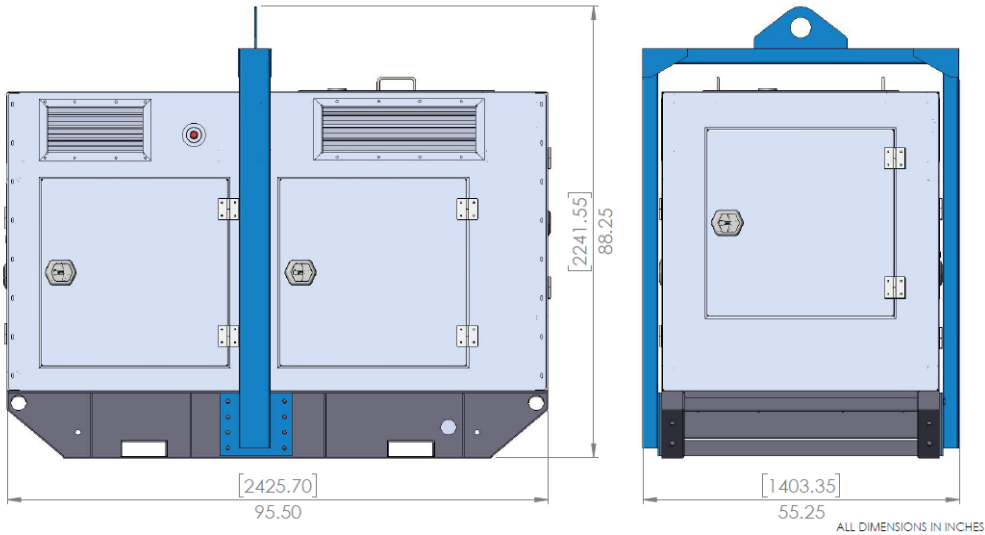


6" Hydraulically Driven Submersible System
Model H6TP-SS-D2.9L4 (SS-SuperSilent)
Size 6" Trash Pump

Holland® Pump Company
Corporate Office: 7312 Westport Place
West Palm Beach, FL 33413
USA
1-800-451-0769
www.hollandpump.com

Approximate Dimensions
Powered by Deutz D2.9L4 Diesel Engine, Optional
Single Axle Trailer Shown

	Skid Base	DOT Trailer	Pump
Net Weight (lbs)	2202	2502	335
Shipping Weight (lbs)	2302	N/A	N/A
Export Crate Size (cu. ft)	107	N/A	10



TOTAL HEAD

Performance Curve Model: H6TP-SS-D2.9L4
Size: 6" (150mm) Trash Pump

