

12" Hydraulically Driven Submersible System
Model H12TP-1204F.E44TA
Size 12" (300mm) Trash Pump

Holland Pump Company
Corporate Office: 7312 Westport Place
West Palm Beach, FL 33413
USA
1-800-451-0769
www.hollandpump.com

PUMP SPECIFICATIONS

Size: 12" Trash Pump

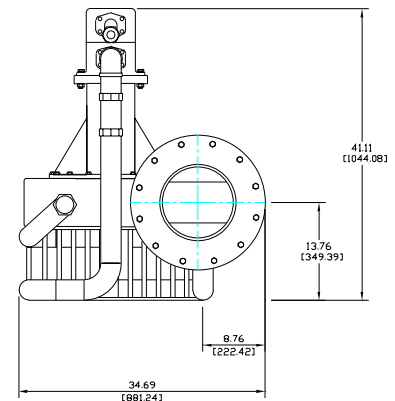
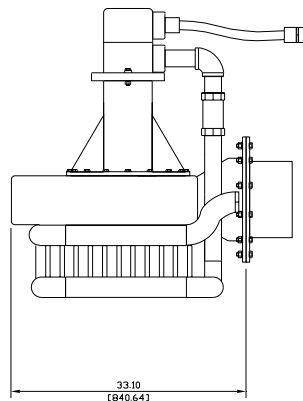
Volute: Fabricated Steel (optional stainless steel and special abrasion resistant steel volutes are available)

Impeller: Semi-open, 3 Vane, Steel Impeller

Solids: Handles 4.5" diameter compressible spherical solids.

Impeller Shaft: High strength steel

Seal: Rotary Mechanical, oil-lubricated, carbon & ceramic (optional tungsten carbide or silicon carbide seals are available option)



Holland 12" Trash Pump

Hydraulic System

Hydraulic Reservoir level: 50 gallon capacity with twin 10 micron spin on oil filter

Hydraulic Oil: Petroleum based AW68 Furnished standard (optional mineral based non-toxic inherently bio-degradable oil available)

Hydraulic Pump: Denison vane type positive displacement pump with pilot operated Denison relief valve

Hydraulic Motor: Vickers vane type positive displacement motor

Heat Exchanger: Double row, SCH 40 pipe with integral intake basket (optional engine mounted oil cooler available)

Hydraulic Hose: 50' set of SAE 100R2, two wire braid high-pressure hose

Pump Head Fail Safe Pressure Relief System: Available as option to protect system against improper connection or interruption of hydraulic oil flow from pump head to power unit

ENGINE SPECIFICATIONS

Model: Perkins 1204F.E44TA, Tier 4 Final Or Approved Alternate

Type: 4 Cylinder, 4 Stroke, Turbocharged, Liquid Cooled Diesel Engine

Displacement: 4.4L (269cu.in.)

Governor: Electronic

Lubrications: Forced Circulation

Air Cleaner: Dry Type with Replaceable Element

Lube Oil Capacity: 3.6 U.S. Gallons (13.5L)

Coolant Capacity: 2.85 U.S. Gallons (10.8L)

Fuel Tank: Integral 240 U.S. Gallon Capacity (#2 Diesel Fuel)

Full Load Operating Time: 60 Hours Minimum

Starter: 12 Volt

Standard Features: Cast Iron Engine Block, Ecoplus Oil and Fuel Filters, Glow Plug, Starting Aid, Integral Inlet and Manifold, Gear Driven Coolant Pump, Cast Iron Exhaust Manifold with Center Side Outlet,

Murphy Powerflow control panel: Oil Pressure, Engine Temp, RPM, Hour Meter, Load, Engine Code Diagnostics
Optional Features: Site or DOT Highway Trailer, Automatic Remote Start and Stop, HANS (Holland Automatic Notification System)

Coupling: SAE Flywheel & Bell housing adaptor, Stromag coupling

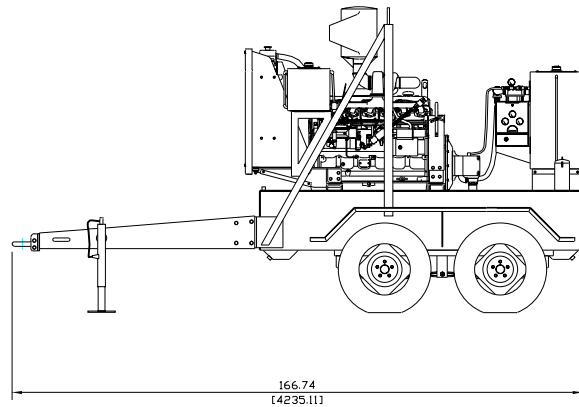
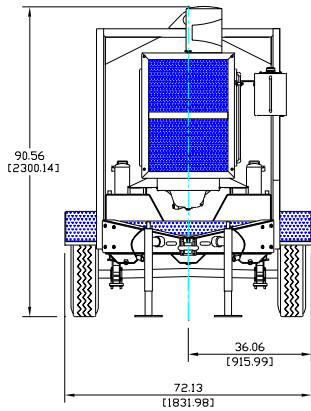
Perkins Published Performance: Maximum Continuous Power: 148 BHP (110kW)@ 2200 RPM

12" Hydraulically Driven Submersible System
Model H12TP-1204F.E44TA
Size 12" (300mm) Trash Pump

Holland Pump Company
Corporate Office: 7312 Westport Place
West Palm Beach, FL 33413
USA
1-800-451-0769
www.hollandpump.com

Approximate Dimensions
Powered by 1204F.E44TA, Tier 4 Final
Optional Tandem Axle Trailer Shown

	Skid Base	DOT Trailer	Pump
Net Weight (lbs)	4060	4660	690
Net Weight (kg)	1841	2114	313
Shipping Weight (lbs)	4160	4760	740
Shipping Weight (kg)	1887	2159	336
Export Crate Size (cu. ft)	350	N/A	28



Performance Curve Model: Model H12TP-1204F.E44TA
Size: 12" (300mm) Trash Pump

TOTAL HEAD
PSI FT

