

550U & 553U Specifications:

General Dimensions:

Available in 11' through 17' inside lengths, in 1' increments with an 84" inside width. 11' and 12' bodies available with 33" sides and 43" ends. 13' through 17' bodies available with 43" sides and 53" ends or 48" sides and 56" ends.

Sides:

10 gauge high tensile steel with material shedding boxed top rails, full depth 15" rear corner post, boxed vertical braces, 10" front and rear board extension pockets and full length tarp rails.

Floor:

3/16" AR 450 steel with 2" floor to side radius.

Front Bulkhead:

10 gauge high tensile steel construction with two bend top flange and two vertical structural angle reinforcements.

Tailgate:

8 gauge high tensile steel / 7 gauge stainless steel, 6 panel design with fully perimeter box bracing, two intermediate vertical braces and one intermediate horizontal brace and full width lower tailgate pin.

Tailgate hardware:

Heavy duty cast "tarp friendly" top hardware and cast overshot lower hardware and manual release handle. All stainless on 553U.

Lights:

Meets all requirements of FMVSS108 with oval stop/tail/turn lights recessed in rear post. All lighting is recessed, shock mounted, complete with factory wiring harness.

Understructure:

Crossmemberless design using 3/16" X 100K formed 11" trapezoidal longbeams. Lubricated front and rear cross shafts and full width rear bolster.

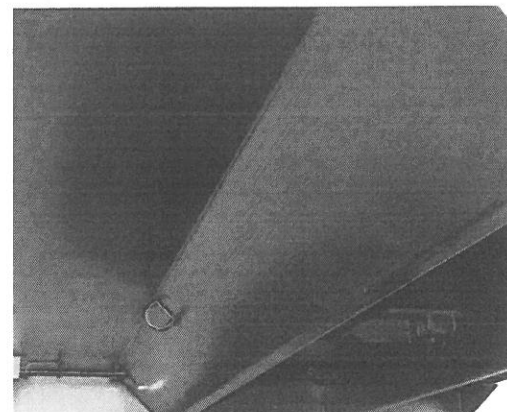
Safety Features:

All Galion 550U & 553U bodies are shipped with a "body up" warning light and OSHA required back up alarm.

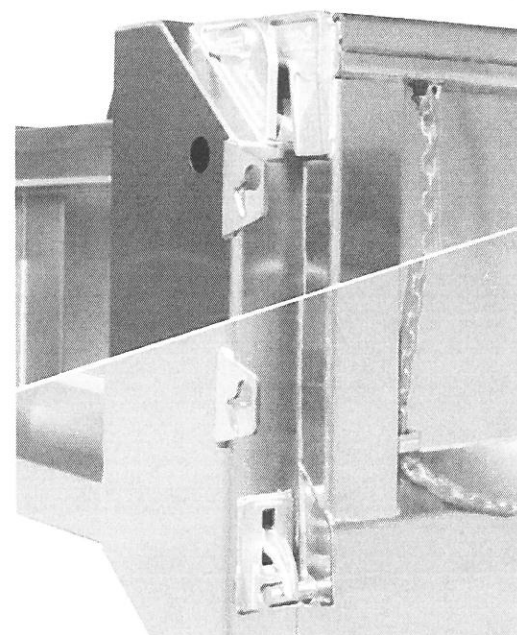
Options:

Nine panel tailgate	304 #4 stainless steel construction
Coal door in gate	304-2B stainless steel construction
Air high lift tailgate	201-LN2B stainless steel construction
Air tailgate	201 #4 stainless steel construction
Asphalt package	Mailhot hoist option
Additional light holes	I-beam longshills
Bolt on spreader apron	
2 way barn door tailgate	(Hardware and hinges not stainless)
Weld on horizontal side braces.	
L.E.D. lighting ILO incandescent	
Various cab protectors (sleek, widths to 90", long version)	

Galion-Godwin is an affiliate of  Dunn, N.C.



The crossmemberless understructure of the 550U and 553U bodies use 3/16" X 100K formed 11" formed trapezoidal longbeams.



Pictured is a close view of the tarp friendly stainless upper hardware and the stainless lower latching hardware standard on the 553U

FULL FACTORY WARRANTY
complete parts and service available
through nationwide authorized distributors

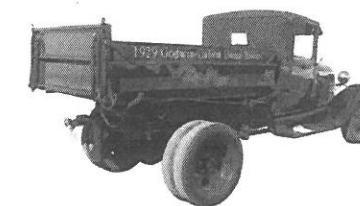
Galion-Godwin Truck Body Co. LLC.
7415 Peabody-Kent Rd. Winesburg OH. 44690 P.O. Box 208
(877) 450-4794 Fax (330) 359-5660

Galion-Godwin reserves the right under its Product Improvement Program to modify construction and/or design and furnish equipment when so altered without reference to illustration and/or specifications shown herein. All specifications subject to change without notice.

7/19/13

550U & 553U Dump Body

*A continued tradition
since the early 1900's*

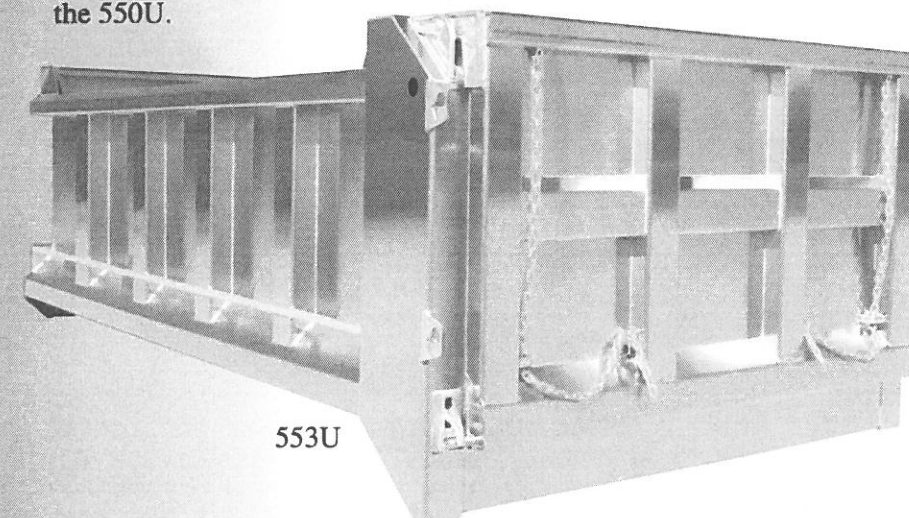


Tough & Versatile

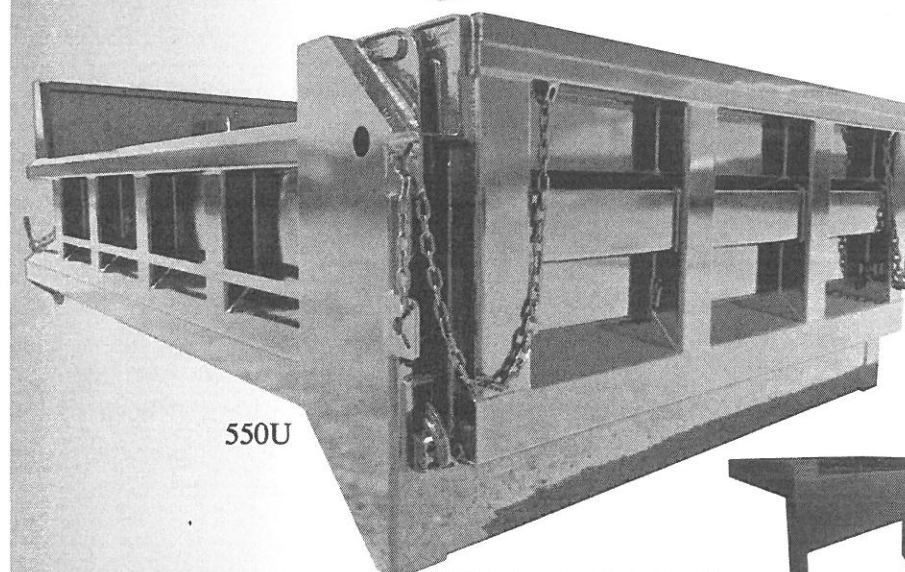
The Galion 550U's lighter crossmemberless construction makes it an excellent choice for over-the highway aggregate hauling. Ideal for construction, batching work, and spreading stone, sand, gravel and other aggregates. Designed for medium to heavy duty work, The 550U series bodies utilize high tensile steel throughout for best resistance to abrasion. The Galion 553U is a stainless copy of the 550U.



- Available in 12' - 17' lengths
- Material-shedding boxed top rails
- Crossmemberless understructure
- 3/16" AR 450 floor
- 6 or 9 panel tailgate
- Tarp-friendly upper gate hardware
- Full-depth rear corner posts



553U



550U

A 23" cab protector is one of many options for the 550U & 553U

Visit Galion and all affiliated companies on the world wide web.
www.galiongodwin.com

