



# SMD601 Plus PROFILING

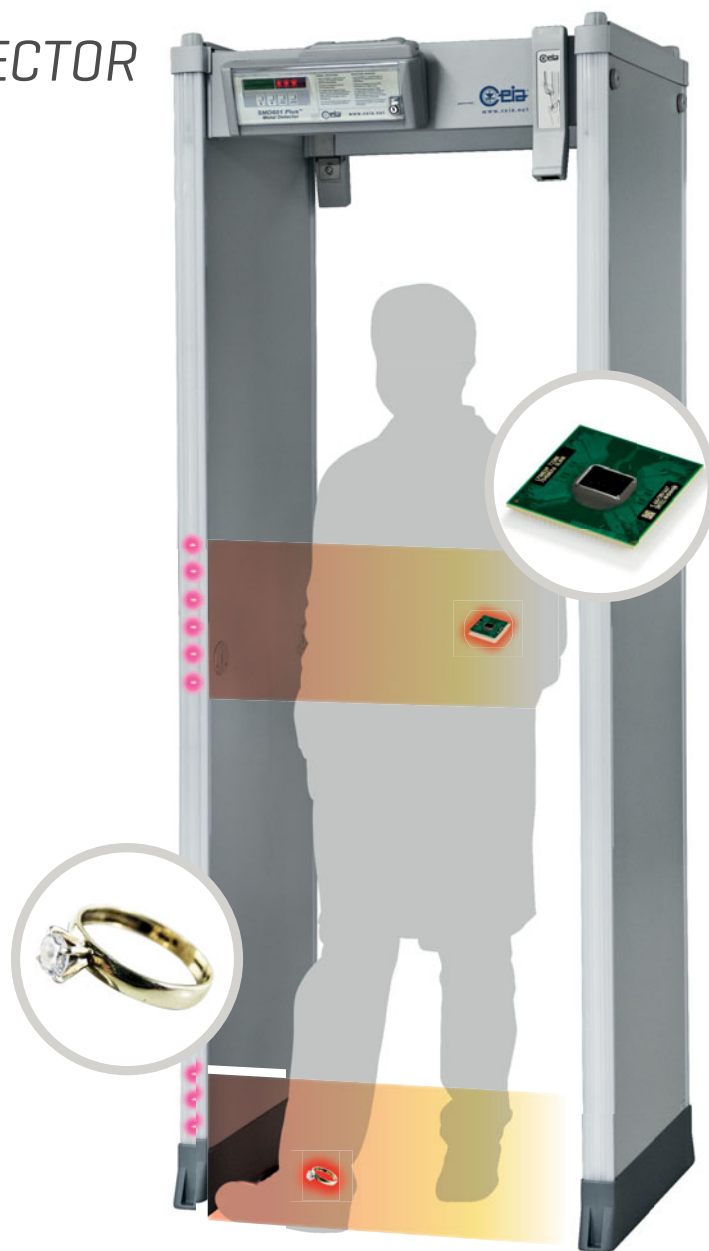
## LOSS PREVENTION METAL DETECTOR

### SYSTEM OVERVIEW

- Provides an inspection of personnel to prevent removal of critical metallic objects from warehouses or production facilities
- Discovers very small metallic items while ignoring non-removable metals
- Detects items carried anywhere on and inside the body

### BENEFITS

- Greatly reduces losses through unprecedented detection levels and deterrence
- Increased throughput by pinpointing of alarm locations
- Extremely low nuisance alarm rate at high sensitivities
- Improves privacy with non-invasive search
- Random selection capability included
- Stand-alone solution [no PC or Server required]
- Simplified networking implementation [for multi-checkpoint requirements]



[www.pointsecurityinc.com](http://www.pointsecurityinc.com)

*Threat Detection through Electromagnetics*

## SMD601 Plus PROFILING: HOW IT WORKS

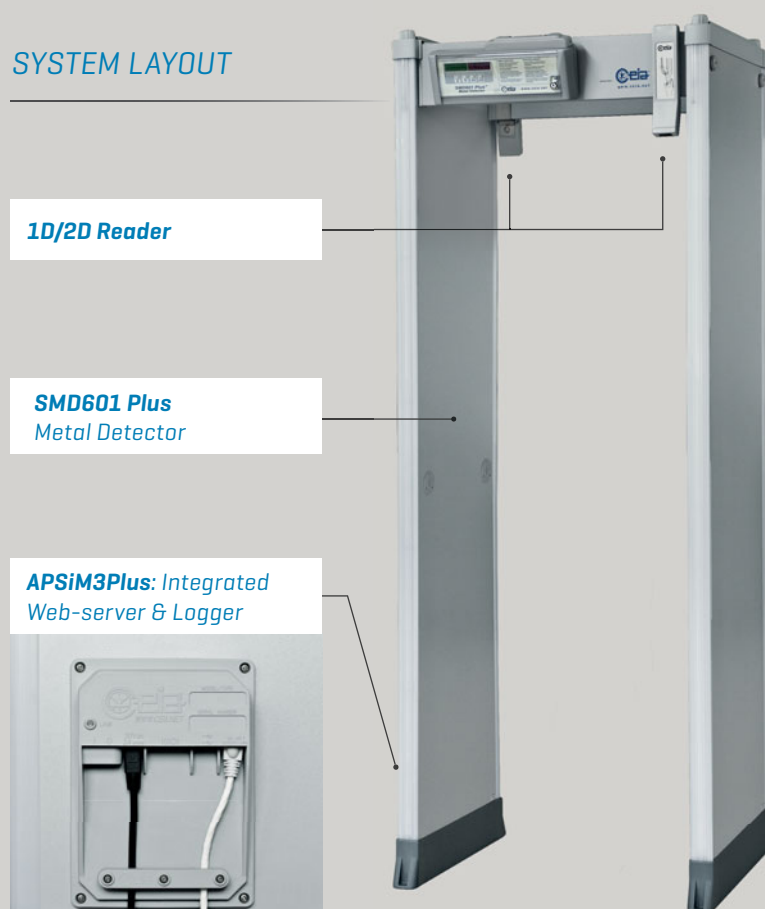
### QUICK, ACCURATE ANALYSIS OF ALL PARTS OF THE BODY OF PEOPLE IN TRANSIT

- The superior uniformity of the electromagnetic field of the **SMD601 Plus** Metal Detector provides very consistent metal detection readings on every transit.
- This ground-breaking capability allows for individual creation of personal metallic signatures or metallic "profiles".

### TRUE METAL CONTENT PROFILE FOR THE PERSON BEING SCREENED

- These profiles can be taken while the individual may be wearing non-removable items, like dental works, medical implants, wedding rings and piercings, and are stored in the **SMD601 Plus** embedded data base.
- These personal profiles are used as a reference for every transit carried out by an individual, allowing detection of small targets while ignoring non-removable personal objects.

### SYSTEM LAYOUT



#### ORDERING INFORMATION

#### Part #

SMD601 Plus Metal Detector SMD601Plus/PZ

1D/2D Barcode Reader 1D/2DReader/P

APSiM3Plus APSiM3Plus/P

#### OPTIONS

#### Part #

User cards



Profiling-card-100

Enrollment cards



Enroll-card-10



EZ-Enroll-card-10

1,000 labels kit  
with 2D barcode



2DLABEL-1000

MDNA - Metal Detector Network  
Appliance

MDNA

Test kit Precious Metal

V/UHS-LPPM-KIT

Test kit Information Technology

V/UHS-LPIT-KIT

## SCREENING SEQUENCE

**HIGH SENSITIVITY SCREENING OF PEOPLE  
WITH OR WITHOUT IMPLANTED METAL OBJECTS**

- 1** A profiled user presents their badge to the barcode reader.
- 2a** **THE USER TRANSITS THROUGH THE METAL DETECTOR**  
The Metal Detector ignores profiled non-removable metal objects and does not alarm.
- 2b** **THE USER TRANSITS THROUGH THE METAL DETECTOR WITH A TARGET OBJECT**  
The target is detected and the Metal Detector shows its position.



**The SMD601 Plus Loss Prevention Metal Detector prevents the theft or accidental removal of metallic objects.**

*As people transit the system, their metal content is compared to a saved personal profile.*

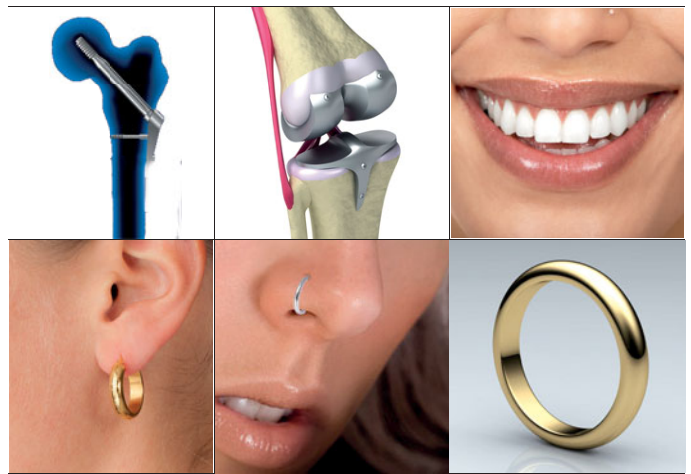
### EXAMPLES OF TARGET ITEMS

- ✓ ELECTRONICS    ✓ PRECISION MECHANICS
- ✓ JEWELRY    ✓ PRECIOUS METALS



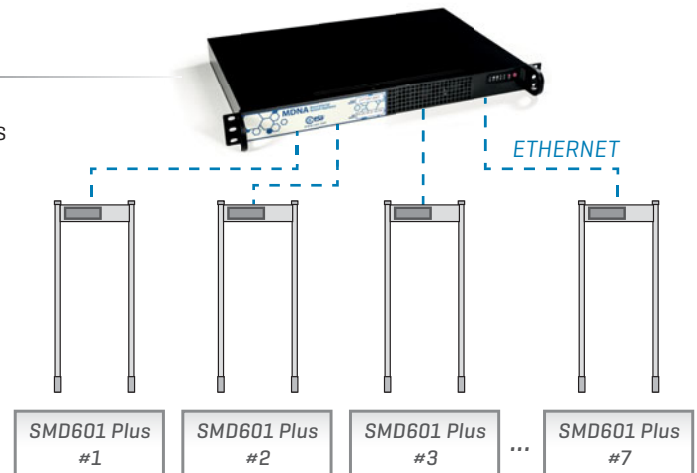
### EXAMPLES OF OBJECTS THAT CAN BE PROFILED

- ✓ MEDICAL IMPLANTS    ✓ DENTAL WORKS
- ✓ WEDDING RINGS    ✓ EAR RINGS    ✓ PIERCING



### MDNA - METAL DETECTOR NETWORK APPLIANCE

- Share User Profiles between up to 50 networked Metal Detectors
- Allows Users to transit through any SMD601 Plus performing a single global enrollment
- Keeps a redundant copy of the User Electromagnetic Profiles
- 7 Ethernet ports to directly connect up to 7 metal detectors without additional Ethernet switches
- Full web-based User interface
- Automatically joins directly attached SMD601 Plus



Point Security, Inc. - 5815 NC Hwy 8 South, Lexington NC - 27292

Phone: 336-357-3417 • Fax: 336-357-3642 • E-mail: [info@pointsecurityinc.com](mailto:info@pointsecurityinc.com) • Call [800] 476-1607

[www.pointsecurityinc.com](http://www.pointsecurityinc.com)