



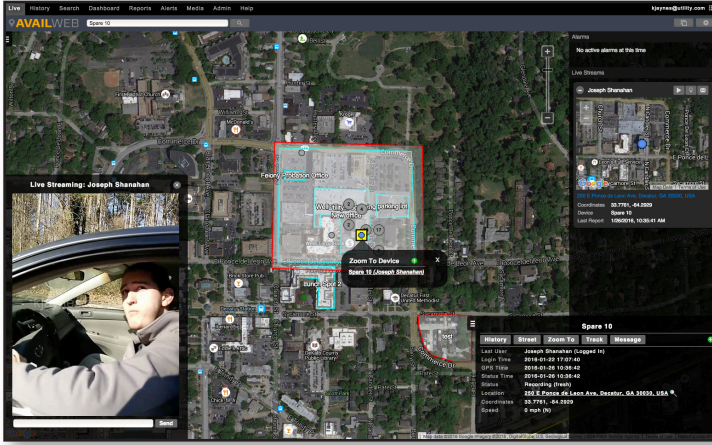
KNOW WHERE YOUR PEOPLE ARE, **INSTANTLY.**

A bad situation is no match for good technology. AVaiL Web™ is a secure command and control web service that provides an automatic real-time, map-based view of location and status of all mobile operations, including vehicles, personnel, and assets. AVaiL Web provides Geofence alerts, live tracking, traffic and weather overlays, asset overlays and Street Views. It's new media interface allows multiple related video and audio feeds to be played simultaneously. AVaiL Web also has live video streaming allowing dispatchers and supervisors to have complete situational awareness. It's smart. And when you use it, you'll be smart, too.

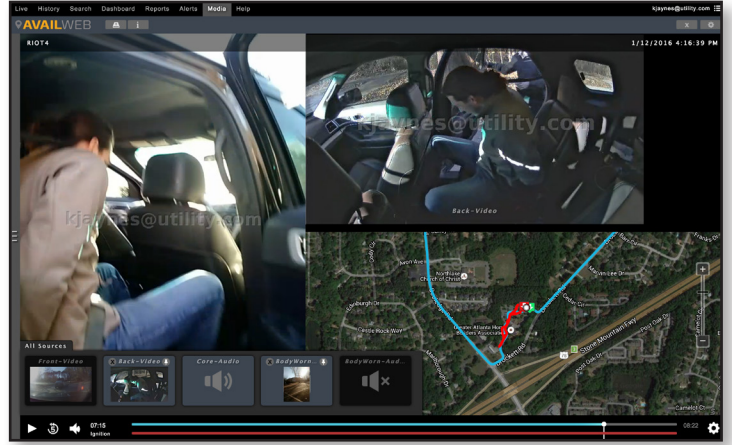
- Ⓞ **Scalable to thousands of vehicles**
- Ⓞ **GPS reporting and vehicle history**
- Ⓞ **GIS/ESRI data overlays**
- Ⓞ **Traffic and weather overlays**
- Ⓞ **Personal and system geofences**
- Ⓞ **Nested geofence polygons**
- Ⓞ **Geofence alerts and reports**
- Ⓞ **Custom device reports**
- Ⓞ **Satellite and street views**
- Ⓞ **Live tracking**
- Ⓞ **Video tracking and playback**
- Ⓞ **Live video streaming**



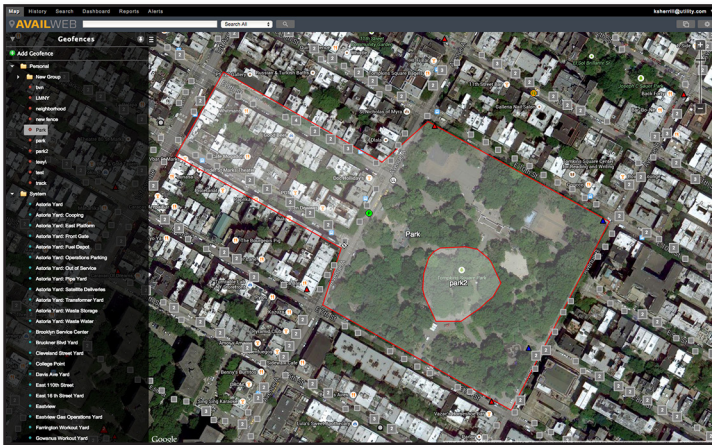
LIVE VIDEO STREAMING



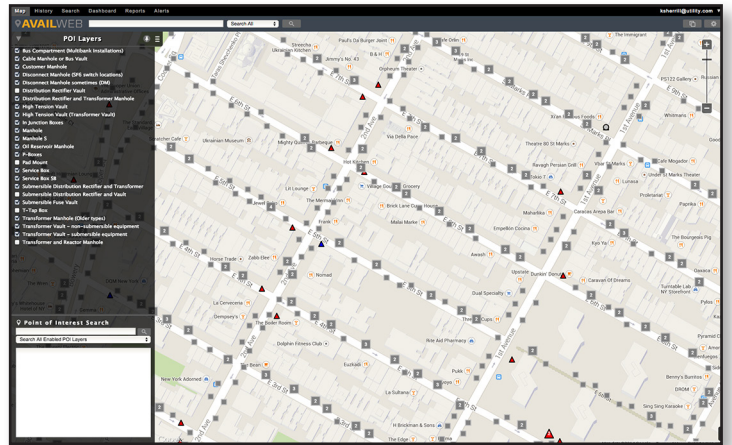
VIDEO TRACKING AND PLAYBACK



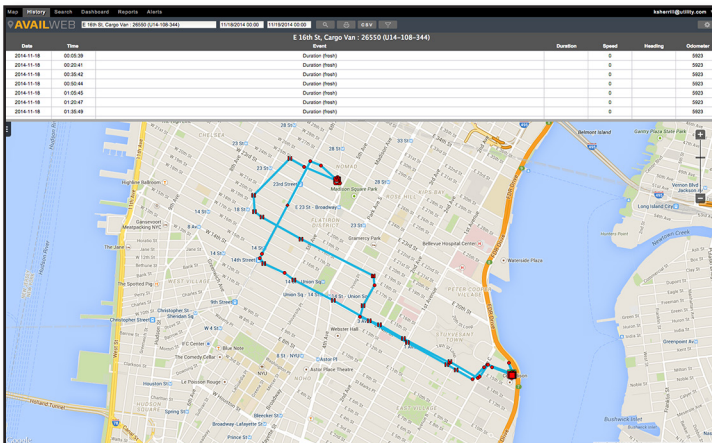
CUSTOM GEOFENCES



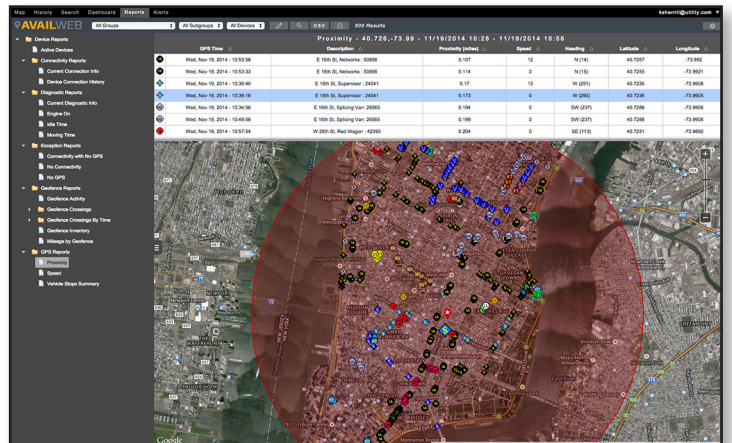
GIS/ESRI DATA OVERLAYS



HISTORICAL GPS TRACKING



CUSTOM DEVICE REPORTS



CONTACT A SALES REPRESENTATIVE TODAY FOR MORE INFO.

404-816-0300 | info@utility.com | www.utility.com

PATENTS: 7,768,548 B2; 6,831,556 B1; 8,781,475
PENDING PATENTS: 13 594047; 13 832517; 61 728598; 61 890570



© Copyright 2014 Utility, Inc. All Rights Reserved.