



# AWARE

## REAL-TIME SITUATIONAL INTELLIGENCE





# REAL-TIME SITUATIONAL INTELLIGENCE

Make better decisions, respond with appropriate force, streamline operations, and protect officers with real-time situational intelligence operations.

As an incident unfolds on the ground, the pace rapidly accelerates as data comes into the command center from CAD incidents, responder alerts, vehicle locations, nearby fixed video, in-car video, and license plate detections.

CommandCentral Aware brings that data into focus, applies rules and analytics, and transforms data into the intelligence you need to see a complete operating picture on the ground - in real time.



## EXPERIENCE THE COMPLETE 360° INCIDENT

**CommandCentral Aware** is part of an integrated public safety software suite designed to **connect all data**, **heighten collaboration** and deliver the most **complete view** of an incident, from call to case closure.



## INTELLIGENCE ANALYST

# HAVE EYES ON THE SCENE IN SECONDS

### KNOW WHAT IS HAPPENING, WHEN AND WHERE IT HAPPENS

Remotely consolidate voice, responder locations, alerts, incident detail, and video into one view.

#### MONITOR ACTIVITY FROM ANYWHERE

View all of your location-based data (radios, vehicles, incidents, cameras, alerts, alarms, plate detections) together, in real-time on a single map display. This common operating picture can be accessed from anywhere, from any internet connected device.

#### ACT WITH THE NECESSARY CONTEXT

Communicate a more informed response to a critical incident and enhance responder safety in the field by accessing a consolidated view through CommandCentral Aware, directly from your agency's map.

#### COLLABORATE WITHOUT DISTRACTION

Control specific viewing permissions based on groups of users to ensure a focused response from every team member during a critical event. Filter your view to only the datasets you need in the moment.



**CommandCentral Aware provides a complete operating picture combining location and mapping, plus real-time video in a single pane of glass.**



"The use of CommandCentral Aware has allowed us to make smarter, faster decisions in incident response. We can now equip our first responders with real-time information to help them prepare for whatever situation they face."

#### **Bill Schwarz**

Crime Analysis Director  
Springfield Real Time Analysis Center

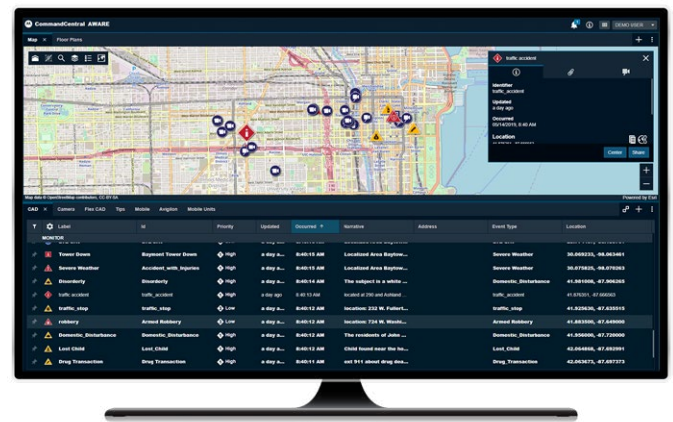




# RESPOND WITH PRECISION

## MAP-BASED INTELLIGENCE

Bring data from the field into the CommandCentral Aware map and filter that data over customizable GIS layers that make it easy to see how and where the incident is unfolding in real time. Know what is happening on the ground to stage resources effectively and respond with appropriate force. With real-time mapping, quickly be alerted to incident escalation to provide situational awareness on the ground and send additional resources.



### ESRI MAPPING

With a common Esri base map, geographically locate real-time events such as CAD incidents, device and unit location, tactical decision data, and camera locations. Incorporate other Esri based map layers for enriched spatial orientation such as property boundaries, landmarks, buildings, floorplans, and asset locations.

### WEATHER AND TRAFFIC

Stream stationary weather and traffic layers and add alerting for weather events. Emergency operations center (EOC) operators can monitor major weather events layered on top of the CommandCentral Aware incident mapping for greater clarity in response. Analysts in the command center use the traffic and weather detail for more informed response routing and staging.

### DEVICE GROUP MANAGEMENT

Organize your devices through group management to further refine ownership to adhere to logical inter agency and intra agency configurations. Manage the content seen by these agencies via groups of users provisioned and authorized to see specific mapping layers.

# KEEP OFFICERS AND CITIZENS SAFE

## RESPOND QUICKLY AND SAFELY TO INCIDENTS

CommandCentral Aware automatically informs the command center that a situation has escalated without further action by the officer. Alerts are plotted on the CommandCentral Aware map in real-time with the coordinates of the emergency, as well as the type of incident, helping dispatchers provide immediate support and improving officer and citizen safety.

### **WEAPON FIRED ALERT (Handguns Only)**

This sensor can be retrofitted to certain handguns and send an alert that the weapon has been discharged. The sensor is located in the grip of the handgun.

### **VEHICLE IMPACT ALERT**

When a responder vehicle, equipped with APX radios, experiences significant impact, an emergency alert will notify the command center of the situation and location.

### **MAN DOWN ALERT**

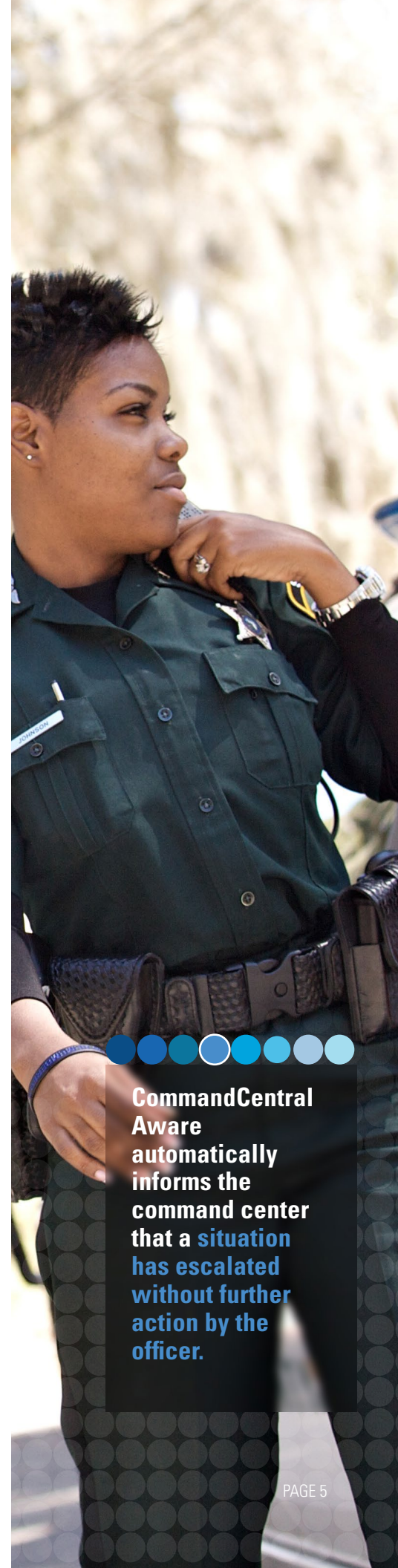
A man down emergency alert generated by all enabled APX portable radios appears as a notification when the radio is at an angle and there is no movement based on user parameters.

### **VEST PIERCE**

When a piercing event is detected, such as a shot or stab, an emergency alert is transmitted to notify command staff that a responder may be incapacitated and needs help. Insert sensors into existing body armor.

### **EMERGENCY BUTTON PRESS**

When an emergency button is pressed on an APX radio, an alert will appear on the consolidated map that an emergency needs to be addressed.



**CommandCentral Aware automatically informs the command center that a situation has escalated without further action by the officer.**



# MAXIMIZE THE POWER OF VIDEO

## LIVE STREAMING FROM ANY VIDEO MANAGEMENT SYSTEM

Realize unprecedented visibility of a scene with real-time video access and notifications allowing agencies of all sizes to access nearby video feeds from within the consolidated map for greater visibility into any situation. CommandCentral Aware brings users' attention to key video content, enhancing officer safety and boosting productivity.



### MULTIPLE VMS INTEGRATION

Bring in real-time video streams from any video management system including Avigilon, Indigo Vision, Pelco, and many more.



### CAMERA MAPPING

Map camera locations and access feeds from the map. Group cameras per site and add geofences around camera groups.



### CAMERA MANAGEMENT

Easily identify camera issues, apply rules to trigger feeds, and remotely pan, tilt and zoom. Remotely troubleshoot issues.



### VIDEO EVIDENCE

Sync and rewind cameras around an incident or response. Tag and bookmark for investigations and export video for review and evidence.



### PERMISSIONS CONTROLS

Control user permissions by cameras or camera groups and create rules to automate and assign camera alert actions.



### AUTOMATED WORKFLOWS

Set rules to automate actions and activate cameras upon pre-defined incident types and use video analytics to be alerted to unusual activity or activity types in video footage.





# SITUATIONAL AWARENESS FOR ALL

Add situational awareness to real-time crime centers (RTCC), public safety answering point (PSAP) command centers, agencies of any size, emergency operation centers (EOC), and major event management with a unified map that helps to coordinate multi-agency responses for a more efficient, streamlined, confident response.

## **REAL-TIME CRIME CENTERS (RTCC)**

As an incident unfolds on the ground, monitor the situation on the CommandCentral Aware map and view real-time feeds of nearby video cameras. From this complete operating picture in the RTCC, provide context and details to protect responders in the field. Post incident, recreate the response with historical mapping and tag video evidence for transparency, analysis and investigation.

## **AGENCIES OF ALL SIZES**

CommandCentral Aware acts as a force multiplier for agencies of all sizes. Integrate existing video assets to virtually patrol your community and quickly get eyes on the scene of an event by viewing cameras simultaneously from fixed or mobile video feeds via any video management system. Easily reference the video source, data, time and location. Customize camera groups for quicker access to particular locations.

## **PUBLIC SAFETY ANSWERING POINTS (PSAP)**

Bring map-based intelligence into the PSAP for an intelligent command center that helps 9-1-1 call takers more quickly locate callers and provides more context to dispatch to keep responders safe on ground. Have one unified map to accelerate workflows, augment decision making, and unify operational view points.

## **EMERGENCY OPERATIONS CENTER (EOC)**

Whether you are coordinating with a multi-agency response to a natural disaster or planning large scale public events, CommandCentral Aware supports a more efficient, streamlined, and confident response. Synthesize all data points coming into the EOC for a complete operating picture integrating real-time intelligence remotely.

## **LARGE EVENTS**

Large scale multi-jurisdictional events like parades, festivals, or sporting events can be a challenge to manage. When planning these types of high visibility events, improve decision making through a single information source to coordinate multiple public safety resources, coordinate staging, and have eyes on the scene.

# COMMAND CENTRAL

CONNECTED. COLLABORATIVE. COMPLETE.



## INCIDENT AWARENESS

## INCIDENT MANAGEMENT

## POST-INCIDENT RESOLUTION



## THE INDUSTRY'S MOST COMPLETE SOFTWARE SUITE

You depend on solutions that help deliver on the promise of a safer world. CommandCentral Aware and other applications in our CommandCentral software suite are designed to bring clarity to decisions and simplify collaborative workflows. From call to case closure, CommandCentral connects all data to create actionable intelligence, eliminates barriers to heighten collaboration and delivers the complete, 360° Incident

Our CommandCentral software suite is unified with voice, video and analytics, creating an integrated ecosystem for public safety. Individually, every Motorola Solutions product and service makes the world safer. United, they are exponentially more powerful. Let's build the future of safety together.

For more information about CommandCentral Aware, please visit:  
[www.motorolasolutions.com/aware](http://www.motorolasolutions.com/aware)



Motorola Solutions, Inc. 500 West Monroe Street, Chicago, IL 60661 U.S.A. 800-367-2346 [motorolasolutions.com](http://motorolasolutions.com)

MOTOROLA, MOTO, MOTOROLA SOLUTIONS and the Stylized M Logo are trademarks or registered trademarks of Motorola Trademark Holdings, LLC and are used under license. All other trademarks are the property of their respective owners. © 2021 Motorola Solutions, Inc. All rights reserved. 06-2021