

# ADANI

## X-RAY FULL BODY SECURITY SCREENING SYSTEM

NARCOTICS  
IN BODY CAVITIES



WEAPONS



ELECTRONICS AND  
MICRO CELL PHONES



CERAMIC  
AND PLASTIC BLADES



EXPLOSIVES  
AND LIQUIDS



PRECIOUS STONES  
AND RARE METALS



# COMPASS DV

## TRUE DUAL VIEW FULL BODY SCANNER



USPAT# 9,576,219 B2  
USPAT# 9,392,983 B2  
USPAT# 7,397,892 B2

ADANI SYSTEMS, Inc.  
[www.adanisystems.us](http://www.adanisystems.us)  
[info@adanisystems.com](mailto:info@adanisystems.com)



See more  
**You Tube**  
Scan QR code

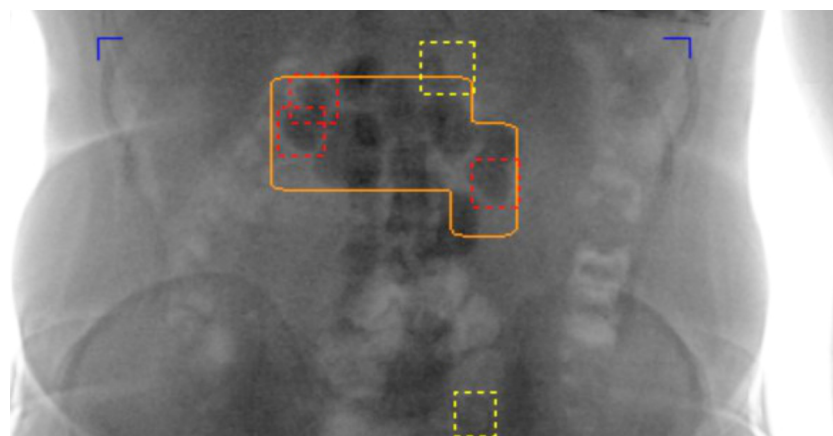
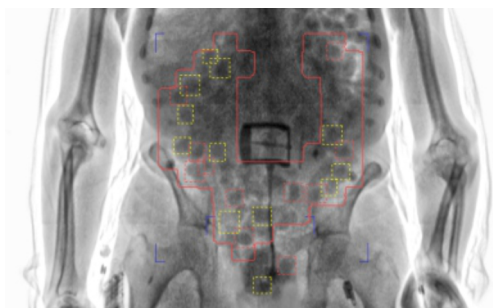
**CIO** TOP 10  
APPLICATIONS MACHINE VISION &  
IMAGING TECHNOLOGY  
Solution Providers-2018

ETL CLASSIFIED  
  
Intertek

### DRUGUARD™

Patented Automated Narcotics  
Detection Assistance Software

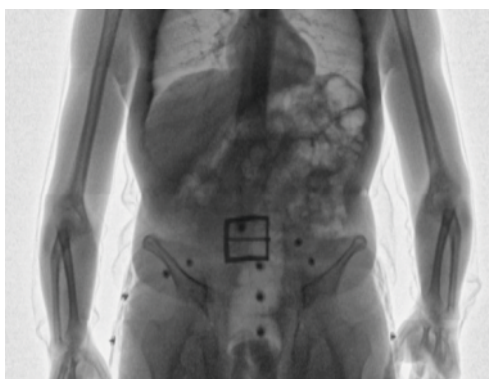
USPAT# 9,576,219 B2



### DRUGUARD™ HIGHEST DETECTION RATE

### HD images

Superior high quality images  
for Full Body & Torso view



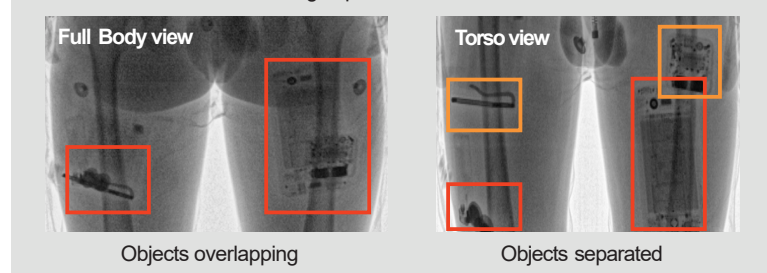
### TRUE Dual View

COMPASSDV is the only available patented TRUE DUAL VIEW X-ray Screening System configured with two independent X-ray generators/detectors arrays.

TRUE DUAL VIEW Patented Technology (USPAT # 9,392,983 B2)

- Stereotactic views
- Independent beam angles
- Individual dose settings

Both images produced from one scan



### COMPASS XSC

The X-ray Shielding Cabin allows minimization of the safety zone around the scanner especially when used in confined spaces or crowded places. The X-ray protective glass and video surveillance system ensures the transparency of the scanner and scanning process.



COMPASSDV conforms to requirements of FDA radiation standards under FFDCA and RCHSA, ANSI 43.17.2009 | ETL 5003466

### Technical data

• Scanning speed	Fully adjustable from 5 seconds
• X-ray dose per inspection	Dosimeter controlled 0.25 $\mu$ Sv (typical)
• Preset scanning modes	9 configurable modes (Full Body & Torso view)
• Footprint	43.7 sq.ft

### Options

- Data management system
- Fingerprint scanner, CCTV
- Barcode reader
- Passport reader
- Face camera
- Intercom system
- Touch screen

