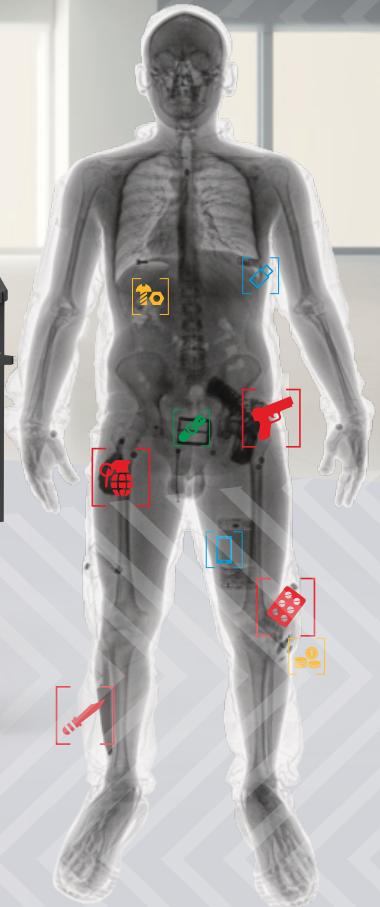
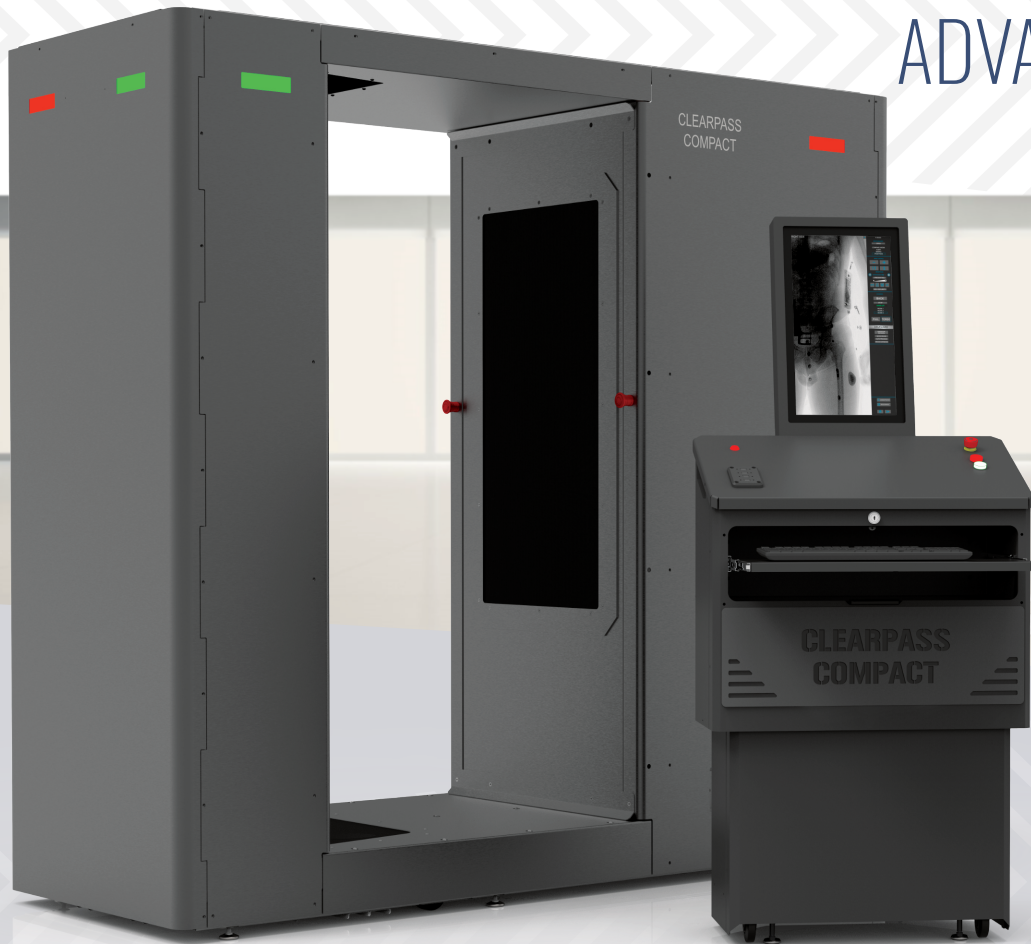


X-RAY SECURITY SYSTEM FOR ADVANCED THREAT DETECTION



CLEARPASS COMPACT

INNOVATIVE NEW PLATFORM FOR PEOPLE SCREENING

KEY FEATURES

- 3-second scan time
- Superior Imaging
- Stationary scanning
- Intuitive Operator Interface
- Standalone or Integrated Operator's Workstation
- Compact footprint and low height

AUTOMATED THREAT AND CONTRABAND IDENTIFICATION.

SAFE | FAST | SMALL | CONVENIENT | UPGRADABLE

CLEARPASS COMPACT Full Body X-ray Scanner answers the calls and demands of Corrections, Transportation and Customs and Border Protection professionals for a compact scanning technology with advanced, high-resolution imaging performance and advanced detection capabilities.

This revolutionary new scanner is rugged, fast, and non-contact.





PROTECT DIGITAL EVIDENCE.

ADANI Systems full-body scanners are the 1st in the USA market to offers CJIS ACE COMPLIANCE in accordance with the FBI CJIS SECURITY POLICY.

APPLICATIONS

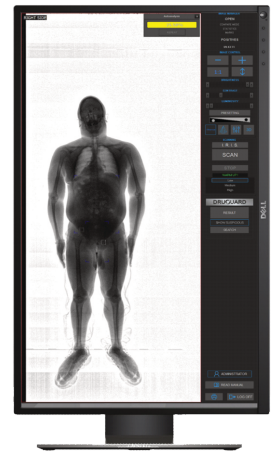
- SECURITY CHECKPOINTS
- MILITARY FACILITIES
- CRITICAL INFRASTRUCTURE
- VIP RESIDENCES
- GOVERNMENT BUILDINGS
- HOTEL COMPLEXES
- TRAFFIC CONTROL
- LAW ENFORCEMENT
- EMBASSIES AND CONSULATES
- CRUISE SHIPS
- PUBLIC EVENTS VENUES

ADANI Systems, Inc. All rights reserved. The information in this document is proprietary to ADANI Systems, Inc. It may not be used, reproduced, disclosed, or exported without the written approval of ADANI Systems, Inc.

With continual development of our products ADANI Systems, Inc. reserves the right to make changes to the design and specifications at any moment and without notice.

SPECIFICATIONS

Dimensions:	87" L x 34" W x 86" H
Scanning area	72" x 22"
Workstation:	22" W x 27" D
Monitor:	24" HD
Power Requirements:	120VAC/20A
Selectable Scan Settings:	0.25 - 4.0 µSv
Generator type:	Monoblock
Generator voltage:	160kV
Detector configuration:	C-Shaped
Wire detectability:	40 AWG
Resolution:	up to 5K



EFFECTIVE DETECTION



SOFTWARE FEATURES

- X-ray image is automatically transferred in a protected format to the images database for storage and future retrieval.
- Searchable images.
- Image optimization filter
- Displays two images simultaneously for visual comparison.
- Store the X-ray images in a format (DICOM, BMP, TIFF, and JPG) viewable on any PC.
- Radiation dose tracking.
- Reporting

CLEARPASS COMPACT FULL-BODY SCANNER



ADANI SYSTEMS

Innovate the Future

13631 Poplar Circle,
Conroe, TX 77304, USA
info@adanisystems.com

Tech Support 844.989.6789
Service@adanisystems.com

Sales Inquiries 936.588.2064
Sales@adanisystems.com

www.adanisystems.us



0503-SA06022020