

CLEARPASS

TRANSMISSION X-RAY FULL-BODY
SECURITY SCREENING SYSTEM



ANSI
American National Standards Institute
ANSI Compliant
ANSI/HPS N47-17-2009



CLEARPASS

Allows the operator to obtain a head-to-toe full body x-ray image for the inspection and identification of foreign objects on or in the body.

ADANI Systems patented technology based is specially designed for use in correctional facilities including city and county jails, prisons, and detention centers.



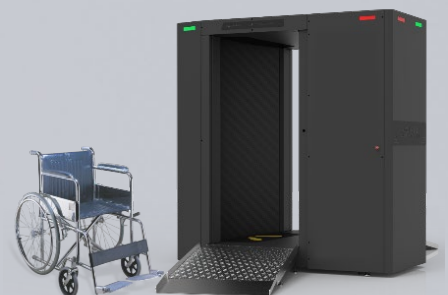
ADANI SYSTEMS

Innovate the Future

13631 Poplar Circle,
Conroe, TX 77304, USA
info@adanisystems.com

Tech Support 844.989.6789
Service@adanisystems.com

Sales Inquiries 936.588.2064
Sales@adanisystems.com



CLEARPASS ADVANTAGES

- ❑ An innovative X-ray inspection method which puts the burden of movement on the system and not the person. The person remains stationary during the scanning process.
- ❑ High medical quality full body images created using optimal beam geometry allowing for accurate image representation with low dose radiation.
- ❑ Detection of prohibited objects under the clothes or inside the body of the person being inspected in 2-3 seconds.
- ❑ Multiple scanning modes and optimization for low X-ray exposure ratio and scalable to high resolution/maximum security screening when needed.
- ❑ Significantly increased screening efficiency as compared to other technologies.
- ❑ Small footprint and relocatable design.
- ❑ ADA compliance allow operator to inspect persons requiring the use of a wheelchair, walker, or cane.



ADANI systems full-body scanners are the 1st in the market to offer CJIS ACE COMPLIANCE in accordance with the FBI CJIS SECURITY POLICY.

STANDARDS FOR DATA SECURITY AND ENCRYPTION. PROTECT DIGITAL EVIDENCE.



*Powered height adjustable ergonomic workstation with touchscreen

CLEARPASS EFFECTIVELY DETECTS THE FOLLOWING ITEMS

Swallowed capsules, pills, containers with narcotics	Small metallic objects (razors) in body cavities	Precious stones and metals	Firearms, knives, weapons	Unconventional weapons (Plastic, wood, ceramic)
Explosives, detonators, wires etc.	Narcotics	Containers with biological or chemical materials	Electronic devices	Food



SELF-SANITIZING TECHNOLOGY

- Extreme Microbial
- UV

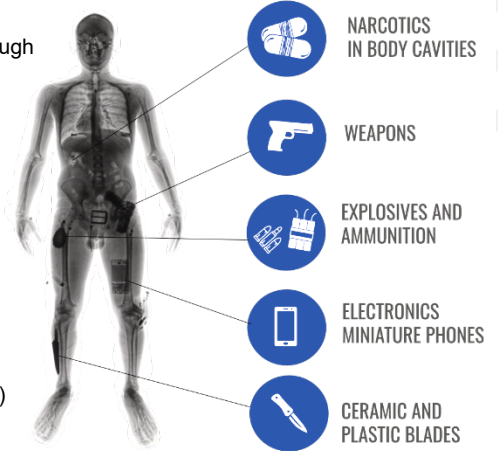




CLEARPASS FEATURES

Inspection method	Transmission X-ray
Inspection object	Full-body inspection
Detection objects	Prohibited objects of any material, hidden inside any part of the human body
Human body inspection method	The person under inspection remains stationary
Inspection chamber	Open portal / Walkthrough design
Scanning technique	The X-ray beam is being moved through the scanned person
Min time of movement of the X-ray beam	2.5 seconds
Movement direction of the X-ray beam	Horizontal
Operating mode	100% duty cycle 24/7/365
Throughout capacity	Up to 600 people per hour
Calibration	Auto
Imaging	Real-time
Operation temperatures	From 0 to +45°C
Humidity	not more than 90% (non-condensing)
General dimensions	89" x 60" x 94.5"
Weight	2,094 lbs.

EFFECTIVE DETECTION



RADIATION SAFETY

ANSI Compliant	Certificate ANSI/HPS N47.17-2009
----------------	----------------------------------

DOSE FOR THE SCANNED INDIVIDUAL/OBJECTS/APPLICABILITY:

Min dose (2500 scans per year)	0.1 μ Sv / high dense objects / no limits for quantity of scans per year
Low dose (1000 scans per year)	0.25 μ Sv / small high dense objects / big low dense objects / weapons, explosives etc.
Standard quality (250 scans per year)	1.0 μ Sv / small dense objects / small low-density objects
High quality (125 scans per year)	2.0 μ Sv /small dense objects and small low-density objects in obstruction environment
Max dose (62 scans per year)	4.0 μ Sv /extra small (0.15 mm) dense objects and small low-density objects in obstructive environment
Delivered dose control	Dose calculating software

POWER FEATURES

Consumption	Max 1 kVA
Voltage	120V \pm 10%, single phase
Protection	1kVA isolation transformer with surge protection

DETECTABILITY

Scanning field	79" x 31.5" (2006 mm x 800 mm)
Min seen wire	42 AWG
Penetration	Min 34-38 (depending on scanning mode) mm steel

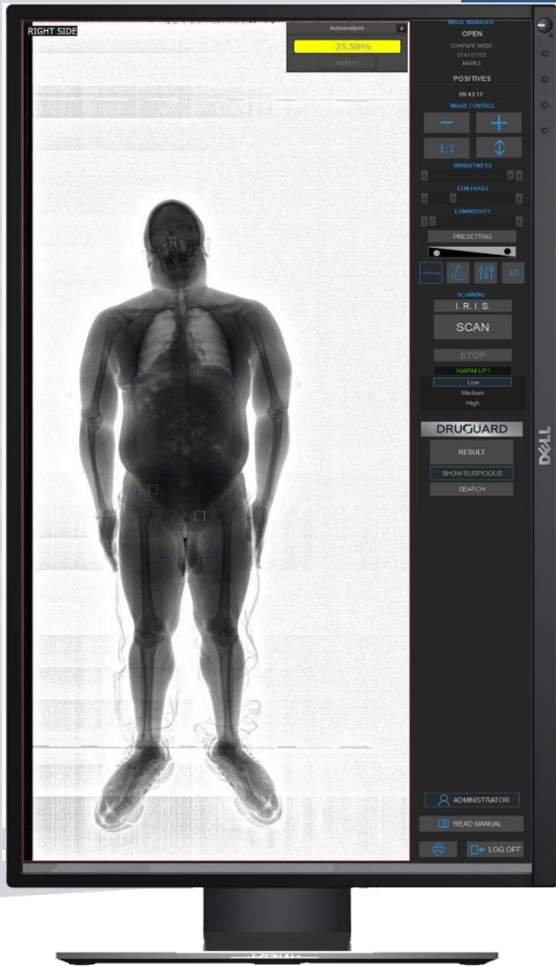
X-RAY DETECTOR FEATURES

Detector type	C-shape array, 1664 pixels
Bit count	16 bit

X-RAY TUBE MODULE FEATURES

Generator's type	Monoblock
Generator's parameters:	
Anode voltage	160 kV
Anode current	2 mA

CLEARPASS X-RAY IMAGES



ACCESSORIES

SOFTWARE UPGRADE



SELF-SANITATION



ADA COMPLIANT RAMP



FINGERPRINT SCANNER



BARCODE READER



PASSPORT READER



FACIAL RECOGNITION CAMERA



INTERCOM SYSTEM



TOUCHSCREEN PANELS



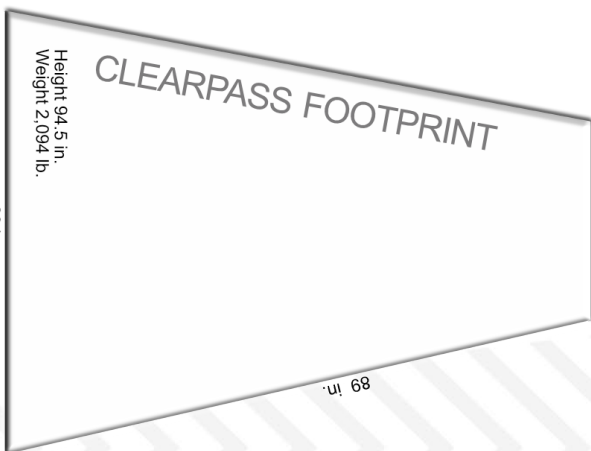
LASER PRINTER



MULTI-OPERATOR FUNCTION



NETWORK INTEGRATION



ADANI SYSTEMS

Innovate the Future

13631 Poplar Circle,
Conroe, TX 77304, USA
info@adanisystems.com

Tech Support 844.989.6789
Service@adanisystems.com

Sales Inquiries 936.588.2064

Reference images | Installed products may vary according to availability