



NCSA Technology Procurement Bid 23-03-2022

Note: Pricing below 12% discount off MSRP for the NCSA Contract; MSRP shown for reference.

GENESIS PART #	GENESIS PART NUMBER DESCRIPTION	GENESIS NCSA Discount Price
GEN-PMIE	<b>Genesis PMI Enhancement:</b> makes it possible for simple remote provisioning on the Motorola Provisioning Manager Interface and synchronization with third party asset management and accounting software (with the addition of GENIIB). *Notes: Provisioning Manager (PM) on the UCS must be licensed for "Provisioning Manager Interface". The PM and CEN network must be configured to allow connection from GenWatch3. Any Motorola fees that may be necessary to enable the UCS provisioning feature are not included. *	\$38,720.00 (MSRP \$44,000.00)
GEN-IIB	<b>GenIIB:</b> a programming API that can be used by third party external devices or software programs to pull live or stored information from the Genesis Databases and push customer driven information or instructions back to those systems and back into the database as well.	\$29,040.00 (MSRP \$33,000.00)
GEN-REMINST	Genesis remote installation professional services: Includes one (1) Genesis representative, remotely, for up to four (4) hours. Remote access to Genesis components required.	\$809.60 (MSRP \$920.00)

# GENESIS PROVISIONING MANAGER ENHANCEMENT SIMPLE REMOTE PROVISIONING THROUGH THE MOTOROLA PROVISIONING MANAGER

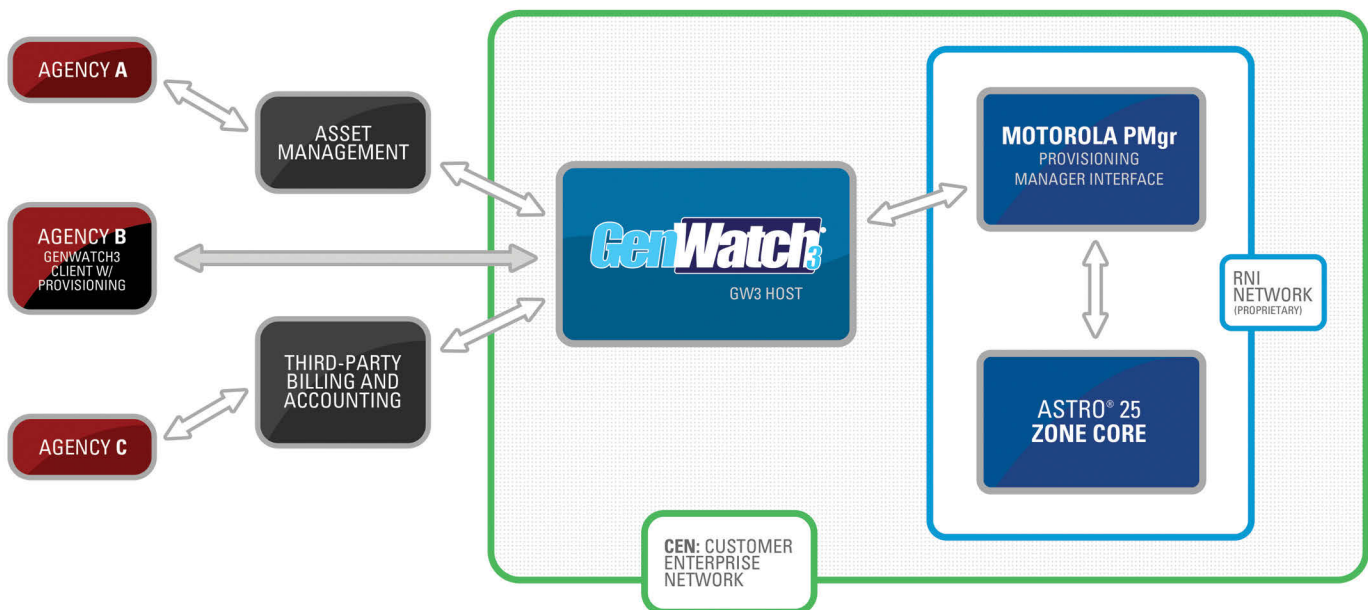
## SINGLE ENTRY POINT PROVISIONING ACROSS REGIONAL MULTI-AGENCY NETWORKS

A GenWatch3® add-on, the Genesis PMI Enhancement works standalone or integrates with other third party accounting and billing or asset management applications. It allows system operators to manage various system applications through a single point of entry.

The Genesis Provisioning Manager Enhancement makes it possible for simple remote provisioning through the Motorola Provisioning Manager Interface and synchronization with third-party asset management and accounting software. With one intuitive interface, securely exchange system information across multiple applications.



## MANAGE PROVISIONING FOR THE ENTIRE NETWORK OR JUST YOUR AGENCY



*Additional information on reverse side >*

## CONTACT GENESIS

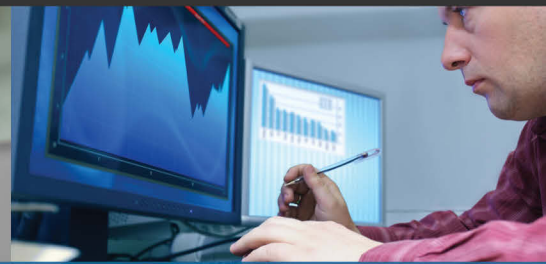
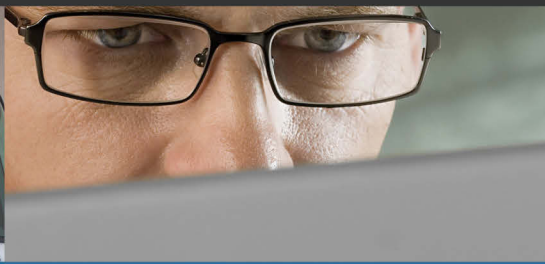
+1 903-787-7400 International  
+1 877-548-0465 Toll Free US & Canada  
[moreinfo@genesishworld.com](mailto:moreinfo@genesishworld.com)  
[www.genesishworld.com/PMI](http://www.genesishworld.com/PMI)



GenWatch3 is a registered trademark of GenCore Candeo, Ltd.  
ASTRO 25 is a registered trademark of Motorola Trademark Holdings, LLC

# GENESIS PROVISIONING MANAGER ENHANCEMENT

## SIMPLE REMOTE PROVISIONING THROUGH THE MOTOROLA PROVISIONING MANAGER



### INTEGRATED PROVISIONING

#### EXISTING GENESIS USERS

A system currently using GenWatch3® has the advantage of comprehensive performance management at their fingertips. The Genesis Provisioning Manager Enhancement easily integrates Genesis software to turn any GenWatch3 Client into a provisioning point into the ASTRO® 25 Network. No additional firewall or server configuration is needed.

### SINGLE POINT OF ENTRY

#### ELIMINATE MULTIPLE ENTRIES

Typically, when a unit is changed, there are a number of entries that need to be updated:

- ▶ Inventory management package
- ▶ Fleet mapping
- ▶ Billing
- ▶ Asset management work orders
- ▶ ...and more

The Provisioning Manager Enhancement provides a single point of entry that updates all solutions in one move, leaving much less room for errors.

### CLOSED LOOP BILLING

#### BILLING ACCOUNTABILITY

On a large regional radio network, where accountability is critical, the Provisioning Manager Enhancement, with its single point of entry, ensures all units are entered in the system. With the Genesis Provisioning Manager Enhancement, no radio is issued without being entered into the billing system.

## ADDITIONAL SPECIFICATIONS

- ▶ Connects to the ASTRO® 25 7.13 or higher Provisioning Manager Interface
- ▶ Integrates with Genesis Trio and GenWatch3®
- ▶ Extends provisioning capabilities to any remote GenWatch3 client
- ▶ Simple integration point for third party application providers through GenIIB
- ▶ Genesis-provided API allows providers to easily add the ability to sync with the ASTRO 25 Core Database
- ▶ Allows application providers to easily add the ability to provision on ASTRO 25 with a single point of entry without risk to the integrity of the process
  - ▶ Accounting/billing systems
  - ▶ Asset/fleet management systems
  - ▶ Internally-developed applications
  - ▶ MCM CommShop 360 already integrated

## CONTACT GENESIS

+1 903-787-7400 International

+1 877-548-0465 Toll Free US & Canada

[moreinfo@genesisworld.com](mailto:moreinfo@genesisworld.com)

[www.genesisworld.com/PMI](http://www.genesisworld.com/PMI)



GenWatch3 is a registered trademark of GenCore Candeo, Ltd.  
ASTRO 25 is a registered trademark of Motorola Trademark Holdings, LLC