

Specifications:

Width	68" (173 cm)
Length	107" (2.72m) with tongue 55" (1.4m) without tongue
Weight	850 lb. (385.5g)
Main Frame	11 ga. formed steel tubing 2" x 3" x .120
Life Mechanism	1500 lb. anti-reversing
Lamp	30° amber LED
Legibility	Up to 1000 ft. (304.8m)
Illumination	Active LED (4 per pixel)
Energy Source	
Battery Bank	(4) 6-volt deep-cycle batteries
Autonomy	21 days @ 78° (25°C)
AC Charger	On-board 45 amp 3-stage charger
Solar	140 watt solar panel array
Recovery Rate	4 hours of sun per 1 day power requirement
Radar - Stalker Stationary Speed Sensor II - 24.125 GHz	
Detection Distance	Up to 1,200' (365 m)
Beam Width	33° x 33°

	MC 360 - 4' x 8'	MC 360 - 3' x 6'
Width	134" (3.4 m) raised 102" (2.6 m) travel	131" (3.3 m) raised 99" (2.5 m) travel
Sign Display		
Height	48" (1.22m)	44" (.91m)
Weight	96" (2.43m)	77" (1.83m)
Viewing Area	44" x 84" (1.11m x 2.13m)	36" x 63" (.91m x 1.6m)
Character Height	9" (22.8cm) / 40" (101.6cm) (up to 4 lines)	9" (22.8cm) / 29" (73.6cm) (up to 4 lines)
Full Matrix Pixels	25 rows / 48 columns	28 rows / 48 columns

Accessories:

- Spare Tire
- Coupler lock
- Wheel lock
- Wheel jack



Message Center 360 | Mast-mount variable message signs

Stalker's Message Center 360 features an innovative rotating mast mount design for easier travel, setup, and positioning, along with a host of features and options.

2 models to choose from:

- 3' x 6' display panel
- 4' x 8' display panel



StalkerRadar.com

STALKER®

Power to Enforce.

applied concepts, inc.
855 East Collins Blvd. ■ Richardson, Texas 75081
972.398.3780 ■ Fax 972.398.3781



006-0484-00 Rev E

800-STALKER

Copyright © 2021 Applied Concepts, Inc. All Rights Reserved. Specifications are subject to change.

STALKER®

Power to Enforce.

StalkerRadar.com

Message Center 360

The Stalker Radar Message Board brightly displays text visible up to 1,000 feet with its full-matrix of MUTCD compliant amber LED characters.

Communication is vital in areas where motorists need to be alerted to specific traffic conditions like construction zones, change of speed, road hazards, special events, and other time-sensitive alerts. Reduce accidents by pro-actively communicating with drivers on your road.

The MC360 has over 300 pre-programmed alert messages and arrows stored in the on-board computer. The MC360 is configured with the Stalker Radar Speed sensor for speed feedback and has an optional statistical traffic analysis package. Additionally, our Shield Communications Plan gives you the ability to easily access messaging and data remotely.

With four deep-cycle batteries in the trailer, our message boards are ready to be deployed for days at a time. When paired with optional sign-mounted solar panels, the system is capable of running perpetually.



Efficient travel configuration



Onboard computer



Optional solar panel system



Optional flashing strobes

Full-Matrix LED Display
Energy-efficient LED display provides legibility at up to 1,000 feet with a 10-year average operational life.

On-Board Dedicated Computer
A NTCIP compliant on-board computer with a 365-day calendar is controlled by a full-size, onboard keyboard. Plus, 250 text, 60 graphic, and 20 arrow board display messages can be preprogrammed and stored in the controller, along with an additional 100 user-created messages.

Deep-Cycle Batteries
Four 6-volt deep-cycle batteries provide up to 21 days of continuous operation, yielding longer operational time between battery charges.

OPTIONS

Solar Panels
Top-mounted solar panels recharge a day's worth of battery use with only 4 hours of bright sunlight allowing for nearly "infinite" field operation.

Integrated Traffic Statistics
The Statistical Package gathers valuable traffic data for improved grant writing support and verification of the sign's impact on traffic speeds.

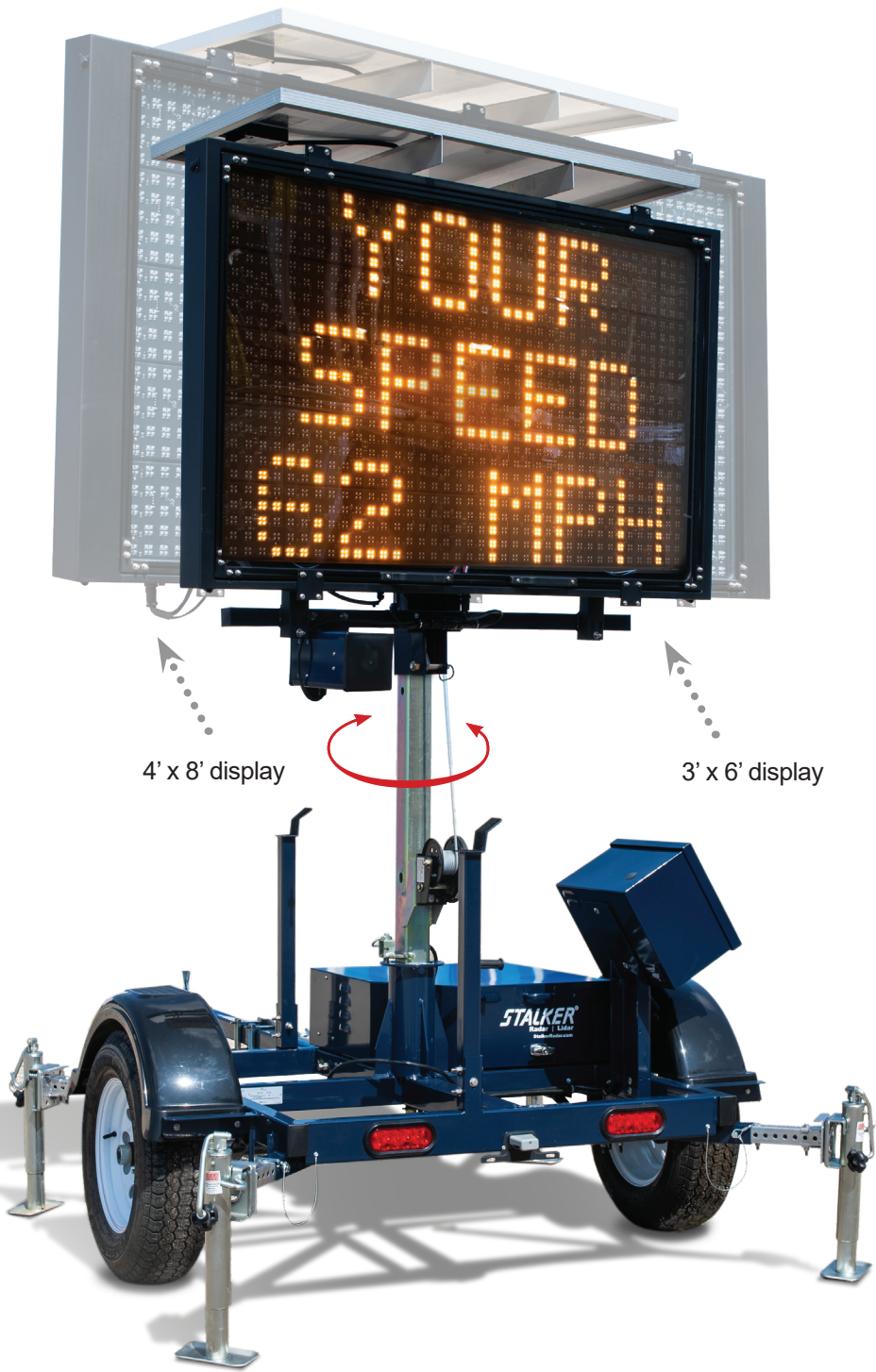
Web-Based 4G Remote Access
Real-time message updating and control is now available. The system is smartphone and tablet compatible and also provides battery voltage monitoring and alerts.

Graffiti-Resistant Powder coat
The trailers can be powder coated with a heavy zinc primer for improved resistance to graffiti and the elements.

Automated License Plate Recognition
The MC360 trailers can be outfitted with an ALPR-ready configuration.

Electric Winch
An electric winch is available to raise and lower the display panel with the push of a button.

Red and Blue Strobes
Configurable to flash when vehicles exceed speed triggers.



Power to Enforce.

PMG

STALKER[®]

Applied Concepts, Inc.
855 East Collins Blvd.
Richardson, Texas 75081
972.398.3780

1-800-STALKER

StalkerRadar.com

STALKER[®]

006-0063-00 Rev B

Copyright © 2020 Applied Concepts, Inc.
All Rights Reserved. Specifications are subject to change.



A powerful speed sign and so much more

At its heart, Stalker Radar's Pole Mounted Graphics display (PMG) sets the standard for range and accuracy – all in a rugged, water resistant housing.

What makes it even more powerful is the ability to function as a variable message sign while communicating with your other NTCIP systems.

At the same time, traffic data analytics is captured for study and exported to pre-designed reports.

Pictured is a 12" PMG with optional MUTCD-compliant YOUR SPEED surround. The unit is powered by a 50-watt solar panel and a quad-bay battery backup system.

Available in 3 character heights: 12", 15", and 18".



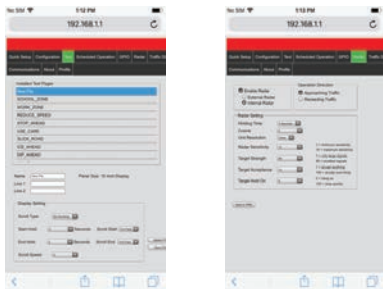
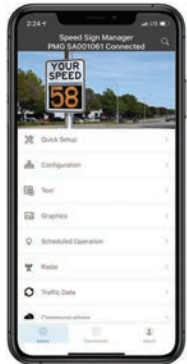
Advanced Features

Advanced Communication Options

- GPIO** The PMG's optional General-Purpose Input/Output (GPIO) controller lets the unit receive external low voltage signals to start, change, or stop a message or a sequence of actions. The Output can be programmed to send a low voltage signal to any external programmable device when a single, or multiple, preset conditions are met.
- Ethernet** The optional Ethernet module connects the PMG to a Network (LAN or WAN) through a standard RJ-45 connector. When using the Ethernet option, an internally hosted web page gives you full remote access to all PMG controls.
- Short Range Wireless** The PMG can communicate with smart devices using a wireless option and standard wireless protocols. Setup operations, text message configuration, graphic design, radar management, traffic data, and scheduling are all executed from your iOS or Android powered device.
- NTCIP** An optional NTCIP protocol module allows equipment from any manufacturer to provide "Sets and Gets" as if we are one closed-loop system. Set the PMG to assist you in efficiently flowing traffic, send icy condition or road closure warnings. Examples of Gets from the PMG are wrong way driver notification, or high water notification.
- Wi-Fi** The Wi-Fi option allows the PMG to be connected to a network from which you gain full access to all settings through its internally hosted web page using the onboard Wi-Fi module. When not needed, the Wi-Fi system can be set to the Off mode to conserve power.



GPIO-driven messaging



Wi-Fi communication

Configuration

PC-Based Application

The PC-based PMG Configuration Application gives the user complete control over all PMG functions and options including school calendar, text/graphics, data collection, and more.

iOS and Android Apps

With the Wireless Control option, apps for both Android and iOS are available to manage your PMG.



For more information go to: slow-down.us

Options

Power Option	Graphics/Messaging						Alert Strobes (3 choices)						Traffic Statistics Software		
	Ethernet	Short Range Wireless	Wi-Fi	GPIO	Simulated Flash	NTCIP	Pole Mount	Hitch Mount	Mini Trailer Mount	YOUR SPEED sign	YOUR SPEED surround	Traffic Statistics Software			
AC	<input type="radio"/>	<input type="radio"/>	<input type="radio"/>	<input type="radio"/>	<input type="radio"/>	<input type="radio"/>	<input type="radio"/>	<input type="radio"/>	<input type="radio"/>	<input type="radio"/>	<input type="radio"/>	<input type="radio"/>	<input type="radio"/>	<input type="radio"/>	<input type="radio"/>
DC	<input type="radio"/>	<input type="radio"/>	<input type="radio"/>	<input type="radio"/>	<input type="radio"/>	<input type="radio"/>	<input type="radio"/>	<input type="radio"/>	<input type="radio"/>	<input type="radio"/>	<input type="radio"/>	<input type="radio"/>	<input type="radio"/>	<input type="radio"/>	<input type="radio"/>
Solar/Battery	<input type="radio"/>	<input type="radio"/>	<input type="radio"/>	<input type="radio"/>	<input type="radio"/>	<input type="radio"/>	<input type="radio"/>	<input type="radio"/>	<input type="radio"/>	<input type="radio"/>	<input type="radio"/>	<input type="radio"/>	<input type="radio"/>	<input type="radio"/>	<input type="radio"/>
Quad-bay battery	<input type="radio"/>	<input type="radio"/>	<input type="radio"/>	<input type="radio"/>	<input type="radio"/>	<input type="radio"/>	<input type="radio"/>	<input type="radio"/>	<input type="radio"/>	<input type="radio"/>	<input type="radio"/>	<input type="radio"/>	<input type="radio"/>	<input type="radio"/>	<input type="radio"/>

☒ Standard

☐ Optional

These are plug-in modules. Up to 4 may be selected

With 3 sizes to choose from and a wide variety of powerful options, the Stalker PMG can be customized to fit a range of applications.

Saving power

Battery Backpack

A compact, form-fitting battery enclosure eliminates the need for a separate battery box, allowing temporary installations without having to route power. Battery may be charged by AC/DC connection or by an optional solar panel system.



Quad-Bay System

A swappable configuration of one to four batteries, depending on power needs of the system. Batteries may be sourced locally and allow for plug and play power. Charging can be done separately, or while installed, using the optional solar panel system.



Battery doors closed



Right battery door open

Saving lives



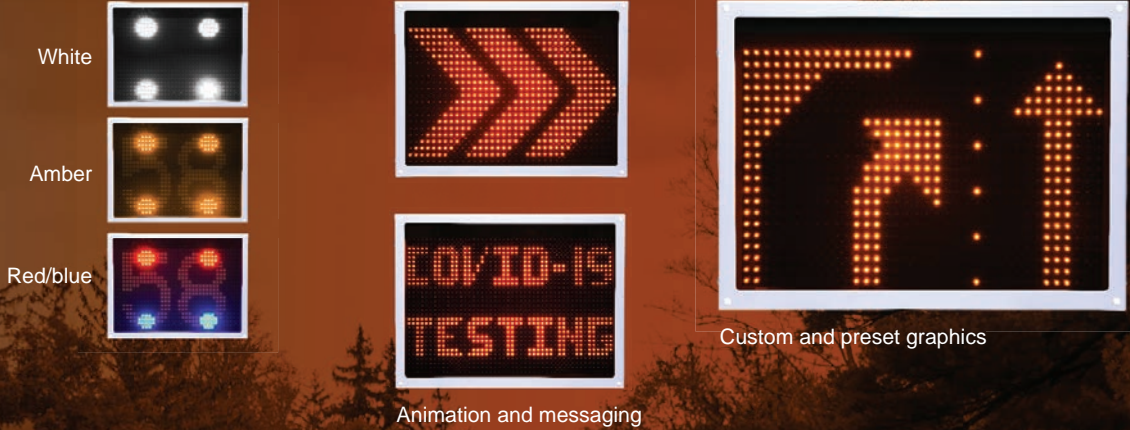
High Water Sensor

Protect drivers from driving through low-lying areas when water over the road reaches dangerous levels.

An external water level sensor can be pole mounted, or placed on or close to the ground, depending on the water depth required for an alert.

In addition, alert messages can be combined, for example, STOP - HIGH WATER - ROAD CLOSED.

Add alert strobes - graphics and messaging



With connectivity comes control



Construction zone messaging

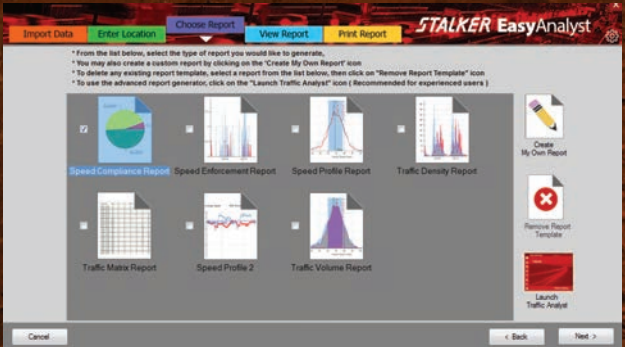


GPIO-driven messaging

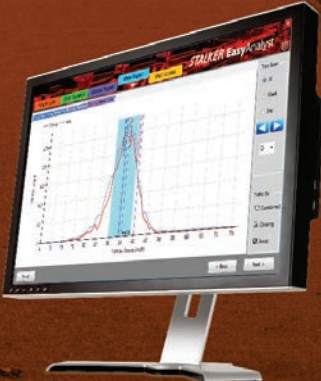


Flood control warnings

Traffic data analytics included



Simple interface



Powerful reporting

Select your power options



Line power



Cigarette lighter plugin
for vehicle mount



Swappable or internal
battery systems



Solar/battery power

Flexible mounting



Secure pole mount



Optional hitch mount



Optional feet and handle

Advanced Communication



Wi-Fi



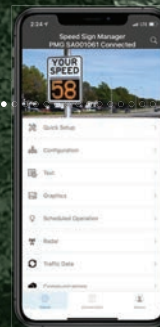
Wired Ethernet



General Purpose
Input/Output
(GPIO)



NTCIP Protocols



Wireless Application

With options come functionality

The PMG can obtain power from a variety of sources including AC line power, vehicle power, and the solar/quad-bay battery system, which operates the unit when not charging.

Advanced communication options allow for signals and data from a variety of sources and protocols to be sent to and from the PMG, all managed by your NTCIP control board, or a PC-based Application or iOS and Android Apps.

And flexible mounting options provide secure installations as well as portability and rapid-deployment.

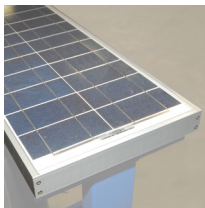
Pictured is an 18" PMG with optional YOUR SPEED sign for quick deployment. Battery powered with optional solar panel.





Stalker SAM | Speed Awareness Monitor

Stalker's SAM trailers are powered by Precision Solar Controls and feature Stalker speed measurement accuracy in a rugged, dependable trailer platform.



■ Optional Solar Panels

■ 18" Amber LED characters - legible at up to 1000 ft.

■ 4D Deep-cycle battery - provides over 18 days of operation and longer time between charges

■ Stalker K-Band Doppler Radar

■ New Optional Programmable LED Violator Alert

■ Optional Integrated Statistics Package

■ Hand-held controller



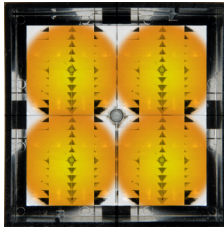
STALKER®

Power to Enforce.

stalkerRadar.com

LED Lamp Matrix and Pulse Modulation

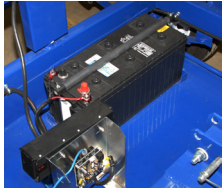
At the heart of the Stalker SAM is Precision Solar Control's LED Lamp Matrix and LED Pulse Width Modulation. The LED Lamp Matrix concentrates and focuses the LEDs' light, allowing the motorist to see the sign at a greater distance and, thus, act on the speed warning quicker.



LED Pulse Width Modulation significantly increases the time between battery charges and powers the LEDs so that they remain at a consistent brightness throughout the battery's discharge cycle.

Stalker K-Band Radar

The speed measurement component is pure Stalker - accurate and durable. Stalker's Stationary Speed Sensor II radar has greater range, sensitivity, and tracking when compared to competitive signs' radar.



4D Deep-cycle 12-volt battery Provides over 18 days of continuous operation yielding longer operational time between battery charges.

Graffiti-resistant paint

The finish keeps the trailer looking clean and neat for a professional department image, while its all steel construction provides a sturdy platform and reduces damage sustained in the field.

Dedicated hand-held controller

Complete programming and diagnostic functions in the palm of your hand.



Four stabilizing/leveling jacks

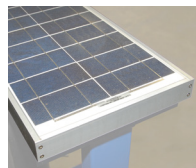
aid in proper placement and stability while allowing one officer to position the SAM on nearly any type of terrain.

Retractable/Removable tongue

Options:

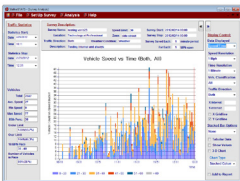
Top-mounted solar panel

The panels recharge a day's worth of battery use with only 2.5 hours of sunlight allowing for "infinite" field operation.



New Programmable LED Violator Alert

High powered LED Violator Alert flashes to warn motorists when they have exceeded a pre-set speed. Three (3) different user-programmable settings and choice of blue/red or white/white.



Integrated statistical package

gathers valuable traffic data for improved grant writing support and verification of the sign's impact on traffic speeds.

STALKER SAM

Specifications:

TRAILER

Width	64" (1.63m)
Length	116" (2.95m) tongue in travel position 57 1/2" (1.5m) tongue in display position
Height	91" (2.31m)
Weight	700 lbs. (317.5kg)
Main Frame	2" x 4" x .120" Steel Tubing

DISPLAY CABINET

Material Thickness	.156" ABS Plastic
Width	36" (.91m)
Height	25 1/2" (.65m)
Depth	5 1/4" (.13m)
Lexan Window Thickness	.125"
Cabinet Temperature Delta	±20°

ENERGY SOURCE

Battery Bank	4D Deep-Cycle Battery 18 days @ 78°F (25°C)
--------------	--

RADAR - STALKER STATIONARY SPEED SENSOR II - 24.125 GHz

Detection Distance	Up to 1,200' (365 m)
Beam Width	30° x 32°

Accessories:



Coupler Lock

Wheel Lock

Wheel Jack

STALKER®

Power to Enforce.

applied concepts, inc.
855 East Collins Blvd. ■ Richardson, Texas 75081
972.398.3780 ■ Fax 972.398.3781

Copyright © 2019 Applied Concepts, Inc. All Rights Reserved. Specifications are subject to change.



006-0455-00 Rev F

800-STALKER



SAM-R | Rotatable Speed Alert Monitor

STALKER SAM-R

The Stalker SAM-R trailer takes all of the features our customers have asked for and put them into one efficient, versatile, and heavy duty package.

■ STALKER K-BAND DOPPLER RADAR

Pure Stalker - Accurate and durable with greater range, sensitivity and tracking.

■ HAND-HELD CONTROLLER

Provides programming and diagnostic functions.



■ 18" AMBER LED CHARACTERS

Legible at up to 1000 ft.

■ GROUP 27 - 12-VOLT BATTERY

Provides 8 - 10 days of continuous operation.

■ TRAVEL CONFIGURATION

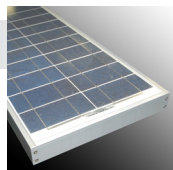
The display panels rotate and lock for easier towing and improved wind resistance.



OPTIONAL:

■ SOLAR PANELS

Recharge a day's worth of battery use with only 2.5 to 3 hours of sunlight allowing for long-term field operation.



■ STATISTICAL PACKAGE

Gathers valuable traffic data for improved grant writing support and verification of the sign's impact on traffic speeds.

■ PROGRAMMABLE LED VIOLATOR ALERT

(3) User-programmable settings in choice of red/blue or white/white.

The Stalker Rotatable Speed Alert Monitor (SAM-R) features 18-inch amber LED characters that are visible at up to 1000 feet. A convenient hand-held controller, Stalker K-Band Doppler radar, and an 8- to 10-day battery round out its standard configuration. Its rotating display and small footprint make towing and deployment easy enough for one person. Plus, optional equipment includes solar panels, a traffic statistics package, and programmable LED violator alerts. It's a versatile, lightweight speed alert trailer rugged enough for continuous duty.



Programmable LED Violator Alert (Optional)

Rotates a full 360°

Innovative design allows display to pivot and lock for easier towing, setup, and positioning.



STALKER®

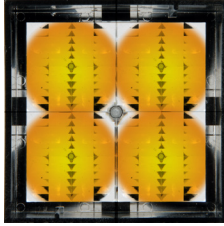
Power to Enforce.

stalkerRadar.com

LED Lamp Matrix and Pulse Modulation

At the heart of the Stalker SAM-R is Precision Solar Control's LED Lamp Matrix and LED Pulse Width Modulation. The LED Lamp Matrix concentrates and focuses the LEDs' light, allowing the motorist to see the sign at a greater distance and, thus, act on the speed warning more quickly.

LED Pulse Width Modulation significantly increases the time between battery charges and powers the LEDs so that they remain at a consistent brightness throughout the battery's discharge cycle.



Stalker Traffic Speed Sensor K-Band Radar

The speed measurement component is pure Stalker - accurate and durable. Stalker's Stationary Speed Sensor II radar has greater range, sensitivity, and tracking when compared to competitive signs' radar.



Group 27 12-volt battery Provides 8-10 days of continuous operation yielding longer operational time between battery charges - longer time with 2nd battery installed.

Graffiti-resistant paint

The finish keeps the trailer looking clean and neat for a professional department image, while its all steel construction provides a sturdy

platform and reduces damage sustained in the field.

Dedicated hand-held controller

Complete programming and diagnostic functions in the palm of your hand.



Four stabilizing/leveling supports

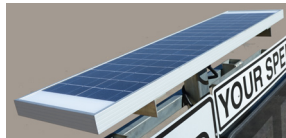
One officer can position the SAM-R on nearly any type of terrain.

Removable tongue

Options:

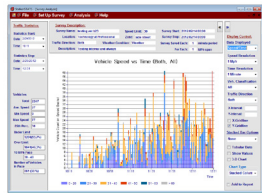
Top-mounted solar panel

recharges a day's worth of battery use with only 2.5 to 3 hours of sunlight allowing for long-term field operation.



Programmable Violator LED Alert

High powered LED Violator Alert flashes to warn motorists when they have exceeded a pre-set speed. Three (3) different user-programmable settings and choice of blue/red or white/white LEDs.



Integrated statistical package

gathers valuable traffic data for improved grant writing support and verification of the sign's impact on traffic speeds.

Additional Group 27 battery



Specifications:

TRAILER

Width	68" (1.73m)
Length	110" (2.8m) tongue in travel position 57½" (1.5m) tongue removed
Height	76" (1.93m) with solar option
Weight	680 lbs. (308 kg)
Main Frame	2" x 4" x .120" Steel Tubing

DISPLAY CABINET

Material Thickness	.156" ABS Plastic
Width	36" (.91m)
Height	25½" (.65m)
Depth	5¼" (.13m)

Lexan® Window Thickness .125"

Cabinet Temperature Delta ± 20°

ENERGY SOURCE

Battery Bank	Group 27 12-volt Battery 8-10 days @ 78°F (25°C)
--------------	---

RADAR - STALKER STATIONARY SPEED SENSOR II - 24.125 GHz

Detection Distance	Up to 1,200' (365 m)
Beam Width	30° x 32°

Accessories:



Wheel Lock



Coupler Lock

Also Available

- Spare Tire
- 2nd Battery

STALKER®

Power to Enforce.

applied concepts, inc.

855 East Collins Blvd. ■ Richardson, Texas 75081
972.398.3780 ■ Fax 972.398.3781

Copyright © 2019 Applied Concepts, Inc. All Rights Reserved. Specifications are subject to change.

006-0504-00 Rev C

800-STALKER



Stalker TDC | Traffic Data Collector

Portable. Accurate. Effortless.

Collect and analyze valuable traffic data to support Grant applications and community policing with set-it-and-forget-it efficiency.

Stalker Radar's Traffic Data Collector begins collecting traffic data as soon as it is deployed. Simply secure it to its locking mounting bracket and turn it on. With a 7-day battery life, the Traffic Data Collector captures vehicle data that can be analyzed later with Stalker's full-featured, easy-to-use Traffic Analyst application, included with every collector.



Collect Now

- Highly accurate NHTSA free-flow traffic count
- Low-key appearance allows for natural traffic patterns
- Up to 7 days of unattended data collection with sealed internal battery
- Simple setup - one button control
- Weatherproof case with lockable enclosure
- Secure, tamper-resistant mounting bracket
- Large storage capacity with simple download

Optional Solar Power Kit

Allows the TDC to operate indefinitely with the minimum required sunlight.



Analyze Later

Stalker Traffic Analyst Application



- Intuitive Survey and Calendar setup
- Powerful visual analysis
- Easy, user-defined report generation
- Compare and toggle between multiple reports
- Group file operations into project folder

STALKER®

Power to Enforce.

stalkerRadar.com

Stalker Traffic Data Collector

Mounts easily

- Tamper-resistant bracket - attach, mount, and lock
- Mounts to wooden utility poles, square or round sign posts

Runs up to 7 days unattended on battery alone

- Sealed lead-acid battery (no leak, even upside down)
- Internal charger
- Optional - External fast charger
- Field-swappable battery

Performs in harshest conditions

- Weatherproof, heavy-duty polycarbonate case
- Lockable enclosure

Stores data securely

- 16 MB of internal memory
- USB memory stick data transfer

Captures data accurately

- Highly accurate NHTSA free-flow traffic count
- Range of up to 800 ft.
- Captures time/date/speed/direction/classification

Optional Solar Power Kit

- Operate indefinitely with minimum required sunlight
- Preserves existing data even with fully discharged battery



Heavy-duty mount



Specifications

Overall size	12.4" x 8.7" x 5.2" (315 x 221 x 132 mm)
Weight without battery	7.7 lbs (3.49 kg)
Weight with typical battery	21.4 lbs. (9.71 kg)
Case material	Polycarbonate
Operating temperature	-22° to +122° F (-30° to +50° C)
Battery	Sealed lead-acid
Typical battery capacity	20 amp-hours
Unattended operation - without solar panel	7 days
Radar sensor	Stalker Traffic Statistics Sensor
Directionality	Approaching and receding
Speed resolution	1 mph (1 km/h)
Typical range	800 ft. typical (240 m)
Beam width	33° x 33°, up to 3 lanes of traffic
Data memory	16 MB internal memory Up to 32 GB external (memory stick)
Connection method	USB
Warranty	24 months

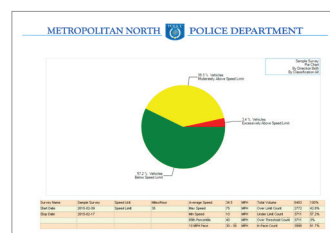
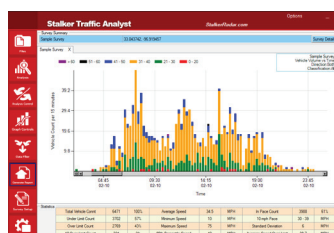
Stalker Traffic Analyst Application

When the survey period is complete, data can be downloaded by either connecting a PC or by attaching a USB memory stick to the Traffic Data Collector's USB port. Data is automatically transferred to the memory stick without user action.

Traffic data statistics to support Grants and community policing

- Easily apply location, traffic direction, weather, etc. to recorded data
- Narrow focus to specific dates and times
- Create full color presentations for Grant applications and other need justifications in a variety of formats

Stalker's Traffic Analyst application presents data in such a way that makes the survey analysis results clearly understandable. Analysis Control, Graphic Controls, and Data Filtering floating palettes surround the visual analysis window. Changes made to parameters update in real time.



STALKER®

Power to Enforce.

applied concepts, inc.
855 East Collins Blvd. ■ Richardson, Texas 75081
972.398.3780 ■ Fax 972.398.3781

Copyright © 2021 Applied Concepts, Inc. All Rights Reserved. Specifications are subject to change.



006-0590-00 Rev D

800-STALKER



Stalker Traffic Analyst | Powerful Traffic Data Tool

Making traffic statistics work for you.

Collect and analyze valuable traffic data in support of Grant applications and community policing, with industry-leading effectiveness.

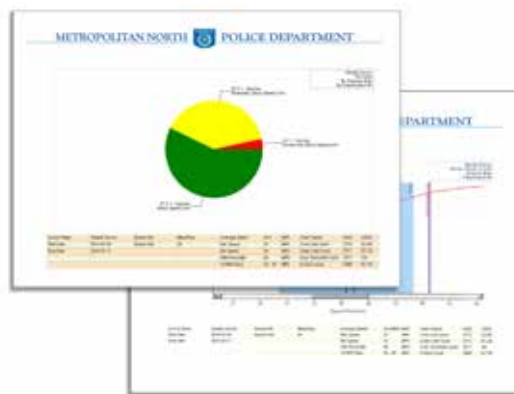
The very first section in most Grant applications is to define the need. Whether for adjusting a speed limit, purchasing a speed/message sign, or allocation of department resources, properly assembled traffic data can make all of the difference between winning or losing an application. Powerful traffic statistic tools are essential when analyzing aggregate data.

The new Stalker Traffic Analyst is that tool. Updated analysis controls allow the user to take raw data and display it by count vs time, count vs speed, and 85th percentile, just to name a few. Data can be split, graphed, filtered, and then rendered in a color report designed with Agency Branding and support information.

Beginning with the setup, intuitive survey management tools walk the user through calendar setup, location details, speed and time resolutions, vehicle classification, speeds, distances, and more.



- **Intuitive Survey and Calendar setup**
- **Powerful Visual analysis**
- **Easy, user-defined report generation** ▶
- **Compare and toggle between multiple reports**
- **Group file operations into project folder**



STALKER®

Power to Enforce.

StalkerRadar.com



Powerful Visual Analysis

The analysis window is the visual heart of the program. The floating palettes control the visual display and survey details may be added such as Google Map/satellite views, descriptions, and notes.



Floating Palettes

■ Analysis Control

The Analysis Control palette where the analysis type is chosen and then applied to the analysis window.

- Count vs Time
- Weekly Count vs Time
- Count vs Speed
- Percentile Chart
- Average Speed vs Time
- Speed vs Time Bubble Chart
- Enforcement - Pie chart - **NEW**

A simple tool for Law Enforcement, citizens, city council, and management. Quickly display vehicle speeds below, moderately above, and excessively above speed limit threshold.

■ Graphic Controls

The Graph Controls palette provides additional options such as grid detail, data values, display type (graph or tabular) and graph type.

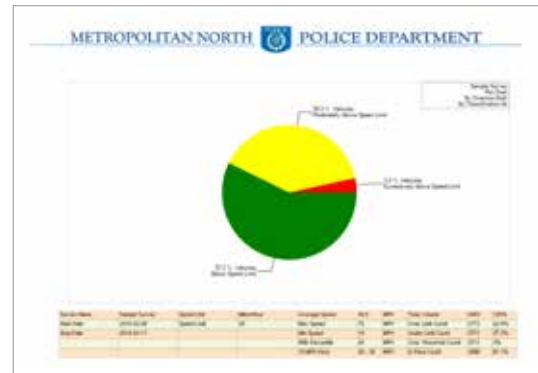
■ Data Filtering

Fine tune the data by more selective parameters such speed, dates, times, classification, and traffic direction.



Analysis Window

Tabular Data



Sample Report

Easy Report Generation

Simple setup allows for custom design of your reports with Agency information, branding, photos, and other supporting details for printing and distribution.

Intuitive Survey Setup

An intuitive setup window steps you through all of the necessary data to be included:

- Location details
- Survey configuration
- Speed/time resolutions and vehicle classifications
- Calendar setup
- Modes, days of the week, start/stop times

Simple Sensor Setup

Communication between the Traffic Analyst program and the Stalker Traffic Statistics sensor is simple and virtually automatic.



Survey Setup

STALKER®

Power to Enforce.

applied concepts, inc.
855 East Collins Blvd. ■ Richardson, Texas 75081
972.398.3780 ■ Fax 972.398.3781

Copyright © 2019 Applied Concepts, Inc. All Rights Reserved. Specifications are subject to change.



006-0593-00 Rev B

800-STALKER