

## Panorama Antennas Limited

### Mobile and Mission Critical Antennas Catalog Offering

#### 20% Discount off MSRP for Main Line Items

Panorama is a trusted supplier of mobile radio antennas supporting a variety of consumer, professional and mission critical technologies. They supply antennas for First Responders catering for TETRA, P25 and other secure communications technologies some combined with LTE, GPS or WiFi. Whip, low profile, fixed site, specialist and combination solutions support a huge range of applications and mounting scenarios.

#### Key Notes:

- Freight & Sales Tax are not included in pricing
- Services are available – please contact Paula Sauls or Tony Bailey for details
- MSRP prices are subject to change

**This list represents a sample of models. Please inquire with ProLogic ITS if the model you seek is not listed.**

B4BE-6-60-05SP	BRACKET MOUNT ANTENNA 617-960/1710-6000MHz 0.5m SMA(m)
B4BE-6-60-10SP	BRACKET MOUNT ANTENNA 617-960/1710-6000MHz 10m SMA(m)
B4BE-6-60-2SP	BRACKET MOUNT ANTENNA 617-960/1710-6000MHz 2m SMA(m)
B4BE-6-60-5SP	BRACKET MOUNT ANTENNA 617-960/1710-6000MHz 5m SMA(m)
B4BEE-6-60-2SP	BRACKET MOUNT ANTENNA 617-960/1710-6000MHz 2m SMA(m)
GPSD4-6-60	4G/5G 4x4 MIMO SHARKFIN ANT. 1x GPS/GNSS - BLACK
GPSD4-6-60-D	4G/5G 4x4 MIMO SHARKFIN ANT. 2x WIFI 1x GPS/GNSS - BLACK
GPSD4-6-60-Q	4G/5G 4x4 MIMO SHARKFIN ANT. 4x WIFI 1x GPS/GNSS - BLACK
GPSD4-6-60-T	4G/5G 4x4 MIMO SHARKFIN ANT. 3x WIFI 1x GPS/GNSS - BLACK
GPSD-7-27	MIMO GPS/GNSS 2G/3G/4G ANT
GPSD-7-27-24-58	MIMO GPS/GNSS 2G/3G/4G WLAN ANT
GPSDC-7-27	MIMO COAX GPS/GNSS 2G/3G/4G WHIP

#### For quotes or more information, contact:

Paula Sauls, Account Manager – [Paula.Sauls@ProLogicITS.com](mailto:Paula.Sauls@ProLogicITS.com)

Tony Bailey, Government Manager – [Tony.Bailey@ProLogicITS.com](mailto:Tony.Bailey@ProLogicITS.com)

GPSDC-7-27-24-58	MIMO COAX GPS/GNSS 2G/3G/4G WLAN ANT
GPSDS4-7-38	SHKFIN 2x MIMO CELL S4 LTE + GNSS
GPSDS4-7-38-D24	SHKFIN 2x MIMO CELL S4 LTE WIFI + GNSS
GPSDS4-7-38-Q24	SHKFIN MIMO 4G / S4 UHF + 4x WIFI + GPS/GNSS - BLK
LPB-6-60-05SP	LO PRO ANTENNA 617-960/1710-6000MHz 0.5m SMA(m)
LPB-6-60-1SP	LO PRO ANTENNA 617-960/1710-6000MHz 1m SMA(m)
LPB-6-60-2RSMAP	LO PRO ANTENNA 617-960/1710-6000MHz 2m R/A SMA(m)
LPB-6-60-2SP	LO PRO ANTENNA 617-960/1710-6000MHz 2m SMA(m)
LPBEM-6-60-2F	LOW PROF ANT 617-6000MHz 2m FME(f)
LPBEM-6-60-2SP	LOW PROF ANT 617-6000MHz 2m SMA
LPBEM-6-60-5SP	LOW PROF ANT 617-6000MHz 5m SMA
A5GH-TET	ANT 5dBi GAIN HINGE BLK 380-430MHz
A5GM-TET	ANTENNA 5dBi GAIN BLK 380-450MHz
A5SG-TET	ANT ELEMENT 5dBi GAIN BLK 380-430
AAGH-B	ANT 760-900MHz 3dB HINGED BLACK
AC3Q-B	ANTENNA M'BAND CELL 0dB BLK
AC3QH-B	ANTENNA M'BAND CELL 0dB HINGE BLK
ACEGH-B	ANTENNA 900MHz 5dB HINGE BLACK

**For quotes or more information, contact:**

Paula Sauls, Account Manager – [Paula.Sauls@ProLogicITS.com](mailto:Paula.Sauls@ProLogicITS.com)

Tony Bailey, Government Manager – [Tony.Bailey@ProLogicITS.com](mailto:Tony.Bailey@ProLogicITS.com)



# PANORAMA ANTENNAS

Panorama's constant cutting-edge development ensures that its antennas meet the demands of the very latest technology. With over 70 years' experience in delivering world-class antenna products, Panorama's current product range reflects its unparalleled expertise in providing high-quality performance antennas.

## MiMo Dash Mount

2x2 MiMo 5G/4G/3G/2G LTE  
Optional 1x or 2x2 MiMo WiFi  
Optional integrated GPS/GNSS  
Mount on or under dashboard



## 5G Dome Antenna

4x4 MiMo 5G/4G LTE  
617-960 / 1710-6000MHz  
Optional Integrated GPS/GNSS  
Up to 6x6 MiMo WiFi 2.4/5.0GHz  
UN118 Cables, IK10 Rated & IP69K



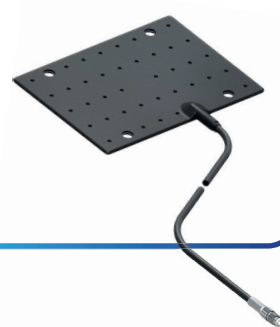
## GPSD MiMo Sharkee®

2x2 MiMo 5G/4G/3G/2G LTE  
Integrated GPS/GNSS  
Optional 2x2 MiMo WiFi 2.4/5.0GHz



## UHF Bumper Antenna

Fully covert application  
Mounted behind plastic bumper  
Flexible construction  
Does not require any tuning



## Internal SiSo LTE Antenna

4G/3G/2G LTE  
698-2700MHz  
Simple adhesive pad fitment  
Can be fitted on glass or plastic panel



## Panel Mount LTE Antenna

Covers 5G/4G/3G/2G LTE  
600-6000MHz  
Low Profile, compact design  
High impact resistant housing



## Great White® 5G

2x2 MiMo 5G/4G/3G/2G LTE  
617-960 / 1710-6000MHz  
Optional Integrated GPS/GNSS  
Up to 6x6 MiMo WiFi 2.4/5.0GHz  
UN118 Cables, IK10 Rated & IP69K



## Tri-Band Whips

Tri band function  
Flexible rod with wound element  
Fits Panorama GPS combination bases



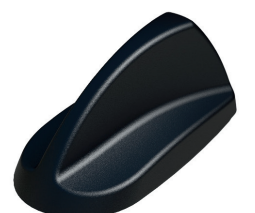
## The Fez LTE Antenna

4G/3G/2G LTE  
698-2700MHz  
Optional 1x or 2x2 MiMo WiFi 2.4 / 5.0GHz  
Optional integrated GPS/GNSS  
Ground plane independent



## GPSB Sharkee®

4G/3G/2G LTE  
Dualband 2.4/5GHz WiFi  
Integrated GPS/GNSS  
OEM Style Sharkfin housing



MAKING THE CONNECTION





**IP69K  
RATED**

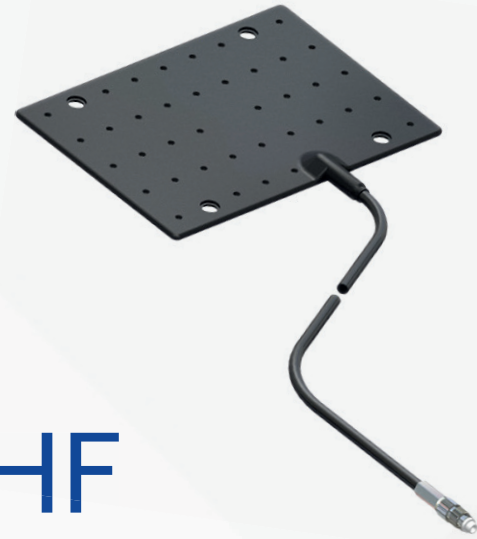
## 5G Dome Antenna

### FEATURES

4x4 MiMo 5G/4G LTE  
617-960 / 1710-6000MHz  
Optional Integrated GPS/GNSS  
Up to 6x6 MiMo WiFi 2.4/5.0GHz  
UN118 Cables  
IK10 Rated & IP69K

Part no.	GPS/ GNSS	MiMo LTE	MiMo WiFi
LPMM4-6-60		4x4	
LGMM4-6-60	•	4x4	
LGMDM4-6-60-24-58	•	4x4	2x2
LGMTM4-6-60-24-58	•	4x4	3x3
LGMQM4-6-60-24-58	•	4x4	4x4
LGMHM4-6-60-24-58	•	4x4	6x6

\*Part numbers refer to the white version only

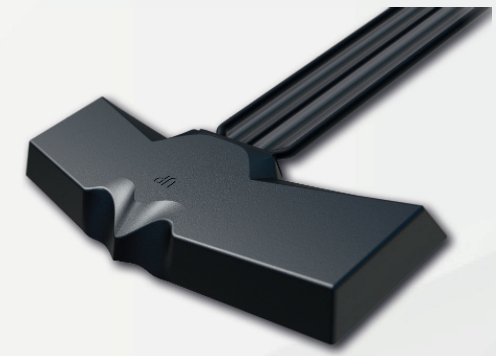


## UHF Bumper Antenna

### FEATURES

Fully covert application  
Mounted behind plastic bumper  
Flexible construction  
Does not require any tuning

Part no.	Frequency (MHz)	
BMPI-S1	380-400	
BMPI-S2	410-430	
BMPI-U	430-472	
BMPI-S4	450-470	
BMPI-7-27	700-2700	Dual Version
BMP2-DPD-S1		380-400
BMP2-DPD-S2		410-430
BMP2-DPD-S4		450-470



## MiMo Dash Mount

### FEATURES

2x2 MiMo 5G/4G/3G/2G LTE  
Optional 1x or 2x2 MiMo WiFi  
Optional integrated GPS/GNSS  
Mount on or under dashboard

Part no.	GPS/ GNSS	MiMo LTE	MiMo WiFi	WiFi
BATM-7-60		2x2		
BATGM-7-60	•	2x2		
BATGM-7-60-S24-58	•	2x2		•
BATGM-7-60-24-58	•	2x2	2x2	

## GPSD MiMo Sharkee®

### FEATURES

2x2 MiMo 5G/4G/3G/2G  
Integrated GPS/GNSS  
Optional 2x2 MiMo WiFi 2.4/5.0GHz

Part no.	GPS/ GNSS	MiMo LTE	MiMo WiFi	P25
GPSD-7-27	•	2x2		•
GPSD-7-27-24-58	•	2x2	2x2	•



**IP66  
RATED**

## Internal SiSo LTE Antenna

### FEATURES

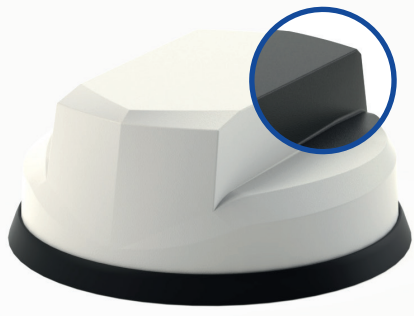
4G/3G/2G LTE  
698-2700MHz  
Simple adhesive pad fitment  
Can be fitted on glass or plastic panel

Part no.	Termination
EF-BC3G-26-3SP	SMA Male



For more information please contact  
[sales.nam@panorama-antennas.com](mailto:sales.nam@panorama-antennas.com)





**IP69K  
RATED**

## Great White® 5G

### FEATURES

2x2 MiMo 5G/4G/3G/2G LTE  
617-960 / 1710-6000MHz  
Optional Integrated GPS/GNSS  
Up to 6x6 MiMo WiFi 2.4/5.0GHz  
UN118 Cables, IK10 Rated & IP69K

Part no.	GPS/ GNSS	MiMo LTE	MiMo WiFi
LPMM-6-60		2x2	
LGMM-6-60	●	2x2	
LGMDM-6-60-24-58	●	2x2	2x2
LGMTM-6-60-24-58	●	2x2	3x3
LGMQM-6-60-24-58	●	2x2	4x4
LGMHM-6-60-24-58	●	2x2	6x6

\*Part numbers refer to the white version only



## Panel Mount LTE Antenna

### FEATURES

Covers 5G/4G/3G/2G LTE  
600-6000MHz  
Low Profile, compact design  
High impact resistant housing

Part no.	Termination	Cable Length
LPB-6-60-05SP	SMA Male	0.5m (1.6')
LPB-6-60-2SP	SMA Male	2m (6.6')
LPB-6-60-2F	FME Male	2m (6.6')
LPB-6-60-5SP	SMA Male	5m (16.4')
LPB-6-60-5F	FME Male	5m (16.4')

## Tri-Band Whips



### FEATURES

Tri band function  
Flexible rod with wound element  
Fits Panorama GPS combination bases

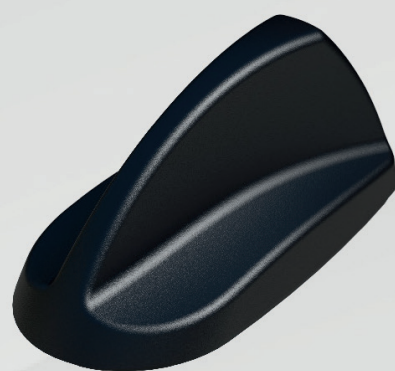
Part no.	Frequencies (MHz)
ASFC-155-U2-B1	150-160 / 450-512 / 745-806
ASFC-155-U2-S5	150-160 / 450-512 / 806-876
ASF-155-S4-821	150-160 / 450-470 / 764-896

\*Base sold separately

## GPSB Sharkee®

### FEATURES

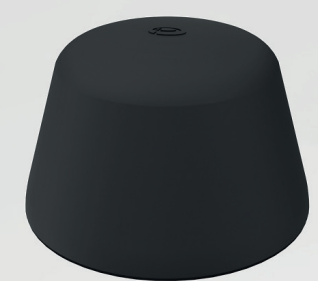
4G/3G/2G LTE  
698-2700MHz  
Dualband 2.4/5GHz WiFi  
Integrated GPS/GNSS  
OEM Style Sharkfin housing



**IP69K  
RATED**

Part no.	GPS/ GNSS	LTE	WiFi	P25
GPSB	●	●	●	●

## The Fez LTE Antenna



### FEATURES

4G/3G/2G LTE  
698-2700MHz  
Optional 1x or 2x2 MiMo WiFi 2.4 / 5.0GHz  
Optional integrated GPS/GNSS  
Ground plane independent

Part no.	GPS/ GNSS	LTE	WiFi	MiMo WiFi
LPE-7-27		●		
LGE-7-27	●	●		
LGE-7-27-24-58	●	●	●	
LGEM-7-27-24-58	●	●		2x2

For more information please contact  
[sales.nam@panorama-antennas.com](mailto:sales.nam@panorama-antennas.com)



# FirstNet

## Antenna Guide

---

PRODUCT CATALOGUE



## Over 70 Years of Experience

Panorama Antennas is a privately owned family business, now in its third generation, and is a leading designer and manufacturer of antennas for wireless communication. Established in London in 1947, Panorama started life as a manufacturer of consumer products and buoyed by huge demand in 1952, began manufacturing TV components and antennas. With the transistor radio trend of the 1960s, Panorama's expert knowledge swiftly led us into the manufacturing of communication antennas.

Throughout the 70s and 80s, Panorama evolved to become the first specialized communication antenna manufacturer in the UK, developing a range of cellular antennas to coincide with the launch of the mobile phone network in Britain. 1990 was a year of huge change as Panorama found itself revolutionizing cellular glass mount antenna technology, filing a patent application for the first ever solid state coupling circuit. Through creating a new benchmark for quality in the production of components and leading technology development, Panorama has grown side by side with the cellular telecommunications industry.

Today Panorama produces antennas for the world's leading communication companies and has grown to include over 100 staff in 5 international sales offices, as well as operating 4 fully owned subsidiaries. Manufacturing, design and development are located in London less than a mile from the original factory. Our network of international sales representatives means that all customers get the attention and advice they require, providing local support on a global scale.

## Antennas For Next Generation

Panorama's constant cutting-edge research ensures that our antennas meet the demands of the very latest technology. With over 70 years' experience in delivering world-class antenna products, Panorama's current product range reflects our unparalleled expertise in providing high-quality performance antennas.

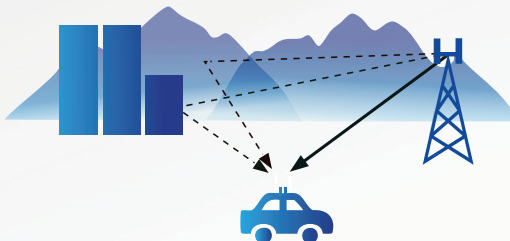


## Ready for FirstNet

Panorama Antennas is the leading antenna supplier to public safety organisations around the world. Our success is built on understanding the evolving needs of the public safety sector, which is driven by the increasing demand for ever more complex communication systems in vehicles, whilst at the same time, the need to reduce installation costs and improve vehicle residual value at end of service life. Panorama's products have already been extensively proven in providing voice and data communications for public safety in the US and beyond. FirstNet uses the AT&T 4G network, which operates on Band 14 and other bands to provide a prioritized and resilient mobile broadband bearer for mission critical data and voice services. The antenna is a critical part of a FirstNet vehicle installation in order to achieve the optimum 4G broadband performance. A key feature of LTE is that it uses MiMo (Multiple Input, Multiple Output) technology to enable a high speed broadband connection. Standard LTE uses a 2x2 system, with two antennas at the client terminal, but Cat 18/20 Advance Pro devices require a 4x4 MiMo antenna. MiMo function utilises multi-path signal propagation to increase the channel capacity, providing faster download/upload speeds. A MiMo system requires the antennas to have a defined level of isolation and a low correlation factor, which Panorama provides in its' "all in one" solutions.

Panorama has a new range of 5G antennas, which include the 5G Great White (2x2) 5G Mako (4x4) and the new generation 5G Sharkee (2x2) – all of these antennas are suitable for use with FirstNet MegaRange™ Class 1 HPUE devices and cover the 4G/5G Low and Mid Band (sub 6GHz) range. They also feature a new GPS/GNSS antenna module which incorporates enhanced filtering for resilient operation alongside Band 13/14 use.

The 5G Sharkee® builds on the success of the original MiMo Sharkee, with a rugged OEM style shark fin housing with single hole mounting and narrow footprint to enable fitment on SUV ribbed roofs. It features internal antennas for GPS/GNSS, 2x2 MiMo for 4G/5G and 2x2, 3x3 or 4x4 MiMo dual band WiFi antennas and with the GPSD version, a comms whip can be fitted. Panorama has a complete range of MiMo multi-function antenna solutions, which are easy to install whilst providing pre-defined MiMo performance. In addition, we have a range of single (SiSo) multi-band cellular antennas suitable for 4G/LTE, which could be used where required. Panorama continues to develop new products for 4G/5G to ensure that we are at the front in being able to offer high performance, cost effective solutions for public safety users.





**IP69K  
RATED**



## Great White® 5G MiMo Antenna

### FEATURES

2x2 MiMo 5G/4G LTE  
617-960 / 1710-6000MHz  
Optional Integrated GPS/GNSS  
Up to 6x6 MiMo WiFi 2.4/5.0GHz  
ECE 118.03 Compliant Cables  
IK10 Rated

The LPMM/LGMM range provides effective 2x2 MiMo LTE operation with excellent isolation and low correlation coefficient. Available in Black or White. Optional GPS/GNSS module incorporates advanced filtering.

Part no.	MiMo LTE	GPS/ GNSS	MiMo WiFi
LP-IN2455**	2x2		
LG-IN2456**	2x2	•	
LG-IN2457**	2x2	•	2x2
LG-IN2532**	2x2	•	3x3
LG-IN2458**	2x2	•	4x4
LG-IN2448**	2x2	•	6x6

\*Part numbers refer to the black version only

\*\* Antenna kit supplied with 5m / 17ft of cable assembly with SMA male (cellular & GNSS) and reverse polarity SMA male (WiFi).

\*\*\*Other lengths cables and connectors available upon request.

Mobility

## MAKO® 5G MiMo Antenna

### FEATURES

4x4 MiMo 5G/4G LTE  
617-960 / 1710-6000MHz  
Optional Integrated GPS/GNSS  
Up to 6x6 MiMo WiFi 2.4/5.0GHz  
ECE 118.03 Compliant Cables  
IK10 Rated

The LPMM4/LGMM4 enables multiple antenna functions to be fitted using a single hole mount. Designed for use with Advance Pro routers that require a 4x4 5G/4G LTE MiMo antenna system. Available in Black or White. Optional GPS/GNSS module incorporates advanced filtering.

**IP69K  
RATED**



Part no.	MiMo LTE	GPS/ GNSS	MiMo WiFi
LP-IN2443**	4x4		
LG-IN2444**	4x4	•	
LG-IN2445**	4x4	•	2x2
LG-IN2446**	4x4	•	4x4
LG-IN2447**	4x4	•	6x6

\*Part numbers refer to the black version only

\*\* Antenna kit supplied with 5m / 17ft of cable assembly with SMA male (cellular & GNSS) and reverse polarity SMA male (WiFi).

\*\*\*Other lengths cables and connectors available upon request.

Mobility

# MiMo Sharkee® 5G

## FEATURES

2x2 MiMo 5G/4G LTE  
617-960 / 1710-6000MHz  
Optional Integrated GPS/GNSS  
Up to 4x4 MiMo WiFi 2.4/5GHz  
ECE 118.03 Compliant Cables

The SHKG Sharkee® range has become a byword for industry leading technology in a discrete OEM sharfin housing. The 6-60 brings 5G capability to the Sharkee® family.

**IP69K  
RATED**



Part no.	MiMo LTE	GPS/ GNSS	MiMo WiFi	External Whip
GPSD-6-60*	2x2	•		•
GPSD-6-60-DW*	2x2	•	2x2	•
GPSD-6-60-TW*	2x2	•	3x3	•
GPSD-6-60-QW*	2x2	•	4x4	•
SH-IN2616**	2x2	•		
SH-IN2617**	2x2	•	2x2	
SH-IN2618**	2x2	•	3x3	
SH-IN2619**	2x2	•	4x4	

\*Part numbers refer to the black version only  
\*\* Antenna kit supplied with 5m / 17ft of cable assembly with SMA male (cellular & GNSS) and reverse polarity SMA male (WiFi).  
\*\*\*Other lengths cables and connectors available upon request.

**IP66  
RATED**



# GPSB Sharkee®

## FEATURES

4G/3G/2G LTE  
698-960 / 1710-2700MHz  
Dualband 2.4/4.9-6GHz WiFi  
Integrated GPS/GNSS  
Optional P25 Antenna Whip

The GPSB ‘Sharkee’ is an automotive multi-function antenna, which has a mounting stud for a whip antenna. A wide range of whips (single, dual or tri-band) are available for VHF/UHF and 700/800MHz band operation.

The GPSB reduces visual impact and only requires a single 19mm (3/4”) hole, which results in reduced installation time/cost whilst helping to maintain vehicle resale value.

Part no.	LTE	GPS/ GNSS	WiFi
GPSB	•	•	•

Mobility

Mobility





# MiMo Transit Antenna

## FEATURES

2x2 MiMo 5G/4G LTE  
 698-960 / 1710-6000MHz  
 Optional Integrated GPS / GNSS  
 Fully Rail Industry Certified

The TRNM(G) MiMo antenna series is designed specifically for use on trains, trams and buses underground or over ground. Incorporating two elements operating wideband across all frequencies from 698MHz to 6000MHz the TRNM(G) range is versatile and future proof.

The TRNM(G) series covers GSM-R, 700MHz LTE, 800MHz TETRA and trunking bands along with all Cellular and GSM frequencies, 2.4 & 5.8GHz WLAN, 2.6 GHz LTE and WIMAX all in one housing.

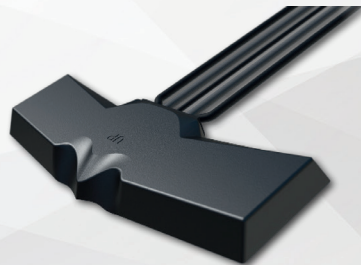
Part no.	MiMo LTE	GPS/ GNSS
TRNM-7-60-NJ	2x2	
TRNMG-7-60-NJ	2x2	•

# Covert MiMo Antenna

## FEATURES

2x2 MiMo 5G/4G LTE  
 617-960 / 1710-6000MHz  
 Optional Integrated GPS/GNSS  
 Optional SiSo or 2x2 MiMo WiFi 2.4/5GHz  
 Compliant with ECE R118.03 fire safety

The Panorama BAT range is an ideal 2x2 MiMo 4G/5G antenna for Covert installations with fall back capability to 3G/2G. It can also incorporate a GPS/GNSS antenna and Single or 2x2 MiMo dual band WiFi antenna(s).



Part no.	MiMo LTE	GPS/ GNSS	WiFi	MiMo WiFi
BATM-7-60	2x2			
BATGM-7-60	2x2	•		
BATGM-7-60-S24-58	2x2	•	•	
BATGM-7-60-24-58	2x2	•		2x2

# Directional 4x4 MiMo 4G/5G Antenna

## FEATURES

4x4 MiMo High Gain Directional Antenna for 4G/5G LTE  
617-960 / 1710-6000MHz  
Supports New Generation CAT18/20 Devices  
Optional Integrated GPS/GNSS  
Suitable for wall or mast mounting

The WMM4G-6-60 is a high gain directional 4x4 MiMo antenna for 4G and 5G networks. It incorporates four pairs of wideband element assemblies in a single housing and is designed to support fixed site CAT18/20 client devices. It offers 6dBi peak gain for 617- 960MHz and 9dBi peak gain for 1710-6000MHz.



Part no.	Termination	Cable Length
WMM4G-6-60-05NJ	4x N Socket (f)	0.5m (1.6')
WMM4G-6-60-5SP	4x SMA (m)	5m (17')
WM-IN2582-10	4x N Socket (f)	10m (33')
WM-IN2582-15	4x N Socket (f)	15m (50')

\*Extension cables available upon request.

Branch



# Directional 2x2 MiMo 4G/5G Antenna

## FEATURES

2x2 MiMo High Gain Directional Antenna for 4G/5G LTE  
617-960 / 1710-6000MHz  
Optional Integrated GPS/GNSS  
Suitable for wall or mast mounting

The WMM2G-6-60 is a high gain directional 2x2 MiMo antenna for 4G and 5G networks. It incorporates two wideband element assemblies in a single housing and is designed to support fixed site client devices. It offers 6dBi peak gain for 617-960MHz and 9dBi peak gain for 1710-6000MHz.

Part no.	Termination	Cable Length
WMM2G-6-60-05NJ	2x N Socket (f)	0.5m (1.6')
WMM2G-6-60-5SP	2x SMA (f)	5m (17')

\*Extension cables available upon request.

Branch



**IP65  
RATED**



## External Mount 4G/5G MiMo Antenna

### FEATURES

698-960 / 1710-3800MHz

Optional Integrated GPS / GNSS

Supports MiMo & Diversity across 4G/5G

Two wideband elements with gain

Durable wall mount housing

Suitable for mast, wall and desk mounting

The WMMG antenna provides an innovative and future proof solution for 3G/4G and 3.8GHz 5G networks. Incorporating two separately fed ultra wideband elements in a single housing the WMMG is equipped to provide client side MiMo and diversity support for the networks of today and tomorrow.

Part no.	Termination	Cable Length
WMMG-7-38-03NJ	2x N Socket (f)	0.3m (1')
WMMG-7-38-5SP	2x SMA Male	5m (17')

\*Extension cables available upon request.

## Low Profile Panel Antenna

### FEATURES

Cost effective 2G/3G/4G/5G coverage

617-960 / 1710-6000MHz

Integrated low loss cable

Robust but subtle design

The LPB-6-60 is supplied with integrated 5mm / 0.2" double shielded CS29 coaxial cable and is available with a wide variety of connectors fitted. This Antenna is an ideal solution for use in industrial and domestic environments with cellular modems/routers and Machine to Machine (M2M) wireless connectivity applications.

**IP65  
RATED**



Part no.	Termination	Cable Length
LPB-6-60-05SP	SMA Plug	0.5m (1.6')
LPB-6-60-2SP	SMA Plug	2m (6.6')
LPB-6-60-5SP	SMA Plug	5m (17')

Branch

IoT

# 4G/5G Bracket Mount Antenna

## FEATURES

- Cost Effective 2G/3G/4G/5G coverage
- 617-960 / 1710-6000MHz
- Wall, mast or panel mount
- Integrated low loss cable

The B4BE antenna is a cost effective omni-directional broad band antenna for 5G/4G/3G and 2G devices from 617-960/1710-6000MHz and is suitable for external or internal installation. The omni-directional radiation pattern allows easy placement of the antenna in an elevated position.

**IP65  
RATED**



Part no.	Termination	Cable Length
B4BE-6-60-05SP	SMA Plug	0.5m (1.6')
B4BE-6-60-2SP	SMA Plug	2m (6.6')
B4BE-6-60-5SP	SMA Plug	5m (17')



# 4G/5G Desk Mount MiMo Antenna

## FEATURES

- 2x2 MiMo for 4G/5G
- 617-960 / 1710-6000MHz
- Desk, window or wall mount
- Integrated twin cable with a range of connectors

The DMM antenna provides an innovative and future proof solution for 2G/3G/4G and 5G networks. Incorporating two separately fed ultra wideband elements in a single housing the DMM is equipped to provide portable MiMo and diversity support for frequencies from 617-960/1710-6000MHz.

Part no.	Termination	Cable Length
DMM-6-60-2SP	2x SMA Male	2m (6.6')
DMM-6-60-2TS9	2x TS9 Male	2m (6.6')



# 4G/5G MiMo Low Profile Antenna

## FEATURES

2x2 MiMo 4G/5G LTE Solution  
698-960 / 1710-3800MHz  
Panel or Magnetic Mount  
Cost Effective IoT Solution

The 4G/5G MiMo Low Profile Antenna range has been designed to provide MiMo LTE antenna function for IoT and M2M applications. The compact, robust low-profile housing is weatherproof and contains two antenna elements with effective isolation and correlation alongside optional GNSS.

Part no.	GPS/ LTE GNSS	Cable & Connector
LPAM-BC3G-26	2x2	1m (3') SMA Male
LPAM-BC3G-26-ISP	2x2 •	1m (3') SMA Male
LPAMM-BC3G-26-ISP*	2x2	1m (3') SMA Male
LGAMM-BC3G-26-ISP*	2x2 •	1m (3') SMA Male

\* Magnetic version

IoT

# Low Profile Magnetic Antenna

## FEATURES

Cost effective 2G/3G/4G/5G coverage  
617-960 / 1710-600MHz  
Magnetic Mount  
Low Profile Design

The Panorama LPBEM-6-60 is a range of low cost high performance magnetic mount antennas for temporary fit applications. At only 95mm (3.7") high and protected by a robust high impact radome the antenna is almost impervious to daily wear and tear.



Part no.	Termination	Cable Length
LPBEM-6-60-2SP	SMA Plug	2m (6.6')
LPBEM-6-60-5SP	SMA Plug	5m (17')

IoT



# 2G/3G/4G Easy-Fit Antenna

## FEATURES

2G/3G/4G LTE  
698-960 / 1710-2700MHz  
Discreet adhesive pad fitment  
Suitable for mounting to plastic or glass

EF-BC3G-26 is a range of highly efficient and portable antennas for 2G/3G/4G modems and datacards. These paddle style antennas are easily positioned on a device housing or vehicle windscreen using the supplied automotive industry grade adhesive pad.



Part no.	Termination
EF-BC3G-26-3FAKRAD	FAKRA D Jack
EF-BC3G-26-3SP	SMA Plug
EF-IN2309	2x TS9



# 2G/3G/4G/5G Paddle Antenna

## FEATURES

Cost Effective 2G/3G/4G/5G coverage  
617-960 / 1710-3800MHz  
Suitable for routers and terminals  
Articulated SMA connector

The PWB-BC3G-38 antenna is a ground plane independent antenna covering global 2G/3G /4G and 3.8GHz 5G frequencies from 698-960/1710-2170/2396-2700 and 3400-3800MHz.

Designed for terminals and routers the PWB-BC3G-38-RSMAP offers an articulated SMA connector for flexible positioning and a sleek profile for low visual impact.

Part no.	Termination
PWB-BC3G-38-RSMAP	SMA Connector
PWB-BC3G-38-RFDJ	FAKRA D Connector

# *PANORAMA* *ANTENNAS*

Head Office - United Kingdom  
sales@panorama-antennas.com  
+44 (0)20 8877 4444

Australia  
sales.apac@panorama-antennas.com  
+61 (08) 9314 1381

France  
fr.sales@panorama-antennas.com  
+33 554 070 436

Germany  
de.sales@panorama-antennas.com  
+49 2303 902 88 00

Singapore  
sales.sea@panorama-antennas.com  
+65 9155 4194

USA  
sales.nam@panorama-antennas.com  
+1 817-539-1888