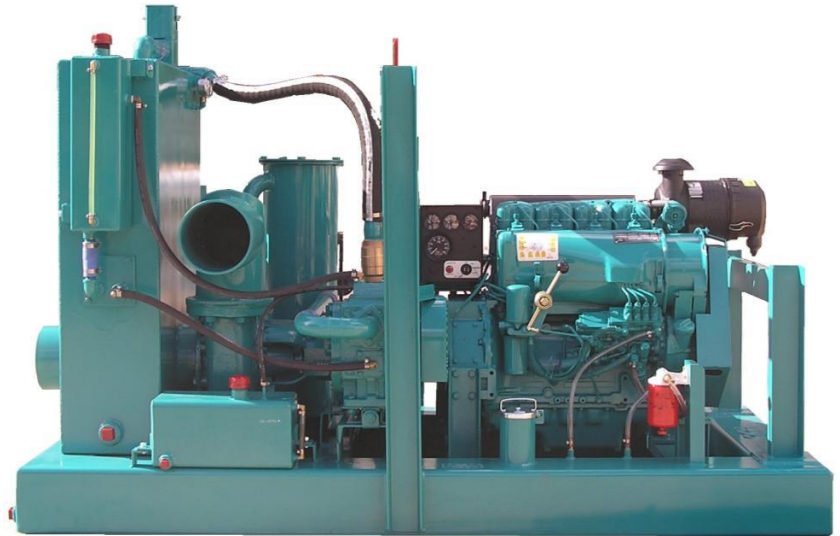


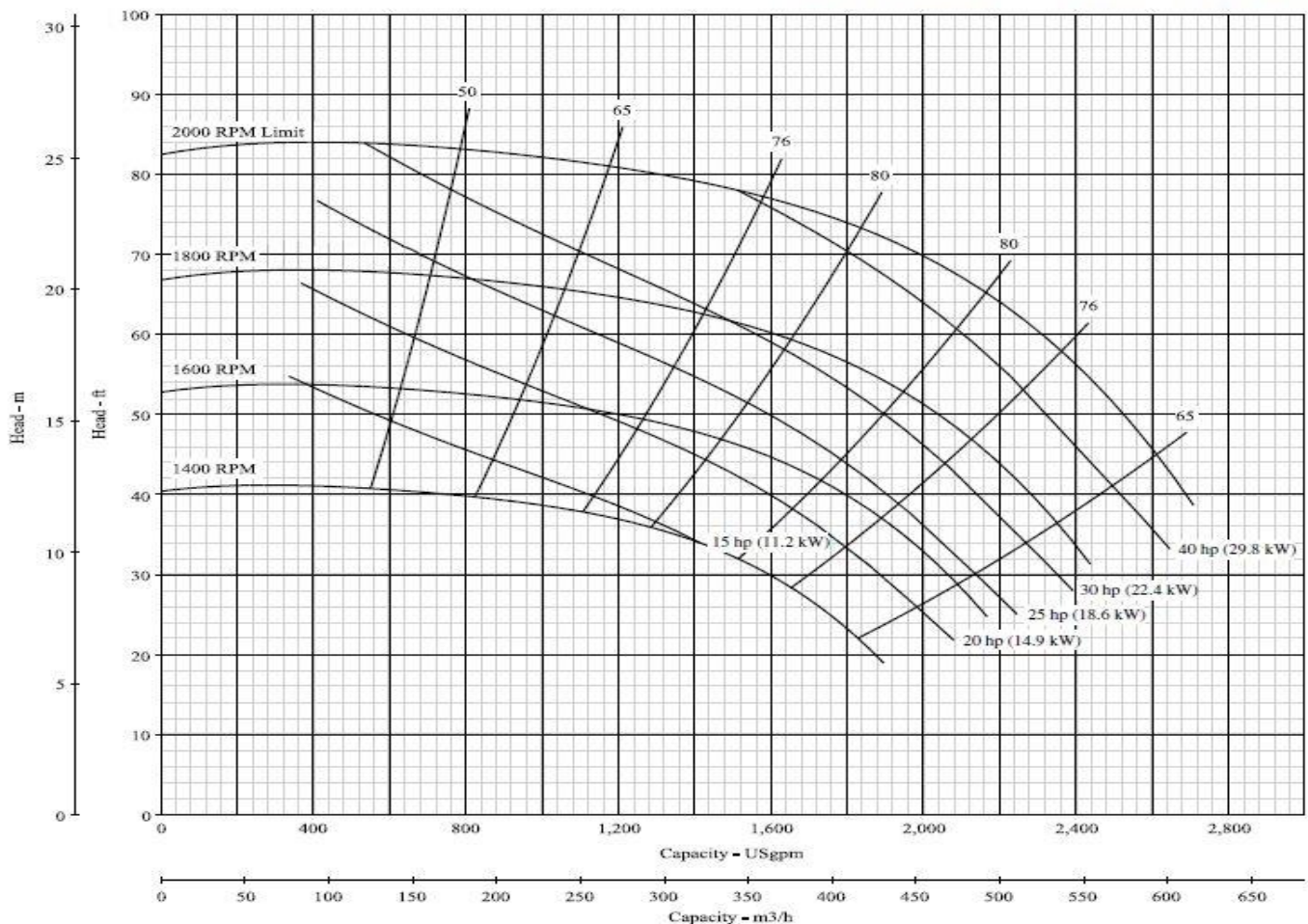
## Wellpoint Pump 8 inch discharge

The Complete AutoPrime™ Wellpoint Pump has been the industry standard for wellpoint and sock underdrain dewatering since 1923. The VAWP series integrates our unique vacuum system with high performance centrifugal pumps for maximum performance in air handling and water volume. The rotary vane vacuum system is independent of the centrifugal pump, with no cross contamination to wear on vacuum pump tolerances.



Dia. 9.00"

Nominal RPM: **VARIOUS**  
Based on Fresh Water @ 68°F (20°C)  
Maximum Working Pressure: 266 PSI (18 BAR)



“The finest dewatering pumps and wellpoint equipment since 1923”

## Complete Dewatering 8VAWP-Iz4T-C10-F(W) 8" Vacuum Assisted Wellpoint Pump

### SPECIFICATIONS

(All specifications subject to change without notice)

#### Pump Component

Make: ..... Complete Dewatering  
Model: ..... Berkeley B-series, end suction centrifugal, long coupled  
Casing: ..... Cast Iron  
Impeller: ..... Semi-open 9.00", Cast Iron  
Seal: ..... Carbon-ceramic / buna-n  
Seal lubrication: ..... Water cooled & lubricated  
Coupling: ..... Long coupled, doughnut type elastomeric element  
Suction, Discharge: ..... 8" x 8" nominal straight pipe, cam-lock or Bauer fittings optional

#### Performance:

Pumping Capacity: ..... to 2700 gpm (10220 l/m)  
Head Capacity: ..... to 84' (25.6 m)  
Suction Lift: ..... to 24' (7.3 m)  
Solids Capacity: ..... to 1-1/8" spherical (2.85 cm)

#### Diesel Engine

Make / Model: ..... Isuzu 4LE2X turbocharged  
John Deere/Hatz/Kohler/Yanmar also available  
Emissions: ..... EPA Final Tier 4  
Type: ..... 4-cylinder liquid cooled diesel  
Horsepower: ..... 58hp continuous at 2000 rpm  
Control Panel: ..... Murphy digital control panel with engine rpm, oil pressure, coolant temperature, voltage, hour meter, and electronic throttle control; safety shutdowns on critical engine conditions.  
Fuel Filters: ..... Dual fuel filter system with fuel/water separator

#### Vacuum System

Vacuum Pump: ..... Complete C10W-OF rotary vane, water cooled, oil lubricated  
Air Handling: ..... 200 cfm  
(alternate; dual C5 vacuum pumps 260 cfm)  
Lubrication: ..... Single point oiler w/ closed loop vacuum pump oil recovery system  
Cooling: ..... Liquid and oil cooled; vacuum pump is water cooled, vacuum oil is also cooled via a closed loop oil recovery system w/ heat exchanger  
Oil capacity: ..... 20 quarts, SAE 30 non-detergent  
Vacuum system: ..... Suction priming constant vacuum system with a large steel air/water separation tank, stainless steel peeler valve float mechanism, manifold trap moisture capture system, vacuum oil recovery tank w/ stainless steel vacuum oil demist element.

#### Frame

Type: ..... Integral fuel cell / frame, welded steel construction  
Material: ..... 8" x 1/4" steel box tube, welded and pressure tested  
Fuel Capacity: ..... 62 gallons (235 liters); approx. 18-24 hours run time between refueling. Can also be used with an auxiliary fuel tank.  
Clean out ports: ..... (4), one on each corner  
Fuel Gauge: ..... Mechanical dial  
Fuel filler: ..... 4" filler neck with lockable cap, sediment screen  
Battery hold-down: ..... External, lockable bar  
Lifting bale: ..... Single point, balanced  
Paint: ..... Epoxy primed and painted with an industrial grade enamel. Custom colors are available.

#### Wheel Mount Option

Axle: ..... Single axle, 6000# rated Torflex torsion axle.  
Tires: ..... 225/75/R15, Highway rated, load range D  
Fenders: ..... Steel diamond plate  
Tow Hitch: ..... To match your towing vehicle (ball, pintel, lunette eye) with safety chains  
Leveling: ..... Drop down posts on all corners of the pump, front wind-down jack stand  
Brakes (optional): ..... Hydraulic surge or electric with battery backup and charger

#### Dimensions

Frame Mount: ..... Length 8.8' (105", 267 cm)  
Width 4.2' (50", 127 cm)  
Height 5.9' (70", 178 cm)  
Weight 3600 lbs. (1640 kg)  
Wheel Mount: ..... Length 12.7' (152", 386 cm)  
Width 6.7' (80", 204 cm)  
Height 6.5' (78", 198 cm)  
Weight 4200 lbs. (1910 kg)

#### Options

Increased fuel capacity  
Vacuum pump upgrade  
"Whisper Pack" full or partial enclosures

#### Warranty

CDPW Inc. warrants the entire unit for one year parts and labor against defects in product or workmanship. Engine warranties are carried by the manufacturer and may exceed one year.

