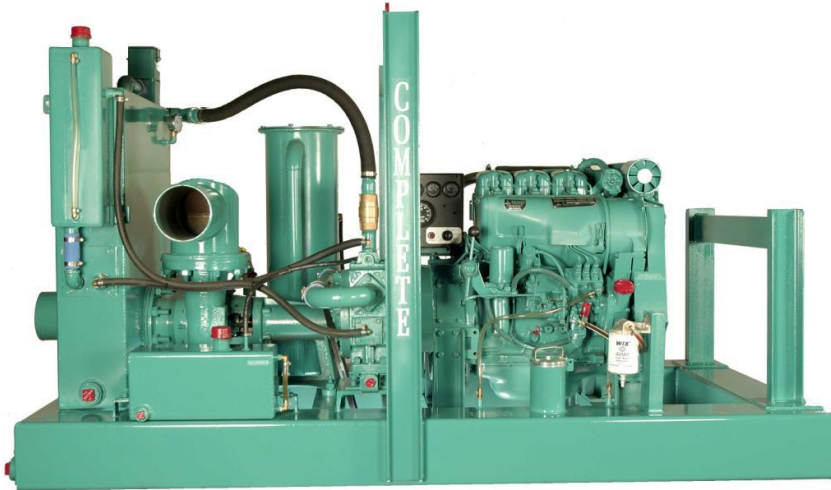


Wellpoint Pump 6 inch discharge

The Complete 6" AutoPrime™ Wellpoint Pump has been the industry standard for wellpoint and sock underdrain dewatering since 1923. Our MOST Popular Pump model: 6VAWP-1z4T-C5-F



The ideal pump for small dewatering projects:

- Wellpoint systems
- Sock underdrain
- Utility line connections
- Tank installations
- Swimming pool installations

Diesel Configuration:

Model 6VAWP-1z4T-C5-F(W)

Isuzu 4LE2T EPA Tier 4 Final liquid cooled turbo diesel engine, 43 cont. hp @ 2000 rpm
Full instrument panel with safety shutdowns

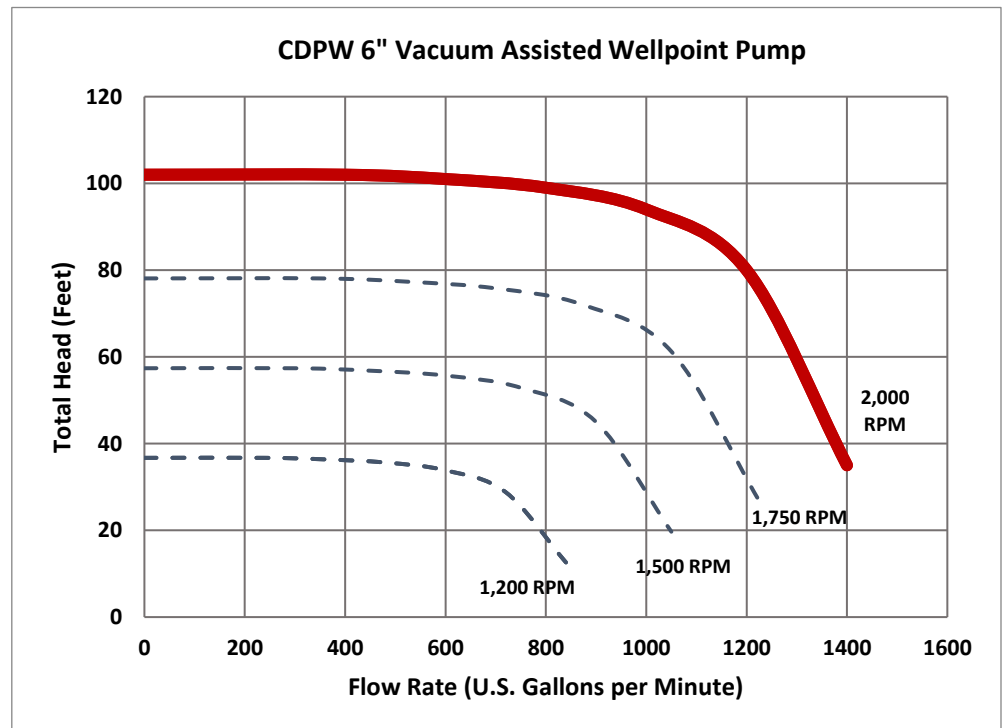
Electric Configuration:

Model 6VAWP-E40-C5-F(W)

40 HP, 1800 rpm, 460 volt, 3 phase TEFC motor
46.5 Full Load Amps @ 460 volts, 1.15 SF
NEMA control panel with external disconnect, fuse block, magnetic contactor, adjustable overload

Specifications:

- 1400 GPM cast iron centrifugal pump
- 6" suction & discharge
- up to 24' suction lift
- C5 vacuum pump, 130 cfm air handling
- Closed loop vacuum oil recovery system with heat exchanger
- Air/water separation tank with peeler valve assembly
- Integral fuel tank / frame, 65-gallon
- Single point lifting bale
- Optional wheel mount, DOT lights & fenders



"The finest dewatering pumps and wellpoint equipment since 1923"

Complete Dewatering 6VAWP-Iz4T-C5-F(W)

6" Vacuum Assisted Wellpoint Pump

SPECIFICATIONS

(All specifications subject to change without notice)

Pump Component

Make: Complete Dewatering
Model: CW6, 6" end suction centrifugal
Casing: Cast Iron
Impeller: Semi-open 8.88", 6-vane, bronze
Seal: Double sintered bronze / steel
Seal Lubrication: Grease cup lubricated, run-dry
Coupling: Long coupled, doughnut type elastomeric element
Suction, Discharge: 6" x 6" nominal straight pipe, cam-lock or Bauer fittings optional

Performance:

Pumping Capacity: to 1400 gpm (5300 l/m)
Head Capacity: to 102' (31.1 m)
Suction Lift: to 24' (7.3 m)
Solids Capacity: to 1-1/8" spherical (2.85 cm)

Diesel Engine

Make / Model: Isuzu 4LE2T turbo diesel
John Deere/Hatz/Kohler/Yanmar also available
Emissions: EPA Tier 4 Final
Type: 4-cylinder liquid cooled diesel
Horsepower: 43hp continuous at 2000 rpm
Fuel Consumption: approx. 2.3 gph at full load
Control Panel: Murphy digital control panel with engine rpm, oil pressure, coolant temperature, voltage, hour meter, and electronic throttle control; safety shutdowns on critical engine conditions.
Fuel Filters: Dual fuel filter system with fuel/water separator

Vacuum System

Vacuum Pump: Complete C5W-OF rotary vane
Air Handling: 130 cfm
(alternate; C10 vacuum pump 200 cfm)
Lubrication: 8 gallons, SAE 30 non-detergent
Cooling: Vacuum pump is liquid cooled; vacuum oil is cooled using a closed loop oil recovery system with heat exchanger
Vacuum System: Constant vacuum suction priming system with a large steel air/water separation tank, peeler valve float mechanism, manifold trap moisture capture, and vacuum oil recovery tank with demist element

Frame

Type: Integral fuel cell / frame
Material: 8" x 1/4" steel box tube, welded and pressure tested
Fuel Capacity: 64 gallons (243 liters); approx. 27 hours run time between refueling. Can also be used with an auxiliary fuel tank.
Cleanout Ports: (4), one on each corner
Fuel Gauge: Mechanical dial
Fuel Filler: 4" filler neck with lockable cap, sediment screen
Battery Hold-down: External, lockable bar
Lifting Bale: Single point, balanced
Paint: Epoxy primed and painted with an industrial grade enamel. Custom colors are available.

Wheel Mount Option

Axle: Single axle, 6000# rated Torflex torsion axle.
Tires: 225/75/R15, Highway rated, load range D
Fenders: Steel bolt on replaceable
Tow Hitch: To match your towing vehicle (ball, pintle, lunette eye) with safety chains
Leveling: Drop down posts on all corners of the pump, front wind-down jack stand
Brakes (optional): Hydraulic surge or electric with battery backup and charger

Dimensions

Frame Mount: Length 9.2' (110", 280 cm)
Width 4.2' (50", 127 cm)
Height 5.9' (70", 178 cm)
Weight 3200 lbs. (1450 kg)
Wheel Mount: Length 13.2' (158", 401 cm)
Width 6.7' (80", 204 cm)
Height 6.5' (78", 198 cm)
Weight 3800 lbs. (1730 kg)

Options

Increased fuel capacity
Vacuum pump upgrade
"Whisper Pack" full or partial enclosures

Warranty

CDPW Inc. warrants the entire unit for one-year parts and labor against defects in product or workmanship. Engine warranties are carried by the manufacturer and may exceed one year.

