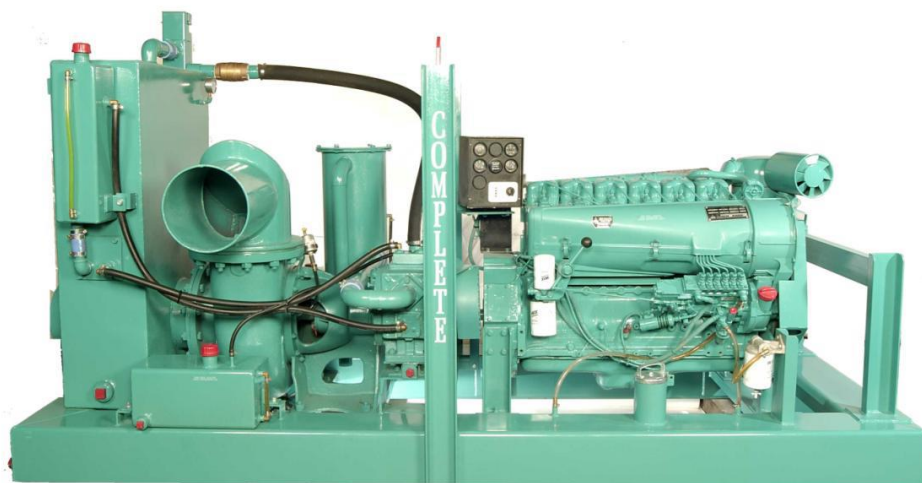


## Wellpoint Pump 10 inch discharge



The ideal pump for LARGE dewatering projects:

- Building excavations
- Long utility runs
- Wellpoint systems
- Sock underdrain

### Diesel Configuration:

#### Model 10VAWP-Dz4T-C10-F(W)

Deutz TCD3.6 EPA Tier 4 Final liquid cooled turbo diesel engine, 80 cont. hp @ 1800 rpm  
Full instrument panel with safety shutdowns

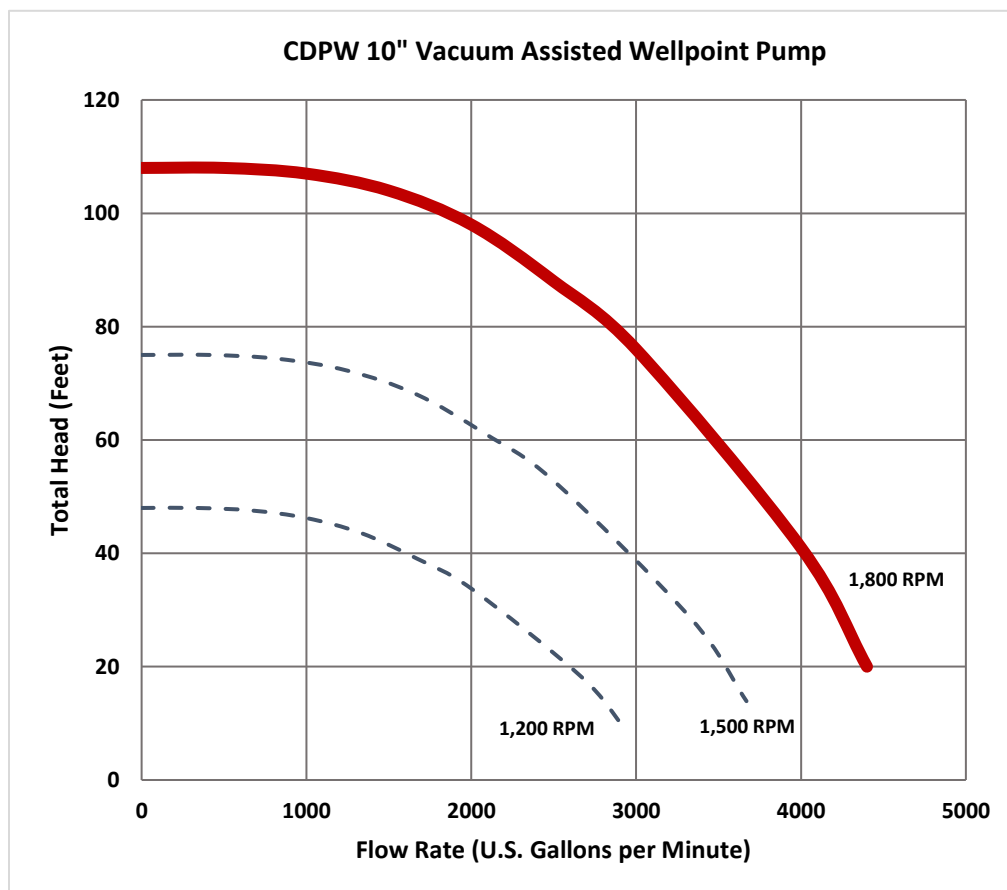
### Electric Configuration:

#### Model 10VAWP-E75-C10-F(W)

75 HP, 1800 rpm, 460 volt, 3 phase TEFC motor  
96 FL Amps @ 460 volts, 1.15 SF  
NEMA control panel with external disconnect, fuse block, magnetic contactor, adjustable overload

### Specifications:

- 4400 GPM cast iron centrifugal pump
- 10" Suction x 10" Discharge
- up to 24' suction lift
- C10 vacuum pump, 200 cfm air handling
- Closed loop vacuum oil recovery system with heat exchanger
- Air/water separation tank with peeler valve assembly
- Integral fuel tank / frame, 114-gallons
- Single point lifting bale
- Optional: wheel mount with highway lights, fenders



**“The finest dewatering pumps and wellpoint equipment since 1923”**

## Complete Dewatering 10VAWP-Dz4T-C10-F(W)

### 10" Vacuum Assisted Wellpoint Pump

#### SPECIFICATIONS

(All specifications subject to change without notice)

#### Pump Component

Make: ..... Complete Dewatering  
Model: ..... CW10, 10" end suction  
centrifugal, long coupled  
Casing: ..... Cast Iron  
Impeller: ..... Enclosed 11.3", 4-vane, bronze  
Seal: ..... Double sintered bronze / steel  
Seal Lubrication: ..... Grease cup lubricated, run-dry  
Coupling: ..... Long coupled, doughnut type  
elastomeric element  
Suction, Discharge: ..... 10" x 10" nominal straight pipe,  
cam-lock or Bauer fittings optional

#### Performance:

Pumping Capacity: ..... to 4400 gpm (16650 l/m)  
Head Capacity: ..... to 108' (32.9 m)  
Suction Lift: ..... to 24' (7.3 m)  
Solids Capacity: ..... to 1-1/2" spherical (3.8 cm)

#### Diesel Engine

Make / Model: ..... Deutz TCD3.6L4 turbo diesel  
Isuzu/John Deere/Kohler also available  
Emissions: ..... EPA Tier 4 Final  
Type: ..... 4-cylinder liquid cooled diesel  
Horsepower: ..... 80 hp continuous at 1800 rpm  
Fuel Consumption: ..... approx. 4.1 gph at full load  
Control Panel: ..... Murphy digital control panel with  
engine rpm, oil pressure, coolant temperature,  
voltage, hour meter, and electronic throttle control;  
safety shutdowns on critical engine conditions  
Fuel Filters: ..... Dual fuel filter system with  
fuel/water separator

#### Vacuum System

Vacuum Pump: ..... Complete C10W-OF rotary vane  
Air Handling: ..... 200 cfm  
(alternate; dual C5 vacuum pumps 260 cfm)  
Lubrication: ..... 12 gallons, SAE 30 non-detergent  
Cooling: ..... Vacuum pump is liquid cooled;  
vacuum oil is cooled using a closed loop oil recovery  
system with heat exchanger  
Vacuum System: ..... Constant vacuum suction priming  
system with a large steel air/water separation tank,  
peeler valve float mechanism, manifold trap  
moisture capture, and vacuum oil recovery tank  
with demist element

#### Frame

Type: ..... Integral fuel cell / frame,  
welded steel construction  
Material: ..... 10" x 1/4" steel box tube,  
welded and pressure tested  
Fuel Capacity: ..... 114 gallons (431 liters);  
approx. 28 hours run time between refueling.  
Can also be used with an auxiliary fuel tank.  
Cleanout Ports: ..... (4), one on each corner  
Fuel Gauge: ..... Mechanical dial  
Fuel Filler: ..... 4" filler neck with lockable  
cap, sediment screen  
Battery Hold-down: ..... External, lockable bar  
Lifting Bale: ..... Single point, balanced  
Paint: ..... Epoxy primed and painted  
with an industrial grade enamel. Custom colors  
available

#### Wheel Mount Option

(includes DOT compliant Certificate of Origin)  
Axle: ..... Dual axle, 7000# rated  
Torflex torsion axle.  
Tires: ..... 225/75/R15, Highway rated,  
load range D  
Fenders: ..... Steel bolt on replaceable  
Tow Hitch: ..... To match your towing vehicle  
(ball, pintle, lunette eye) with safety chains  
Leveling: ..... Three wind-down jacks - one  
front tongue; two at rear corners  
Brakes: ..... Electric with battery backup

#### Dimensions

Frame Mount: ..... Length 10.5' (126", 320 cm)  
Width 4.2' (50", 127 cm)  
Height 5.9' (70", 178 cm)  
Weight 5000 lbs. (2275 kg)  
Wheel Mount: ..... Length 15.0' (180", 457 cm)  
Width 6.7' (80", 204 cm)  
Height 6.5' (78", 198 cm)  
Weight 6200 lbs. (2820 kg)

#### Options

Increased fuel capacity  
Vacuum pump upgrade  
Remote monitoring & control  
"Whisper Pack" full or partial enclosures

#### Warranty

CDPW Inc. warrants the entire unit for one-year parts and  
labor against defects in product or workmanship. Engine  
warranties are carried by the manufacturer and may exceed  
one year.

