



Section: 40-51
1 June 2021

© Copyright by Holland Pump Company 2021



Vacuum Assisted Suction Pump - Special
Model PT6X6TMS- D3.6L4-T
Size 8" Trash Pump
138' Shut-off Head

Holland® Pump Company
Corporate Office: 7312 Westport Pice
West Palm Beach, Florida 33413
United States of America
Phone 561-697-3333
1-800-451-0769

PUMP SPECIFICATIONS

Wetend: 8NNDH Redi Prime- T **Volute:** Cast iron ASTM A48 class 30

Impeller: Enclosed -Delta 13.5" diameter, Handles 3.38" diameter solids

PRIME³ Priming System: Automatic priming system that features a 50 cfm water tolerant, diaphragm vacuum pump driven by the main drive shaft. Our major competitors use a 15 cfm compressor pump with a small compressor venturi that can easily clog. The air/water separator is a simple, reliable float that opens and closes a rubber plunger as water rises and falls. A non return valve isolates the pump during priming and protects against back flow

Wear Rings: Replaceable. (Double wear rings available)

Seal: Cornell's patented Cycloseal® design with Run-Dry oil lubrication system. John Crane T-2 single mechanical seal with Viton® elastomers, stainless steel hardware and tungsten- vs. silicon carbide seal faces for abrasion resistance

Check Valve: Valmatic or Equal

Shaft Sleeve: Heat treated 416 stainless steel

Bearings: Heavy duty, grease lubricated, deep groove ball bearings, with a minimum of 50,000 hours bearing life

Hardware: Stainless steel float linkage. A positive seating vacuum priming valve prevents water carry-over to the vacuum, pump or atmosphere

Performance: Primes to depths of 25 feet below the center line of the pump in 1 minute

Flanges: 6" suction, 6" discharge

Output (GPM)

Performance Evaluation:

Flow	Speed	Head	Efficiency	Power	NPSHr
US gpm	rpm	ft	%	hp	ft
2880	1650	41.2	46	64.9	20.9
2400	1650	63.7	57	66.5	17.4
1920	1650	83	60	66.4	13.4
1440	1650	98.4	55	63.6	10.2
960	1650	112	44	61.5	8.6

ENGINE SPECIFICATIONS

Model: Deutz 3.6L4 HT or Equal

Type: 4 Cylinder, 4 Stroke, Liquid Cooled, DIVERT Oxidation Catalyst, DPF, Turbocharged Diesel Engine - Super Series

Displacement: 3.6L+ Enviro-Chip (276 cu.in.)

Governor: Electronic

Lubrications: Forced Circulation

Air Cleaner: Dry Type with Replaceable Element

Lube Oil Capacity: 3.5 U.S. Quarts

Coolant Capacity: 5 U.S. Gallons

Fuel Tank: Minimum 75 U.S. Gallon Capacity (#2 Diesel Fuel)

Full Load Operating Time: 40 Hours @ 2000 PSI

Starter: 12 Volt, 2.0 kW

Standard Features: Cast Iron Engine Block, Flywheel and Flywheel Housing, Ecoplus Oil and Fuel Filters, Glow Plug Starting Aid, Integral Inlet and Manifold, Gear Driven Coolant Pump, Cast Iron Exhaust Manifold with Center Side Outlet, Standard Instrument Panel: Engine Temperature and Low Oil Pressure with optional Gauge, Key Start, and Hour Meter DOT Trailer, ELeetric brakes

Optional Features: Automatic Remote Start and Stop, NEMA 4 Instrument Package Covering: Air Filter, Fuel Filter, Engine Temperature, Fuel Level, Engine Oil Pressure, Hour Meter, Amp Meter

Coupling: SAE 4 Bell housing adapter, Stromag or equal coupling

Deutz Published Performance:

Maximum Continuous Power: 74 BHP+ (55.4kW) @ 2300 RPM

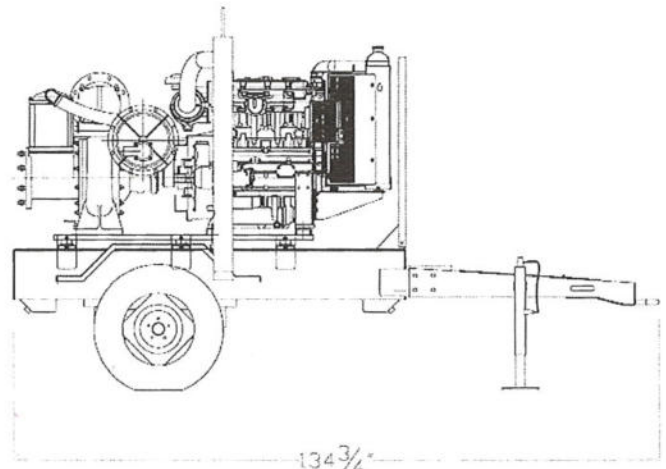
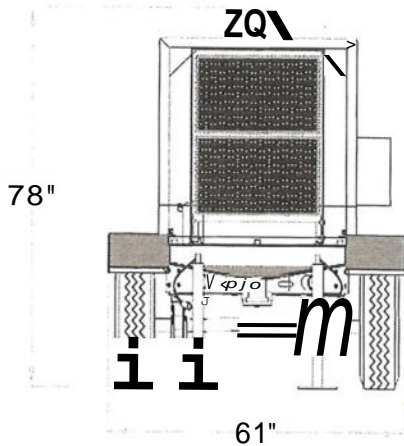
Specifications subject to change without notice

Vacuum Assisted Suction Pump
Model PT6X6TMS- D3.6L4
Size 8" Trash Pump
138' Shut-off Head

Holland® Pump Company
Corporate Office: 7312 Westport Pice
West Palm Beach, Florida 33413
United States of America
Phone 561-697-3333
1-800-451-0769

Approximate Dimensions
Powered by Duetz 3.6L4 HT or Equal

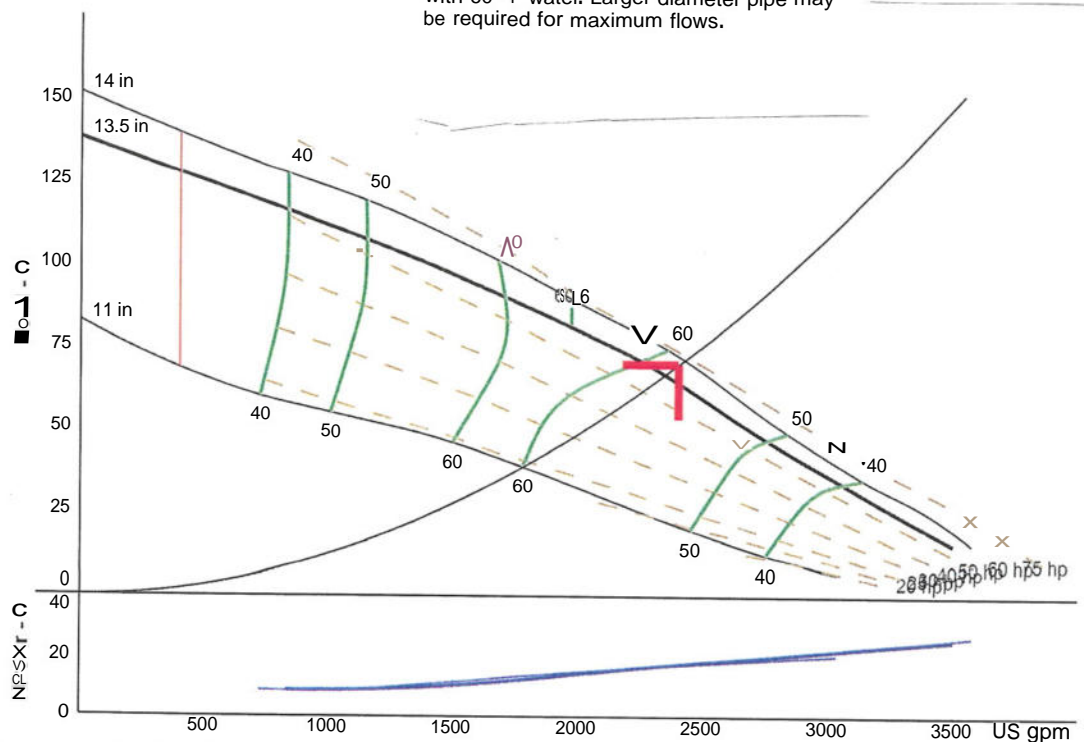
	Skid Base	DOT Trailer
Net Weight (lbs)	3410	4010
Shipping Weight (lbs)	3560	N/A
Export Crate Size (cu. ft)	2450	N/A



Performance Curve Model: PT6X6TMS- D3.6L4
Size: 8" Trash, Materials, Sludge Pump

Data shown in table and curve is based on approximate pump performance at sea level with 60° F water. Larger diameter pipe may be required for maximum flows.

— Duty Point —	
Flow:	2341 US gpm
Head:	66.6 ft
Eff:	58.2%
Power:	66.8 hp
NPSHr:	17 ft
Speed:	1650 rpm
— Design Curve —	
Shutoff Head:	138 ft
Shutoff dP:	60 psi
Min Flow:	400 US gpm
BEP:	60.6% @ 1970 US gpm
NOL Power:	
	67.2 hp @ 2252 US gpm
— Max Curve —	
Max Power:	
	73.9 hp @ 2361 US gpm



Min flow line represents the absolute lowest flow pump can operate. Consult with factory if operating below