

## LN50

### All-Terrain Litter Vacuum with Hydraulic Arm



**LN50 product video:** <https://www.youtube.com/watch?v=FgHM3U-RbGA>

**Madvac website:** [www.madvac.com](http://www.madvac.com)



Part No.	Description	
<b>LN50</b>	<b>LN50 All-Terrain Litter Vacuum with Hydraulic Arm</b> Includes the following standard features: <ul style="list-style-type: none"> <li>* Two convex mirrors mounted on vacuum arm</li> <li>* Fully street legal lighting package including SMV emblem</li> <li>* Strobe amber beacon</li> <li>* Exhaust bag dust control system</li> <li>* Operator head protection cushion (headrest)</li> <li>* Silent pack (for extra sound proofing)</li> <li>* Emergency stop button</li> </ul>	
K14008	48 in. (1219 mm) vacuum head, hydraulic raise/lower with dual vac port	
K11937	Retractable wander hose 6 in. (152 mm) X 15 ft. (4.5 m)	
K11823	Broom and rake holder	
63271	Litter collector bags (100 bags)	
K12198	Bagless debris system (kevlar bin instead of litter collector bags)	
K15293	Water mist system with 10.17 gal. (38.5 L) water tank (for additional dust control)	
K12106	Overhead sunshield roof	
K15280	Heated seat	
K19519	3-way floor-mounted heater (keeps operator's feet warm)	
K13846	Foot activated horn (instead of pressing steering wheel turn signal lever)	
K13212	Front strobe light	
K9600	Tire flatproofing - liquid sealant (all wheels)	
K12228	Fire extinguisher 2.2 lb (1 kg. dry powder)	



Sourcewell 

Awarded Contract



All-Terrain Litter Vacuum

**LN50**

**Product  
Overview**

http://



**www.madvac.com**

follow us



February 2021



**LN50 options**

Heated seat .....	9
Front strobe light .....	19
Vacuum head .....	27
Wander hose.....	28
Litter collector bags.....	30
Bagless debris system .....	31
Water mist system .....	33
Fire extinguisher .....	34
Floor-mounted heater .....	36
Foot activated horn .....	37
Tire flatproofing .....	38
Broom and rake holder .....	38

# Table of Contents

Applications & Customers.....	3-4
-------------------------------	-----

Specs, Characteristics & Performance.....	5-21
---	------

Vacuum System.....	22-28
--------------------	-------

Litter Collection System.....	29-33
-------------------------------	-------

Safety, Comfort & Convenience.....	34-43
------------------------------------	-------

Contact Us.....	44
-----------------	----





# Application

From concrete to grass, the LN50 can tackle all types of urban terrain with ease.

- Parks and grass areas
- Sidewalks
- Bike and pedestrian lanes
- Parking lots
- Curb side
- Alleys
- Pathways
- Alongside buildings





# Customers

- Cities & municipalities
- Outdoor cleaning contractors
- Airports & seaports
- Transit authorities
- Healthcare services
- Distribution centers
- Shopping malls
- Educational & sports facilities
- Manufacturing facilities
- Amusement parks
- Casinos
- Military
- Correctional facilities



# Dimensions

*Designed for narrow and hard-to-reach areas such as sidewalks and alleys*

Height:  
92 in.  
(2337 mm)

113 in. (2870 mm)

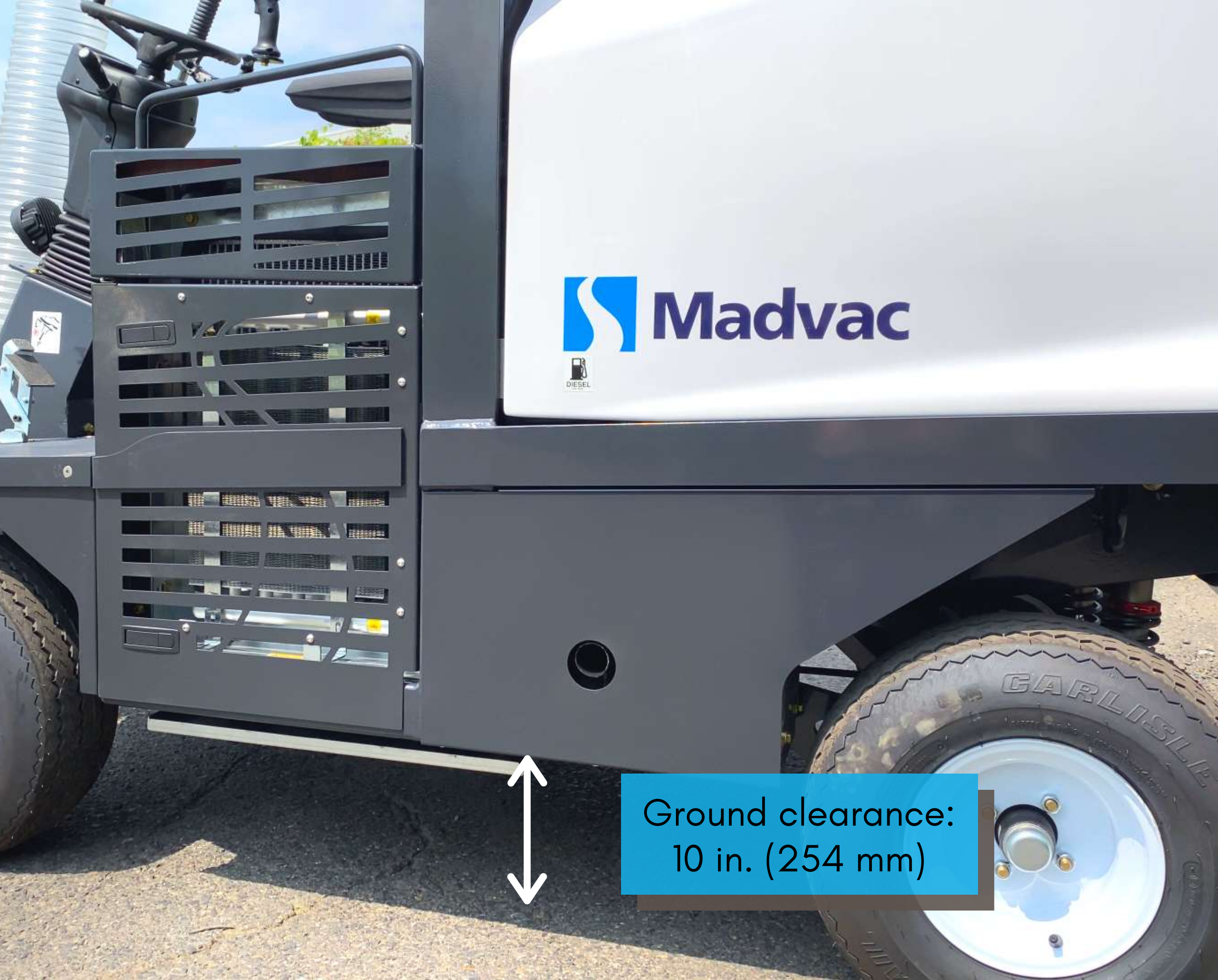
Wheelbase: 63 in. (1600 mm)

Length: 96 in. (2438 mm)

Width: 48 in. (1219 mm)







Ground clearance:  
10 in. (254 mm)

---

# Ground Clearance & Curb Climbing

Curb climbing: 7  
in. (178 mm) tall

---



# Weight

- Net/dry weight: 2633 lbs (1194 kg)
- Gross vehicle weight rating: 3600 lbs (1633 kg)
- Axle weight rating:  
front 1402 lbs (636 kg);  
rear 5423 lbs (2460 kg)







*Reliable, Robust, Long-lasting*



## Frame/Body

- Heavy gauge steel body on a welded 0.25 in. (6.35 mm) structural steel frame
- Electrostatic powder-coated paint



# Cabin



Spacious cabin: 68 cu. ft. (1.93 cu. m.)

Seating: 42.5 in. (1079 mm) above ground



High seating for greater visibility & safety

Armrest, headrest, and optional heated seat for operator comfort

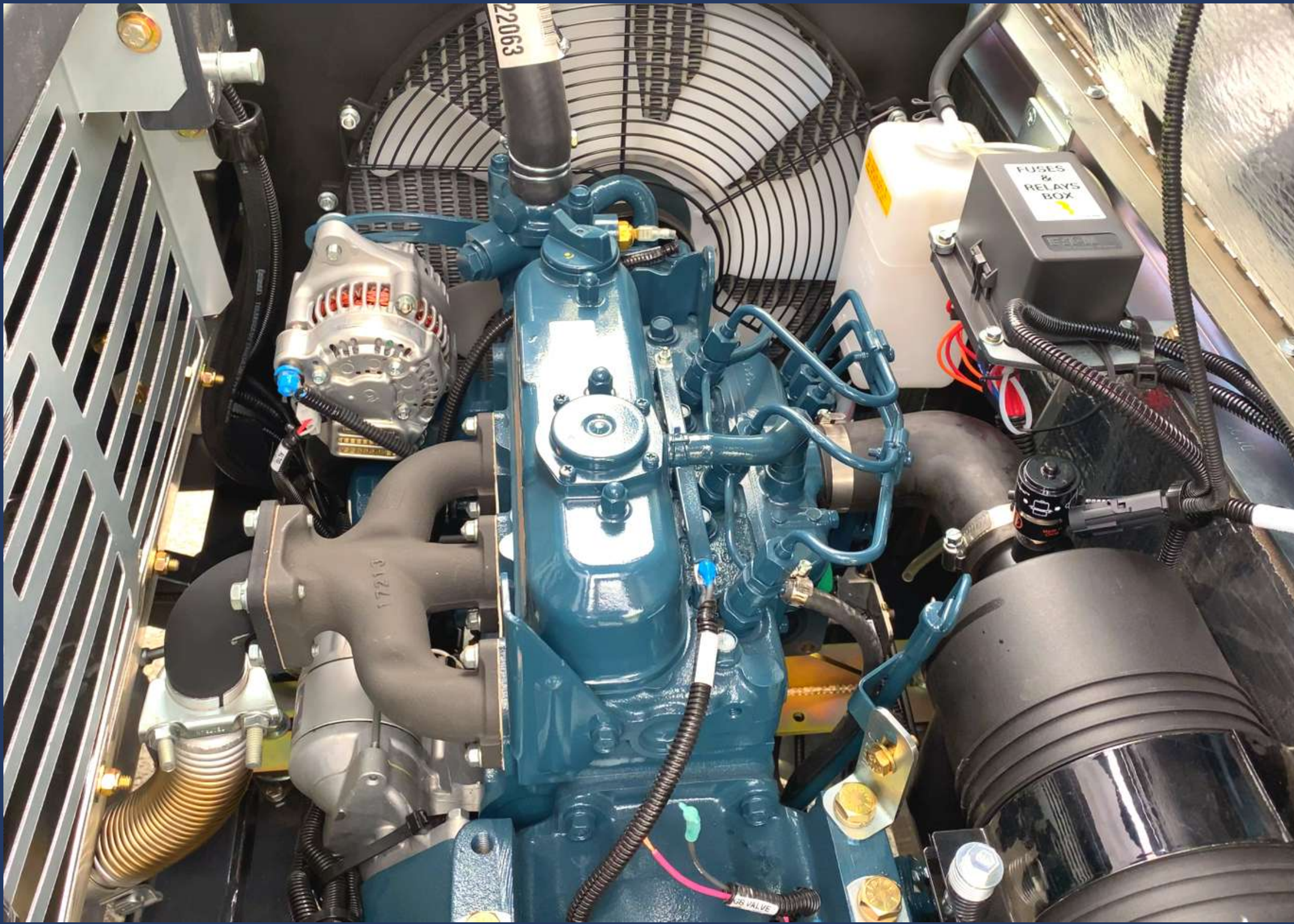


# Sunshield Rooftop

Sunshield helps  
operator stay cool







# Engine

- Model: Kubota Diesel D1105-E3B (EPA Tier 4 Final)
- Engine power: 24.8 hp (18.5 kw) @ 3000 rpm
- Displacement: 68.53 cu.in. (1123 cc)
- Air cleaner: 2-stage Donaldson with restriction indicator



# General Machine Performance

- Max. forward speed: 12 mph (19 km/h)
- Max. reverse speed: 5 mph (8 km/h)
- Min. isle turn: 180 in. (4572 mm)
- Internal turning radius: 25 in. (635 mm)
- Gradeability: 11.3 deg. (20%) with full & empty hopper





# Instrument Panel



- Turn signal/horn/beacon/work light switch and lever
- Fuel gauge
- Operator presence indicator
- Parking brake indicator
- Left signal indicator
- Right signal indicator
- Engine oil pressure indicator
- Alternator indicator
- Engine temperature light
- Hourmeter
- Glow plug indicator
- Hazard light switch



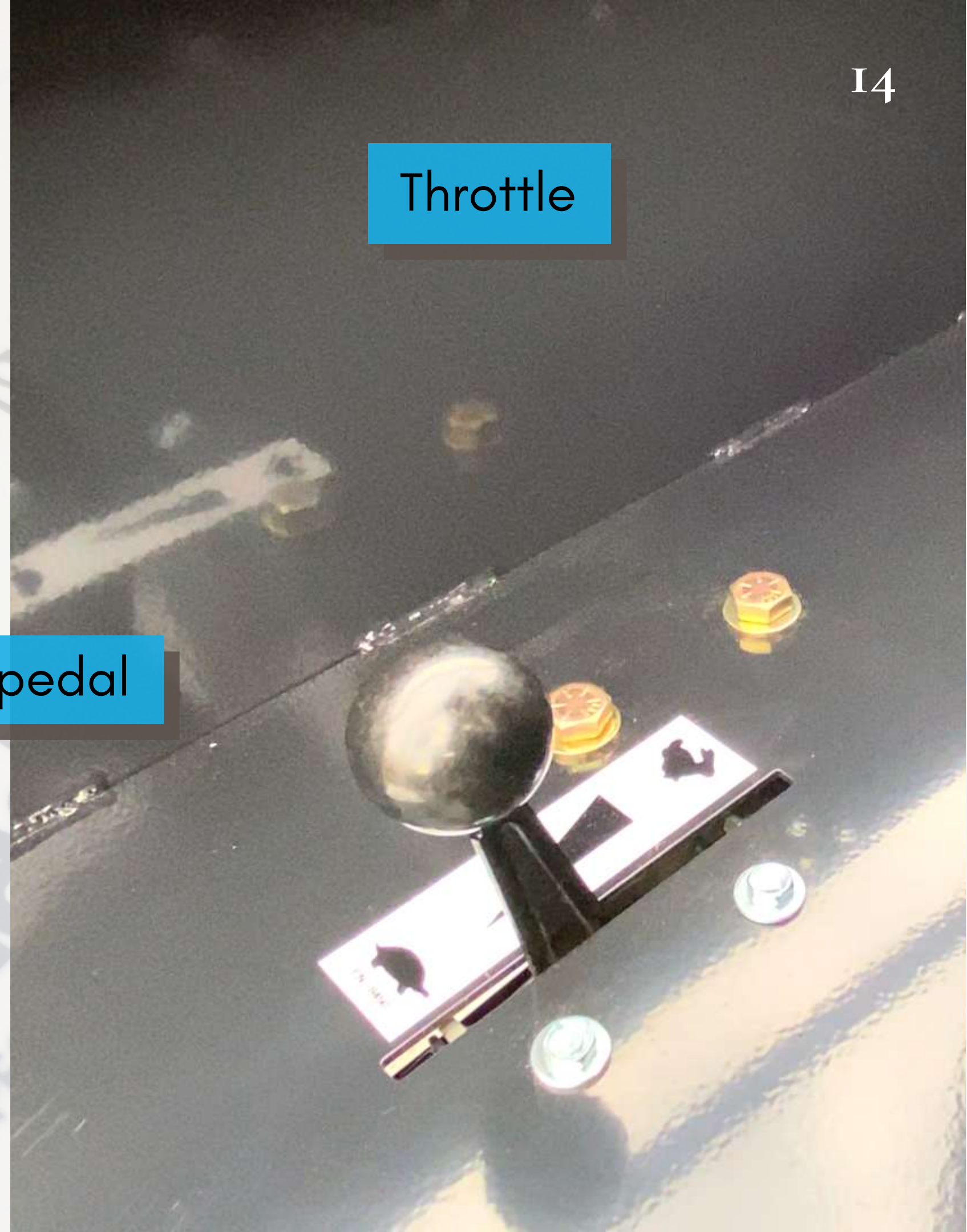
Steering: automotive type, power assisted  
Motion control: heavy-duty hydrostatic

Throttle



Single traction pedal

*Easy to operate: no CDL required*





## *Safer & more comfortable operation*

# Traction

- Front wheel drive
- Brakes: front hydrostatic brake; rear mechanical disc parking brake
- Tires (all 4 wheels):  
regular: 20.5 in. (521 mm); turf: 20 in. (508 mm)







# Suspension

- *Front: multi-layer transverse, beam axle leaf springs with torsion bars*
- *Rear: heavy-duty shocks and spring*

*More comfort, better traction  
and a safer ride*





## dB Rating

- Cabin: 90 dB
- 5 feet away: 91 dB
- 10 feet away: 87 dB
- 20 feet away: 82 dB



# Lighting

## *Complete road lighting and signaling package*



- Strobe beacon
- LED headlight
- LED turn signals
- LED brake lights
- LED flashers
- LED backup lights
- Back up alarm
- License plate holder with light
- SMV emblem





# Front Strobe Light

Optional front strobe offers additional lighting and safety



*Can easily do an 8-hour shift*

# Fuel Tank

Capacity: 10.2 gal. (39 L)





Capacity: 12.5 gal. (48 L)

# Hydraulic Oil Tank

*Easily accessible with level indicator*







Vacuum rating: 2200 CFM

Vacuum fan position: bottom mounted

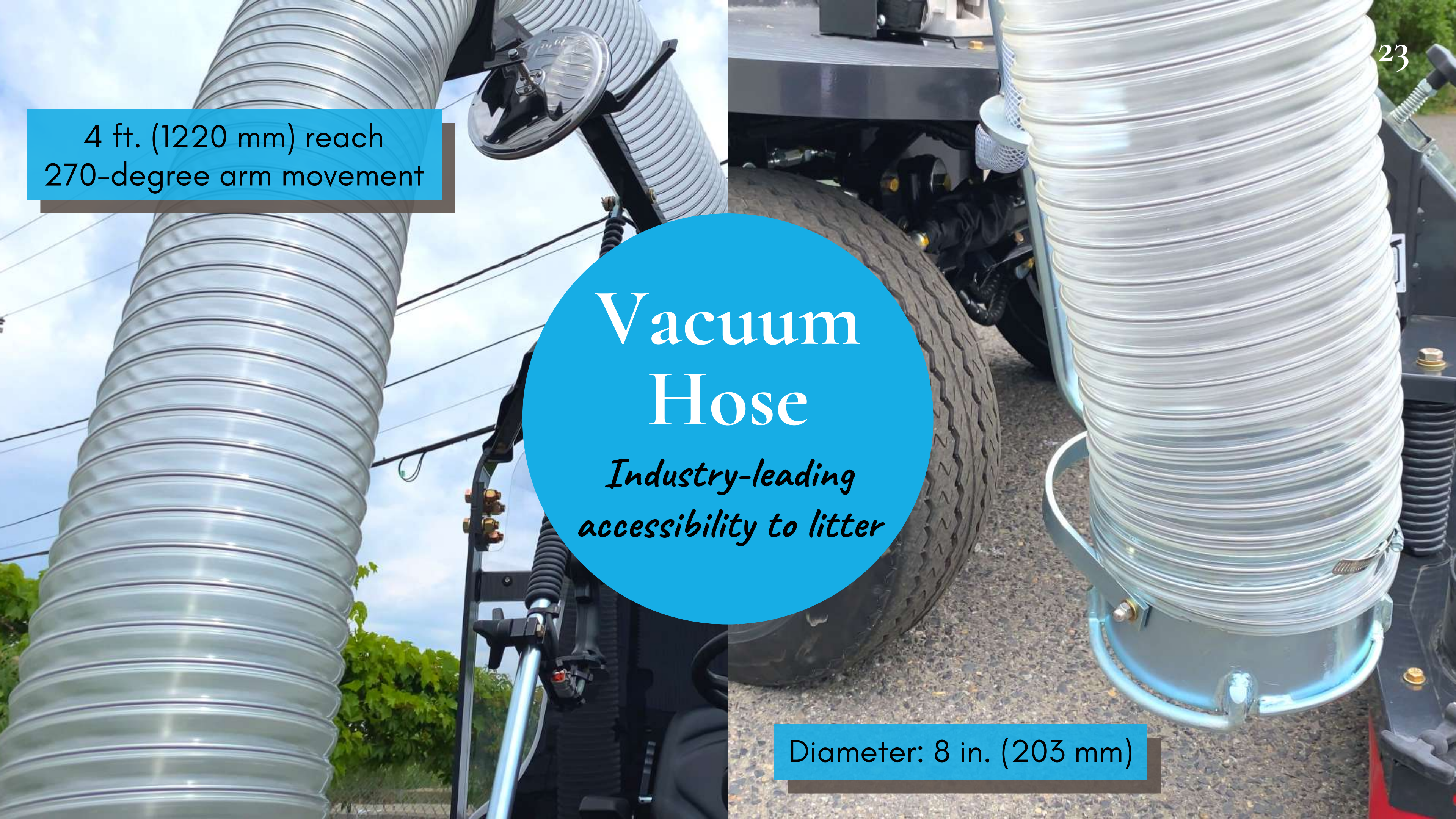
## Vacuum Fan & Suction System

- Straight-through suction system compacts litter 2:1 ratio
- No litter comes in contact with the fan



Vacuum fan diameter: 14 in. (365 mm)





4 ft. (1220 mm) reach  
270-degree arm movement

# Vacuum Hose

*Industry-leading  
accessibility to litter*

Diameter: 8 in. (203 mm)





For operator safety

## Vacuum Hose Support Arm

*Eliminates potential  
for workers'  
compensation claims*



# Convex Mirrors: vacuum arm mounted

Offers 340-degree visibility





# Vacuum Arm Handle

Two-position controls for effortless use (patented power assist)

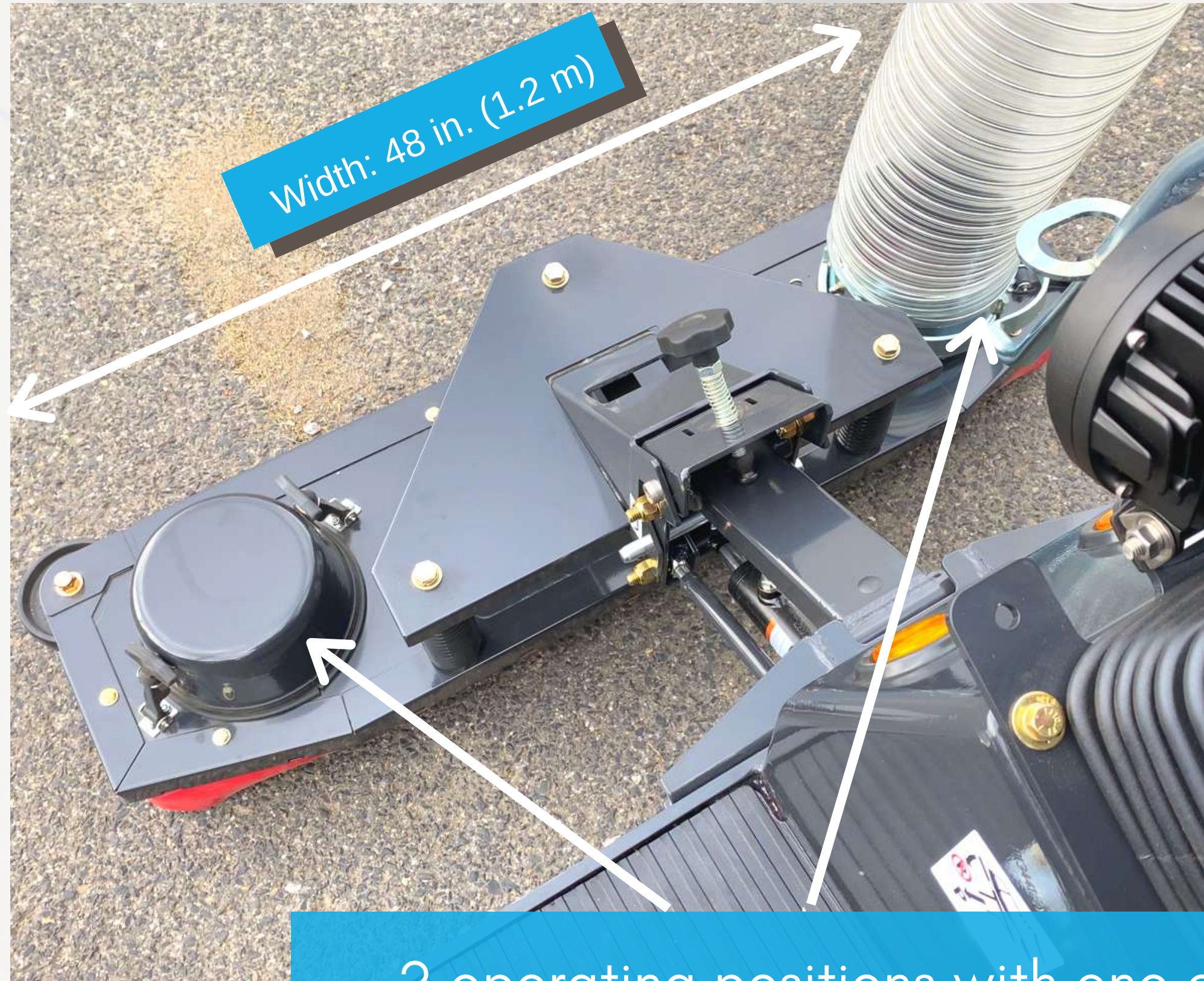
*Makes litter picking effortless & injury free*





# Vacuum Head Optional

*Effortless vacuuming, simply  
drive over litter*



2 operating positions with one on  
each side of the vacuum head





# Wander Hose

Optional

*For confined,  
hard-to-reach  
areas*



Length: 15 ft. (4.57 m)  
Diameter: 6 in. (152 mm)



# Container

*One bag*


*One container*

*Easy, Fast, Efficient*

- 16-gauge powder-coated steel container
- Total litter capacity: 100 gal. (378 L)







Bag size: 42 in. x 51 in.  
(1066 mm x 1295 mm)

## Changing Litter Bags

*One container, one bag for  
easier bag changing process  
that takes only 45 sec!*



# Bagless Debris System: Kevlar Bin



Optional Kevlar bin can be filled, then emptied into off-the-shelf bag





# Dust Control

Exhaust bag captures dust particles that can escape from the minute holes of the special Madvac collector bags or Kevlar bin





# Dust Control

Optional intermittent water mist system with 10.17 gal. (38.5 L) water tank: controls dust and eliminates risk of fire inside the container



# Safety







# Foot Step

Helps operator  
climb on board  
easily and safely

*New standard feature (Nov. 2020)*





*New*



36

## Foot Heater

Optional 3-way floor-mounted heater keeps operator's feet warm during cold weather



*New*



37



## Foot Activated Horn

Optional foot activated horn gives operator more ease and convenience than pressing the turn signal lever



# Convenience



Broom/rake holder (optional)

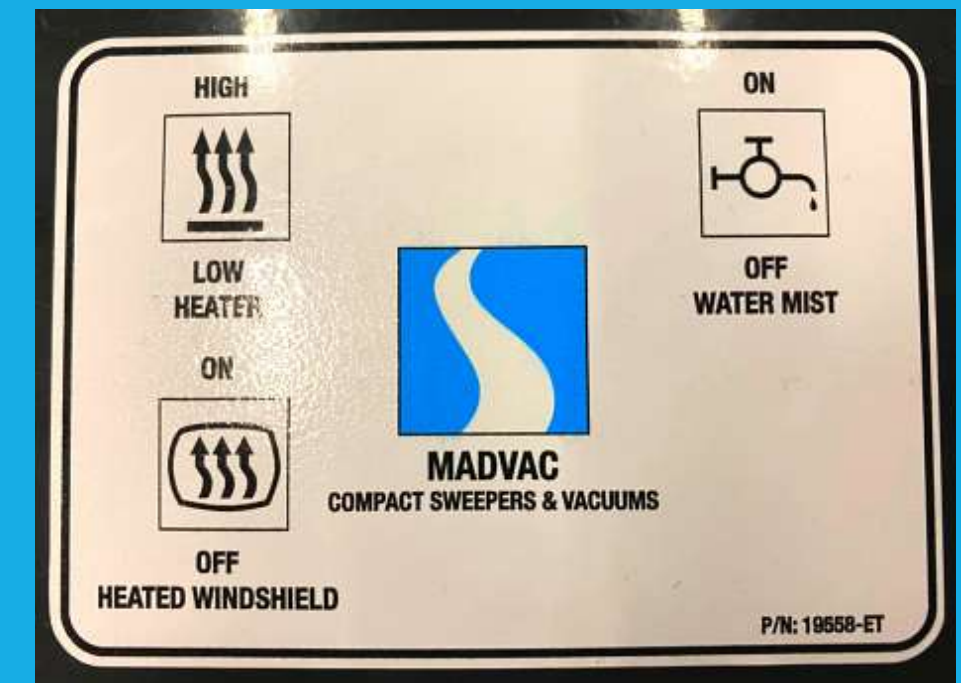
Tire flat proofing  
(option)



# Console Accessory Box

Console accessory box  
with USB / 12V aux outlet  
and switch for optional  
floor heater and optional  
water mist system

*New standard feature (Nov. 2020)*

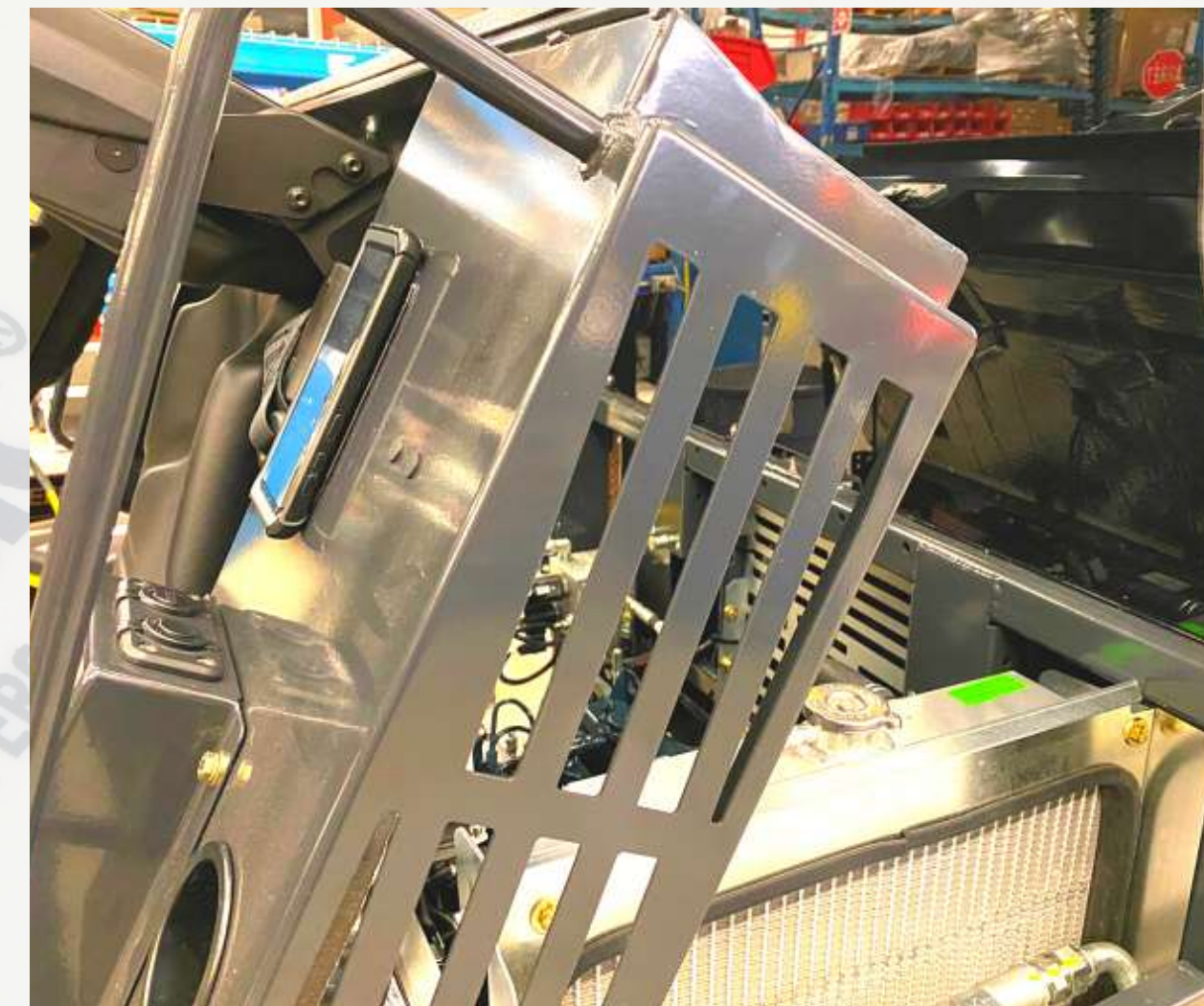




Cellphone adhesive  
surface prevents phone  
from moving or falling

*New standard feature (Nov. 2020)*

# Cell Phone Holder

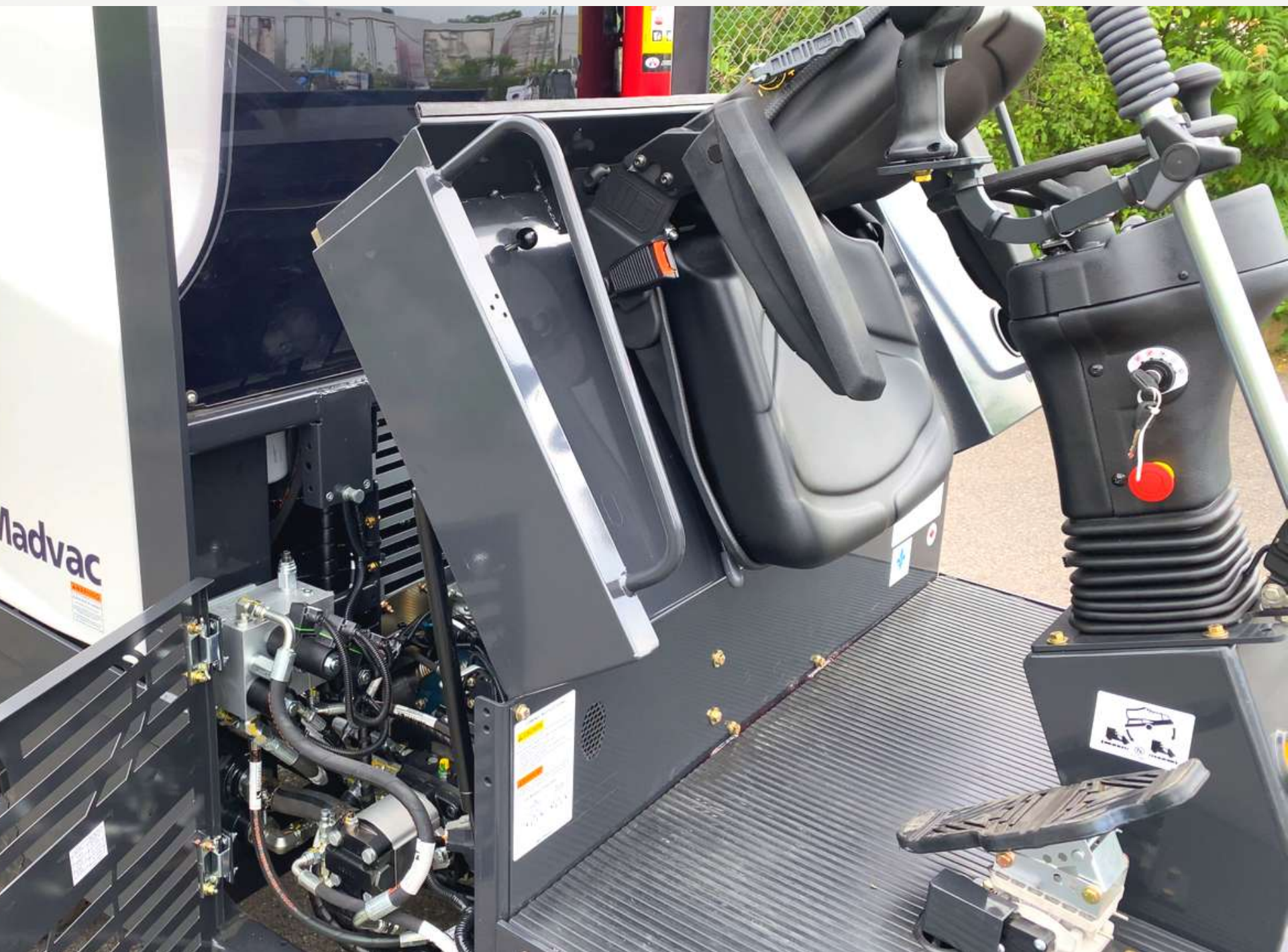






License Plate Holder





Easy access to all critical components of the machine



Hinged side door and tilt seat for engine access





Easy access to all  
critical components  
of the machine



Hinged side door for  
oil cooler and  
radiator access



To schedule a demo, request a quote, or for more information on the LN50 all-terrain litter vacuum:



855-651-0444 (USA/Canada)  
450-651-0444 (International)



info@exprolink.com



www.madvac.com



Sourcewell  
Awarded Contract

