



# MODEL M43R PROPOSAL



## Qty.

### M43R BASIC UNIT

1	One new Elliott HiReach M43R having a 48' working height. Basic unit includes base assembly supporting rear mounted rotating turret, hydraulically powered continuous rotation mechanism, oil reservoir mounted to turret box, oil, and manual hydraulic controls mounted to turret. Electronic proportional three stick remote controls on platform. "A" type outriggers at front and rear with fixed outrigger shoes. Steel two section hydraulically telescoping boom with double acting lift cylinder. External cable carrier to boom tip with cover. Hydraulically self-leveling and rotating 40" x 60" EZR work platform with remote leveling from platform, and aluminum floor. Power take off, pressure gauge, pump and holding valves on all cylinders. Remote start/stop at upper and lower controls, 12-volt emergency pump with switch at upper and lower controls, PTO hour meter, backup alarm, fire extinguisher, and two body harness, triangle kit and lanyard. LED Lights to Include All Bed Marker Lights, Stop, Tail and Turn. Installed on chassis, tested, checked and ready to operate. One paper and two electronic copies of the operator manual and parts book. Unit certified to ANSI A92.2 for Vehicle-Mounted Elevating and Rotating Aerial Devices. Platform capacity 500 lbs.
---	--

### BED/ BUMPER OPTIONS

1	12'-6" Steel Bed With LED Lights and Grip Deck Coating (For Use With Crossbody Box)
1	Tie Down Rails On Both Sides of Bed (wood/steel)

### LIFTING OPTIONS

1	2,000 lb. Planetary Winch With Anti-Two-Block Switch, Horn, 110' of 5/16" Cable & Retainer Lug
1	500 lb. Platform Mounted Jib With Hydraulic Winch. Jib Stows in Platform.

### PLATFORM ACCESSORIES

1	110 Volt Line to Platform
1	(2) Sign Forks On Platform
1	Walkway Access to Platform When Boom Stowed (19,500 GVWR Chassis)

### PTO OPTIONS

1	Hot Shift PTO For Automatic Transmission
---	--

### TOOL BOX OPTIONS (STEEL)

1	98" x 24" x 30" Steel Crossbody Box (Requires 24" Shorter Bed)
1	36" x 20" x 18" Steel Underbody Mounted

### ADDITIONAL OPTIONS

1	(2) LED Strobe Lights, (1) Mounted on Each Side of Turret Near Top With Switch in Cab
---	---

### PAINT OPTIONS

1	HiReach Unit Painted White, Subframe Painted Black, Outriggers Painted Red (STD)
---	--

### \*\*\* CHASSIS NOT INCLUDED \*\*\*

### Recommended Minimum Chassis Requirements

19,500 GVWR (7,000 lb. FA/12,500 lb. RA)  
108" CA  
94" AF  
(These minimum requirements may change as options are added)

1	Upfitting Preparation Charge for Customer Supplied Chassis (Chassis Spec Must Be Approved by Factory Prior to Delivery)
---	--



## KEY FEATURES

- Cable-free hydraulic boom extension for smooth 'point and shoot' functionality
- Industry-leading unrestricted side reach and 360 degree stability
- Oversized two-person steel work platform with EZR quick connect system and platform stowed jib winch
- Electric/Hydraulic upper controls for smooth and precise operation
- Full length subframe with hydraulic outriggers for excellent stability and long chassis life



### EZR Work Platform

40" x 60" steel platform with skid-resistant aluminum floor. Removable for lifting loads with the main winch and boom tip sheave.



### Material Handling Main Winch

Elliott's 2,000 lb main winch option allows lifting loads with the work platform attached or removed, increasing lifting versatility.



### Oversized Cable Carrier

Reliably carries hydraulic, electric, welding, oxy/acetylene, air and other accessory lines to the work platform.



### Compact, Versatile Design

Engineered to be installed on a 19,500 lb GVWR truck with a narrow outrigger spread to work in tight spaces.

## OTHER FEATURES

- **Stowable Platform Jib Winch:** Equip your HiReach platform with Elliott's unique jib winch that stows in the platform and features an extendable boom and mast to lengthen your reach and reduce setup times.
- **Hydraulic System:** Hydraulically powered continuous rotation mechanism. Holding valves on all cylinders. 12V Emergency pump.
- **Control System:** Manual hydraulic controls mounted on turret. Electronic proportional three-stick remote controls in work platform with hi-lo range for smooth operation in tight spaces. Includes remote engine start/stop, engine speed, and emergency stop switch.
- **Outriggers:** "A" type hydraulically powered main and behind cab outriggers.
- **Certification:** Certified to ANSI A92.2 for Vehicle-Mounted Elevating and Rotating Aerial Devices.

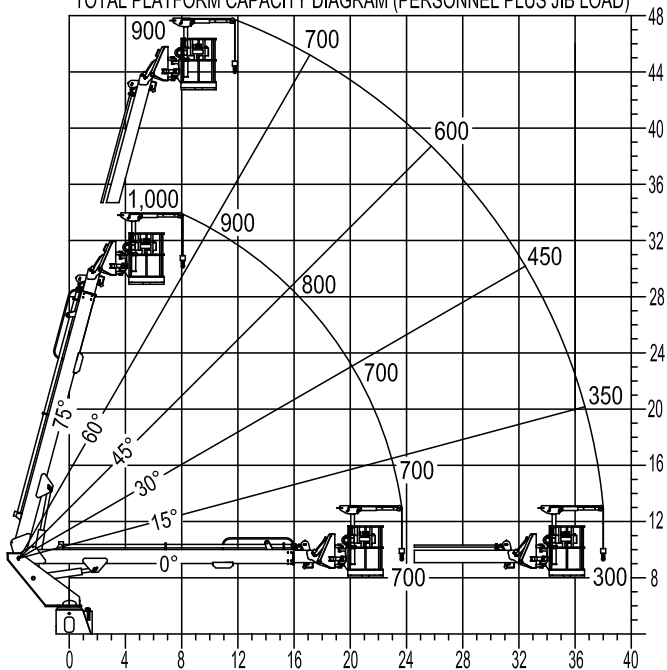
\*Specifications are subject to change.



## MAXIMUM WORKING LOADS PLATFORM AND JIB OPERATION

MAX PLATFORM CAPACITY: 500 LBS MAX JIB CAPACITY: 500 LBS

TOTAL PLATFORM CAPACITY DIAGRAM (PERSONNEL PLUS JIB LOAD)



USE OUTRIGGERS AT ALL TIMES · AVOID JERKING LOADS · 360° RADIUS

DO NOT PAINT OVER ANY LABELS

1219500 120516

## TECHNICAL SPECIFICATIONS

<b>Working Height</b>	48' / 14,6 m
<b>Side Reach</b>	38' / 11,6 m
<b>Platform Capacity</b>	500 lb / 227 kg
<b>Platform Size</b>	40" x 60" / 102 x 152 cm
<b>Main Winch Capacity</b>	2,000 lb / 907 kg
<b>Jib Winch Capacity</b>	500 lb / 227 kg
<b>Front Outrigger Spread</b>	10'1" / 3,1 m
<b>Rear Outrigger Spread</b>	10'1" / 3,1 m
<b>Minimum GVWR</b>	19,500 lb / 8845 kg

## AVAILABLE OPTIONS

- 500 lb. Capacity Stowable Jib Winch in the Work Platform
- 2,000 lb. Capacity Material Handling Main Winch
- 110V Lines, Welding Leads, Oxy/Acetylene Leads, Air Lines, Water Lines and More to the Work Platform
- (2) Sign Forks on the Work Platform
- Walkway Access to the Work Platform with the Boom Stowed
- Steel, Wood, or Aluminum Flatbeds
- Various Rear Bumper Styles
- Steel or Aluminum Toolboxes
- Composite or Wooden Outrigger Pads
- Spanish/Metric Charts
- Paint White, Red or Custom Colors
- Much More...

**QUESTIONS? CONTACT US.**

**402-592-4500 | sales@elliotequip.com**