





Welcome to the family.

**“We are what we repeatedly do. Excellence then,
is not an act, but a habit.”**

-Aristotle



We understand that our customers have many choices when it comes to pipeline inspection and rehabilitation equipment. We work hard to ensure that the equipment we provide is designed to do the job it was intended for and that it was manufactured to the highest quality standards.

Providing the best equipment is the first step in making sure our customers are successful. Providing best in class after-sales support, and our commitment to continue that support for years to come, is what truly sets us apart from the competition.

We come from a contracting background. Pumping septic tanks, installing pipe, inspecting pipe.... the company was founded by people who got their hands dirty. Our founders realized that there wasn't a good source for pipeline inspection equipment, or a company living up to the minimum standards of service after the sale. That's why we started RapidView IBAK North America, and it is why we work hard every day to make sure that our customers have what they need to be successful.

- The RapidView Team

You can trust the company that invented the industry!



- 1945 — IBAK Founded
- 1957 — First Sewer Camera
- 1968 — First Camera Tractor
- 1980 — First Pan & Tilt Camera
- 1989 — First Report Software
- 1993 — First Lateral Launch Robot
- 1993 — First Always Upright Pan & Tilt
- 1996 — First Pan & Tilt for 4" (100mm)
- 2000 — First Pan & Tilt Push Camera
- 2002 — First 3D Optical Scanner
- 2006 — First Manhole Scanner
- 2013 — First Integrated Rehab Robots
- 2013 — First Integrated HD Camera
- 2016 — First Built-In 3D Sensor
- 2018 — First 4K Hi-Res 3D Scanner

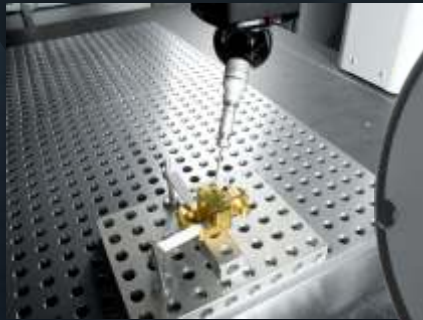
Quality and Service

We've all done it - bought something on the cheap and regretted it later...

Price is a huge factor, but it is not the only thing you need to consider when choosing your inspection equipment. What you really need is a piece of equipment that is going to last, and a system that is going to perform to your requirements and keep you productive.

Cheap equipment that breaks down often or doesn't work properly to begin with isn't a bargain, it is a drain on your resources and time. IBAK designs and manufactures the components that go into our systems. We don't rely on off-the-shelf consumer products that may be discontinued next month. We manufacture over 85% of our product components so we can guarantee quality, reliability and availability of spare parts 10 years down the road.

Remember... Quality does make a difference!



RapidView U

Your RapidView Training and Support Resource

RapidView is committed to providing customers with the best information and resources possible. RapidView provides technical videos for common repair and maintenance, including the retermination of cables. These videos allow customers to make simple repairs themselves, or in the field if necessary. Contact the RapidView service center to receive more information about these valuable tools. We also provide free hands-on repair and maintenance programs at our headquarters throughout the year. Please visit our website to learn more or register for a class!

"This is the best piece of equipment we've ever purchased." - Contractor

"It's obvious that the service team cares about the customer and enjoy their jobs. You should be proud of your team." - Contractor

"Over the years we have tried almost every brand of inspection equipment. RapidView IBAK equipment is different. It works." - Municipality

"We've been running our system 24 hours a day, for years. This system has given us a huge return on investment." - Contractor



How are we different?

We stock over \$4 million in parts at our headquarters in Rochester, Indiana and many more throughout the country at our partner service centers!

We strive to get you back up and running quickly with repair time goals of 48-72 hours.

Nothing ever needs to be sent to Germany. All repairs are done in the United States or Canada.

Our equipment is quality-checked multiple times throughout the manufacturing process and prior to shipment.

IBAK products are manufactured to ISO 9001:2015 and ISO 14001:2015 standards.

Full 1-year warranty on IBAK equipment

10 - year spare parts guarantee

Free technical training throughout the year and free phone support during business hours.

Free SeptemberFest biennial training and customer appreciation event.

Over 20% of IBAK personnel are dedicated to research and development, resulting in almost all of the major advancements in our industry - today, and in the future.

We answer the phone. It is a simple thing, but we make sure we are available, and ready to help.

We are not afraid to say "no", but love saying "yes". Other manufacturers might make you promises they cannot keep, but we won't. Setting the expectation up front, we do everything we can to live by our word and provide you with service you can count on.

We've built a successful company because of our customer's success, not just by selling equipment. We understand this, and that is why we want to give our customers all the tools they need to be successful.

RapidView and its dealers are committed to providing customers with the best equipment and service in the industry. We understand that time lost due to repairs or poor training are detrimental to your productivity and bottom line. We offer a variety of completely free training programs for our customers throughout the year, because we know however well-built, all equipment can break down. RapidView provides you the training, tools and support to conduct many repairs yourself.

When faced with a more complicated repair, you can be assured that our Service Techs will repair your equipment quickly and have it back to you as soon as possible. With millions of dollars of spare parts on hand, and decades of experience, our team strives to keep your equipment in the field being productive and helping you reach your goals.



After Sales Service Team

PANORAMO® 4K

Perhaps the greatest innovation in pipeline inspection technology in decades, the PANORAMO® system has provided better data to engineers, reduced stress for operators, increased productivity and changed the way we inspect our underground infrastructure. Now, with the revolutionary PANORAMO® 4K technology, it provides even better image quality. Inspect more than twice as much pipe per day, reduce your operating costs by more than 30% compared to normal CCTV and provide system users with incredible high-definition imagery!

Performance is Key

PANORAMO® 4K is fast. Users collect data at a rate of up to 69 ft. (21m) per minute (40 ft. (12m) per min with PANORAMO® 150 4K) without needing to stop. All this adds up to a technology that reduces your cost, increases your production and dramatically enhances your deliverables.



PANORAMO® 2 4K
Inspect pipelines from
8" (200mm) and up.



PANORAMO® 150 4K
Inspect pipelines from
6" (150mm) and up.

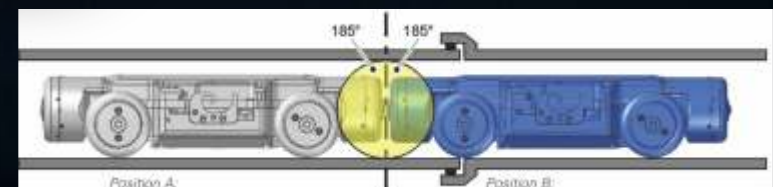
Technical Specifications

Max Speed	69ft.(21m)/Min.
Pipe Diameter	6" (150 mm) and up
Pressure Protection	Standard
Viewer Software	Free, distributable
Cameras	Twin 185° Digital
Zoom	Digital
3-D Perspective View	Standard
Side Scan (Unfolded) View	Standard
Measurement	Standard in Unfolded View
Lighting (PANORAMO® 2)	Xenon Strobe
Lighting (PANORAMO® 150)	High Power LED

IBAK PANORAMO® 4K

The PANORAMO® Principle - Changing your process

IBAK designed PANORAMO® from the ground up to address the weaknesses of traditional video technology. The PANORAMO® method changes your current process into data collection in the field and data analysis back in the office. This division of labor increases safety, reduces mistakes and increases productivity. The technology enables your employees to work to their potential and avoid costly and time-consuming mistakes caused by inattention or stress.



Easy Data Collection - Amazing Results

Inspecting a manhole with PANORAMO® SI 4K is as simple as 1-2-3. All you have to do is lower the unit into the manhole, turn it on, and pull it back up! No other system captures the quality or quantity of data that PANORAMO® SI 4K does.

Types of Data

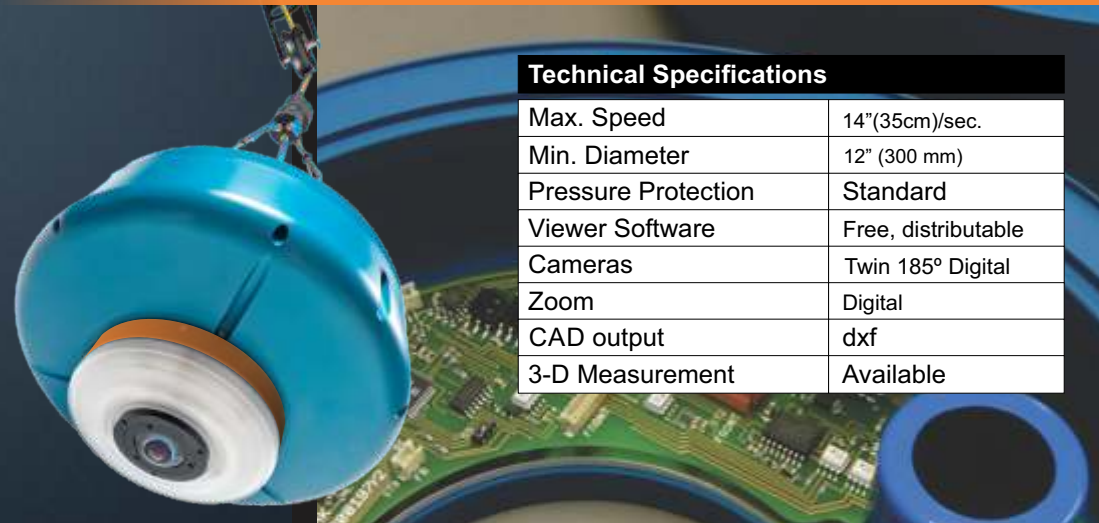
The PANORAMO® SI 4K captures a complete 360° Perspective View of the manhole which you can view at any time, from any angle. The Unfolded View allows you to look at the entire manhole surface on one screen and the Geometric View allows you to measure features inside the manhole in three dimensional space. Simply export the Geometric View out to any CAD program to continue your analysis!

100% Coverage | More than 4 times faster!

Other manhole inspection methods are slow, clumsy, and unsafe compared to PANORAMO® SI 4K. With its unique ability to capture every inch of the manhole from multiple angles - you will never miss an observation.

IBAK PANORAMO® SI 4K

The PANORAMO® SI 4K has revolutionized the way system owners inspect their buried structures. Manholes, duct boxes, storm drains, and any other underground chamber can be inspected quickly and safely with this system. Keep your employees safe, increase the productivity and accuracy of your crews and provide data that helps system owners make informed decisions!



Technical Specifications

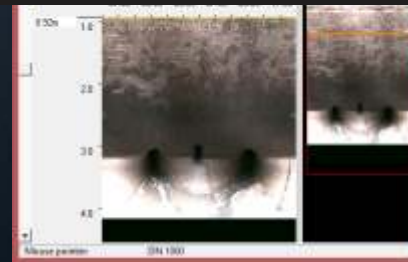
Max. Speed	14" (35cm)/sec.
Min. Diameter	12" (300 mm)
Pressure Protection	Standard
Viewer Software	Free, distributable
Cameras	Twin 185° Digital
Zoom	Digital
CAD output	dxf
3-D Measurement	Available



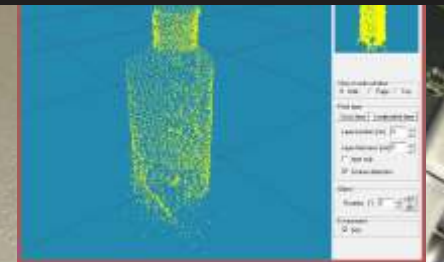
360° Perspective



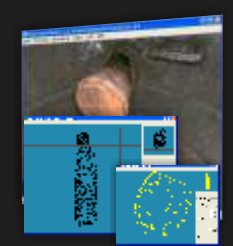
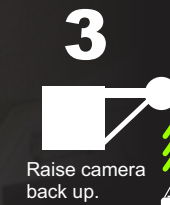
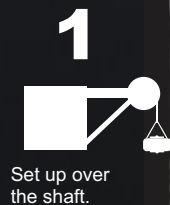
Unfolded View



Geometric View



NOW WITH 4X INCREASED RESOLUTION!



Lateral Launch

LISY 3.2 Technical Specifications

Pipe Diameter	6" to 48" (150mm to 1200mm) with accessories
Pressurized Protection	Standard
Pan Range (articulation arm)	180°
Tilt Range (articulation arm)	45°
Push Speed	Variable control
Overall Cable Length	600 ft. (182 m)
Push Rod Length	120 ft. (36 m)

Safety and Reliability

The LISY 3 was designed to be easy to use, simple to maintain and safe to operate. The synchronized LISY drum works with your existing IBAK cable drum to payout and retrieve the cables at the same time. This dramatically reduces the time you need to spend setting up or retrieving the system after the inspection.



The NEW NANO® cameras make reverse launching much easier!



Track Pipelines with 3D GeoSense®

This revolutionary system from IBAK gives you the power to map mainline and lateral pipelines with accuracy and speed. The new 3-D GeoSense® sensor tracks the movement of the camera as it travels through the lateral, capturing distance, position and depth in three dimensional space. This data is captured and displayed by your data logging software.

The Choice of True Professionals

The LISY system will inspect 2" (50mm) and larger lateral pipelines from the mainline, depending on the launch camera chosen. The mainlines can be from 6" (150mm) to 48" (1200mm) diameter. The LISY has proven itself throughout the world to be the most capable and highest performing lateral launch system on the market today.

Productivity in the Field

The ergonomic design and rugged construction of the LISY 3 system ensures that you will experience less breakdowns and more time in the field. The simplicity of operation will increase your productivity, providing a much greater return on investment.

Cross Bore Inspection

The LISY 3 has become the industry standard for large lateral assessment projects. Cities and contractors demand the performance and reliability that our systems can offer!



MicroGator[®] 2.0

8"-32"

Cutters & Grinders

Dimensions

Length	49.2" / 1250mm
Weight	121 lbs. / 55 kg
Cable Length	330 ft. or 500 ft.

Camera Tractor

Chassis Power	.27 hp / 200 Watt
Rotating Elbow	400°
Top Speed	40 ft. per minute

Cutting Motors

Brushless 3-phase electrical drive, water cooled	
Power	4.7 hp / 3500 Watt
Max. RPM	10,000 rpm

Have you ever wished that you could have our high level of reliability, durability and attention to detail in your cutter system? Well, the wait is OVER! The NEW MicroGATOR[®] 2.0 is the powerful, single-point electric reinstatement cutter manufactured to the exacting quality standards of IBAK. With longer cable lengths, powerful and quiet cutting motors, and drive units designed to withstand the toughest jobs, these cutters have already reset the industry's expectations.

High powered cutting motors are deployed from the durable cutter chassis. The main body expands to center the tool in the pipeline and the on-board monitoring camera ensures that you can operate the unit with ease. You can even make 360° cuts!



NEW MicroGATOR[®] 2.0 uses the same wheelsets as our popular T76 Tractor system for added modularity and versatility!

"The new GATOR is the most powerful cutter we've ever used." - Contractor

NEW MicroGATOR[®] 2.0 BG 1 Motor allows users to install a front-viewing camera for better forward awareness and ease in traversing the pipeline.

"Having one cutter do so many different sizes of pipes makes it easy." - Contractor

"It is so quiet you can't hardly tell it is working. You don't have to disturb the homeowners with large air compressors or pumps." - Contractor

MicroGATOR[®] 2.0 features the option for our 4th-Axis articulation, which allows you ultimate control during cutting operations.

Built on a modified version of our large mainline tractor, many parts are interchangeable between inspection and rehabilitation - most especially wheels.

The IBAK CutterCam[®] gives you an incredible view of the work area and keeps the lense clean with our unique air-curtain technology. Even if it does get dirty, simply wash it off and wipe it down with the on-board, remote wiper system!



Cameras



AXIALCAM 2.0

The AxialCam 2.0 version includes LED lighting, electronic upright picture control and the ability to inspect 75mm / 3" pipelines and up. For smaller diameter inspections please see the AxialCam 1.0 on MicroLite information page.

NANO®

While the NANO® is capable of traveling in pipelines as small as 2" (50mm) in diameter, you will not be giving up power or flexibility. The NANO® has many of the same features of the larger ORION Zoom including: laser measurement, integrated location transmitter, bright LED lights, pressure regulation and full pan and tilt functionality!

NANO-L®

The NANO-L is perfect for LISY Lateral Launching. The smaller camera, when used with our more flexible pushrods, will allow you to more easily launch "backwards" into laterals when traveling against the flow. The smaller size also means you can push around obstacles and pipe bends much easier.

ORION® Zoom

The workhorse of our camera line. Deploy as a push camera or on a mainline tractor system in pipelines 4" (100mm) and up. Pan & Tilt, integrated location transmitter, auto-uprighting, auto-iris, and adjustable focus. The ultimate in flexibility and modularity. Now available with 3x digital zoom and laser measurement!

ORION® -L Zoom

The ORION-L adds our unique lateral navigating stick, nicknamed "Kiel stick" which was named for the city in which it was created. This camera allows you to choose direction and "steer" into and around pipe fittings. The ORION-L Zoom is perfect for industrial applications or lateral launching.

FEATURES	CERBERUS	AXIALCAM	NANO	NANO-L	ORION Zoom	ORION-L Zoom	POLARIS	ORPHEUS Lite	ORPHEUS 2.0	ORPHEUS HD
Range (Diameters)	Lg. Diameter	2"/3" and Up	3" and Up	3" and Up	4" and Up	4" and Up	4" and Up	6" and Up	6" and Up	6" and Up
Sonde Transmitter	N/A	In Pushrod	In Camera	In Camera	In Camera	In Camera	In Camera	N/A	N/A	N/A
Pan & Tilt			■	■	■	■	■	■	■	■
Zoom					■	■	■	■	■	■
Auto Iris	■		■	■	■	■	■	■	■	■
Always Upright Image		■	■	■	■	■	■	■	■	■
Auto Focus		■	■					■	■	■
Laser Measurement	■		■	■	■		■		■	■
Pushrod Capability		■	■	■	■	■	■			
Lateral Navigation				■		■	■			
E-Flip								■	■	■
High Definition Video									■	■

Laser Measurement Definitions - What can I measure?

Deformation: The amount the pipe is deformed from the anticipated circular shape (i.e. "crushed pipe")

Diameter: The diameter of the pipeline.

Protrusion: The distance an object protrudes inside pipeline (i.e. a "protruding tap")

Width: A measurement on the pipe wall (i.e. "crack width")



POLARIS®

The POLARIS allows for the ultimate flexibility when used in small diameter applications. The camera is mounted on a patented pivot arm that allows you choose your direction when pushing around bends and junctions in the pipeline. All the while keeping the pipe view clear and allowing for laser measurement.



ORPHEUS Lite®

This more economic version of the extremely popular ORPHEUS 2.0 provides great value for customers wanting to complete standard pipeline inspection work. Oriented vertically, the camera is quick to inspect laterals at 12 o'clock. Bright LEDs, auto-focus, auto iris, upright picture control and E-Flip make this a great camera for 6" and up pipelines!



ORPHEUS® 2.0

This mainline camera has an incredible feature list including pan & tilt, 120x Zoom, LED lighting, laser measurement, auto-iris, auto-focus, upright picture control, cross-joint illumination, and E-Flip picture control. The ORPHEUS® is the core to any mainline system inspecting 6" (150mm) and up pipelines.

The True Next Generation of Inspection... High Definition!

You probably have a high-definition TV at home. Truth is, your mobile phone probably has a higher resolution than your current CCTV inspection system. The time has come to bring dramatically higher visual fidelity to the sewer inspection market. If you are a municipality interested in working with the best video data available or a contractor wishing to leverage the quality of your services - The ORPHEUS® 2.0HD system is for you!

The purpose of all CCTV systems is to capture images that allow system owners make important rehabilitation decisions. Why settle for the low-resolution of a standard CCTV system? Now you can inspect in stunning High-Definition! Give system owners the information they need and avoid blurry, out of focus pictures. Our system is the only one in the world designed from the ground up to be 100% HD, ensuring that you capture clean, crisp video and high-resolution pictures.



Mainline, push, or lateral launch applications!



Cross-Joint Illumination

The ORPHEUS® 2.0 and ORPHEUS® 2.0 HD cameras utilize unique lights set into the camera head at an angle specifically to illuminate inside pipe joints and gaps. These lights let you see clearly into these areas without obscuring shadows!



CERBERUS®

Manned entry camera which connects directly to your mainline cable. Includes full duplex two-way communication and safety harness.

Track Pipelines with 3D GeoSense®

This revolutionary system from IBAK gives you the power to map mainline and lateral pipelines with accuracy and speed. The new 3-D GeoSense® sensor tracks the movement of the camera as it travels through the lateral, capturing distance, position and depth in three dimensional space. This data is captured and displayed by your data logging software.

The NANO®, ORION®, POLARIS® and ORPHEUS® 2.0 cameras have the option of having the 3D GeoSense® sensor installed when you order them. This powerful new tool opens up new options for acquiring and using positional data for underground utilities. Please contact your representative for more information, or to schedule a demonstration!



ORPHEUS® 2.0 HD Technical Specifications

Type	Pan, Tilt & Zoom
Imager	Full HD CMOS
TV Frames/Second	30 fps
Protection Class	IP 68/Pressure Monitored
Autofocus	Intelligent, One-Push Design
Zoom	10x Optical, 12x DIGITAL
Laser Measurement	Linear and LaserScan*
Pan/Tilt Range	240° (+/- 120°)
Pan/Tilt Presets	45°, 90°, Joint insp.
Lighting	Power LED, Joint Gap Illumination

*Requires third party software and possibly system update.

Tractors



Heavy by design

Our equipment is designed to be compact and heavy. Why should a tractor be heavy? Traction is only achieved by friction between the contact surface (wheel) and the pipe wall. Our systems pull longer distances and through slippery lines because we build them out of dense materials that provide the maximum traction!

FEATURES	T66/T66HD	T76/T76HD	T86/T86HD
Range (Diameters)	4" (100mm) and up	6" (150mm) and up	8" (200mm) and up
Zero Radius Steering	✓	✓	
Tractor Range (pull distance)	up to 1000' (300m)	up to 1640' (500m)	up to 2000' (600m)
2-Axis, Pivoting Connector	✓	✓	✓
Automatic Tilt Compensation (ATC)	✓	✓	
Location Transmitter on Camera Base		✓	✓
LISY Attachment (optional)		✓	✓
Elevator Attachment (optional)	Manual	Electric	Electric

Camera Tractors - Functionality and Flexibility

A critical part of the inspection system, the tractor carries the camera into the pipeline. If you can't get the camera there, you aren't going to see it - so make sure that you choose the correct tractor for your application. While each tractor has its own unique strengths, you can usually make your decision based upon the expected inspection length required, and the diameter of the pipelines you will be inspecting. Our tractors are designed and engineered to work in pipeline environments. Compact, powerful, durable, and agile, our tractors will provide you with years of dependable operation.



HD Camera Tractors

Each camera tractor and its associated base modules are available in an HD version. There are many possible configurations which allow you great flexibility.



T86

T76

T66

T66 Camera Tractor

The T66 Steerable Camera Tractor is the latest in the long line of innovative sewer camera transporters from IBAK. The T66 is the natural evolution of the incredibly popular KRA65 model that has been sold throughout the world. The T66 boasts a heavier chassis for added traction, smaller external dimensions for ease of use and greater pulling strength than its predecessor. Small and agile, yet more powerful than some tractors twice its size - the T66 is the core of an effective inspection system for pipelines ranging from 4" (100mm) to over 24" (600mm) in diameter.

T76 Camera Tractor

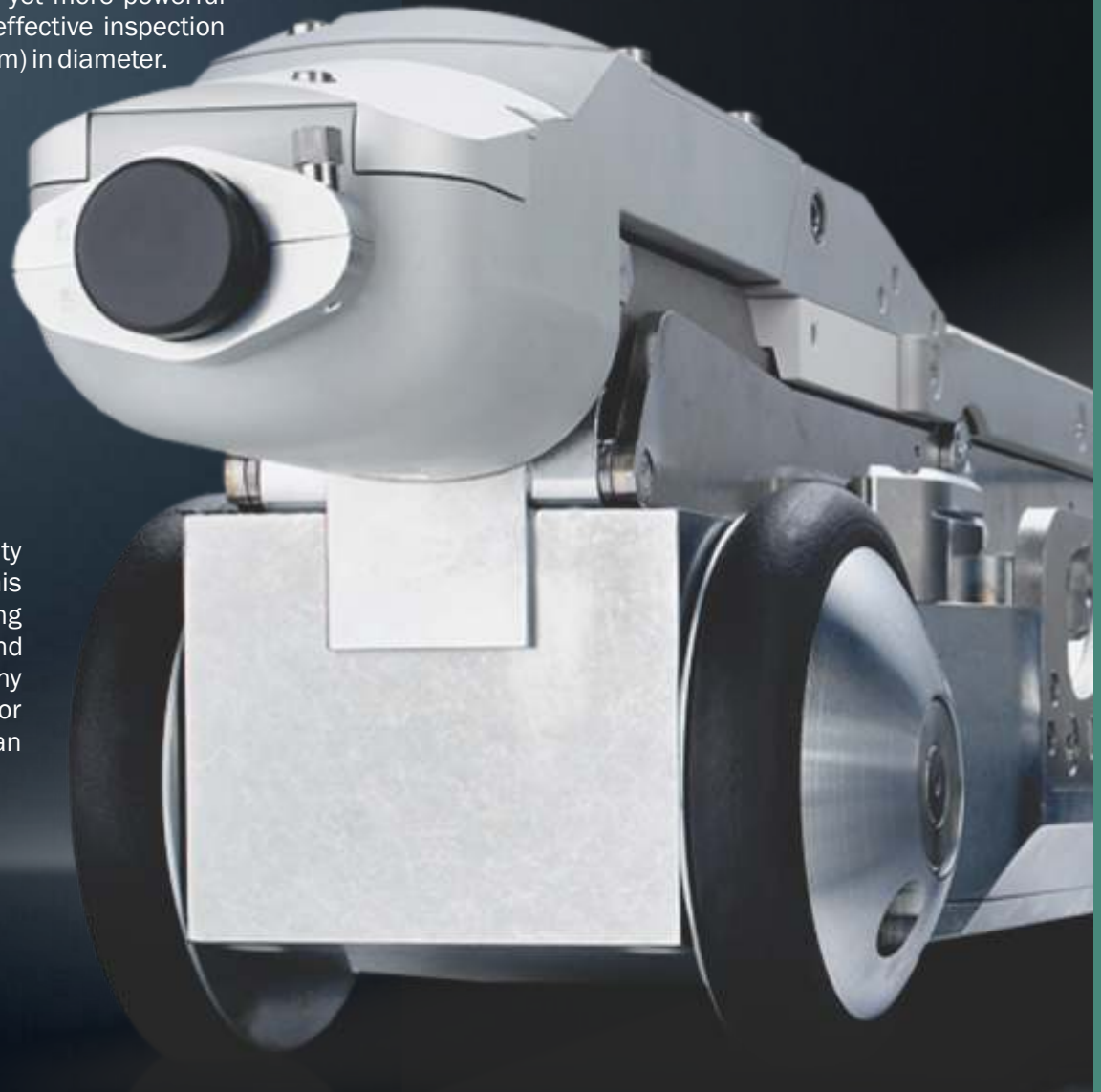
The new T76 has the broadest range of any tractor system. Capable of inspecting a 6" (150mm) diameter line, the T76 easily transforms into a tractor capable of inspecting much larger diameter pipelines. The T76 is capable of accepting a LISY Lateral Launch system attachment, turning it into a complete mainline and lateral launch solution! Features include zero radius steering, automatic tilt compensation, and a folding 2-axis rear connector. Accessories include remote elevators for lifting the camera above the water line and inclinometers for mapping or verifying the slope of the pipeline.

T86 Camera Tractor

The T86 is the high power cousin to the T76. By trading steerability for a single, more powerful motor you are able to operate this tractor in the most demanding environments. Heavier, providing greater traction, the T86 is capable of pulling out more cable and traversing larger amounts of debris. Perfect for storm lines or any large diameter pipeline! Includes an integrated transmitter for location above ground. If used with the ORPHEUS® 2.0 the T86 can easily inspect pipes up to and over 120" (3000mm) in diameter.

Automatic Tilt Compensation (ATC)

One of the most unique technical features that IBAK steerable tractors provide is ATC. An internal sensor recognizes when the tractor is beginning to climb the pipe wall and will steer the tractor automatically back to the center of the pipeline. This dramatically reduces the chances of time consuming and expensive repairs caused by flipping over during operation.



Durable, powerful and Compact

The T66 compact crawler is small enough to fit into a 4" (100mm) pipe, but strong enough to pull out up to 1000' (300m) of cable.

T66 with optional wheels and ORION camera

Reels and Cable

Lowering Winch

KW 305 / 310 and KW 505 cable reels include a built-in lowering winch for tractor and camera systems. This powerful winch makes inserting or removing the equipment from the pipeline easier and safer. It reduces the chance that equipment will be dropped, reducing the strain on your back *and* your wallet.

KW 305 / KW 310(FO) Synchronized Cable Reel

The KW 305 is our most popular reel for use in mainline and lateral launch inspections. Features include: adjustable boom and optional work light, integrated power winch for lowering and retrieving equipment, automatic level-wind, fully synchronized cable management, and a remote control pendant for tractor and lateral launch functions. Capacity is up to 1000 feet (300m) of high-strength cable. The KW 310 (FO) reel maintains the same footprint as the KW 305, but can use up to 1000 feet (300m) of high-strength, low weight fiber optic cable for use with PANORAMO®!

KW 505 Synchronized Cable Reel with Fiber Optic Capability

The KW 505 has all the same great features of the KW 310 and accepts up to 2000 feet (600m) of high-strength fiber-optic cable or standard high-strength cable. The KW 505 allows longer distance inspections and has the capability of transmitting the data from PANORAMO® 360° Pipeline Scanners.

Synchronization

The KW 305, KW 310 and KW 505 cable reels feature synchronized cable retraction and payout. This reduces wear on the cable, increases production, and greatly reduces the chance that you will back over your cable during retrieval.

Cable Reels - Making your job easier.

Often overlooked, the cable reel is one of the most important pieces of the inspection system. IBAK's line of cable reels are designed specifically to work with IBAK equipment and to withstand the harsh environments that you encounter. All mainline cable is Kevlar reinforced and coated for protection. Our standard mainline cables are rated at over 2000 lbs. (900kg) pull strength. Special cable reel features like synchronized operation, automatic level winds, and remote controls make your job easier. Our fiber-optic drums use special cable that is stronger and lighter than traditional coax cable.

FEATURES	KW 206	KW 306	KW 305	Fiber Optic Cable Reels	
				KW 310	KW 505
Range (Distance)	656' (180m)	1000'(300m)	1000'(300m)	1000'(300m)	2000'(600m)
Mainline Inspection	✓	✓	✓	✓	✓
Cable Retraction	Power Assist	Power Rewind	Full Synchro	Full Synchro	Full Synchro
Built-In Tractor Lowering Winch			✓	✓	✓
Fiber Optic Capability				✓	✓
HD Operation					KW 505 HD Version
4K Available				✓	✓



KW 206 Compact Cable Reel (right)

The KW 206 reel was designed to be compact, powerful and easy to maintain. This design is based on decades of manufacturing expertise and real world project requirements. This drum includes an automatic level wind, powerful retrieval motor, rear tractor/winch controls and an emergency stop switch.



What is the difference between “Powered” and “Synchronized” Cable Retrieval?

All our cable drums are capable of retrieving the down-hole equipment efficiently and quickly. Cable drums with Synchronized cable retrieval add a smart sensor on the cable boom which tells the drum to speed up, or slow down, according to cable slack. Drums with this feature require less monitoring and can increase the safety. Powered drums lack this special sensor and are controlled by the operator.



Portability

The KW 206 and KW 306 drums are built so compactly that you can deploy them in our specially designed Mobile Rack systems.

KW 306 Compact Cable Reel (right)

The KW 306 is the larger brother of the KW 206. Sharing the same core features, the KW 306 is larger to accommodate up to 1000' linear feet of cable. Whether mounted in a vehicle, ATV or trailer, this drum is a compact, economical option for most mainline inspections.



Booms

One of two types of booms are required to help protect the cable. The mounted version (pictured above) or the mobile version (not pictured).

Compatibility

The KW 206 and KW 306 drums were designed to work with the new generation controllers (BP1/2/10/100). Please note that currently there is no integration with these drums for advanced inspection systems such as LISY, HD or PANORAMO® 4K equipment.





Controllers

Controllers - Efficiency and Convenience

The best equipment in the world demands a control system to match. What good would a race car be if you had to reach behind the seat to shift the transmission? We take the time to solicit feedback from operators in the field. IBAK has been manufacturing sewer inspection equipment for over 50 years and we've learned a lot about what makes a system easy to use and efficient. IBAK equipment is designed with the operator in mind. Everything can be controlled by simple movements - the operator feels in complete control and can accomplish their tasks quickly and without strain. You can be sure that when you use IBAK equipment you are in control and getting the job done.



BP 1

BP 2



BP 100

Communication

All fixed mounted controllers and BP Mounts come standard with a bi-directional system allowing users to communicate with employees at the rear of the vehicle.

Mounting

BP Portable controllers can be mounted on a Mobile Rack for off-road inspections, or a BP Truck Desk-Mount for use in a vehicle application. Each sold separately.

BP 1 | BP 2 | BP 100 Portable Controller (Pictured above)

The portable controllers were designed to be easy to use, economical and versatile. The large screen provides you with control at the touch of your finger. The BP 2 and the BP 100 feature multi-directional joysticks for control of camera and tractor functions. All portable controllers come with IKAS Recorder software pre-installed, so that you can start capturing video and sharing it immediately. These controllers were designed with the future in mind, and are easily updated when new equipment becomes available. BP Portable Controllers are used with the MainLite[®] compact cable reels, MicroLite[®] small diameter push camera or the MiniLite[®] push system.



Modularity

Each piece of IBAK equipment is designed to meet the users needs - today and in the future! When you purchase a piece of IBAK equipment you can rest easy knowing that you will have support from all future equipment. A great example is our control systems which automatically adapt to whatever equipment has been attached, then loads the appropriate firmware and the correct control and diagnostics interface. This saves system resources, reduces overall equipment expenditures and makes the operator's interface less cluttered with options that aren't required.

FEATURES	BP 1/2/100	BS 3.5	Fiber Optic Controllers	
			BS 7.0	BS 5.0
Pushrod Control	✓	✓	✓	✓
Portable with Digital Recording	✓			
Mounting	Portable or Fixed	Fixed	Fixed	Fixed
Lateral Launch Control		✓	✓	✓
Tractor Control	✓	✓	✓	✓
PANORAMO [®] Control			✓	✓
Text Entry (On Screen Display)	✓	✓	✓	✓
Fiber Optic Reel Control			✓	✓
Up to 2000' Cable Supported				✓
High-Definition Capable			✓	✓



BS 10 MainLite Controller (Pictured Left)

The BS 10 controller was designed for vehicle mounted installations of the compact KW 206 and KW 306 cable drums. These drums contain the power supply requirements of the down-hole equipment, and therefore the controller itself can be slimmer, lighter and hidden from view. This controller includes an interface cable between the drum and the required computer. The desk component of the BS 10 is a keyboard surround with ergonomic joysticks, power on/off, microphone and 6 quick-keys for preset controls.

BS 3.5 / BS 7.0 Mainline Controller (Pictured Right)

The BS 3.5 and BS 7.0 controllers are the ultimate in ergonomic controller design. The controllers feature a small main unit which is easily mountable under the desk or in any electronic control rack. The remote control board acts as your diagnostic and control interface. All system functions are easily accessed by this small desktop unit. System information is displayed on a color LCD touchscreen. Camera and tractor movements, focus, iris, cruise control and lateral launch commands are controlled from the dual multi-axis joysticks. The BS 7.0 controller is the standard fiber optic controller. This controller functions exactly like the BS 3.5 controller but includes larger power supplies and supports fiber optic camera systems like PANORAMO and PANORAMO SI.



BS 5.0 Mainline Controller (Pictured Left)

Our most powerful fiber optic controller is the BS 5.0. The BS 5.0 controller utilizes a unique remote control panel which can be positioned on your workspace and control any piece of equipment quickly and easily. The BS 5.0 controller is the only control system capable of performing inspection lengths of up to 2000' (600m). If you need the greatest inspection distance and the brightest lighting, the BS 5.0 controller is your number one choice.

IKAS® Evolution Software

The IKAS® evolution is the newest generation of IBAK's powerful sewer analysis software, now available and supported in North America! Intuitive by design, the inspector is in full control of acquisition and sewer data analysis. PACP, MACP, and LACP data interface capable, IKAS evolution can be adapted to the needs of modern sewer inspection and each individual user's workflow. IKAS evolution is available in four base bundles with over two dozen extension options available for advanced inspections including; Full HD, 3D-GeoSense, Laser Measurement, and LaserScan profile analysis. Contact your RapidView representative to build the software package that meets your needs and budget!



IKAS
evolution

MOBILE

IKAS Mobile

The IKAS evolution Bundle for IBAK Mobile Systems includes the IKAS evolution base system and the IBAK Mobile Systems MPEG Encoding to include PANORAMO systems. PACP, MACP, and LACP data interface capable, this bundle is the perfect for IBAK Mobile Systems with the BP1, BP2, or BP100 control units.

VEHICLE

The IKAS evolution Bundle for IBAK Vehicle Systems is the ultimate software bundle for sewer data acquisition. This bundle includes IKAS evolution base as well as IBAK Vehicle Systems MPEG Encoding. In addition, the TV-Inspection bundle includes Full-HD, PANORAMO, Lateral systems, and Maps. Selective measurements also include diameter, deformation, and defects using laser.

OFFICE

The IKAS evolution Bundle for Office Workstations implements the years of IBAK know-how into an awesome office workstation experience. The Office Bundle provides the ease of use for the thorough management of sewer videos and PANORAMO films and photos. PACP, MACP, and LACP data interface capable, this bundle provides full capability for data analysis and report generation.



Compact Systems

The market spoke, and IBAK listened. Introducing the most sophisticated, compact, rugged and easy-to-use mainline inspection system we have ever designed. The MainLite® systems are adaptable, capable, and ready to go at the push of a button. We are offering these systems in affordable packages that can meet your needs whether you are a small town, large municipality or successful inspection contractor.

**Adaptable.
Elegant.
Affordable.**

*Optional portable cart shown without required boom.



*Optional granulated wheels shown.

BP 100 Controller

The new multi-function computer controller has everything you need to conduct inspections and record video right out of the box!



BP Truck Mount Bracket

This economical bracket connects the reel and controller and mounts the BP controller conveniently on a flat surface. Required for installations where the controller will be operated away from the drum.

*Optional mounted boom shown.

Compact and Portable

The MainLite® system is based around two very compact cable drums (KW 206 and KW 306) and the revolutionary BP series multi-function computer controllers. The entire unit can be mounted in a truck, or used in portable applications with the addition of our new MainLite® Portable Cart, which provides seating and an ergonomic mount for the BP 100 controller.

Affordable packages to fit all your inspection needs...

MainLite®

BP 100, T66 Crawler for 4" and up, ORION Zoom camera, KW 206 drum with 656' of cable and accessories.

MainLite® PRO

BP 100, T76 Crawler for 6" and up, powered elevator, ORPHEUS 2.0 camera, KW 206 drum with 656' of cable and accessories.

MainLite® XL

BP 100, T66 Crawler for 4" and up, ORION Zoom camera, KW 306 drum with 1000' of cable and accessories.

MainLite® PRO XL

BP 100, T76 Crawler for 6" and up, powered elevator, ORPHEUS 2.0 camera, KW 306 drum with 1000' of cable and accessories.

Highlighted features

BP 100	Touch Screen, built-in Windows 10
Recording	Built in capture card + Software
Portability	Large wheels on cart for offroad
Which tractors will it work with?	T66 and T76
KW 206	Power rewind, level wind and 656' cable
KW 306	Power rewind, level wind and 1000' cable

PREMIUM Mainline

Our most flexible and popular package!

This package contains all the inspection equipment you need to conduct video inspections in 6" (125mm) to over 48" (1200mm) pipe. With the more powerful synchronized cable reel, 1000 foot (300m) capability, larger more powerful tractor and ORPHEUS® 2.0 camera you will be able to conduct inspections with speed and accuracy. The built in cable winch lowers the tractor into the manhole, reducing stress on personnel and helps prevent damage. This is the perfect system for contractors and cities who conduct normal mainline inspections, but require the capability to inspect larger lines.

PREMIUM Mainline System

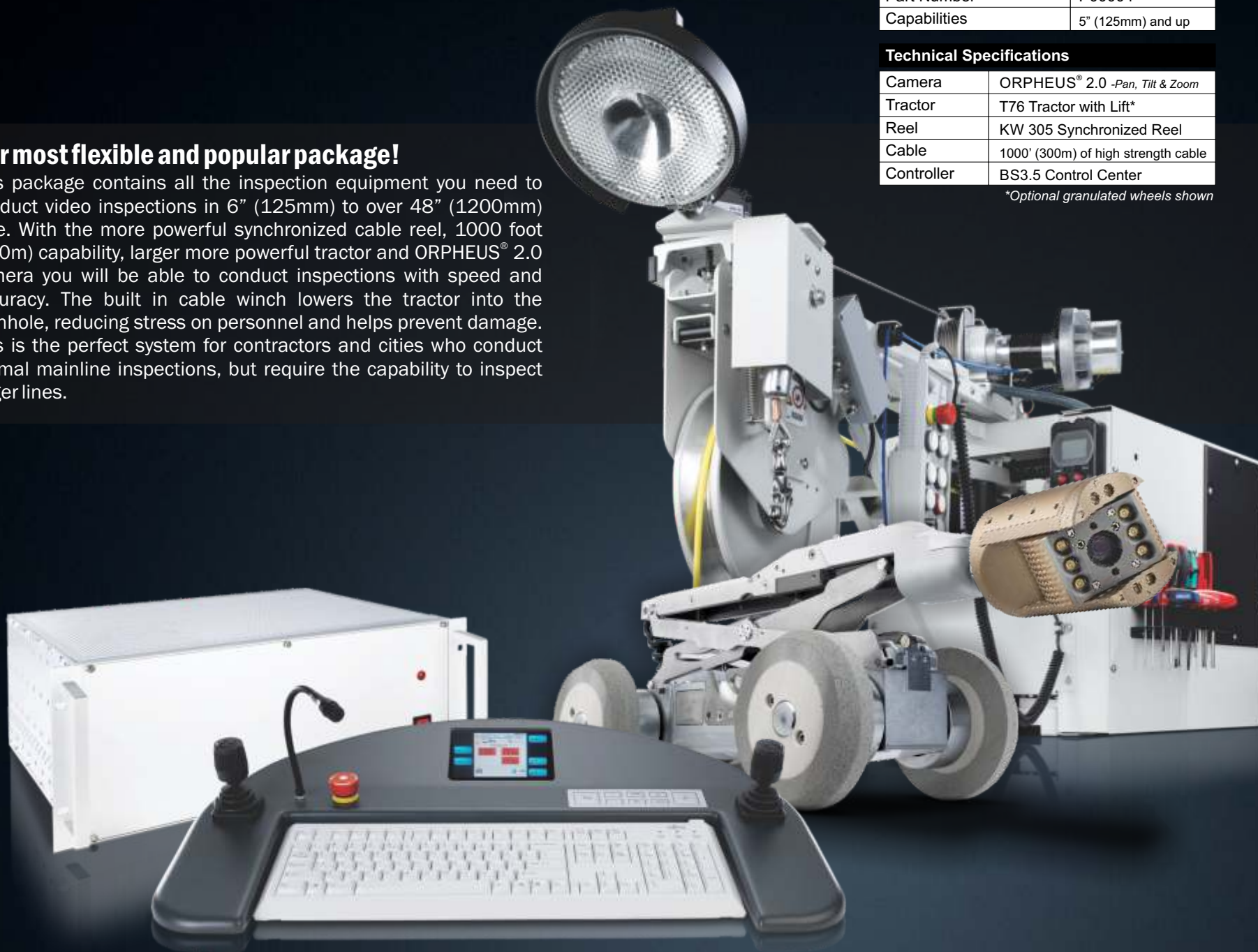
Part Number	P00004
Capabilities	5" (125mm) and up

Technical Specifications

Camera	ORPHEUS® 2.0 -Pan, Tilt & Zoom
Tractor	T76 Tractor with Lift*
Reel	KW 305 Synchronized Reel
Cable	1000' (300m) of high strength cable
Controller	BS3.5 Control Center

**Optional granulated wheels shown*

Package



ELITE Mainline

The top of the line package for true professionals!

This package has the equipment you need to inspect larger diameter pipelines up to 120" (3000mm) in diameter. The revolutionary ORPHEUS® 2.0 camera delivers exciting new features and incredible picture clarity, all while delivering enough clean, bright LED light to illuminate huge areas. We've also included a set of pneumatic wheels to help climb over the inevitable dirt and debris found in larger lines.

CORE Mainline System

Part Number	P00005
Capabilities	6" (150mm) and up

Technical Specifications

Camera	ORPHEUS® 2.0 -Pan, Tilt & Zoom
Tractor	T76 Camera Tractor
Reel	KW 305 Portable Reel
Cable	1000' (300m) of high strength cable
Controller	BS3.5 Control Center
Accessories	Large Pneumatic Tires

Package

Accessories

Tools that let you get the most out of your equipment...



TIP: Going the Distance...

The key factor in determining maximum distance is TRACTION. As the unit travels out into the pipeline the weight of the trailing cable becomes greater, occasionally overcoming the tractors TRACTION and causing slippage. You can achieve greater TRACTION by selecting the correct wheel set and/or utilizing additional weights.

TRACTION is obtained by wheels that provide more friction on the pipe surface or knobby tires that provide added grip on debris, pipe joints, etc. TRACTION is enhanced by adding more down force (weight) on those wheels to ensure maximum contact with the surface it is navigating.



Accessory Wheel Sets

Standard Wheels - *soft rubber conforms to pipe walls and get better with age.*

Pneumatic Wheels - *air-filled tires that provide good traction and clearance.*

Granulated Wheels - *rubber composite that is perfect for plastic or relined pipe.*

Treaded Wheels - *hard rubber tires that work well on offset joints and hard debris.*

High Traction Wheels - *metal cast wheels with maximum traction for plastic or relined pipe.*



Oval Pipe Outriggers

If you work in oval pipe - this accessory is a must! The outriggers help keep the tractor in the center of the pipeline and prevent tip overs which can damage equipment.

These systems are available for T76, T86 and PANORAMO[®] 2 Systems. They also work when used with the LISY Lateral Launch attachment.



T66 Tractor Carriage

This unique piece is essential for going long distances with a T66 tractor. The carriage is easy to install and provides added height and weight to the compact and powerful tractor.



Weight Kits

Adding weight to your tractor can dramatically increase traction and pulling distance. Easily one of the most cost-effective and reliable ways to increase your capabilities. **Multiple weights available for all tractor systems!**

Accessories - the Key to Success

When preparing your inspection system or cutter for work in a pipeline, it is important to use the appropriate accessories. Your RapidView IBAK system is designed to be effective and versatile in its standard configuration, but we all understand that certain pipeline conditions require special tools and accessories to be effective. To do this we offer a large selection of accessories that are designed for specific pipeline applications like greasy, large diameter, oval shaped, and debris or water-filled lines. Speak to your RapidView representative to discuss your type of work and what accessories might be right for you.



ARGO Raft System

When you have larger water-filled lines, the ARGO Camera Raft can get the job done. Add one to your system to inspect those large interceptors!

ZSW Light Rings

We offer two different sizes of light rings that produce bright, uniform light that can illuminate larger pipelines. Our unique circular design insures that you have uniform illumination in the pipeline. We do not rely on spot lights that only project forward like the competition.

Manhole Adapter

This unique piece can be used to deploy your camera into underground structures or tanks to inspect structure integrity or incoming pipelines.

Lighting

- Small Light Ring
- Large Light Ring

Extra Weight Kits

- T66 Weight Kit
- T76 Small Weight
- T76 Large Weight
- T86 Large Weight

T66/PANO 150 Wheels

- Granulated (grease) Wheels
- Soft Knobby Tires
- Hard Knobby Tires
- Pneumatic Wheels
- High Traction (steel) Wheels

T76/T86/PANO 2 Wheels

- Granulated (grease) Wheels
- Soft Knobby Tires
- Hard Knobby Tires
- Small Pneumatic Wheels
- Large Pneumatic Wheels
- High Traction (steel) Wheels

T76/T86/PANO 2 Ovoid Pipe Device

- T76 Ovoid Pipe Device
- T86/PANO 2 Ovoid Pipe Device

Cable Drum Accessories

- Upper Deflection Pulley (remote setups)
- Top Manhole Deflection Pulley
- Foot switch for lowering winch

Height and Weight Attachments

- T66 Height & Weight Attachment
- T76/T86/PANO 2 Height & Weight Attachment

Miscellaneous Accessories

- RETRUS Rear-View Camera
- ARGO Raft
- Cable to Camera Connector
- Inclinometer
- Temperature Sensor

Core Accessories

- ✓ Clean Air Pump
- ✓ Downhole Roller

MiniLite Push Cameras

The Professional's Push Camera - The MINILITE® 2.0 Push System

The MiniLite Pushrod System is a compact and versatile platform for inspection of small diameter pipelines. The system works with AxialCam 2, NANO, NANO-L, ORION Zoom, ORION-L Zoom, and POLARIS cameras. The NEW MiniLite features an all-new controller module design. With a bright 10" touch screen and a built-in Windows PC, this controller is ready right out of the box. The new multifunction joystick allows precise control of our pan & tilt cameras.

Dimensions

Size	12.6"x26.75"x24.8"
Weight	40 lbs. (Reel and Controller)
Cable Length (Perfect Pushrod)	250 ft.

Control Console

Monitor	10" High-Resolution Touch Screen
Built-in Computer	Windows 10 operating system
Video Storage/Recording	On internal hard drive, MPEG-4 AVC/H.264
Multifunction Joystick	Built-in
Keyboard	On screen or external option
3D GeoSense Capable	YES (Requires 3D enabled Camera)

Cable Reel

Extension Kits to KW reels	Option available
Length Counter	Standard
Replaceable Pushrod Reel	Standard

Power Source

Rechargeable Batteries	(2) 18V Makita Batteries
18V Charger	Batteries and Charger Included

Perfect Pushrod - Original design with a soft cable on the inside and a strengthening fiber-glass rod, surrounded by a protective PVC sheath.

Magic Pushrod - A high-strength gel rod design that allows for longer pushes and more rigidity.

10" High Definition
Touch Screen and
Multifunction
Joystick

Built-in Windows® PC
Computer and Recording Software

Rechargeable
Battery Power

Exchangeable
Cable Drum
Cassette



MicroLite Push Cameras



Small, capable and easy to use...

The MicroLite Push reel is our small, lightweight push system that includes the features and ergonomic design you expect from IBAK. Designed for use with the AxialCAM 1 (hard mounted) or the removable AxialCAM 2 camera.

The system is very compact and capable with 100 feet (30m) of Perfect Pushrod. Utilizing two rechargeable batteries for hours of operation it is easily carried into work sites. The system was designed to use any of the BP Portable Controllers (BP 1/2/100) which allow you to easily control system functions, record video and capture images. Add IKAS software to log your observations and provide your customers with exceptional reports.

Dimensions

Size	13.7"x 22.4"x 18.5"
Weight	5.7 lbs. (with Controller)
Cable Length (Perfect Pushrod)	100 ft. / 30m

Control Console (BP 1 optional)

Monitor	10" High-Resolution Touch Screen
Built-in Computer	Windows 10 operating system
Video Storage/Recording	On internal hard drive, MPEG-4 AVC/H.264
Keyboard	On screen or external option

Cable Reel

Length Counter	Standard
Replaceable Pushrod Reel	Standard

Power Source

Rechargeable Batteries	(2) 18V Makita Batteries
18V Charger	Batteries and Charger Included

AxialCam 1.0

The hard-mounted AxialCam 1.0 is permanently mounted to 100' of Perfect Pushrod. Capable of inspecting 2" pipelines (50mm), it is our smallest camera. Bright, LED lighting and auto-uprighting features mean you don't have to sacrifice image quality or performance in this small package.



Vehicle and Trailer Conversions

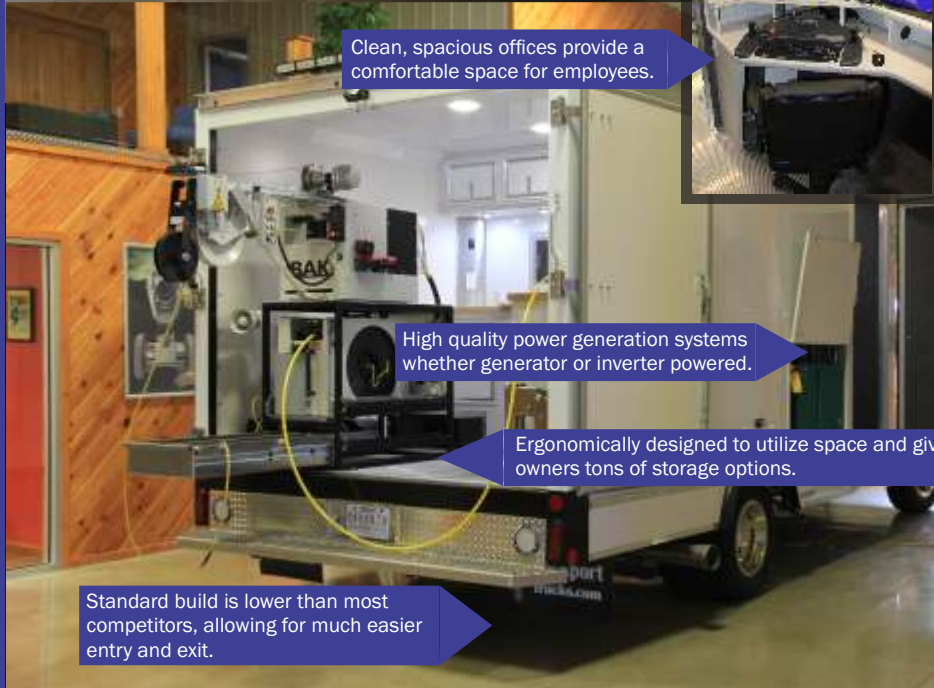


Vehicle Conversions

RapidView converts quality vehicles and trailers for deploying equipment effectively and safely. Each design is created to meet the customer's individual specifications. We convert every major vehicle brand and model. With a focus on ergonomic, user-friendly interiors, our conversions are hand-built with superior craftsmanship and durability.

Our staff of professionals brings many years of actual pipeline inspection experience, so you can rest assured that the design will work for your application.

Please contact your RapidView representative for more information on vehicle models and conversion possibilities!



Clean, spacious offices provide a comfortable space for employees.

High quality power generation systems whether generator or inverter powered.

Ergonomically designed to utilize space and give owners tons of storage options.

Standard build is lower than most competitors, allowing for much easier entry and exit.



Interior and exterior walls use reinforced fiberglass for durability and easy cleaning. Trim is aluminum for corrosion resistance and durability.



Hard maple counter-tops hold up to hard use and maintain appearance.

We only use high quality door latches and industrial piano-style hinges.

We use the highest quality components including Whelan LED lighting and Snap-On tool cabinets.

Product Matrix

 AXIALCAM® 1.0 2.0	 NANO®	 NANO® - L	 POLARIS®	 ORION®	 ORION® - L	 ORPHEUS Lite®	 ORPHEUS® 2.0
 CERBERUS®	 T66®	 T76®	 T86®	 T66 HD®	 T76 HD®	 T86 HD®	 ORPHEUS HD®
 MICROLITE®	 MINLITE 2.0®	 KW 206®	 KW 306®	 KW 305®	 KW 505®	 KW 505 HD®	 LISY 3.2 HD®
 BP 1/2/100®	 BP 10®	 BS 3.5®	 BS 5®	 LISY 3.2®	 BS7-R®	 MICROGATOR® 2.0	 IKAS® Evolution
 PANORAMO 2®	 PANORAMO 150®	 PANORAMO SI®	 3D GEOSENSE®	 ATV	 TRAILER	 CARGO VAN	 CARGO BOX

If you have questions concerning system configuration, please contact your RapidView representative!



Quality
makes the
DIFFERENCE

RapidView IBAK North America
1828 W. Olson Rd. | Rochester, IN 46975 | 800-656-4225 | www.rapidview.com