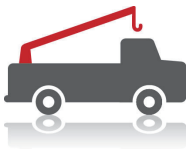
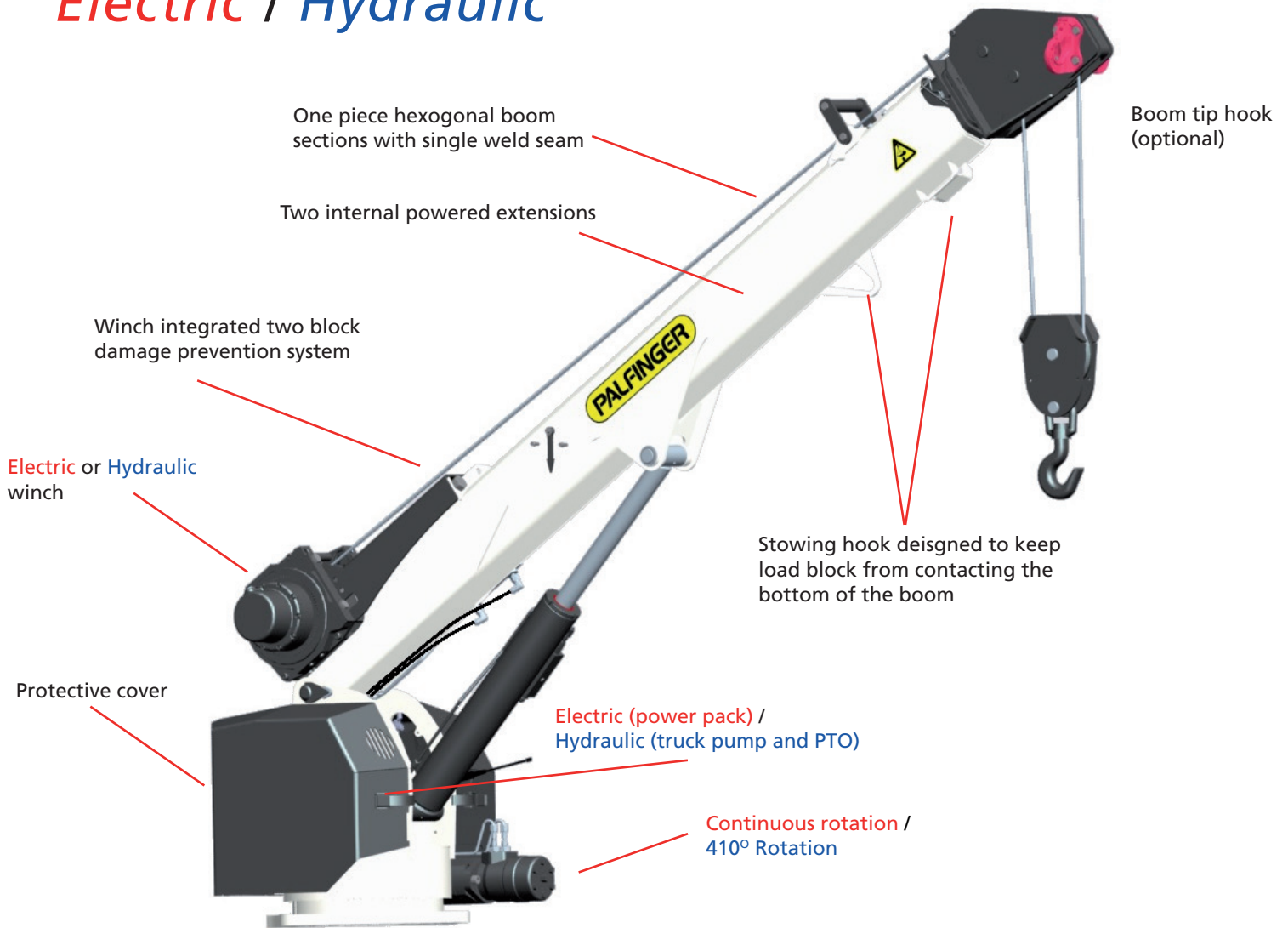


PSC 4025

PALFINGER Service Crane

PALFINGER

Electric / Hydraulic



The service crane solution

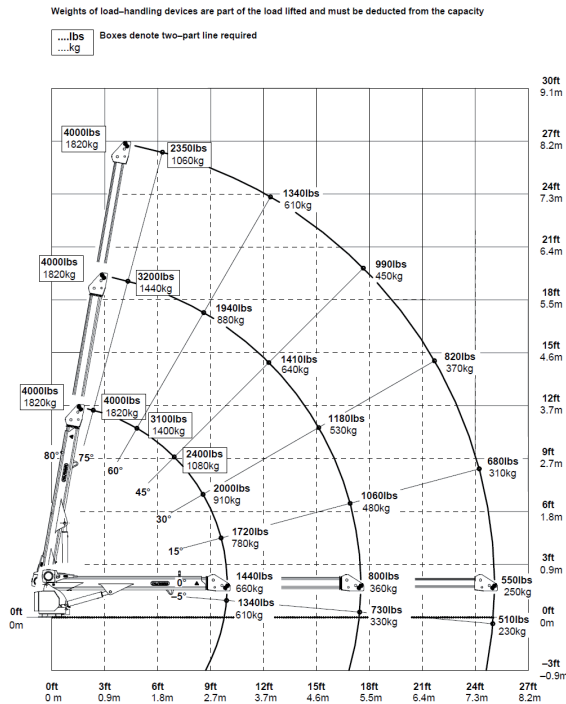
The PSC 4025 was designed especially for crane body vehicles, allowing for maximum utilization of body compartment space and rear-bumper access to the bed. PALFINGER service cranes offer superior lift-to-weight ratios, while utilizing the full 25ft of hydraulic reach with its self centering hexagonal booms. North American manufacturing and components including SAE hoses with JIC fittings, standard wireless remote control in conjunction with an industry leading 24-month warranty on all major components guarantee years of worry free usage.

Combining North American manufacturing, service and support with European technology

Omaha Standard PALFINGER
3501 S. 11th St.
Council Bluffs, IA 51501
Phone: 1-712-328-7444
Toll-Free: 1-800-279-2201
Fax: 1-800-568-7444
www.palfinger.com

PSC 4025
10.12

PSC 4025 Electric / Hydraulic Service Crane



Hydraulic system

- 12 Volt DC Power Supply
- **12V Power Pack / PTO and Pump Chassis Mounted**
- 2.800psi (193bar) System
- **2.2 GPM (8.8 Liter/min.) / 3.5 GPM (13.2 Liter/min.)**
- Nonintegrated load-holding valves on all cylinders
- Electronic overload protection system
- **Proportional Crane Valve (optional)**
- **Proportional Crane Valve (standard)**

Rotation system

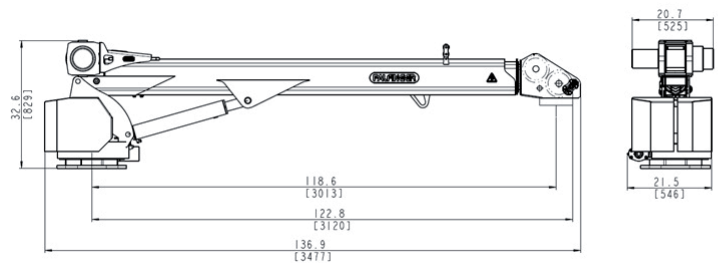
- Slewing torque 2,130 ft. lbs. (2.89 kNm)
- **Continuous Rotation / 410° Rotation**

Control system

- Wireless Remote control unit
- Integrated E-stop button
- Manual valve activation capability

Technical specifications

- Max lifting moment
 - 18,500 ft. lbs. (2.5mt) @ 0°
 - 23,235 ft. lbs. (3.2mt) @ 26°
- Lifting height from base of crane 25'6" (7.8m)
- Power Extension 25' (7.6m)
- Crane weight base version **800lbs. (364kg) / 780 lbs. (355kg)**



Winch

- Cable speed **19.6 ft./min (6.0 m/min.) / 21.0 ft./min (6.4 m/min.)**
- Max winch force single line 2,000 lbs. (907 kg)
- Max winch force double line 4,000 lbs. (1814 kg)
- 80ft. (24.4m) of 1/4" (6.4mm) Galvanized Aircraft Cable
- **Planetary electric winch / Planetary hydraulic winch**
- Two-Block Damage Prevention System

Chassis specifications

- Chassis style Conventional cab
- Recommended GVWR 10,500 lbs.
- Base Plate Dimension 15"X 15" (381mm x 381mm)
- Hole Pattern 12" X 12" (305mm x 305mm)
 - 1"-8 UNC Thread

E-coat

- Crane components receive a submerged electrocoat primer and topcoat finish paint for maximum durability and finish.
- E-coat is environment-friendly, recyclable, and economical with the paint applied with a precise thickness over the entire product so no paint is wasted.

