

20  
20



**USTarp**  
Covering America®

**RECYCLING & REFUSE  
TARP SYSTEMS**



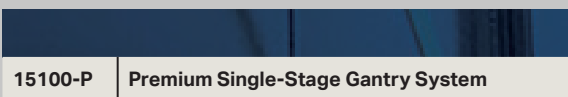
**800-249-0297 | USTARP.COM**

# RECYCLING & REFUSE TARP SYSTEM



## Premium Single-Stage Hydraulic Gantry System

Customizable to meet your needs, the new lightweight, durable Premium Single-Stage Gantry System is a safe and reliable containment system, designed to straddle over truck or trailer frames for ease of installation. Our Premium system includes frame mounted Polished Aluminum Arms, Hydraulic Gear Motor, Wireless Remote Kit, Polished Aluminum Open Top Housing, and a Work Light Kit.



15100-P Premium Single-Stage Gantry System

### • PREMIUM SINGLE-STAGE GANTRY BASE SYSTEM •

- **58" Tall Gantry Base, extends 36" Vertically**
- **PTO Hydraulic Operation with Wireless Remote and Manual Levers**
- **Hydraulic Gear Motor**
- **Premium Aluminum Arm Kit with Frame Mounts**
- **Premium Aluminum Open Top Housing with Work Light Kit**

## Heavy Duty Steel Gantry System

US Tarp's Gantry System offers a customizable design for the Recycling and Refuse Industry. The Heavy Duty Steel Powder-Coated frame is available in a Stationary, Single-Stage, and Two-Stage. The base kit features US Tarp's easy to operate Spring Return System. All US Tarp Gantry Systems can be upgraded to an electric over hydraulic application with any of the arm kits pictured below.

15101	Stationary Telescopic Gantry Unit Base System
15100	Single-Stage Hydraulic Cylinder Gantry Base System
14126	Two-Stage Hydraulic Cylinder Telescopic Gantry Base System



### • STATIONARY GANTRY UNIT BASE SYSTEM •

- Standard Height 77" Tall Gantry Base
- Spring Return Tarp Axle
- Open Top Aluminum Housing

### • SINGLE-STAGE HYDRAULIC CYLINDER GANTRY BASE SYSTEM •






- 48" Tall Aluminum Housing, extends 36" Vertically
- Spring Return Tarp Axle
- Open Top Aluminum Housing



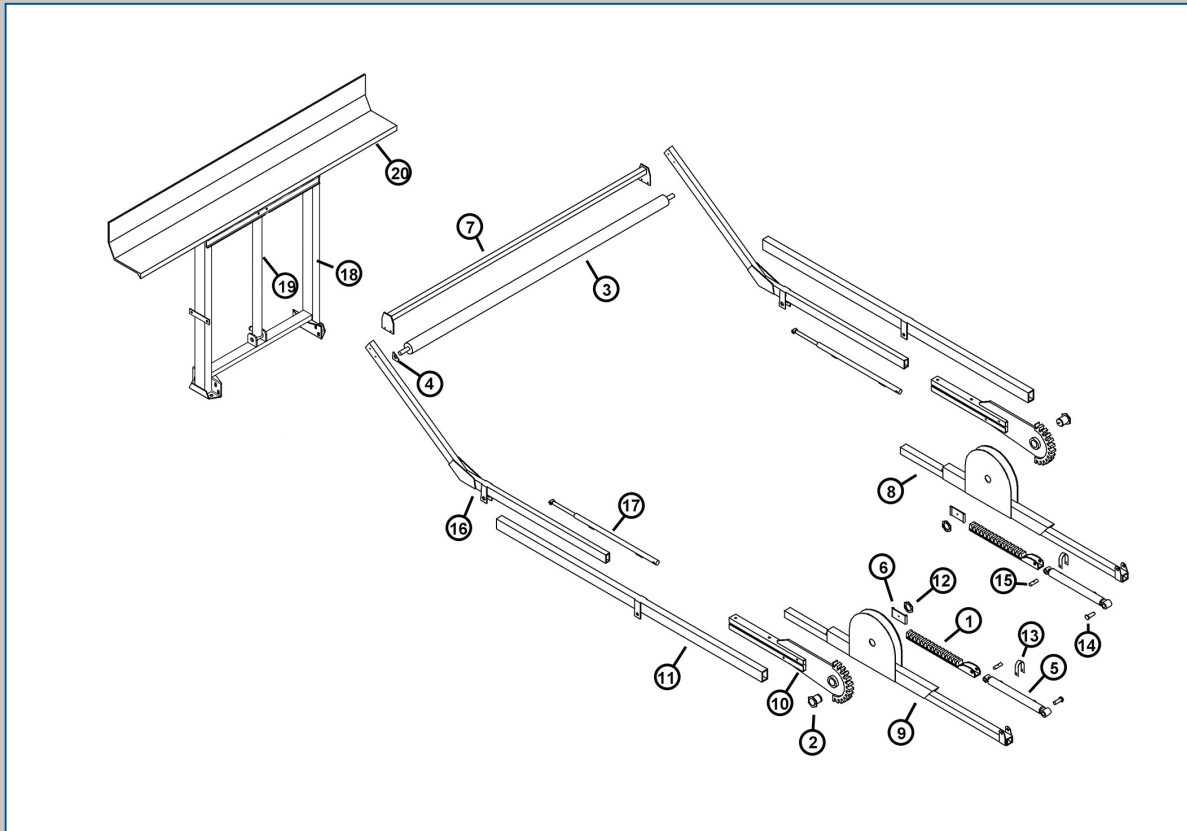
### • TWO-STAGE HYDRAULIC CYLINDER TELESCOPIC GANTRY BASE SYSTEM •

- 64" Tall Gantry Base, extends 88" Vertically
- Spring Return Tarp Axle
- Premium Aluminum Open Top Housing

### Tarp System Options

Gantry Mount Light Kit	Wireless Remote	Electric 4 Spring Steel Arms, Frame Mounted, Up to 24'	Electric 4 Spring Aluminum Arms, Frame Mounted Up to 24'	Electric 7 Spring Steel Arms, Fender Mounted Up to 26'
				
Part #15514	Add -WL to Part #	Add -ST4 to Part #	Add -AL4 to Part #	Add -ST7 to Part #

## Rack & Pinion System and Replacement Parts

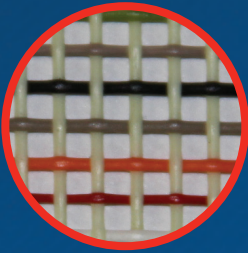


Ref.	Part #	QTY*	Description	Ref.	Part #	QTY*	Description
1	A3868B	2	Rack Gear Assembly	13	HR4731	2	Cylinder Hold Down Strap
2	A3881	2	Arm Pivot Pin w/Grease Fitting	14	A3883	2	Cylinder Pin - Long
3	H7002C	1	Spring Roller Assembly	15	D18836	2	Cylinder Pin
4	HR4788	1	Pawl for Roller Assembly	16	HR4751	2	Arm Extension
5	HR4719	2	16" Stroke Cylinder	17	HR4752	2	36" Stroke Telescopic Arm Cylinder
6	HR4728	2	Swivel Hose Clamp Assembly	18	HR4511	1	Telescopic Gantry Leg Assembly
7	HR4753	1	Stablizer Bar	18	HR4610	1	Fixed Leg Gantry Tube Set
8	A4006A-1	1	Mounting Bracket Assembly, Right - Passenger Side	19	HR4520	1	36" Stroke Gantry Cylinder
9	A4005A-1	1	Mounting Bracket Assembly, Left - Drivers Side	20	HR4505-2	1	Roll Base for Telescopic Gantry Assembly
10	HR4760	2	Base Arm Gear Assembly	20	HR4614	1	Roll Rest for Fixed Leg Gantry Assembly
11	HR4750	2	Base Arm, 93-1/4"	-	H7040-1	1	Flow Divider/Combiner
12	HR4785	2	Castle Nut for Pivot Pin				

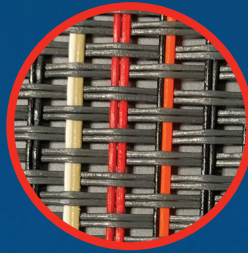
\*Quantity required

# TARP OPTIONS

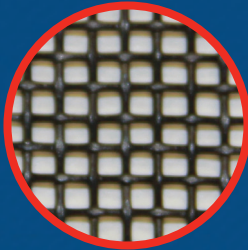
## Mesh Choices



**MULTI COLOR MESH**



**MONSTER MESH**



**BLACK MESH**



**ARMOR MESH**

**• 8' X 28' MESH •** (Replaces HR4616)

Multi Color Mesh



Part #96-28-MC

Black Mesh



Part #96-28-HDBM

Monster Mesh



Part #96-28-MM

Armor Mesh



Part #96-28-AM

**• 9' 6" X 28' MESH •** (Replaces HR4759) Each of the Mesh below includes a Shock Cord and 6' Vinyl Reinforcements.

Multi Color Mesh



Part #114-28-MC-R

Black Mesh



Part #114-28-HDBM-R

Monster Mesh



Part #114-28-MM-R

Armor Mesh



Part #144-28-AM-R



The logo features the text 'US Tarp' in a bold, sans-serif font. 'US' is white, and 'Tarp' is red with a white outline. Below it, the tagline 'Covering America' is written in a smaller, white, sans-serif font. A small registered trademark symbol (®) is located at the end of the tagline. The background of the logo is a dark blue rectangle with a stylized American flag pattern of stars and stripes.

**US Tarp**  
Covering America®

**phone:**  
**800-249-0297**  
**fax:**  
**269-639-3015**  
**email:**  
**Sales@USTarp.com**

**WE'VE GOT YOU COVERED.**

**US Tarp® • PO Box 935 • South Haven, MI 49090**

All Manufacturers' names, numbers, symbols, and descriptions are used for reference purposes only, and it does not imply that any part listed is the product of these manufacturers.