

## HARSH HOTLINE

IF YOU CANNOT FIND THE EXACT SPECIFICATIONS TO MATCH YOUR APPLICATION, CALL 800-227-1702.

WE WILL RUN YOUR SPECS THROUGH OUR EXCLUSIVE **H.A.P.** (HARSH APPLICATION PROGRAM) AND SEND YOU A COMPUTER PRINTOUT VIA FAX OR EMAIL

E-mail: [harsh@harshenviro.com](mailto:harsh@harshenviro.com)  
Web: [www.harshenviro.com](http://www.harshenviro.com)

# RL-A05, RL-B10, RL-C20

DOUBLE ACTING

*The First . . .  
. . . And Still the Best*

**RL-A05 CAPACITY IN TONS**

BOX LENGTH (FEET)	CAB TO AXLE (INCHES)	OVER-HANG * (INCHES)	DUMP ANGLE			
			MOUNTING LENGTH			
			40°	45°	50°	55°
8	60	6	51"	45"	41"	38"
9	60	18	2.5	2.2	2.0	1.8
9	72	6	2.9	2.5	2.3	2.1
9.5	60	24	2.2	1.9	1.7	1.6
9.5	72	12	3.2	2.8	2.5	2.3
10	60	30	2.3	2.0	1.8	1.7
10	72	18	3.5	3.1	2.3	2.6
10	84	6	2.5	2.2	1.7	1.8
11	72	30	1.9	1.7	1.5	1.4
11	84	18	2.9	2.5	2.4	2.1
12	84	30	2.2	1.9	1.7	1.6
12	84	30	2.5	2.2	2.0	1.8

**RL-B10 CAPACITY IN TONS**

BOX LENGTH (FEET)	CAB TO AXLE (INCHES)	OVER-HANG * (INCHES)	DUMP ANGLE			
			MOUNTING LENGTH			
			40°	45°	50°	55°
8	60	6	69"	61"	55"	51"
9	60	18	8.6	7.5	6.8	6.3
9	72	6	10.0	8.8	7.9	7.4
9.5	60	24	7.5	6.6	5.9	5.5
9.5	72	12	10.9	9.6	8.7	8.0
10	60	30	8.0	7.0	6.3	5.9
10	72	18	12.0	10.6	9.5	8.8
10	84	6	8.6	7.5	6.8	6.3
11	72	30	6.6	5.9	5.3	4.9
11	84	18	10.0	8.8	7.9	7.4
12	84	30	7.5	6.6	5.9	5.5
12	84	30	8.6	7.5	6.8	6.3

**RL-C20 CAPACITY IN TONS**

BOX LENGTH (FEET)	CAB TO AXLE (INCHES)	OVER-HANG * (INCHES)	DUMP ANGLE			
			MOUNTING LENGTH			
			40°	45°	50°	55°
8	60	6	83"	74"	67"	61"
9	60	18	11.0	9.8	8.9	8.1
9	72	6	12.9	11.5	10.4	9.4
9.5	60	24	9.6	8.6	7.8	7.1
9.5	72	12	14.1	12.5	11.3	10.3
10	60	30	10.3	9.2	8.3	7.5
10	72	18	15.5	13.8	12.5	11.3
10	84	6	11.0	9.8	8.9	8.1
11	72	30	8.6	7.6	6.9	6.3
11	84	18	12.9	11.5	10.4	9.4
12	84	30	9.6	8.6	7.8	7.1
12	102	12	11.0	9.8	8.9	8.1
13	102	24	7.7	6.9	6.2	5.6
13	102	24	8.6	7.6	6.9	6.3

NOTE: CAPACITY IN TONS AT 2500 PSI (172 bar)

(1) Overhang based on 32" from center line of tail hinge pin to center line of truck axle with 2" clearance between cab and box.

(2) These capacities are for the body and payload together with an evenly distributed, non-diminishing, solid load for the full dump cycle. The center of gravity of the load is assumed to be at the center of the body.

SPECIFICATIONS SUBJECT TO CHANGE WITHOUT NOTICE

### NOW AVAILABLE

Sub-frames for RL-B10 and RL-C20. Includes mounts and tail hinge.  
**SOLD WITH HOIST ONLY**

### THE BEST TIPPING GEAR EVER, MADE EVEN BETTER!

To back up the best warranty in the industry, HARSH® has subjected each Rigid Lift® Main Frame design to a tough 20,000 cycle test. ⅓ of this test simulated maximum off center load conditions. The Rigid Lift® performed without main frame failure and very little wear to moving parts.

Many years of customer use and testing in the field is positive proof of excellence and durability of the HARSH® Rigid Lift® Tipping gear.

*7 Year Limited  
Frame Warranty*

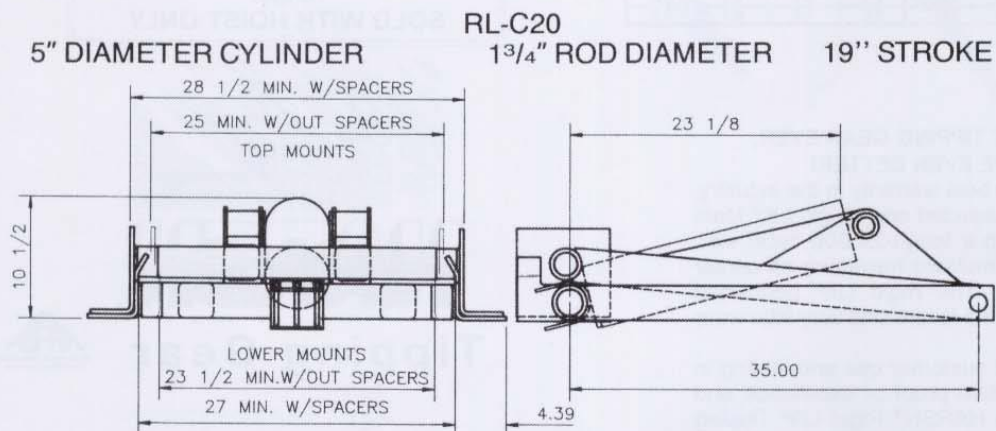
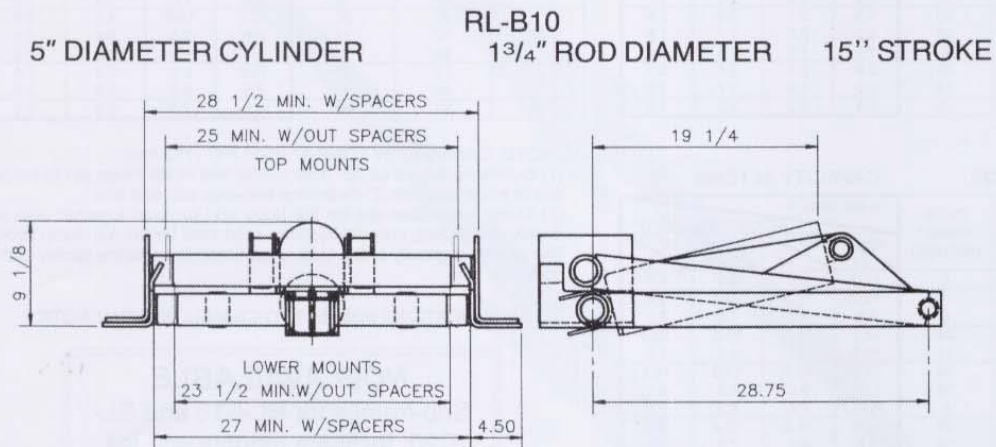
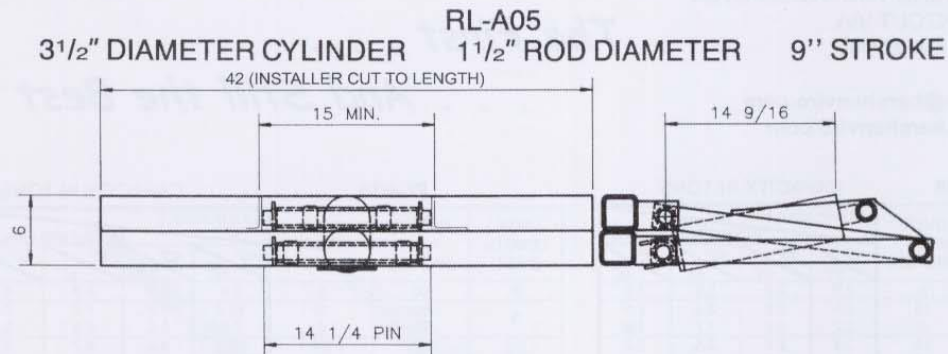
**HARSH**

Tipping Gear



HARSH INTERNATIONAL, INC. · 600 OAK AVE. · EATON, CO. 80615  
TEL 970-454-2291 · 800-227-1702 · FAX 970-454-3491 · Email: [harsh@harshenviro.com](mailto:harsh@harshenviro.com)

# RL-A05, RL-B10, RL-C20





### HARSH HOTLINE

IF YOU CANNOT FIND THE EXACT SPECIFICATIONS THAT MATCH YOUR APPLICATION, JUST CALL **1-800-227-1702** AND WE WILL RUN YOUR SPEC'S THROUGH OUR EXCLUSIVE **H.A.P.** (HARSH APPLICATION PROGRAM) AND FAX YOU A COMPUTER PRINTOUT.

E-mail: [harsh@harshenviro.com](mailto:harsh@harshenviro.com)

Web: [www.harshenviro.com](http://www.harshenviro.com)

## RL-E50

DOUBLE ACTING

### CAPACITY IN TONS

BOX LENGTH (FEET)	CAB TO AXLE (INCHES)	OVER-HANG (INCHES)	DUMP ANGLE			
			MOUNTING LENGTH			
			40° 103"	45° 92"	50° 83"	55° 76"
14	102	36	20.3	19.1	17.8	16.3
	108	30	17.5	16.3	15.5	14.5
	114	24	15.3	14.3	13.5	12.9
	120	18	13.6	12.7	11.9	11.4
16	126	36	15.3	14.3	13.5	12.9
	132	30	13.6	12.7	11.9	11.4
	144	18	11.2	10.3	9.7	9.2
	150	12	10.3	9.5	8.8	8.4
18	150	36	12.3	11.4	10.7	10.2
	156	30	11.2	10.3	9.7	9.2
	168	18	9.5	8.7	8.1	7.7
	174	12	8.8	8.1	7.5	7.1

### THE BEST TIPPING GEAR EVER, MADE EVEN BETTER!

To back-up the best warranty in the industry, HARSH® has subjected each Rigid Lift® Main Frame design to a tough 20,000 cycle test (1/3 of this test simulated maximum off center load conditions). The Rigid Lift® performed without main frame failure and very little wear to moving parts.

Many years of customer use and testing in the field is positive proof of excellence and durability of the HARSH® Rigid Lift® Tipping gear.

### DUMP BODY APPLICATIONS

8	-	6	-	-	20.4	18.6
	-	12	-	-	23.8	21.8
10	-	6	-	-	15.5	14.5
	-	12	-	-	17.8	16.3

### NOTE: CAPACITY IN TONS AT 3300PSI (228 bar)

(1) Overhang based on 32" from center line of tail hinge pin to center line of truck axle with 2" clearance between cab and box.

(2) These capacities are for the body and payload together with an evenly distributed, nondiminishing, solid load for the full dump cycle. The center of gravity of the load is assumed to be at the center of the body.

SPECIFICATIONS ARE SUBJECT TO CHANGE WITHOUT NOTICE.

- 7 year limited warranty\*
- World wide recognition
- Industry leader for over 40 years
- Built and tested to last longer
- Featuring dynamic stability
- Minimal weight
- High polished hard chrome cylinders
- Fast Tipping cycle
- 3300 PSI operating pressure (228 bar)
- Ease of maintenance
- Classified for both dump body (NTEA Class 50) and conversion hoist (NTEA Class E) use.

\* See our Harsh® Rigid Lift® Hoist 7 year limited warranty for details.

*7 Year Limited  
Frame Warranty*

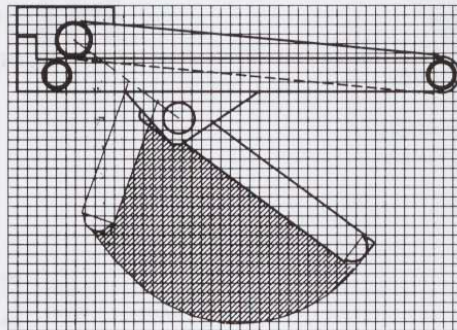
**HARSH**  
Tipping Gear



HARSH INTERNATIONAL, INC., 600 Oak Ave., Eaton, CO 80615. TEL 970-454-2291  
1-800-227-1702 FAX 970-454-3491

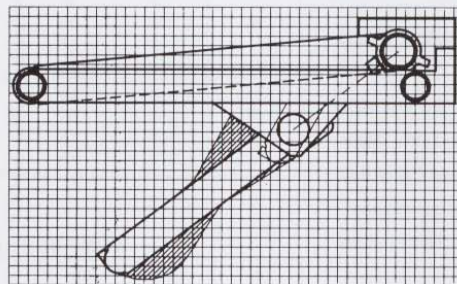
## REVERSE MOUNT

← CAB →

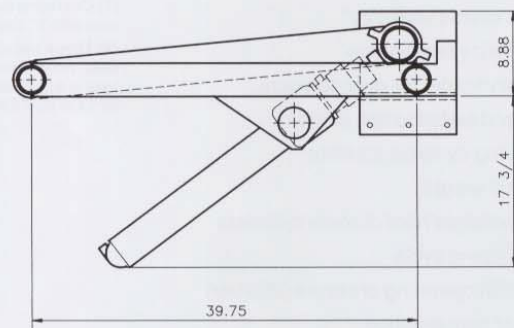
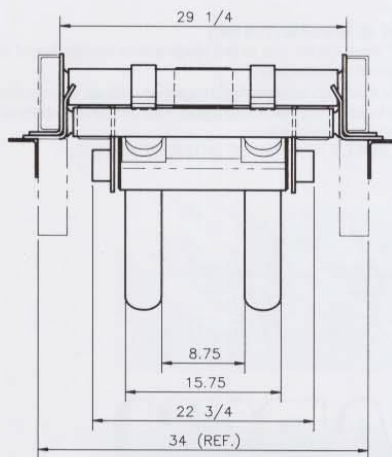


## STANDARD MOUNT

← CAB →



Cylinder Path: 1 square = 1 inch



# RL-E55

DOUBLE ACTING

## HARSH HOTLINE

IF YOU CANNOT FIND THE EXACT  
SPECIFICATIONS THAT MATCH YOUR  
APPLICATION, JUST CALL 1-800-227-1702

AND WE WILL RUN YOUR SPEC'S  
THROUGH OUR EXCLUSIVE  
**H.A.P.** (HARSH APPLICATION PROGRAM)  
AND FAX YOU A  
COMPUTER PRINTOUT.

E-mail: [harsh@harshenviro.com](mailto:harsh@harshenviro.com)  
Web: [www.harshenviro.com](http://www.harshenviro.com)

## THE BEST TIPPING GEAR EVER, MADE EVEN BETTER!

To back-up the best warranty in the industry, HARSH® has subjected each Rigid Lift® Main Frame design to a tough 20,000 cycle test (<sup>2</sup>/<sub>3</sub> of this test simulated maximum off center load conditions). The Rigid Lift® performed without main frame failure and very little wear to moving parts.

Many years of customer use and testing in the field is positive proof of excellence and durability of the HARSH® Rigid Lift® Tipping gear.

- World wide recognition
- Industry leader for over 40 years
- Built and tested to last longer
- Featuring dynamic stability
- Minimal weight
- High polished hard chrome cylinders
- Fast Tipping cycle
- 3300 PSI operating pressure (228 bar)
- Ease of maintenance
- Classified for both dump body  
(NTEA Class 50) and conversion hoist  
(NTEA Class E) use.

CAPACITY IN TONS

BOX LENGTH (FEET)	CAB TO AXLE (INCHES)	OVER- HANG (INCHES)	DUMP ANGLE			
			MOUNTING LENGTH			
			40° 112"	45° 100"	50° 91"	55° 83"
14	102	36	23.7	21.2	19.3	17.6
	108	30	21.1	18.8	17.1	15.6
	114	24	19.0	16.9	15.4	14.0
	120	18	17.2	15.4	14.0	12.8
16	126	36	19.0	16.9	15.4	14.0
	132	30	17.2	15.4	14.0	12.8
	144	18	14.6	13.0	11.8	10.8
	150	12	13.5	12.1	11.0	10.0
18	150	36	15.8	14.1	12.8	11.7
	156	30	14.6	13.0	11.8	10.8
	168	18	12.6	11.3	10.3	9.3
	174	12	11.8	10.6	9.6	8.8

DUMP BODY APPLICATIONS

10	6	-	-	17.1	15.6
	12	-	-	19.3	17.6
12	6	-	-	14.0	12.8
	12	-	-	15.4	14.0

### NOTE: CAPACITY IN TONS AT 3300 PSI (228 bar)

(1) Overhang based on 32" from center line of tail hinge pin to center line of truck axle with 2" clearance between cab and box.

(2) These capacities are for the body and payload together with an evenly distributed, nondiminishing, solid load for the full dump cycle. The center of gravity of the load is assumed to be at the center of the body.

SPECIFICATIONS ARE SUBJECT TO CHANGE WITHOUT NOTICE.



**HARSH**  
Tipping Gear



HARSH INTERNATIONAL, INC., 600 Oak Ave., Eaton, CO 80615.  
1-800-227-1702 FAX 970-454-3491

TEL 970-454-2291

RL-E55 RIGID LIFT® SPEC SHEET



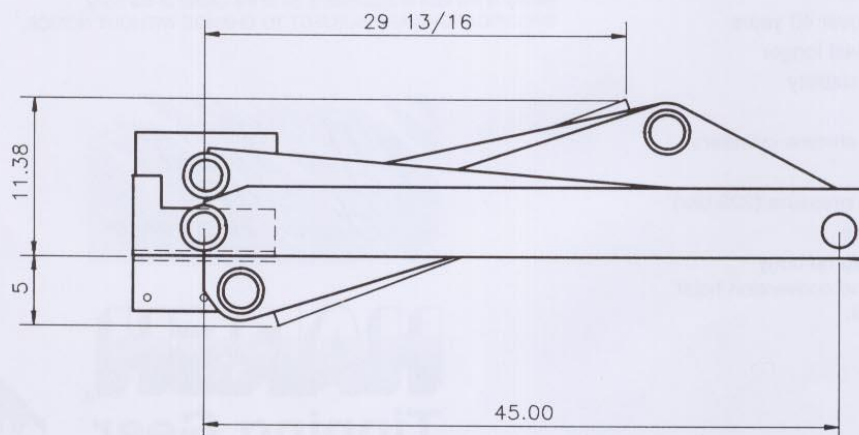
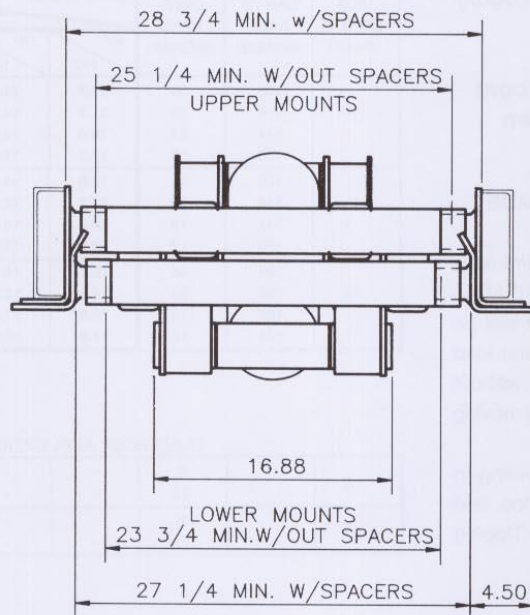
# RL-E55

DOUBLE ACTING

6" I.D. Cylinder

2 1/2" Rod Diameter

23 1/2" Stroke



# RL-F60

DOUBLE ACTING

## HARSH HOTLINE

IF YOU CANNOT FIND THE EXACT  
SPECIFICATIONS THAT MATCH YOUR  
APPLICATION, JUST CALL 1-800-227-1702  
AND WE WILL RUN YOUR SPEC'S

THROUGH OUR EXCLUSIVE  
**H.A.P.** (HARSH APPLICATION PROGRAM)  
AND FAX YOU A  
COMPUTER PRINTOUT.

E-mail: [harsh@harshenviro.com](mailto:harsh@harshenviro.com)

Web: [www.harshenviro.com](http://www.harshenviro.com)

## THE BEST TIPPING GEAR EVER, MADE EVEN BETTER!

To back-up the best warranty in the industry, HARSH® has subjected each Rigid Lift® Main Frame design to a tough 20,000 cycle test (2/3 of this test simulated maximum off center load conditions). The Rigid Lift® performed without main frame failure and very little wear to moving parts.

Many years of customer use and testing in the field is positive proof of excellence and durability of the HARSH® Rigid Lift® Tipping gear.

- 7 year limited warranty\*
- World wide recognition
- Industry leader for over 40 years
- Built and tested to last longer
- Featuring dynamic stability
- Minimal weight
- High polished hard chrome cylinders
- Fast Tipping cycle
- 3300 PSI operating pressure (228 bar)
- Ease of maintenance
- Classified for both dump body (NTEA Class 60) and conversion hoist (NTEA Class F) use.

\*See our Harsh® Rigid Lift® Hoist  
7 year limited warranty for details.

CAPACITY IN TONS

BOX LENGTH (FEET)	CAB TO AXLE (INCHES)	OVER- HANG (INCHES)	DUMP ANGLE			
			MOUNTING LENGTH			
			40° 114"	45° 102"	50° 92"	55° 84"
14	102	36	21.8	25.1	22.6	20.6
	108	30	25.0	22.3	20.1	18.3
	114	24	22.5	20.1	18.0	16.4
	120	18	20.4	18.2	15.0	14.9
16	126	36	22.5	20.1	18.0	16.4
	132	30	20.4	18.2	16.4	14.9
	144	18	17.3	15.4	13.9	12.6
	150	12	16.0	14.3	12.9	11.7
18	150	36	18.7	16.7	15.0	13.7
	156	30	17.3	15.4	13.9	12.6
	168	18	15.0	13.4	12.0	10.9
	174	12	14.0	12.5	11.3	10.3

DUMP BODY APPLICATIONS

10	-	6	-	-	20.1	18.3
	-	12	-	-	22.6	20.6
12	-	6	-	-	16.4	14.9
	-	12	-	-	18.0	16.4

### NOTE: CAPACITY IN TONS AT 3300 PSI (228 bar)

(1) Overhang based on 32" from center line of tail hinge pin to center line of truck axle with 2" clearance between cab and box.

(2) These capacities are for the body and payload together with an evenly distributed, nondiminishing, solid load for the full dump cycle. The center of gravity of the load is assumed to be at the center of the body.

SPECIFICATIONS ARE SUBJECT TO CHANGE WITHOUT NOTICE.

*7 Year Limited  
Frame Warranty*

**HARSH**  
Tipping Gear



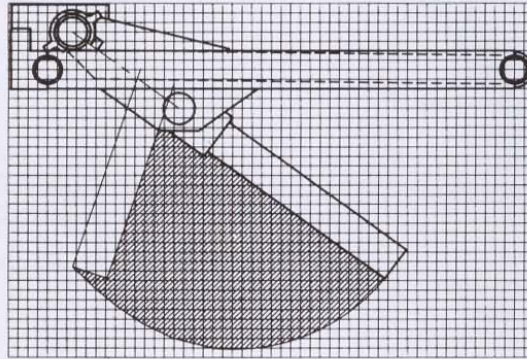
HARSH INTERNATIONAL, INC., 600 Oak Ave., Eaton, CO 80615.  
1-800-227-1702 FAX 970-454-3491

TEL 970-454-2291

RL-F60 RIGID LIFT® SPEC SHEET

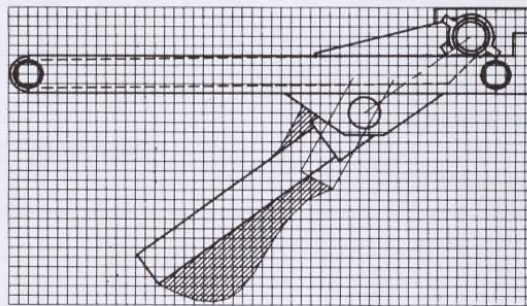
## REVERSE MOUNT

← CAB →

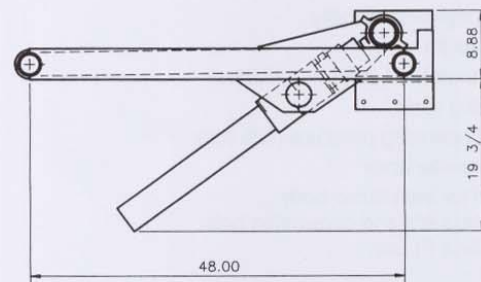
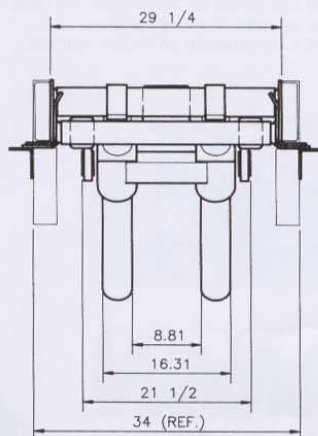


## STANDARD MOUNT

← CAB →



Cylinder Path: 1 square = 1 inch





# RL-G70

DOUBLE ACTING

## HARSH HOTLINE

IF YOU CANNOT FIND THE EXACT SPECIFICATIONS THAT MATCH YOUR APPLICATION, JUST CALL **1-800-227-1702** AND WE WILL RUN YOUR SPEC'S THROUGH OUR **EXCLUSIVE H.A.P.** (HARSH APPLICATION PROGRAM) AND FAX YOU A COMPUTER PRINTOUT.

## CAPACITY IN TONS

BOX LENGTH (FEET)	CAB TO AXLE (INCHES)	OVER-HANG (INCHES)	CAB TO TRUNNION (INCHES)	DUMP ANGLE			
				MOUNTING LENGTH			
				40° 129"	45° 115"	50° 104"	55° 95"
16	132	30	120	26.0	23.2	21.0	19.1
	138	24	126	23.9	21.3	19.2	17.5
	144	18	132	22.0	19.6	17.7	16.2
18	150	36	138	23.9	21.3	19.2	17.5
	156	30	144	22.0	19.6	17.7	16.2
	162	24	150	20.5	18.2	16.5	15.0
20	174	36	162	20.5	18.2	16.5	15.0
	-	30	168	19.1	17.0	15.4	14.0
	-	24	162	20.5	18.2	16.5	15.0
	-	18	180	16.8	15.0	13.6	12.4

## THE BEST TIPPING GEAR EVER, MADE EVEN BETTER!

To back-up the best warranty in the industry, HARSH® has subjected each Rigid Lift® Main Frame design to a tough 20,000 cycle test (1/3 of this test simulated maximum off center load conditions). The Rigid Lift® performed without main frame failure and very little wear to moving parts.

Many years of customer use and testing in the field is positive proof of excellence and durability of the HARSH® Rigid Lift® Tipping gear.

## DUMP BODY APPLICATIONS

10	6 12	- -	25.6 28.9	23.4 26.3
12	6 12	- -	21.0 23.1	19.1 21.1

- 7 year limited warranty\*
- World wide recognition
- Industry leader for over 40 years
- Built and tested to last longer
- Featuring dynamic stability
- Minimal weight
- High polished hard chrome cylinders
- Fast Tipping cycle
- 3300 PSI operating pressure (228 bar)
- Ease of maintenance
- Classified for both dump body (NTEA Class 70) and conversion hoist (NTEA Class G) use.
- \* See our Harsh® Rigid Lift® Hoist 7 year limited warranty for details.

## NOTE: CAPACITY IN TONS AT 3300PSI (228 bar)

(1) Overhang based on 32" from center line of tail hinge pin to center line of truck axle on single axle trucks, and 44" from center line of tail hinge pin to center line of trunnion on tandem axle trucks, with 2" clearance between cab and box.

(2) These capacities are for the body and payload together with an evenly distributed, nondiminishing, solid load for the full dump cycle. The center of gravity of the load is assumed to be at the center of the body.

SPECIFICATIONS ARE SUBJECT TO CHANGE WITHOUT NOTICE.



# HARSH

## Tipping Gear

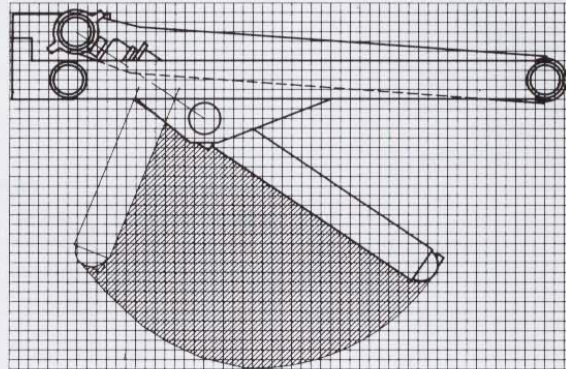


HARSH INTERNATIONAL, INC., 600 Oak Ave., Eaton, CO 80615. TEL 970-454-2291  
1-800-227-1702 FAX 970-454-3491

RL-G70 RIGID LIFT® SPEC SHEET

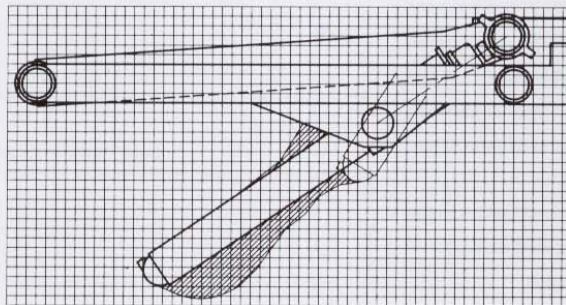
## REVERSE MOUNT

← CAB →

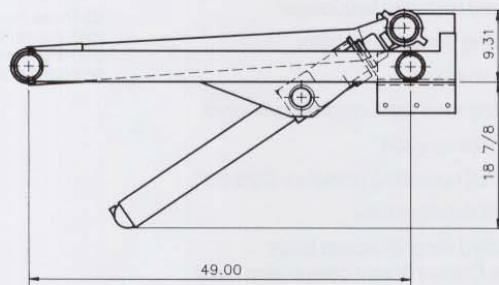
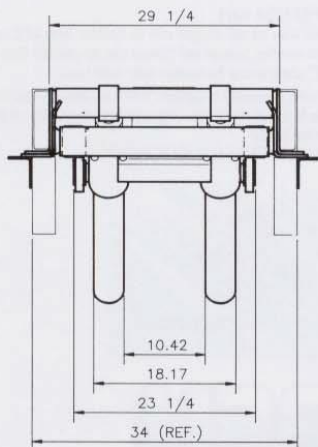


## STANDARD MOUNT

← CAB →



Cylinder Path: 1 square = 1 inch





# RL-H80

DOUBLE ACTING

## HARSH HOTLINE

IF YOU CANNOT FIND THE EXACT SPECIFICATIONS THAT MATCH YOUR APPLICATION, JUST CALL **1-800-227-1702** AND WE WILL RUN YOUR SPEC'S THROUGH OUR EXCLUSIVE **H.A.P.** (HARSH APPLICATION PROGRAM) AND FAX YOU A COMPUTER PRINTOUT.

## THE BEST TIPPING GEAR EVER, MADE EVEN BETTER!

To back-up the best warranty in the industry, HARSH® has subjected each Rigid Lift® Main Frame design to a tough 20,000 cycle test (1/3 of this test simulated maximum off center load conditions). The Rigid Lift® performed without main frame failure and very little wear to moving parts.

Many years of customer use and testing in the field is positive proof of excellence and durability of the HARSH® Rigid Lift® Tipping gear.

- 7 year limited warranty\*
- World wide recognition
- Industry leader for over 40 years
- Built and tested to last longer
- Featuring dynamic stability
- Minimal weight
- High polished hard chrome cylinders
- Fast Tipping cycle
- 3300 PSI operating pressure (228 bar)
- Ease of maintenance
- Classified for both dump body (NTEA Class 80) and conversion hoist (NTEA Class H) use.

\* See our Harsh® Rigid Lift® Hoist 7 year limited warranty for details.

## CAPACITY IN TONS

BOX LENGTH (FEET)	CAB TO TRUNNION (INCHES)	OVER-HANG (INCHES)	DUMP ANGLE			
			MOUNTING LENGTH			
			40° 129"	45° 115"	50° 104"	55° 95"
18	138	36	29.3	26.1	23.6	21.5
	144	30	27.0	24.1	21.8	19.9
	150	24	25.1	22.3	20.2	18.4
20	162	36	25.1	22.3	20.2	18.4
	168	30	23.4	20.9	18.8	17.2
	174	24	21.9	19.5	17.7	16.1
22	186	36	21.9	19.5	17.7	16.1
	192	30	20.7	18.4	16.6	15.2
	198	24	19.5	17.4	15.7	14.3

## DUMP BODY APPLICATIONS

10		6			31.4	28.7
		12			35.4	32.3
12		6			25.7	23.3
		12			28.3	25.8

## NOTE: CAPACITY IN TONS AT 3300PSI (228 bar)

(1) Overhang based on 32" from center line of tail hinge pin to center line of truck axle on single axle trucks, and 44" from center line of tail hinge pin to center line of trunnion on tandem axle trucks, with 2" clearance between cab and box.

(2) These capacities are for the body and payload together with an evenly distributed, nondiminishing, solid load for the full dump cycle. The center of gravity of the load is assumed to be at the center of the body. SPECIFICATIONS ARE SUBJECT TO CHANGE WITHOUT NOTICE.

*7 Year Limited  
Frame Warranty*

**HARSH**  
Tipping Gear



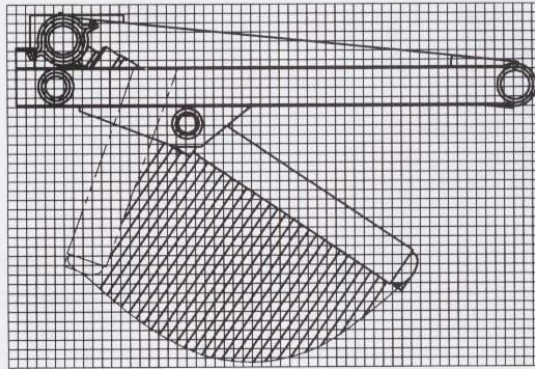
HARSH INTERNATIONAL, INC., 600 Oak Ave., Eaton, CO 80615. TEL 970-454-2291  
1-800-227-1702 FAX 970-454-3491

RL-H80 RIGID LIFT® SPEC SHEET



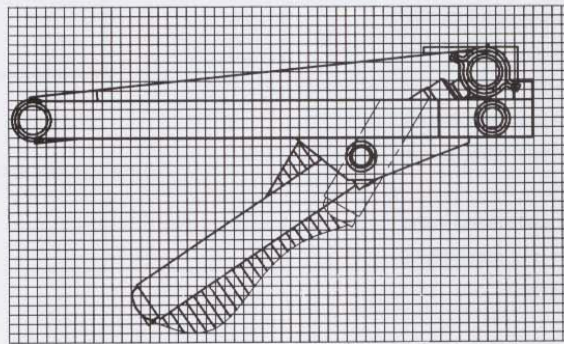
## REVERSE MOUNT

← CAB →

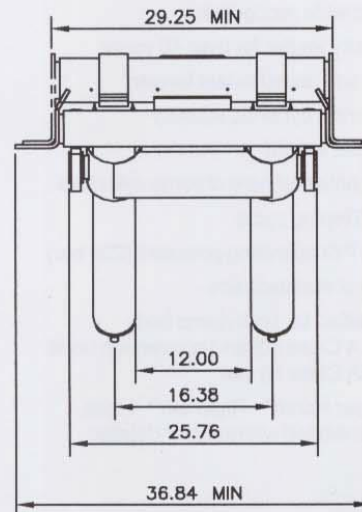
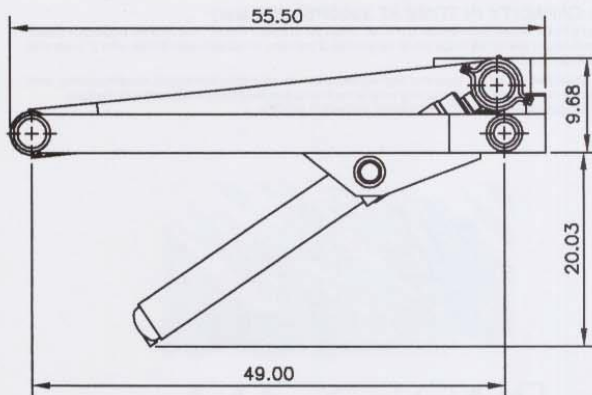


## STANDARD MOUNT

← CAB →



Cylinder Path: 1 square = 1 inch



# RL-J100

SINGLE ACTING

## HARSH HOTLINE

IF YOU CANNOT FIND THE EXACT SPECIFICATIONS THAT MATCH YOUR APPLICATION, JUST CALL **1-800-227-1702** AND WE WILL RUN YOUR SPEC'S THROUGH OUR **EXCLUSIVE H.A.P.** (HARSH APPLICATION PROGRAM) AND FAX YOU A COMPUTER PRINTOUT.

### THE BEST TIPPING GEAR EVER, MADE EVEN BETTER!

To back-up the best warranty in the industry, HARSH® has subjected each Rigid Lift® Main Frame design to a tough 20,000 cycle test (1/3 of this test simulated maximum off center load conditions). The Rigid Lift® performed without main frame failure and very little wear to moving parts.

Many years of customer use and testing in the field is positive proof of excellence and durability of the HARSH® Rigid Lift® Tipping gear.

- 7 year limited warranty\*
- World wide recognition
- Industry leader for over 40 years
- Built and tested to last longer
- Featuring dynamic stability
- Minimal weight
- High polished hard chrome cylinders
- Fast Tipping cycle
- 3100 PSI operating pressure (214 bar)
- Ease of maintenance
- Classified for both dump body (NTEA Class 100) and conversion hoist (NTEA Class J) use.

\* See our Harsh® Rigid Lift® Hoist 7 year limited warranty for details.

### CAPACITY IN TONS

BOX LENGTH (FEET)	CAB TO TRUNNION (INCHES)	OVER-HANG (INCHES)	DUMP ANGLE			
			MOUNTING LENGTH			
			40° 148"	45° 132"	50° 119"	55° 109"
18	138	36	38.3	34.1	30.7	28.0
	150	24	32.8	29.2	26.3	24.0
	156	18	30.7	27.3	24.5	22.4
20	162	36	32.8	29.2	26.3	24.0
	174	24	28.7	25.6	23.0	21.0
	180	18	27.0	24.1	21.6	19.8
22	186	36	28.7	25.6	23.0	21.0
	198	24	25.5	22.7	20.4	18.7
	204	18	24.2	21.5	19.4	17.7
24	210	36	25.5	22.7	20.4	18.7
	222	24	23.0	20.4	18.4	16.8
	228	18	21.9	19.5	17.5	16.0

### DUMP BODY APPLICATIONS

12	6	-	-	33.5	30.6
	12	-	-	36.8	33.7
14	6	-	-	28.3	25.9
	12	-	-	30.7	28.0
16	6	-	-	24.5	22.4
	12	-	-	26.3	24.0

### NOTE: CAPACITY IN TONS AT 3100PSI (214 bar)

(1) Overhang based on 44" from center line of tail hinge pin to center line of trunnion on tandem axle, with 2" clearance between cab and box.

(2) These capacities are for the body and payload together with an evenly distributed, nondiminishing, solid load for the full dump cycle. The center of gravity of the load is assumed to be at the center of the body.

SPECIFICATIONS ARE SUBJECT TO CHANGE WITHOUT NOTICE.

*7 Year Limited  
Frame Warranty*

**HARSH**  
Tipping Gear



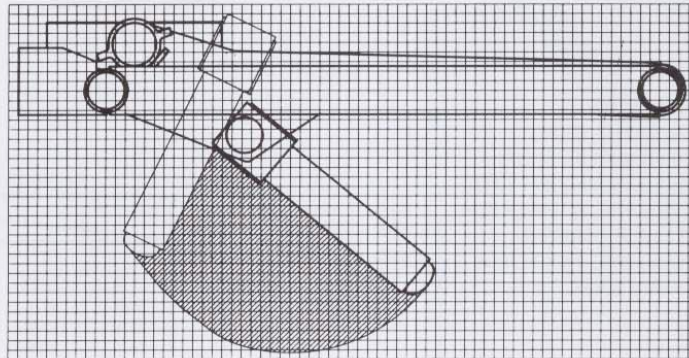
HARSH INTERNATIONAL, INC., 600 Oak Ave., Eaton, CO 80615. TEL 970-454-2291  
1-800-227-1702 FAX 970-454-3491

RL-J100 RIGID LIFT® SPEC SHEET



## REVERSE MOUNT

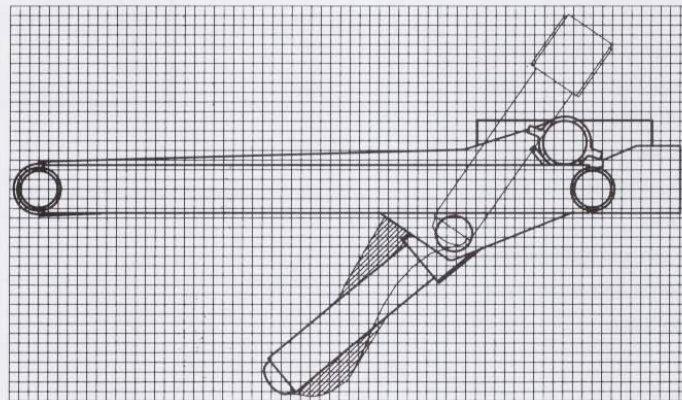
← CAB →



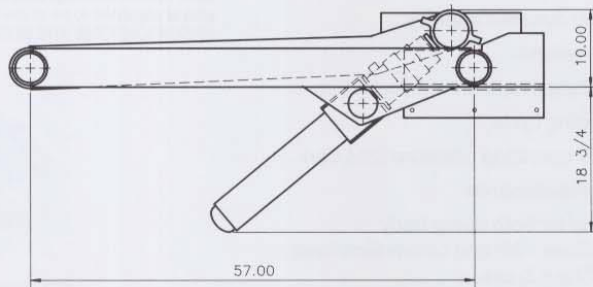
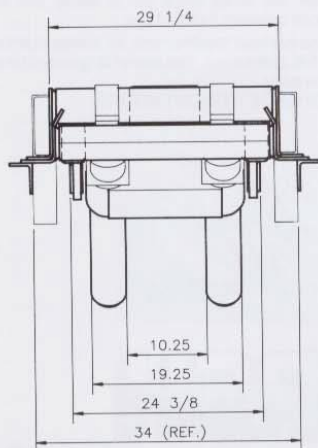
RL-J100

## STANDARD MOUNT

← CAB →



Cylinder Path: 1 square = 1 inch





## HARSH HOTLINE

IF YOU CANNOT FIND THE EXACT SPECIFICATIONS TO MATCH YOUR APPLICATION, CALL 800-227-1702.

WE WILL RUN YOUR SPECS THROUGH OUR EXCLUSIVE H.A.P. (HARSH APPLICATION PROGRAM) AND SEND YOU A COMPUTER PRINTOUT VIA FAX OR EMAIL.

EMAIL: [harsh@harshenviro.com](mailto:harsh@harshenviro.com)  
WEB: [www.harshenviro.com](http://www.harshenviro.com)

### THE BEST TIPPING GEAR EVER, MADE EVEN BETTER!

To back-up the best warranty in the industry, HARSH has subjected each Rigid Lift Main Frame design to a tough 20,000 cycle test (1/3 of this test simulated maximum off center load conditions). The Rigid Lift performed without main frame failure and very little wear to moving parts.

Many years of customer use and testing in the field is proof positive of excellence and durability of the HARSH Rigid Lift Tipping gear.

- 7 year limited warranty
- World wide recognition
- Industry leader for over 40 years.
- Built and tested to last longer.
- Featuring dynamic stability.
- Minimal weight.
- High polished chrome cylinders
- Fast tipping cycle
- 3100 PSI operating pressure (214 bar)
- Ease of maintenance
- Classified for both dump body (NTEA Class 110) and conversion hoist (NTEA Class K) use.

# RL-K110

## SINGLE ACTING

*The First . . .*

*. . . And Still the Best*

BOX LENGTH (FEET)	CAB TO TRUNNION (INCHES)	OVER-HANG * (INCHES)	CAPACITY IN TONS			
			DUMP ANGLE		MOUNTING LENGTH	
			40°	45°	50°	55°
22	186	36	200"	178"	161"	148"
	198	24	36.1	32.7	29.6	27.2
	204	18	30.8	29.1	26.3	24.1
24	210	36	28.7	27.6	24.9	22.9
	222	24	30.8	29.1	26.3	24.1
	228	18	26.8	26.2	23.7	21.7
26	234	36	25.1	24.6	22.5	20.7
	246	24	26.8	26.2	23.7	21.7
			23.6	23.2	21.5	19.7

### DUMP BODY APPLICATIONS

16	-	6	-	-	31.6	29.0
	-	12	-	-	33.8	31.0
18	-	6	-	-	27.8	25.6
	-	12	-	-	29.6	27.2

### NOTE: CAPACITY IN TONS AT 3100 PSI (214 bar)

(1) Overhang based on 44" from center line of tail hinge pin to center line of trunnion on tandem axle trucks, with 2" clearance between cab and box.

(2) These capacities are for the body and payload together with an evenly distributed, nondiminishing, solid load fir the full dump cycle. The center of gravity of the load is assumed to be at the center of the body.

SPECIFICATIONS SUBJECT TO CHANGE WITHOUT NOTICE.

*7 Year Limited  
Frame Warranty*

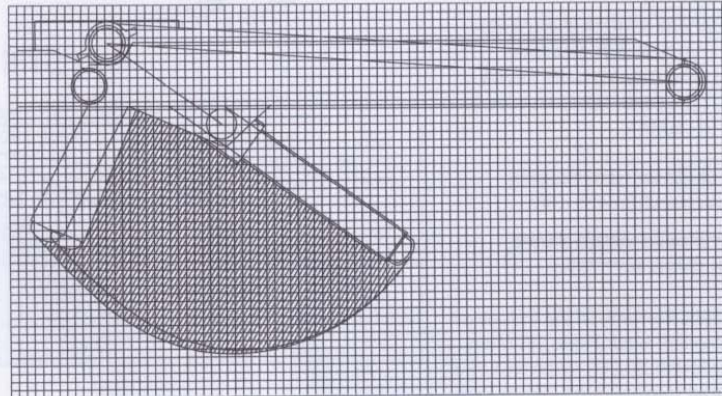
**HARSH**  
Tipping Gear



# RL-K110

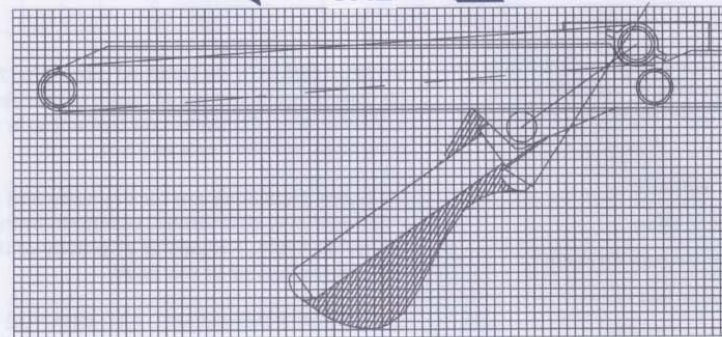
## REVERSE MOUNT

← CAB →

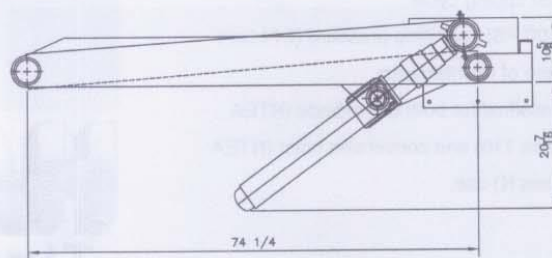
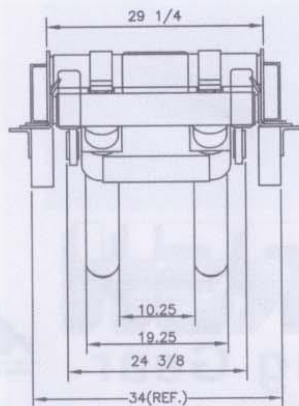


## STANDARD MOUNT

← CAB →



Cylinder Path: 1 square = 1 inch





# RL-M130

SINGLE ACTING

## HARSH HOTLINE

IF YOU CANNOT FIND THE EXACT SPECIFICATIONS THAT MATCH YOUR APPLICATION, JUST CALL **1-800-227-1702** AND WE WILL RUN YOUR SPEC'S THROUGH OUR EXCLUSIVE **H.A.P.** (HARSH APPLICATION PROGRAM) AND FAX YOU A COMPUTER PRINTOUT.

### THE BEST TIPPING GEAR EVER, MADE EVEN BETTER!

To back-up the best warranty in the industry, HARSH® has subjected each Rigid Lift® Main Frame design to a tough 20,000 cycle test (1/3 of this test simulated maximum off center load conditions). The Rigid Lift® performed without main frame failure and very little wear to moving parts.

Many years of customer use and testing in the field is positive proof of excellence and durability of the HARSH® Rigid Lift® Tipping gear.

- 7 year limited warranty\*
- World wide recognition
- Industry leader for over 40 years
- Built and tested to last longer
- Featuring dynamic stability
- Minimal weight
- High polished hard chrome cylinders
- Fast Tipping cycle
- 3100 PSI operating pressure (228 bar)
- Ease of maintenance
- Classified for both dump body (NTEA Class 120) and conversion hoist (NTEA Class L) use.

\*See our Harsh® Rigid Lift® Hoist 7 year limited warranty for details.

### CAPACITY IN TONS

BOX LENGTH (FEET)	OVER-HANG (INCHES)	DUMP ANGLE			
		MOUNTING LENGTH			
		40° 231"	45° 207"	50° 187"	55° 171"
26	36	44.6	42.3	40.9	38.3
	24	39.8	37.6	36.2	34.8
	18	37.8	35.7	34.3	33.3
28	36	39.8	37.6	36.2	34.8
	24	36.0	33.9	32.5	31.8
	18	34.3	32.3	30.9	30.2

### DUMP BODY APPLICATIONS

17	6	-	-	52.4	47.9
	12	-	-	55.9	51.1
18	6	-	-	49.3	45.1
47.9		12	-	-	52.4

### NOTE: CAPACITY IN TONS AT 3100PSI (214 bar)

(1) Overhang based on 44" from center line of tail hinge pin to center line of trunnion on tandem axle trucks, with 2" clearance between cab and box.

(2) These capacities are for the body and payload together with an evenly distributed, nondiminishing, solid load for the full dump cycle. The center of gravity of the load is assumed to be at the center of the body.

SPECIFICATIONS ARE SUBJECT TO CHANGE WITHOUT NOTICE.

*7 Year Limited  
Frame Warranty*

**HARSH®**  
Trailer Tipping Gear



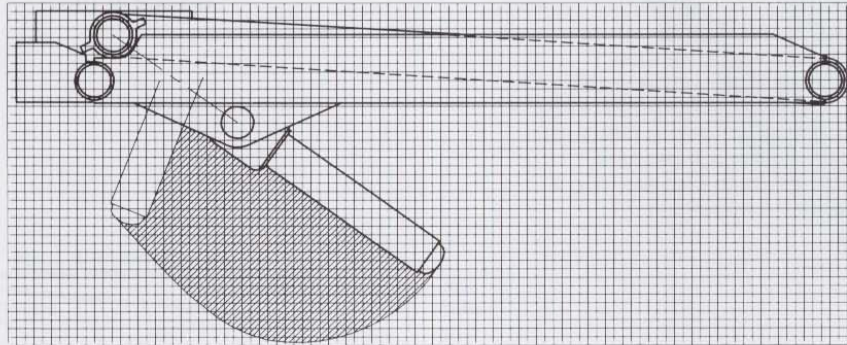
HARSH INTERNATIONAL, INC., 600 Oak Ave., Eaton, CO 80615. TEL 970-454-2291  
1-800-227-1702 FAX 970-454-3491

RL-M130 RIGID LIFT® SPEC SHEET



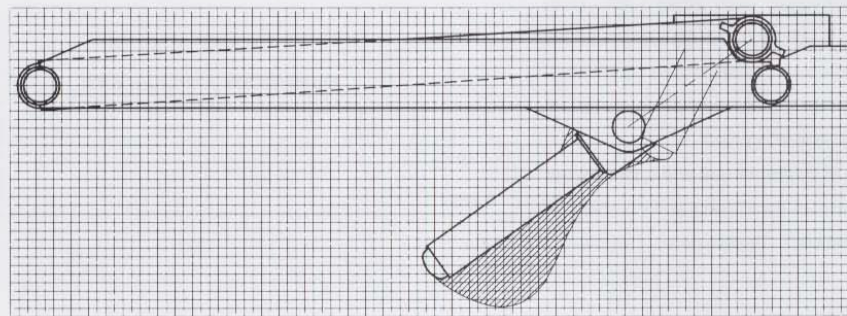
REVERSE MOUNT

← CAB →



STANDARD MOUNT

← CAB →



Cylinder Path: 1 square = 1 inch

