



## THE ULTIMATE CHOICE FOR SUPERIOR PERFORMANCE

The Henke Talon is engineered to clear leaves, brush, debris, landscape materials by hydraulically opening and closing the bucket claw to collect and compact material. The operator can easily maneuver to open and dump in the desired location. The Henke Talon works with most makes and models of Loaders.

**BOLT-ON JAWS** + reinforced front edge for built-in strength and durability

**HEAVY-DUTY** construction, 3/16" double-paneled side walls, strong and durable bottom plates

**MECHANICAL FLOAT** (option) follow contours of the road, easy to access lockout for fixed position

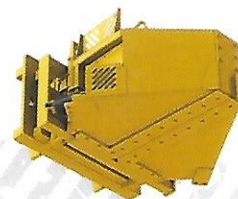
**CONTINUOUS** bottom tube protects cylinders from front impact

**BOLT-ON REVERSIBLE CUTTING EDGES** designed to be switched for longer use

**ENGINEERED** to handle stress at the cylinder connection points, choose either 3x10 or 4x10 reversing cylinders

**BOLT-ON** wear parts: teeth plates, nose wear guard, corner wear guards

**OPTIONS** include swivel plate, mechanical float, bolt-on basket shields, sight levelling gauge



Contact [Sales@Henkemfg.com](mailto:Sales@Henkemfg.com) for available sizes and more information

FOR PRODUCT VIDEOS VISIT OUR YOUTUBE CHANNEL

888.682.9010  
[henkemfg.com](http://henkemfg.com)

**HENKE**®

AN ALAMO GROUP COMPANY

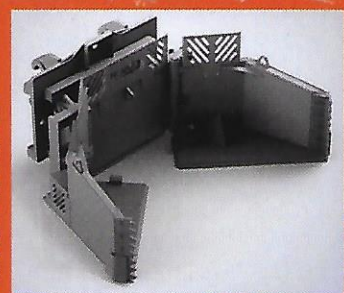
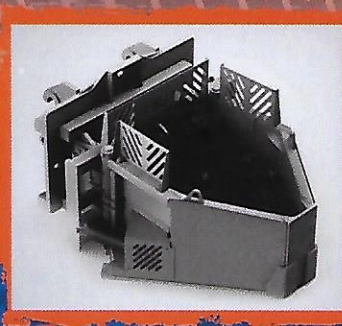




# HENKE LOADER ATTACHMENTS TAKE YOUR LOADER TO ANOTHER LEVEL



Henke's Talon is perfect for moving/removing leaves, debris, trash and landscape materials



**ANOTHER GREAT PRODUCT FROM THE LEADER IN HIGH PERFORMANCE  
ATTACHMENTS FOR LOADERS, GRADERS AND TRUCKS**

888.682.9010  
henkemfg.com

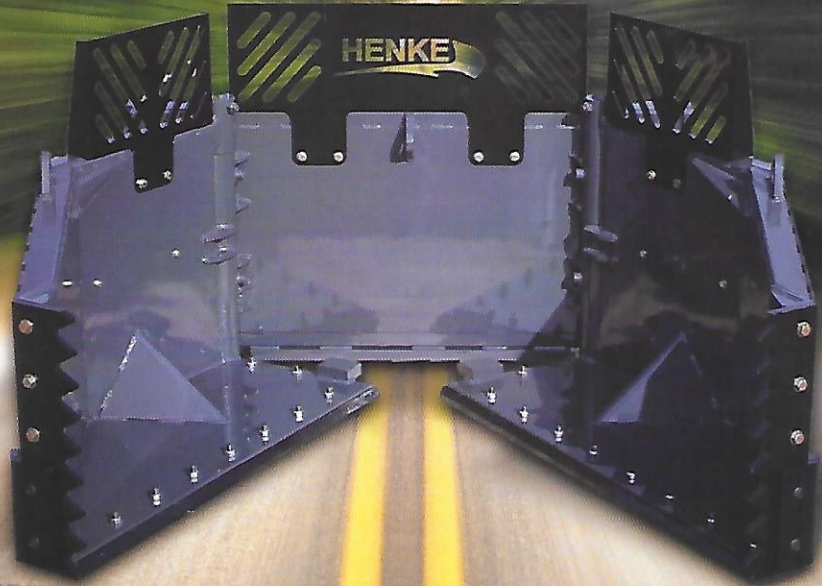
**HENKE**®

AN ALAMO GROUP COMPANY



# GRAB > COLLECT > MOVE

THE LOADER ATTACHMENT THAT ALLOWS YOU TO GET MORE



## HENKE TALON 500 & 800 SERIES

*Perfect for moving/removing:*

> TRASH > DEBRIS > BRUSH > LEAVES

> LANDSCAPE & CONSTRUCTION MATERIALS

*and for cleaning up after severe storms*

Sourcewell   
Formerly NJPA

Awarded Contract

Contract # 080818-HEN

**HENKE** 

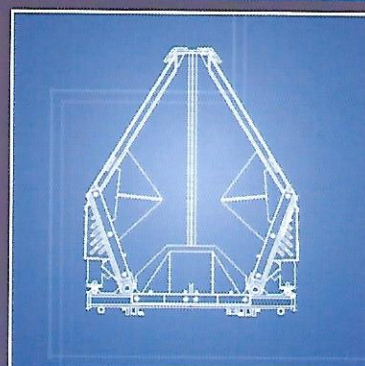
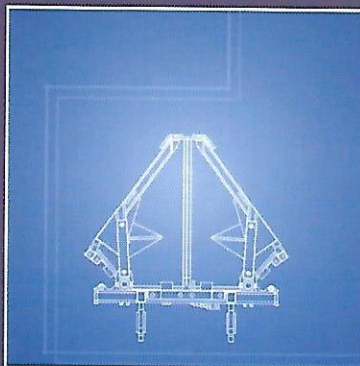


# THE SIZE YOU NEED TO GET THE JOB DONE

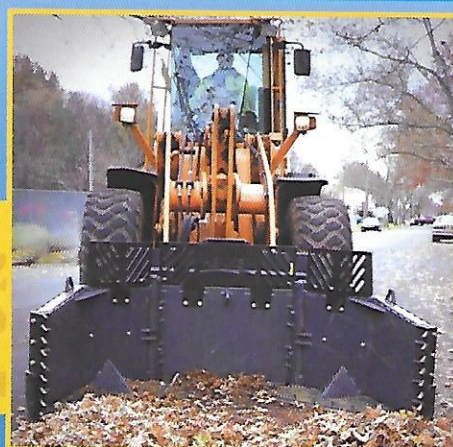
**HENKE**

**TALON 500 SERIES**

**TALON 800 SERIES**



Length		
From backplate	52.80"	80.40"
Height		
Front Nose	25.38"	25.38"
Back Plate	29.50"	29.50"
Overall (with shields)	41.38"	45.38"
Width		
Fully Closed	68.50"	68.50"
Fully Open	94.00"	118.00"
Cylinders		
10" Stroke	10" Stroke	10" Stroke
3" Bore	Standard	NA
4" Bore	Optional	Standard
Capacity (heaped)		
	1.2 Cubic Yards	2.2 Cubic Yards



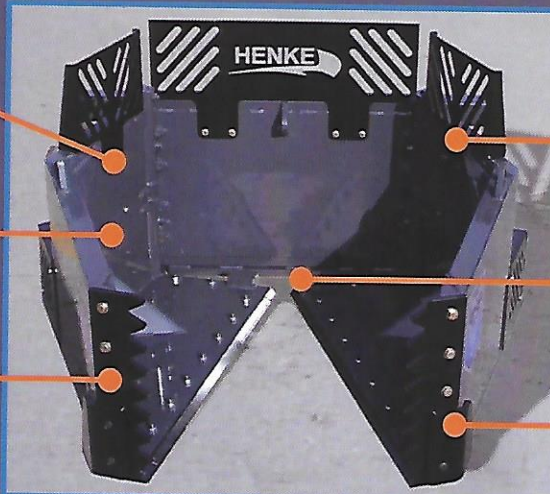


# RUGGEDLY BUILT > EASY TO MAINTAIN

DOUBLE paneled  
SIDE WALLS

BOX-REINFORCED  
PANEL  
CONSTRUCTION

BOLT-ON TEETH +  
REINFORCED  
FRONT EDGE



BOLT-ON BASKET  
SHIELDS  
(OPTIONAL)

BOLT-ON  
REVERSIBLE  
CUTTING EDGES

BOLT-ON  
WEAR GUARDS

BOLT-ON  
CYLINDER  
GUARDS

CONTINUOUS  
BOTTOM TUBE  
FOR PROTECTION



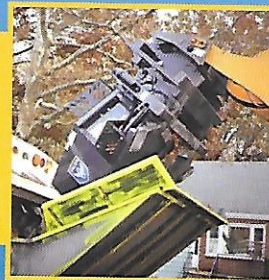
GREASE-ABLE,  
GUSSET & TUBE  
REINFORCED  
HINGE LINES

BUSHINGS IN THE  
CYLINDER EARS



DESIGNED TO OUTPERFORM and OUTLAST OTHER PRODUCTS, THE TALON'S WEAR PARTS ARE ALL BOLT-ON!

A GREAT ALTERNATIVE TO USING A GRAPPLE BUCKET, The Henke Talon is engineered to clear brush, debris, leaves, trash and landscape materials by hydraulically opening and closing the bucket claw to collect and compact material. The operator can easily maneuver to open and dump in the desired location. The Henke Talon works with most makes and models of Loaders.







## HIGH PERFORMANCE ATTACHMENTS FOR LOADERS/GRADERS



**PLOW+WING COMBOS**



**V-PLOWS**



**REVERSIBLE END LOADER**



**BACKHOE LOADER PLOWS**



**ROAD WARRIOR SERIES**



**DOZER BLADES**



**TALON BUCKET CLAW**



**GRADER WINGS**



**AIRPORT ATTACHMENTS**



**SNOW BASKETS/RAMP BUCKETS**



**HI-GATE / SNOW GATE**



**COUPLER ADAPTERS /  
LIFT GROUPS**

CATCH OUR VIDEOS ON **You Tube**

**Sourcewell**   
Formerly NJPA

**Awarded Contract**

Contract # 080818-HEN

**HENKE**   
AN ALAMO GROUP COMPANY