



VAN CRANES

Transit VC1000



MAX. CAPACITY
1,000 LBS

CRANE RATING
6,000 FT-LBS

MAX. REACH
6 FT

APPLICATIONS
FORD TRANSIT

CONTROLS
ELECTRIC

FEATURES

■ COMPACT STORAGE

The VC1000 allows van owners the cargo space while including a lifting application in their work van. The crane utilizes very little space allowing owners to include shelving units and other van accessories.

■ ROTATION LOAD CONTROLS

To safely operate and swing loads in/out of the van, the VC1000 includes (2) rotation control levers that keep the load from swinging out of control, damaging the van and/or causing injury.

AN INDUSTRY FIRST...

The VC1000 utilizes a unique dual floor and ceiling mounted telescopic mast that integrates with the van structure itself to ensure maximum structural integrity. The telescopic mast will allow it to fit within the Transit Mid & High Roof 148" WB models. The crane also features two unique rotation control features for the primary and secondary booms which utilize two hand levers that operate multi-positional locks. This key feature adds an additional safeguard for the operators as the load is being loaded and unloaded. The Venturo VC1000 allows safe and productive material handling without the need for a forklift or a heavy, expensive liftgate.

SPECIFICATIONS

Lifting Capacities:	1,000 lbs
Crane Rating:	6,000 ft-lbs
Mounting Space:	10" x 10" Floor-mount
Stowed Height:	Telescopic (Mid/High Roof)
Rope Diameter:	3/16" @ 25'
Line pull speed:	14 ft/min
Max. Single-line:	1,000 lbs
Boom Extension:	Up to 6'
Rotation:	Manual/Multiple Rotation Stops
Power Supply:	Electric 12V DC
Requirements:	12v DC Battery
Circuit Breaker:	150 AMP Recommended
Boom Articulation:	Folds back into main boom
Controls:	12V DC On/Off Winch

OPTIONS & ACCESSORIES

Suspension Support

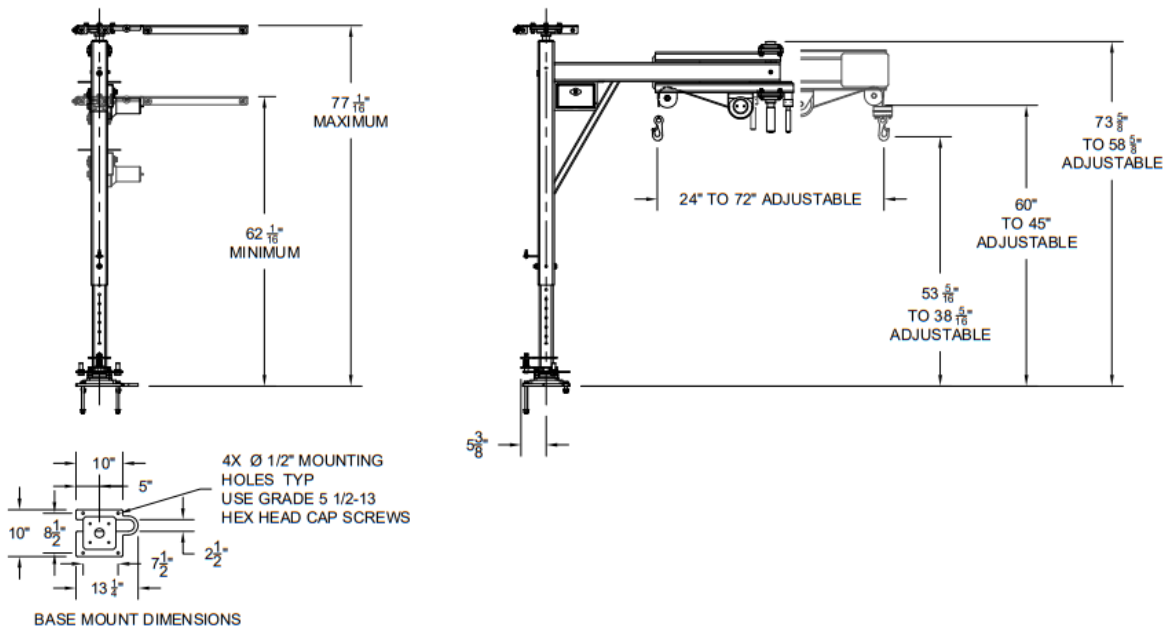
The VC1000 includes a jackleg for the rear of the van to support the suspension if loads exceed 750 lbs. Class 3 receiver hitch must be purchased separately.

Master Disconnect Switch

Crane includes a master disconnect switch kit which allows the user to disconnect the power to the crane during transit and when not in use.



FORD TRANSIT VC1000 DIMENSIONS



Venco Venturo Industries LLC
 12110 Best Place | Cincinnati, Ohio 45241
 800-226-2238 | 513-772-8448 Local
info@venturo.com | www.venturo.com

NOTE: All Venturo service cranes meet ANSI B30.5 and OSHA 1910.180 specifications. Specifications subject to change without notice. Copyright © 2019 Venco Venturo Industries LLC. All Rights Reserved.



VAN CRANES

Sprinter VC1000



MAX. CAPACITY
1,000 LBS

CRANE RATING
6,000 FT-LBS

MAX. REACH
5 FT 6 IN

APPLICATIONS
SPRINTER

CONTROLS
ELECTRIC

FEATURES

■ COMPACT STORAGE

The VC1000 allows van owners the cargo space while including a lifting application in their work van. The crane utilizes very little space allowing owners to include shelving units and other van accessories.

■ ROTATION LOAD CONTROLS

To safely operate and swing loads in/out of the van, the VC1000 includes (2) rotation control levers that keep the load from swinging out of control, damaging the van and/or causing injury.

AN INDUSTRY FIRST...

The VC1000 utilizes a unique dual floor and ceiling mounted telescopic mast that integrates with the van structure itself to ensure maximum structural integrity. The telescopic mast will allow it to fit within the Sprinter Standard/High Roof 148" WB models. The crane also features two unique rotation control features for the primary and secondary booms which utilize two hand levers that operate multi-positional locks. This key feature adds an additional safeguard for the operators as the load is being loaded and unloaded. The Venturo VC1000 allows safe and productive material handling without the need for a forklift or a heavy, expensive liftgate.

SPECIFICATIONS

Lifting Capacities:	1,000 lbs
Crane Rating:	5,750 ft-lbs
Mounting Space:	10" x 10" Floor-mount
Stowed Height:	Telescopic (Standard/High Roof)
Rope Diameter:	3/16" @ 25'
Line pull speed:	14 ft/min
Max. Single-line:	1,000 lbs
Boom Extension:	Up to 5'6"
Rotation:	Manual/Multiple Rotation Stops
Power Supply:	Electric 12V DC
Requirements:	12v DC Battery
Circuit Breaker:	150 AMP Recommended
Boom Articulation:	Folds back into main boom
Controls:	12V DC On/Off Winch

OPTIONS & ACCESSORIES

Suspension Support

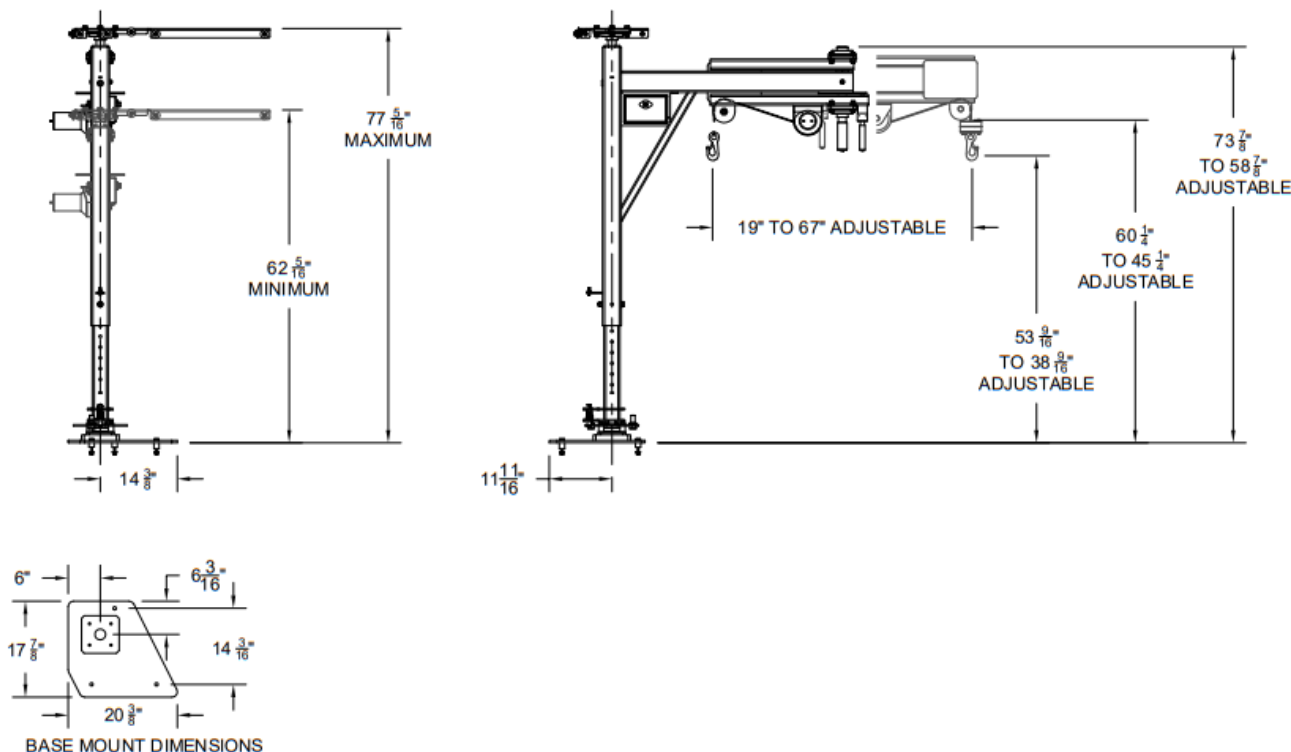
The VC1000 includes a jackleg for the rear of the van to support the suspension if loads exceed 750 lbs. Class 3 receiver hitch must be purchased separately.

Master Disconnect Switch

Crane includes a master disconnect switch kit which allows the user to disconnect the power to the crane during transit and when not in use.



MERCEDES SPRINTER VC1000 DIMENSIONS



Venco Venturo Industries LLC
 12110 Best Place | Cincinnati, Ohio 45241
 800-226-2238 | 513-772-8448 Local
info@venturo.com | www.venturo.com

NOTE: All Venturo service cranes meet ANSI B30.5 and OSHA 1910.180 specifications. Specifications subject to change without notice. Copyright © 2019 Venco Venturo Industries LLC. All Rights Reserved.

VAN CRANES VC750FB



MAX. CAPACITY
750 LBS

CRANE RATING
1,875 FT-LBS

MAX. REACH
2 FT 6 IN

APPLICATIONS
MULTIPLE

CONTROLS
ELECTRIC

FEATURES

■ COMPACT STORAGE

The Venturo VC750FB utilizes very little space in the side-door of the Ford Transit. This crane can also be installed in the rear or side doors of Sprinter vans also. With a 63-3/8" height, the crane must be used in taller van applications.

PERFECT FOR THE SIDE-CARGO DOOR.

The VC750FB van crane includes a 2 ft, 6 in fixed, boom-length with a maximum capacity of 750 lbs for the Euro-style work van side-door. The VC750FB is perfect for Ford Transit side-door applications because of the higher roof height. The boom folds down to allow for more cargo space when the crane is not in use. Fold-down boom offers a secure storage position and easy access.

SPECIFICATIONS

Lifting Capacities:	750 lbs
Crane Rating:	1,875 ft-lbs
Mounting Space:	12" x 12"
Stowed Height:	63-3/8"
Rope Diameter:	3/16" @ 25'
Line pull speed:	14 ft/min
Max. Single-line:	750 lbs
Boom Extension:	Up to 2',6
Rotation:	Manual with Band Brake
Power Supply:	Electric 12V DC
Requirements:	12v DC Battery
Circuit Breaker:	150 AMP Recommended
Boom Elevation:	1-position, fixed
Controls:	12V DC On/Off Winch

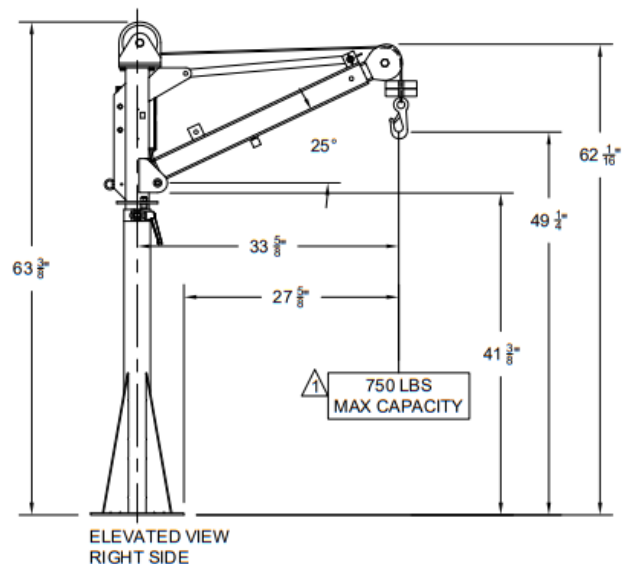
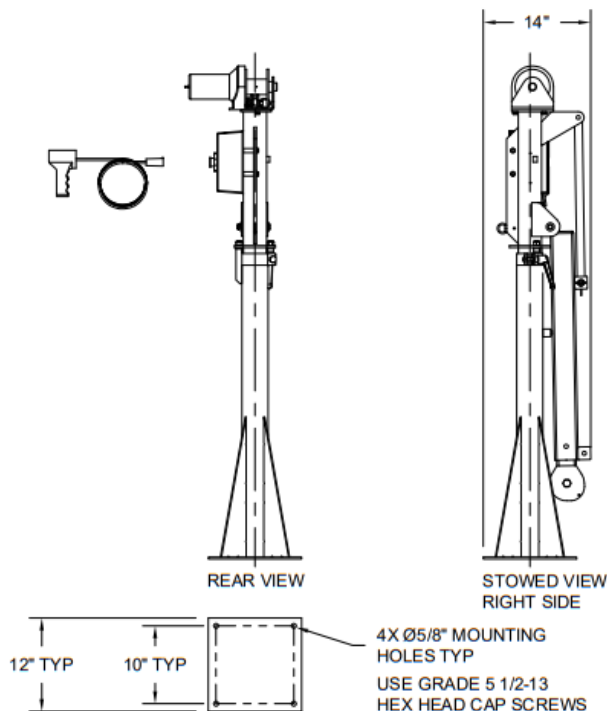
OPTIONS & ACCESSORIES

Master Disconnect Switch

Crane includes a master disconnect switch kit which allows the user to disconnect the power to the crane during transit and when not in use.



VC750FB DIMENSIONS



Venco Venturo Industries LLC
 12110 Best Place | Cincinnati, Ohio 45241
 800-226-2238 | 513-772-8448 Local
info@venturo.com | www.venturo.com

NOTE: All Venturo service cranes meet ANSI B30.5 and OSHA 1910.180 specifications. Specifications subject to change without notice. Copyright © 2019 Venco Venturo Industries LLC. All Rights Reserved.

VAN CRANES ESV1000



MAX. CAPACITY
1,000 LBS

CRANE RATING
3,000 FT-LBS

MAX. REACH
3 FT

APPLICATIONS
MULTIPLE

CONTROLS
ELECTRIC

FEATURES

■ COMPACT STORAGE

The ESV1000 allows owners the cargo space while including a lifting application in their enclosed body or work van. The crane utilizes very little space allowing owners to include shelving units and other van accessories.

■ UNIVERSAL PLACEMENT

The ESV1000 can be installed and/or placed in many different types of applications including enclosed service vans, cargo vans, flatbeds, pickup beds and many more.

A NEW KIND OF LIFTING SOLUTION.

The ESV1000 now offers you a lifting solution for the jobsite with your enclosed service body. With an extremely small footprint, the crane can stow nicely against the inside wall on either the curb-side or street-side of the service body when not in use. With the telescopic boom, the ESV1000 can fit in any of the enclosed service bodies without the need for any add-ons or specialty mounting kits. The 12V DC winch wires directly to the battery and includes a 12 ft pendant controller with up/down functions. The winch is situated in a fixed housing to the side of the crane. This will allow the boom to swing with zero winch interference, giving the crane a wide swing radius.

SPECIFICATIONS

Lifting Capacities:	1,000 lbs
Crane Rating:	3,000 ft-lbs
Mounting Space:	10" x 10" Floor-mount
Stowed Height:	37-5/8"
Rope Diameter:	3/16" @ 25'
Line pull speed:	14 ft/min
Max. Single-line:	1,000 lbs
Boom Extension:	Up to 3'
Rotation:	Manual with Band Brake
Power Supply:	Electric 12V DC
Requirements:	12v DC Battery
Circuit Breaker:	150 AMP Recommended
Boom Elevation:	5-pin Boom Elevation
Controls:	12V DC On/Off Winch

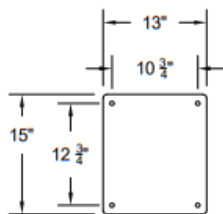
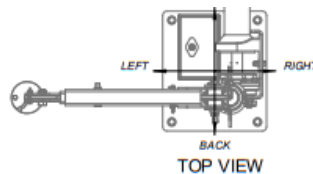
OPTIONS & ACCESSORIES

Master Disconnect Switch

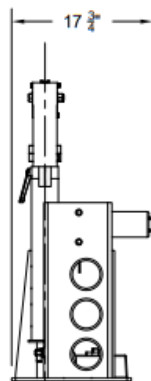
Crane includes a master disconnect switch kit which allows the user to disconnect the power to the crane during transit and when not in use.



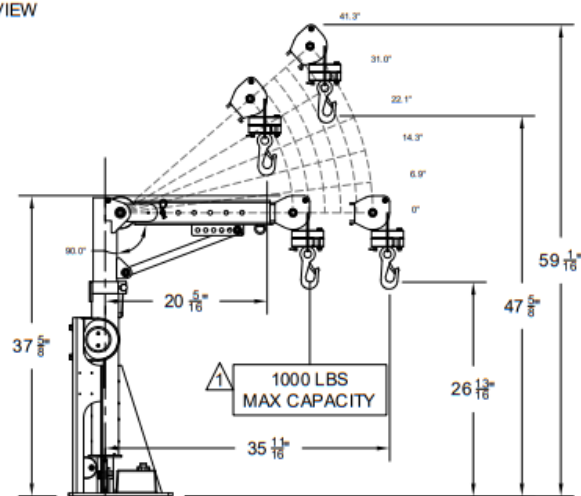
ESV1000 DIMENSIONS



BOTTOM



RIGHT



FRONT



Venco Venturo Industries LLC
 12110 Best Place | Cincinnati, Ohio 45241
 800-226-2238 | 513-772-8448 Local
info@venturo.com | www.venturo.com

NOTE: All Venturo service cranes meet ANSI B30.5 and OSHA 1910.180 specifications. Specifications subject to change without notice. Copyright © 2019 Venco Venturo Industries LLC. All Rights Reserved.

FREIGHT NOT
INCLUDED IN
PRICE OF UNIT.
FREIGHT WILL
BE BILLED UPON
PURCHASE.